

# 2023 Asbestos Reinspections

**September 2023**



For:

San Diego County Regional Airport Authority

Environmental Affairs

P.O. Box 82776 San Diego, CA 92138

By:



TETRA TECH, INC.

1230 Columbia Street, Suite 1000

San Diego, California 92101

And:



Millennium Consulting Associates

4683 Chabot Drive, Ste. 380,

Pleasanton, California

# 2023 Asbestos Reinspections

## Table of Contents

<u>Section</u>	<u>Page</u>
Abatement Activities.....	3
Asbestos Management.....	5
Summary of Asbestos- Containing Materials by address.....	6
1. Terminal 1: 3665 N. Harbor Drive.....	9
2. Terminal 2 East: 3707 N. Harbor Drive.....	17
3. Terminal 2 West: 3835 N. Harbor Drive.....	21
4. Administration Building: 3225 N. Harbor Drive.....	22
5. 2722 and 2724 Truxtun Road.....	25
6. Airline Rescue and Recovery Facility: 3698 Pacific Highway.....	30

# 2023 Asbestos Reinspections

## 2023 Abatement Activities

Pending

## 2022 Abatement Activities

Terminal 1 East - Gates 1, 1A & 2  
Terminal 2 East – Room 1118

Demolished Winter of 2022  
Abated Spring of 2022

## 2021 Abatement Activities

2357 Airline Road:  
2359, 2361, and 2363 Airline Road  
2375 Airline Road  
2330 Stillwater Road  
2340 Stillwater Road (A-D)  
2412 Winship Lane  
2415 Winship Lane  
2417 Winship Lane  
Terminal 2 East – Old FIS Area

Demolished Fall of 2021  
Demolished Fall of 2021\*\*  
Demolished Fall of 2021\*\*  
Demolished Fall of 2021\*\*  
Demolished November 2021\*  
Demolished Fall of 2021  
Demolished Fall of 2021  
Demolished Fall of 2021  
Abated Fall of 2021

## 2020 Abatement Activities

**Terminal 1** - Minimal abatement activities

**2417 Winship** - The Facility Services has vacated the building

**2415 Winship** - The Facility Services building has been vacated. Plumbing and Electrical departments have vacated the building.

**Terminal 2** - On September 10, 2020 asbestos abatement activities were conducted in the electrical room (B121), located in the former FIS space near the southeast corner of the first floor in Terminal 2 East. There was approximately one square foot of asbestos-containing mastic below the center of the bolted down transformer in the room, that was inaccessible and could not be removed.

## 2019 Abatement Activities

**Terminal 1** – Vinyl baseboard mastic T1 West, found in Jet Blue hallway, removed July 2019. Floor tile and mastic found in T1E Men’s restroom entry was removed September 2019. Cove base mastic found in rooms 1194, 1195, 1196, and 1198 was removed in February 2019.

**Terminal 2 East** – Asbestos containing floor tile mastic was removed from an elevator room in T2 East in September 2019. Asbestos containing floor mastic was removed from rooms 1142 and 1143.

## Historical Abatement and Demolition

2445 Winship Lane –

Demolished 2009.

2450 Winship Lane –

Demolished and abated 2009.

2340 Stillwater Road Annex –

Demolished 2014.

2980 Pacific Highway –

Demolished 2016.

2340 Stillwater Road -

Rooms 17, 18, and 19 Abated in 2016 and rooms Abated in 2016

# 2023 Asbestos Reinspections

## Asbestos Management:

### ASBESTOS NOTIFICATION TO EMPLOYEES, PUBLIC, AND AGENCIES:

San Diego County Regional Airport Authority (SDCRAA) is required to give notice to employees, tenants, and contractors working at any SDCRAA-owned facility that has asbestos-containing construction materials, pursuant to the Asbestos Notification Law (California Health & Safety Code 25915 et seq., and in particular 25915.1). Below is a summary list of locations and materials found in this report.

Be aware that this list only includes material tested and found to contain asbestos material. Materials not tested may contain asbestos. Asbestos inspection and testing is required prior to performing demolition, renovation, retrofit or remodeling in any facility constructed prior to 1981 APCD Rule 1206, effective 11/15/17 requires facility survey prior to renovation or demolition “regardless of the age of the facility.” **Special training is required for any disturbance of materials suspected of containing asbestos.** Moving, drilling, boring, sanding or otherwise disturbing any asbestos-containing materials (ACM) or presumed asbestos-containing material (PACM) may present a health risk and, consequently, shall not be attempted by anyone who is not qualified, equipped to handle asbestos, or does not have a valid training, certification, and/or license. If you have any questions or concerns, please contact the SDCRAA Environmental Affairs Department at 619-400-2782. Tenants are advised to share this information with their employees.

### ASBESTOS MANAGEMENT PROGRAM:

An Asbestos Operations and Maintenance Program is in effect to ensure proper notifications and to periodically inspect and document the condition of the asbestos containing material and to make repairs, if necessary. Abatement and sampling reports are kept on file. Should you become aware that asbestos materials have been disturbed or if you have questions, please contact the SDCRAA Environmental Affairs Department at 619-400-2782.

Damaged materials are listed as “Damaged” and in Bold in the following ACM location and quantity tables.

### POTENTIAL HEALTH RISKS OF ASBESTOS EXPOSURE:

Asbestos becomes a health hazard when fibers are released into the air where they may be inhaled or ingested. Asbestos does not present a hazard if it is not disturbed, if it is properly covered, or if the fibers are bound, as in floor tiles or “transite” boards. Certain risk factors are relevant to the development of asbestos-related diseases, such as: the number, concentration and size of the asbestos fibers inhaled or ingested; the duration of the exposure and the length of time since exposure and susceptibility to disease development. If not properly controlled, asbestos may cause scarring of lung tissue (called asbestosis), cancer of the chest cavity lining (called mesothelioma), or lung cancer. Exposure to airborne asbestos fibers should be minimized to the lowest feasible levels.

# SUMMARY OF ASBESTOS-CONTAINING MATERIALS:

---

## 3665 North Harbor Drive: Terminal 1 — Note: Address updated from previous reports

Exterior stucco roof and scattered around exterior walls  
12 x 12 beige with mottled brown floor tile and associated mastic  
Drywall joint compound  
12 x 12 beige speckled floor tile and associated mastic  
12 x 12 beige with dark brown floor tile and associated mastic  
12 x 12 white mottled brown floor tile and associated mastic  
3” pipe insulation elbows  
12 x 12 beige speckled floor tile and associated mastic (east screening area)  
Black floor mastic residual  
Fire Doors  
Mirror Mastic

## 3707 North Harbor Drive: Terminal 2 East

12 x 12 mustard speckled floor tile and associated mastic  
Black mastic  
12 x 12 white with black swirl floor tile with black mastic  
12 x 12 tan floor tile and associated mastic  
Brake system pad  
Fire doors  
Upper and lower transite window panels  
Cove base mastic  
Fireproofing

## 3835 North Harbor Drive: Terminal 2 West

No known asbestos-containing materials at any location.

## 3225 North Harbor Drive: Administration Building

Stucco On all 4 exterior walls  
HVAC duct seam mastic on ducting throughout the 2nd floor  
Transite pipes (1st, 2nd, and 3rd floors)  
Fireproofing material - 3rd floor at atrium  
Drywall in elevator shafts  
Cove base mastic in staircases

## SUMMARY OF ASBESTOS-CONTAINING MATERIALS:

### 2357 Airline Road - **DEMOLISHED**

12 x 12 white/brown flake floor tile and associated mastic (rm 1 & 22) 2000 ft<sup>2</sup>  
12 x 12 floor tile and associated mastic (rm 10-12) 1200 ft<sup>2</sup>  
12 x 12 floor tile and associated mastic (rm 20-21) 500 ft<sup>2</sup>  
Exterior caulk around west door/windows 100 ft  
Roof penetration mastic 200 ft<sup>2</sup>  
Sheet vinyl and mastic (rm 14) 50 ft<sup>2</sup>

### 2359, 2361, and 2363 Airline Road **DEMOLISHED**

12 x 12 floor tile and associated mastic 4000 ft<sup>2</sup>  
Drywall and joint compound (some of the walls ie. Rm 19-39) 13000 ft<sup>2</sup>  
Carpet mastic 2100 ft<sup>2</sup>  
Mastic on seams and around penetrations around the entire roof of all three sections 500 ft<sup>2</sup>  
2'x4' acoustic ceiling panels 2100 ft<sup>2</sup>  
Caulk around doors/windows on west wall 200 ft  
Cove base mastic (not confirmed)

### 2375 Airline Road **DEMOLISHED**

Drywall and joint compound (walls and ceilings) 17000 ft<sup>2</sup>  
Mastic behind gray 4" vinyl baseboard along bottom of all walls 650 ft<sup>2</sup>  
Mastic behind vinyl 6" baseboard along bottom of all walls 2000 ft<sup>2</sup>  
9 x 9 beige floor tile and mastic 2000 ft<sup>2</sup>  
Sheet vinyl and associated mastic 800 ft<sup>2</sup>  
Roof penetration mastic 50 ft<sup>2</sup>  
Duct wrap 20 ft<sup>2</sup>  
Exterior west wall window caulk 100 ft  
Exterior stucco 4500 ft<sup>2</sup>

### 3698 Pacific Highway: Aircraft Rescue & Firefighting Facility

Drywall and joint compound  
Thermal System Insulation (TSI) elbows  
Roof

### 2330 Stillwater Road **DEMOLISHED**

Mastic under 12 x 12 gray floor (not confirmed)  
12x12 yellow/blue floor tile and associated mastic (possibly removed)  
Drywall and joint compound throughout Room 7 2500 ft<sup>2</sup>  
Window putty throughout Rooms 6 and 8 200 ft  
Roof field assembly and associated components 11500ft<sup>2</sup>

# SUMMARY OF ASBESTOS-CONTAINING MATERIALS:

Roof penetration mastic 200ft<sup>2</sup>

## 2340 Stillwater Road (A-D) **DEMOLISHED**

Vinyl flooring, rooms 3-8 & 13 1,600 ft<sup>2</sup>

Drywall and joint compound on ceilings in Rooms 1-9 2000 ft<sup>2</sup>

Mastic behind wood paneling on some of the walls 900 ft<sup>2</sup>

Spray applied acoustical material(ceiling) 1200 ft<sup>2</sup>

Spray applied acoustical material overspray on floor under the carpet, on top of floor tile

Roof penetration mastic on roof 385 ft<sup>2</sup>

Carpet floor (not confirmed)

Mastic associated with 12 x 12 gray floor tile under carpet and vinyl sheet flooring

Mastic associated with 12 x 12 gray floor tile 900 ft<sup>2</sup>

9"x9" vinyl floor tile and mastic (room 6) 120 ft<sup>2</sup>

Roof assembly on roof (under rubberized membrane) 10000 ft<sup>2</sup>

Stucco all four walls of main building (not confirmed)

Window putty along north wall of main building (not confirmed)

## 2722 and 2724 Truxtun Road

Black/gray roof mastic

Roll shingle

Crawl spaces contain broken transite pipes and Thermal System Insulation (TSI)

## 2412 Winship Lane **DEMOLISHED**

Exterior black/gray roof mastic (under rubberized membrane)

## 2415 Winship Lane **DEMOLISHED**

Roof penetration mastic various locations (under rubberized membrane)

## 2417 Winship Lane **DEMOLISHED**

Vinyl floor tile and associated mastic under carpet and a layer of non-asbestos floor tile

12 x 12 green vinyl floor tile and associated mastic under carpet

Exterior Stucco All 4 walls of the building

Window caulk (white)

Gray sealant in coolers

Interior plaster

# San Diego International Airport Map





# San Diego International Airport Map



**3665 North Harbor Drive: Terminal 1**  
**Locations and Quantities of Asbestos Containing Materials**

Material Description	Material Location	Approximate Quantity	Friable Y/N	Condition	Comments
12 x 12 Beige with mottled brown Floor Tile and Associated Mastic	1st floor east, near door 1016M	100 SF	N	G	Added to inventory 03.25.22. Adjacent door inaccessible
<b>Exterior Stucco</b>	<b>Roof Scattered around Exterior Walls</b>	<b>3,500 SF</b>	<b>N</b>	<b>D</b>	<b>Damage noted in previous inspections appears to have been painted and or repaired. Minimal isolated damage still present where baggage carts impact stucco columns.</b>
12 x 12 Beige with mottled brown Floor Tile and Associated Mastic	1 <sup>st</sup> Floor west stairwell	500 SF	N	G	Observed in stairwell. Missing tile close to door 1191E noted in 2022 still missing.
	2 <sup>nd</sup> Floor west office area hallway in the west mezzanine. rm 2034-2026 and 2051	1,800 SF	N	G	Observed in most halls and offices between Room 2034-2026 and 2051. VFT is still present in Flagship storage room 1019. No changes observed.
Drywall Joint Compound <sup>3</sup>	1 <sup>st</sup> Floor SW Air Office Rm 1011 and 1012	40 SF	N	G	Back Offices
	1 <sup>st</sup> Floor SW Air office # 1	20 SF	N	G	No changes observed
	2 <sup>nd</sup> Floor hallway, rm 2011	30 SF	N	G	No changes observed

**3665 North Harbor Drive: Terminal 1**  
**Locations and Quantities of Asbestos Containing Materials**

Material Description	Material Location	Approximate Quantity	Friable Y/N	Condition	Comments
Drywall Joint Compound <sup>3</sup>	2 <sup>nd</sup> Floor office. rm 2020	25 SF	N	G	No changes observed
	2 <sup>nd</sup> Floor office # 1, rm 2019	35 SF	N	G	No changes observed
	2 <sup>nd</sup> Floor office # 2 see above	75 SF	N	G	No changes observed
<b>Drywall Joint Compound<sup>3</sup></b>	<b>T1E at door T1W1F11</b>	<b>1000 SF</b>	<b>N</b>	<b>D</b>	<b>Minor damage observed in 2022 to the drywall around the tables that impact the right (East) wall the length of the hallway still present 2023.</b>
Drywall and Joint compound	T1W TSA Bag Screen	-500 SF	N	N/A	Approximately 500 SF of this homogenous material on the south wall of the TSA Baggage screen was tested and was NOT found to contain asbestos. An additional 9 samples is recommended by the EPA to change a homogenous material from an ACM designation to non-detect. Please reference 220330 TET T1W TSA Bag Screen A-bulk mini report for more information.
Drywall Joint Compound <sup>3</sup>	Southwest Air door to Ramp	1000 SF	N	G	Small amount of damage to the wall near the floor.
12 x 12 Beige speckled Floor Tile and Associated Mastic	Throughout 1st floor of east rotunda and hallways rm 1057, rm1079E	5,000 SF	N	G	No changes observed
<b>12 x 12 Beige speckled Floor Tile and Associated Mastic</b>	<b>T1E at door T1W1F11</b>	<b>300 SF</b>	<b>N</b>	<b>D</b>	<b>Small areas of damage of the VFT in the hallway were noted. Area is labeled as Retail Concessionaire.</b>

**3665 North Harbor Drive: Terminal 1**  
**Locations and Quantities of Asbestos Containing Materials**

Material Description	Material Location	Approximate Quantity	Friable Y/N	Condition	Comments
12 x 12 Beige with Dark Brown Floor Tile and Associated Mastic	2 <sup>nd</sup> Floor east area offices and hallways, TSA Offices	5,000 SF	N	G	No changes observed
12 x 12 Beige with Dark Brown Floor Tile and Associated Mastic	2 <sup>nd</sup> Floor east stairwell	100 SF	N	G	No changes observed
12 x 12 Beige with Dark Brown Floor Tile and Associated Mastic	1 <sup>st</sup> Floor, Room 1019 Flagship Inventory Room	130 SF	N	G	3 different types of VFT observed. Assumed positive.
<b>Residual black mastic</b>	<b>T1W TSA Bag Screen floor</b>	<b>200 SF</b>	<b>N</b>	<b>D</b>	<b>Mastic still present in June 2023. Damaged residual mastic (5% Chrysotile) was observed and tested on the floor of the TSA baggage screening area, near the lockers. There was approximately 200 SF of damaged mastic. Please reference 220330 TET T1W TSA bag Screen A-bulk mini report from the environmental department for more information.</b>
12 x 12 Beige with brown VFT + Mastic	1 <sup>st</sup> Floor, Room 1019 Flagship Inventory Room	130 SF	N	G	3 different types of VFT observed. Assumed positive.

## 3665 North Harbor Drive: Terminal 1

### Locations and Quantities of Asbestos Containing Materials

Material Description	Material Location	Approximate Quantity	Friable Y/N	Condition	Comments
12 x 12 Beige with Dark Brown VFT and Associated Mastic	2 <sup>nd</sup> Floor east area offices and hallways, TSA Offices	5,000 SF	N	G	7/2023 - Minor isolated damage 2'x2' area of cracked VFT near TSA pre-check X-Ray
12 x 12 Beige with Dark Brown VFT and Associated Mastic	2 <sup>nd</sup> Floor east stairwell	100 SF	N	G	No changes observed
3" Pipe Insulation Elbow <sup>3</sup>	2 <sup>nd</sup> floor janitors' closet	1 EA	N	G	Not observed – assumed present under existing flooring
Fire Doors	East Rotunda 1 <sup>st</sup> floor	7 EA	N	G	Observed at Southwest Airlines ramp break room
Fire Doors	West Rotunda 1 <sup>st</sup> floor	8 EA	N	G	Not observed
Black Mastic associated with various colored 12 x 12 Floor Tile	1 <sup>st</sup> floor Frontier Airlines Offices, hallway, and vestibule. RM 1214, 1216, 1218	1,055 SF	N	G	Rooms 1214, 1216, and 1218. 12"x12" VFT exposed in 1218, under carpet tiles in 1216 & 1218.
12 x 12 White Mottled Brown Floor Tile and Associated Mastic	1 <sup>st</sup> floor Alaska Air offices, hallway, and break room. RM 1019	1,375 SF	N	G	Still present in Flagship office room 1019, approximately 50 ft <sup>2</sup>

## 3665 North Harbor Drive: Terminal 1

### Locations and Quantities of Asbestos Containing Materials

Material Description	Material Location	Approximate Quantity	Friable Y/N	Condition	Comments
Black Mastic	Room 2040 of Old United Offices, beneath carpet	325 SF	N	G	Mastic not visible. Presumed in good condition.
Black Mastic associated with brown and white mottled 12-inch Floor Tile	T1 2nd floor: Hallway outside offices. TIW 2 <sup>nd</sup> level	1,475 SF	N	G	No changes observed.
Brown and Black Mastic and Gray Cementitious Material associated with 3-inch Gray Cove Base	Perimeter of offices in western TSA offices	130 SF	N	G	Rooms 2017 and 2018 have been remodeled recently. Material may be present behind the cove base and in these and other rooms on this floor.
Joint Compound associated with drywall wall system	T1 2nd floor: Smarte Cart office (Room 2004)	800 SF	N	G	No changes assumed.
Black Mastic under 12 x 12-inch mottled VFT	T1 2nd floor: Smarte Cart office (Room 2004), beneath carpet	250 SF	N	G	No changes assumed.
Brown Mastic associated with 6-inch Black Cove Base	Perimeter of hallway outside offices	195 SF	N	G	Mastic not visible. Presumed in good condition. Cove base could be covering mastic in T1E second floor halls and offices. Additional testing is recommended before removing this material from the inventory.

**3665 North Harbor Drive: Terminal 1**  
**Locations and Quantities of Asbestos Containing Materials**

<b>Material Description</b>	<b>Material Location</b>	<b>Approximate Quantity</b>	<b>Friable Y/N</b>	<b>Condition</b>	<b>Comments</b>
12 x 12 inch mottled brown and white Floor Tile and associated Black Mastic	T1E and T1W 2nd floor. Hallway outside offices	1,200 SF	N	G	Confirmed in 2023. Material in good condition.
12 x 12-inch VFT	Frontier Hallway	1,000	N	G	Confirmed in 2023. Material in good condition.
Black Window Sealant	Windows on north side offices throughout 2 <sup>nd</sup> floor	21 windows, 10 SF per window	N	G	No damage was observed.
Mirror Mastic	Behind mirrors in Men's and Women's Restrooms located in East and West 2 <sup>nd</sup> floor office areas	4 mirrors	N	G	Presumed behind mirrors in woman's and men's restrooms 1042R (TIE Level 1)
3" Pipe Insulation Elbows <sup>3</sup>	Throughout Terminal 1, above ceilings on hot water system pipe elbows	Numerous	N	G	Mixture of fiberglass and TSI assumed above T-Grid acoustical ceiling tiles. Inaccessible at time of inspection.

## 3665 North Harbor Drive: Terminal 1

### Locations and Quantities of Asbestos Containing Materials

Material Description	Material Location	Approximate Quantity	Friable Y/N	Condition	Comments
12 by 12 VFT and mastic	Exposed and also under flooring	1,500 SF	N	G	Inventory updated spring 2021. See above comments.
12" x 12" VFT and associated mastic	T1W TSA Checkpoint 3	800 SF	N	G	VFT is cracked below the door number ET1T15 "West Mezzanine". A tile is still missing at the back of the hall August 2023. Mastic is exposed.
Cove base mastic	Bottom of walls in rooms throughout terminal s	1,500 SF	N	G	Cove base mastic removed from rooms 1194, 1195, 196, 1198 on drywall, concrete, and plaster walls. See abatement report from February and March 2019. Cove base mastic removed from JetBlue ticketing counter hallway at west end of T1, behind ticket counter July 2019.

<sup>1</sup>SF =Square Feet; LF =Linear Feet; EA=Each

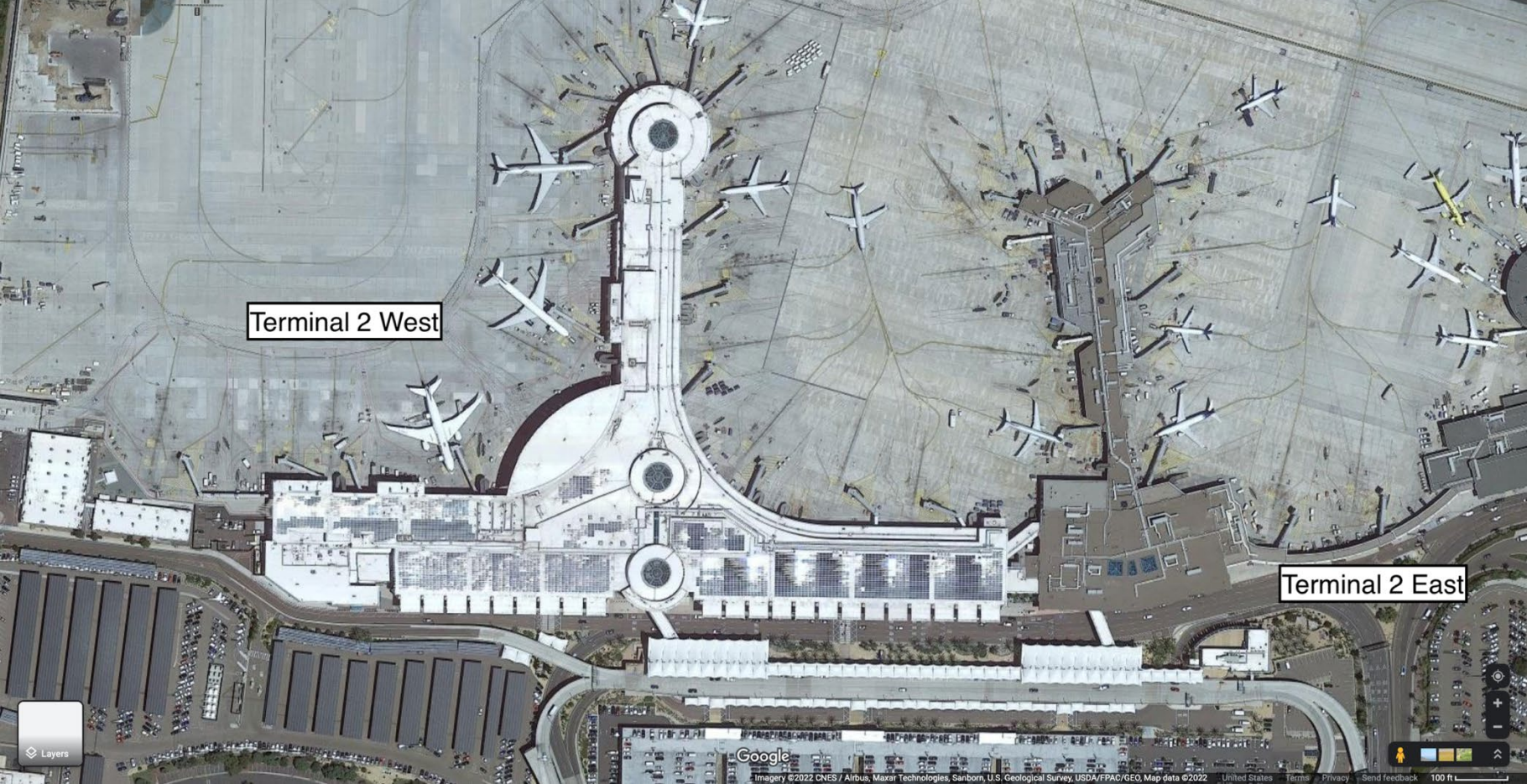
<sup>2</sup>G= Good=Damaged; SD=Significantly Damaged

<sup>3</sup>All elbows should be considered positive unless samples are collected that determine otherwise



# 3707 North Harbor Drive: Terminal 2

## Locations and Quantities of Asbestos Containing Materials



**3707 North Harbor Drive: Terminal 2 East**  
**Locations and Quantities of Asbestos Containing Materials**

<b>Material Description</b>	<b>Material Location</b>	<b>Approximate Quantity</b>	<b>Friable Y/N</b>	<b>Condition</b>	<b>Comments</b>
12 x 12 Mustard Speckled Floor Tile And Associated Mastic	Basement, Foyer	300 SF	N	G	B001, B002, and B003
	Basement, Telephone utility	200 SF	N	G	Room B002
	Basement, relay electric room	100 SF	N	G	Room B003
	West electric room	60 SF	N	G	Room B001A, 12"x12" VFT and mastic was abated from IT closets at north end of first floor in T2E, rooms 1142 and 1143.
	Hallway	50 SF	N	G	Room B150
	NW offices	500 SF	N	G	Room 1099. Room 1096 was confirmed ACM and completely abated in 2019 and is now occupied by Alaska maintenance. New flooring covers old concrete.
	Room floor 1100	400 SF	N	G	Exposed
	Maintenance office floor 1103	150 SF	N	G	Exposed
	AA storage room 1104	300 SF	N	G	Under carpet
	East electric room 1106	80 SF	N	G	Exposed
	Locker room, 1105A and C-127, near restroom 1093. Second floor of Terminal 2	150 SF	N	G	Under carpet in room 1105A. 75ft <sup>2</sup> of 12"x12" and mastic observed in room C-127, near restroom 1093
	<b>Room 1116</b>	<b>1000 SF</b>	<b>N</b>	<b>D</b>	<b>2023- Floor tile still has minor damage near doorway. Does not appear to have progressed since previous inspection. Room is located near Gate 25. Previous inspections called floor tile out as</b>

**3707 North Harbor Drive: Terminal 2 East**  
**Locations and Quantities of Asbestos Containing Materials**

<b>Material Description</b>	<b>Material Location</b>	<b>Approximate Quantity</b>	<b>Friable Y/N</b>	<b>Condition</b>	<b>Comments</b>
12 x 12 Beige with Dark Brown VFT and Associated Mastic					<b>mustard. Correct color scheme is speckled gray.</b>
	Men's Room 1118	50 SF	N	G	Abated Spring of 2022
	Former American Locker room 1122	200 SF	N	G	Under carpet
	Maintenance manager, room 1130	250 SF	N	G	Locked TSA room
	Storage room 1130	100 SF	N	G	
	Siemens Offices room 1131	500 SF	N	G	
	Former Machine shop room 1142	500 SF	N	G	VFT and associated Mastic has been abated. Floor is concrete with gray epoxy coating.
	Hone elevator room, room 1082	130 SF	N	G	12"x12" VFT and mastic was abated from the south end of the first floor in the T2E elevator room, January 2020.
	Hall and rooms 1100, <del>1172</del> , <del>1181</del>	1000 SF	N	G	Quantity increased 2021. Areas were accessed from the ramp. Rooms 1172 and 1181 removed from survey.
12 x 12 Mustard Speckled Floor Tile and Associated Mastic	Former Admiral Club, currently airspace storage	300 SF	N	G	Area has been abated. Gray concrete flooring remains.

**3707 North Harbor Drive: Terminal 2 East**  
**Locations and Quantities of Asbestos Containing Materials**

<b>Material Description</b>	<b>Material Location</b>	<b>Approximate Quantity</b>	<b>Friable Y/N</b>	<b>Condition</b>	<b>Comments</b>
<b>Residual black floor tile mastic</b>	<b>TSA Baggage Screening Area</b>	<b>200 SF</b>	<b>N</b>	<b>D</b>	<b>7/23: Material is no longer present in TSA bag screening area.</b>

<sup>1</sup>SF =Square Feet; LF =Linear Feet; EA=Each

<sup>2</sup>G= Good D=Damaged; SD=Significantly Damaged

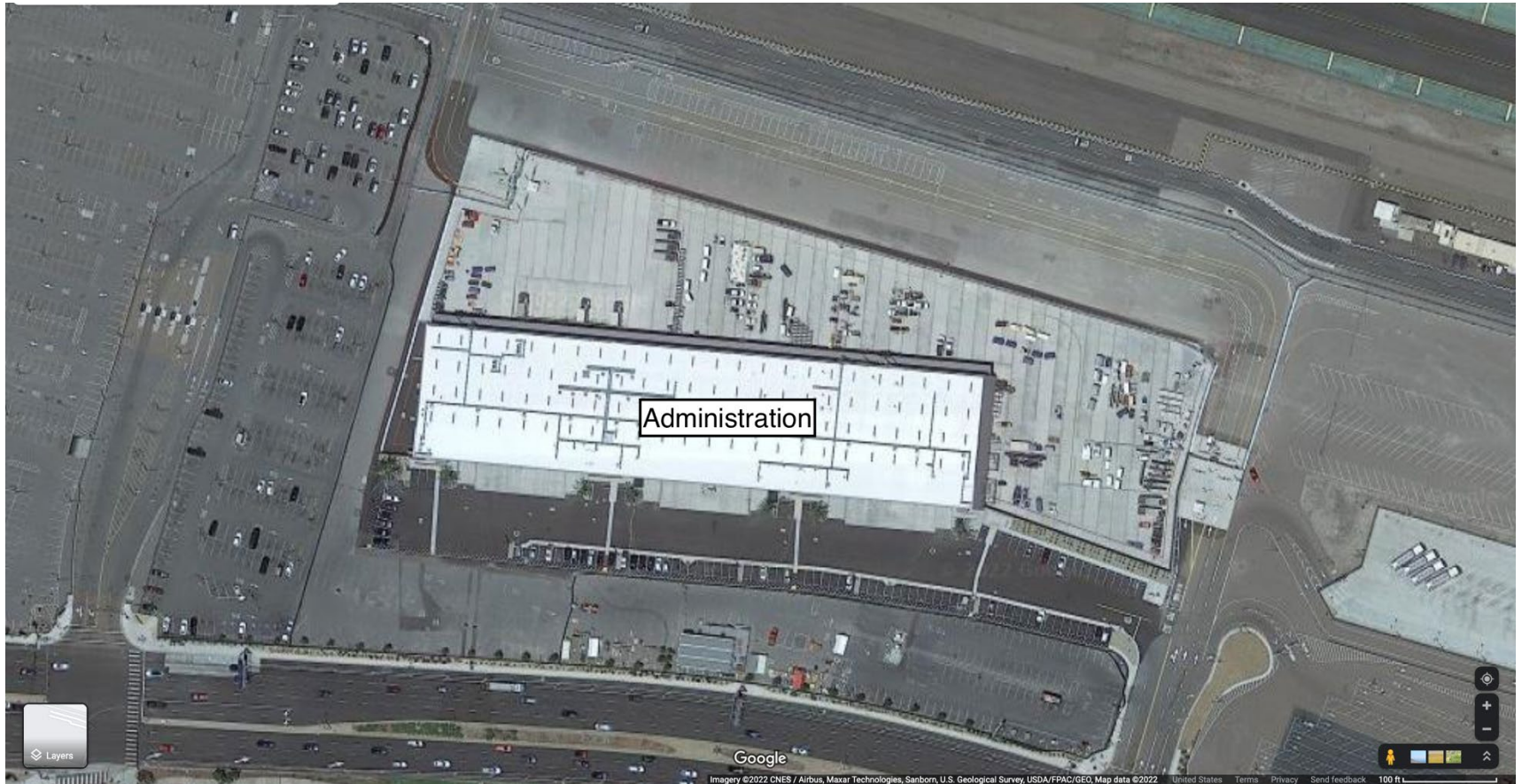
All of this floor type should be considered positive for asbestos unless samples are collected that prove otherwise.

**3835 North Harbor Drive - Terminal 2 West**  
**Locations and Quantities of Asbestos Containing Materials**

<b>Material Description</b>	<b>Material Location</b>	<b>Approximate Quantity</b>	<b>Friable Y/N</b>	<b>Condition</b>	<b>Comments</b>
<b>No known asbestos containing materials in any locations.</b>					

# 3225 North Harbor Drive - Administration Building

## Locations and Quantities of Asbestos Containing Materials



# 3225 North Harbor Drive - Administration Building

## Locations and Quantities of Asbestos Containing Materials

Material Description	Material Location	Approximate Quantity	Friable Y/N	Condition	Comments
Exterior Stucco	On all 4 exterior walls	20,000 SF	N	G	South entrance, chipping on corners of column (2 SF) area has been painted no additional damage.
HVAC Duct Seam Mastic	On ducting throughout the 2 <sup>nd</sup> floor	100 SF	N	G	Some of the material has been removed, some remains
Transite Pipes	1 <sup>st</sup> , 2 <sup>nd</sup> , and 3 <sup>rd</sup> Floors	300 LF	N	G	3 <sup>rd</sup> E fire stair, beams ACM endcap (good condition)
Fireproofing Material	3 <sup>rd</sup> floor at atrium and elevator shafts	500 SF	Y	G	<b>2023 - Fireproofing in atrium no longer present. The Aurora clearance letter from January 2018 states "stucco" was removed from Atrium using a glove-bag method.</b> Elevator shafts inaccessible, assumed intact
Drywall	In elevator shafts	500 SF	Y	G	Elevator shafts inaccessible, assumed intact
Cove base mastic	Stairways and original hallways, rooms, and offices. Former HVAC room second floor.	600 SF	N	G	Material added to inventory March 2020. Observed in all 3 original emergency stairways, west, center, and east. Original PACM cove base observed in original hallway behind former ticketing area on first floor near background check and security offices. Brown cove base mastic observed in the former HVAC room on the second floor. Material is exposed

# 3225 North Harbor Drive - Administration Building

## Locations and Quantities of Asbestos Containing Materials

Material Description	Material Location	Approximate Quantity	Friable Y/N	Condition	Comments
					along the base of the unfinished walls.
Elevator components	Cargo and passenger elevator	100 ft	N	G	Brake components are PACM and the brown gasket/ cushion material on bottom of roll-up cargo elevator door is PACM.

<sup>1</sup>SF =Square Feet; LF =Linear Feet

<sup>2</sup>G=Good D=Damaged SD=Significantly Damaged



## 2722 and 2724 Truxtun Road

### Liberty Station Adjacent to the San Diego International Airport



#### San Diego International Airport

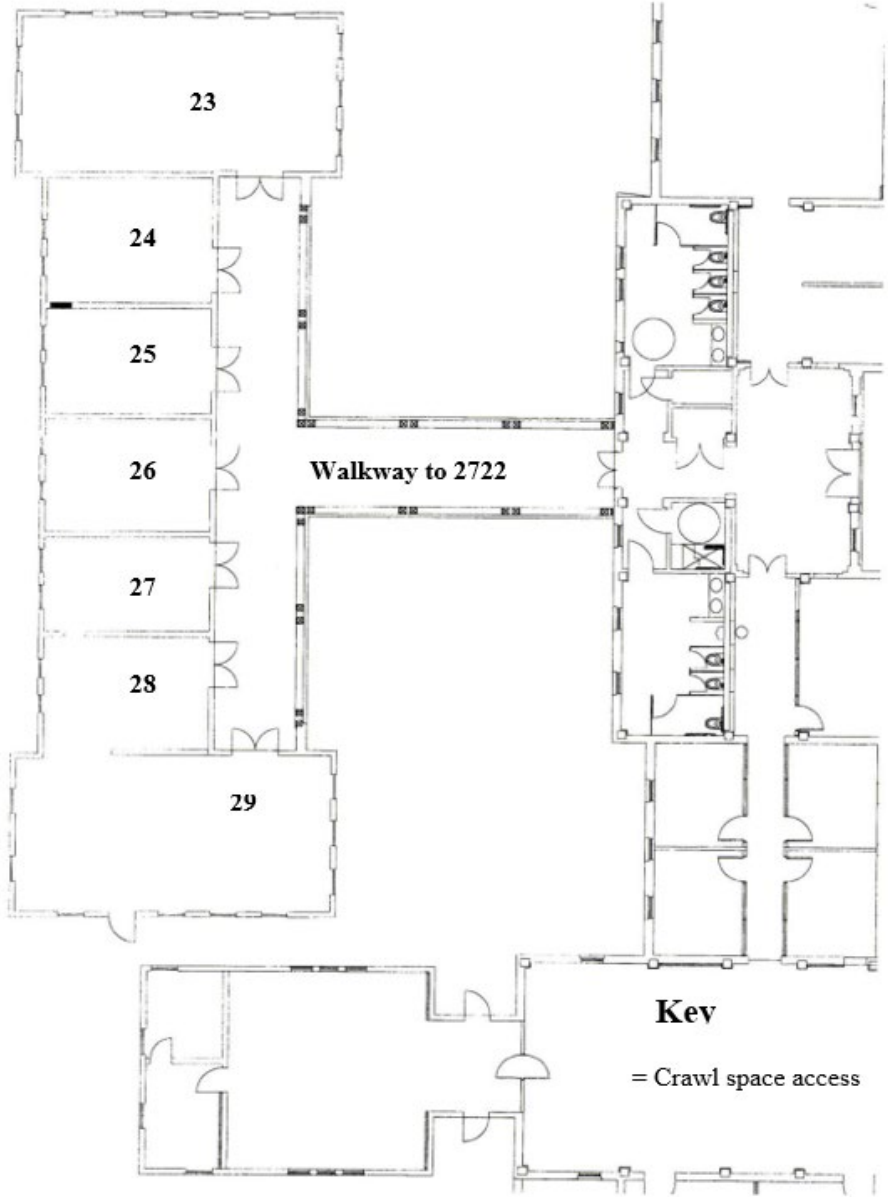
Satellite photo of Liberty Station and the surrounding area. The red square indicates the portion of Liberty Station that is shown in the photo below.

# 2722 and 2724 Truxtun Road



# 2722 and 2724 Truxtun Road

2724 Truxton Road



# 2722 and 2724 Truxtun Road

## 2722 Truxtun Road – East End



# 2722 and 2724 Truxtun Road

## Locations and Quantities of Asbestos Containing Materials 2722 and 2724 Truxtun Road

Room #	Material Description	Material Location	Approximate Quantity	Friable Y/N	Condition	Comments
Exterior	Black/gray roof mastic	On roof of both buildings	110 SF	N	G	Presumed to be asbestos – not sampled. No changes observed.
Exterior	Roll asphalt shingle	On roof of both buildings	9,000 SF	N	G	Presumed to be asbestos – not sampled. No changes observed.
Crawl Space	Transite and TSI	Under both buildings	Unknown	Unknown	Unknown	Material located in a locked and “confined space”. Material was inaccessible for inspection.

1SF =Square Feet; LF =Linear Feet

2G=Good D=Damaged; SD=Significantly Damaged

# ARFF 3698 Pacific Highway

## Locations and Quantities of Asbestos Containing Materials



# ARFF 3698 Pacific Highway

## Locations and Quantities of Asbestos Containing Materials



View of the runway and 3698 Pacific Highway.  
The blue arrow points to 3698 Pacific Highway.

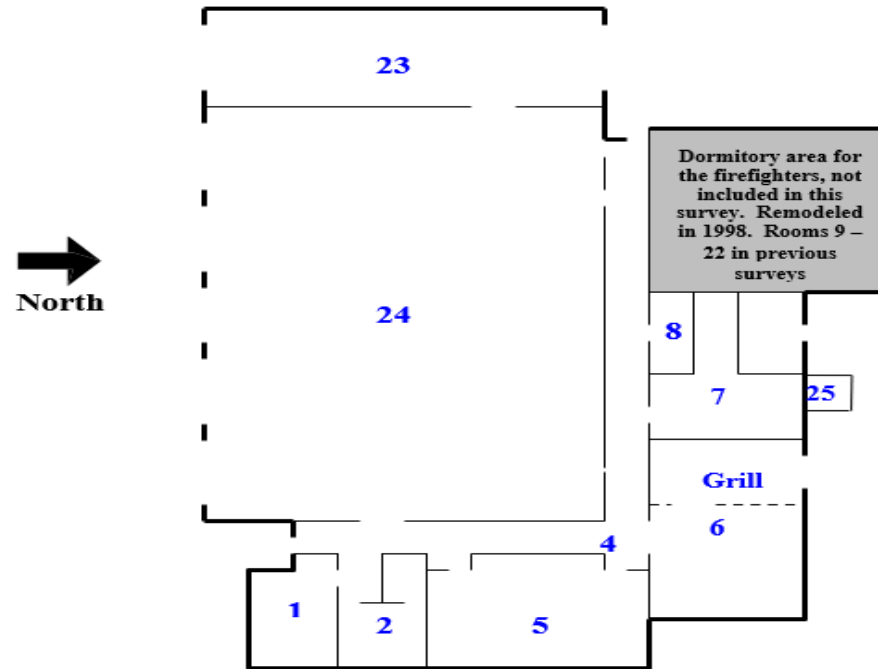


Close-up photo of 3698 Pacific Highway.

# ARFF 3698 Pacific Highway

## Locations and Quantities of Asbestos Containing Materials

3698 Pacific Highway  
1<sup>st</sup> Floor  
Not to Scale



Room #	Room Description
1	Control Room
2	Captains Bedroom/Bathroom
4	Hallway
5	Training Room
6	Kitchen
7	Men's Bathroom and Shower
8	Women's Bathroom
9 – 22	Dormitory Area (Remodeled)
23	Gym
24	Main Garage Area
25	Hot Water Heater Room



# ARFF 3698 Pacific Highway

## Locations and Quantities of Asbestos Containing Materials

Room #	Material Description	Material Location	Approximate Quantity <sup>1</sup>	Friable Y/N	Condition	Comments
23	Drywall and Joint Compound	Ceiling and some walls	2,500 SF	N	G	Holes in drywall noted in 2022 have been repaired. No damage present.
24	Drywall and Joint Compound	Ceiling and some walls	5,800 SF	N	G	Damage previously present on ceiling and west wall has been repaired.
25	TSI elbows (PACM)	Boiler room	4 EA	F	G	1 observed in the exterior water heater closet. 3 more were noticed in the spring of 2021. Others are likely hidden in walls.
Roof	HVAC, Roof assembly and penetrations	Roof	5000 ft <sup>2</sup>	N	G	These items are suspected of containing asbestos. Confirm with analysis before disturbance.

<sup>1</sup>SF =Square Feet; LF =Linear Feet; EA = Each

<sup>2</sup>G=Good D=Damaged; SD=Significantly Damaged

**END**