

MEET *the* PRIMES

9:30 a.m. – 10:30 a.m.

**SESSION
FEATURING**

Swinerton



SAN DIEGO
INTERNATIONAL AIRPORT

LET'S GO.



GETTING TO KNOW SWINERTON

CA License No 92



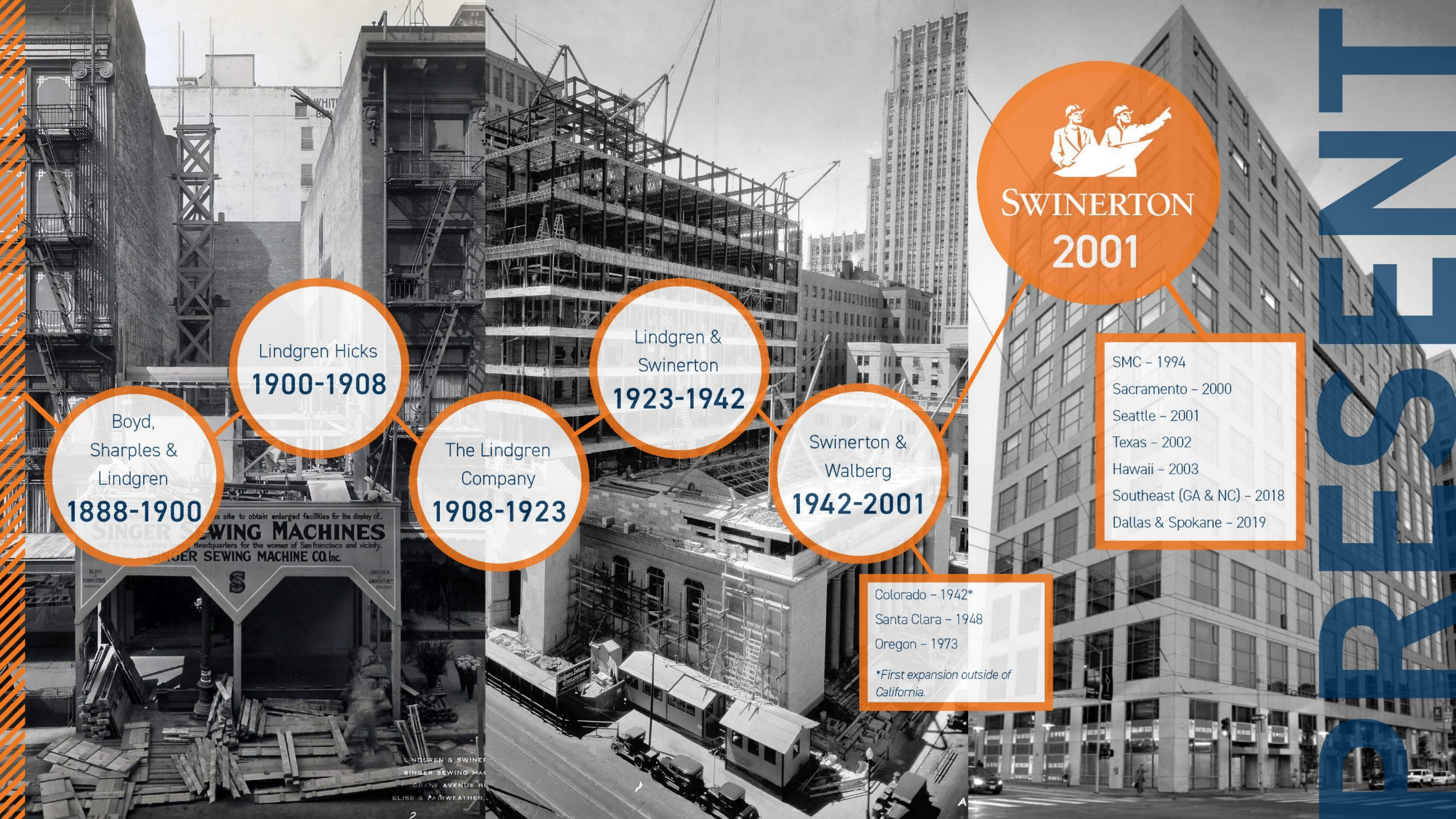
AGENDA

- 1 SWINERTON HIGHLIGHTS
- 2 DOING BUSINESS WITH SWINERTON
- 3 PREQUALIFICATION
- 4 UPCOMING AND CURRENT WORK
- 5 Q&A



SWINERTON HIGHLIGHTS





**SWINERTON
2001**

- SMC - 1994
- Sacramento - 2000
- Seattle - 2001
- Texas - 2002
- Hawaii - 2003
- Southeast (GA & NC) - 2018
- Dallas & Spokane - 2019

**Swinerton &
Walberg
1942-2001**

- Colorado - 1942*
- Santa Clara - 1948
- Oregon - 1973
- *First expansion outside of California.*

**Lindgren &
Swinerton
1923-1942**

**The Lindgren
Company
1908-1923**

**Lindgren Hicks
1900-1908**

**Boyd,
Sharples &
Lindgren
1888-1900**

Headquarters for the women of San Francisco and vicinity.
SINGER SEWING MACHINE CO. Inc.

LINDGREN & SWINERTON
SINGER SEWING MACHINE CO.
GRANT AVENUE BUILDING
BLISS & PARWEATHER

**S
I
N
G
E
R**

GEOGRAPHIC REACH



19
Offices Across the U.S.



3,800
Experts Strong



100%
Employee Owned



220
LEED Accredited Professionals



SWINERTON
MANAGEMENT & CONSULTING

LINDGREN
BUILDING SUPPLY

SWINERTON
RENEWABLE ENERGY

SWINERTON
MASS TIMBER



RANKINGS

#1 ENR-CA TOP CONTRACTOR

#1 ENR-CA GREEN PROJECTS

#1 ENR-CA PRIVATE SECTOR

#1 ENR-CA MULTI-UNIT RESIDENTIAL

#2 ENR-CA HEALTHCARE

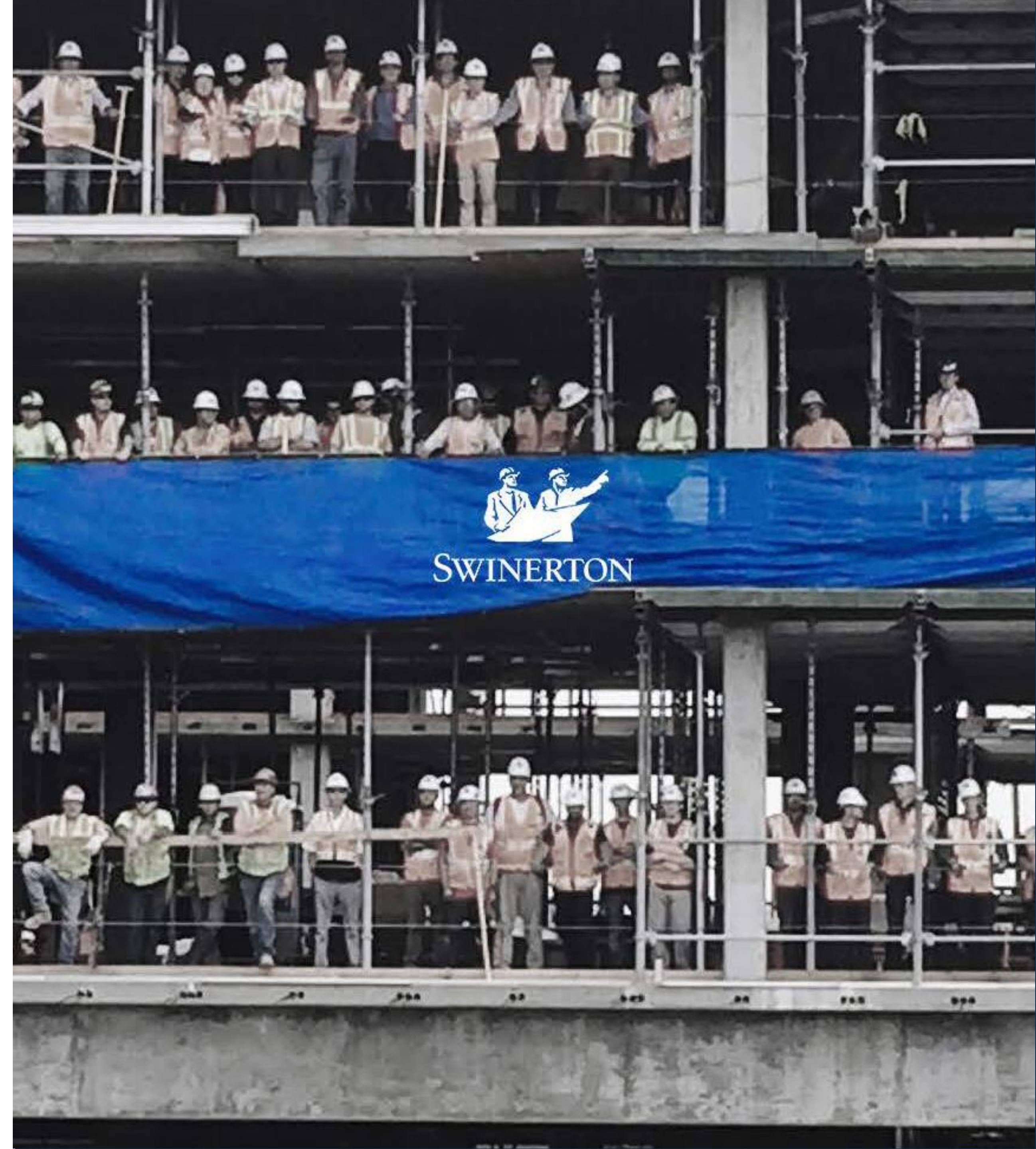
#2 ENR-CA DESIGN-BUILD

#2 ENR-CA HOSPITALITY

#8 ENR-CA EDUCATION

#10 ENR-CA GENERAL CONTRACTING

#18 ENR TOP 400 CONTRACTORS



#1 LARGEST GENERAL CONTRACTOR

SAN DIEGO BUSINESS JOURNAL 2015-2019



#1 BEST PLACES TO WORK

SAN DIEGO BUSINESS JOURNAL 2016-2019



SWINERTON SAN DIEGO

EST. 1993



119
LOCAL SALARIED
EMPLOYEES



27
PROJECT
MANAGERS



215
LOCAL CRAFT
EMPLOYEES



30
SUPERINTENDENTS



SELF-PERFORM

///

- METAL STUD & DRYWALL
- STRUCTURAL CONCRETE
- DOORS, FRAMES & HARDWARE
- ACOUSTIC CEILINGS
- MISC SPECIALTIES
- CLEAN-UP

SWINERTON

TARGET MARKETS



Aviation



Parking Structures



Multi-Family Residential



Gaming



Healthcare



Adaptive Re-Use



Hospitality



Life Science



Office



Higher Education



Tenant Improvement



Education K-14

DOING BUSINESS WITH SWINERTON



DIVERSITY OUTREACH



Swinerton believes that a strong workforce is one that is diverse and inclusive, and we know that developing teams that are diverse in experience, background, and thought has kept us on the leading edge of innovation for decades. We are committed to Fair Employment Practices, and Swinerton provides Equal Employment Opportunities for minorities, females, veterans, people with disabilities, and disabled veterans.



CORPORATE COMMITMENT

Swinerton is strongly committed to promoting and increasing participation of small, minority, women, veteran, and disabled veteran business enterprises in all of their purchasing and contract business.

Our goal to award at least 20% of subcontracting and supplier volume to these valued partners is proudly maintained across all divisions.

BENEFITS

- Helps Firms Achieve Long-term Success
- Enhance Competition
- Provide Real Opportunity



MBE/WBE/DBE/DVB/SB Subcontracting & Supplier Goal Across all Divisions

KEY FOCUS AREAS

Community

Community involvement is key to a successful outreach effort. Swinerton values open honest communication and will seek feedback from the community on what works as well as ways to better serve them. By engaging the community early and often through project specific outreach events and participation in community meetings and events, we strengthen our overall inclusionary efforts.

INCLUSIONARY APPROACH

Education

Swinerton provides technical assistance and education to inclusive businesses. Developing and strengthening the skills and abilities of of inclusive businesses helps businesses build capacity. Our supportand mentoring programs help ensure the continued success of those firms, well beyond the duration of the current project.



Resources

Swinerton provides inclusive businesses with the resources needed to achieve success. From prequalification to bonding and financial assistance, we are there every step of the way to support our inclusive business partners.

Opportunity

Swinerton structures bid packages in a way that maximizes inclusive business participation. We provide opportunities that are realistic and accessible to these businesses. Creating the right opportunities will open the door for inclusive businesses to be successfully utilized.

Commitment

The commitment to utilizing inclusive businesses runs throughout Swinerton. This commitment is not a "box to be checked" but rather a mentality adopted by every member of our team. Together we can make an impact and ensure we are stimulating our inclusive business communities.

SAN DIEGO AIRPORT TERMINAL 2 PARKING PLAZA

CONTRACTING RESULTS

AGENCY GOALS

SBE: 35%

LOCAL: 80%

PARTICIPATION

SBE: 42.72%

LOCAL: 80%

VALUE

\$94,725,986



SWINERTON PREQUALIFICATION



PREQUAL

- Any **Subcontractor** working for Swinerton, or interested in working for Swinerton, must be prequalified in order to be awarded a contract.
- Prequal application is submitted online
- Supporting documents submitted via electronic upload
- **New Subcontractors:** Use link on our website to access application
- **Renewing Subcontractors:** Email subcontractorprequal@swinerton.com for a unique link and password
- All subcontractors must renew annually to keep prequalification status active

PREQUAL



FINANCIAL

Income Statement, Balance Sheet, Line of Credit Letter



CONTRACTOR'S LICENSE

California

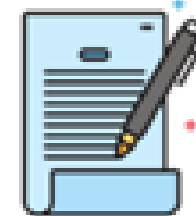


INSURANCE

General Liability, Worker's Compensation



Form W-9



BONDING

Letter of Bondability



SAFETY

EMR, OSHA Forms



CERTIFICATIONS – SBE, MBE, WBE, DVBE, etc.



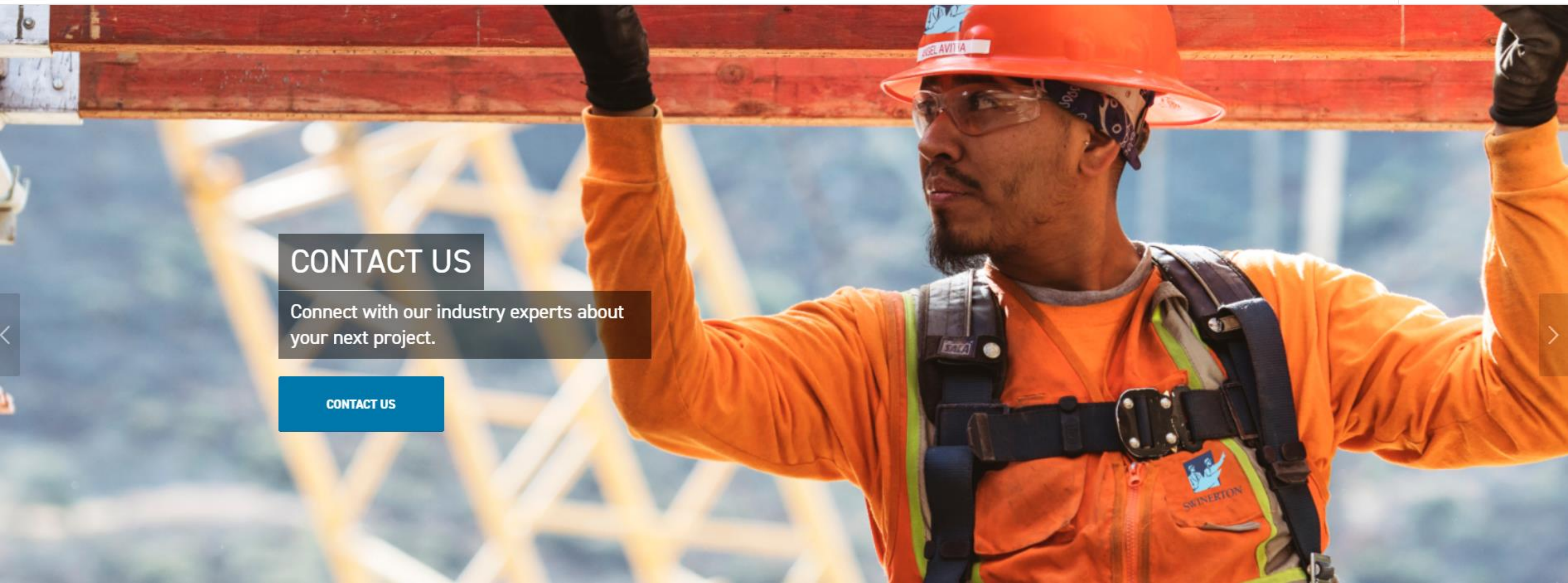
PREQUAL



Swinerton Website: www.swinerton.com



[COVID-19](#) [About](#) [Projects](#) [Markets](#) [Careers](#) [Locations](#) [News & Media](#) [Contact](#) [🔍](#)



CONTACT US

Connect with our industry experts about your next project.

[CONTACT US](#)

UPCOMING AND CURRENT WORK



SAN ADMIN BUILDING

SWINERTON

Gensler

miyamoto.

ARORA

NEW ADMINISTRATION BUILDING

MARKET: AVIATION, OFFICE

McCain Road

AIRPORT TERMINAL RD.

GATE 51
GATE 50
GATE 49

ON-SITE PARKING
(18 SPACES)

ADA

ADA

ADA

ADA

ADA

ADA

ADA

ADA

ADA

ADA

ADA

ADA

ADA

ADA

ADA

ADA

ADA

ADA

ADA

ADA

ADA

ADA

ADA

ADA

SERVICE ENTRY

VISITOR OVER-CUP

ON-SITE PARKING
(2 SPACES)

STOP

STOP

STOP

STOP

STOP

STOP

STOP

STOP

STOP

STOP

STOP

STOP

STOP

STOP

STOP

STOP

STOP

STOP

STOP

STOP

STOP

STOP

STOP

STOP

STOP

STOP

STOP

STOP

STOP

STOP

STOP

STOP

STOP

STOP

STOP

STOP

STOP

STOP

STOP

STOP

STOP

STOP

STOP

STOP

STOP

STOP

STOP

STOP

STOP

STOP

STOP

STOP

STOP

STOP

STOP

STOP

STOP

STOP

STOP

STOP

STOP

STOP

STOP

STOP

STOP

STOP

STOP

STOP

STOP

STOP

STOP

STOP

STOP

STOP

STOP

STOP

STOP

STOP

STOP

STOP

STOP

STOP

STOP

STOP

STOP

STOP

STOP

STOP

STOP

STOP

STOP

STOP

STOP

STOP

STOP

STOP

STOP

STOP

STOP

STOP

STOP

STOP

STOP

STOP

STOP

STOP

STOP

STOP

STOP

STOP

STOP

STOP

STOP

STOP

STOP

STOP

STOP

STOP

STOP

STOP

STOP

STOP

STOP

STOP

STOP

STOP

STOP

STOP

STOP

STOP

STOP

STOP

STOP

STOP

STOP

STOP

STOP

STOP

STOP

STOP

STOP

STOP

STOP

STOP

STOP

STOP

STOP

STOP

STOP

STOP

STOP

STOP

STOP

STOP

STOP

STOP

STOP

STOP

STOP

STOP

STOP

STOP

STOP

STOP

STOP

STOP

STOP

STOP

STOP

STOP

STOP

STOP

STOP

STOP

STOP

STOP

STOP

STOP

STOP

STOP

STOP

STOP

STOP

STOP

STOP

STOP

STOP

STOP

STOP

STOP

STOP

STOP

STOP

STOP

STOP

STOP

STOP

STOP

STOP

STOP

STOP

STOP

STOP

STOP

STOP

STOP

STOP

STOP

STOP

STOP

STOP

STOP

STOP

STOP

STOP

STOP

STOP

STOP

STOP

STOP

STOP

STOP

STOP

STOP

STOP

STOP

STOP

STOP

STOP

STOP

STOP

STOP

STOP

STOP

STOP

STOP

STOP

STOP

STOP

IN THE
WORKS...



UPCOMING PROJECT OPPORTUNITIES

Southwest Airlines

United Airlines

Union & Ash

The Lindley

Farkas Building

13th & Broadway

Emmes 707 Broadway

Sunroad Harbor Island

PMA/HPP - 3030 Callan

4th & B

Caydon California Theater

Legoland Castle Hotel

Whitman Elementary

BOARDWALK



MARKET: COMMERCIAL OFFICE,
PARKING STRUCTURE

KETTNER & HAWTHORN



MARKET: DOWNTOWN
COMMERCIAL OFFICE

9455 TOWNE CENTRE



MARKET: COMMERCIAL OFFICE,
PARKING STRUCTURE

MEDIIMPACT WATERMARK



MARKET: COMMERCIAL OFFICE,
PARKING STRUCTURE



JOHN FOSTER
PROJECT EXECUTIVE
858.245.0166
jfoster@swinerton.com



KIM PATTON
OUTREACH MANAGER
619.209.9497
kpatton@swinerton.com



MEAGAN MACIAS
PREQUALIFICATION
858.815.2417
mmacias@swinerton.com



Q & A

WWW.SWINERTON.COM

MEET *the* PRIMES

www.SANMTP2020.Eventbrite.com



JOIN US AT OUR UPCOMING MEET THE PRIMES SESSIONS

Tues., Oct. 27, 2020

4 p.m. - 5 p.m. Turner Construction

Wed., Oct. 28, 2020

8 a.m. - 9 a.m. Hensel Phelps

9 a.m. - 10 a.m. Sundt Construction

2 p.m. - 3 p.m. Clark Construction

4 p.m. - 5 p.m. Jacobs

Thurs., Oct. 29, 2020

9:30 a.m. - 10:30 a.m. AECOM

11 a.m. - 12:30 p.m. Airport Concessionaire Panel

Featuring:
Hudson Group,
HMSHost,
S&C Robinson Enterprise
SSP America
S. Levy Foods

3 p.m. - 4:30 p.m. Airport Concessionaire Panel

Featuring:
Mission Yogurt
SFS Beauty Ca, LLC
P&P Services, LLC
High Flying Foods
Procurement Concepts Inc.

Tues., Nov. 3, 2020

8:30 a.m. - 9 a.m. Small Business Development Dept.

9:30 a.m. - 10 a.m. Facilities Management Dept.

10:30 a.m. - 11 a.m. Procurement Dept.

11:30 a.m. - 12 p.m. Labor Compliance Dept.

1:30 p.m. - 2 p.m. Revenue Generation &
Partnership Development - Food & Beverage/Retail

2:20 p.m. - 3 p.m. Quieter Home Program

4 p.m. - 5 p.m. Airport Design & Construction

Wed., Nov. 4, 2020

10 a.m. - 11:30 a.m. Public Agencies & Business Support
Services Panel, Featuring:

Procurement Technical Assistance Center (PTAC), SANDAG,
CALTRANS District 11, County of San Diego, North County
Transit District, San Diego County Water Authority, Port of
San Diego, University of California San Diego

1 p.m. - 2 p.m. Public Agencies & Business Support
Services Panel, Featuring:

San Diego & Imperial Valley Small Business Development
Center (SBDC), City of San Diego, San Diego Unified
School District, U.S. Veteran Business Alliance (USVBA) San
Diego Chapter, Business Incentive Credits