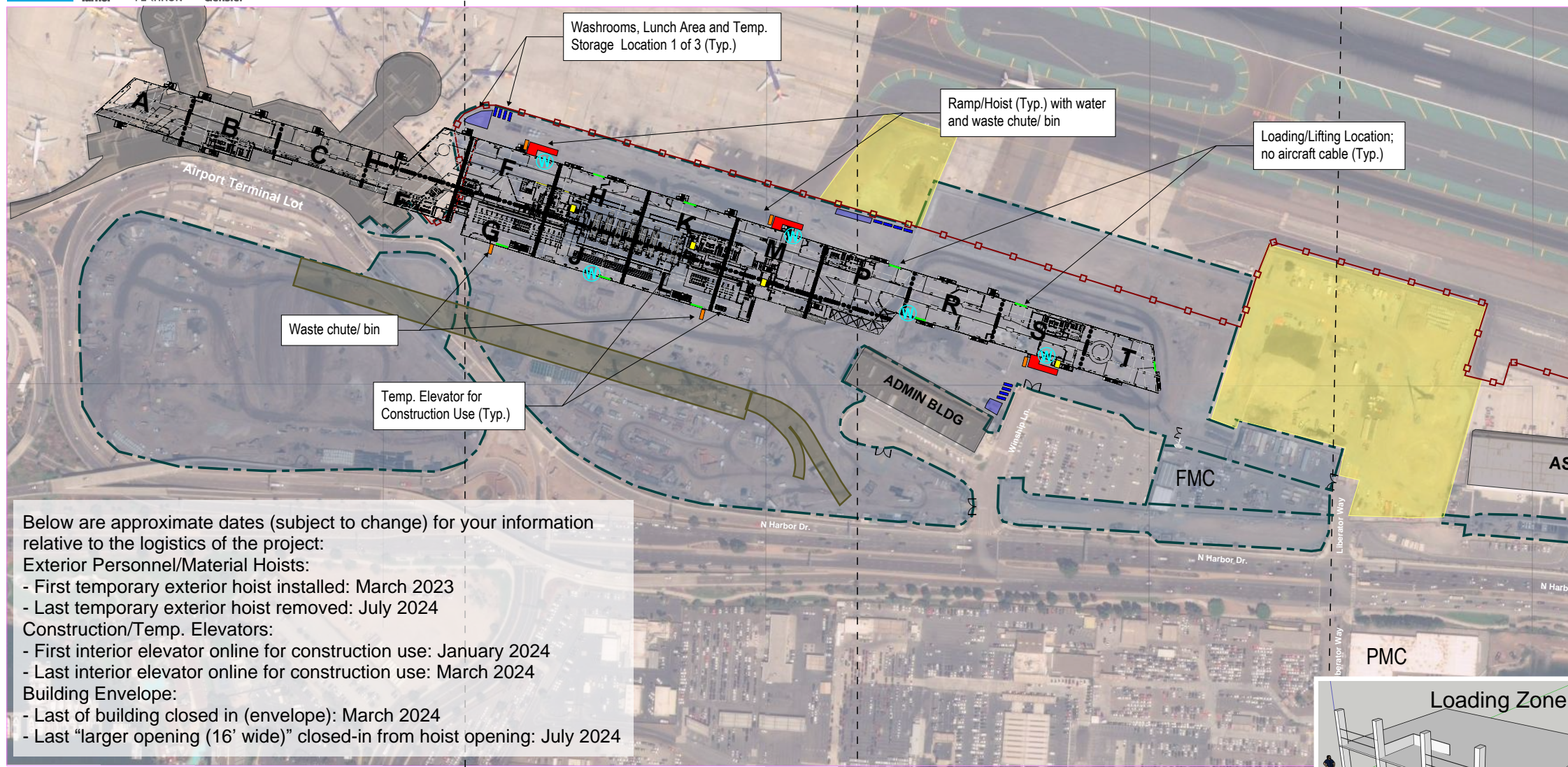


# T1RP - Exterior/Interior Logistics Plan



Below are approximate dates (subject to change) for your information relative to the logistics of the project:

**Exterior Personnel/Material Hoists:**

- First temporary exterior hoist installed: March 2023
- Last temporary exterior hoist removed: July 2024

**Construction/Temp. Elevators:**

- First interior elevator online for construction use: January 2024
- Last interior elevator online for construction use: March 2024

**Building Envelope:**

- Last of building closed in (envelope): March 2024
- Last "larger opening (16' wide)" closed-in from hoist opening: July 2024

