

Integrated Airline Services

SIC Codes	4513	Contact Information	
Primary Activity	Maintenance (Aircraft & GSE)	Matthias Manalo	Manager
Drainage Areas	3, 5, 6	P 6192258437	C 6193065843
Nearest MS4 Inlet		mmanalo@iasair.com	
Address	3225 North Harbor Dr. San Diego, CA 92101	Jim Berardi	Crew - Maintenance C 6199933211
		jberardi@iasair.com	

Facility Description and Activities

**IAS was bought out in 2013 by CAS. The merge was still in progress as of Oct, 2014.

1. Previously subleased property from the Airport through ATI, but now operates independently and does not have a current lease contract.
2. Operations are located West of P04 Gate (UPS) and on the DHL ramp.
3. For UPS, IAS provides ground handling services and for DHL they provide ground handling services and equipment.
4. Steam wash vehicles at the ASIG wash rack. The K-loader cannot be transported to the wash rack and is currently only dry cleaned.
5. Landmark fuels the vehicles and equipment on an on-call basis.
6. Jim Berardi is in charge of maintenance of all equipment and vehicles. All materials are stored in the maintenance trailer.

Significant Materials/Activities Potentially Exposed to Storm Water

Potential Pollutant Sources

Cargo handling
Equipment storage
Fluid leaks
Fuel spills, Fuel transfer
Fuel storage
Material loading/unloading
Outdoor waste storage
Tank fuel transfer
Trash collection

Potential Pollutants

Anti Freeze
Battery Acid
Carburetor Cleaner
Cleaning Solutions
Coolant
Degreasers
Degreasers (Citrus based)
Hydraulic Fluids
Lubricants
Metals
Oil & Grease

Paints

Recyclables

Sealants

Sediment

Solvents

Transmission Fluid

Trash

Best Management Practices Applicable to Facility

Activities

Non-Storm Water Management

Outdoor Equipment Ops Maintenance Areas

Aircraft, Ground Vehicle & Equipment
Maintenance

Aircraft, Ground Vehicle & Equipment Fueling

Aircraft, Ground Vehicle & Equipment Cleaning

Outdoor Loading/Unloading of Materials

Outdoor Material Storage

Waste Handling & Disposal

Employee Training

Housekeeping

Safer/Alternative Products

Spill Prevention, Control & Clean Up

BMPs

SC01 - 1, 2, 4

SC02A - 1, 2

SC02B - 1, 2, 3, 4, 5, 6, 7, 8, 9, 10, 11, 12, 13

SC03 - 1, 2, 3, 4, 5, 6, 8

SC04 - 1, 2, 3, 4, 5, 7, 8

SC06 - 1, 2, 3, 4, 5, 6, 7

SC07 - 1, 2, 3, 7, 12

SC08 - 1, 2, 3, 4, 5, 7, 8, 9, 10, 11, 12, 14

SC10 - 1, 2, 3, 4

SC18 - 1, 2, 3, 4, 5, 6, 7, 8, 9

SC19 - 1, 2

SR01 - 1, 2, 3, 4, 5, 6, 7, 8, 9, 10

* Appendix B provides descriptions for each BMP category.

Structural Control measures used by facility:

Materials Storage Area

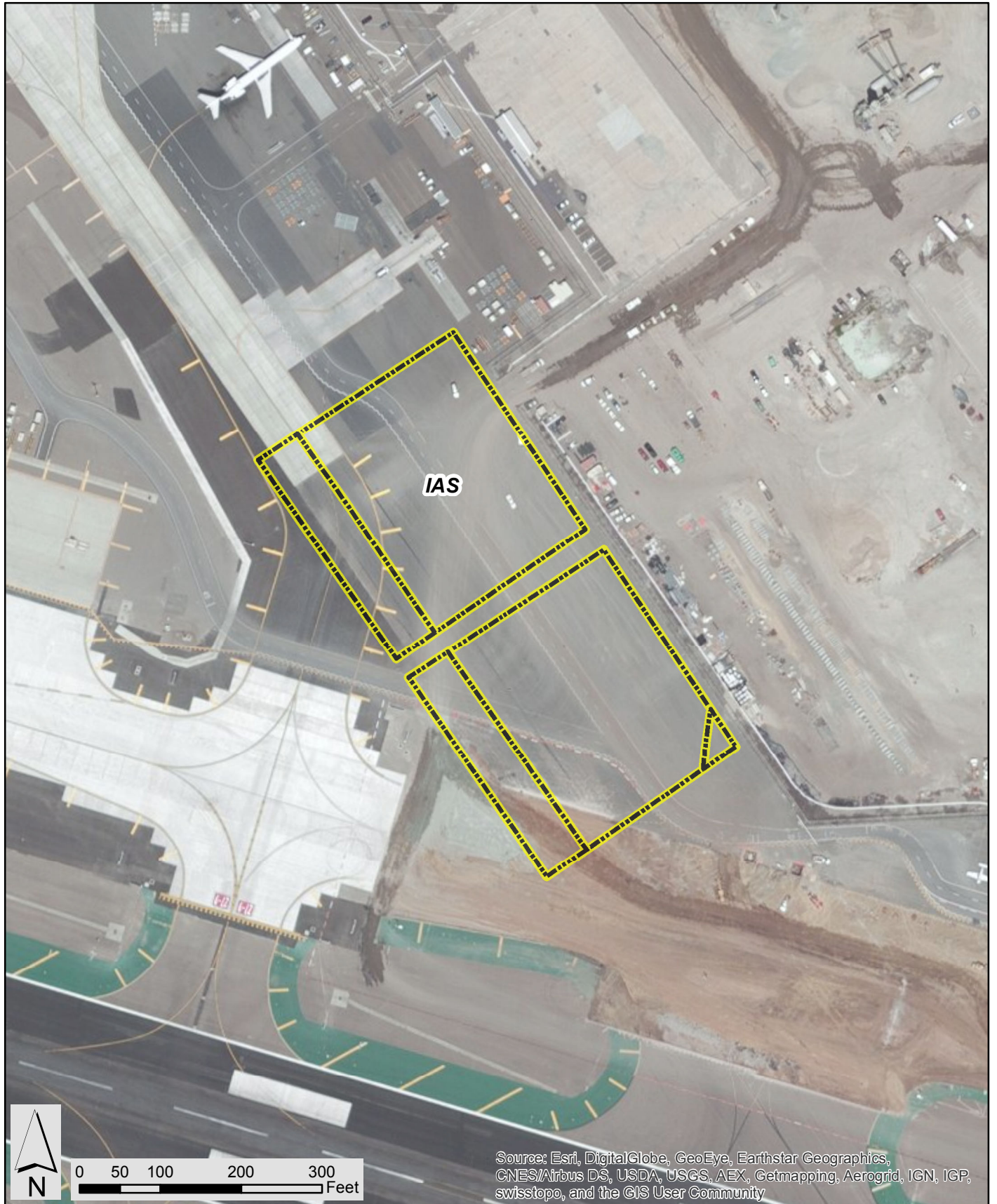
North ramp maintenance trailer

Materials Storage Amounts

No materials recorded over 55 gallons

Shipping/Receiving Area

Not recorded



PROJECT NO.:
5025-13-0031
DATE: JUNE 2015
DRAWN BY: RMH
CHECKED BY: AJA

amec foster wheeler



IAS
Operating Areas
San Diego International Airport

FIGURE

E-20

Intentionally Left Blank