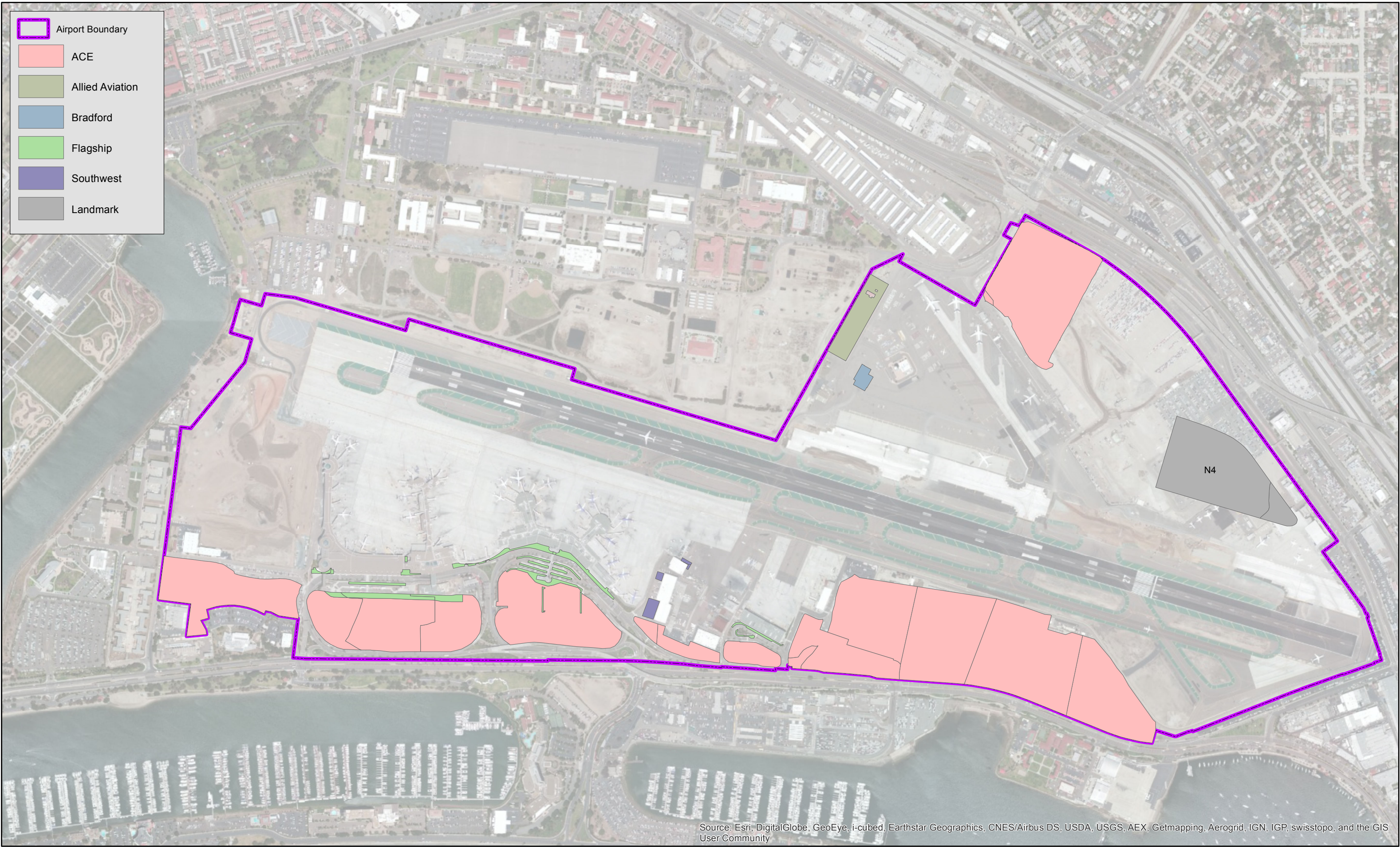


| BMP SC16  | PARKING LOTS |   |
|---|--------------|---|
| <b>PURPOSE:</b><br>Prevent and reduce the discharge of pollutants from parking areas.   |              | <b>TARGETED ACTIVITIES:</b><br>➔ Vehicle parking<br>➔ Surface cleaning and maintenance<br>➔ Litter control  |
| <b>POLLUTION PREVENTION:</b><br><div> <input type="checkbox"/> Implement the following pollution prevention practices and BMPs to prevent non-storm water discharges from parking areas to the storm water collection system:<br/><br/> <input type="checkbox"/> Install treatment control BMPs, where practicable, in parking lot areas to treat parking lot runoff.<br/><br/> <input type="checkbox"/> Design parking lot areas to include semi-permeable hardscape and Low Impact Development practices.<br/><br/> <input type="checkbox"/> Inspect and maintain sweeping equipment regularly to ensure effectiveness at removing pollutants and to avoid leaks.<br/><br/> <input type="checkbox"/> Sweep parking lots regularly and before onset of wet season.           </div>  |              | <b>POLLUTANTS of CONCERN:</b><br><br>➔ Trash<br>➔ Suspended solids<br>➔ Hydrocarbons<br>➔ Oil and grease<br>➔ Heavy Metals                                      |
| <b>OPERATIONS:</b><br><b>Sub-BMPs</b><br>- 01 <input type="checkbox"/> Post “No Littering” signs around parking lots and regularly empty trash receptacles. Trash receptacles must be covered.<br><br>- 02 <input type="checkbox"/> Sweep all parking lot areas on a regular basis to remove accumulated debris and sediment.<br><br>- 03 <input type="checkbox"/> Operate sweepers at manufacturer-recommended optimal speeds.<br><br>- 04 <input type="checkbox"/> Perform sweeping in parking lot areas when the number of parked vehicles is lowest to maximize areas swept.<br><br>- 05 <input type="checkbox"/> Maintain records of the sweeping activities including the miles swept and the amount of waste collected.<br><br>- 06 <input type="checkbox"/> Clean oily spots from parking lot surfaces with absorbent materials.<br><br>- 07 <input type="checkbox"/> Perform all repairs to parking lot surfaces during periods of dry weather.<br><br>- 08 <input type="checkbox"/> Cover and seal nearby storm drain inlets, catch basins, and manholes during parking lot repairs.<br><br>- 09 <input type="checkbox"/> Use drip pans and absorbent materials to catch and collect drips and leaks from paving equipment that are not in use.<br><br>- 10 <input type="checkbox"/> Hot bituminous materials used for parking lot repairs are to be preheated and transferred or loaded away from storm drain inlets.<br><br>- 11 <input type="checkbox"/> Properly dispose of used absorbent materials, debris, and collected |              | <b>APPLICABLE TENANTS/ DEPARTMENTS:</b><br><br>➔ ACE<br>➔ Allied Aviation<br>➔ ARFF<br>➔ ASIG<br>➔ Bradford<br>➔ FedEx<br>➔ Landmark<br>➔ SDCRAA<br>➔ Southwest |

|   |  |                     |
|---|--|---------------------|
| <div data-bbox="233 184 313 212">- 12 <input type="checkbox"/></div> <div data-bbox="233 275 313 302">- 13 <input type="checkbox"/></div> <div data-bbox="233 365 313 392">- 14 <input type="checkbox"/></div>  | <p>drips.</p> <p>Avoid draining rooftop downspout drains onto paved parking lot surfaces.</p> <p>Sweep, vacuum, or use other dry methods to remove waste materials generated from repairs.</p> <p>Temporarily store waste materials and debris generated from parking lot repairs in containers or in stockpiles with cover and berm around them and away from storm drain inlets.</p> <p style="text-align: center;"><b>SEE ALSO BMP SC21</b></p> |                     |
| <p><b>STRUCTURAL TREATMENT BMPs:</b> Refer to BMP TC01 for information on structural treatment BMPs.</p>  |  |                     |
| <p><b>BMP FREQUENCIES/EQUIPMENT/TOOLS:</b> Sweeping of parking lots occurs five days a week or as described in Section 6.0. Equipment/tools to implement BMPs include mechanical and regenerative air sweepers, drip pans, spill kits, brooms, and drums.</p> |  |                     |
| <p><b>AUTHORIZED LOCATIONS TO IMPLEMENT BMPs FOR PARKING LOTS:</b></p>  |  |                     |
| <div data-bbox="282 768 313 795"><input type="checkbox"/></div>   | <p>To reduce pollutants in parking lot storm water discharges, implement BMPs in areas as shown in the attached map.</p>   |                     |
| <p>Date:</p>  |  | <p>Version: 2.0</p> |





Source: Esri, DigitalGlobe, GeoEye, i-cubed, Earthstar Geographics, CNES/Airbus DS, USDA, USGS, AEX, Getmapping, Aerogrid, IGN, IGP, swisstopo, and the GIS User Community



Intentionally Left Blank