

SSP

SIC Codes	5812	Contact Information	
Primary Activity	Food & Beverage	Ed Hartless	Director of Operations
Drainage Areas	08, 12	P 6192970095	C 6192003850
Nearest MS4 Inlet	200 - 1000 ft.	ed.hartless@foodtravelexperts.com	
Address	3225 North Harbor Dr. San Diego, CA 92101	Mario Donato	Manager - Ops
		P 6192447590	mario.donato@foodtravelexperts.com

Facility Description and Activities

1. Currently operates out of T1 West and T2 East and West.
2. Operates two battery operated golf carts which are dry washed as needed.
3. Flagship picks up waste, recycling, and compost directly from stores. SSP uses 2 dumpsters for trash and cardboard at T2 East and T1 West.
4. Bradford picks up grease directly from the stores 3 times per week and delivers back to CRDC.
5. Participates in airport's composting program. The first three compost loads (monitored under an initial probationary period) taken to the dump were free of contamination. Green waste is checked quality control.
6. Outdoor loading area is located next to Gate 10 and at Gate 11.
7. Dry good storage is located in the storage room within the breezeway at Gate 25.
8. Perishable items are received within ten (10) minutes. Dry goods are received within forty-five (45) minutes. Bradford drops off materials at Gate 25.
9. Bradford picks up the wash rags and brings back to CRDC. Aramark is a vendor that collects the wash rags at CRDC and provides the cleaning services of the wash rags that are used in the restaurants.

Significant Materials/Activities Potentially Exposed to Storm WaterPotential Pollutant Sources

Fluid leaks
Material loading/unloading
Outdoor waste storage
Trash collection

Potential Pollutants

Battery Acid
Cleaning Solutions
Food Waste
Oil & Grease
Trash

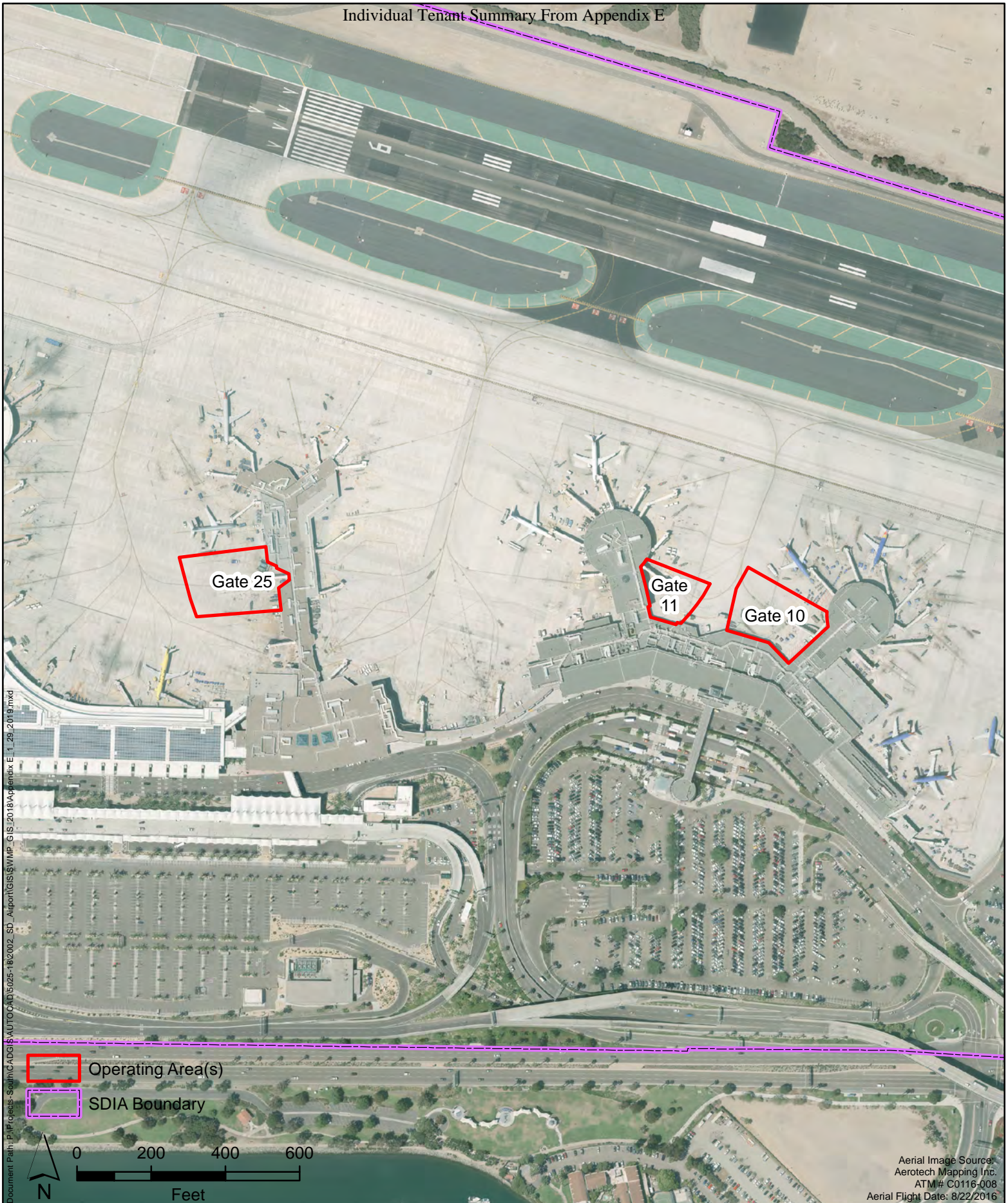
Best Management Practices Applicable to FacilityActivities

Non-Storm Water Management
Outdoor Equipment Ops Maintenance Areas
Aircraft, Ground Vehicle & Equipment Maintenance
Electric Vehicle Maintenance
Aircraft, Ground Vehicle & Equipment Cleaning
Outdoor Loading/Unloading of Materials
Outdoor Material Storage
Waste Handling & Disposal
Employee Training
Housekeeping
Safer/Alternative Products
Spill Prevention, Control & Clean Up

BMPs

SC01 - 1, 2, 4
SC02A - 1, 2
SC02B - 1, 4, 5, 6
SC02C - 1, 2, 3, 4, 5, 6, 7, 8, 9
SC04 - 1, 2
SC06 - 1, 2, 3, 6, 7
SC07 - 1, 2, 3, 12
SC08 - 1, 2, 3, 4, 5, 7, 8, 9, 10, 11, 12, 14
SC10 - 1, 2, 3, 4
SC18 - 1, 2, 3, 4, 5, 6, 7, 8, 9
SC19 - 1, 2
SR01 - 1, 2, 3, 4, 5, 6, 7, 8, 9

* Appendix B provides descriptions for each BMP category.



PROJECT NO.:
5025-18-2002

DATE:
JANUARY 2019

DRAWN BY:
CAB

CHECKED BY:
AA/NP

wood.

SAN DIEGO INTERNATIONAL AIRPORT

**SSP
Operating Areas**

FIGURE

E-32

Intentionally Left Blank