

## Appendix B – Best Management Practices

BMP SC14		POTABLE WATER SYSTEM FLUSHING	
<b>PURPOSE:</b> To prevent the discharge of pollutants to storm water drains associated with flushing and cleaning of aircraft potable water systems.		<b>TARGETED ACTIVITIES:</b> ➔ Aircraft potable water system cleaning and flushing ➔ Water truck cleaning and flushing	
<b>POLLUTION PREVENTION:</b>		<b>POLLUTANTS of CONCERN:</b>	
<input type="checkbox"/> Implement the following pollution prevention practices and BMPs to prevent discharges from potable water system flushing:  <input type="checkbox"/> Perform flushing activities within designated areas that divert the flushed water away from the storm drain system whenever possible.  <input type="checkbox"/> <b>DO NOT DISCHARGE WASTE WATER OR CLEANING AGENTS TO A CATCH BASIN OR STORM DRAIN.</b> Notify Airport Operations (619-400-2710) and the Airport Authority Environmental Affairs Department (619-400-2784) if any discharges associated with flushing and cleaning of aircraft potable water systems have occurred.	➔ Chlorine Bleach ➔ Purine		
<b>OPERATIONS:</b>		<b>APPLICABLE TENANTS/ DEPARTMENTS:</b>	
<b>Sub-BMPs</b> - 01 <input type="checkbox"/> The aircraft potable water system and water truck flushing/cleaning areas should not be located directly in the path of storm drains.  - 02 <input type="checkbox"/> Perform potable water system flushing only in designated flushing/cleaning areas that capture or divert all wastewater away from storm drains, or to a structural treatment control, sanitary sewer, or dead end sump with pump.  - 03 <input type="checkbox"/> Prevent flushing/cleaning areas from contacting storm water run-on and run-off.	➔ Air Canada ➔ Alaska ➔ Allegiant ➔ American Airlines ➔ British Airways ➔ Edelweiss ➔ FedEx ➔ Frontier ➔ Hawaiian ➔ Jet Blue ➔ Southwest ➔ Spirit ➔ WestJet		
<b>STRUCTURAL TREATMENT BMPs:</b> Refer to BMP TC01 for information on structural treatment BMPs.			
<b>BMP FREQUENCIES/EQUIPMENT/TOOLS:</b> Potable water system flushing frequencies and tools are described in Section 3.0.			
<b>AUTHORIZED LOCATIONS FOR POTABLE WATER SYSTEM FLUSHING/CLEANING:</b>			
<input type="checkbox"/> Use only the designated areas for aircraft potable water system flushing/cleaning as shown in the attached map.			
Date:		Version: 2.0	

Individual BMP From:  
**Appendix B – Best Management Practices**

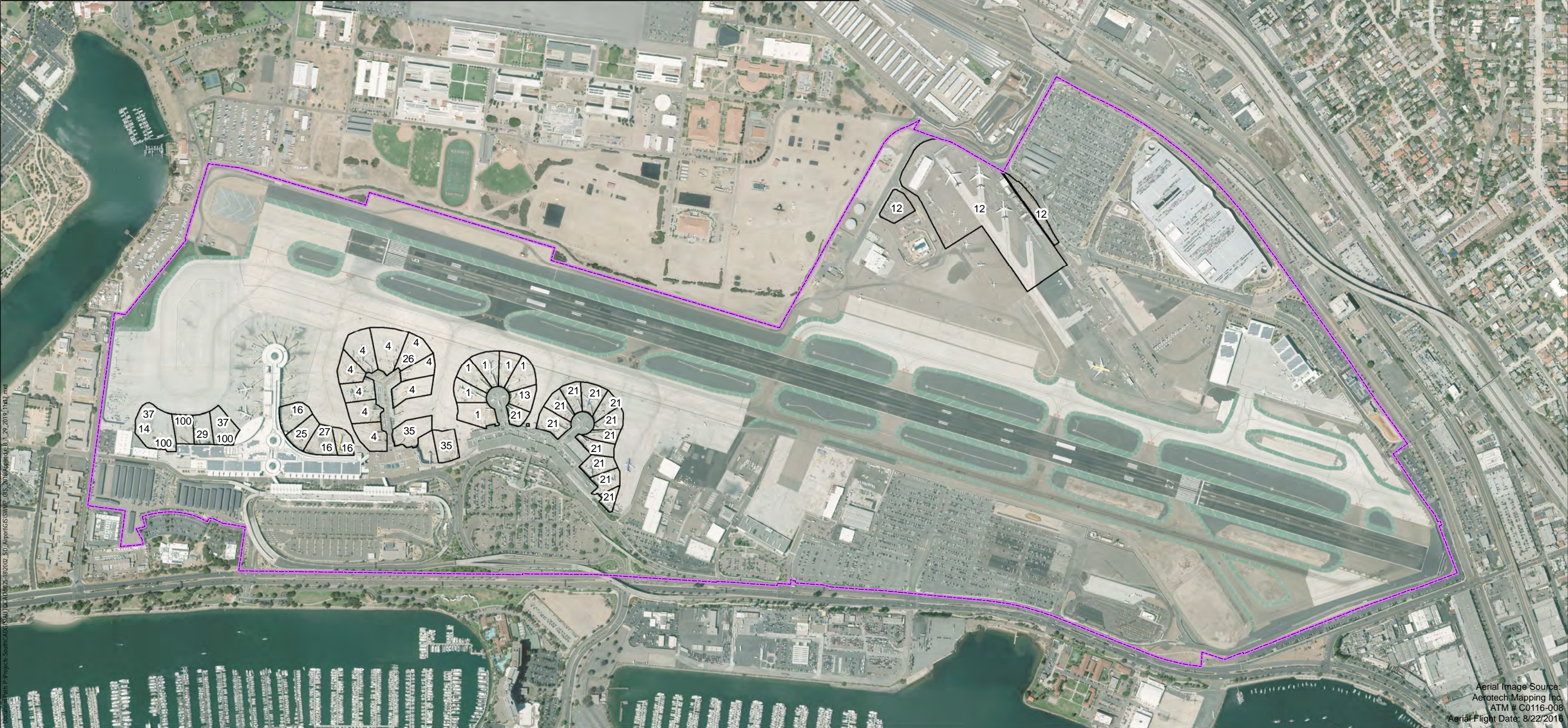
Intentionally Left Blank



### Tenants Implementing SC-14 BMP: Potable Water System Flushing

1 - Alaska	12 - FedEx	14 - Hawaiian	21 - Southwest	27 - Air Canada	35 - Spirit	100 - Edelweiss
4 - American	13 - Frontier	16 - JetBlue	26 - Allegiant	29 - West Jet	37 - British Airways	

SDIA Boundary



Aerial Image Source:  
Aerotek Mapping Inc.  
ATM # C0116-008  
Aerial Flight Date: 8/22/2016



Individual BMP From:

**Appendix B – Best Management Practices**

Intentionally Left Blank