

Tenant Summary Sheet

Tenant:

US Airways

SIC Code: 4512, 4522

Primary Activity: Passenger Carrier

Drainage Area: 12

Nearest MS4 inlet: 200-1000 feet

Contact: Shawn Carroll, Maintenance Supervisor

E: shawn.carroll@usairways.com, P: 619-295-3047, C: 619-559-0276, F: 619-295-3143

Secondary Contact: Lynn Silva, Station Manager

E: lynn.silva@usairways.com, P: 619-222-9001

Address: 3835 North Harbor Drive # 128, San Diego, CA 92101

Tenant Description and Primary Industrial Activities:

1. US Airways operates at Gates 33, 34, 37 and occasionally 21.
2. Maintenance of GSE is done at US Airways shop. Vehicle painting is done indoors with a paint roller. GAT, a subtenant to US Airways, also performs maintenance to the US Airways shop.
3. Maintenance of airplanes occurs at the gates.
4. New oils and some tires are stored under the breezeway between Gates 33 and 34.
5. One flammable material storage locker inside the maintenance department by Gate 36 contains small amount of paint, oil, lubricant, cleaning solutions.
6. US Airways contracts Jetstream, a subtenant of United Airlines, to handle cargo.
7. A spill cart is located by Gate 33. It contains absorbent towels, litter, brooms, and dust pans. A spill cart is also located by Gate 21.
8. There are two hazardous waste and waste oil accumulation areas; one is inside the maintenance shop, the other is under the breezeway between gates 33 and 34.
9. Ocean Blue collects and recycles hazardous wastes and waste oil once every 2 - 3 months.
10. ASIG fuels vehicles and airplanes.
11. DAL Global cleans interior of planes.
12. GES provides maintenance to equipment.
13. Tenant uses the Airport Storm Water Management Plan and has a Hazardous Materials Business Plan.

Significant Materials Potentially Exposed to Storm Water:

Potential Pollutant Sources

Aircraft fueling
Aircraft maintenance
Aircraft sanitary services
Cargo handling
Chemical storage
Equipment fueling
Equipment maintenance
Equipment storage
Fluid leaks from aircraft
Fuel spills
Outdoor waste storage
Vehicle fueling
Vehicle maintenance
Vehicle parking

Potential Pollutants

Battery Acid, Oil and Grease, Lubricants,
Trash, Fuel, Cleaning Solutions, Hydraulic fluids,
Lavatory Truck Wash Water, Lavatory wastes,
Lavatory chemicals, Antifreeze, Trash,

Best Management Practices and Current Structural Controls:

The list below identifies the BMP categories and specific BMPs that are applicable to US Airways. Appendix B provides a description of each BMP category.

Tenant Summary Sheet

Tenant:

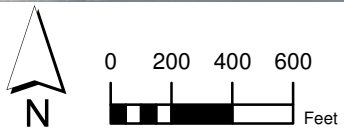
US Airways

<u>Applicable BMP Categories</u>	<u>BMP Number</u>
Non-Storm Water Management	SC01 - 1, 2, 4
Outdoor Equipment Ops and Maintenance Areas	SC02A - 2, 1
Aircraft, Ground Vehicle and Equipment Maintenance	SC02B - 10, 3, 5, 6, 7, 1, 11, 12, 13, 2, 4, 8, 9
Aircraft, Ground Vehicle and Equipment Fueling	SC03 - 1, 2, 4, 5, 6, 8
Aircraft, Ground Vehicle and Equipment Cleaning	SC04 - 1
Outdoor/Indoor Material Storage	SC07 - 1, 11, 12, 2, 3, 7
Waste Handling and Disposal	SC08 - 10, 12, 7, 9, 1, 11, 14, 2, 3, 4, 5, 8
Employee Training	SC10 - 1, 2, 3, 4
Lavatory Service Operation	SC11 - 10, 3, 4, 5, 6, 7, 8, 9
Potable Water System Flushing	SC14 - 1, 2, 3
Housekeeping	SC18 - 1, 2, 4, 3, 5, 6, 7, 8, 9
Safer/Alternative Products	SC19 - 1, 2
Spill Prevention, Control, and Clean-up	SR01 - 6, 1, 2, 3, 5, 7, 8, 9

Structural control measures used at US Airways:

Concrete curbing is used to direct stormwater away from covered storage area.

Portable booms are used during washing to funnel water to collection point where it is removed before entering MS4.



PROJECT NO.:
5013-11-0003

DATE:
November 2011

DRAWN BY:
RMH

CHECKED BY:
AA



US Airways
Operating Areas
San Diego International Airport

FIGURE
E-27