

Tenant Summary Sheet

Tenant:

FlagShip

SIC Code: 4581

Primary Activity: Janitorial/Cleaning Services

Drainage Area: 8, 12

Nearest MS4 inlet: < 200 feet

Contact: Rich Kersulis, Account Manager

E: Rkersulis@flagshipinc.com, P: 619-298-6793, C: 619-778-4306, F: 619-298-2957

Secondary Contact: Joel Pennison, Operations Manager

E: Jpennison@flagshipinc.com, C: 619-778-9929

Address: 3835 North Harbor Drive, # 130
San Diego, CA 92101

Tenant Description and Primary Industrial Activities:

1. FlagShip (formerly SPC) is responsible for cleaning the restrooms inside the airport and those on the airside. They empty all trash cans and recycling cans inside and outside the airport, but not the dumpsters. They clean floors and carpets inside the airport, except for those in gift shops or food courts, and they sweep sidewalks up to the curb on the landside and the airside using an industrial dry vacuum cleaner. They do not clean the baggage make up areas.
2. FlagShip owns two pressure washers. These two washers are used to power-wash the sidewalks on the landside and the airside. The power washers are stored in the cage area between gates 26 and 28. One washer is used 4 nights every week and the other is used 3 nights every week. During power washing, water is heated to 200 degrees, which probably cools to 140-150 degrees by the time it reaches the surfaces, and at a pressure of 3,000 psi. The wash water is vacuumed up by a separate vacuum machine. Water booms are used during this operation to avoid discharges to the storm drains. Wash water is dumped to the dewatering bin at the trash compactor area.
3. FlagShip also power-washes the trash compactor area near the Commuter Terminal, the dumpster area between Terminal 2 East and West, the HMS Host grease container area near Gate 27, the dumpster area at Terminal 1, and the grease container behind Chillis. All pressure-washing is performed between the hours of 11pm to 4am. Carpet cleaning wastewater is also disposed of at the dewatering bin at the trash compactor area.
4. FlagShip also transports and unloads trash/recycling from trash cart system located between Terminal 1 and Terminal 2.
5. Diesel is used to heat water on the power washers; gasoline is used in the engine of the power washers.
6. FlagShip contracts SoCal to clean windows at T2W every 3 to 6 months using FlagShip equipment. All wash waters are collected and disposed of offsite by SoCal.
7. Flagship uses battery operated pieces of equipment (vacuum, carpet cleaners, hard floor surface cleaners).
8. Track mounter carpter extractor is used to clean carpets in terminals and is stored at Gate 17. All water is disposed of in T1 sump (via trash compactors).
9. Tenant uses the Airport Storm Water Management Plan and no longer possesses a Hazardous Materials Business Plan.

Significant Materials Potentially Exposed to Storm Water:

Potential Pollutant Sources

Chemical storage
Equipment fueling
Equipment storage
Fuel spills
Fuel storage
Outdoor washdown
Trash collection
Vehicle fueling
Vehicle parking

Potential Pollutants

Oil and Grease, Fuel, Dumpster wastes
(Non recycables and recycables), Trash,
Cleaning Solutions, Hazardous Medical Material
(Needles, Vomit), Lubricants, Floatables

Tenant Summary Sheet

Tenant:

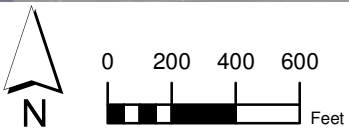
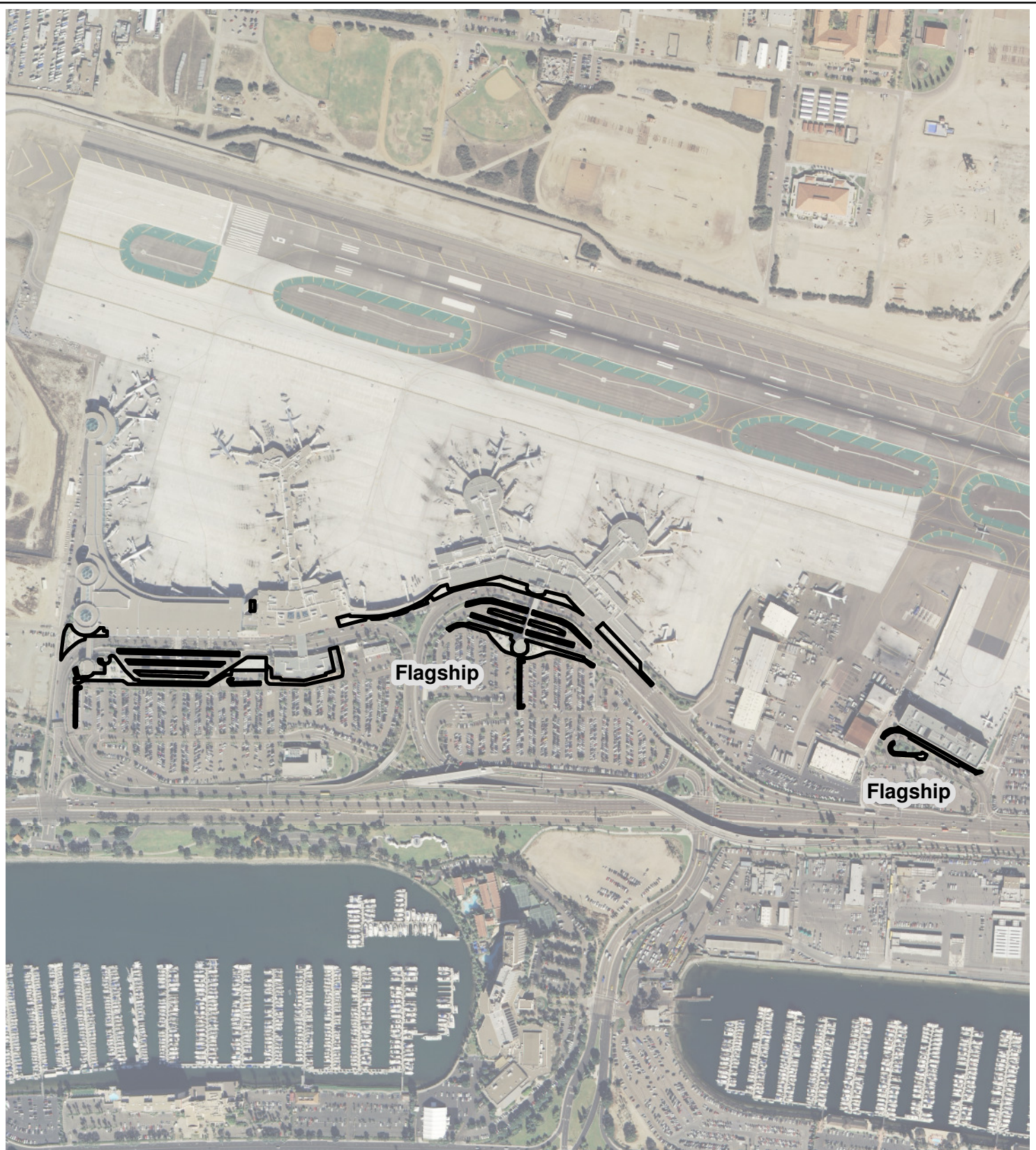
FlagShip

Best Management Practices and Current Structural Controls:

The list below identifies the BMP categories and specific BMPs that are applicable to FlagShip. Appendix B provides a description of each BMP category.

<u>Applicable BMP Categories</u>	<u>BMP Number</u>
Non-Storm Water Management	SC01 - 1, 2, 4
Outdoor Equipment Ops and Maintenance Areas	SC02A - 1, 2
Aircraft, Ground Vehicle and Equipment Maintenance	SC02B - 1, 10, 11, 12, 13, 4, 5, 6
Aircraft, Ground Vehicle and Equipment Fueling	SC03 - 2, 1, 11, 4, 5, 6, 8
Aircraft, Ground Vehicle and Equipment Cleaning	SC04 - 4, 1, 2, 3, 5, 6, 7, 8
Outdoor/Indoor Material Storage	SC07 - 12, 1, 2, 3, 7
Waste Handling and Disposal	SC08 - 4, 1, 10, 11, 12, 13, 2, 3, 5, 7, 8, 9
Employee Training	SC10 - 1, 2, 3, 4
Outdoor Washdown/Sweeping (Apron Washing, Ramp Scrubbing)	SC12 - 5, 1, 3, 6, 7, 8, 9
Housekeeping	SC18 - 1, 2, 3, 4, 5, 6, 7, 8, 9
Safer/Alternative Products	SC19 - 1, 2
Spill Prevention, Control, and Clean-up	SR01 - 2, 6, 1, 10, 3, 4, 5, 7, 8, 9

Structural control measures used at FlagShip:



PROJECT NO.:	5013-11-0003
DATE:	November 2011
DRAWN BY:	RMH
CHECKED BY:	AA

MACTEC Engineering and Consulting, Inc.

**Flagship
Operating Areas**
San Diego International Airport

FIGURE
E-14