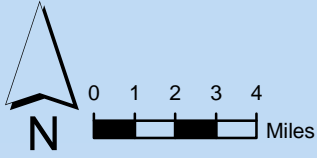
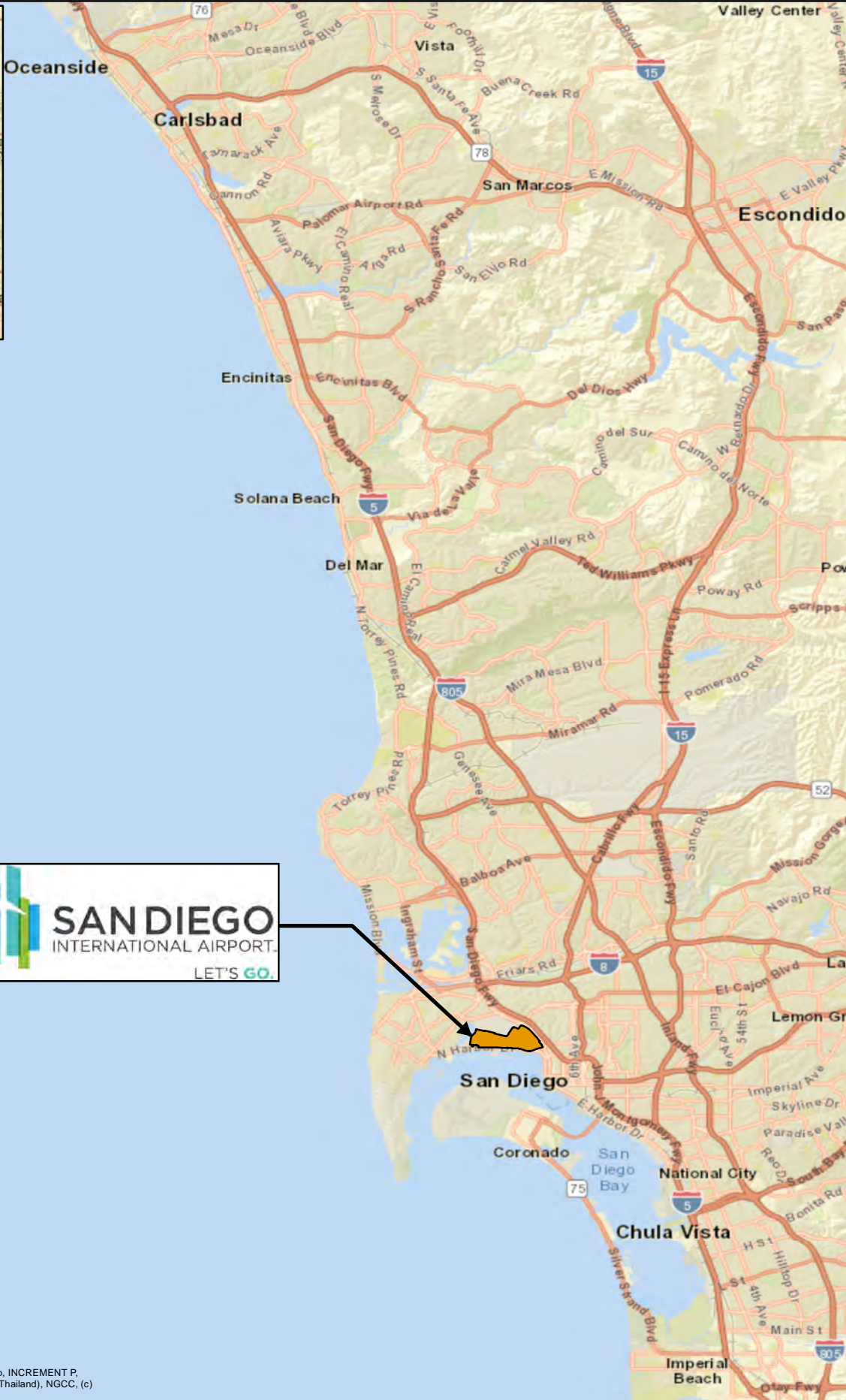


FIGURES

FIGURES

Intentionally Left Blank

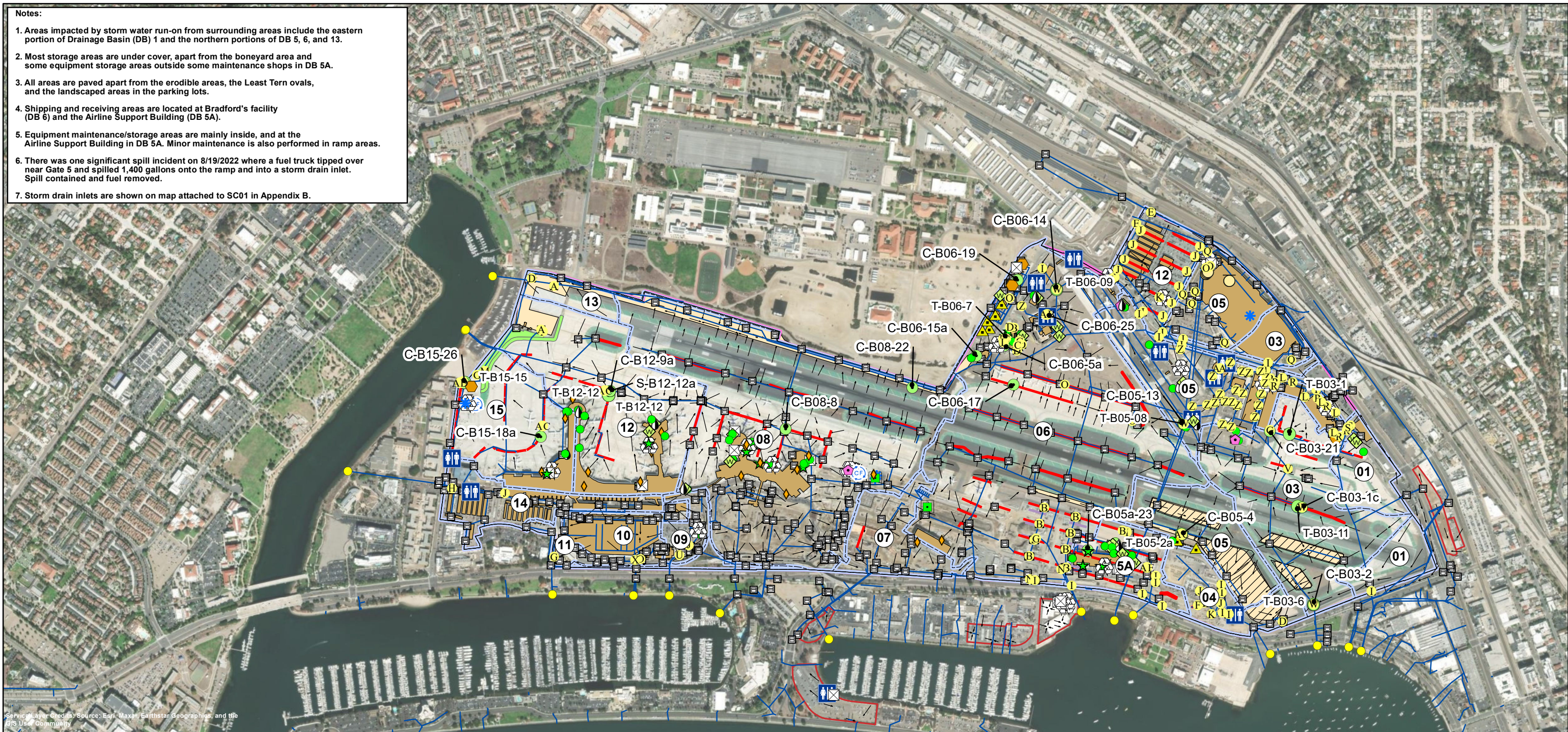


Service Layer Credits: Sources: Esri, HERE, Garmin, USGS, Intermap, INCREMENT P, NRCan, Esri Japan, METI, Esri China (Hong Kong), Esri Korea, Esri (Thailand), NGCC, (c) OpenStreetMap contributors, and the GIS User Community





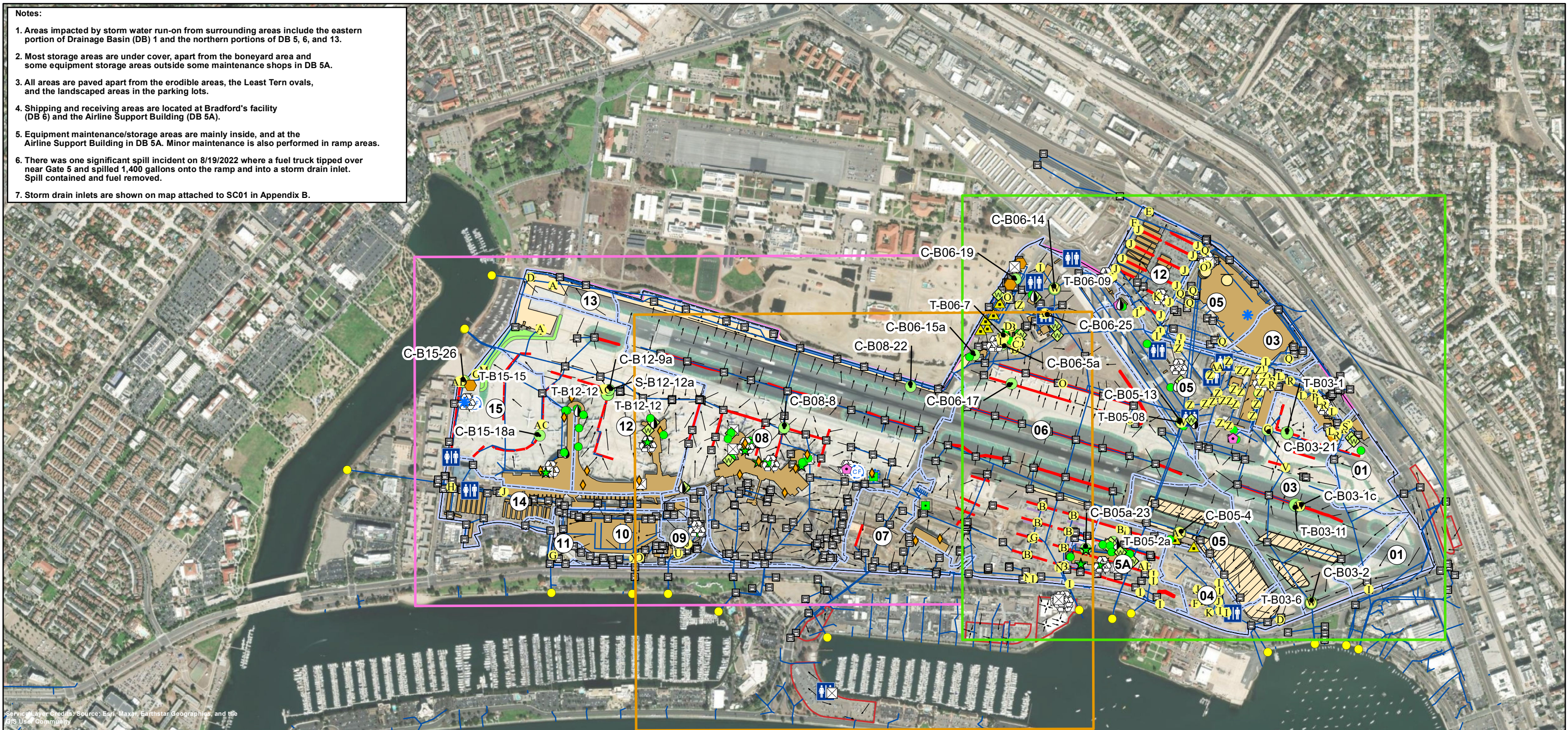
- Notes:**
1. Areas impacted by storm water run-on from surrounding areas include the eastern portion of Drainage Basin (DB) 1 and the northern portions of DB 5, 6, and 13.
 2. Most storage areas are under cover, apart from the boneyard area and some equipment storage areas outside some maintenance shops in DB 5A.
 3. All areas are paved apart from the erodible areas, the Least Tern ovals, and the landscaped areas in the parking lots.
 4. Shipping and receiving areas are located at Bradford's facility (DB 6) and the Airline Support Building (DB 5A).
 5. Equipment maintenance/storage areas are mainly inside, and at the Airline Support Building in DB 5A. Minor maintenance is also performed in ramp areas.
 6. There was one significant spill incident on 8/19/2022 where a fuel truck tipped over near Gate 5 and spilled 1,400 gallons onto the ramp and into a storm drain inlet. Spill contained and fuel removed.
 7. Storm drain inlets are shown on map attached to SC01 in Appendix B.



Sample Locations	Aircraft Lavatory Disposal	Grease Trap	Oil Storage	Artificial Turf	Inlet Filter	ClearWater Solutions BMP Unit	Bioretention Basin	Revel Environmental Manufacturing (REM) Inlet Filter
Inlet	Composting	Industrial Waste	Portable Toilet	Erodible Area	Permeable Surface	BioClean Modular Wetland System	Subsurface Infiltration Basin below Permeable Surface	Cistern
Outfall	Dumpster	Loading	Recycling	Least Tern Nesting Area	OldCastle FloGuard Trench Drain Filter	Detention Basin	Cleanway Curb Inlet Box	HFF Oil Stop Valve
Stormwater Pipe	Fuel Storage	Material Storage	Underground Storage Tank	Pervious Pavement	Bio Clean Grate Inlet Skimmer Box	Bioswale	OldCastle/Kristar Perfilter Unit	Activated Alumina Filter Bags
Trench Drain	Fueling	Metal Storage	Wash Area	Building/Other Roofed Structures	Bio Clean Curb Inlet Skimmer Box	Artificial Turf Infiltration	Contech Jellyfish Unit	Containment Basin
Direction of Surface Flow				Drainage Basin and Number	Infiltration Trench	AquaShield HDS	CleanWay MetalZorb	Underground Infiltration Basin
Permeable Strip				Airport Boundary	Contech StormFilter	Highland Tank Oil Water Separator	BioClean Water Polisher	
				Off-Airport Leased Parcels	Contech CDS	Pervious Gravel		

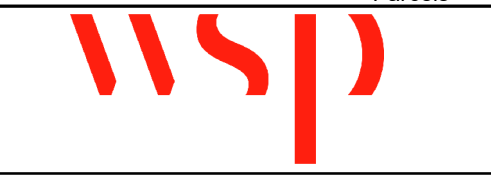
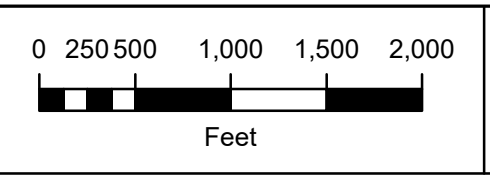
PROJECT NO.: 5025-22-2002 DATE: SEPTEMBER 2023 DRAWN BY: PM CHECKED BY: AA/NP				SAN DIEGO INTERNATIONAL AIRPORT San Diego, California	STORM WATER MANAGEMENT PLAN AT SAN DIEGO INTERNATIONAL AIRPORT	FIGURE 3
--	--	--	--	---	---	--------------------

- Notes:**
1. Areas impacted by storm water run-on from surrounding areas include the eastern portion of Drainage Basin (DB) 1 and the northern portions of DB 5, 6, and 13.
 2. Most storage areas are under cover, apart from the boneyard area and some equipment storage areas outside some maintenance shops in DB 5A.
 3. All areas are paved apart from the erodible areas, the Least Tern ovals, and the landscaped areas in the parking lots.
 4. Shipping and receiving areas are located at Bradford's facility (DB 6) and the Airline Support Building (DB 5A).
 5. Equipment maintenance/storage areas are mainly inside, and at the Airline Support Building in DB 5A. Minor maintenance is also performed in ramp areas.
 6. There was one significant spill incident on 8/19/2022 where a fuel truck tipped over near Gate 5 and spilled 1,400 gallons onto the ramp and into a storm drain inlet. Spill contained and fuel removed.
 7. Storm drain inlets are shown on map attached to SC01 in Appendix B.



Sample Locations	Aircraft Lavatory Disposal	Grease Trap	Oil Storage	Artificial Turf	Inlet Filter	ClearWater Solutions BMP Unit	Bioretention Basin	Revel Environmental Manufacturing (REM) Inlet Filter
Inlet	Composting	Industrial Waste	Portable Toilet	Erodible Area	Permeable Surface	BioClean Modular Wetland System	Subsurface Infiltration Basin below Permeable Surface	Cistern
Outfall	Dumpster	Loading	Recycling	Least Tern Nesting Area	OldCastle FloGuard Trench Drain Filter	Detention Basin	Cleanway Curb Inlet Box	HFF Oil Stop Valve
Stormwater Pipe	Fuel Storage	Material Storage	Underground Storage Tank	Pervious Pavement	Bio Clean Grate Inlet Skimmer Box	Bioswale	OldCastle/Kristar Perfilter Unit	Activated Alumina Filter Bags
Trench Drain	Fueling	Metal Storage	Wash Area	Building/Other Roofed Structures	Bio Clean Curb Inlet Skimmer Box	Artificial Turf Infiltration	Contech Jellyfish Unit	Containment Basin
Direction of Surface Flow				Drainage Basin and Number	Infiltration Trench	AquaShield HDS	CleanWay MetalZorb	Underground Infiltration Basin
Permeable Strip				Airport Boundary	Contech StormFilter	Highland Tank Oil Water Separator	BioClean Water Polisher	
				Off-Airport Leased Parcels	Contech CDS	Pervious Gravel		

PROJECT NO.: 5025-22-2002
 DATE: SEPTEMBER 2023
 DRAWN BY: PM
 CHECKED BY: AA/NP



SAN DIEGO INTERNATIONAL AIRPORT
 San Diego, California

STORM WATER MANAGEMENT PLAN
 AT SAN DIEGO INTERNATIONAL AIRPORT

FIGURE
4

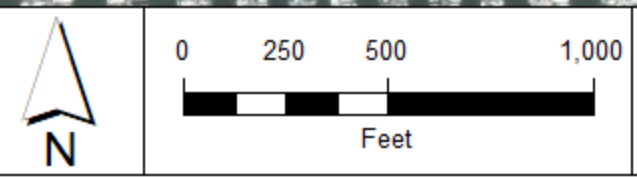


Legend

■ Inlet	— Stormwater Pipe
● Outfall	— Trench Drain
	— Direction of Surface Flow
	— Permeable Strip
■ Aircraft Lavatory Disposal	● Material Storage
■ Composting	● Metal Storage
■ Dumpster	● Oil Storage
▲ Fuel Storage	■ Portable Toilet
● Fueling	■ Recycling
◆ Grease Trap	○ Underground Storage Tank
◆ Industrial Waste	★ Wash Area
★ Loading	
■ Artificial Turf	■ Building/Other Roofed Structures
■ Erodeble Area	① Drainage Basin and Number
■ Least Tern Nesting Area	■ Airport Boundary
■ Pervious Pavement	■ Off-Airport Leased Parcels
A Inlet Filter	Q Bioretention Basin
B Permeable Surface	R Subsurface Infiltration Basin below Permeable Surface
C OldCastle FloGuard Trench Drain Filter	S Cleanway Curb Inlet Box
D Bio Clean Grate Inlet Skimmer Box	U OldCastle/Kristar Perfilter Unit
E Bio Clean Curb Inlet Skimmer Box	V Contech Jellyfish Unit
F Infiltration Trench	W CleanWay MetaZorb
G Contech StormFilter	X BioClean Water Polisher
H Contech CDS	Y Revel Environmental Manufacturing (REM) Inlet Filter
I ClearWater Solutions BMP Unit	AA Cistern
J BioClean Modular Wetland System	AB HFF Oil Stop Valve
K Detention Basin	AC Activated Alumina Filter Bags
L Bioswale	AD Containment Basin
M Artificial Turf Infiltration	AE Underground Infiltration Basin
N AquaShield HDS	
O Highland Tank Oil Water Separator	
P Pervious Gravel	

Service Layer Credits: Source: Esri, Maxar, Earthstar, GeoEye, and GIS User Community

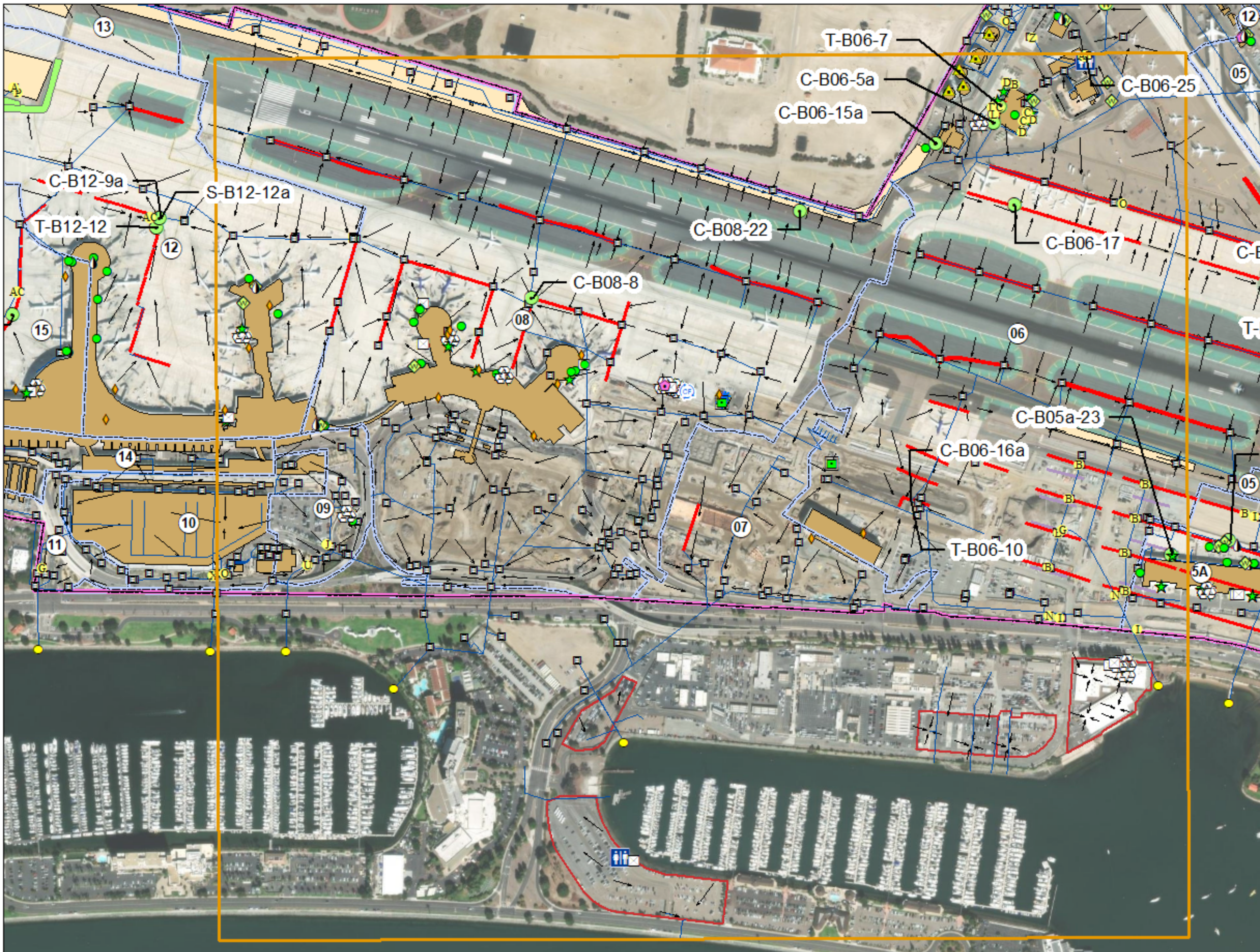
PROJECT NO.: 5025-22-2002
 DATE: SEPTEMBER 2023
 DRAWN BY: PM
 CHECKED BY: AA/NP



SAN DIEGO INTERNATIONAL AIRPORT
 San Diego, California

STORM WATER MANAGEMENT PLAN
 AT SAN DIEGO INTERNATIONAL AIRPORT

FIGURE
5

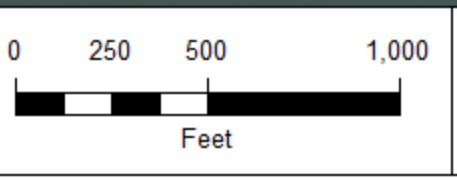


Legend

■ Inlet	— Stormwater Pipe
● Outfall	— Trench Drain
	— Direction of Surface Flow
	— Permeable Strip
■ Aircraft Lavatory Disposal	● Material Storage
■ Composting	● Metal Storage
■ Dumpster	● Oil Storage
▲ Fuel Storage	■ Portable Toilet
● Fueling	■ Recycling
◆ Grease Trap	○ Underground Storage Tank
◆ Industrial Waste	★ Wash Area
★ Loading	
■ Artificial Turf	■ Building/Other Roofed Structures
■ Erodeable Area	■ Drainage Basin and Number
■ Least Tern Nesting Area	■ Airport Boundary
■ Pervious Pavement	■ Off-Airport Leased Parcels
A Inlet Filter	Q Bioretention Basin
B Permeable Surface	R Subsurface Infiltration Basin below Permeable Surface
C OldCastle FloGuard Trench Drain Filter	S Cleanway Curb Inlet Box
D Bio Clean Grate Inlet Skimmer Box	U OldCastle/Kristar Perfilter Unit
E Bio Clean Curb Inlet Skimmer Box	V Contech Jellyfish Unit
F Infiltration Trench	W CleanWay MetaZorb
G Contech StormFilter	X BioClean Water Polisher
H Contech CDS	Y Revel Environmental Manufacturing (REM) Inlet Filter
I ClearWater Solutions BMP Unit	AA Cistern
J BioClean Modular Wetland System	AB HFF Oil Stop Valve
K Detention Basin	AC Activated Alumina Filter Bags
L Bioswale	AD Containment Basin
M Artificial Turf Infiltration	AE Underground Infiltration Basin
N AquaShield HDS	
O Highland Tank Oil Water Separator	
P Pervious Gravel	

Service Layer Credits: Source: Esri, Maxar, Earthstar Geographics, and the GIS User Community

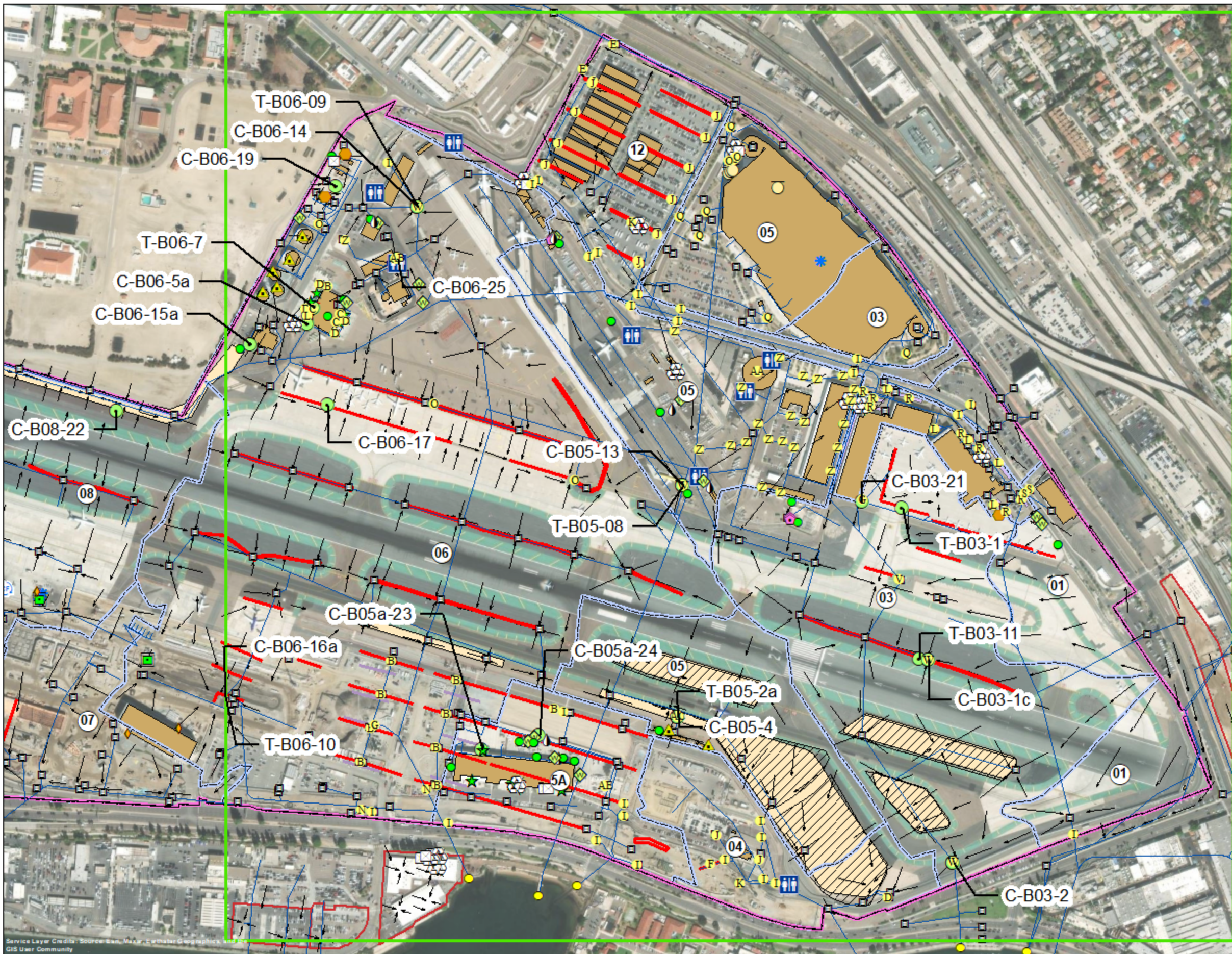
PROJECT NO.: 5025-22-2002
 DATE: SEPTEMBER 2023
 DRAWN BY: PM
 CHECKED BY: AA/NP



SAN DIEGO INTERNATIONAL AIRPORT
 San Diego, California

STORM WATER MANAGEMENT PLAN
 AT SAN DIEGO INTERNATIONAL AIRPORT

FIGURE
6



Legend

■ Inlet	— Stormwater Pipe
● Outfall	— Trench Drain
	— Direction of Surface Flow
	— Permeable Strip
■ Aircraft Lavatory Disposal	● Material Storage
♻️ Composting	● Metal Storage
♻️ Dumpster	● Oil Storage
▲ Fuel Storage	♻️ Portable Toilet
● Fueling	♻️ Recycling
◆ Grease Trap	● Underground Storage Tank
◆ Industrial Waste	★ Wash Area
★ Loading	
■ Artificial Turf	■ Building/Other Roofed Structures
■ Erodeable Area	① Drainage Basin and Number
▨ Least Tern Nesting Area	■ Airport Boundary
■ Pervious Pavement	■ Off-Airport Leased Parcels
A Inlet Filter	Q Bioretention Basin
B Permeable Surface	R Subsurface Infiltration Basin below Permeable Surface
C OldCastle FloGuard Trench Drain Filter	S Cleanway Curb Inlet Box
D Bio Clean Grate Inlet Skimmer Box	U OldCastle/Kristar Perfilter Unit
E Bio Clean Curb Inlet Skimmer Box	V Contech Jellyfish Unit
F Infiltration Trench	W CleanWay MetaZorb
G Contech StormFilter	X BioClean Water Polisher
H Contech CDS	Y Revel Environmental Manufacturing (REM) Inlet Filter
I ClearWater Solutions BMP Unit	AA Cistern
J BioClean Modular Wetland System	AB HFF Oil Stop Valve
K Detention Basin	AC Activated Alumina Filter Bags
L Bioswale	AD Containment Basin
M Artificial Turf Infiltration	AE Underground Infiltration Basin
N AquaShield HDS	
O Highland Tank Oil Water Separator	
P Pervious Gravel	