

Appendix B – Best Management Practices

BMP SR01		SPILL PREVENTION, CONTROL, AND CLEAN-UP	
<p>PURPOSE: Prevent or reduce the discharge of pollutants to storm water resulting from spills, leaks and improper cleanup of significant and other materials.</p>		<p>TARGETED ACTIVITIES:</p> <ul style="list-style-type: none"> ➔ Aircraft Deicing/Anti-Icing ➔ Aircraft Lavatory Service ➔ All Fueling ➔ All Maintenance ➔ All Storage ➔ All Washing ➔ Cargo Handling ➔ Equipment Cleaning ➔ Fire Fighting Equip. Testing ➔ Floor Washdowns ➔ Garbage Collection ➔ Outdoor Washdown ➔ Painting/Stripping ➔ Runway Rubber Removal 	
<p>POLLUTION PREVENTION:</p>		<p>POLLUTANTS of CONCERN:</p>	
<p><input type="checkbox"/> Provide formal training in execution of the Spill Plan(s) to key personnel, with additional training for first responder level personnel. All employees should have basic knowledge of spill control procedures and potential dangers of spills on human health and the environment. Incorporate spill control procedures in regular safety meetings to reinforce practices.</p> <p><input type="checkbox"/> Maintain an inventory of appropriate cleanup materials and equipment on-site and strategically deploy cleanup materials and equipment based on the type and quantities of chemicals present.</p>	<p>Implement the following pollution prevention practices and BMPs to prevent spills and leaks of significant and other materials to the storm water collection system:</p>	<ul style="list-style-type: none"> ➔ Aircraft Fire Fighting Foam ➔ Battery Acid ➔ Cleaning Solution ➔ Deicing/Anti-Icing Fluid ➔ Fuel ➔ Heavy Metals ➔ Hydrocarbons ➔ Lavatory Chemicals ➔ Metals ➔ Oil and Grease ➔ Paint ➔ Pesticides/Herbicides/ Fertilizers ➔ Potable Water System Chemicals ➔ Solvents ➔ Vehicle Fluids 	
<p>OPERATIONS:</p>		<p>APPLICABLE TENANTS/ DEPARTMENTS:</p>	
<p>Sub-BMPs</p> <p>- 01 <input type="checkbox"/> Develop, implement, and keep current Spill Plan, and develop facility spill prevention and response procedures.</p> <p>- 02 <input type="checkbox"/> Post a summary of the Spill Plan and spill response procedures, at key locations, identifying the spill cleanup coordinators, location of cleanup equipment, and phone numbers of regulatory agencies to be contacted in the event of a spill.</p> <p>- 03 <input type="checkbox"/> Train relevant employees and contractors in the implementation of the Spill Plan, if applicable, or spill control procedures.</p> <p>- 04 <input type="checkbox"/> Use leak and spill prevention devices.</p>	<p>Develop, implement, and keep current Spill Plan, and develop facility spill prevention and response procedures.</p> <p>Post a summary of the Spill Plan and spill response procedures, at key locations, identifying the spill cleanup coordinators, location of cleanup equipment, and phone numbers of regulatory agencies to be contacted in the event of a spill.</p> <p>Train relevant employees and contractors in the implementation of the Spill Plan, if applicable, or spill control procedures.</p> <p>Use leak and spill prevention devices.</p>	<ul style="list-style-type: none"> ➔ ACE ➔ Air Canada ➔ Alaska ➔ Allegiant ➔ American Airlines ➔ ARFF ➔ Avis ➔ Bradford ➔ British Airways ➔ Cartwright ➔ Conrac 	

Appendix B – Best Management Practices

<p>- 05 <input type="checkbox"/> Place adequate spill kits in appropriate locations.</p> <p>- 06 <input type="checkbox"/> Notify Airport Operations (619-400-2710), the Airport Authority Planning & Environmental Affairs Department (619-400-2784), and any agencies or companies identified in the Spill Plan or facility spill prevention and response procedures in the event of a spill.</p> <p>- 07 <input type="checkbox"/> In the event of a spill or release, immediately follow procedures identified in the Spill Plan or facility spill prevention and response procedures.</p> <p>- 08 <input type="checkbox"/> Use only dry-cleaning methods.</p> <p>- 09 <input type="checkbox"/> Properly dispose of all used spill control and clean-up materials.</p> <p>- 10 <input type="checkbox"/> Waste water from washing activities is captured by vacuum and properly disposed of, or is diverted to a structural treatment control, sanitary sewer, or dead end sump with pump.</p>		<ul style="list-style-type: none"> → Delta → DHL → FedEx → Flagship → Frontier → Hawaiian → HFF → HMS Host → JAL → JetBlue → Lufthansa → Menzies → Menzies Fuel Farm → Mission Yogurt → Port of San Diego → SANCO → SDCRAA → Siemens → Signature → Southwest → SP Plus → Spirit → SSP → Sun Country → United → UPS → WestJet
<p>STRUCTURAL TREATMENT BMPs: Refer to BMP TC01 for information on structural treatment BMPs.</p>		
<p>BMP FREQUENCIES/EQUIPMENT/TOOLS: Spill prevention and control occurs on a daily basis. Clean up is as needed. Equipment/tools to implement BMPs include spill pallets, outdoor sheds, overpack containers, tarps, flammable materials storage lockers, bermed or containment areas, fiber rolls, shop vacuums, spill kits, brooms, and drums.</p>		
<p>AUTHORIZED LOCATIONS TO IMPLEMENT SPILL PREVENTION, CONTROL AND CLEANUP BMPs:</p>		
<p><input type="checkbox"/></p>	<p>Implement BMPs for the prevention of non-storm water discharges from spills, leaks or improper cleanups at the designated areas as shown in the attached map.</p>	
<p>Date:</p>	<p>Version: 2.0</p>	

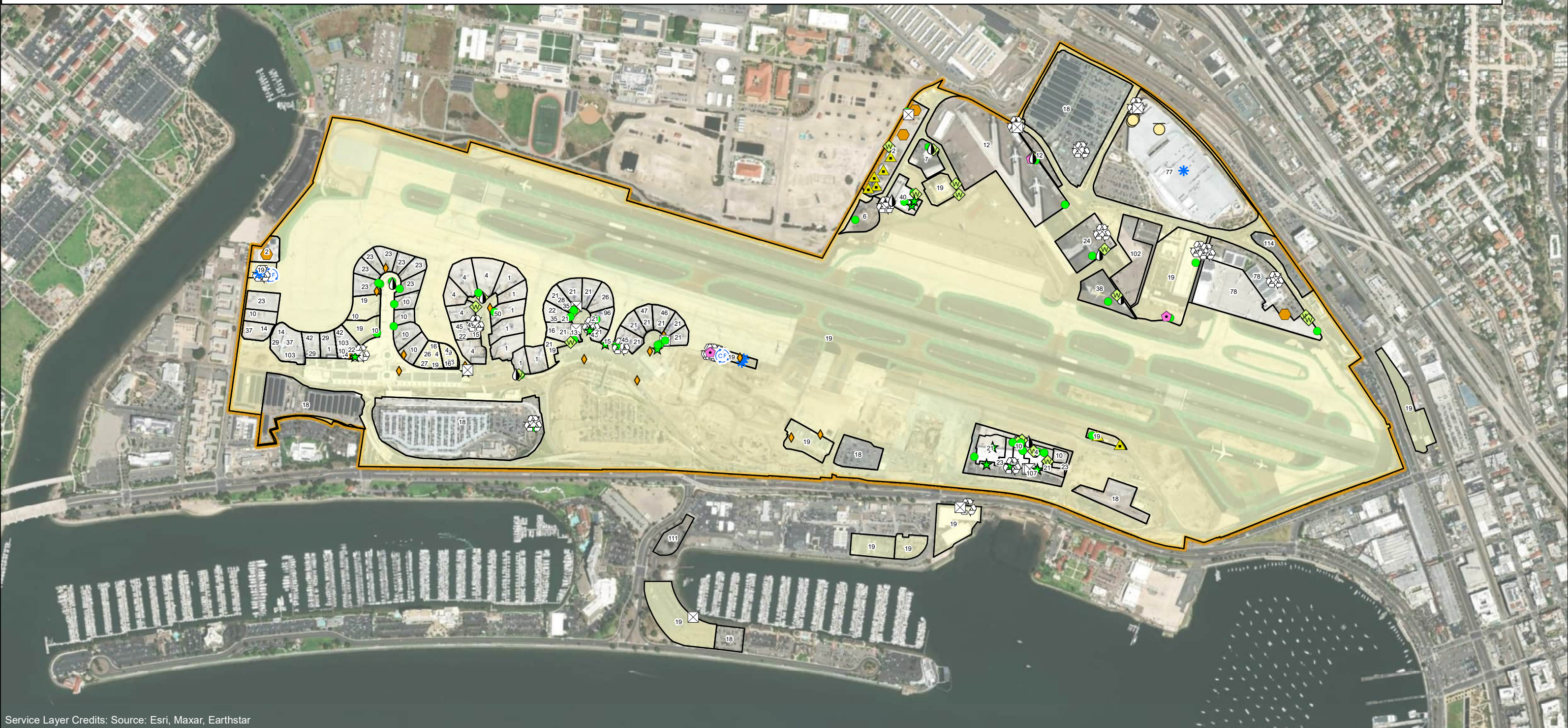
Appendix B - Best Management Practices

Intentionally Left Blank

**Tenants Implementing SR-01 BMP:
Spill Prevention, Control & Clean Up**

- | | | | | | | | | | | | | |
|-----------------------|-------------|---------------|---------------|----------------|----------------|------------------|----------------------|---------------|---------------------|-----------------|-----------------|-------------------------|
| 1 - Alaska | 6 - ARFF | 12 - FedEx | 15 - HMS Host | 19 - SDCRAA | 23 - United | 27 - Air Canada | 35 - Spirit | 40 - Bradford | 46 - HFF | 77 - Conrac | 102 - SP Plus | 111 - AVIS |
| 2 - Menzies Fuel Farm | 7 - Menzies | 13 - Frontier | 16 - JetBlue | 21 - Southwest | 24 - UPS | 28 - Sun Country | 37 - British Airways | 42 - JAL | 47 - Mission Yogurt | 78 - Signature | 103 - Lufthansa | 114 - Port of San Diego |
| 4 - American | 10 - Delta | 14 - Hawaiian | 18 - ACE | 22 - FlagShip | 26 - Allegiant | 29 - West Jet | 38 - DHL | 45 - SSP | 50 - Siemens | 96 - Cartwright | 107 - SANCO | |

- | | | | | | | |
|------------|---------------|------------------|------------------|---------------|--------------------------|-----------|
| Composting | Fuel Storage | Grease Trap | Loading | Metal Storage | Recycling | Wash Area |
| Dumpster | Fueling | Industrial Waste | Material Storage | Oil Storage | Underground Storage Tank | |
| SDCRAA | SDIA Boundary | | | | | |



Service Layer Credits: Source: Esri, Maxar, Earthstar