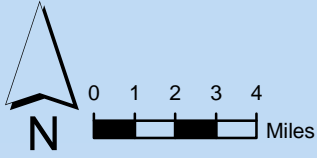
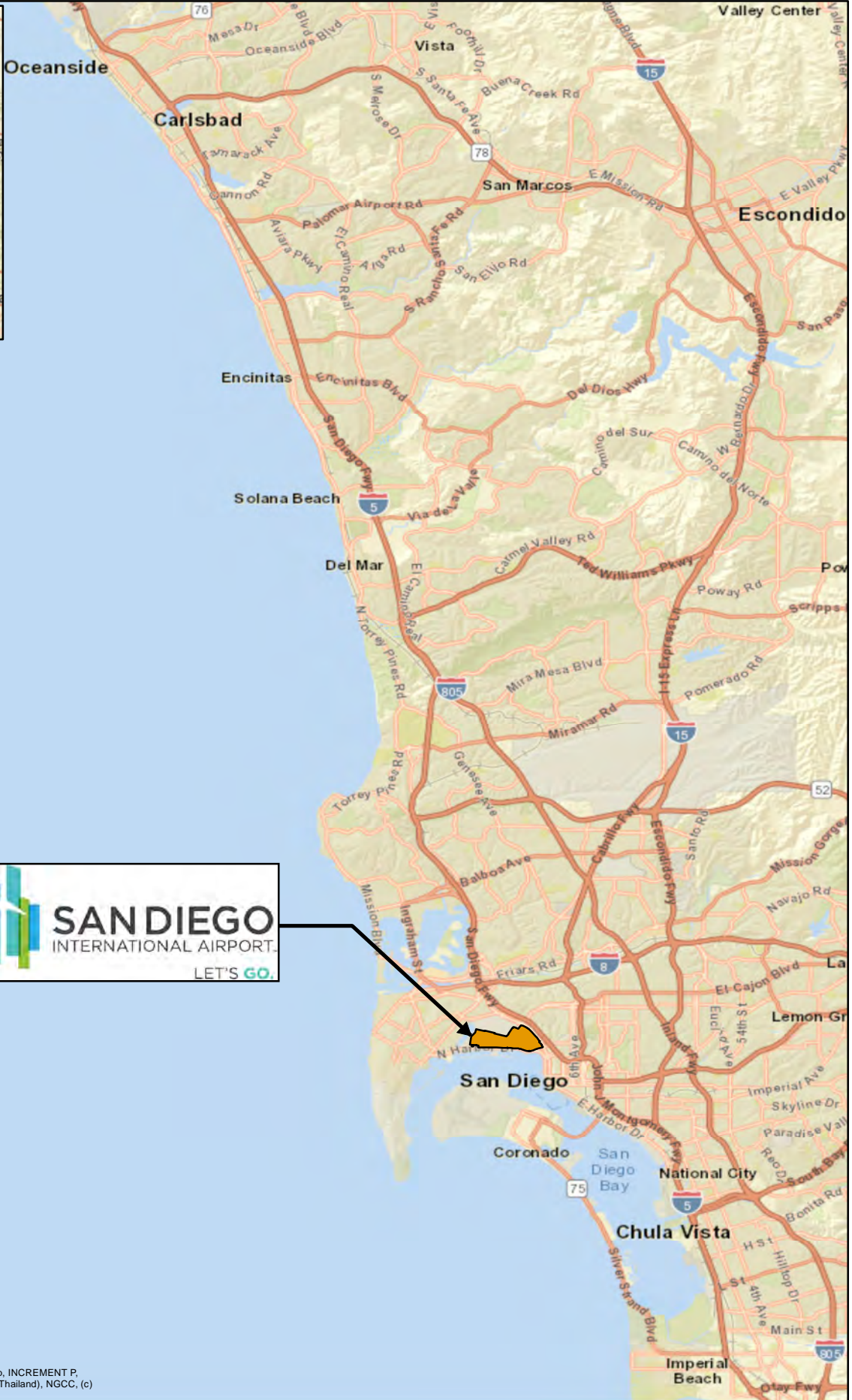


FIGURES

FIGURES

Intentionally Left Blank



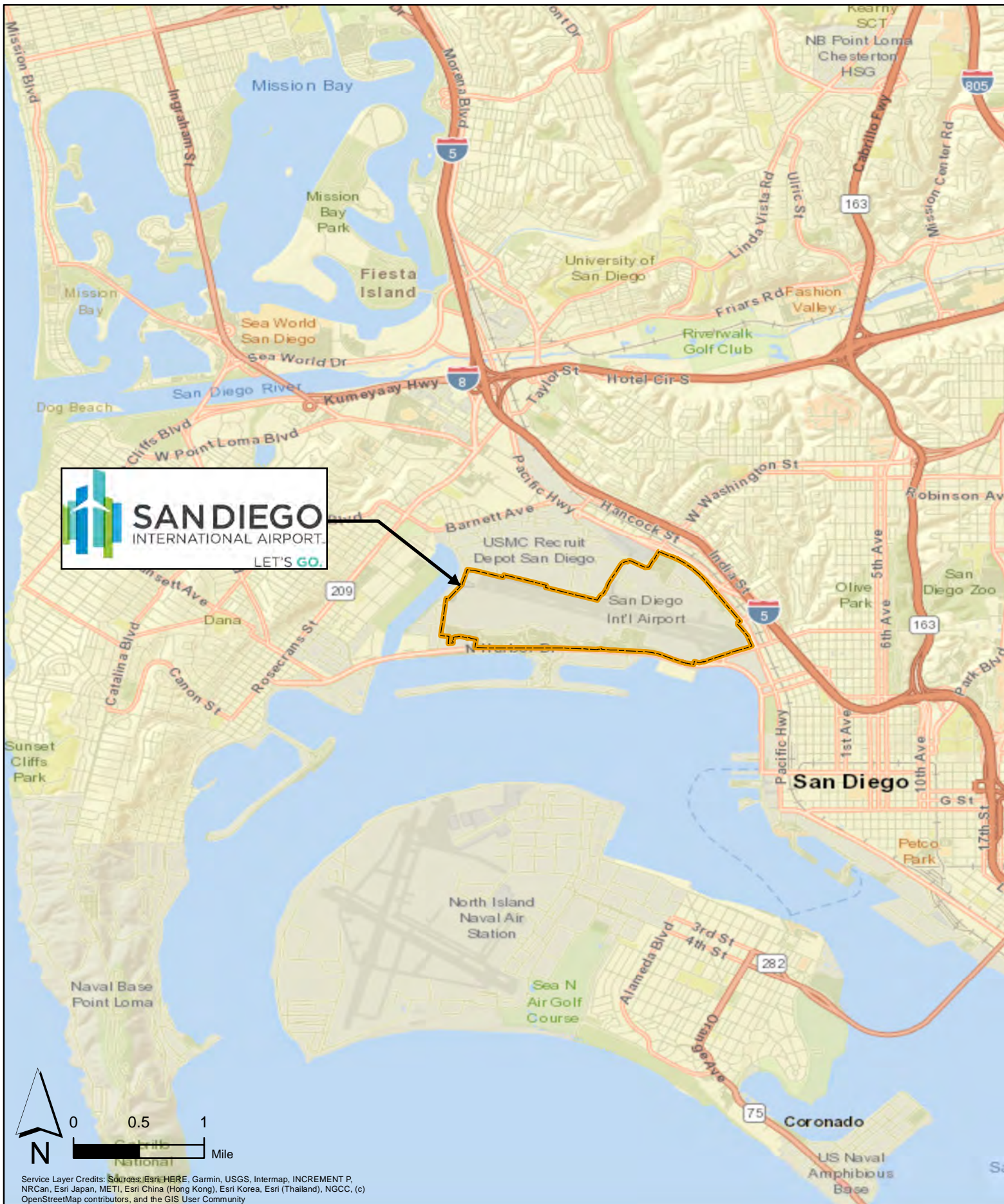
Service Layer Credits: Sources: Esri, HERE, Garmin, USGS, Intermap, INCREMENT P, NRCan, Esri Japan, METI, Esri China (Hong Kong), Esri Korea, Esri (Thailand), NGCC, (c) OpenStreetMap contributors, and the GIS User Community

SAN
Stormwater
Management Plan
January 2022



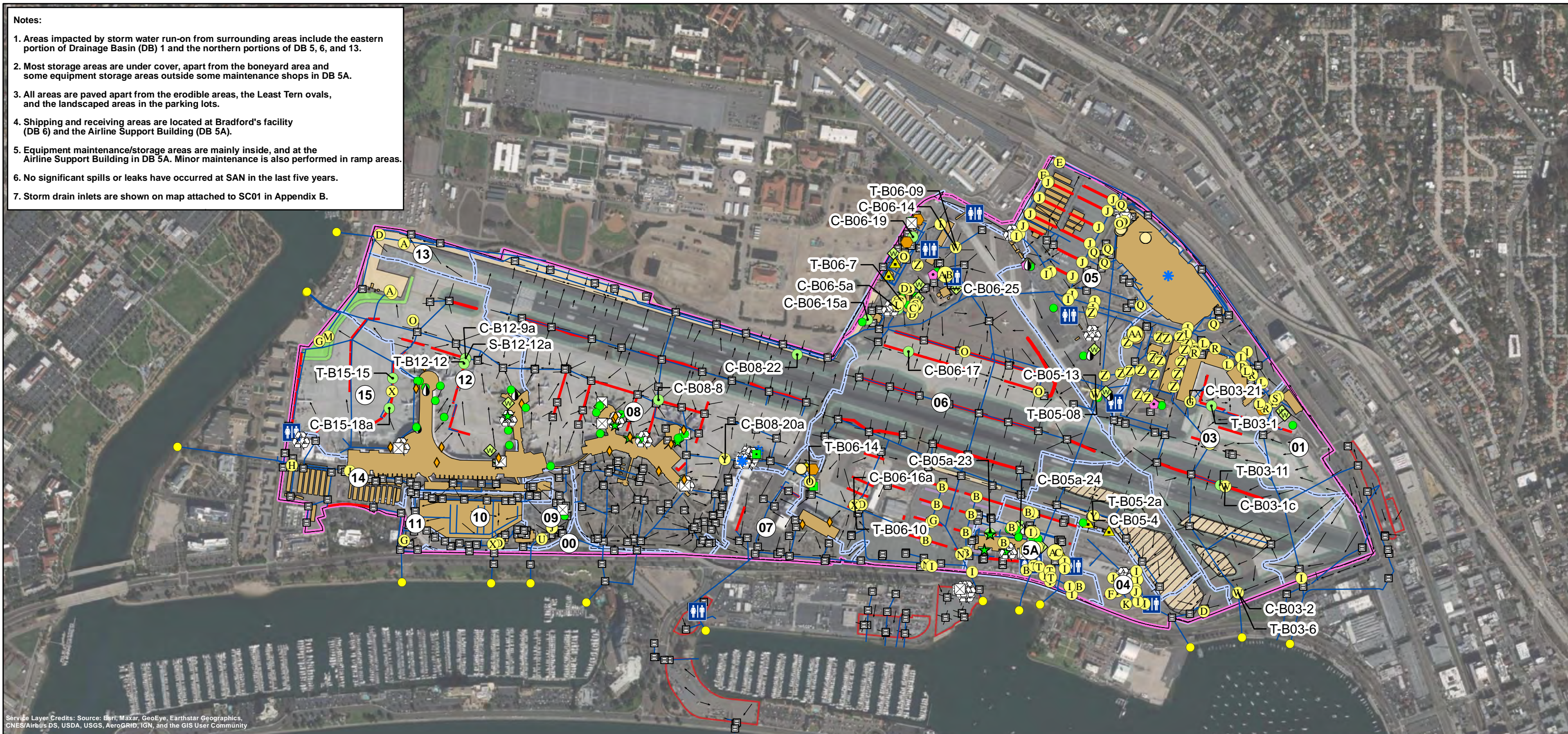
**Regional Location Map
San Diego International Airport**

FIGURE
1



Service Layer Credits: Sources: Esri, HERE, Garmin, USGS, Intermap, INCREMENT P, NRCan, Esri Japan, METI, Esri China (Hong Kong), Esri Korea, Esri (Thailand), NGCC, (c) OpenStreetMap contributors, and the GIS User Community

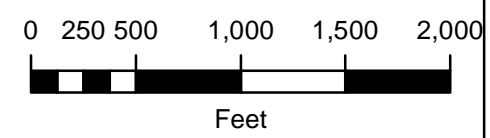
- Notes:**
1. Areas impacted by storm water run-on from surrounding areas include the eastern portion of Drainage Basin (DB) 1 and the northern portions of DB 5, 6, and 13.
 2. Most storage areas are under cover, apart from the boneyard area and some equipment storage areas outside some maintenance shops in DB 5A.
 3. All areas are paved apart from the erodible areas, the Least Tern ovals, and the landscaped areas in the parking lots.
 4. Shipping and receiving areas are located at Bradford's facility (DB 6) and the Airline Support Building (DB 5A).
 5. Equipment maintenance/storage areas are mainly inside, and at the Airline Support Building in DB 5A. Minor maintenance is also performed in ramp areas.
 6. No significant spills or leaks have occurred at SAN in the last five years.
 7. Storm drain inlets are shown on map attached to SC01 in Appendix B.



Service Layer Credits: Source: Esri, Maxar, GeoEye, Earthstar Geographics, CNES/Airbus DS, USDA, USGS, AeroGRID, IGN, and the GIS User Community

Sampling Location	Aircraft Lavatory Disposal	Grease Trap	Oil Storage	Artificial Turf	Inlet Filter	Bio Clean Curb Inlet Skimmer Box	Artificial Turf Infiltration	OldCastle/Kristar Perfilter Unit
Inlet	Composting	Industrial Waste	Portable Toilet	Erodible Area	Cistern	Infiltration Trench	Aquashield HDS	Contech Jellyfish Unit
Outfall	Dumpster	Loading	Recycling	Least Tern Nesting Area	HFF Oil Stop Valve	Contech Storm Filter	Oil Water Separator	CleanWay Metalzorb
Stormwater Pipe	Fuel Storage	Material Storage	Underground Storage Tank	Pervious Pavement	Underground Infiltration Basin	Contech CDS	Pervious Gravel	Bioretention Basin
Trench Drain	Fueling	Metal Storage	Wash Area	Building/Other Roofed Structures	Permeable Surface	ClearWater Solutions BMP Unit	Subsurface Infiltration Basin	Activated Alumina Filter Bags
Direction of Surface Flow				Drainage Basin and Number	Trench Drain Filter	Modular Wetland System	Curb Inlet Box	Biochar Boom
Permeable Strip				Airport Boundary	Bio Clean Grate Inlet Skimmer Box	Detention Basin	Curb Cut with Rock Infiltration Bed	Revel Environmental Manufacturing (REM) Inlet Filter
				Off-Airport Leased Parcels		Bioswale		

PROJECT NO.: 5025-18-2002
 DATE: JANUARY 2022
 DRAWN BY: CAB
 CHECKED BY: AA/NP

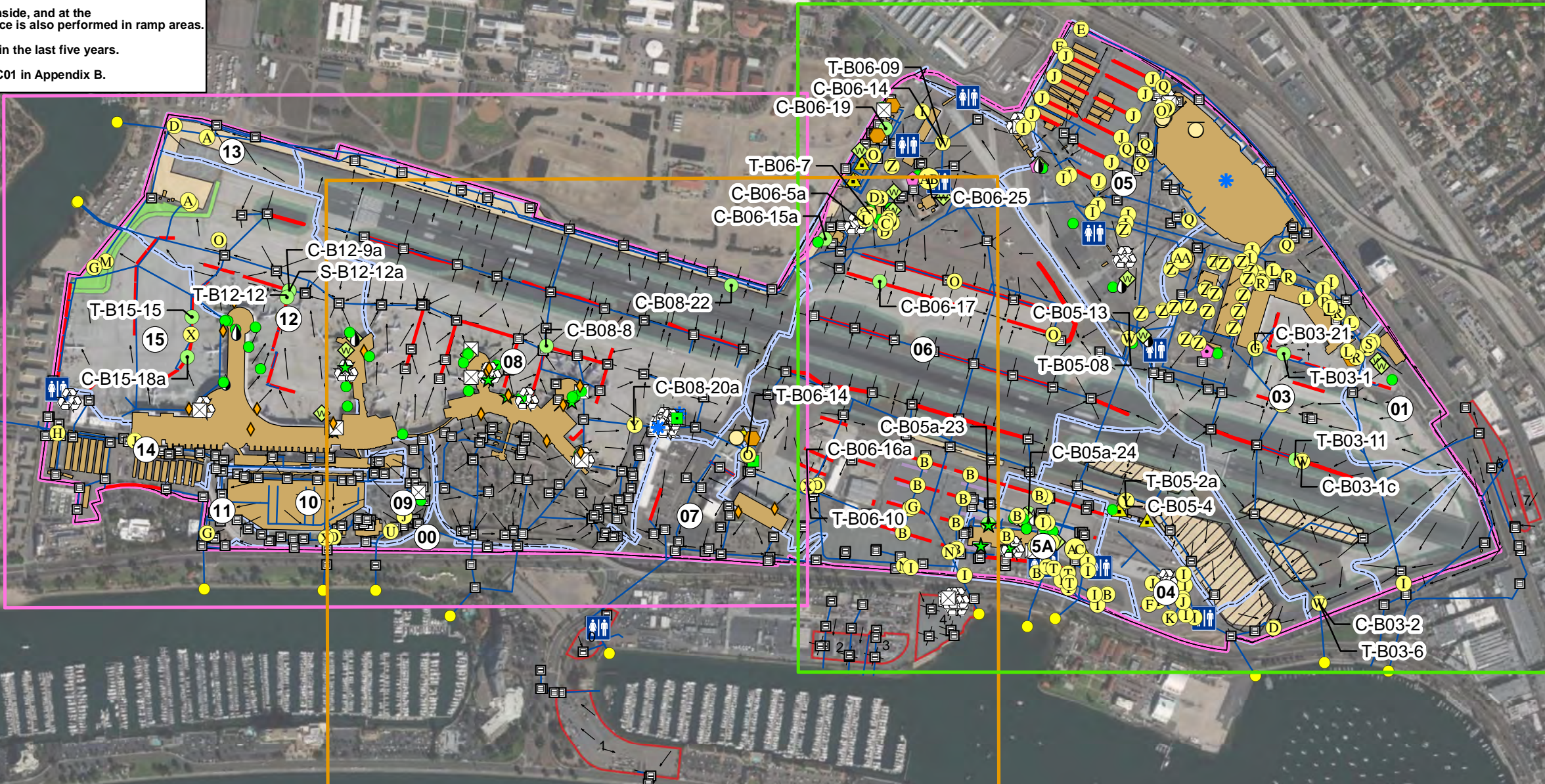


SAN DIEGO INTERNATIONAL AIRPORT
 San Diego, California

STORM WATER MANAGEMENT PLAN
 AT SAN DIEGO INTERNATIONAL AIRPORT

FIGURE
3

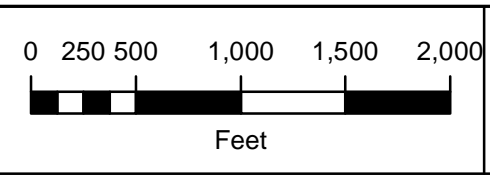
- Notes:**
1. Areas impacted by storm water run-on from surrounding areas include the eastern portion of Drainage Basin (DB) 1 and the northern portions of DB 5, 6, and 13.
 2. Most storage areas are under cover, apart from the boneyard area and some equipment storage areas outside some maintenance shops in DB 5A.
 3. All areas are paved apart from the erodible areas, the Least Tern ovals, and the landscaped areas in the parking lots.
 4. Shipping and receiving areas are located at Bradford's facility (DB 6) and the Airline Support Building (DB 5A).
 5. Equipment maintenance/storage areas are mainly inside, and at the Airline Support Building in DB 5A. Minor maintenance is also performed in ramp areas.
 6. No significant spills or leaks have occurred at SAN in the last five years.
 7. Storm drain inlets are shown on map attached to SC01 in Appendix B.



Service Layer Credits: Source: Esri, Maxar, GeoEye, Earthstar Geographics, CNES/Airbus DS, USDA, USGS, AeroGRID, IGN, and the GIS User Community

Sampling Location	Aircraft Lavatory Disposal	Grease Trap	Oil Storage	Artificial Turf	Inlet Filter	Bio Clean Curb Inlet Skimmer Box	Artificial Turf Infiltration	Figure 5
Inlet	Composting	Industrial Waste	Portable Toilet	Erodible Area	Cistern	Infiltration Trench	Aquashield HDS	Figure 6
Outfall	Dumpster	Loading	Recycling	Least Tern Nesting Area	HFF Oil Stop Valve	Contech Storm Filter	Oil Water Separator	Figure 7
Stormwater Pipe	Fuel Storage	Material Storage	Underground Storage Tank	Pervious Pavement	Underground Infiltration Basin	Contech CDS	Pervious Gravel	Contech Jellyfish Unit
Trench Drain	Fueling	Metal Storage	Wash Area	Building/Other Roofed Structures	Permeable Surface	ClearWater Solutions BMP Unit	Bioretention Basin	CleanWay Metalzorb
Direction of Surface Flow				Drainage Basin and Number	Trench Drain Filter	Modular Wetland System	Subsurface Infiltration Basin	Activated Alumina Filter Bags
Permeable Strip				Airport Boundary	Bio Clean Grate Inlet Skimmer Box	Detention Basin	Curb Inlet Box	Biochar Boom
				Off-Airport Leased Parcels		Bioswale	Curb Cut with Rock Infiltration Bed	Revel Environmental Manufacturing (REM) Inlet Filter

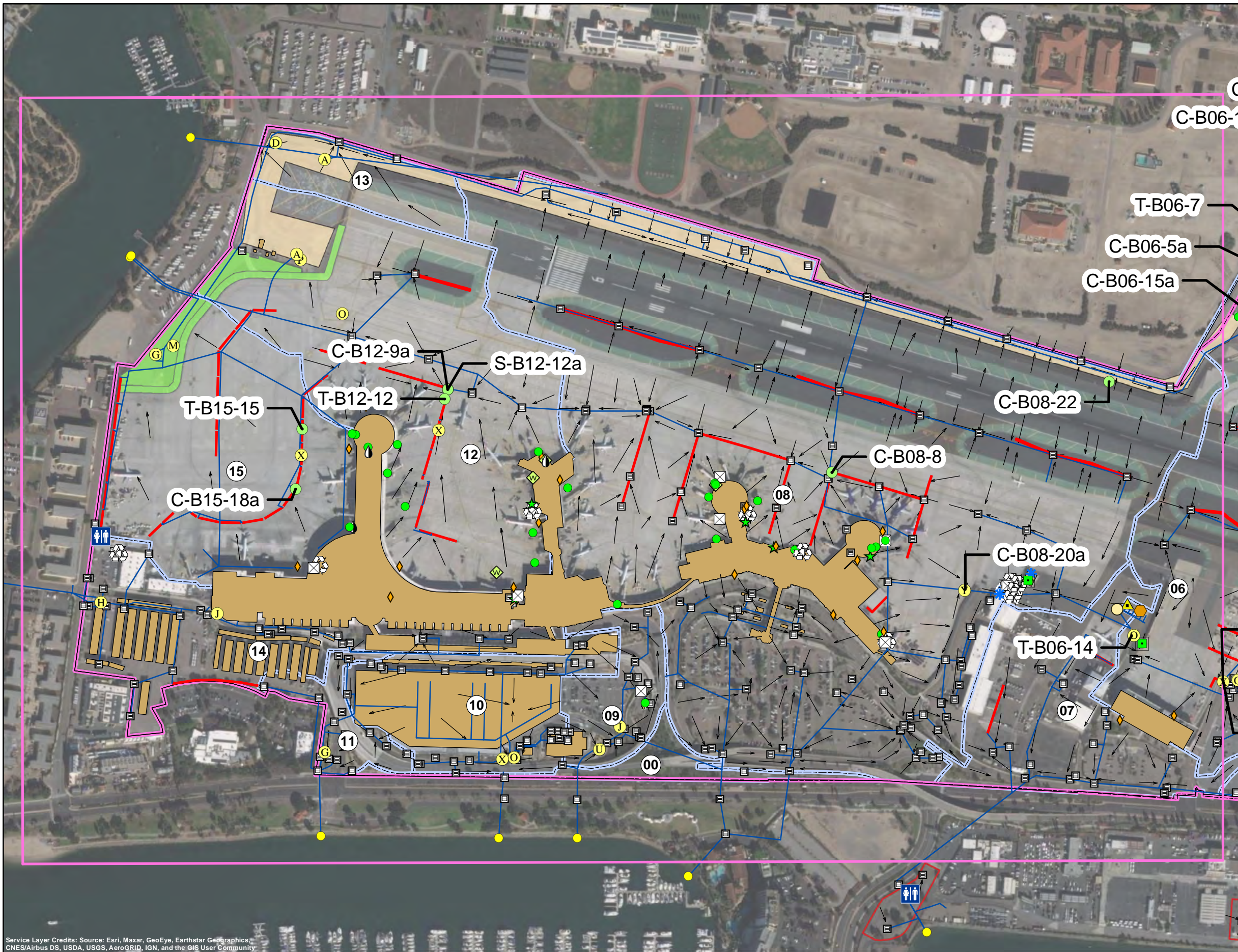
PROJECT NO.: 5025-18-2002
 DATE: JANUARY 2022
 DRAWN BY: CAB
 CHECKED BY: AA/NP



SAN DIEGO INTERNATIONAL AIRPORT
 San Diego, California

STORM WATER MANAGEMENT PLAN
 AT SAN DIEGO INTERNATIONAL AIRPORT

FIGURE
4

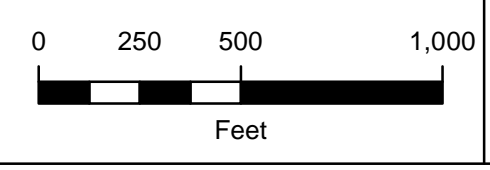


Legend

	Sampling Location		Stormwater Pipe
	Inlet		Trench Drain
	Outfall		Direction of Surface Flow
	Aircraft Lavatory Disposal		Permeable Strip
	Composting		Loading
	Dumpster		Material Storage
	Fuel Storage		Metal Storage
	Fueling		Oil Storage
	Grease Trap		Portable Toilet
	Industrial Waste		Recycling
	Artificial Turf		Underground Storage Tank
	Erodible Area		Wash Area
	Least Tern Nesting Area		Building/Other Roofed Structures
	Pervious Pavement		Drainage Basin and Number
	Inlet Filter		Airport Boundary
	Cistern		Off-Airport Leased Parcels
	HFF Oil Stop Valve		Artificial Turf Infiltration
	Underground Infiltration Basin		Aquashield HDS
	Permeable Surface		Oil Water Separator
	Trench Drain Filter		Pervious Gravel
	Bio Clean Grate Inlet Skimmer Box		Bioretention Basin
	Bio Clean Curb Inlet Skimmer Box		Subsurface Infiltration Basin
	Infiltration Trench		Curb Inlet Box
	Contech Storm Filter		Curb Cut with Rock Infiltration Bed
	Contech CDS		OldCastle/Kristar Perfilter Unit
	ClearWater Solutions BMP Unit		Contech Jellyfish Unit
	Modular Wetland System		CleanWay Metalzorb
	Detention Basin		Activated Alumina Filter Bags
	Bioswale		Biochar Boom
			Revel Environmental Manufacturing (REM) Inlet Filter

Service Layer Credits: Source: Esri, Maxar, GeoEye, Earthstar Geographics, CNES/Airbus DS, USDA, USGS, AeroGRID, IGN, and the GIS User Community

PROJECT NO.: 5025-18-2002
 DATE: JANUARY 2022
 DRAWN BY: CAB
 CHECKED BY: AA/NP



SAN DIEGO INTERNATIONAL AIRPORT
 San Diego, California

STORM WATER MANAGEMENT PLAN
 AT SAN DIEGO INTERNATIONAL AIRPORT

FIGURE
5

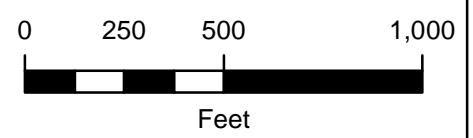


Legend

Sampling Location	Stormwater Pipe
Inlet	Trench Drain
Outfall	Direction of Surface Flow
Aircraft Lavatory Disposal	Permeable Strip
Composting	Loading
Dumpster	Material Storage
Fuel Storage	Metal Storage
Fueling	Oil Storage
Grease Trap	Portable Toilet
Industrial Waste	Recycling
Artificial Turf	Underground Storage Tank
Erovable Area	Wash Area
Least Tern Nesting Area	Building/Other Roofed Structures
Pervious Pavement	Drainage Basin and Number
Inlet Filter	Airport Boundary
Cistern	Off-Airport Leased Parcels
HFF Oil Stop Valve	Artificial Turf Infiltration
Underground Infiltration Basin	Aquashield HDS
Permeable Surface	Oil Water Separator
Trench Drain Filter	Pervious Gravel
Bio Clean Grate Inlet Skimmer Box	Bioretention Basin
Bio Clean Curb Inlet Skimmer Box	Subsurface Infiltration Basin
Infiltration Trench	Curb Inlet Box
Contech Storm Filter	Curb Cut with Rock Infiltration Bed
Contech CDS	OldCastle/Kristar Perfilter Unit
ClearWater Solutions BMP Unit	Contech Jellyfish Unit
Modular Wetland System	CleanWay Metalzorb
Detention Basin	Activated Alumina Filter Bags
Bioswale	Biochar Boom
	Revel Environmental Manufacturing (REM) Inlet Filter

Service Layer Credits: Source: Esri, Maxar, GeoEye, Earthstar Geographics, CNES/Airbus DS, USDA, USGS, AeroGRID, IGN, and the GIS User Community

PROJECT NO.: 5025-18-2002
 DATE: JANUARY 2022
 DRAWN BY: CAB
 CHECKED BY: AA/NP



SAN DIEGO INTERNATIONAL AIRPORT
 San Diego, California

STORM WATER MANAGEMENT PLAN
 AT SAN DIEGO INTERNATIONAL AIRPORT

FIGURE
6



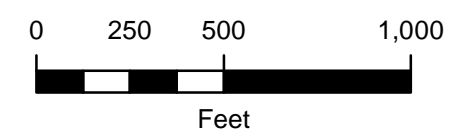
Legend

Sampling Location	Stormwater Pipe
Inlet	Trench Drain
Outfall	Direction of Surface Flow
Aircraft Lavatory Disposal	Permeable Strip Loading
Composting	Material Storage
Dumpster	Metal Storage
Fuel Storage	Oil Storage
Fueling	Portable Toilet
Grease Trap	Recycling
Industrial Waste	Underground Storage Tank
Artificial Turf	Wash Area
Eroding Area	Building/Other Roofed Structures
Least Tern Nesting Area	Drainage Basin and Number
Pervious Pavement	Airport Boundary
	Off-Airport Leased Parcels

Inlet Filter	Artificial Turf Infiltration
Cistern	Aquashield HDS
HFF Oil Stop Valve	Oil Water Separator
Underground Infiltration Basin	Pervious Gravel
Permeable Surface	Bioretention Basin
Trench Drain Filter	Subsurface Infiltration Basin
Bio Clean Grate Inlet Skimmer Box	Curb Inlet Box
Bio Clean Curb Inlet Skimmer Box	Curb Cut with Rock Infiltration Bed
Infiltration Trench	OldCastle/Kristar Perfilter Unit
Contech Storm Filter	Contech Jellyfish Unit
Contech CDS	CleanWay Metalzorb
ClearWater Solutions BMP Unit	Activated Alumina Filter Bags
Modular Wetland System	Biochar Boom
Detention Basin	Revel Environmental Manufacturing (REM) Inlet Filter
Bioswale	

Service Layer Credits: Source: Esri, Maxar, GeoEye, Earthstar Geographics, CNES/Airbus DS, USDA, USGS, AeroGRID, IGN, and the GIS User Community

PROJECT NO.: 5025-18-2002
 DATE: JANUARY 2022
 DRAWN BY: CAB
 CHECKED BY: AA/NP



SAN DIEGO INTERNATIONAL AIRPORT
 San Diego, California

STORM WATER MANAGEMENT PLAN
 AT SAN DIEGO INTERNATIONAL AIRPORT

FIGURE
7

San Diego County Regional Airport Authority Leadership Group

