

## **Appendix B – Best Management Practices**

### APPENDIX B BEST MANAGEMENT PRACTICES

Due to the overlap of labels on maps in Appendix B, all legend numbers may not be fully visible. However, a full list of tenants who implement each BMP category is displayed in the map legend, and tenant operating areas can be seen on Appendix E maps.

## Appendix B – Best Management Practices



**Appendix B – Best Management Practices**

<b>BMP SC01</b>	<b>NON-STORM WATER MANAGEMENT</b>	
	<p><b>PURPOSE:</b> Eliminate non-storm water discharges to the storm water collection system.</p>	<p><b>TARGETED ACTIVITIES:</b></p> <ul style="list-style-type: none"> <li>➔ Aircraft Deicing/Anti-Icing</li> <li>➔ Aircraft Lavatory Service</li> <li>➔ All Cleaning</li> <li>➔ All Fueling</li> <li>➔ All Maintenance</li> <li>➔ All Storage</li> <li>➔ All Washing</li> <li>➔ Cargo Handling</li> <li>➔ Fire Fighting Equipment Testing</li> <li>➔ Floor Washdowns</li> <li>➔ Garbage Collection</li> <li>➔ Landscape Irrigation</li> <li>➔ Painting/Stripping</li> <li>➔ Potable Water System Flush</li> <li>➔ Runway Rubber Removal</li> </ul>
	<p><b>POLLUTION PREVENTION:</b></p>	
	<p>Implement the following pollution prevention practices and BMPs to prevent non-storm water discharges to the storm water collection system (also see Section 3 for authorized and unauthorized non-storm water discharges, and BMPs to control them):</p> <ul style="list-style-type: none"> <li><input type="checkbox"/> Perform visual inspections of discharge points to the storm drain system – observe uncharacteristic volumes, any staining, colors, turbidity, odors, deposition, floatables, and foaming characteristics of any flow.</li> <li><input type="checkbox"/> Locate illicit connections to the storm drain system by visual inspections, CCTV survey, smoke testing, dye testing, and electromagnetic radio frequency testing.</li> <li><input type="checkbox"/> Isolate problem areas and plug illicit discharge points.</li> <li><input type="checkbox"/> Post “No Dumping” signs with a phone number for reporting dumping and disposal.</li> <li><input type="checkbox"/> Use “dry” cleaning and surface preparation techniques where feasible.</li> <li><input type="checkbox"/> Inspect waste and material containers frequently for leaks and proper closure seal.</li> <li><input type="checkbox"/> Maintain adequate supplies of spill response equipment and materials in accessible locations near areas where spills may occur.</li> <li><input type="checkbox"/> Investigate the use of automatic rain shutoff devices or smart controllers, micro irrigation systems, or low water use landscaping to minimize irrigation runoff. Experiment in new technologies and practices to conserve water. Implement mandatory water conservation measures.</li> </ul>	<p><b>POLLUTANTS of CONCERN:</b></p> <ul style="list-style-type: none"> <li>➔ Aircraft Fire Fighting Foam</li> <li>➔ Bacteria</li> <li>➔ Battery Acid</li> <li>➔ Deicing/Anti-Icing Fluid</li> <li>➔ Dumpster Wastes</li> <li>➔ Floatables</li> <li>➔ Oil and Grease</li> <li>➔ Fuel</li> <li>➔ Landscape Waste</li> <li>➔ Lavatory Chemical Wastes</li> <li>➔ Metals</li> <li>➔ Nutrients</li> <li>➔ Paint</li> <li>➔ Pesticides/Herbicides/Fertilizers</li> <li>➔ Potable Water System Chemicals</li> <li>➔ Rubber Particles</li> <li>➔ Sediment</li> <li>➔ Solvents/Cleaning Solutions</li> <li>➔ Vehicle Fluids</li> </ul>

**Appendix B – Best Management Practices**

<b>BMP SC01</b>	<b>NON-STORM WATER MANAGEMENT</b>	
<input type="checkbox"/> Use recycled or non-potable water for construction purposes when available.  <input type="checkbox"/> Authorized non-stormwater discharges include the following (provided that BMPs are in place to control them): fire-hydrant and fire prevention or response system flushing; potable water sources and system flushing; drinking water fountains; air conditioning, refrigerator or compressor condensation; landscape irrigation watering provided that Integrated Pest Management practices have been used, seawater infiltration, incidental windblown cooling tower mist, and uncontaminated natural springs, groundwater, foundation drainage, and footing drainage. All other non-stormwater discharges are prohibited.  <b>NEVER HOSE DOWN OR BURY MATERIAL SPILLS</b>		
<b>OPERATIONS:</b>		
<b>Sub-BMPs</b> - 01 <input type="checkbox"/> Notify Airport Operations (619-400-2710) and the Airport Authority Planning & Environmental Affairs Department (619-400-2784) if there is any evidence of illicit connections or illegal discharges.  - 02 <input type="checkbox"/> Provide the appropriate level of employee, tenant and public training or education in non-storm water discharge management, i.e., spill response and prevention, non-storm water pollution prevention, and hazardous materials management.  - 03 <input type="checkbox"/> Limit the availability of outdoor water supplies (e.g. hose bibs, faucets) and post with appropriate use signs to discourage uses that may pollute the storm drain system/receiving water.  - 04 <input type="checkbox"/> Ensure the site is free of illicit connections and illegal discharges.  - 05 <input type="checkbox"/> Do not irrigate during forecasted rain events and 48 hours following a rain event.  - 06 <input type="checkbox"/> Periodically inspect and maintain irrigation systems and landscaped areas to prevent prohibited over-irrigation and to repair any leaks.  - 07 <input type="checkbox"/> Direct air conditioning or refrigerator condensation to landscaping, porous surface, into the sanitary sewer, or for reuse.  - 08 <input type="checkbox"/> Irrigate using the satellite water-tracking system to reach proper levels of soil moisture applicable for landscaping and follow City water restriction guidelines.  - 09 <input type="checkbox"/> Use a hand-held hose equipped with positive shut-off nozzle, handheld water container, or timed sprinkler system to irrigate landscaped areas.  - 10 <input type="checkbox"/> Prohibit over-irrigation of landscaped areas		<b>APPLICABLE TENANTS/ DEPARTMENTS:</b>  → ABM → ACE → Air Canada → Alaska → Allegiant → American Airlines → ARFF → Avis → Bradford → British Airways → Cartwright → Conrac → Delta → DHL → Edelweiss → FedEx → Flagship → Frontier → Hawaiian → HFF → HMS Host → JAL → JetBlue → Kirschcohn → Lufthansa → Menzies → Menzies Fuel Farm → Mission Yogurt → Port of San Diego → SANCO → SDCRAA → Siemens → Signature → Southwest → SP Plus

**Appendix B – Best Management Practices**

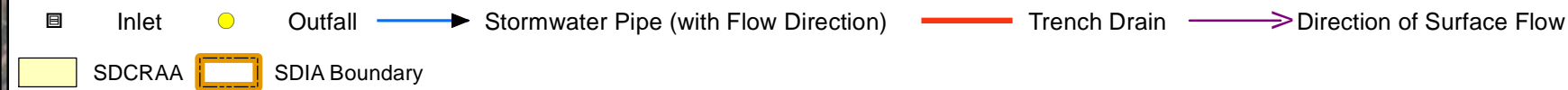
<b>BMP SC01</b>	<b>NON-STORM WATER MANAGEMENT</b>	
		<ul style="list-style-type: none"> <li>→ Spirit</li> <li>→ SSP</li> <li>→ Sun Country</li> <li>→ Swoop Airlines</li> <li>→ United</li> <li>→ UPS</li> <li>→ WestJet</li> </ul>
<p><b>STRUCTURAL TREATMENT BMPs:</b> Refer to BMP TC01 for information on structural treatment BMPs.</p>		
<p><b>BMP FREQUENCIES/EQUIPMENT/TOOLS:</b> Observations of illicit discharges and connections are on a continual, ad hoc basis, during normal operations, and reported when observed. Formal inspections are conducted as described in Section 3.0 and Appendix D-2. Training frequencies and tools are described in Sections 7.0 and 9.0. Irrigation frequencies and tools are described in Section 3.0.</p>		
<p><b>AUTHORIZED LOCATIONS TO IMPLEMENT BMPs TO PREVENT NON-STORM WATER DISCHARGES:</b></p>		
<input type="checkbox"/>	<p>Implement BMPs for the prevention of non-storm water discharges within the entire airport boundary. In particular, do not discharge non-storm water to the designated areas (storm drains) as shown on the attached map.</p>	
<p>Date:</p>		<p>Version: 2.0</p>

**Appendix B - Best Management Practices**

Intentionally Left Blank

**Tenants Implementing SC-01 BMP:  
Non-Storm Water Management**

- |                       |               |                |                  |                      |                     |                 |                  |                         |
|-----------------------|---------------|----------------|------------------|----------------------|---------------------|-----------------|------------------|-------------------------|
| 1 - Alaska            | 10 - Delta    | 16 - JetBlue   | 23 - United      | 29 - West Jet        | 42 - JAL            | 77 - Conrac     | 103 - Lufthansa  | 113 - Swoop Airlines    |
| 2 - Menzies Fuel Farm | 12 - FedEx    | 18 - ACE       | 24 - UPS         | 35 - Spirit          | 45 - SSP            | 78 - Signature  | 105 - Kirschcohn | 114 - Port of San Diego |
| 4 - American          | 13 - Frontier | 19 - SDCRAA    | 26 - Allegiant   | 37 - British Airways | 46 - HFF            | 96 - Cartwright | 107 - SANCO      |                         |
| 6 - ARFF              | 14 - Hawaiian | 21 - Southwest | 27 - Air Canada  | 38 - DHL             | 47 - Mission Yogurt | 100 - Edelweiss | 108 - ABM        |                         |
| 7 - Menzies           | 15 - HMS Host | 22 - FlagShip  | 28 - Sun Country | 40 - Bradford        | 50 - Siemens        | 102 - SP Plus   | 111 - AVIS       |                         |



Service Layer Credits: Source: Esri, Maxar, GeoEye, Earthstar

<p>PROJECT NO.: 5025-18-2002</p> <p>DATE: JANUARY 2022</p> <p>DRAWN BY: CAB</p> <p>CHECKED BY: AA/NP</p>		<p>0 250 500 1,000 1,500 Feet</p>		<p><b>STORM WATER MANAGEMENT PLAN AT SAN DIEGO INTERNATIONAL AIRPORT</b></p> <p>San Diego, California</p>	<p><b>SC-01 BMP: Non-Storm Water Management</b></p>	<p>FIGURE SC-01</p>
--	--	---------------------------------------	--	---	---	-------------------------

**Appendix B – Best Management Practices**

<b>BMP SC02A</b>		<b>OUTDOOR EQUIPMENT OPERATIONS AND MAINTENANCE AREAS</b>	
<p><b>PURPOSE:</b> To prevent the discharge of pollutants to storm water from outdoor equipment operations and general maintenance facilities.</p>		<p><b>TARGETED ACTIVITIES:</b></p> <ul style="list-style-type: none"> <li>➔ All Outdoor Equipment Operations</li> <li>➔ All Maintenance</li> </ul>	
<p><b>POLLUTION PREVENTION:</b></p>		<p><b>POLLUTANTS of CONCERN:</b></p>	
	<p>Implement the following pollution prevention practices and BMPs to prevent discharges of pollutants from outdoor equipment operations and maintenance activities to the storm water collection system:</p> <ul style="list-style-type: none"> <li><input type="checkbox"/> Provide covered maintenance areas when designing new facilities or upgrading existing facilities. If possible, utilize indoor areas, lean-tos, or portable covers.</li> <li><input type="checkbox"/> Perform the activity during dry periods.</li> <li><input type="checkbox"/> Use non-toxic, biodegradable chemicals or products for maintenance, minimize or eliminate the use of solvents and substitute materials with less hazardous properties where feasible.</li> <li><input type="checkbox"/> Use absorbent materials at potential problem areas. Adequately collect/remove absorbent materials from area after use and dispose of them in an appropriate manner.</li> <li><input type="checkbox"/> <b>DO NOT HOSE DOWN WORK AREAS TO THE STORM DRAIN SYSTEM.</b> Notify Airport Operations (619-400-2710) and the Airport Authority Planning &amp; Environmental Affairs Department (619-400-2784) if any evidence of the disposal of solvents or cleaning solutions to the storm drain has occurred.</li> </ul>	<ul style="list-style-type: none"> <li>➔ Bacteria</li> <li>➔ Battery Acid</li> <li>➔ Fuel</li> <li>➔ Metals</li> <li>➔ Nutrients</li> <li>➔ Oil and Grease</li> <li>➔ Organics</li> <li>➔ Paint</li> <li>➔ Sediments</li> <li>➔ Solvents/Cleaning Solutions</li> <li>➔ Trash</li> <li>➔ Vehicle Fluids</li> </ul>	
<p><b>OPERATIONS:</b></p>		<p><b>APPLICABLE TENANTS/ DEPARTMENTS:</b></p>	
<p><b>Sub-BMPs</b></p> <ul style="list-style-type: none"> <li>- 01 <input type="checkbox"/></li> <li>- 02 <input type="checkbox"/></li> </ul>	<p>Equipment operations and maintenance areas should not be located directly in the path of storm drains.</p> <p>Perform equipment operations and maintenance in designated areas with overhead cover for pollutant sources and/or activity areas.</p> <p><b>SEE ALSO BMP SC02B</b></p>	<ul style="list-style-type: none"> <li>➔ ACE</li> <li>➔ Air Canada</li> <li>➔ Alaska</li> <li>➔ Allegiant</li> <li>➔ American Airlines</li> <li>➔ ARFF</li> <li>➔ Bradford</li> <li>➔ British Airways</li> <li>➔ Cartwright</li> <li>➔ Conrac</li> <li>➔ Delta</li> <li>➔ DHL</li> <li>➔ Edelweiss</li> <li>➔ FedEx</li> <li>➔ Flagship</li> <li>➔ Frontier</li> </ul>	



**Appendix B – Best Management Practices**

<b>BMP SC02A</b>	<b>OUTDOOR EQUIPMENT OPERATIONS AND MAINTENANCE AREAS</b>	
		<ul style="list-style-type: none"> <li>→ Hawaiian</li> <li>→ HMS Host</li> <li>→ JAL</li> <li>→ JetBlue</li> <li>→ Lufthansa</li> <li>→ Menzies</li> <li>→ Menzies Fuel Farm</li> <li>→ SANCO</li> <li>→ SDCRAA</li> <li>→ Signature</li> <li>→ Southwest</li> <li>→ SP Plus</li> <li>→ Spirit</li> <li>→ SSP</li> <li>→ Sun Country</li> <li>→ Swoop Airlines</li> <li>→ United</li> <li>→ UPS</li> <li>→ WestJet</li> </ul>
<p><b>STRUCTURAL TREATMENT BMPs:</b> Refer to BMP TC01 for information on structural treatment BMPs.</p>		
<p><b>BMP FREQUENCIES/EQUIPMENT/TOOLS:</b> Maintenance is conducted as needed using either indoor shops, or under temporary or permanent cover when available and feasible.</p>		
<p><b>AUTHORIZED OUTDOOR OPERATIONS AND MAINTENANCE LOCATIONS:</b></p>		
<p><input type="checkbox"/> Use only the designated areas for outdoor operations and maintenance activities as shown in the attached map.</p>		
<p>Date:</p>	<p>Version: 2.0</p>	

**Appendix B - Best Management Practices**

Intentionally Left Blank

**Tenants Implementing SC-02-A BMP:  
Outdoor Equipment Operations Maintenance Areas**

- |                       |               |               |                |                  |                      |               |                 |                      |
|-----------------------|---------------|---------------|----------------|------------------|----------------------|---------------|-----------------|----------------------|
| 1 - Alaska            | 7 - Menzies   | 14 - Hawaiian | 19 - SDCRAA    | 24 - UPS         | 29 - West Jet        | 40 - Bradford | 78 - Signature  | 103 - Lufthansa      |
| 2 - Menzies Fuel Farm | 10 - Delta    | 15 - HMS Host | 21 - Southwest | 26 - Allegiant   | 35 - Spirit          | 42 - JAL      | 96 - Cartwright | 107 - SANCO          |
| 4 - American          | 12 - FedEx    | 16 - JetBlue  | 22 - FlagShip  | 27 - Air Canada  | 37 - British Airways | 45 - SSP      | 100 - Edelweiss | 113 - Swoop Airlines |
| 6 - ARFF              | 13 - Frontier | 18 - ACE      | 23 - United    | 28 - Sun Country | 38 - DHL             | 77 - Conrac   | 102 - SP Plus   |                      |

SDCRAA SDIA Boundary



Service Layer Credits: Source: Esri, Maxar, GeoEye, Earthstar

<p>PROJECT NO.: 5025-18-2002</p> <p>DATE: JANUARY 2022</p> <p>DRAWN BY: CAB</p> <p>CHECKED BY: AA/NP</p>		<p>0 250 500 1,000 1,500 Feet</p>		<p><b>STORM WATER MANAGEMENT PLAN AT SAN DIEGO INTERNATIONAL AIRPORT</b> San Diego, California</p>	<p><b>SC-02-A BMP: Outdoor Equipment Operations Maintenance Areas</b></p>	<p>FIGURE SC-02-A</p>
--	--	---------------------------------------	--	--	---	---------------------------

**Appendix B – Best Management Practices**

<b>BMP SC02B</b>		<b>AIRCRAFT, GROUND VEHICLE, AND EQUIPMENT MAINTENANCE</b>	
<p><b>PURPOSE:</b> To prevent or reduce the discharge of pollutants to storm water from any type of aircraft, vehicle, or equipment maintenance and repair, including ground vehicle and equipment painting/stripping and floor washdowns.</p>		<p><b>TARGETED ACTIVITIES:</b></p> <ul style="list-style-type: none"> <li>➔ Aircraft Maintenance</li> <li>➔ Vehicle Maintenance</li> <li>➔ Equipment Maintenance</li> </ul>	
<p><b>POLLUTION PREVENTION:</b></p>		<p><b>POLLUTANTS of CONCERN:</b></p>	
<p><input type="checkbox"/> Implement the following pollution prevention practices and BMPs to prevent discharges of pollutants to the storm water collection system:</p>	<p><input type="checkbox"/> Provide covered maintenance areas when designing new facilities or upgrading existing facilities. Utilize indoor areas, lean-tos, or portable covers.</p> <p><input type="checkbox"/> Perform the activity during dry periods.</p> <p><input type="checkbox"/> Use non-toxic, biodegradable chemicals or products for maintenance, minimize or eliminate the use of solvents and substitute materials with less hazardous properties where feasible (e.g. non-chlorinated solvents or water-based solvents instead of chlorinated solvents, non-caustic detergents instead of caustic cleaners, or cleaning without liquid cleaners like a wire brush).</p> <p><input type="checkbox"/> Recycle or properly dispose of the following: greases, oils, antifreeze, brake fluid, cleaning solutions, hydraulic fluid, batteries, and transmission fluid. Drain and crush oil filters and oil containers before recycling or disposal. Store crushed oil filters, empty lubricant containers, and cracked batteries in a covered, acid-proof container (for batteries), and leak-proof covered secondary containment (for all waste).</p> <p><input type="checkbox"/> <b>DO NOT HOSE DOWN WORK AREAS TO THE STORM DRAIN SYSTEM.</b> Notify Airport Operations (619-400-2710) and the Airport Authority Planning &amp; Environmental Affairs Department (619-400-2784) if there is any evidence of the disposal of solvents, cleaning solutions or other materials to the storm drain, or hosing down of work areas.</p>	<ul style="list-style-type: none"> <li>➔ Battery Acid</li> <li>➔ Fuel</li> <li>➔ Metals</li> <li>➔ Nutrients</li> <li>➔ Oil and Grease</li> <li>➔ Organics</li> <li>➔ Paint</li> <li>➔ Sediments</li> <li>➔ Solvents/Cleaning Solutions</li> <li>➔ Vehicle Fluids</li> </ul>	
<p><b>OPERATIONS:</b></p>		<p><b>APPLICABLE TENANTS/ DEPARTMENTS:</b></p>	
<p><b>Sub-BMPs</b></p> <p>- 01 <input type="checkbox"/> Employees are trained in safe vehicle and equipment operations and maintenance.</p> <p>- 02 <input type="checkbox"/> Aircraft, vehicle, and equipment maintenance areas should not be located directly in the path of storm drains.</p> <p>- 03 <input type="checkbox"/> Perform maintenance of aircraft, ground vehicles and equipment in designated areas that are either indoors or are covered, bermed, enclosed, or sloped/positioned away from the MS4.</p> <p>- 04 <input type="checkbox"/> Perform regular equipment inspection and testing.</p>	<p>Employees are trained in safe vehicle and equipment operations and maintenance.</p> <p>Aircraft, vehicle, and equipment maintenance areas should not be located directly in the path of storm drains.</p> <p>Perform maintenance of aircraft, ground vehicles and equipment in designated areas that are either indoors or are covered, bermed, enclosed, or sloped/positioned away from the MS4.</p> <p>Perform regular equipment inspection and testing.</p>	<ul style="list-style-type: none"> <li>➔ ABM</li> <li>➔ ACE</li> <li>➔ Air Canada</li> <li>➔ Alaska</li> <li>➔ Allegiant</li> <li>➔ American Airlines</li> <li>➔ ARFF</li> <li>➔ Avis</li> <li>➔ Bradford</li> <li>➔ British Airways</li> <li>➔ Cartwright</li> </ul>	

**Appendix B – Best Management Practices**

<b>BMP SC02B</b>	<b>AIRCRAFT, GROUND VEHICLE, AND EQUIPMENT MAINTENANCE</b>	
<p>- 05 <input type="checkbox"/></p> <p>- 06 <input type="checkbox"/></p> <p>- 07 <input type="checkbox"/></p> <p>- 08 <input type="checkbox"/></p> <p>- 09 <input type="checkbox"/></p> <p>- 10 <input type="checkbox"/></p> <p>- 11 <input type="checkbox"/></p> <p>- 12 <input type="checkbox"/></p> <p>- 13 <input type="checkbox"/></p>	<p>Inspect aircraft, vehicles, and equipment on a regular basis for fluid leaks. Place drip pans under leaks as needed.</p> <p>Maintain aircraft, vehicles, and equipment in good condition to prevent or correct any leakage of oil or other fluids.</p> <p>Use drip pans during maintenance.</p> <p>Do not leave drip pans containing fluids or other open containers lying around. Regularly transfer fluids for recycling or proper disposal.</p> <p>Minimize the use of solvents or use less toxic solvents whenever possible. If solvents cannot be avoided, clean or drain parts in self-contained sinks or drum units and check those units regularly for leaks.</p> <p>Store mechanical parts, equipment and vehicles awaiting repair/removal under cover and away from storm drains.</p> <p>Store spill response materials in maintenance areas and on maintenance vehicles. Adequately collect/remove absorbent materials from area after use and dispose of them in an appropriate manner.</p> <p>Remove fluids and batteries from salvage vehicles and equipment and dispose of properly.</p> <p>Properly dispose of obsolete and inoperable vehicles and equipment.</p>	<ul style="list-style-type: none"> <li>→ Conrac</li> <li>→ Delta</li> <li>→ DHL</li> <li>→ Edelweiss</li> <li>→ FedEx</li> <li>→ Flagship</li> <li>→ Frontier</li> <li>→ Hawaiian</li> <li>→ HMS Host</li> <li>→ JAL</li> <li>→ JetBlue</li> <li>→ Kirschcohn</li> <li>→ Lufthansa</li> <li>→ Menzies</li> <li>→ Menzies Fuel Farm</li> <li>→ SANCO</li> <li>→ SDCRAA</li> <li>→ Siemens</li> <li>→ Signature</li> <li>→ Southwest</li> <li>→ SP Plus</li> <li>→ Spirit</li> <li>→ SSP</li> <li>→ Sun Country</li> <li>→ Swoop Airlines</li> <li>→ United</li> <li>→ UPS</li> <li>→ WestJet</li> </ul>
<p><b>STRUCTURAL TREATMENT BMPs:</b> Refer to BMP TC01 for information on structural treatment BMPs.</p>		
<p><b>BMP FREQUENCIES/EQUIPMENT/TOOLS:</b> Maintenance is conducted as needed using either indoor shops, or under temporary or permanent cover when available and feasible. Equipment/tools to implement BMPs include drip pans, outdoor sheds, storage containers, tarps, secondary containment devices, spill kits and drums.</p>		
<p><b>AUTHORIZED AIRCRAFT, GROUND VEHICLE AND EQUIPMENT MAINTENANCE LOCATIONS:</b></p>		
<p><input type="checkbox"/></p>	<p>Use only the designated areas for aircraft, ground vehicle and equipment maintenance as shown in the attached map.</p>	
<p>Date:</p>	<p>Version: 2.0</p>	

**Appendix B - Best Management Practices**

Intentionally Left Blank

**Tenants Implementing SC-02-B BMP:  
Aircraft, Ground Vehicle & Equipment Maintenance**

- |                       |               |               |                |                  |                      |               |                 |                  |                      |
|-----------------------|---------------|---------------|----------------|------------------|----------------------|---------------|-----------------|------------------|----------------------|
| 1 - Alaska            | 7 - Menzies   | 14 - Hawaiian | 19 - SDCRAA    | 24 - UPS         | 29 - West Jet        | 40 - Bradford | 77 - Conrac     | 102 - SP Plus    | 108 - ABM            |
| 2 - Menzies Fuel Farm | 10 - Delta    | 15 - HMS Host | 21 - Southwest | 26 - Allegiant   | 35 - Spirit          | 42 - JAL      | 78 - Signature  | 103 - Lufthansa  | 111 - AVIS           |
| 4 - American          | 12 - FedEx    | 16 - JetBlue  | 22 - FlagShip  | 27 - Air Canada  | 37 - British Airways | 45 - SSP      | 96 - Cartwright | 105 - Kirschcohn | 113 - Swoop Airlines |
| 6 - ARFF              | 13 - Frontier | 18 - ACE      | 23 - United    | 28 - Sun Country | 38 - DHL             | 50 - Siemens  | 100 - Edelweiss | 107 - SANCO      |                      |

SDCRAA SDIA Boundary



Service Layer Credits: Source: Esri, Maxar, GeoEye, Earthstar

**Appendix B – Best Management Practices**

<b>BMP SC02C</b>		<b>ELECTRIC VEHICLE MAINTENANCE</b>	
<b>PURPOSE:</b> To prevent or reduce the discharge of pollutants to storm water from electric ground vehicle charging, maintenance, and repair.		<b>TARGETED ACTIVITIES:</b> → Vehicle Maintenance → Battery Charging	
<b>POLLUTION PREVENTION:</b>		<b>POLLUTANTS of CONCERN:</b>	
<input type="checkbox"/> Implement the following pollution prevention practices and BMPs to prevent discharges of pollutants to the storm water collection system:  <input type="checkbox"/> Develop a battery maintenance plan to provide procedures for cleaning and maintenance, develop a schedule for service, and to correct any issues that can potentially arise.  <input type="checkbox"/> Investigate use of smart chargers with multi-stage charging capability.	→ Battery Acid → Battery Acid Neutralizing Agents → Metals → Vehicle Fluids		
<b>OPERATIONS:</b>		<b>APPLICABLE TENANTS/ DEPARTMENTS:</b>	
<b>Sub-BMPs</b>			
- 01 <input type="checkbox"/>	Do not overcharge batteries in electric vehicles.	→ ACE	
- 02 <input type="checkbox"/>	Park electric vehicles in cool and dry areas (e.g. shade under building) when not in use.	→ Alaska	
- 03 <input type="checkbox"/>	Use acid resistant drip pans sprinkled with battery acid neutralizing agent (e.g. lime or baking soda) when filling or cleaning electric vehicle batteries and dispose of waste properly.	→ American Airlines	
- 04 <input type="checkbox"/>	Maintain battery acid neutralizing kits adjacent to charging stations. Adequately recover spill response material from area after use and dispose of them in an appropriate manner.	→ Delta	
-05 <input type="checkbox"/>	Avoid overfilling electric vehicle batteries.	→ JAL	
-06 <input type="checkbox"/>	Do not fill batteries or perform electric vehicle maintenance during rain events.	→ SANCO	
-07 <input type="checkbox"/>	Store batteries inside in a cool and dry place if possible. If batteries are stored outside, store in a non-reactive container with a cover.	→ SDCRAA	
-08 <input type="checkbox"/>	Clean battery case and terminals regularly or when there is a buildup of corrosion with a rag dampened with a solution of water and battery acid neutralizing agent. Capture any wastewater to be treated as hazardous waste.	→ Siemens	
-09 <input type="checkbox"/>	Apply petroleum jelly or grease on battery terminals to slow down corrosion process.	→ Signature	
<b>SEE ALSO BMP SC02B</b>		→ Southwest	
<b>STRUCTURAL TREATMENT BMPs:</b> Refer to BMP TC01 for information on structural treatment BMPs.		→ Spirit	
		→ SSP	
		→ United	



**Appendix B – Best Management Practices**

<b>BMP SC02C</b>	<b>ELECTRIC VEHICLE MAINTENANCE</b>	
<b>BMP FREQUENCIES/EQUIPMENT/TOOLS:</b> Equipment/tools to implement BMPs include drip pans, neutralizing kits, outdoor sheds, storage containers, appropriate secondary containment devices, spill kits and drums.		
<b>AUTHORIZED ELECTRIC VEHICLE MAINTENANCE LOCATIONS:</b>		
<input type="checkbox"/>	Use only the designated areas for electrical vehicle maintenance as shown in the attached map.	
Date:		Version: 1.0

**Appendix B - Best Management Practices**

Intentionally Left Blank

**Tenants Implementing SC-02-C BMP:  
Electric Vehicle Maintenance**

1 - Alaska    10 - Delta    19 - SDCRAA    23 - United    42 - JAL    50 - Siemens    107 - SANCO  
 4 - American    18 - ACE    21 - Southwest    35 - Spirit    45 - SSP    78 - Signature

SDCRAA    SDIA Boundary



Service Layer Credits: Source: Esri, Maxar, GeoEye, Earthstar

<p>PROJECT NO.: 5025-18-2002</p> <p>DATE: JANUARY 2022</p> <p>DRAWN BY: CAB</p> <p>CHECKED BY: AA/NP</p>		<p>0 250 500 1,000 1,500</p> <p>Feet</p>		<p><b>STORM WATER MANAGEMENT PLAN AT SAN DIEGO INTERNATIONAL AIRPORT</b> San Diego, California</p>	<p><b>SC-02-C BMP: Electric Vehicle Maintenance</b></p>	<p>FIGURE SC-02-C</p>
--	--	--	--	--	---	---------------------------

**Appendix B – Best Management Practices**

<b>BMP SC03</b>		<b>AIRCRAFT, GROUND VEHICLE, AND EQUIPMENT FUELING</b>	
<p><b>PURPOSE:</b> To prevent fuel spills and leaks and reduce their impacts to storm water.</p>		<p><b>TARGETED ACTIVITIES:</b></p> <ul style="list-style-type: none"> <li>➔ Aircraft Fueling</li> <li>➔ Vehicle Fueling</li> <li>➔ Equipment Fueling</li> </ul>	
<p><b>POLLUTION PREVENTION:</b></p>		<p><b>POLLUTANTS of CONCERN:</b></p>	
<p><input type="checkbox"/> Use pigs/mats over storm drains during fueling activities.</p> <p><input type="checkbox"/> Fuel pumps should be posted with signs stating “No Topping Off” to prevent overflow.</p> <p><input type="checkbox"/> Use absorbent materials and spot cleaning for small spills, and properly dispose of the spill response materials.</p> <p><input type="checkbox"/> Properly dispose of any fuel spills and leaks. If feasible, collect any fuel spills through vacuum equipment / trucks.</p> <p><input type="checkbox"/> Report leaking vehicles to fleet maintenance.</p> <p><input type="checkbox"/> Develop and implement a Spill Prevention, Control and Countermeasure (SPCC) Plan if required under guidelines set forth in 40 CFR, Section 112.</p> <p><input type="checkbox"/> <b>DO NOT DISCHARGE FUEL TO A CATCH BASIN OR STORM DRAIN.</b> Notify Airport Operations (619-400-2710) and the Airport Authority Planning &amp; Environmental Affairs Department (619-400-2784) if any fuel spill or leak is observed.</p>	<p>➔ Fuel</p> <p>➔ Metals</p> <p>➔ Oil and Grease</p> <p>➔ Organics</p>		
<p><b>OPERATIONS:</b></p>		<p><b>APPLICABLE TENANTS/ DEPARTMENTS:</b></p>	
<p><b>Sub-BMPs</b></p> <p>- 01 <input type="checkbox"/> Perform aircraft, ground vehicle and equipment fueling in the designated areas that are covered, bermed, enclosed, or sloped/positioned away from the MS4.</p> <p>- 02 <input type="checkbox"/> Fueling areas should not be located directly in the path of storm drains.</p> <p>- 03 <input type="checkbox"/> Label, regularly inspect and keep in good condition all tanks, piping and valves.</p> <p>- 04 <input type="checkbox"/> Store absorbent booms, spill kits, or vacuum equipment in fueling areas or on fueling vehicles.</p> <p>- 05 <input type="checkbox"/> Regularly inspect fueling areas.</p> <p>- 06 <input type="checkbox"/> Monitor major fueling operations.</p>	<p>➔ ACE</p> <p>➔ Air Canada</p> <p>➔ Alaska</p> <p>➔ Allegiant</p> <p>➔ American Airlines</p> <p>➔ ARFF</p> <p>➔ British Airways</p> <p>➔ Conrac</p> <p>➔ Delta</p> <p>➔ DHL</p> <p>➔ Edelweiss</p> <p>➔ FedEx</p> <p>➔ Flagship</p> <p>➔ Frontier</p> <p>➔ Hawaiian</p> <p>➔ JAL</p> <p>➔ JetBlue</p>		

**Appendix B – Best Management Practices**

<b>BMP SC03</b>	<b>AIRCRAFT, GROUND VEHICLE, AND EQUIPMENT FUELING</b>	
<p>- 07 <input type="checkbox"/></p> <p>- 08 <input type="checkbox"/></p> <p>- 09 <input type="checkbox"/></p> <p>- 10 <input type="checkbox"/></p> <p>- 11 <input type="checkbox"/></p>	<p>Use secondary containment or cover when transferring fuel from a tanker truck to a fuel tank.</p> <p>Use leak detection, overfill protection, and spill prevention devices for tanks and piping.</p> <p>Use automatic shut-off mechanisms for fuel tankers and hose connections.</p> <p>Do not top off fuel tanks.</p> <p>Restrict access to fuel tanks and fueling vehicles.</p>	<p>→ Lufthansa</p> <p>→ Menzies</p> <p>→ Menzies Fuel Farm</p> <p>→ SANCO</p> <p>→ SDCRAA</p> <p>→ Signature</p> <p>→ Southwest</p> <p>→ Spirit</p> <p>→ Sun Country</p> <p>→ Swoop Airlines</p> <p>→ United</p> <p>→ UPS</p> <p>→ WestJet</p>
<p><b>STRUCTURAL TREATMENT BMPs:</b> Refer to BMP TC01 for information on structural treatment BMPs.</p>		
<p><b>BMP FREQUENCIES/EQUIPMENT/TOOLS:</b> Fueling is conducted as needed using bermed, sloped areas or under cover if and where possible. Equipment/tools to implement BMPs include drip pans, pigs/mats, secondary containment devices, spill kits, shut-off mechanisms and drums.</p>		
<p><b>AUTHORIZED AIRCRAFT, GROUND VEHICLE AND EQUIPMENT FUELING LOCATIONS:</b></p>		
<p><input type="checkbox"/></p>	<p>Use only the designated areas for aircraft, ground vehicle and equipment fueling as shown in the attached map.</p>	
<p>Date:</p>		<p>Version: 2.0</p>

**Appendix B - Best Management Practices**

Intentionally Left Blank

**Tenants Implementing SC-03 BMP:  
Aircraft, Ground Vehicle & Equipment Fueling**

- |                       |             |               |              |                |                 |                  |                      |                 |                      |
|-----------------------|-------------|---------------|--------------|----------------|-----------------|------------------|----------------------|-----------------|----------------------|
| 1 - Alaska            | 6 - ARFF    | 12 - FedEx    | 16 - JetBlue | 21 - Southwest | 24 - UPS        | 28 - Sun Country | 37 - British Airways | 77 - Conrac     | 103 - Lufthansa      |
| 2 - Menzies Fuel Farm | 7 - Menzies | 13 - Frontier | 18 - ACE     | 22 - FlagShip  | 26 - Allegiant  | 29 - West Jet    | 38 - DHL             | 78 - Signature  | 107 - SANCO          |
| 4 - American          | 10 - Delta  | 14 - Hawaiian | 19 - SDCRAA  | 23 - United    | 27 - Air Canada | 35 - Spirit      | 42 - JAL             | 100 - Edelweiss | 113 - Swoop Airlines |

- Fuel Storage
- Fueling
- SDCRAA
- SDIA Boundary



Service Layer Credits: Source: Esri, Maxar, GeoEye, Earthstar

<p><b>PROJECT NO.:</b> 5025-18-2002</p> <p><b>DATE:</b> JANUARY 2022</p> <p><b>DRAWN BY:</b> CAB</p> <p><b>CHECKED BY:</b> AA/NP</p>	<p>N</p>	<p>0 250 500 1,000 1,500</p> <p>Feet</p>		<p><b>STORM WATER MANAGEMENT PLAN AT SAN DIEGO INTERNATIONAL AIRPORT</b></p> <p>San Diego, California</p>	<p><b>SC-03 BMP: Aircraft, Ground Vehicle &amp; Equipment Fueling</b></p>	<p>FIGURE SC-03</p>
--	----------	--	--	---	---	-------------------------

**Appendix B – Best Management Practices**

<b>BMP SC04</b>		<b>AIRCRAFT, GROUND VEHICLE, AND EQUIPMENT CLEANING</b>	
<b>PURPOSE:</b> Prevent or reduce the discharge of pollutants to storm drains from aircraft, vehicle, and equipment washing, and equipment degreasing.		<b>TARGETED ACTIVITIES:</b> → Aircraft Washing → Vehicle Washing → Equipment Washing → Equipment Degreasing	
<b>POLLUTION PREVENTION:</b>		<b>POLLUTANTS of CONCERN:</b>	
<input type="checkbox"/> Store significant cleaning materials in leak-free containers and within areas of secondary containment.  <input type="checkbox"/> Use biodegradable, phosphate-free, non-toxic cleaning solutions.  <input type="checkbox"/> Follow water conservation practices when performing cleaning.  <input type="checkbox"/> Wash vehicles at a commercial car wash when possible.  <input type="checkbox"/> <b>DO NOT DISCHARGE WASTE WASH WATER OR CLEANING AGENTS TO A CATCH BASIN OR STORM DRAIN.</b> Notify Airport Operations (619-400-2710) and the Airport Authority Planning & Environmental Affairs Department (619-400-2784) if any non-storm water discharges from cleaning activities to the storm drain system are observed.	Implement the following pollution prevention practices and BMPs to prevent discharges from the cleaning of aircraft, ground vehicles and equipment to the storm water collection system:  → Cleaning Solutions → Oil and Grease → Solvents → Vehicle Fluids → Metals		
<b>OPERATIONS:</b>		<b>APPLICABLE TENANTS/ DEPARTMENTS:</b>	
<b>Sub-BMPs</b> - 01 <input type="checkbox"/> Keep vehicles, equipment, and washing areas clean and free of waste. - 02 <input type="checkbox"/> Use dry washing and surface preparation techniques where feasible. - 03 <input type="checkbox"/> Wash areas should not be located directly in the path of storm drains. - 04 <input type="checkbox"/> Use pigs and cover mats to cover all catch basins in the surrounding area to contain the wash water during washing activities. - 05 <input type="checkbox"/> Perform all washing activities in designated areas that capture, filter and recycle water (e.g. at new Wash Bay Facility), or use reclaimed water and divert wash water to a structural treatment control BMP, sanitary sewer or dead end sump with pump. - 06 <input type="checkbox"/> Perform routine visual observations of washing activities and inspect nearby storm drains to detect and prevent discharges from cleaning activities. - 07 <input type="checkbox"/>	→ ACE → Air Canada → Alaska → Allegiant → American Airlines → ARFF → Bradford → British Airways → Conrac → Delta → DHL → Edelweiss → FedEx → Flagship → Hawaiian → JAL → JetBlue → Menzies → Menzies Fuel Farm → SANCO → SDCRAA → Signature → Southwest		



**Appendix B – Best Management Practices**

<b>BMP SC04</b>	<b>AIRCRAFT, GROUND VEHICLE, AND EQUIPMENT CLEANING</b>	
- 08 <input type="checkbox"/>	Remove all excess materials such as drippings and residue by using vacuum methods. Properly dispose of all waste materials.	<ul style="list-style-type: none"> <li>➔ SP Plus</li> <li>➔ SSP</li> <li>➔ Swoop Airlines</li> <li>➔ United</li> <li>➔ UPS</li> <li>➔ WestJet</li> </ul>
<b>STRUCTURAL TREATMENT BMPs:</b> Refer to BMP TC01 for information on structural treatment BMPs.		
<b>BMP FREQUENCIES/EQUIPMENT/TOOLS:</b> Cleaning is conducted as needed. Equipment/tools to implement BMPs include rags, the closed loop system wash rack or the aircraft wash rack, pigs and cover mats, and shop vacuums.		
<b>AUTHORIZED AIRCRAFT, GROUND VEHICLE AND EQUIPMENT CLEANING:</b>		
<input type="checkbox"/>	Use only the designated areas for aircraft, ground vehicle and equipment cleaning as shown in the attached map.	
Date:		Version: 2.0

**Appendix B - Best Management Practices**

Intentionally Left Blank

**Tenants Implementing SC-04 BMP:  
Aircraft, Ground Vehicle & Equipment Cleaning**

- |                       |             |               |                |               |                 |                      |             |                 |                      |
|-----------------------|-------------|---------------|----------------|---------------|-----------------|----------------------|-------------|-----------------|----------------------|
| 1 - Alaska            | 6 - ARFF    | 12 - FedEx    | 18 - ACE       | 22 - FlagShip | 26 - Allegiant  | 37 - British Airways | 42 - JAL    | 78 - Signature  | 107 - SANCO          |
| 2 - Menzies Fuel Farm | 7 - Menzies | 14 - Hawaiian | 19 - SDCRAA    | 23 - United   | 27 - Air Canada | 38 - DHL             | 45 - SSP    | 100 - Edelweiss | 113 - Swoop Airlines |
| 4 - American          | 10 - Delta  | 16 - JetBlue  | 21 - Southwest | 24 - UPS      | 29 - West Jet   | 40 - Bradford        | 77 - Conrac | 102 - SP Plus   |                      |

SDCRAA SDIA Boundary



Service Layer Credits: Source: Esri, Maxar, GeoEye, Earthstar

<p>PROJECT NO.: 5025-18-2002</p> <p>DATE: JANUARY 2022</p> <p>DRAWN BY: CAB</p> <p>CHECKED BY: AA/NP</p>		<p>0 250 500 1,000 1,500</p> <p>Feet</p>		<p><b>STORM WATER MANAGEMENT PLAN AT SAN DIEGO INTERNATIONAL AIRPORT</b> San Diego, California</p>	<p><b>SC-04 BMP: Aircraft, Ground Vehicle &amp; Equipment Cleaning</b></p>	<p>FIGURE SC-04</p>
--	--	--	--	--	--	-------------------------

**Appendix B – Best Management Practices**

<b>BMP SC05</b>		<b>AIRCRAFT DEICING/ANTI-ICING</b>	
<b>PURPOSE:</b> Prevent or reduce the discharge of pollutants to storm water from aircraft deicing and anti-icing procedures.		<b>TARGETED ACTIVITIES:</b> → Aircraft Deicing → Aircraft Anti-Icing	
<b>POLLUTION PREVENTION:</b>		<b>POLLUTANTS of CONCERN:</b>	
	<p>Implement the following pollution prevention practices and BMPs to prevent discharges to the storm water collection system from aircraft deicing and anti-icing activities:</p> <ul style="list-style-type: none"> <li><input type="checkbox"/> Depending on conditions, apply only enough fluid to surfaces to ensure the safe operation of the aircraft. Excess fluid dripped to the ground contaminates soil and water if not properly contained.</li> <li><input type="checkbox"/> Maintain adequate supplies of spill response equipment and materials in accessible locations near areas where spills may occur.</li> <li><input type="checkbox"/> Recycle or dispose of the fluids in accordance with local, state, and federal regulations.</li> <li><input type="checkbox"/> Implement forthcoming recommendations of the FAA technical committee on deicing.</li> <li><input type="checkbox"/> Provide the appropriate level of employee training in the following areas: spill response and prevention, storm water pollution prevention education, right-to-know awareness training, and hazardous materials management.</li> <li><input type="checkbox"/> <b>DO NOT OVERSPRAY OR ALLOW ANY DISCHARGE OF DEICING/ANTI-ICING AGENTS TO A CATCH BASIN OR STORM DRAIN.</b> Notify Airport Operations (619-400-2710) and the Airport Authority Planning &amp; Environmental Affairs Department (619-400-2784) if any discharges of aircraft deicing or anti-icing fluids have occurred.</li> </ul>	<ul style="list-style-type: none"> <li>→ Ethylene Glycol</li> <li>→ Propylene Glycol</li> </ul>	
<b>OPERATIONS:</b>		<b>APPLICABLE TENANTS/ DEPARTMENTS:</b>	
<b>Sub-BMPs</b>		→ Southwest	
- 01 <input type="checkbox"/>	Perform all anti-icing and deicing operations only in designated areas that are covered, bermed, enclosed or sloped/positioned away from the MS4.		
- 02 <input type="checkbox"/>	Monitor deicing and anti-icing operations regularly to ensure quantities of fluids used are at a minimum while not jeopardizing aircraft safety and operation.		
- 03 <input type="checkbox"/>	All fluids are captured or diverted to a structural treatment control BMP, recycling system, sanitary sewer or dead-end sump with pump.		
- 04 <input type="checkbox"/>	Clean the designated anti-icing and deicing ramp areas following deicing/anti-icing operations with wet-type sweepers to remove		

**Appendix B – Best Management Practices**

<b>BMP SC05</b>	<b>AIRCRAFT DEICING/ANTI-ICING</b>	
	deicing fluids from the paved areas.	
<b>STRUCTURAL TREATMENT BMPs:</b> Refer to BMP TC01 for information on structural treatment BMPs.		
<b>BMP FREQUENCIES/EQUIPMENT/TOOLS:</b> Aircraft deicing is conducted as needed away from storm drains. Equipment/tools to implement BMPs include capture devices, spill kits, ramp scrubbers, and drums.		
<b>AUTHORIZED LOCATIONS TO PERFORM AIRCRAFT ANTI-ICING AND DEICING ACTIVITIES:</b>		
<input type="checkbox"/>	Use only the designated areas for aircraft anti-icing and deicing activities as shown in the attached map.	
Date:		Version: 2.0

**Appendix B - Best Management Practices**

Intentionally Left Blank

**Tenants Implementing SC-05 BMP:  
Aircraft Deicing/Anti-Icing**

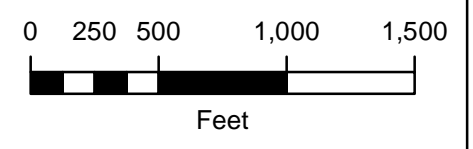
21 - Southwest

 SDIA Boundary



Service Layer Credits: Source: Esri, Maxar, GeoEye, Earthstar

PROJECT NO.:  
5025-18-2002  
DATE:  
JANUARY 2022  
DRAWN BY:  
CAB  
CHECKED BY:  
AA/NP



**STORM WATER MANAGEMENT PLAN  
AT SAN DIEGO INTERNATIONAL AIRPORT**  
San Diego, California

**SC-05 BMP:  
Aircraft Deicing/Anti-Icing**

FIGURE  
SC-05

**Appendix B – Best Management Practices**

<b>BMP SC06</b>		<b>OUTDOOR LOADING/UNLOADING OF MATERIALS</b>	
<p><b>PURPOSE:</b> Prevent or reduce the discharge of pollutants to storm water from loading and unloading of material and cargo.</p>		<p><b>TARGETED ACTIVITIES:</b></p> <ul style="list-style-type: none"> <li>➔ Cargo Handling</li> <li>➔ Fuel Storage</li> <li>➔ Chemical Storage</li> <li>➔ Equipment Storage</li> </ul>	
<p><b>POLLUTION PREVENTION:</b></p>		<p><b>POLLUTANTS of CONCERN:</b></p>	
<p><input type="checkbox"/> Transfer materials in paved areas, away from storm drain inlets.</p> <p><input type="checkbox"/> Contain and absorb leaks during transfers and spillage from hose disconnections; dispose of residue properly.</p> <p><input type="checkbox"/> Notify Airport Operations (619-400-2710) and the Airport Authority Planning &amp; Environmental Affairs Department (619-400-2784) if any evidence of illegal discharges from outdoor material loading and unloading is observed.</p>	<p>Implement the following pollution prevention practices and BMPs to prevent non-storm water discharges of pollutants from outdoor loading and unloading of materials to the storm water collection system:</p>	<ul style="list-style-type: none"> <li>➔ Fuel</li> <li>➔ Pesticides/Herbicides/Fertilizers</li> <li>➔ Oil and Grease</li> <li>➔ Solvents/Cleaning Solutions</li> <li>➔ Battery Acid</li> </ul>	
<p><b>OPERATIONS:</b></p>		<p><b>APPLICABLE TENANTS/ DEPARTMENTS:</b></p>	
<p><b>Sub-BMPs</b></p> <p>- 01 <input type="checkbox"/> Contractors and haulers should be made aware of and adhere to BMPs specifications that are relevant to the loading and unloading of materials.</p> <p>- 02 <input type="checkbox"/> Loading and unloading areas should not be located directly in the path of storm drains.</p> <p>- 03 <input type="checkbox"/> Loading and unloading areas should be graded, bermed, covered or otherwise protected to prevent contact with rainfall and storm water run-on and runoff.</p> <p>- 04 <input type="checkbox"/> Equipment used for loading and unloading should be checked on a regular basis for leaks.</p> <p>- 05 <input type="checkbox"/> Use drip pans or other containment measures under hoses.</p> <p>- 06 <input type="checkbox"/> Keep loading and unloading areas free of spills and debris by containing and absorbing leaks during transfers and spillage from hose disconnections or cargo pallets; dispose of residue or debris properly.</p> <p>- 07 <input type="checkbox"/> Spill kits or other measures are available in accessible locations near areas where spills may be likely to occur to contain spills and/or prevent tracking off-site.</p>	<p>Implement the following pollution prevention practices and BMPs to prevent non-storm water discharges of pollutants from outdoor loading and unloading of materials to the storm water collection system:</p>	<ul style="list-style-type: none"> <li>➔ Air Canada</li> <li>➔ Alaska</li> <li>➔ Allegiant</li> <li>➔ American Airlines</li> <li>➔ Bradford</li> <li>➔ British Airways</li> <li>➔ Conrac</li> <li>➔ Delta</li> <li>➔ DHL</li> <li>➔ FedEx</li> <li>➔ Flagship</li> <li>➔ Frontier</li> <li>➔ Hawaiian</li> <li>➔ HFF</li> <li>➔ HMS Host</li> <li>➔ JAL</li> <li>➔ JetBlue</li> <li>➔ Lufthansa</li> <li>➔ Menzies</li> <li>➔ Menzies Fuel Farm</li> <li>➔ Mission Yogurt</li> <li>➔ SANCO</li> <li>➔ SDCRAA</li> <li>➔ Signature</li> <li>➔ Southwest</li> <li>➔ Spirit</li> </ul>	



**Appendix B – Best Management Practices**

<b>BMP SC06</b>	<b>OUTDOOR LOADING/UNLOADING OF MATERIALS</b>	
		<ul style="list-style-type: none"> <li>→ SSP</li> <li>→ Sun Country</li> <li>→ Swoop Airlines</li> <li>→ United</li> <li>→ UPS</li> <li>→ WestJet</li> </ul>
<p><b>STRUCTURAL TREATMENT BMPs:</b> Refer to BMP TC01 for information on structural treatment BMPs.</p>		
<p><b>BMP FREQUENCIES/EQUIPMENT/TOOLS:</b> Loading/unloading is conducted as on a daily basis. Equipment/tools to implement BMPs include capture devices, drip pans, spill kits, brooms, and drums.</p>		
<p><b>AUTHORIZED LOCATIONS FOR THE OUTDOOR LOADING AND UNLOADING OF SIGNIFICANT MATERIALS:</b></p>		
<input type="checkbox"/>	<p>Use only the designated areas for outdoor loading and unloading of significant materials as shown in the attached map.</p>	
<p>Date:</p>		<p>Version: 2.0</p>

**Appendix B - Best Management Practices**

Intentionally Left Blank

**Tenants Implementing SC-06 BMP:  
Outdoor Loading/Unloading of Materials**

- |                       |               |                |                |                  |                      |                     |                      |
|-----------------------|---------------|----------------|----------------|------------------|----------------------|---------------------|----------------------|
| 1 - Alaska            | 10 - Delta    | 15 - HMS Host  | 22 - FlagShip  | 27 - Air Canada  | 37 - British Airways | 45 - SSP            | 78 - Signature       |
| 2 - Menzies Fuel Farm | 12 - FedEx    | 16 - JetBlue   | 23 - United    | 28 - Sun Country | 38 - DHL             | 46 - HFF            | 103 - Lufthansa      |
| 4 - American          | 13 - Frontier | 19 - SDCRAA    | 24 - UPS       | 29 - West Jet    | 40 - Bradford        | 47 - Mission Yogurt | 107 - SANCO          |
| 7 - Menzies           | 14 - Hawaiian | 21 - Southwest | 26 - Allegiant | 35 - Spirit      | 42 - JAL             | 77 - Conrac         | 113 - Swoop Airlines |

SDCRAA SDIA Boundary



Service Layer Credits: Source: Esri, Maxar, GeoEye, Earthstar

<p>PROJECT NO.: 5025-18-2002</p> <p>DATE: JANUARY 2022</p> <p>DRAWN BY: CAB</p> <p>CHECKED BY: AA/NP</p>		<p>0 250 500 1,000 1,500</p> <p>Feet</p>		<p><b>STORM WATER MANAGEMENT PLAN AT SAN DIEGO INTERNATIONAL AIRPORT</b></p> <p>San Diego, California</p>	<p><b>SC-06 BMP: Outdoor Loading/Unloading of Materials</b></p>	<p>FIGURE SC-06</p>
--	--	--	--	---	---	-------------------------

**Appendix B – Best Management Practices**

<b>BMP SC07</b>	<b>OUTDOOR MATERIAL STORAGE</b>	
<p><b>PURPOSE:</b> Prevent or reduce the discharge of pollutants to storm water from outdoor storage areas for significant material (e.g., fuels, chemicals, bagged material on pallets, soils or asphalt materials bulk storage, deicing, compounds, etc.)</p>	<p><b>TARGETED ACTIVITIES:</b></p> <ul style="list-style-type: none"> <li>➔ Aircraft/Vehicle/Equipment Maintenance</li> <li>➔ Aircraft/Vehicle Fueling</li> <li>➔ Fuel/Chemical/Equipment Storage</li> <li>➔ Cargo Handling</li> </ul>	
<p><b>POLLUTION PREVENTION:</b></p>	<p>Implement the following pollution prevention practices and BMPs to prevent discharges of pollutants from outdoor storage areas to the storm water collection system:</p> <ul style="list-style-type: none"> <li><input type="checkbox"/> Store all significant materials indoors or under cover areas with secondary containment (e.g. dog house design).</li> <li><input type="checkbox"/> Develop and implement a Spill Prevention Control and Countermeasure (SPCC) Plan if required.</li> <li><input type="checkbox"/> Install overflow protection devices on ASTs to warn the operator or install automatic shut-off transfer pumps.</li> <li><input type="checkbox"/> Restrict access to AST, piping, valves.</li> <li><input type="checkbox"/> Properly label all storage containers</li> <li><input type="checkbox"/> Train personnel in the handling and management of hazardous materials.</li> <li><input type="checkbox"/> Store hazardous materials away from high-traffic areas to prevent accidental spills or damage to storage containers. Make storage containers highly visible to traffic with traffic cones or posts.</li> <li><input type="checkbox"/> Use tarpaulins, plastic sheeting (e.g. storm-resistant polyethylene, polypropylene, or hypalon covering), roofs, buildings, and other enclosures for temporary or permanent coverings that are effective in preventing storm water contamination.</li> <li><input type="checkbox"/> Stack storage containers in accordance with the manufacturers' directions.</li> <li><input type="checkbox"/> In hazardous materials storage areas ensure sufficient aisle space to provide access for inspections and to improve the ease of material transport.</li> <li><input type="checkbox"/> Place adequate spill kits in appropriate locations.</li> </ul>	<p><b>POLLUTANTS of CONCERN:</b></p> <ul style="list-style-type: none"> <li>➔ Fuel</li> <li>➔ Solvents/Cleaning Solutions</li> <li>➔ Deicing/Anti-Icing Fluids</li> </ul>

**Appendix B – Best Management Practices**

<b>BMP SC07</b>		<b>OUTDOOR MATERIAL STORAGE</b>	
<b>OPERATIONS:</b>		<b>APPLICABLE TENANTS/ DEPARTMENTS:</b>	
<b>Sub-BMPs</b>			
- 01 <input type="checkbox"/>	Outdoor material storage areas and equipment should not be located directly in the path of storm drains.	→	ABM
- 02 <input type="checkbox"/>	Outdoor material storage areas have areas with overhead cover and secondary containment.	→	ACE
- 03 <input type="checkbox"/>	Outdoor material storage areas are prevented from contacting stormwater run-on and run-off (e.g., by the use of berms, wood pallets etc).	→	Air Canada
- 04 <input type="checkbox"/>	Cover and contain material stockpiles or implement erosion control practices at the perimeter of the site and at any inlets or catch basins to prevent the off-site transport of eroded material.	→	Alaska
- 05 <input type="checkbox"/>	Cover wood products treated with preservative chemicals with tarps or store them indoors.	→	Allegiant
- 06 <input type="checkbox"/>	Install protection guards (bollards, posts, or guardrails) around ASTs and piping to prevent damage from vehicles or forklifts and any subsequent release.	→	American Airlines
- 07 <input type="checkbox"/>	Regular inspections are performed on tanks, storage containers, and berms to check for corrosion, structural failure, loose fittings, poor welds, leaks etc. Repairs or replacements are performed as needed.	→	ARFF
- 08 <input type="checkbox"/>	Liquid materials in ASTs should be stored in double-walled, valved storage tanks or within concrete bermed secondary containment areas to provide the capacity to contain the entire volume of the single largest container, with sufficient freeboard to contain precipitation. The area inside the curb should slope to a locked or valved drain.	→	Bradford
- 09 <input type="checkbox"/>	Precipitation from bermed areas should be drained to the sanitary sewer if available, or inspected and tested according to applicable regulations prior to its release to a storm drain. The drain must have a positive control, such as a lock, valve, or plug, below the product level in the tank to prevent release of contaminated liquids.	→	British Airlines
- 10 <input type="checkbox"/>	Properly dispose of ponded storm water removed from bermed or containment areas.	→	Cartwright
- 11 <input type="checkbox"/>	The facility/operation has and displays a County hazardous materials permit for hazardous materials storage.	→	Conrac
- 12 <input type="checkbox"/>	Maintain an accurate, up-to-date inventory of the materials delivered and stored on site.	→	Delta
- 13 <input type="checkbox"/>	Do not permanently store equipment and materials in the bed of a pickup truck. If storing temporarily, provide cover and containment.	→	DHL
		→	FedEx
		→	Flagship
		→	Frontier
		→	Hawaiian
		→	HMS Host
		→	JAL
		→	JetBlue
		→	Menzies
		→	Menzies Fuel Farm
		→	SANCO
		→	SDCRAA
		→	Siemens
		→	Signature
		→	Southwest
		→	Spirit
		→	SP Plus
		→	SSP
		→	Sun Country
		→	United
		→	UPS
		→	WestJet
<b>STRUCTURAL TREATMENT BMPs:</b> Refer to BMP TC01 for information on			

**Appendix B – Best Management Practices**

<b>BMP SC07</b>	<b>OUTDOOR MATERIAL STORAGE</b>	
structural treatment BMPs.		
<b>BMP FREQUENCIES/EQUIPMENT/TOOLS:</b> Outdoor material storage occurs on a daily basis. Equipment/tools to implement BMPs include spill pallets, outdoor sheds, overpack containers, tarps, flammable materials storage lockers, bermed or containment areas, indoor or covered storage areas, fiber rolls, wooden pallets, spill kits, brooms, and drums.		
<b>AUTHORIZED LOCATIONS FOR THE OUTDOOR STORAGE OF SIGNIFICANT MATERIALS:</b>		
<input type="checkbox"/>	To implement BMPs for the prevention of discharges of pollutants from outdoor storage areas, store significant materials at the designated storage areas as shown in the attached map.	
Date:		Version: 2.0

**Appendix B - Best Management Practices**

Intentionally Left Blank

**Tenants Implementing SC-07 BMP:  
Outdoor Material Storage**

- |                       |               |               |                |                  |                      |               |                 |             |
|-----------------------|---------------|---------------|----------------|------------------|----------------------|---------------|-----------------|-------------|
| 1 - Alaska            | 7 - Menzies   | 14 - Hawaiian | 19 - SDCRAA    | 24 - UPS         | 29 - West Jet        | 40 - Bradford | 77 - Conrac     | 106 - ASB   |
| 2 - Menzies Fuel Farm | 10 - Delta    | 15 - HMS Host | 21 - Southwest | 26 - Allegiant   | 35 - Spirit          | 42 - JAL      | 78 - Signature  | 107 - SANCO |
| 4 - American          | 12 - FedEx    | 16 - JetBlue  | 22 - FlagShip  | 27 - Air Canada  | 37 - British Airways | 45 - SSP      | 96 - Cartwright | 108 - ABM   |
| 6 - ARFF              | 13 - Frontier | 18 - ACE      | 23 - United    | 28 - Sun Country | 38 - DHL             | 50 - Siemens  | 102 - SP Plus   |             |

- |              |                  |               |             |                          |
|--------------|------------------|---------------|-------------|--------------------------|
| Fuel Storage | Material Storage | Metal Storage | Oil Storage | Underground Storage Tank |
| SDCRAA       | SDIA Boundary    |               |             |                          |



Service Layer Credits: Source: Esri, Maxar, GeoEye, Earthstar

<p>PROJECT NO.: 5025-18-2002</p> <p>DATE: JANUARY 2022</p> <p>DRAWN BY: CAB</p> <p>CHECKED BY: AA/NP</p>		<p>0 250 500 1,000 1,500 Feet</p>		<p><b>STORM WATER MANAGEMENT PLAN AT SAN DIEGO INTERNATIONAL AIRPORT</b> San Diego, California</p>	<p><b>SC-07 BMP: Outdoor Material Storage</b></p>	<p>FIGURE SC-07</p>
--	--	---------------------------------------	--	--	---	-------------------------



**Appendix B – Best Management Practices**

<b>BMP SC08</b>		<b>WASTE HANDLING AND DISPOSAL</b>	
<p><b>PURPOSE:</b> Prevent or reduce the discharge of pollutants to storm water from waste handling, storage and disposal by through source reduction, re-use, and recycling; and preventing run-on and runoff from waste management areas, including waste/garbage collection areas.</p>		<p><b>TARGETED ACTIVITIES:</b></p> <ul style="list-style-type: none"> <li>➔ Fuel/Chemical/Oil Waste Storage</li> <li>➔ Painting/Stripping</li> <li>➔ Waste/Garbage Collection</li> </ul>	
<p><b>POLLUTION PREVENTION:</b></p>		<p><b>POLLUTANTS of CONCERN:</b></p>	
<p><input type="checkbox"/> Implement the following pollution prevention practices and BMPs to prevent discharges of pollutants from waste handling, storage and disposal to the storm water collection system:</p>	<p><input type="checkbox"/> Inspect on a regular basis waste/garbage collection area for spills and waste/garbage management containers for leaks.</p> <p><input type="checkbox"/> Enclose or berm waste/garbage storage areas, if possible, to prevent contact with storm water run-on and run-off.</p> <p><input type="checkbox"/> Place adequate spill kits in appropriate locations.</p> <p><input type="checkbox"/> Engage in waste reduction programs (e.g. recycling and food waste composting). Investigate new processes and techniques to turn waste into a resource for others in order to reduce the impact people have on the environment.</p>	<ul style="list-style-type: none"> <li>➔ Oil and Grease</li> <li>➔ Paints</li> <li>➔ Solvents/Cleaning Solutions</li> <li>➔ Trash and Debris</li> <li>➔ Vehicle Fluids</li> </ul>	
<p><b>OPERATIONS:</b></p>		<p><b>APPLICABLE TENANTS/ DEPARTMENTS:</b></p>	
<p><b>Sub-BMPs</b></p> <p>- 01 <input type="checkbox"/> Reduce the amount of waste generated (e.g., use only amount needed, use solvents more than once, practice good inventory control, do not over-buying, purchase long-lasting products, etc.).</p> <p>- 02 <input type="checkbox"/> Recycle materials whenever possible.</p> <p>- 03 <input type="checkbox"/> Designate waste/recycling areas with restrict access.</p> <p>- 04 <input type="checkbox"/> Do not locate waste/recycling areas directly in the path of storm drains.</p> <p>- 05 <input type="checkbox"/> Provide secondary containment and cover for wastes.</p> <p>- 06 <input type="checkbox"/> Wastes that are not contained or covered are prevented from contacting storm water and run-on and run-off by the use of berms.</p> <p>- 07 <input type="checkbox"/> All dumpsters are covered and kept closed and any drain holes plugged.</p> <p>- 08 <input type="checkbox"/> Inspect on a frequent basis all waste collection and storage containers for evidence of leaks, spills, compromised structural integrity, and proper closure seal.</p> <p>- 09 <input type="checkbox"/> Train all employees in the proper handling and disposal of waste materials.</p>	<ul style="list-style-type: none"> <li>➔ ABM</li> <li>➔ ACE</li> <li>➔ Air Canada</li> <li>➔ Alaska</li> <li>➔ Allegiant</li> <li>➔ American Airlines</li> <li>➔ ARFF</li> <li>➔ Bradford</li> <li>➔ British Airways</li> <li>➔ Cartwright</li> <li>➔ Conrac</li> <li>➔ Delta</li> <li>➔ DHL</li> <li>➔ FedEx</li> <li>➔ Flagship</li> <li>➔ Frontier</li> <li>➔ Hawaiian</li> <li>➔ HFF</li> <li>➔ HMS Host</li> <li>➔ JAL</li> <li>➔ JetBlue</li> <li>➔ Kirschcohn</li> <li>➔ Lufthansa</li> <li>➔ Menzies</li> </ul>		

**Appendix B – Best Management Practices**

<b>BMP SC08</b>	<b>WASTE HANDLING AND DISPOSAL</b>	
<p>- 10 <input type="checkbox"/> Store wastes and recyclable materials in appropriate containers and segregate and properly labeled them.</p> <p>- 11 <input type="checkbox"/> Wastes are properly characterized and disposed.</p> <p>- 12 <input type="checkbox"/> Prevent overflow of waste containers by timely pickup/service and removal.</p> <p>- 13 <input type="checkbox"/> Perform dumpster cleaning in designated areas that are bermed to contain wash water. Properly dispose of all fluids collected or discharge to the sanitary sewer.</p> <p>- 14 <input type="checkbox"/> Track waste generated, stored, and disposed.</p>		<ul style="list-style-type: none"> <li>➔ Menzies Fuel Farm</li> <li>➔ Mission Yogurt</li> <li>➔ Port of San Diego</li> <li>➔ SANCO</li> <li>➔ SDCRAA</li> <li>➔ Siemens</li> <li>➔ Signature</li> <li>➔ Southwest</li> <li>➔ SP Plus</li> <li>➔ Spirit</li> <li>➔ SSP</li> <li>➔ Sun Country</li> <li>➔ Swoop Airlines</li> <li>➔ United</li> <li>➔ UPS</li> <li>➔ WestJet</li> </ul>
<p><b>STRUCTURAL TREATMENT BMPs:</b> Refer to BMP TC01 for information on structural treatment BMPs.</p>		
<p><b>BMP FREQUENCIES/EQUIPMENT/TOOLS:</b> Waste handling and disposal occurs on a daily basis. Equipment/tools to implement BMPs include spill pallets, outdoor sheds, overpack containers, tarps, bermed or containment areas, sumps and underground tanks, wooden pallets, covered dumpsters, covered storage areas, spill kits, brooms, and drums.</p>		
<p><b>AUTHORIZED LOCATIONS FOR WASTE HANDLING AND DISPOSAL:</b></p>		
<p><input type="checkbox"/></p>	<p>Conduct waste handling and disposal activities in the designated areas as shown in the attached map.</p>	
<p>Date:</p>	<p>Version: 2.0</p>	

**Appendix B - Best Management Practices**

Intentionally Left Blank

**Tenants Implementing SC-08 BMP:  
Waste Handling & Disposal**

- |                       |               |               |                |                  |                      |               |                     |                  |                         |
|-----------------------|---------------|---------------|----------------|------------------|----------------------|---------------|---------------------|------------------|-------------------------|
| 1 - Alaska            | 7 - Menzies   | 14 - Hawaiian | 19 - SDCRAA    | 24 - UPS         | 29 - West Jet        | 40 - Bradford | 47 - Mission Yogurt | 96 - Cartwright  | 106 - ASB               |
| 2 - Menzies Fuel Farm | 10 - Delta    | 15 - HMS Host | 21 - Southwest | 26 - Allegiant   | 35 - Spirit          | 42 - JAL      | 50 - Siemens        | 102 - SP Plus    | 107 - SANCO             |
| 4 - American          | 12 - FedEx    | 16 - JetBlue  | 22 - FlagShip  | 27 - Air Canada  | 37 - British Airways | 45 - SSP      | 77 - Conrac         | 103 - Lufthansa  | 108 - ABM               |
| 6 - ARFF              | 13 - Frontier | 18 - ACE      | 23 - United    | 28 - Sun Country | 38 - DHL             | 46 - HFF      | 78 - Signature      | 105 - Kirschcohn | 113 - Swoop Airlines    |
|                       |               |               |                |                  |                      |               |                     |                  | 114 - Port of San Diego |

- |            |               |             |                  |           |                          |           |
|------------|---------------|-------------|------------------|-----------|--------------------------|-----------|
| Composting | Dumpster      | Grease Trap | Industrial Waste | Recycling | Underground Storage Tank | Wash Area |
| SDCRAA     | SDIA Boundary |             |                  |           |                          |           |



Service Layer Credits: Source: Esri, Maxar, GeoEye, Earthstar

<p>PROJECT NO.: 5025-18-2002</p> <p>DATE: JANUARY 2022</p> <p>DRAWN BY: CAB</p> <p>CHECKED BY: AA/NP</p>		<p>Feet</p>		<p><b>STORM WATER MANAGEMENT PLAN AT SAN DIEGO INTERNATIONAL AIRPORT</b></p> <p>San Diego, California</p>	<p><b>SC-08 BMP: Waste Handling &amp; Disposal</b></p>	<p>FIGURE SC-08</p>
--	--	-------------	--	---	--	-------------------------

**Appendix B – Best Management Practices**

<b>BMP SC09</b>	<b>BUILDING AND GROUNDS MAINTENANCE</b>	
	<p><b>PURPOSE:</b> Prevent or reduce the discharge of pollutants to storm water from building and grounds maintenance by washing and cleaning up with as little water as possible, preventing and cleaning up spills immediately, keeping debris from entering storm drains, and maintaining the storm water collection system.</p>	<p><b>TARGETED ACTIVITIES:</b></p> <ul style="list-style-type: none"> <li>➔ Building Maintenance</li> <li>➔ Grounds Maintenance</li> </ul>
	<p><b>POLLUTION PREVENTION:</b></p>	
	<p>Implement the following pollution prevention practices and BMPs to prevent discharges of pollutants from building and grounds maintenance to the storm water collection system:</p> <ul style="list-style-type: none"> <li><input type="checkbox"/> Regularly clean paved surfaces that are exposed to industrial activity. Use “dry” cleaning techniques, such as sweeping, whenever possible.</li> <li><input type="checkbox"/> Clean any catch basins that receive runoff from maintenance areas on a regular basis. Use a vacuum truck to remove accumulated materials. Do not flush wastes into the storm drain system.</li> <li><input type="checkbox"/> Minimize use of pesticides, herbicides, and fertilizers and use according to directions. Seek less harmful/toxic products to replace ones currently used.</li> <li><input type="checkbox"/> Reduce the exposure of galvanized metal structures to rainfall. Possible actions to reduce exposure include application of a coating of inert paint to the metal surface, replace uncoated galvanized metal fence with vinyl coated galvanized steel or polyester coated galvanized steel.</li> <li><input type="checkbox"/> Investigate the use of downspout filters on roof downspouts to minimize pollutants in roof runoff.</li> <li><input type="checkbox"/> Use safer non-toxic products for the outside painting of buildings and grounds maintenance. Recycle residual paints, solvents, lumber, and other materials (such as landscape waste) as much as possible.</li> <li><input type="checkbox"/> Reduce the exposure of galvanized metal structures to rainfall, by using coated galvanized structures or coating or painting existing structures with non-toxic paints or coatings.</li> <li><input type="checkbox"/> Encourage proper xeriscaping management and landscaping, including the use of native vegetation, to reduce irrigation needs.</li> <li><input type="checkbox"/> When applying pesticides, use the following practices: Do not use pesticides if rain is expected or is occurring, do not mix or prepare pesticides for application near storm drains, and apply pesticides only when wind speed is low.</li> <li><input type="checkbox"/> Prohibit over-irrigation of landscaped areas</li> </ul>	<p><b>POLLUTANTS of CONCERN:</b></p> <ul style="list-style-type: none"> <li>➔ Pesticides/Herbicides/ Fertilizers</li> <li>➔ Oil and Grease</li> <li>➔ Sediment</li> <li>➔ Landscape Waste</li> <li>➔ Metals</li> <li>➔ Cleaning Solutions</li> <li>➔ Bacteria</li> </ul>

**Appendix B – Best Management Practices**

<b>BMP SC09</b>		<b>BUILDING AND GROUNDS MAINTENANCE</b>	
<b>OPERATIONS:</b>		<b>APPLICABLE TENANTS/ DEPARTMENTS:</b>	
<p><b>Sub-BMPs</b></p> <p>- 01 <input type="checkbox"/> Landscape, re-vegetate, or install erosion and sediment controls in areas of exposed soil.</p> <p>- 02 <input type="checkbox"/> Use hand weeding when practical.</p> <p>- 03 <input type="checkbox"/> Implement integrated pest management methods, minimize the use of pesticides, herbicides, and fertilizers, and use according to directions.</p> <p>- 04 <input type="checkbox"/> Use temporary BMPs such as portable booms and vacuum trucks to contain water from outdoor building or structure washdown activities. Use reclaimed water, where possible, and collect and properly dispose of all wastewater through a permitted connection to the sanitary sewer.</p> <p>- 05 <input type="checkbox"/> Compost or recycle grass trimmings, leaves, sticks, or other collected vegetation, where possible, or dispose of appropriately.</p> <p>- 06 <input type="checkbox"/> Remove temporary stockpiled materials at the end of the day or place away from watercourses and drainage inlets, and berm and cover stockpiles to prevent material releases to the storm drain.</p> <p>- 07 <input type="checkbox"/> Clean pavement or sidewalk (using dry methods or reclaimed water) of any residual materials or spills before applying irrigation water, and capture and properly dispose of any wash water.</p> <p>- 08 <input type="checkbox"/> Repair damaged asphalt when degradation is observed.</p> <p>- 09 <input type="checkbox"/> Reduce the exposure of galvanized or rusty metal structures to rainfall, where possible.</p> <p align="center"><b>SEE ALSO BMP SC12</b></p>	<p>→ American</p> <p>→ ARFF</p> <p>→ Bradford</p> <p>→ Cartwright</p> <p>→ Conrac</p> <p>→ DHL</p> <p>→ FedEx</p> <p>→ Flagship</p> <p>→ Menzies</p> <p>→ Menzies Fuel Farm</p> <p>→ SANCO</p> <p>→ SDCRAA</p> <p>→ Siemens</p> <p>→ Signature</p> <p>→ Southwest</p> <p>→ UPS</p>		
<b>STRUCTURAL TREATMENT BMPs:</b> Refer to BMP TC01 for information on structural treatment BMPs.			
<b>BMP FREQUENCIES/EQUIPMENT/TOOLS:</b> Building and grounds maintenance occurs on a daily basis. Equipment/tools to implement BMPs include portable booms, vacuum trucks, tarps, and fiber rolls.			
<b>AUTHORIZED BUILDING AND GROUNDS MAINTENANCE LOCATIONS:</b>			
<input type="checkbox"/>	To implement BMPs for the prevention of discharges or pollutants from buildings and grounds maintenance, perform maintenance activities within the designated areas as shown in the attached map.		
Date:		Version: 2.0	

**Appendix B - Best Management Practices**

Intentionally Left Blank

**Tenants Implementing SC-09 BMP:  
Building & Ground Maintenance**

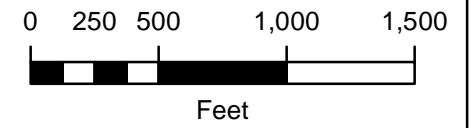
2 - Menzies Fuel Farm    6 - ARFF    12 - FedEx    21 - Southwest    24 - UPS    40 - Bradford    77 - Conrac    96 - Cartwright  
 4 - American    7 - Menzies    19 - SDCRAA    22 - FlagShip    38 - DHL    50 - Siemens    78 - Signature    106 - ASB  
 107 - SANCO

- Building/Roofed Structure
- SDCRAA     SDIA Boundary



Service Layer Credits: Source: Esri, Maxar, GeoEye, Earthstar

PROJECT NO.:  
5025-18-2002  
 DATE:  
JANUARY 2022  
 DRAWN BY:  
CAB  
 CHECKED BY:  
AA/NP



**STORM WATER MANAGEMENT PLAN  
AT SAN DIEGO INTERNATIONAL AIRPORT**  
San Diego, California

**SC-09 BMP:  
Building & Ground Maintenance**

FIGURE  
SC-09



**Appendix B – Best Management Practices**

<b>BMP SC10</b>		<b>EMPLOYEE TRAINING</b>	
<p><b>PURPOSE:</b> Prevent or reduce the discharge of pollutants to storm water from activities through implementing an education program targeting employees, tenants, vendors, contractors, and the public.</p>		<p><b>TARGETED ACTIVITIES:</b></p> <ul style="list-style-type: none"> <li>➔ All Maintenance</li> <li>➔ All Fueling</li> <li>➔ All Washing</li> <li>➔ Equipment Cleaning</li> <li>➔ Cargo Handling</li> <li>➔ All Storage</li> <li>➔ Painting/Stripping</li> <li>➔ Floor Washdowns</li> <li>➔ Aircraft Deicing/Anti-Icing</li> <li>➔ Garbage Collection</li> <li>➔ Aircraft Lavatory Service</li> <li>➔ Fire Fighting Equipment Testing</li> <li>➔ Potable Water System Flush</li> <li>➔ Runway Rubber Removal</li> </ul>	
<p><b>POLLUTION PREVENTION:</b></p>		<p><b>POLLUTANTS of CONCERN:</b></p>	
<p><input type="checkbox"/> Implement an annual storm water pollution prevention education program for employees, tenants, contractors, and the public that cover storm water issues, BMPs, spill cleanup, hazardous materials management, right-to-know awareness, and SWPPP implementation.</p> <p><input type="checkbox"/> Provide adequate implementation training for facilities with a Spill Prevention Control and Countermeasure (SPCC) Plan.</p> <p><input type="checkbox"/> Adequately train employees in the use of spill response equipment and materials.</p> <p><input type="checkbox"/> Train construction contractors on the regulations prohibiting cross connections between sanitary sewers and storm drains.</p>	<p>Implement the following pollution prevention practices and BMPs to prevent non-storm water discharges to the storm water collection system:</p>	<ul style="list-style-type: none"> <li>➔ Oil and Grease</li> <li>➔ Vehicle Fluids</li> <li>➔ Fuel</li> <li>➔ Solvents/Cleaning Solutions</li> <li>➔ Deicing/Anti-Icing</li> <li>➔ Battery Acid</li> <li>➔ Pesticides/Herbicides/ Fertilizers</li> <li>➔ Paint</li> <li>➔ Aircraft Fire Fighting Foam</li> <li>➔ Metals</li> <li>➔ Dumpster Wastes</li> <li>➔ Sediment</li> <li>➔ Landscape Waste\</li> <li>➔ Floatables</li> <li>➔ Lavatory Chemical Wastes</li> <li>➔ Potable Water System Chemicals</li> <li>➔ Rubber Particles</li> </ul>	
<p><b>OPERATIONS:</b></p>		<p><b>APPLICABLE TENANTS/ DEPARTMENTS:</b></p>	
<p><b>Sub-BMPs</b></p> <p>- 01 <input type="checkbox"/> Update the Authority SWMP and tenant SWPPPs covering the facility or operation on a periodic basis and complete and insert the amendment pages for the SWMP or SWPPP, as needed.</p> <p>- 02 <input type="checkbox"/> Train Authority and tenant employees and contractors in storm water pollution prevention education covering all storm water issues, implementation and effectiveness of BMPs, spill prevention and cleanup, hazardous materials management, right-to-know awareness, and SWMP or SWPPP implementation.</p> <p>- 03 <input type="checkbox"/> Implement additional training programs for relevant Authority and</p>	<p>Update the Authority SWMP and tenant SWPPPs covering the facility or operation on a periodic basis and complete and insert the amendment pages for the SWMP or SWPPP, as needed.</p> <p>Train Authority and tenant employees and contractors in storm water pollution prevention education covering all storm water issues, implementation and effectiveness of BMPs, spill prevention and cleanup, hazardous materials management, right-to-know awareness, and SWMP or SWPPP implementation.</p> <p>Implement additional training programs for relevant Authority and</p>	<ul style="list-style-type: none"> <li>➔ ABM</li> <li>➔ ACE</li> <li>➔ Air Canada</li> <li>➔ Alaska</li> <li>➔ Allegiant</li> <li>➔ American Airlines</li> <li>➔ ARFF</li> <li>➔ Avis</li> <li>➔ Bradford</li> <li>➔ British Airways</li> </ul>	

**Appendix B – Best Management Practices**

<b>BMP SC10</b>	<b>EMPLOYEE TRAINING</b>	
<p>- 04 <input type="checkbox"/></p>	<p>tenant employees and contractors covering any Spill Plan implementation, the prohibition on cross-connections between sanitary sewers and storm drains, and contractor responsibility to comply with adopted BMPs.</p> <p>Maintain training records for 5 years of current employees that have participated in the storm water pollution prevention education program and other related training programs.</p>	<ul style="list-style-type: none"> <li>→ Cartwright</li> <li>→ Conrac</li> <li>→ Delta</li> <li>→ DHL</li> <li>→ FedEx</li> <li>→ Flagship</li> <li>→ Frontier</li> <li>→ Hawaiian</li> <li>→ HFF</li> <li>→ HMS Host</li> <li>→ JAL</li> <li>→ JetBlue</li> <li>→ Kirschcohn</li> <li>→ Lufthansa</li> <li>→ Menzies</li> <li>→ Menzies Fuel Farm</li> <li>→ Mission Yogurt</li> <li>→ Port of San Diego</li> <li>→ SANCO</li> <li>→ SDCRAA</li> <li>→ Siemens</li> <li>→ Signature</li> <li>→ Southwest</li> <li>→ SP Plus</li> <li>→ Spirit</li> <li>→ SSP</li> <li>→ Sun Country</li> <li>→ Swoop Airlines</li> <li>→ United</li> <li>→ UPS</li> <li>→ WestJet</li> </ul>
<p><b>STRUCTURAL TREATMENT BMPs:</b> Refer to BMP TC01 for information on structural treatment BMPs.</p>		
<p><b>BMP FREQUENCIES/EQUIPMENT/TOOLS:</b> Training frequencies and tools are described in Sections 7.0 and 9.0.</p>		
<p><b>AUTHORIZED LOCATIONS TO IMPLEMENT BMPs TO PREVENT NON-STORM WATER DISCHARGES:</b></p>		
<p><input type="checkbox"/></p>	<p>To implement BMPs for the prevention of non-storm water discharges, put into practice all lessons learnt from training in the designated areas as shown in the attached map.</p>	
<p>Date:</p>		

**Appendix B - Best Management Practices**

Intentionally Left Blank

**Tenants Implementing SC-10 BMP:  
Employee Training**

- |                       |               |                |                  |                      |                     |                 |                  |                         |
|-----------------------|---------------|----------------|------------------|----------------------|---------------------|-----------------|------------------|-------------------------|
| 1 - Alaska            | 10 - Delta    | 16 - JetBlue   | 23 - United      | 29 - West Jet        | 42 - JAL            | 77 - Conrac     | 105 - Kirschcohn | 113 - Swoop Airlines    |
| 2 - Menzies Fuel Farm | 12 - FedEx    | 18 - ACE       | 24 - UPS         | 35 - Spirit          | 45 - SSP            | 78 - Signature  | 106 - ASB        | 114 - Port of San Diego |
| 4 - American          | 13 - Frontier | 19 - SDCRAA    | 26 - Allegiant   | 37 - British Airways | 46 - HFF            | 96 - Cartwright | 107 - SANCO      |                         |
| 6 - ARFF              | 14 - Hawaiian | 21 - Southwest | 27 - Air Canada  | 38 - DHL             | 47 - Mission Yogurt | 102 - SP Plus   | 108 - ABM        |                         |
| 7 - Menzies           | 15 - HMS Host | 22 - FlagShip  | 28 - Sun Country | 40 - Bradford        | 50 - Siemens        | 103 - Lufthansa | 111 - AVIS       |                         |

SDCRAA SDIA Boundary



Service Layer Credits: Source: Esri, Maxar, GeoEye, Earthstar

**Appendix B – Best Management Practices**

<b>BMP SC11</b>		<b>LAVATORY SERVICE OPERATION</b>	
<b>PURPOSE:</b> Eliminate discharges to the storm drain system associated with ground servicing of aircraft lavatory facilities.		<b>TARGETED ACTIVITIES:</b> → Aircraft Lavatory Service → Lavatory Truck/Cleanout Backflushing	
<b>POLLUTION PREVENTION:</b>		<b>POLLUTANTS of CONCERN:</b>	
<input type="checkbox"/>	Implement the following pollution prevention practices and BMPs to prevent discharges to the storm drain system associated with ground servicing of aircraft lavatory facilities:  <input type="checkbox"/> Use only surfactants and disinfectants approved for discharge to the sanitary sewer system.	→ Lavatory Chemicals → Lavatory Waste → Lavatory Truck Wash Water	
<b>OPERATIONS:</b>		<b>APPLICABLE TENANTS/ DEPARTMENTS:</b>	
<b>Sub-BMPs</b>			
- 01 <input type="checkbox"/>	Triturator facilities are covered and have low roll-over type berming.	→ ACE → Air Canada → Alaska → Allegiant → American Airlines → Avis → British Airways → Delta → DHL → Edelweiss → Frontier → Hawaiian → JAL → JetBlue → Lufthansa → SANCO → SDCRAA → Signature → Southwest → Spirit → Sun Country → Swoop Airlines → United → UPS → WestJet	
- 02 <input type="checkbox"/>	Triturator facilities should not be located directly in the path of storm drains.		
- 03 <input type="checkbox"/>	Perform regular inspections of all hoses and fittings used for transferring lavatory waste and keep the equipment in good condition.		
- 04 <input type="checkbox"/>	Absorbent booms, spill kits and other containment equipment are present on lavatory service equipment and at the triturator facility.		
- 05 <input type="checkbox"/>	Perform all mixing and transfers of surfactants and disinfectants within the covered and bermed triturator area or under a cover.		
- 06 <input type="checkbox"/>	Use drip pans when draining aircraft lavatory systems. Immediately dump the collected drippage into the bulk storage tank on the lavatory service cart or lavatory service truck.		
- 07 <input type="checkbox"/>	Immediately clean and properly dispose of all spills of lavatory wastes and lavatory chemicals at the triturator facility.		
- 08 <input type="checkbox"/>	Secure all hoses, valves, and equipment when transporting lavatory waste.		
- 09 <input type="checkbox"/>	Perform lavatory truck cleanouts/backflushing and lavatory waste discharging to sanitary sewer connections ONLY at triturator facilities.		
- 10 <input type="checkbox"/>	Completely drain all hoses.		
- 11 <input type="checkbox"/>	Use lavatory service cart or truck with spill prevention equipment installed, where possible.		

**Appendix B – Best Management Practices**

<b>BMP SC11</b>	<b>LAVATORY SERVICE OPERATION</b>	
<p>- 12 <input type="checkbox"/></p> <p>- 13 <input type="checkbox"/></p>	<p>Temporary sanitary facilities must have secondary containment and be located away from watercourses, drainage facilities, traffic circulation and high wind areas.</p> <p>Regularly inspect temporary sanitary facilities for leaks and spills and clean or replace when necessary.</p>	
<p><b>STRUCTURAL TREATMENT BMPs:</b> Refer to BMP TC01 for information on structural treatment BMPs.</p>		
<p><b>BMP FREQUENCIES/EQUIPMENT/TOOLS:</b> Lavatory service operations occur on a daily basis. Equipment/tools to implement BMPs include secondary containment, bermed areas, overhead cover at triturator, drip pans, spill kits, and drums.</p>		
<p><b>AUTHORIZED LOCATIONS FOR LAVATORY SERVICE OPERATIONS:</b></p>		
<p><input type="checkbox"/></p>	<p>Use only the designated areas for ground servicing of aircraft lavatory facilities as shown in the attached map.</p>	
<p>Date:</p>		<p>Version: 2.0</p>

**Appendix B - Best Management Practices**

Intentionally Left Blank

**Tenants Implementing SC-11 BMP:  
Lavatory Service Operation**

- |              |               |                |                |                  |                      |                 |                 |                      |
|--------------|---------------|----------------|----------------|------------------|----------------------|-----------------|-----------------|----------------------|
| 1 - Alaska   | 13 - Frontier | 18 - ACE       | 23 - United    | 27 - Air Canada  | 35 - Spirit          | 42 - JAL        | 103 - Lufthansa | 111 - AVIS           |
| 4 - American | 14 - Hawaiian | 19 - SDCRAA    | 24 - UPS       | 28 - Sun Country | 37 - British Airways | 78 - Signature  | 106 - ASB       | 113 - Swoop Airlines |
| 10 - Delta   | 16 - JetBlue  | 21 - Southwest | 26 - Allegiant | 29 - West Jet    | 38 - DHL             | 100 - Edelweiss | 107 - SANCO     |                      |

-  Portable Toilet
-  SDCRAA
-  SDIA Boundary



Service Layer Credits: Source: Esri, Maxar, GeoEye, Earthstar



**Appendix B – Best Management Practices**

<b>BMP SC12</b>		<b>OUTDOOR WASHDOWN/SWEEPING (APRON WASHING, RAMP SCRUBBING)</b>	
<p><b>PURPOSE:</b> Prevent or reduce the discharge of pollutants to storm water from outdoor washdown and sweeping operations.</p>		<p><b>TARGETED ACTIVITIES:</b></p> <ul style="list-style-type: none"> <li>→ Apron Washing</li> <li>→ Ramp Scrubbing</li> <li>→ Outdoor Washdown</li> <li>→ Road Sweeping</li> <li>→ Ramp Sweeping</li> </ul>	
<p><b>POLLUTION PREVENTION:</b></p>		<p><b>POLLUTANTS of CONCERN:</b></p> <ul style="list-style-type: none"> <li>→ Oil and Grease</li> <li>→ Solvents/Cleaning Solutions</li> <li>→ Fuel</li> <li>→ Aircraft Fire Fighting Foam</li> <li>→ Deicing/Anti-Icing Fluids</li> <li>→ Sediment</li> <li>→ Floatables</li> </ul>	
<ul style="list-style-type: none"> <li><input type="checkbox"/> Use biodegradable or non-toxic cleaning products for outdoor washdown activities.</li> <li><input type="checkbox"/> Investigate newer sweeping technologies such as high-efficiency sweepers or the CASQA-recommended regenerative air and vacuum-assisted dry sweepers.</li> <li><input type="checkbox"/> Investigate non-potable or alternative sources of water when performing outdoor washdowns. Reuse water as much as possible before disposing it.</li> <li><input type="checkbox"/> Follow water conservation practices when performing washdowns.</li> <li><input type="checkbox"/> <b>DO NOT DISCHARGE WASH WATER TO A STORM DRAIN.</b> Notify Airport Operations (619-400-2710) and the Airport Authority Planning &amp; Environmental Affairs Department (619-400-2784) if any discharges associated with outdoor washdowns have occurred.</li> </ul>	<p>Implement the following pollution prevention practices and BMPs to prevent non-storm water discharges of pollutants from outdoor washdown and sweeping operations to the storm water collection system:</p>		
<p><b>OPERATIONS:</b></p>		<p><b>APPLICABLE TENANTS/ DEPARTMENTS:</b></p>	
<ul style="list-style-type: none"> <li>Sub-BMPs</li> <li>- 01 <input type="checkbox"/></li> <li>- 02 <input type="checkbox"/></li> <li>- 03 <input type="checkbox"/></li> <li>- 04 <input type="checkbox"/></li> <li>- 05 <input type="checkbox"/></li> <li>- 06 <input type="checkbox"/></li> </ul>	<ul style="list-style-type: none"> <li>Inspect and maintain sweeping and scrubbing equipment regularly to ensure effectiveness at removing pollutants and to avoid leaks.</li> <li>Roads, ramp areas, apron areas, and, if feasible, runway/taxiway areas are swept on a regular basis.</li> <li>Perform sweeping during dry weather using dry sweeping techniques where feasible.</li> <li>Operate sweepers at manufacturer-recommended optimal speeds.</li> <li>Properly dispose of debris and sediment from sweeping.</li> <li>Berm outdoor washdown areas to contain the wash water and to prevent run-on to adjacent areas.</li> </ul>	<ul style="list-style-type: none"> <li>→ ABM</li> <li>→ ACE</li> <li>→ Alaska</li> <li>→ American Airlines</li> <li>→ Conrac</li> <li>→ Delta</li> <li>→ DHL</li> <li>→ FedEx</li> <li>→ Flagship</li> <li>→ Frontier</li> <li>→ Hawaiian</li> <li>→ JAL</li> <li>→ JetBlue</li> <li>→ Kirschcohn</li> <li>→ Lufthansa</li> </ul>	

**Appendix B – Best Management Practices**


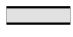
<b>BMP SC12</b>	<b>OUTDOOR WASHDOWN/SWEEPING (APRON WASHING, RAMP SCRUBBING)</b>	
<p>- 07 <input type="checkbox"/></p> <p>- 08 <input type="checkbox"/></p> <p>- 09 <input type="checkbox"/></p> <p>- 10 <input type="checkbox"/></p> <p>- 11 <input type="checkbox"/></p> <p>- 12 <input type="checkbox"/></p>	<p>Minimize the amount of water used during outdoor washdown activities.</p> <p>Wash water is collected and filtered and reused, or discharged to the sanitary sewer system through a permitted connection at designated and approved discharge facilities (i.e., dewatering bin).</p> <p>Maintain records of the sweeping or scrubbing activities including the miles swept or scrubbed and the amount of waste collected.</p> <p>Do not use a running hose to wash down sidewalks, or other hard surface areas. A water-efficient, filtering and recycling device must be used and all wash water must be prevented from entering the storm drain system (curb gutters, streets, alleys, and inlets).</p> <p>Use reclaimed or recycled/filtered water.</p> <p>Roads, ramp areas, and apron areas are scrubbed on an as-needed basis.</p>	<p>→ Menzies</p> <p>→ Menzies Fuel Farm</p> <p>→ SANCO</p> <p>→ SDCRAA</p> <p>→ Siemens</p> <p>→ Southwest</p> <p>→ SP Plus</p> <p>→ Spirit</p> <p>→ Siemens</p> <p>→ Sun Country</p> <p>→ United</p> <p>→ UPS</p>
<p><b>STRUCTURAL TREATMENT BMPs:</b> Refer to BMP TC01 for information on structural treatment BMPs.</p>		
<p><b>BMP FREQUENCIES/EQUIPMENT/TOOLS:</b> Outdoor washdown/sweeping occurs on a daily basis. Equipment/tools to implement BMPs include recycling/filtering power washers, ramp scrubbers, mechanical and regenerative air sweepers, booms, containment devices, spill kits, brooms, dumpsters, dewatering bins and drums.</p>		
<p><b>AUTHORIZED LOCATIONS FOR OUTDOOR WASHDOWN AND SWEEPING ACTIVITIES:</b></p>		
<p><input type="checkbox"/></p>	<p>To implement BMPs for the prevention of non-storm water discharges, perform outdoor washdown and sweeping activities in the designated areas as shown on the attached map.</p>	
<p>Date:</p>		<p>Version: 2.0</p>

**Appendix B - Best Management Practices**

Intentionally Left Blank

**Tenants Implementing SC-12 BMP:  
Outdoor Wash Down/Sweeping**

- |                       |             |               |                |               |                  |              |                  |             |
|-----------------------|-------------|---------------|----------------|---------------|------------------|--------------|------------------|-------------|
| 1 - Alaska            | 7 - Menzies | 13 - Frontier | 18 - ACE       | 22 - FlagShip | 28 - Sun Country | 42 - JAL     | 102 - SP Plus    | 107 - SANCO |
| 2 - Menzies Fuel Farm | 10 - Delta  | 14 - Hawaiian | 19 - SDCRAA    | 23 - United   | 35 - Spirit      | 50 - Siemens | 103 - Lufthansa  | 108 - ABM   |
| 4 - American          | 12 - FedEx  | 16 - JetBlue  | 21 - Southwest | 24 - UPS      | 38 - DHL         | 77 - Conrac  | 105 - Kirschcohn |             |

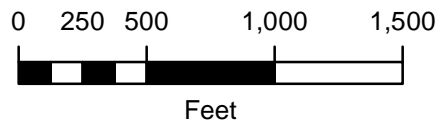
 Ramp Scrubbing  Road Sweeping

 SDCRAA  SDIA Boundary



Service Layer Credits: Source: Esri, Maxar, GeoEye, Earthstar

PROJECT NO.:  
5025-18-2002  
DATE:  
JANUARY 2022  
DRAWN BY:  
CAB  
CHECKED BY:  
AA/NP



**STORM WATER MANAGEMENT PLAN  
AT SAN DIEGO INTERNATIONAL AIRPORT**  
San Diego, California

**SC-12 BMP:  
Outdoor Wash Down/Sweeping**

FIGURE  
SC-12

**Appendix B – Best Management Practices**

<b>BMP SC13</b>		<b>FIRE FIGHTING FOAM DISCHARGE</b>	
<b>PURPOSE:</b> To prevent the discharge of pollutants to storm water associated with flushing or testing of firefighting foam.		<b>TARGETED ACTIVITIES:</b> → Fire Fighting Foam Testing	
<b>POLLUTION PREVENTION:</b>		<b>POLLUTANTS of CONCERN:</b>	
<input type="checkbox"/> Implement the following pollution prevention practices and BMPs to prevent discharges of pollutants from firefighting foam testing entering the storm water collection system:  <input type="checkbox"/> Perform firefighting foam testing during dry weather and in designated areas only.  <input type="checkbox"/> Before performing firefighting foam testing, block off all storm drain inlets within the designated testing area.  <input type="checkbox"/> All discharges should be collected and disposed of properly.  <input type="checkbox"/> <b>DO NOT DISCHARGE AFFF OR WASTEWATER TO A CATCH BASIN OR STORM DRAIN.</b> Notify Airport Operations (619-400-2710) and the Airport Authority Planning & Environmental Affairs Department (619-400-2784) if any discharges of AFFF have occurred.	<input type="checkbox"/> Aircraft Fire Fighting Foam (AFFF)		
<b>OPERATIONS:</b>		<b>APPLICABLE TENANTS/ DEPARTMENTS:</b>	
<b>Sub-BMPs</b> - 01 <input type="checkbox"/> Do not perform firefighting foam testing directly in the path of storm drains.  - 02 <input type="checkbox"/> Inspect and test firefighting equipment on a regular basis.  - 03 <input type="checkbox"/> Perform firefighting foam testing <b>ONLY</b> in a designated area that captures or divers all foam waste to a structural treatment control, sanitary sewer, or dead end sump with pump.  - 04 <input type="checkbox"/> Service sump(s) and/or oil/water separators on a regular basis.  - 05 <input type="checkbox"/> Prevent all designated testing areas from contacting storm water run on and run-off or from reaching storm drains (e.g. by the use of berms and sandbags).	→ ARFF → Menzies Fuel Farm		
<b>STRUCTURAL TREATMENT BMPs:</b> Refer to BMP TC01 for information on structural treatment BMPs.			
<b>BMP FREQUENCIES/EQUIPMENT/TOOLS:</b> Firefighting operation frequencies and tools are described in Section 3.0.			
<b>AUTHORIZED LOCATIONS FOR FIRE FIGHTING FOAM TESTING:</b>			
<input type="checkbox"/> Use only the designated areas for firefighting foam testing as shown in the attached map.			
Date:			Version: 2.0

**Appendix B - Best Management Practices**

Intentionally Left Blank

**Tenants Implementing SC-13 BMP:  
Fire Fighting Foam Discharge**

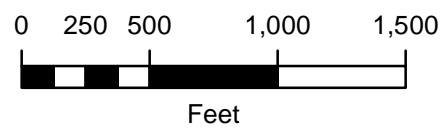
2 - Menzies Fuel Farm 6 - ARFF

 SDIA Boundary



Service Layer Credits: Source: Esri, Maxar, GeoEye, Earthstar

PROJECT NO.: 5025-18-2002  
DATE: JANUARY 2022  
DRAWN BY: CAB  
CHECKED BY: AA/NP



**STORM WATER MANAGEMENT PLAN  
AT SAN DIEGO INTERNATIONAL AIRPORT**  
San Diego, California

**SC-13 BMP:  
Fire Fighting Foam Discharge**

FIGURE  
SC-13

**Appendix B – Best Management Practices**

<b>BMP SC14</b>		<b>POTABLE WATER SYSTEM FLUSHING</b>	
<b>PURPOSE:</b> To prevent the discharge of pollutants to storm water drains associated with flushing and cleaning of aircraft potable water systems.		<b>TARGETED ACTIVITIES:</b> → Aircraft potable water system cleaning and flushing → Water truck cleaning and flushing	
<b>POLLUTION PREVENTION:</b>		<b>POLLUTANTS of CONCERN:</b>	
<input type="checkbox"/> Implement the following pollution prevention practices and BMPs to prevent discharges from potable water system flushing:  <input type="checkbox"/> Perform flushing activities within designated areas that divert the flushed water away from the storm drain system whenever possible.  <input type="checkbox"/> <b>DO NOT DISCHARGE WASTE WATER OR CLEANING AGENTS TO A CATCH BASIN OR STORM DRAIN.</b> Notify Airport Operations (619-400-2710) and the Airport Authority Planning & Environmental Affairs Department (619-400-2784) if any discharges associated with flushing and cleaning of aircraft potable water systems have occurred.	→ Chlorine Bleach → Purine		
<b>OPERATIONS:</b>		<b>APPLICABLE TENANTS/ DEPARTMENTS:</b>	
<b>Sub-BMPs</b> - 01 <input type="checkbox"/> The aircraft potable water system and water truck flushing/cleaning areas should not be located directly in the path of storm drains.  - 02 <input type="checkbox"/> Perform potable water system flushing only in designated flushing/cleaning areas that capture or divert all wastewater away from storm drains, or to a structural treatment control, sanitary sewer, or dead-end sump with pump.  - 03 <input type="checkbox"/> Prevent flushing/cleaning areas from contacting storm water run-on and run-off.	→ Air Canada → Alaska → Allegiant → American Airlines → British Airways → Edelweiss → FedEx → Frontier → Hawaiian → JetBlue → Siemens → Southwest → Spirit → Swoop Airlines → WestJet		
<b>STRUCTURAL TREATMENT BMPs:</b> Refer to BMP TC01 for information on structural treatment BMPs.			
<b>BMP FREQUENCIES/EQUIPMENT/TOOLS:</b> Potable water system flushing frequencies and tools are described in Section 3.0.			
<b>AUTHORIZED LOCATIONS FOR POTABLE WATER SYSTEM FLUSHING/CLEANING:</b>			
<input type="checkbox"/> Use only the designated areas for aircraft potable water system flushing/cleaning as shown in the attached map.			
Date:		Version: 2.0	



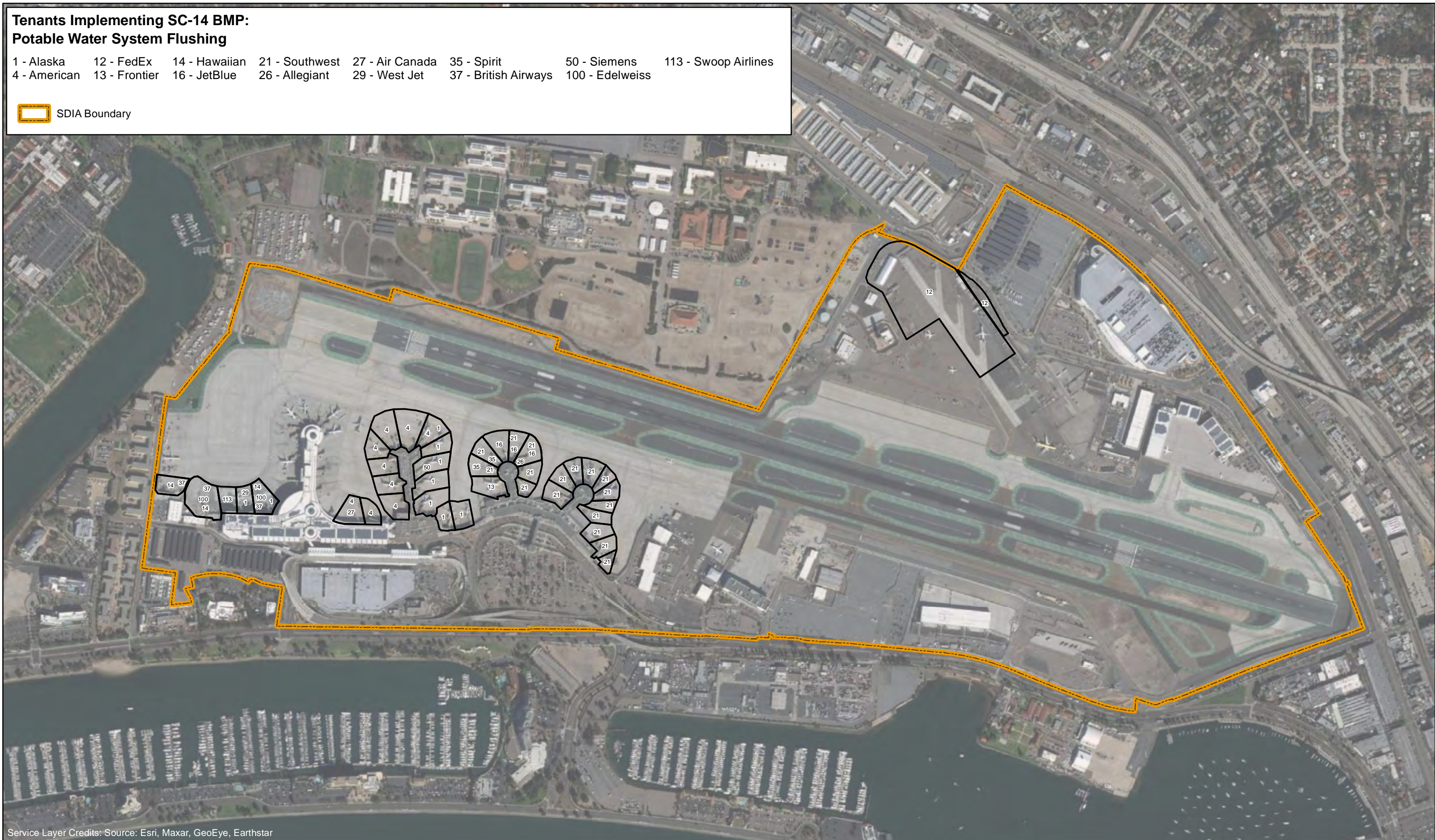
**Appendix B - Best Management Practices**

Intentionally Left Blank

**Tenants Implementing SC-14 BMP:  
Potable Water System Flushing**

- 1 - Alaska    12 - FedEx    14 - Hawaiian    21 - Southwest    27 - Air Canada    35 - Spirit    50 - Siemens    113 - Swoop Airlines
- 4 - American    13 - Frontier    16 - JetBlue    26 - Allegiant    29 - West Jet    37 - British Airways    100 - Edelweiss

SDIA Boundary



Service Layer Credits: Source: Esri, Maxar, GeoEye, Earthstar

<b>PROJECT NO.:</b> 5025-18-2002				<b>STORM WATER MANAGEMENT PLAN AT SAN DIEGO INTERNATIONAL AIRPORT</b> San Diego, California	<b>SC-14 BMP: Potable Water System Flushing</b>	FIGURE SC-14
<b>DATE:</b> JANUARY 2022						
<b>DRAWN BY:</b> CAB						
<b>CHECKED BY:</b> AA/NP						

**Appendix B – Best Management Practices**

<b>BMP SC15</b>		<b>RUNWAY RUBBER REMOVAL</b>	
<b>PURPOSE:</b> Eliminate discharges to the storm drain of particulate rubber and other pollutants generated by runway rubber removal activities.		<b>TARGETED ACTIVITIES:</b> → Runway Rubber Removal	
<b>POLLUTION PREVENTION:</b>		<b>POLLUTANTS of CONCERN:</b>	
<input type="checkbox"/>	Implement the following pollution prevention practices and BMPs to prevent non-storm water discharges of particulate rubber and other pollutants generated by runway rubber removal activities to the storm water collection system:  Use biodegradable or non-toxic cleaning products for runway rubber removal activities.	→ Rubber particles → Dirt particles → Metals	
<b>OPERATIONS:</b>		<b>APPLICABLE TENANTS/ DEPARTMENTS:</b>	
<b>Sub-BMPs</b>		→ SDCRAA	
- 01 <input type="checkbox"/>	Minimize the amount of water used during runway rubber removal activities.		
- 02 <input type="checkbox"/>	Prevent waste water produced from runway rubber removal activities from entering the storm drainage system by immediately collecting and properly disposing of it.		
- 03 <input type="checkbox"/>	Use manual or mechanical cleaning methods such as mechanical street sweepers to remove rubber particulates from the runway and adjacent paved areas following runway rubber removal activities.		
- 04 <input type="checkbox"/>	Inspect storm drain inlets, catch basins, and runway drainage areas following runway rubber removal activities for any resulting debris, and remove and properly dispose of debris.		
- 05 <input type="checkbox"/>	Use reclaimed water, where possible.		
<b>STRUCTURAL TREATMENT BMPs:</b> Refer to BMP TC01 for information on structural treatment BMPs.			
<b>BMP FREQUENCIES/EQUIPMENT/TOOLS:</b> Runway rubber removal frequencies and tools are described in Section 7.0.			
<b>AUTHORIZED LOCATIONS FOR RUNWAY RUBBER REMOVAL ACTIVITIES:</b>			
<input type="checkbox"/>	Perform all runway rubber removal activities in the designated areas as shown in the attached map.		
Date:		Version: 1.0	

**Appendix B - Best Management Practices**

Intentionally Left Blank

**Tenants Implementing SC-15 BMP:  
Runway Rubber Removal**

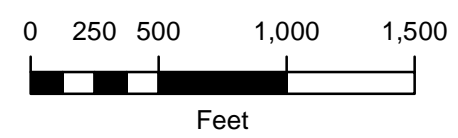
19 - SDCRAA

- Runway
- SDCRAA  SDIA Boundary



Service Layer Credits: Source: Esri, Maxar, GeoEye, Earthstar

PROJECT NO.:  
5025-18-2002  
DATE: JANUARY 2022  
DRAWN BY: CAB  
CHECKED BY: AA/NP



**STORM WATER MANAGEMENT PLAN  
AT SAN DIEGO INTERNATIONAL AIRPORT**  
San Diego, California

**SC-15 BMP:  
Runway Rubber Removal**

FIGURE  
SC-15

**Appendix B – Best Management Practices**

<b>BMP SC16</b>		<b>PARKING LOTS</b>	
<p><b>PURPOSE:</b> Prevent and reduce the discharge of pollutants from parking areas.</p>		<p><b>TARGETED ACTIVITIES:</b></p> <ul style="list-style-type: none"> <li>➔ Vehicle parking</li> <li>➔ Surface cleaning and maintenance</li> <li>➔ Litter control</li> </ul>	
<p><b>POLLUTION PREVENTION:</b></p>		<p><b>POLLUTANTS of CONCERN:</b></p>	
<p><input type="checkbox"/> Implement the following pollution prevention practices and BMPs to prevent non-storm water discharges from parking areas to the storm water collection system:</p>	<p><input type="checkbox"/> Install treatment control BMPs, where practicable, in parking lot areas to treat parking lot runoff.</p> <p><input type="checkbox"/> Design parking lot areas to include semi-permeable hardscape and Low Impact Development practices.</p> <p><input type="checkbox"/> Inspect and maintain sweeping equipment regularly to ensure effectiveness at removing pollutants and to avoid leaks.</p> <p><input type="checkbox"/> Sweep parking lots regularly and before onset of wet season.</p> <p><input type="checkbox"/> Prohibit over-irrigation of landscaped areas</p>	<ul style="list-style-type: none"> <li>➔ Trash</li> <li>➔ Suspended solids</li> <li>➔ Hydrocarbons</li> <li>➔ Oil and grease</li> <li>➔ Heavy Metals</li> <li>➔ Bacteria</li> <li>➔ Sediment</li> <li>➔ Pesticides</li> </ul>	
<p><b>OPERATIONS:</b></p>		<p><b>APPLICABLE TENANTS/ DEPARTMENTS:</b></p>	
<p><b>Sub-BMPs</b></p> <p>- 01 <input type="checkbox"/> Post “No Littering” signs around parking lots and regularly empty trash receptacles. Trash receptacles must be covered.</p> <p>- 02 <input type="checkbox"/> Sweep all parking lot areas on a regular basis to remove accumulated debris and sediment.</p> <p>- 03 <input type="checkbox"/> Operate sweepers at manufacturer-recommended optimal speeds.</p> <p>- 04 <input type="checkbox"/> Perform sweeping in parking lot areas when the number of parked vehicles is lowest to maximize areas swept.</p> <p>- 05 <input type="checkbox"/> Maintain records of the sweeping activities including the miles swept and the amount of waste collected.</p> <p>- 06 <input type="checkbox"/> Clean oily spots from parking lot surfaces with absorbent materials.</p> <p>- 07 <input type="checkbox"/> Perform all repairs to parking lot surfaces during periods of dry weather.</p> <p>- 08 <input type="checkbox"/> Cover and seal nearby storm drain inlets, catch basins, and manholes during parking lot repairs.</p> <p>- 09 <input type="checkbox"/> Use drip pans and absorbent materials to catch and collect drips and leaks from paving equipment that are not in use.</p>	<ul style="list-style-type: none"> <li>➔ ABM</li> <li>➔ ACE</li> <li>➔ ARFF</li> <li>➔ Avis</li> <li>➔ Bradford</li> <li>➔ Conrac</li> <li>➔ Delta</li> <li>➔ DHL</li> <li>➔ FedEx</li> <li>➔ Kirschcohn</li> <li>➔ Menzies</li> <li>➔ Menzies Fuel Farm</li> <li>➔ Port of San Diego</li> <li>➔ SANCO</li> <li>➔ SDCRAA</li> <li>➔ Signature</li> <li>➔ Southwest</li> <li>➔ SP Plus</li> <li>➔ UPS</li> </ul>		

**Appendix B – Best Management Practices**

<b>BMP SC16</b>	<b>PARKING LOTS</b>	
	<ul style="list-style-type: none"> <li>- 10 <input type="checkbox"/> Hot bituminous materials used for parking lot repairs are to be preheated and transferred or loaded away from storm drain inlets.</li> <li>- 11 <input type="checkbox"/> Properly dispose of used absorbent materials, debris, and collected drips.</li> <li>- 12 <input type="checkbox"/> Avoid draining rooftop downspout drains onto paved parking lot surfaces.</li> <li>- 13 <input type="checkbox"/> Sweep, vacuum, or use other dry methods to remove waste materials generated from repairs.</li> <li>- 14 <input type="checkbox"/> Temporarily store waste materials and debris generated from parking lot repairs in containers or in stockpiles with cover and berm around them and away from storm drain inlets.</li> </ul> <p align="center"><b>SEE ALSO BMP SC21</b></p>	
<p><b>STRUCTURAL TREATMENT BMPs:</b> Refer to BMP TC01 for information on structural treatment BMPs.</p>		
<p><b>BMP FREQUENCIES/EQUIPMENT/TOOLS:</b> Sweeping of parking lots occurs five days a week or as described in Section 6.0. Equipment/tools to implement BMPs include mechanical and regenerative air sweepers, drip pans, spill kits, brooms, and drums.</p>		
<p><b>AUTHORIZED LOCATIONS TO IMPLEMENT BMPs FOR PARKING LOTS:</b></p>		
<input type="checkbox"/>	<p>To reduce pollutants in parking lot storm water discharges, implement BMPs in areas as shown in the attached map.</p>	
<p>Date:</p>	<p align="right">Version: 2.0</p>	

**Appendix B - Best Management Practices**

Intentionally Left Blank



**Tenants Implementing SC-16 BMP:  
Parking Lots**

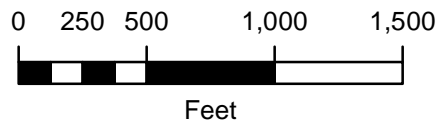
- |                       |                |               |                  |                         |
|-----------------------|----------------|---------------|------------------|-------------------------|
| 2 - Menzies Fuel Farm | 12 - FedEx     | 24 - UPS      | 78 - Signature   | 107 - SANCO             |
| 6 - ARFF              | 18 - ACE       | 38 - DHL      | 102 - SP Plus    | 108 - ABM               |
| 7 - Menzies           | 19 - SDCRAA    | 40 - Bradford | 105 - Kirschcohn | 111 - AVIS              |
| 10 - Delta            | 21 - Southwest | 77 - Conrac   | 106 - ASB        | 114 - Port of San Diego |

SDCRAA SDIA Boundary



Service Layer Credits: Source: Esri, Maxar, GeoEye, Earthstar

PROJECT NO.:	5025-18-2002
DATE:	JANUARY 2022
DRAWN BY:	CAB
CHECKED BY:	AA/NP



**STORM WATER MANAGEMENT PLAN  
AT SAN DIEGO INTERNATIONAL AIRPORT**  
San Diego, California

**SC-16 BMP:  
Parking Lots**

FIGURE  
SC-16

**Appendix B – Best Management Practices**

<b>BMP SC17</b>		<b>STORM DRAIN MAINTENANCE</b>	
<p><b>PURPOSE:</b> Maintain catch basins, storm water inlets, and other storm water conveyance structures on a regular basis to remove pollutants, reduce high pollutant concentrations during the first flush of storms, prevent clogging of the downstream conveyance system, restore catch basins' sediment trapping capacity, and ensure the system functions properly hydraulically to avoid flooding.</p>		<p><b>TARGETED ACTIVITIES:</b></p> <ul style="list-style-type: none"> <li>➔ Storm water conveyance system</li> </ul>	
<p><b>POLLUTION PREVENTION:</b></p>		<p><b>POLLUTANTS of CONCERN:</b></p>	
<p><input type="checkbox"/></p>	<p>Implement the following pollution prevention practices and BMPs to remove pollutants, sediment, and debris from the storm water collection system:</p> <p><input type="checkbox"/> Look for evidence of illegal dumping, illegal discharges or illicit connections during routine inspection, cleaning, and maintenance of the storm drainage system and drainage structures.</p>	<ul style="list-style-type: none"> <li>➔ Trash</li> <li>➔ Suspended solids</li> <li>➔ Hydrocarbons</li> <li>➔ Oil and grease</li> <li>➔ Heavy Metals</li> <li>➔ Bacteria</li> <li>➔ Organics</li> </ul>	
<p><b>OPERATIONS:</b></p>		<p><b>APPLICABLE TENANTS/ DEPARTMENTS:</b></p>	
<p><b>Sub-BMPs</b></p> <ul style="list-style-type: none"> <li>- 01 <input type="checkbox"/> Stencil storm drains with “No Dumping” messages.</li> <li>- 02 <input type="checkbox"/> Conduct routine self-inspections of the storm drainage system. The Authority should inspect the entire MS4 at least annually, between the dates of May 1 and September 30.</li> <li>- 03 <input type="checkbox"/> Use appropriate measures to prevent discharges during MS4 cleaning and maintenance.</li> <li>- 04 <input type="checkbox"/> Clean and maintain storm drain inlets, catch basins, pipes, and other conveyance structures before the wet season and as needed.</li> <li>- 05 <input type="checkbox"/> Clear open channels of accumulated litter in a timely manner.</li> <li>- 06 <input type="checkbox"/> Properly dispose of all accumulated sediments, contaminants, debris and wastewater from cleaning and maintenance activities.</li> <li>- 07 <input type="checkbox"/> Maintain records for all inspections, cleaning, and maintenance, including the quantity of waste removed.</li> </ul>	<ul style="list-style-type: none"> <li>➔ ABM</li> <li>➔ ACE</li> <li>➔ ARFF</li> <li>➔ Avis</li> <li>➔ Cartwright</li> <li>➔ Delta</li> <li>➔ Kirschcohn</li> <li>➔ Menzies Fuel Farm</li> <li>➔ Port of San Diego</li> <li>➔ SANCO</li> <li>➔ SDCRAA</li> <li>➔ Signature</li> <li>➔ SP Plus</li> </ul>		
<p><b>STRUCTURAL TREATMENT BMPs:</b> Refer to BMP TC01 for information on structural treatment BMPs.</p>			
<p><b>BMP FREQUENCIES/EQUIPMENT/TOOLS:</b> Storm drain maintenance frequencies are described in Section 6.0. Equipment/tools to implement BMPs include stenciling equipment, measuring devices, flashlights, vactor trucks, spill kits, brooms, and drums.</p>			

**Appendix B – Best Management Practices**

<b>BMP SC17</b>	<b>STORM DRAIN MAINTENANCE</b>	
<b>AUTHORIZED LOCATIONS FOR STORM DRAIN MAINTENANCE:</b>		
<input type="checkbox"/>	To implement BMPs for the removal of pollutants, sediment, and debris from the storm drain system, maintenance of the storm drain system will be performed at the designated areas as shown on the attached map.	
Date:		Version: 2.0

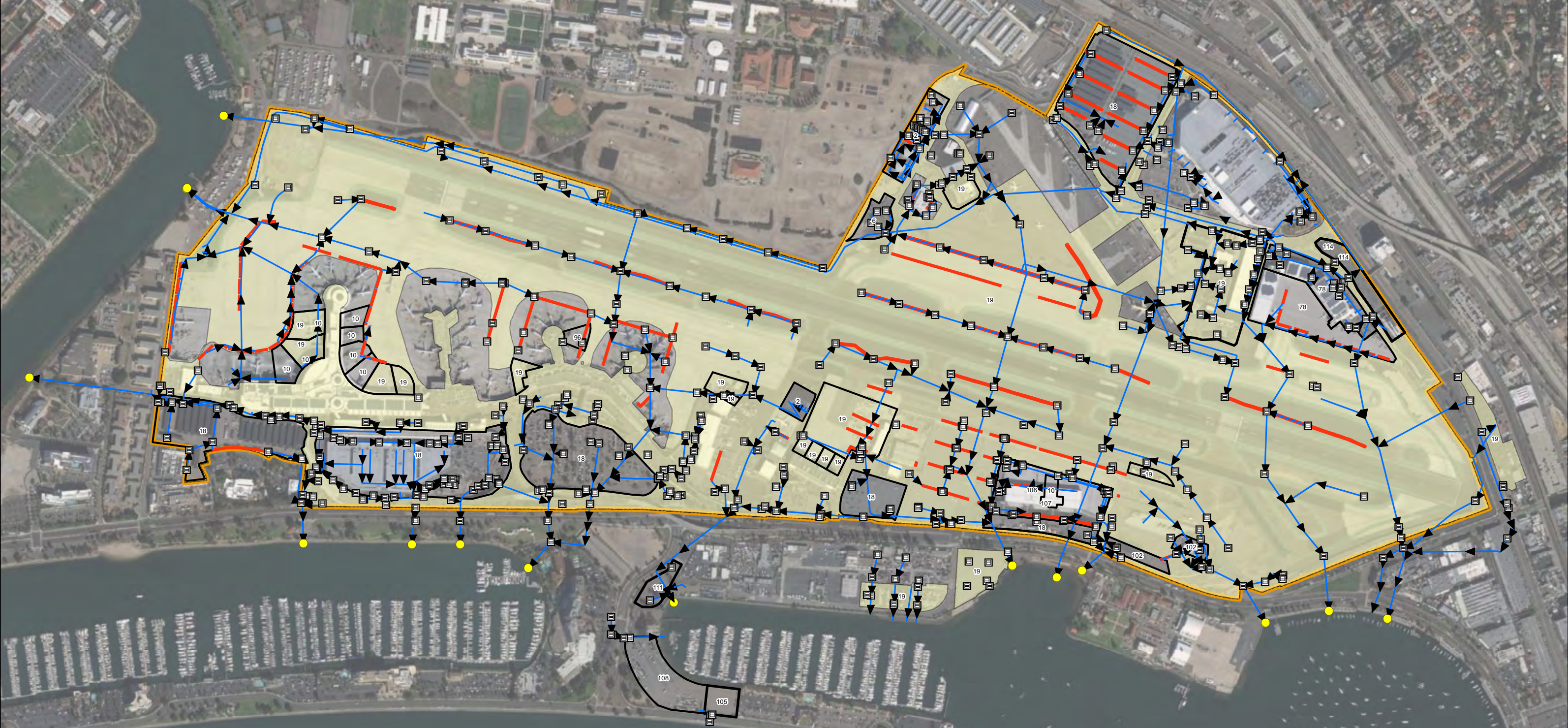
**Appendix B - Best Management Practices**

Intentionally Left Blank

**Tenants Implementing SC-17 BMP:  
Drainage System Maintenance**

- |                       |                |                  |             |                         |
|-----------------------|----------------|------------------|-------------|-------------------------|
| 2 - Menzies Fuel Farm | 18 - ACE       | 96 - Cartwright  | 106 - ASB   | 111 - AVIS              |
| 6 - ARFF              | 19 - SDCRAA    | 102 - SP Plus    | 107 - SANCO | 114 - Port of San Diego |
| 10 - Delta            | 78 - Signature | 105 - Kirschcohn | 108 - ABM   |                         |

- |        |               |                                       |              |
|--------|---------------|---------------------------------------|--------------|
| Inlet  | Outfall       | Stormwater Pipe (with Flow Direction) | Trench Drain |
| SDCRAA | SDIA Boundary |                                       |              |



Service Layer Credits: Source: Esri, Maxar, GeoEye, Earthstar

PROJECT NO.: 5025-18-2002		<p>0 250 500 1,000 1,500 Feet</p>		<p><b>STORM WATER MANAGEMENT PLAN AT SAN DIEGO INTERNATIONAL AIRPORT</b> San Diego, California</p>	<p><b>SC-17 BMP: Drainage System Maintenance</b></p>	<p>FIGURE SC-17</p>
DATE: JANUARY 2022						
DRAWN BY: CAB						
CHECKED BY: AA/NP						

**Appendix B – Best Management Practices**

<b>BMP SC18</b>	<b>HOUSEKEEPING</b>	
	<p><b>PURPOSE:</b> Implement good housekeeping measures to eliminate non-storm water discharges and reduce the potential for pollutants to enter the storm water collection system.</p>	<p><b>TARGETED ACTIVITIES:</b></p> <ul style="list-style-type: none"> <li>➔ Aircraft Deicing/Anti-Icing</li> <li>➔ Aircraft Lavatory Service</li> <li>➔ All Fueling</li> <li>➔ All Maintenance</li> <li>➔ All Storage</li> <li>➔ All Washing</li> <li>➔ Cargo Handling</li> <li>➔ Equipment Cleaning</li> <li>➔ Fire Fighting Equipment Testing</li> <li>➔ Floor Washdowns</li> <li>➔ Garbage Collection</li> <li>➔ Painting/Stripping</li> <li>➔ Potable Water System Flushing</li> <li>➔ Runway Rubber Removal</li> </ul>
	<p><b>POLLUTION PREVENTION:</b></p> <p>Implement the following pollution prevention practices and BMPs to eliminate non-storm water discharges and reduce the potential for pollutants to enter the storm water collection system:</p> <ul style="list-style-type: none"> <li><input type="checkbox"/> Clean operation areas and facilities using dry methods.</li> <li><input type="checkbox"/> Maintain adequate supplies of spill response equipment and absorbent materials in accessible locations where significant materials are stored and used.</li> <li><input type="checkbox"/> Apply integrated pest management mechanical and cultural controls to control for pests and reduce the need of pesticides. Cultural controls target pest attractants using sanitation practices, education, and communication. Mechanical controls create physical barriers as a means of prevention. Create partnerships with other organizations for better implementation of an integrated pest management program.</li> <li><input type="checkbox"/> <b>NEVER HOSE DOWN PAVED AREAS TO THE STORM DRAINS.</b></li> </ul>	<p><b>POLLUTANTS of CONCERN:</b></p> <ul style="list-style-type: none"> <li>➔ Aircraft Fire Fighting Foam</li> <li>➔ Battery Acid</li> <li>➔ Cleaning Solution</li> <li>➔ Deicing/Anti-Icing Fluid</li> <li>➔ Dirt particles</li> <li>➔ Dumpster Wastes</li> <li>➔ Floatables</li> <li>➔ Fuel</li> <li>➔ Heavy Metals</li> <li>➔ Hydrocarbons</li> <li>➔ Landscape Waste</li> <li>➔ Lavatory Chemicals</li> <li>➔ Lavatory Chemical Waste</li> <li>➔ Lavatory Truck Wash Water</li> <li>➔ Lavatory Waste</li> <li>➔ Metals</li> <li>➔ Oil and Grease</li> <li>➔ Paint</li> <li>➔ Pesticides/Herbicides/ Fertilizers</li> <li>➔ Potable Water System Chemicals</li> <li>➔ Rubber Particles</li> <li>➔ Sediment</li> <li>➔ Solvents</li> <li>➔ Suspended solids</li> <li>➔ Trash</li> <li>➔ Vehicle Fluids</li> </ul>

**Appendix B – Best Management Practices**

<b>BMP SC18</b>	<b>HOUSEKEEPING</b>	
<b>OPERATIONS:</b>	<b>APPLICABLE TENANTS/ DEPARTMENTS:</b>	
<p><b>Sub-BMPs</b></p> <ul style="list-style-type: none"> <li>- 01 <input type="checkbox"/> Perform and document on a regular basis self-inspections and evaluations of the implemented BMPs.</li> <li>- 02 <input type="checkbox"/> Keep all facility and operation areas clean and orderly.</li> <li>- 03 <input type="checkbox"/> Place trash receptacles that have covers in appropriate locations.</li> <li>- 04 <input type="checkbox"/> Sweep all facility and operation areas at least once per week to prevent the accumulation of sediments, debris, and contaminants.</li> <li>- 05 <input type="checkbox"/> Properly dispose of all debris and sediment from sweeping.</li> <li>- 06 <input type="checkbox"/> Store significant materials in the appropriate containers that are properly sealed and labeled.</li> <li>- 07 <input type="checkbox"/> Store significant materials within secondary containment.</li> <li>- 08 <input type="checkbox"/> Store significant materials in a restricted access area.</li> <li>- 09 <input type="checkbox"/> Material Safety Data Sheets (MSDSs) are readily available for all significant materials.</li> </ul>	<ul style="list-style-type: none"> <li>→ ABM</li> <li>→ ACE</li> <li>→ Air Canada</li> <li>→ Alaska</li> <li>→ Allegiant</li> <li>→ American Airlines</li> <li>→ ARFF</li> <li>→ Avis</li> <li>→ Bradford</li> <li>→ British Airways</li> <li>→ Cartwright</li> <li>→ Conrac</li> <li>→ Delta</li> <li>→ DHL</li> <li>→ Edelweiss</li> <li>→ FedEx</li> <li>→ Flagship</li> <li>→ Frontier</li> <li>→ Hawaiian</li> <li>→ HFF</li> <li>→ HMS Host</li> <li>→ JAL</li> <li>→ JetBlue</li> <li>→ Kirschcohn</li> <li>→ Lufthansa</li> <li>→ Menzies</li> <li>→ Menzies Fuel Farm</li> <li>→ Mission Yogurt</li> <li>→ Port of San Diego</li> <li>→ SANCO</li> <li>→ SDCRAA</li> <li>→ Siemens</li> <li>→ Signature</li> <li>→ Southwest</li> <li>→ SP Plus</li> <li>→ Spirit</li> <li>→ SSP</li> <li>→ Sun Country</li> <li>→ Swoop Airlines</li> <li>→ United</li> <li>→ UPS</li> <li>→ WestJet</li> </ul>	
<p><b>STRUCTURAL TREATMENT BMPs:</b> Refer to BMP TC01 for information on structural treatment BMPs.</p>		
<p><b>BMP FREQUENCIES/EQUIPMENT/TOOLS:</b> Good housekeeping occurs on a daily basis. Equipment/tools to implement BMPs include trash receptacles, spill pallets, outdoor sheds, overpack containers, tarps, flammable materials storage lockers, bermed or containment areas, indoor or covered storage areas, fiber rolls,</p>		

**Appendix B – Best Management Practices**

<b>BMP SC18</b>	<b>HOUSEKEEPING</b>	
wooden pallets, spill kits, brooms, and drums.		
<b>AUTHORIZED LOCATIONS TO IMPLEMENT HOUSEKEEPING BMPs:</b>		
<input type="checkbox"/>	Prevent non-storm water discharges and contact of pollutants with storm water discharges by implementing good housekeeping BMPs in the designated areas as shown in the attached map.	
Date:		Version: 2.0



**Appendix B - Best Management Practices**

Intentionally Left Blank

**Tenants Implementing SC-18 BMP:**  
**Housekeeping**

- |                       |               |               |                |                  |                      |               |                     |                 |                  |                         |
|-----------------------|---------------|---------------|----------------|------------------|----------------------|---------------|---------------------|-----------------|------------------|-------------------------|
| 1 - Alaska            | 7 - Menzies   | 14 - Hawaiian | 19 - SDCRAA    | 24 - UPS         | 29 - West Jet        | 40 - Bradford | 47 - Mission Yogurt | 96 - Cartwright | 105 - Kirschcohn | 111 - AVIS              |
| 2 - Menzies Fuel Farm | 10 - Delta    | 15 - HMS Host | 21 - Southwest | 26 - Allegiant   | 35 - Spirit          | 42 - JAL      | 50 - Siemens        | 100 - Edelweiss | 106 - ASB        | 113 - Swoop Airlines    |
| 4 - American          | 12 - FedEx    | 16 - JetBlue  | 22 - FlagShip  | 27 - Air Canada  | 37 - British Airways | 45 - SSP      | 77 - Conrac         | 102 - SP Plus   | 107 - SANCO      | 114 - Port of San Diego |
| 6 - ARFF              | 13 - Frontier | 18 - ACE      | 23 - United    | 28 - Sun Country | 38 - DHL             | 46 - HFF      | 78 - Signature      | 103 - Lufthansa | 108 - ABM        |                         |

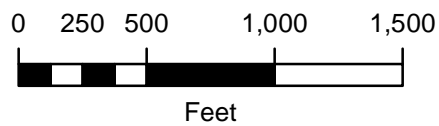
- |            |              |                  |                  |               |                          |           |
|------------|--------------|------------------|------------------|---------------|--------------------------|-----------|
| Composting | Fuel Storage | Grease Trap      | Loading          | Metal Storage | Recycling                | Wash Area |
| Dumpster   | Fueling      | Industrial Waste | Material Storage | Oil Storage   | Underground Storage Tank |           |

SDCRAA SDIA Boundary



Service Layer Credits: Source: Esri, Maxar, GeoEye, Earthstar

PROJECT NO.: 5025-18-2002  
 DATE: JANUARY 2022  
 DRAWN BY: CAB  
 CHECKED BY: AA/NP



**STORM WATER MANAGEMENT PLAN**  
**AT SAN DIEGO INTERNATIONAL AIRPORT**  
 San Diego, California

**SC-18 BMP:**  
**Housekeeping**

FIGURE  
 SC-18

**Appendix B – Best Management Practices**

<b>BMP SC19</b>		<b>SAFER/ALTERNATIVE PRODUCTS</b>	
<p><b>PURPOSE:</b> Reduce the use of harmful, toxic, and non-biodegradable products that could pollute storm water runoff.</p>		<p><b>TARGETED ACTIVITIES:</b></p> <ul style="list-style-type: none"> <li>➔ Aircraft Deicing/Anti-Icing</li> <li>➔ Aircraft Lavatory Service</li> <li>➔ All Fueling</li> <li>➔ All Maintenance</li> <li>➔ All Storage</li> <li>➔ All Washing</li> <li>➔ Cargo Handling</li> <li>➔ Equipment Cleaning</li> <li>➔ Fire Fighting Equip. Testing</li> <li>➔ Floor Washdowns</li> <li>➔ Garbage Collection</li> <li>➔ Outdoor Washdown</li> <li>➔ Painting/Stripping</li> <li>➔ Potable Water System Flush</li> <li>➔ Runway Rubber Removal</li> </ul>	
<p><b>POLLUTION PREVENTION:</b></p>		<p><b>POLLUTANTS of CONCERN:</b></p>	
<p><input type="checkbox"/> Develop an Environmentally Preferable Purchasing Program to (1) minimize the purchase of products containing hazardous ingredients, (2) maximize the purchase of alternative products that pose less risk to employees and to the environment, and (3) maximize the purchase of products containing recycled materials.</p>	<p>Implement the following pollution prevention practices and BMPs to prevent toxic, non-biodegradable materials from entering the storm water collection system:</p>	<ul style="list-style-type: none"> <li>➔ Aircraft Fire Fighting Foam</li> <li>➔ Battery Acid</li> <li>➔ Cleaning Solution</li> <li>➔ Deicing/Anti-Icing Fluid</li> <li>➔ Fuel</li> <li>➔ Heavy Metals</li> <li>➔ Hydrocarbons</li> <li>➔ Lavatory Chemicals</li> <li>➔ Metals</li> <li>➔ Oil and Grease</li> <li>➔ Paint</li> <li>➔ Pesticides/Herbicides/ Fertilizers</li> <li>➔ Potable Water System Chemicals</li> <li>➔ Solvents</li> <li>➔ Vehicle Fluids</li> </ul>	
<p><b>OPERATIONS:</b></p>		<p><b>APPLICABLE TENANTS/ DEPARTMENTS:</b></p>	
<p><b>Sub-BMPs</b></p> <p>- 01 <input type="checkbox"/> Whenever possible, use alternative products that are “Regionally Accepted” and are identified as being non-toxic, less toxic, or biodegradable.</p> <p>- 02 <input type="checkbox"/> Whenever possible, maximize the purchase and use of products containing recycled materials.</p>		<ul style="list-style-type: none"> <li>➔ ACE</li> <li>➔ Air Canada</li> <li>➔ Alaska</li> <li>➔ Allegiant</li> <li>➔ American Airlines</li> <li>➔ ARFF</li> <li>➔ Bradford</li> <li>➔ British Airways</li> <li>➔ Cartwright</li> <li>➔ Conrac</li> </ul>	

**Appendix B – Best Management Practices**

		<ul style="list-style-type: none"> <li>→ Delta</li> <li>→ DHL</li> <li>→ Edelweiss</li> <li>→ FedEx</li> <li>→ Flagship</li> <li>→ Frontier</li> <li>→ Hawaiian</li> <li>→ HFF</li> <li>→ HMS Host</li> <li>→ JAL</li> <li>→ JetBlue</li> <li>→ Menzies</li> <li>→ Menzies Fuel Farm</li> <li>→ Mission Yogurt</li> <li>→ SANCO</li> <li>→ SDCRAA</li> <li>→ Siemens</li> <li>→ Signature</li> <li>→ Southwest</li> <li>→ Spirit</li> <li>→ SSP</li> <li>→ Sun Country</li> <li>→ Swoop Airlines</li> <li>→ United</li> <li>→ UPS</li> <li>→ WestJet</li> </ul>
<p><b>STRUCTURAL TREATMENT BMPs:</b> Refer to BMP TC01 for information on structural treatment BMPs.</p>		
<p><b>BMP FREQUENCIES/EQUIPMENT/TOOLS:</b> Safer/alternative products are used whenever possible and according to the Authority’s and tenant’s policies.</p>		
<p><b>AUTHORIZED LOCATIONS TO USE SAFER/ALTERNATIVE PRODUCTS:</b></p>		
<input type="checkbox"/>	<p>Use non-toxic, less toxic, biodegradable, alternative products whenever possible in the designated areas shown in the attached map.</p>	
<p>Date:</p>	<p>Version: 2.0</p>	

**Appendix B - Best Management Practices**

Intentionally Left Blank

**Tenants Implementing SC-19 BMP:  
Safer/Alternative Products**

- |                       |               |               |                |                  |                      |               |                     |                      |
|-----------------------|---------------|---------------|----------------|------------------|----------------------|---------------|---------------------|----------------------|
| 1 - Alaska            | 7 - Menzies   | 14 - Hawaiian | 19 - SDCRAA    | 24 - UPS         | 29 - West Jet        | 40 - Bradford | 47 - Mission Yogurt | 96 - Cartwright      |
| 2 - Menzies Fuel Farm | 10 - Delta    | 15 - HMS Host | 21 - Southwest | 26 - Allegiant   | 35 - Spirit          | 42 - JAL      | 50 - Siemens        | 100 - Edelweiss      |
| 4 - American          | 12 - FedEx    | 16 - JetBlue  | 22 - FlagShip  | 27 - Air Canada  | 37 - British Airways | 45 - SSP      | 77 - Conrac         | 106 - ASB            |
| 6 - ARFF              | 13 - Frontier | 18 - ACE      | 23 - United    | 28 - Sun Country | 38 - DHL             | 46 - HFF      | 78 - Signature      | 107 - SANCO          |
|                       |               |               |                |                  |                      |               |                     | 113 - Swoop Airlines |

SDCRAA
  SDIA Boundary



Service Layer Credits: Source: Esri, Maxar, GeoEye, Earthstar

<p><b>PROJECT NO.:</b> 5025-18-2002</p> <p><b>DATE:</b> JANUARY 2022</p> <p><b>DRAWN BY:</b> CAB</p> <p><b>CHECKED BY:</b> AA/NP</p>		<p>0 250 500 1,000 1,500</p> <p>Feet</p>		<p><b>STORM WATER MANAGEMENT PLAN AT SAN DIEGO INTERNATIONAL AIRPORT</b></p> <p>San Diego, California</p>	<p><b>SC-19 BMP: Safer/Alternative Products</b></p>	<p>FIGURE SC-19</p>
--	--	--	--	---	---	-------------------------

**Appendix B – Best Management Practices**

<b>BMP SC20</b>		<b>ERODIBLE AREAS</b>	
<p><b>PURPOSE:</b> Prevent or reduce the discharge of pollutants to storm water from erodible areas by implementation of erosion control BMPs to stabilize soils and reduce pollutant discharges. This does not apply to natural, undeveloped areas, except where erosion is occurring as a direct result of onsite human activity, such as paving, land disturbance, or vegetation removal.</p>		<p><b>TARGETED ACTIVITIES:</b></p> <ul style="list-style-type: none"> <li>➔ Erodible Areas</li> <li>➔ Grounds Maintenance</li> <li>➔ Construction Activities</li> </ul>	
<p><b>POLLUTION PREVENTION:</b></p>		<p><b>POLLUTANTS of CONCERN:</b></p>	
<input type="checkbox"/>	<p>Implement the following pollution prevention practices and BMPs to prevent discharges of pollutants from building and grounds maintenance to the storm water collection system:</p>	<ul style="list-style-type: none"> <li>➔ Sediment</li> </ul>	
<input type="checkbox"/>	<p>Minimize site operations on erodible areas.</p>		
<p><b>OPERATIONS:</b></p>		<p><b>APPLICABLE TENANTS/ DEPARTMENTS:</b></p>	
<p><b>Sub-BMPs</b></p> <ul style="list-style-type: none"> <li>- 01 <input type="checkbox"/> Implement erosion control BMPs to stabilize soils.</li> <li>- 02 <input type="checkbox"/> Implement wind erosion control BMPs to control dust.</li> <li>- 03 <input type="checkbox"/> Maintain effective perimeter controls.</li> <li>- 04 <input type="checkbox"/> Stabilize loose soils and slopes prior to a forecasted storm event.</li> <li>- 05 <input type="checkbox"/> Prevent material tracking offsite.</li> <li>- 06 <input type="checkbox"/> Divert all storm water away from erodible materials.</li> </ul>	<ul style="list-style-type: none"> <li>➔ SDCRAA</li> <li>➔ Conrac</li> </ul>		
<p><b>STRUCTURAL TREATMENT BMPs:</b> Refer to BMP TC01 for information on structural treatment BMPs.</p>			
<p><b>BMP FREQUENCIES/EQUIPMENT/TOOLS:</b> Erosion and sediment controls, and diversionary measures are used as needed. Equipment/tools to implement BMPs include various erosion and sediment controls, as applicable for the area, such as fiber rolls.</p>			
<p><b>AUTHORIZED BUILDING AND GROUNDS MAINTENANCE LOCATIONS:</b></p>			
<input type="checkbox"/>	<p>To implement BMPs for the prevention of discharges or pollutants from grounds maintenance, erodible areas, and construction activities, perform maintenance activities within the designated areas as shown in the attached map.</p>		
<p>Date:</p>		<p>Version: 1.0</p>	

**Appendix B - Best Management Practices**

Intentionally Left Blank



**Tenants Implementing SC-20 BMP:  
Erodible Areas**

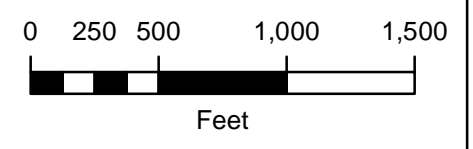
19 - SDCRAA 77 - Conrac

-  Erodible Area
-  SDCRAA  SDIA Boundary



Service Layer Credits: Source: Esri, Maxar, GeoEye, Earthstar

PROJECT NO.: 5025-18-2002  
DATE: JANUARY 2022  
DRAWN BY: CAB  
CHECKED BY: AA/NP



**STORM WATER MANAGEMENT PLAN  
AT SAN DIEGO INTERNATIONAL AIRPORT**  
San Diego, California

**SC-20 BMP:  
Erodible Areas**

FIGURE  
SC-20

**Appendix B – Best Management Practices**

<b>BMP SC21</b>		<b>BUILDING REPAIR AND CONSTRUCTION</b>
<p><b>PURPOSE:</b> Prevent or reduce the discharge of pollutants to storm water from site modifications such as minor and normal building repair and remodeling to construction of new facilities by using soil erosion controls, enclosing or covering building materials storage areas, using good housekeeping practices, using safer alternative products, and training employees.</p>		<p><b>TARGETED ACTIVITIES:</b></p> <ul style="list-style-type: none"> <li>➔ Building Remodeling/Repair</li> <li>➔ Construction Activities</li> </ul>
<p><b>POLLUTION PREVENTION:</b></p> <p>Implement the following pollution prevention practices and BMPs to eliminate non-storm water discharges and reduce the potential for pollutants to enter the storm water collection system:</p> <ul style="list-style-type: none"> <li><input type="checkbox"/> Implementation of erosion control BMPs for temporary stabilization of inactive areas.</li> <li><input type="checkbox"/> Implementation of sediment control BMPs for perimeter control, run-on/runoff control, and inlet protection.</li> <li><input type="checkbox"/> Implementation of tracking control BMPs to prevent offsite tracking.</li> <li><input type="checkbox"/> Implementation of wind erosion control BMPs to control dust that can contribute to air pollution.</li> <li><input type="checkbox"/> Implementation of materials and waste management BMPs to properly manage materials and waste on site.</li> <li><input type="checkbox"/> Implementation of non-stormwater BMPs to prevent discharge of pollutants and properly manage wastewater or wash water generated from the construction activities such as equipment or vehicle maintenance and fueling; saw cutting and grinding from pavement removal; pavement paving and sealing; concrete curing etc.</li> <li><input type="checkbox"/> Use recycled or non-potable water for construction purposes when available.</li> </ul>		<p><b>POLLUTANTS of CONCERN:</b></p> <ul style="list-style-type: none"> <li>➔ Asphalt</li> <li>➔ Basic Materials</li> <li>➔ Concrete</li> <li>➔ Construction Materials</li> <li>➔ Construction Debris</li> <li>➔ Floatables</li> <li>➔ Fuel</li> <li>➔ Metals</li> <li>➔ Oil and Grease</li> <li>➔ Paint</li> <li>➔ Sediment</li> <li>➔ Sealants</li> <li>➔ Septic Wastes</li> <li>➔ Solvents</li> <li>➔ Suspended solids</li> <li>➔ Synthetic Organics</li> <li>➔ Trash</li> <li>➔ Vehicle Fluids</li> </ul>
<p><b>OPERATIONS:</b></p> <p><b>Sub-BMPs</b></p> <ul style="list-style-type: none"> <li>- 01 <input type="checkbox"/> Avoid outdoor repairs and construction during rain events or during any period for which the National Weather Service is forecasting a 50% chance of precipitation.</li> <li>- 02 <input type="checkbox"/> Stabilize inactive areas (where there will be no construction for 14 days) or finished slopes or erodible areas with erosion control.</li> <li>- 03 <input type="checkbox"/> Implement wind erosion control BMPs to control dust, and limit traffic to stabilized roadways within the site, where possible.</li> <li>- 04 <input type="checkbox"/> Maintain effective perimeter and run-on controls.</li> <li>- 05 <input type="checkbox"/> Maintain effective inlet protection.</li> </ul>		<p><b>APPLICABLE TENANTS/ DEPARTMENTS:</b></p> <ul style="list-style-type: none"> <li>➔ SANCO</li> <li>➔ SDCRAA</li> <li>➔ Any tenant conducting targeted activities</li> </ul>

**Appendix B – Best Management Practices**

<ul style="list-style-type: none"> <li>- 06 <input type="checkbox"/> Install a stabilized construction entrance to prevent offsite tracking.</li> <li>- 07 <input type="checkbox"/> Sweep streets of any loose dirt or materials.</li> <li>- 08 <input type="checkbox"/> Cover and contain all chemicals, liquids, erodible landscape materials, and fertilizers when not in use.</li> <li>- 09 <input type="checkbox"/> Discontinue use of erodible landscape material within 2 days prior to forecasted rain event or when it’s raining.</li> <li>- 10 <input type="checkbox"/> Cover and berm material and waste stockpiles when inactive and before the onset of a rain event. Use plastic under-sheets when appropriate.</li> <li>- 11 <input type="checkbox"/> Cover waste containers at the end of each work day and prior to a rain event, and have waste recycled or collected and properly disposed of frequently.</li> <li>- 12 <input type="checkbox"/> Perform concrete washout in designated areas away from inlets and drainage courses, and in appropriately sized and designed pits or containers. Empty regularly.</li> <li>- 13 <input type="checkbox"/> Temporary sanitary facilities must have secondary containment and be located away from storm drains and traffic circulation.</li> <li>- 14 <input type="checkbox"/> Minimize water usage and use reclaimed water where possible.</li> <li>- 15 <input type="checkbox"/> Contain any particulate generating activities.</li> <li>- 16 <input type="checkbox"/> Designate areas for fueling equipment and vehicles away from inlets and drainage courses or perform offsite.</li> </ul>	<p align="center"><b>SEE ALSO BMP SC20 AND INDIVIDUAL CONSTRUCTION SWPPPs OR WPCPs</b></p>	
<p><b>STRUCTURAL TREATMENT BMPs:</b> Refer to BMP TC01 for information on structural treatment BMPs.</p>		
<p><b>BMP FREQUENCIES/EQUIPMENT/TOOLS:</b> Building repair and construction BMPs are used as needed and as outlined in the SWPPPs or WPCPs. Equipment/tools to implement BMPs include fiber rolls, gravel bags, straw waddles, silt fences, mulch, hydraulic mulch, water trucks, rumble plates, sweepers, brooms, spill kits, drums, secondary containment devices, tarps, cover, covered dumpsters etc.</p>		
<p><b>AUTHORIZED LOCATIONS TO IMPLEMENT HOUSEKEEPING BMPs:</b></p>		
<input type="checkbox"/>	<p>Prevent non-storm water discharges and contact of pollutants with storm water discharges by implementing remodeling/repair, and construction BMPs in the designated areas as shown in the attached map.</p>	
<p>Date:</p>	<p>Version: 1.0</p>	

**Appendix B - Best Management Practices**

Intentionally Left Blank

**Tenants Implementing SC-21 BMP:  
Building Repair & Construction**

19 - SDCRAA 107 - SANCO

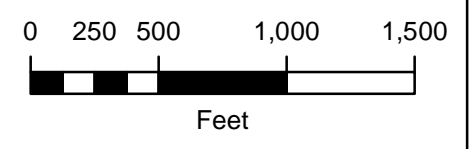
 Building/Roofed Structure

 SDCRAA  SDIA Boundary



Service Layer Credits: Source: Esri, Maxar, GeoEye, Earthstar

PROJECT NO.:  
5025-18-2002  
DATE:  
JANUARY 2022  
DRAWN BY:  
CAB  
CHECKED BY:  
AA/NP



**STORM WATER MANAGEMENT PLAN  
AT SAN DIEGO INTERNATIONAL AIRPORT**  
San Diego, California

**SC-21 BMP:  
Building Repair & Construction**

FIGURE  
SC-21

**Appendix B – Best Management Practices**

<b>BMP SR01</b>		<b>SPILL PREVENTION, CONTROL, AND CLEAN-UP</b>	
<p><b>PURPOSE:</b> Prevent or reduce the discharge of pollutants to storm water resulting from spills, leaks and improper cleanup of significant and other materials.</p>		<p><b>TARGETED ACTIVITIES:</b></p> <ul style="list-style-type: none"> <li>➔ Aircraft Deicing/Anti-Icing</li> <li>➔ Aircraft Lavatory Service</li> <li>➔ All Fueling</li> <li>➔ All Maintenance</li> <li>➔ All Storage</li> <li>➔ All Washing</li> <li>➔ Cargo Handling</li> <li>➔ Equipment Cleaning</li> <li>➔ Fire Fighting Equip. Testing</li> <li>➔ Floor Washdowns</li> <li>➔ Garbage Collection</li> <li>➔ Outdoor Washdown</li> <li>➔ Painting/Stripping</li> <li>➔ Runway Rubber Removal</li> </ul>	
<p><b>POLLUTION PREVENTION:</b></p>		<p><b>POLLUTANTS of CONCERN:</b></p>	
<p><input type="checkbox"/> Provide formal training in execution of the Spill Plan(s) to key personnel, with additional training for first responder level personnel. All employees should have basic knowledge of spill control procedures and potential dangers of spills on human health and the environment. Incorporate spill control procedures in regular safety meetings to reinforce practices.</p> <p><input type="checkbox"/> Maintain an inventory of appropriate cleanup materials and equipment on-site and strategically deploy cleanup materials and equipment based on the type and quantities of chemicals present.</p>	<p>Implement the following pollution prevention practices and BMPs to prevent spills and leaks of significant and other materials to the storm water collection system:</p>	<ul style="list-style-type: none"> <li>➔ Aircraft Fire Fighting Foam</li> <li>➔ Battery Acid</li> <li>➔ Cleaning Solution</li> <li>➔ Deicing/Anti-Icing Fluid</li> <li>➔ Fuel</li> <li>➔ Heavy Metals</li> <li>➔ Hydrocarbons</li> <li>➔ Lavatory Chemicals</li> <li>➔ Metals</li> <li>➔ Oil and Grease</li> <li>➔ Paint</li> <li>➔ Pesticides/Herbicides/ Fertilizers</li> <li>➔ Potable Water System Chemicals</li> <li>➔ Solvents</li> <li>➔ Vehicle Fluids</li> </ul>	
<p><b>OPERATIONS:</b></p>		<p><b>APPLICABLE TENANTS/ DEPARTMENTS:</b></p>	
<p><b>Sub-BMPs</b></p> <p>- 01 <input type="checkbox"/> Develop, implement, and keep current Spill Plan, and develop facility spill prevention and response procedures.</p> <p>- 02 <input type="checkbox"/> Post a summary of the Spill Plan and spill response procedures, at key locations, identifying the spill cleanup coordinators, location of cleanup equipment, and phone numbers of regulatory agencies to be contacted in the event of a spill.</p> <p>- 03 <input type="checkbox"/> Train relevant employees and contractors in the implementation of the Spill Plan, if applicable, or spill control procedures.</p> <p>- 04 <input type="checkbox"/> Use leak and spill prevention devices.</p>	<p>Develop, implement, and keep current Spill Plan, and develop facility spill prevention and response procedures.</p> <p>Post a summary of the Spill Plan and spill response procedures, at key locations, identifying the spill cleanup coordinators, location of cleanup equipment, and phone numbers of regulatory agencies to be contacted in the event of a spill.</p> <p>Train relevant employees and contractors in the implementation of the Spill Plan, if applicable, or spill control procedures.</p> <p>Use leak and spill prevention devices.</p>	<ul style="list-style-type: none"> <li>➔ ABM</li> <li>➔ ACE</li> <li>➔ Air Canada</li> <li>➔ Alaska</li> <li>➔ Allegiant</li> <li>➔ American Airlines</li> <li>➔ ARFF</li> <li>➔ Avis</li> <li>➔ Bradford</li> <li>➔ British Airways</li> <li>➔ Cartwright</li> </ul>	

**Appendix B – Best Management Practices**

<p>- 05 <input type="checkbox"/> Place adequate spill kits in appropriate locations.</p> <p>- 06 <input type="checkbox"/> Notify Airport Operations (619-400-2710), the Airport Authority Planning &amp; Environmental Affairs Department (619-400-2784), and any agencies or companies identified in the Spill Plan or facility spill prevention and response procedures in the event of a spill.</p> <p>- 07 <input type="checkbox"/> In the event of a spill or release, immediately follow procedures identified in the Spill Plan or facility spill prevention and response procedures.</p> <p>- 08 <input type="checkbox"/> Use only dry-cleaning methods.</p> <p>- 09 <input type="checkbox"/> Properly dispose of all used spill control and clean-up materials.</p> <p>- 10 <input type="checkbox"/> Waste water from washing activities is captured by vacuum and properly disposed of, or is diverted to a structural treatment control, sanitary sewer, or dead end sump with pump.</p>		<ul style="list-style-type: none"> <li>→ Conrac</li> <li>→ Delta</li> <li>→ DHL</li> <li>→ Edelweiss</li> <li>→ FedEx</li> <li>→ Flagship</li> <li>→ Frontier</li> <li>→ Hawaiian</li> <li>→ HFF</li> <li>→ HMS Host</li> <li>→ JAL</li> <li>→ JetBlue</li> <li>→ Kirschcohn</li> <li>→ Lufthansa</li> <li>→ Menzies</li> <li>→ Menzies Fuel Farm</li> <li>→ Mission Yogurt</li> <li>→ Port of San Diego</li> <li>→ SANCO</li> <li>→ SDCRAA</li> <li>→ Siemens</li> <li>→ Signature</li> <li>→ Southwest</li> <li>→ SP Plus</li> <li>→ Spirit</li> <li>→ SSP</li> <li>→ Sun Country</li> <li>→ Swoop Airlines</li> <li>→ United</li> <li>→ UPS</li> <li>→ WestJet</li> </ul>
<p><b>STRUCTURAL TREATMENT BMPs:</b> Refer to BMP TC01 for information on structural treatment BMPs.</p>		
<p><b>BMP FREQUENCIES/EQUIPMENT/TOOLS:</b> Spill prevention and control occurs on a daily basis. Clean up is as needed. Equipment/tools to implement BMPs include spill pallets, outdoor sheds, overpack containers, tarps, flammable materials storage lockers, bermed or containment areas, fiber rolls, shop vacuums, spill kits, brooms, and drums.</p>		
<p><b>AUTHORIZED LOCATIONS TO IMPLEMENT SPILL PREVENTION, CONTROL AND CLEANUP BMPs:</b></p>		
<p><input type="checkbox"/></p>	<p>Implement BMPs for the prevention of non-storm water discharges from spills, leaks or improper cleanups at the designated areas as shown in the attached map.</p>	
<p>Date:</p>	<p>Version: 2.0</p>	

**Appendix B - Best Management Practices**

Intentionally Left Blank



**Tenants Implementing SR-01 BMP:**  
**Spill Prevention, Control & Clean Up**

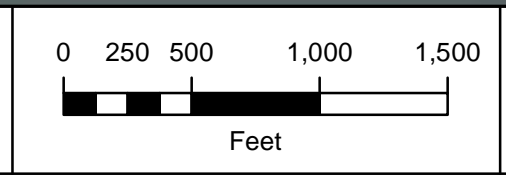
- |                       |               |               |                |                  |                      |               |                     |                 |                  |                         |
|-----------------------|---------------|---------------|----------------|------------------|----------------------|---------------|---------------------|-----------------|------------------|-------------------------|
| 1 - Alaska            | 7 - Menzies   | 14 - Hawaiian | 19 - SDCRAA    | 24 - UPS         | 29 - West Jet        | 40 - Bradford | 47 - Mission Yogurt | 96 - Cartwright | 105 - Kirschcohn | 111 - AVIS              |
| 2 - Menzies Fuel Farm | 10 - Delta    | 15 - HMS Host | 21 - Southwest | 26 - Allegiant   | 35 - Spirit          | 42 - JAL      | 50 - Siemens        | 100 - Edelweiss | 106 - ASB        | 113 - Swoop Airlines    |
| 4 - American          | 12 - FedEx    | 16 - JetBlue  | 22 - FlagShip  | 27 - Air Canada  | 37 - British Airways | 45 - SSP      | 77 - Conrac         | 102 - SP Plus   | 107 - SANCO      | 114 - Port of San Diego |
| 6 - ARFF              | 13 - Frontier | 18 - ACE      | 23 - United    | 28 - Sun Country | 38 - DHL             | 46 - HFF      | 78 - Signature      | 103 - Lufthansa | 108 - ABM        |                         |

- |            |               |                  |                  |               |                          |           |
|------------|---------------|------------------|------------------|---------------|--------------------------|-----------|
| Composting | Fuel Storage  | Grease Trap      | Loading          | Metal Storage | Recycling                | Wash Area |
| Dumpster   | Fueling       | Industrial Waste | Material Storage | Oil Storage   | Underground Storage Tank |           |
| SDCRAA     | SDIA Boundary |                  |                  |               |                          |           |



Service Layer Credits: Source: Esri, Maxar, GeoEye, Earthstar

PROJECT NO.: 5025-18-2002  
 DATE: JANUARY 2022  
 DRAWN BY: CAB  
 CHECKED BY: AA/NP



**STORM WATER MANAGEMENT PLAN**  
**AT SAN DIEGO INTERNATIONAL AIRPORT**  
 San Diego, California

**SR-01 BMP:**  
**Spill Prevention, Control & Clean Up**

FIGURE  
 SR-01

**Appendix B – Best Management Practices**

<b>BMP TC01</b>	<b>TREATMENT CONTROLS</b>	
	<p><b>PURPOSE:</b> Eliminate non-storm water discharges to the storm water collection system and remove petroleum compounds, grease, sediments, trash and debris, metals, and other contaminants from storm water through the use of structural treatment control BMPs.</p>	<p><b>TARGETED ACTIVITIES:</b></p> <ul style="list-style-type: none"> <li>➔ Aircraft Deicing/Anti-Icing</li> <li>➔ Aircraft Lavatory Service</li> <li>➔ All Fueling</li> <li>➔ All Maintenance</li> <li>➔ All Storage</li> <li>➔ All Washing</li> <li>➔ Cargo Handling</li> <li>➔ Equipment Cleaning</li> <li>➔ Fire Fighting Equip. Testing</li> <li>➔ Floor Washdowns</li> <li>➔ Garbage Collection</li> <li>➔ Outdoor Washdown</li> <li>➔ Painting/Stripping</li> <li>➔ Potable Water System Flush</li> <li>➔ Runway Rubber Removal</li> </ul>
	<p><b>POLLUTION PREVENTION:</b></p>	
	<p>Implement the following pollution prevention practices and BMPs to reduce pollutants in storm water and non-storm water discharges and to maintain the proper functioning of structural treatment control BMPs:</p> <ul style="list-style-type: none"> <li><input type="checkbox"/> Properly dispose of any standing water and accumulated waste removed during cleaning operations in accordance with federal, state, and local requirements.</li> <li><input type="checkbox"/> CASQA recommends cleaning of water quality inlets (which includes oil water separators (OWS)) at least twice during the wet season. However, the schedule depends on the operating conditions of the SDIA OWS.</li> <li><input type="checkbox"/> Inspect and maintain OWS as follows:             <ol style="list-style-type: none"> <li>1. Inspect OWS regularly to establish trends in operating conditions of the SDIA OWS.</li> <li>2. Prior to the wet season, inspect for sediment accumulation in the pre-separator and/or separator chambers, and if it is greater than 12 inches deep, remove the accumulated material (for example, with a vactor truck), characterize it, and properly dispose of it.</li> <li>3. Prior to the wet season, inspect for oil accumulation in the oil chamber, and if it is more than 50 percent of the chamber volume, remove the oil and grease, characterize it, and properly dispose of it.</li> <li>4. Inspect coalescer for debris and gummy deposits. If these are present, wash the coalescer in an appropriate area with high pressure hot water.</li> <li>5. Inspect for general mechanical integrity per manufacturer’s guidelines at least annually and operate each mechanical component to ensure proper operation. Repair as needed.</li> </ol> </li> </ul>	<p><b>POLLUTANTS of CONCERN:</b></p> <ul style="list-style-type: none"> <li>➔ Aircraft Fire Fighting Foam</li> <li>➔ Battery Acid</li> <li>➔ Cleaning Solution</li> <li>➔ Deicing/Anti-Icing Fluid</li> <li>➔ Fuel</li> <li>➔ Heavy Metals</li> <li>➔ Hydrocarbons</li> <li>➔ Lavatory Chemicals</li> <li>➔ Metals</li> <li>➔ Oil and Grease</li> <li>➔ Paint</li> <li>➔ Pesticides/Herbicides/ Fertilizers</li> <li>➔ Potable Water System Chemicals</li> <li>➔ Solvents</li> <li>➔ Vehicle Fluids</li> </ul>

## Appendix B – Best Management Practices

<input type="checkbox"/>	<p>Inspect and maintain drain inserts as follows:</p> <ol style="list-style-type: none"> <li>1. Inspect inserts every 3 months in the dry season and prior to every storm event in the wet season. Remove any trash and debris that could interfere with the proper functioning of the insert.</li> <li>2. Replace inserts if sediment reaches a depth of greater than 6 inches, or if rips or tears are observed. Properly characterize and dispose of the insert and sediment.</li> <li>3. Inspect monthly for saturation of any oil absorbent material. Upon saturation, replace absorbent material.</li> </ol>	
<input type="checkbox"/>	<p>Inspect and maintain Contech CDS units as follows:</p> <ol style="list-style-type: none"> <li>1. Inspect CDS unit every 6 months.</li> <li>2. Check for blockages or obstructions in inlet and separation screen.</li> <li>3. Clean CDS unit during dry weather conditions when level of sediments reach 75% of capacity in isolated sump or when a sufficient level of hydrocarbon and trash has accumulated. Using a vactor truck is recommended.</li> <li>4. Properly characterize and dispose of accumulated wastes.</li> </ol>	
<input type="checkbox"/>	<p>Inspect and maintain Contech StormFilter units as follows:</p> <ol style="list-style-type: none"> <li>1. Inspect and maintain StormFilter unit annually during the dry season or more frequently depending on high sediment accumulation after major storms. Maintenance will be done every 3 years as minimum.</li> <li>2. Check level of sediment accumulation on vault floor and top of cartridge. Use vactor truck to remove sediments if sediment loading is &gt;4" on vault floor or &gt;1/4" on top of cartridge.</li> <li>3. Check if cartridges are submerged 24 hours after rain event, and for plugged media, extended bypass condition, or pronounced scum line present above top cap; replace cartridges.</li> <li>4. Properly characterize and dispose of accumulated wastes.</li> </ol>	
<input type="checkbox"/>	<p>Inspect and maintain Clearwater BMP unit as follows:</p> <ol style="list-style-type: none"> <li>1. Inspect and maintain BMP unit every 2 months during the rainy season and at the end of the rainy season.</li> <li>2. Check hydrocarbon sock for full absorption. Replace if hard when squeezed.</li> <li>3. Remove trash and debris in trash collection baskets.</li> <li>4. Clean primary settling chamber of floatables and sediments when it is 50% full. Recommend using vactor truck to remove sediment area thoroughly.</li> <li>5. Replace filter canister and filter media bag when media is spent. Replace filter matt if condition is poor.</li> <li>6. Properly characterize and dispose of accumulated wastes and spent parts.</li> </ol>	
<input type="checkbox"/>	<p>Inspect and maintain Bioclean trench drain filters as follows:</p> <ol style="list-style-type: none"> <li>1. Inspect and maintain trench drain filters every 3 months for cleaning and debris removal. Remove all trash, debris, organics, and sediments collected and dispose of properly.</li> <li>2. Inspect and replace hydrocarbon booms in trench drain filters every 6 months. Properly dispose hydrocarbon boom as hazardous waste.</li> </ol>	

### Appendix B – Best Management Practices

<input type="checkbox"/>	<p>Inspect and clean Bioclean inlet skimmers at least once during the dry season. Clean catch basin filters that are at least 50% full of trash and debris and dispose of properly. Vactor truck is recommended for cleanout.</p>	
<input type="checkbox"/>	<p>Inspect permeable surfaces and swales at least every 6 months and maintain permeable surfaces and swales by removing accumulations of sediments and debris, replacement of mulch, removal of dead plants, pruning or mowing, temporary watering, sweeping, or filling potholes or fill material.</p>	
<input type="checkbox"/>	<p>Contact vector control agency if mosquito breeding is observed or suspected.</p>	
<b>OPERATIONS:</b>		<b>APPLICABLE TENANTS/ DEPARTMENTS:</b>
<p><b>Sub-BMPs</b></p> <p>- 01 <input type="checkbox"/> Regularly inspect, clean, and maintain all structural treatment control BMPs to prevent the accumulation or resuspension of oil, grease, floating debris, and sediments.</p> <p>- 02 <input type="checkbox"/> During cleaning operations, close any effluent valves at the treatment control device and properly dispose of any standing water and accumulated waste that are removed. Replace oil absorbent pads in the treatment control device prior to the start of the wet season and as needed.</p> <p>- 03 <input type="checkbox"/> Document and maintain records for all inspections, cleaning, and maintenance of structural treatment control BMPs.</p> <p>- 04 <input type="checkbox"/> Perform an annual inventory of all structural treatment control BMPs.</p>		<p>→ Bradford</p> <p>→ Conrac</p> <p>→ FedEx</p> <p>→ Menzies Fuel Farm</p> <p>→ SANCO</p> <p>→ SDCRAA</p> <p>→ Signature</p>
<p><b>BMP FREQUENCIES/EQUIPMENT/TOOLS:</b> Treatment control BMP inspections and maintenance frequencies are described in Section 6.0. Equipment/tools to implement BMPs include measuring devices, flashlights, gloves, vactor trucks, sweepers, new parts for proprietary BMPs (e.g., cartridges), spill kits, brooms, and drums.</p>		
<p><b>AUTHORIZED LOCATIONS TO IMPLEMENT TREATMENT CONTROL BMPs AND TO MAINTAIN TREATMENT CONTROL BMPs:</b></p>		
<input type="checkbox"/>	<p>To implement BMPs for the prevention of non-storm water discharges, and to reduce pollutants in storm water discharges, inspect and maintain water structural treatment control BMPs located within the designated areas as shown in the attached map.</p>	
Date:		Version: 2.0

**Appendix B - Best Management Practices**

Intentionally Left Blank

**Tenants Implementing TC-01 BMP:  
Structural Treatment Control BMPs**

2 - Menzies Fuel Farm 12 - FedEx 19 - SDCRAA 40 - Bradford 77 - Conrac 78 - Signature 107 - SANCO

- |  |  |  |                                       |                              |  |   |
|--|--|--|---------------------------------------|------------------------------|--|---|
| <b>A</b> Inlet Filter                    | <b>B</b> Permeable Surface                 | <b>F</b> Infiltration Trench           | <b>J</b> Modular Wetland System       | <b>N</b> Aquashield HDS      | <b>R</b> Subsurface Infiltration Basin       | <b>V</b> Contech Jellyfish Unit                               |
| <b>AA</b> Cistern                        | <b>C</b> Trench Drain Filter               | <b>G</b> Contech Storm Filter          | <b>K</b> Detention Basin              | <b>O</b> Oil Water Separator | <b>S</b> Curb Inlet Box                      | <b>W</b> CleanWay Metalzorb                                   |
| <b>AB</b> HFF Oil Stop Valve             | <b>D</b> Bio Clean Grate Inlet Skimmer Box | <b>H</b> Contech CDS                   | <b>L</b> Bioswale                     | <b>P</b> Pervious Gravel     | <b>T</b> Curb Cut with Rock Infiltration Bed | <b>X</b> Activated Alumina Filter Bags                        |
| <b>AC</b> Underground Infiltration Basin | <b>E</b> Bio Clean Curb Inlet Skimmer Box  | <b>I</b> ClearWater Solutions BMP Unit | <b>M</b> Artificial Turf Infiltration | <b>Q</b> Bioretention Basin  | <b>U</b> OldCastle/Kristar Perfilter Unit    | <b>Y</b> Biochar Boom   |
| SDCRAA                                   | SDIA Boundary                              |  |                                       |                              |  | <b>Z</b> Revel Environmental Manufacturing (REM) Inlet Filter |



Service Layer Credits: Source: Esri, Maxar, GeoEye, Earthstar