



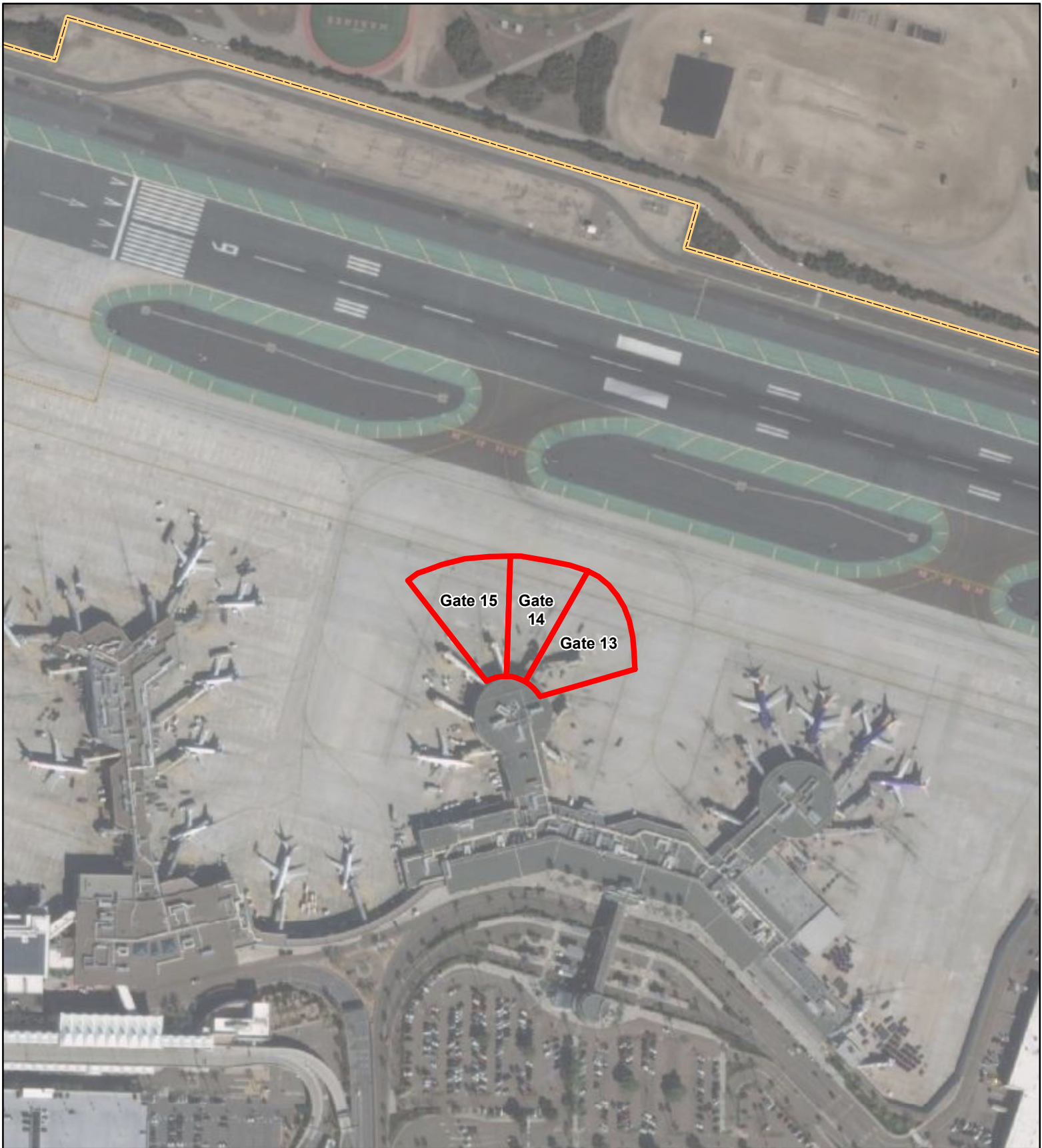
Activities

Non-Storm Water Management  
Outdoor Equipment Ops Maintenance Areas  
Aircraft, Ground Vehicle & Equipment Maintenance  
Aircraft, Ground Vehicle & Equipment Fueling  
Aircraft, Ground Vehicle & Equipment Cleaning  
Outdoor Loading/Unloading of Materials  
Outdoor Material Storage  
Waste Handling & Disposal  
Employee Training  
Lavatory Service Operation  
Outdoor Wash down/Sweeping  
Potable Water System Flushing  
Housekeeping  
Safer/Alternative Products  
Spill Prevention, Control & Clean Up



BMPs

SC01 - 1, 2, 4, 7  
SC02A - 1, 2  
SC02B - 1, 2, 3, 4, 5, 6, 7, 8, 9, 10, 11, 12, 13  
SC03 - 1, 2, 4, 5, 6, 8  
SC04 - 1, 2, 5  
SC06 - 1, 2, 3, 6, 7  
SC07 - 1, 2, 3, 7, 12  
SC08 - 1, 2, 3, 4, 5, 8, 9, 10, 11, 12, 14  
SC10 - 1, 2, 3, 4  
SC11 - 3, 4, 5, 6, 7, 8, 9, 10, 11  
SC12 - 2, 3, 5, 12  
SC14 - 1, 2  
SC18 - 1, 2, 3, 4, 5, 6, 7, 8, 9  
SC19 - 1, 2  
SR01 - 1, 2, 3, 4, 5, 6, 7, 8, 9

\* Appendix B provides descriptions for each BMP category.



**LEGEND**

 Operating Area(s)  SDIA Boundary



Service Layer Credits: Source: Esri, Maxar, GeoEye, Earthstar Geographics, CNES/Airbus DS, USDA, USGS, AeroGRID, IGN, and the GIS User Community

PROJECT NO.:	5025-18-2002
DATE:	FEBRUARY 2022
DRAWN BY:	CAB
CHECKED BY:	AA/NP



**SAN DIEGO INTERNATIONAL AIRPORT**

**JetBlue  
Operating Areas**

FIGURE

**E-23**