

High Flying Foods

SIC Codes 5812
Primary Activity Food & Beverage
Drainage Areas 8
Nearest MS4 Inlet 200 - 1000 ft.
Address 3225 North Harbor Dr.
San Diego, CA 92101

Contact Information
Kimberly Hazard Manager - Ops
P 8585310312 C
khazard@highflyingfoods.com

Steven McGlynn Assistant Manager
P (858) 205-4004
smcglynn@highflyingfoods.com

Facility Description and Activities

1. Participates in the Airports compost program.
2. Grease is picked up twice per week (Tuesday and Saturday) by Bradford.
3. Does not operate any equipment.
4. Bradford delivers products to T1 indoor/outdoor storage area at Gate 7 and T2 indoor storage unit.
5. Flagship picks up trash, recycling, and compost directly from the store.
6. All employees went through the airport compost training and managers occasionally inspect the compost for contamination.

Significant Materials/Activities Potentially Exposed to Storm Water

Potential Pollutant Sources

Material loading/unloading
Outdoor waste storage
Trash collection

Potential Pollutants

Cleaning Solutions
Food Waste
Oil & Grease
Recyclables
Trash

Best Management Practices Applicable to Facility

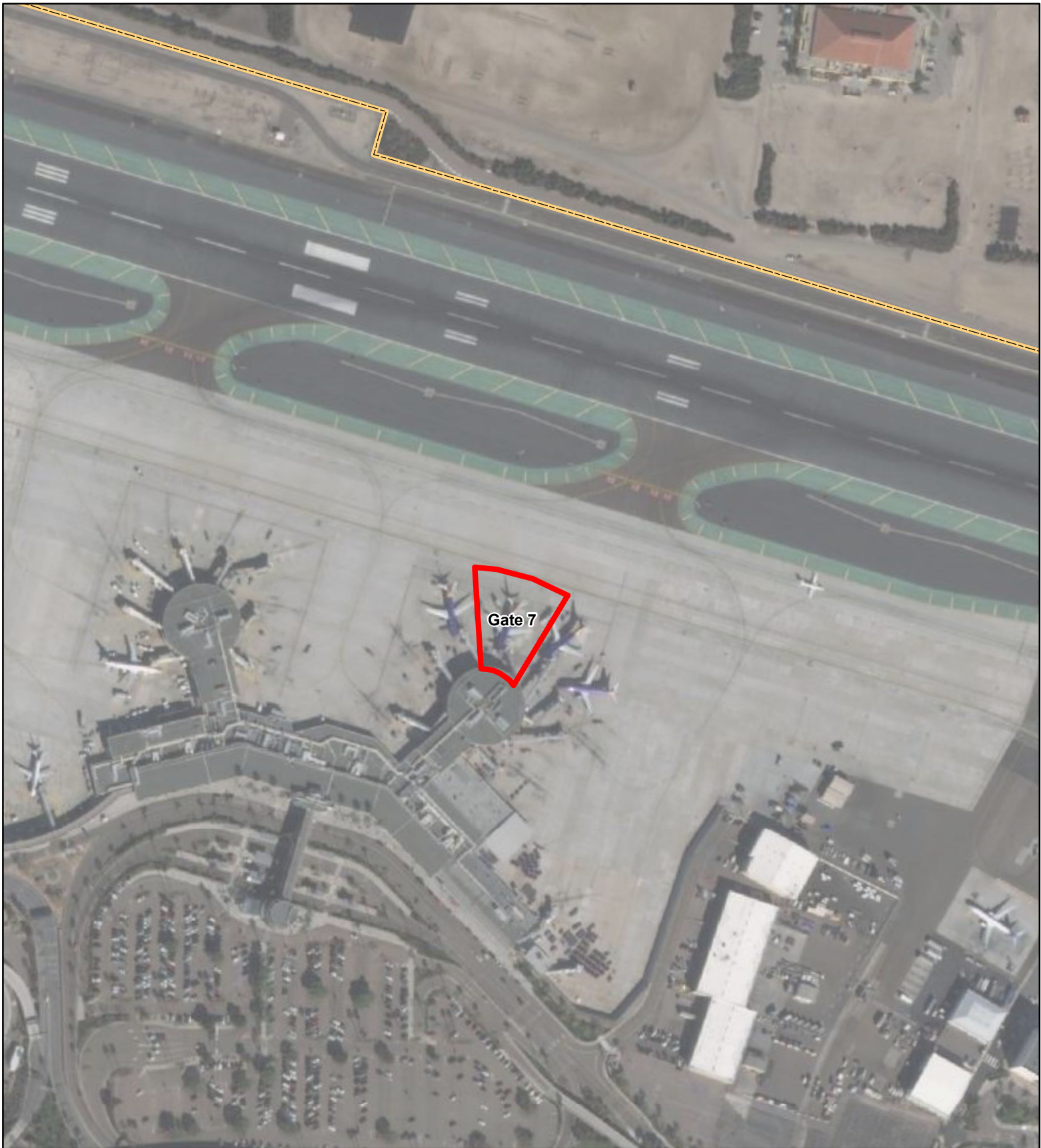
Activities

Non-Storm Water Management
Outdoor Loading/Unloading of Materials
Waste Handling & Disposal
Employee Training
Housekeeping
Safer/Alternative Products
Spill Prevention, Control & Clean Up



BMPs

SC01 - 1, 2, 4
SC06 - 1, 2, 3, 6, 7
SC08 - 1, 2, 3, 4, 5, 6, 8, 9, 10, 11, 12, 14
SC10 - 1, 2, 3, 4
SC18 - 1, 2, 3, 4, 5, 6, 7, 8, 9
SC19 - 1, 2
SR01 - 1, 2, 3, 5, 6, 7, 9, 10

* Appendix B provides descriptions for each BMP category.



LEGEND

 Operating Area(s)  SDIA Boundary



Service Layer Credits: Source: Esri, Maxar, GeoEye, Earthstar Geographics, CNES/Airbus DS, USDA, USGS, AeroGRID, IGN, and the GIS User Community

PROJECT NO.:	5025-18-2002
DATE:	FEBRUARY 2022
DRAWN BY:	CAB
CHECKED BY:	AA/NP



SAN DIEGO INTERNATIONAL AIRPORT

**HFF
Operating Areas**

FIGURE

E-20