

FlagShip

SIC Codes 4581
Primary Activity Janitorial
Drainage Areas 12, 15, 8
Nearest MS4 Inlet < 200 ft.
Address 3835 North Harbor Dr. #130
San Diego, CA 92101

Contact Information

Gustavo Solis	Manager - Account
P 6192986793	C 9493900190
gsolis@Flagshipinc.com	
<hr/>	
Ali Rios	Manager - Ops
P 6192986793	C 6195509630
arios@flagshipinc.com	

Facility Description and Activities

1. FlagShip (formerly SPC) is responsible for cleaning the restrooms inside the airport and those on the airside. They empty all trash cans and recycling cans inside and outside the airport, but not the dumpsters. All trash is disposed in dumpsters located in T1 (Compactor/Segregation Area) and T2 (Gate 23, Gate 48, and Gate 25). Flagship does not use dumpster in T2 parking lot near USO.
2. FlagShip cleans the floors and carpets inside the airport, including the gift shops and food courts, and they sweep sidewalks up to the curb on the landside and the airside using a sweeper that belongs to Flagship. They do not clean the baggage make up areas. They are also responsible for sweeping 10 ft from the building along on the land and airside.
3. Pressure Washing (information from Airport's Public Relations Specialist, updated 5/27/15): Flagship performs pressure washing Tuesdays through Saturdays between 11:00 pm and 4:00 am, and is scheduled on a 30 to 45 day rotation. Locations that receive pressure washing include terminal smoking areas, all baggage claim sidewalks, and ten feet from the building to the ramp and compactor areas. FlagShip also power-washes the trash compactor area near the Commuter Terminal, the dumpster area between Terminal 2 East and West, the HMS Host grease container area near Gate 27, and the dumpster area at Terminal 1, and the grease container. Carpet cleaning wastewater is also disposed of at the dewatering bin at the trash compactor area. The Airport Authority works with Flagship to use AC condensation water for the pressure washing operation. The AC condensation water is collected into 55 gallon drums, and once full the water is transferred to the pressure washer reservoirs. In 2014, more than 5,225 gallons of AC condensate was recovered and reused for a variety of purposes in airport maintenance, including pressure washing. FlagShip owns three pressure washers. This equipment is used to power-wash the sidewalks on the landside and the airside. The power washers are stored at Gate 17 and covered with a tarp. There is no set schedule for the three washers that are used. During power washing, water is heated to 200 degrees, which probably cools to 140-150 degrees by the time it reaches the surfaces, and at a pressure of 3,000 psi. The pressure washers used by Flagship are equipped with a water recollection and filtration system. They are designed to collect all residual water, filter, recycle and re-use the water throughout the operation of the equipment. An estimated 80-100 gallons of recovered AC condensate water is used per day washing occurs. The reclaimed AC condensate is not potable water and therefore not a violation of state and city water restrictions. As of October 2015, AC condensate was only collected at the new Green Build T2 gates and the busier T1 gates (not collected at Gate 1 or 2). Before starting the pressure washing operation, Flagship staff locates all storm water drains and covers the areas with berms or mats. They then remove and sweep all trash, debris and cigarette butts. Next, staff will determine the path that the water will run and will funnel the water using berms and bags into the vacuum/reclaim system. Once the job is complete, the wash water is vacuumed up, hoses are drained into the sanitary sewage system at the T1 compactor area and equipment is cleaned. The wash water is vacuumed up by a separate vacuum machine. Water booms are used during this operation to avoid discharges to the storm drains. Wash water is dumped to the dewatering bin at the trash compactor area.
4. Republic (a vendor to SDCRAA) is the company the collects the dumpster from the airport, which also performs a power washing on a schedule that does not coincide with Flagship's.
5. FlagShip also transports and unloads trash/recycling from trash cart system located between Terminal 1 and Terminal 2.
6. Diesel is used to heat water on the power washers; gasoline is used in the engine of the power washers.
7. FlagShip cleans the windows at T2W every 3 to 6 months using FlagShip equipment. All wash waters are collected and disposed of onsite.
8. Flagship uses battery operated pieces of equipment (vacuum, carpet cleaners, hard floor surface cleaners).
9. A truck mounted carpet extractor is used to clean carpets in terminals and is stored at Gate 17. All water is disposed of in T1 sump (via trash compactors).
10. All outdoor storage is at Gate 17 and some indoor storage is at this location as well.
11. Flagship has an oncall contract to pressure wash and scrub along the ramp and apron.
12. Flagship got rid of their pressure washing truck in 2017.
13. Flagship owns 4 trucks and 2 vans. Minor maintenance is done by Flagship maintenance staff under a tented area near

the Cargo buildings. Major maintenance is done offsite.

14. SANCO manages the contract and compliance for Flagship and Siemens. They do not directly oversee activities.

Significant Materials/Activities Potentially Exposed to Storm Water

Potential Pollutant Sources

Fluid leaks
Fuel spills, Fuel transfer
Material loading/unloading
Outdoor apron washdown
Outdoor washdown
Outdoor waste storage
Tank fuel transfer
Trash collection

Potential Pollutants

Battery Acid
Cleaning Solutions
Food Waste
Recyclables
Trash

Best Management Practices Applicable to Facility

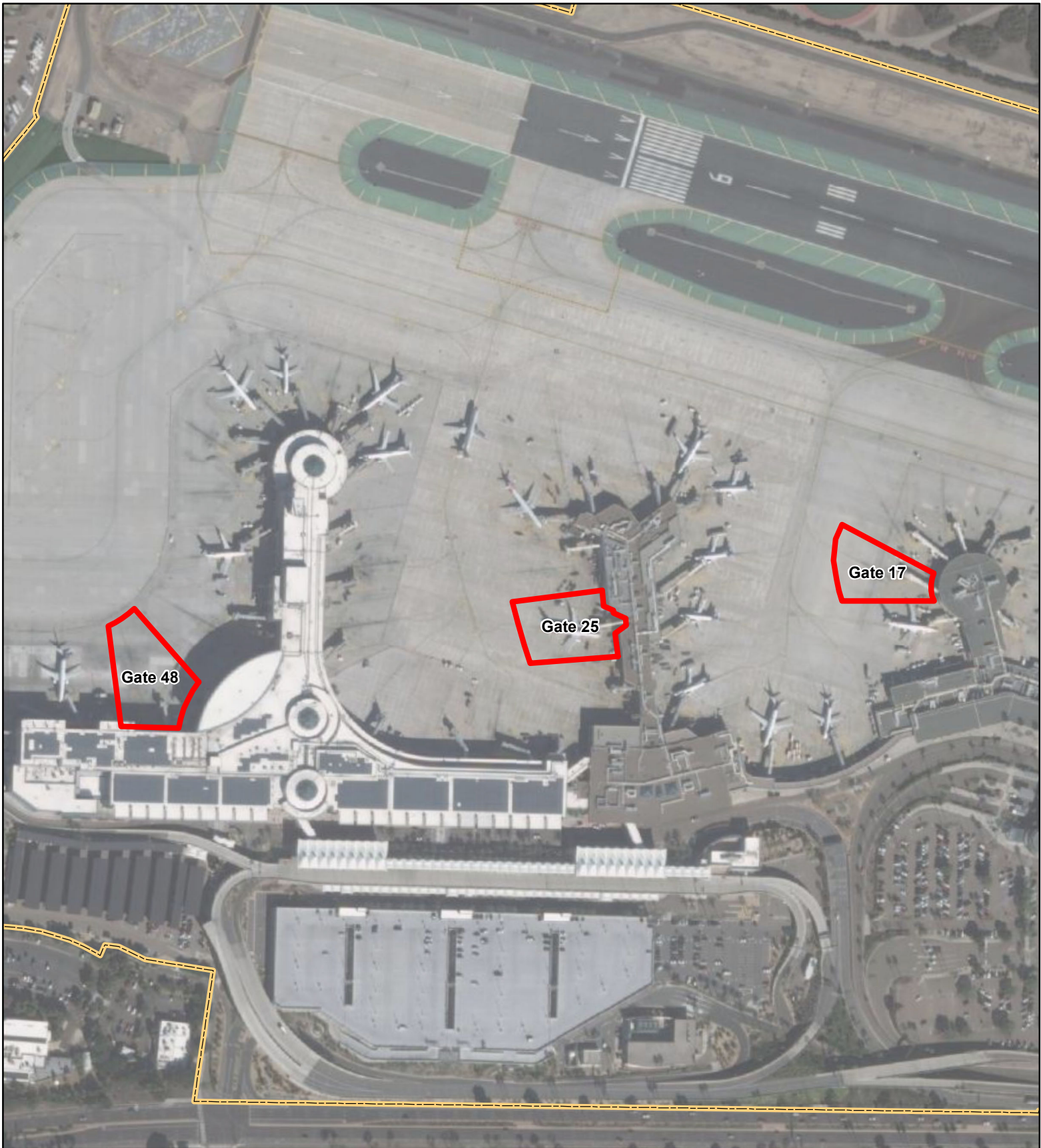
Activities

Non-Storm Water Management
Outdoor Equipment Ops Maintenance Areas
Aircraft, Ground Vehicle & Equipment Maintenance
Aircraft, Ground Vehicle & Equipment Fueling
Aircraft, Ground Vehicle & Equipment Cleaning
Outdoor Loading/Unloading of Materials
Outdoor Material Storage
Waste Handling & Disposal
Building & Ground Maintenance
Employee Training
Outdoor Wash down/Sweeping
Housekeeping
Safer/Alternative Products
Spill Prevention, Control & Clean Up

BMPs

SC01 - 1, 2, 4
SC02A - 1, 2
SC02B - 1, 2, 3, 4, 5, 6, 7, 8, 11
SC03 - 1, 2, 4, 5, 6, 7
SC04 - 1, 2, 3, 5, 6
SC06 - 1, 2, 3, 6, 7
SC07 - 1, 2, 3, 7, 12, 13
SC08 - 1, 2, 3, 4, 5, 7, 8, 9, 10, 11, 12, 13
SC09 - 4, 7
SC10 - 1, 2, 3, 4
SC12 - 2, 3, 4, 5, 6, 7, 8, 9, 10, 11, 12
SC18 - 1, 2, 3, 4, 5, 6, 7, 8, 9
SC19 - 1, 2
SR01 - 1, 2, 3, 4, 5, 6, 7, 8, 9, 10

* Appendix B provides descriptions for each BMP category.



LEGEND

Operating Area(s) SDIA Boundary



Service Layer Credits: Source: Esri, Maxar, GeoEye, Earthstar Geographics, CNES/Airbus DS, USDA, USGS, AeroGRID, IGN, and the GIS User Community

PROJECT NO.:	5025-18-2002
DATE:	FEBRUARY 2022
DRAWN BY:	CAB
CHECKED BY:	AA/NP



SAN DIEGO INTERNATIONAL AIRPORT

**FlagShip
Operating Areas**

FIGURE

E-17