

Cartwright Termite & Pest Control, Inc

SIC Codes 7342

Primary Activity Facility Maintenance

Drainage Areas 8

Nearest MS4 Inlet < 200 ft.

Address 3225 North Harbor Dr.
San Diego, CA 92101

Contact Information

Jim Patterson Pest Control Manager

P 6199472625 C

Jim.patterson@cartwrightsdia.com

Rob Cartwright CFO

P 6192502013 C

rob@cartwright.sdcoxmail.com

Facility Description and Activities

1. Material storage (pesticides) is off-site at headquarters at 1376 Broadway El Cajon 92021.
2. Materials used for operational purposes, pesticides and relevant applicators, are stored in a covered container on Cartwright trucks; those trucks are parked at the headquarters.
3. Miscellaneous equipment stored on-site behind fence at Gate 12 and are protected by overhead building awning. Miscellaneous equipment include rodent control supplies, shop vac, ladders, etc.
4. Spill kit is readily available on-site, within the office at Gate 12 and are also stored on the Cartwright trucks.
5. Trucks that are used by Cartwright daily are for meeting with tenants, inspecting pest control equipment, and other day-to-day tasks (not pest control applications) and are inspected daily for leaks and are well kept.

Significant Materials/Activities Potentially Exposed to Storm Water

Potential Pollutant Sources

Drainage system maintenance
Fluid leaks
Outdoor waste storage
Pesticide usage
Tank fuel transfer
Trash collection

Potential Pollutants

Metals
Oil & Grease
Pesticides/Herbicides

Best Management Practices Applicable to Facility

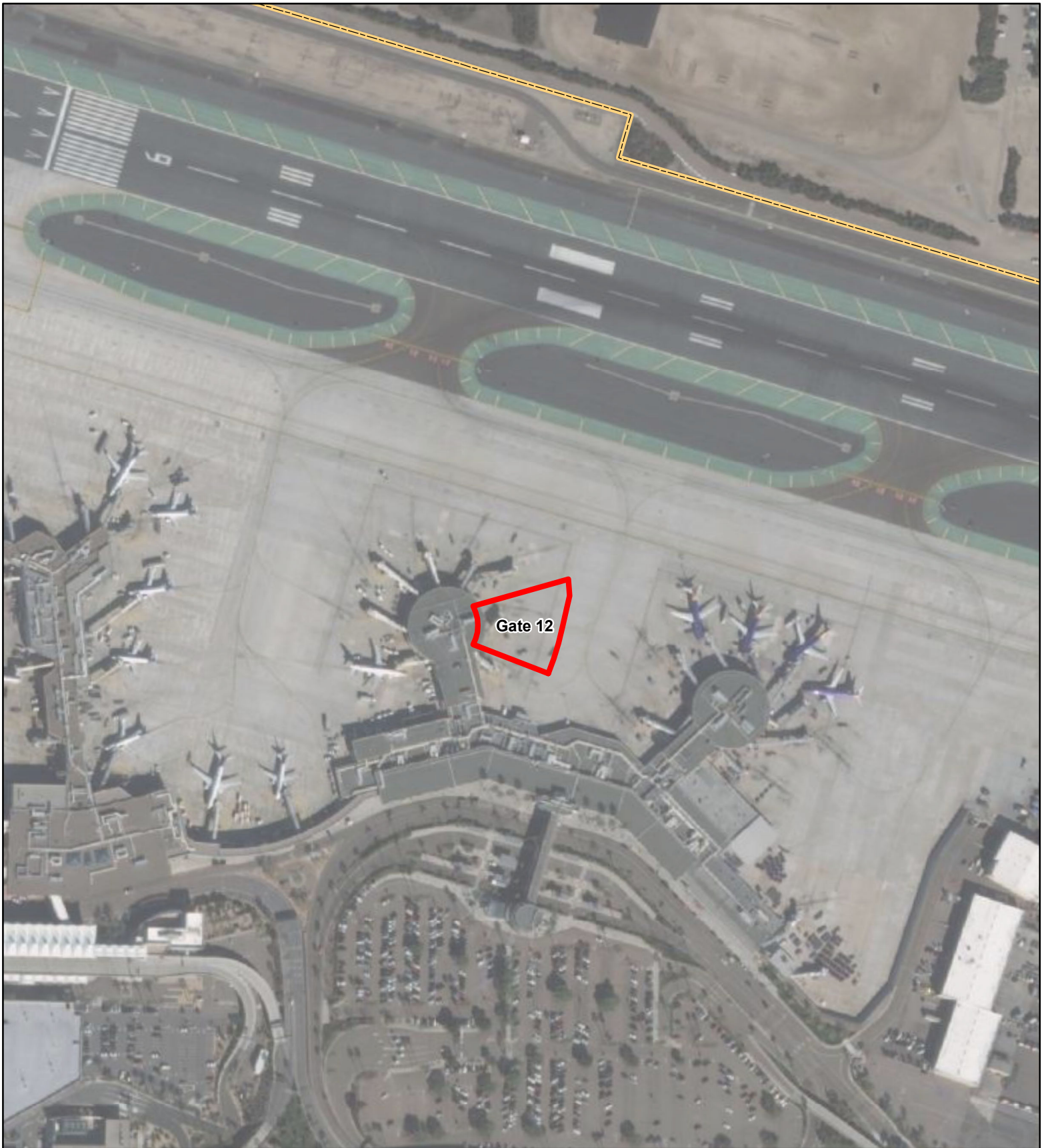
Activities

Non-Storm Water Management
Outdoor Equipment Ops Maintenance Areas
Aircraft, Ground Vehicle & Equipment Maintenance
Outdoor Material Storage
Waste Handling & Disposal
Building & Ground Maintenance
Employee Training
Drainage System Maintenance
Housekeeping
Safer/Alternative Products
Spill Prevention, Control & Clean Up



BMPs

SC01 - 1, 2, 4
SC02A - 1, 2
SC02B - 1, 2, 4, 5, 6, 11
SC07 - 1, 2, 7, 11, 12, 13
SC08 - 1, 2, 3, 4, 5, 6, 8, 9, 10, 11, 12, 14
SC09 - 3
SC10 - 1, 2, 4
SC17 - 2
SC18 - 1, 2, 3, 4, 5, 6, 7, 8, 9
SC19 - 1, 2
SR01 - 1, 2, 3, 4, 5, 6, 7, 8, 9, 10

* Appendix B provides descriptions for each BMP category.



LEGEND

 Operating Area(s)  SDIA Boundary



Service Layer Credits: Source: Esri, Maxar, GeoEye, Earthstar Geographics, CNES/Airbus DS, USDA, USGS, AeroGRID, IGN, and the GIS User Community

PROJECT NO.:	5025-18-2002
DATE:	FEBRUARY 2022
DRAWN BY:	CAB
CHECKED BY:	AA/NP



SAN DIEGO INTERNATIONAL AIRPORT

**Cartwright
Operating Areas**

FIGURE

E-11