

Allegiant Air

SIC Codes 4512, 4522

Primary Activity Passenger Carrier

Drainage Areas 8

Nearest MS4 Inlet 200 - 1000 ft.

Address 3707 North Harbor Dr. T2E
San Diego, CA 92101

Contact Information

Ken Sturgill General Manager

C (775) 771-0699

ksturgill@atsstl.com

John Gordon Manager - Regional

P (702) 830-8842 C (360) 355-7581

john.gordon@allegiantair.com

Facility Description and Activities

1. All equipment maintenance is done by ATS mobile. Daily vital fluid checks are performed by ATS staff and monthly Preventive Maintenance Inspections are conducted by ATS Mobile. ATS is a subtenant to Allegiant.
2. Fueling is conducted by Menzies at the Gates. ATS conducts monthly station safety audits which include observing fueling. ATS requests a poundage of fuel to be put into the aircraft prior to each fueling.
3. Cleaning of vehicles is done at the washrack. No aircraft cleaning is performed at SIDA.
4. All aircraft maintenance is performed by PAM (Flightline).
5. Tenant does not have a permanent gate, but frequently uses Gate 13 where they RON.
6. Potable water is flushed for 30 seconds on the ramp and allowed to evaporate.
7. ATS is a subtenant of Allegiant and performs services above the wing and below the wing for Allegiant.
8. Flagship conducts trash pickup service for tenant.

Significant Materials/Activities Potentially Exposed to Storm Water

Potential Pollutant Sources

- Aircraft sanitary services
- Cargo handling
- Equipment storage
- Fluid leaks
- Fuel spills,Fuel transfer
- Material loading/unloading
- Outdoor waste storage
- Potable water flushing
- Tank fuel transfer
- Trash collection

Potential Pollutants

- Anti Freeze
- Battery Acid
- Cleaning Solutions
- Fuel
- Fuel (Diesel)
- Hydraulic Fluids
- Lavatory Chemical Wastes
- Lavatory Chemicals
- Lavatory Wastes
- Lubricants
- Metals
- Oil & Grease
- Rubber Particulates
- Sediment
- Trash

Best Management Practices Applicable to Facility

Activities

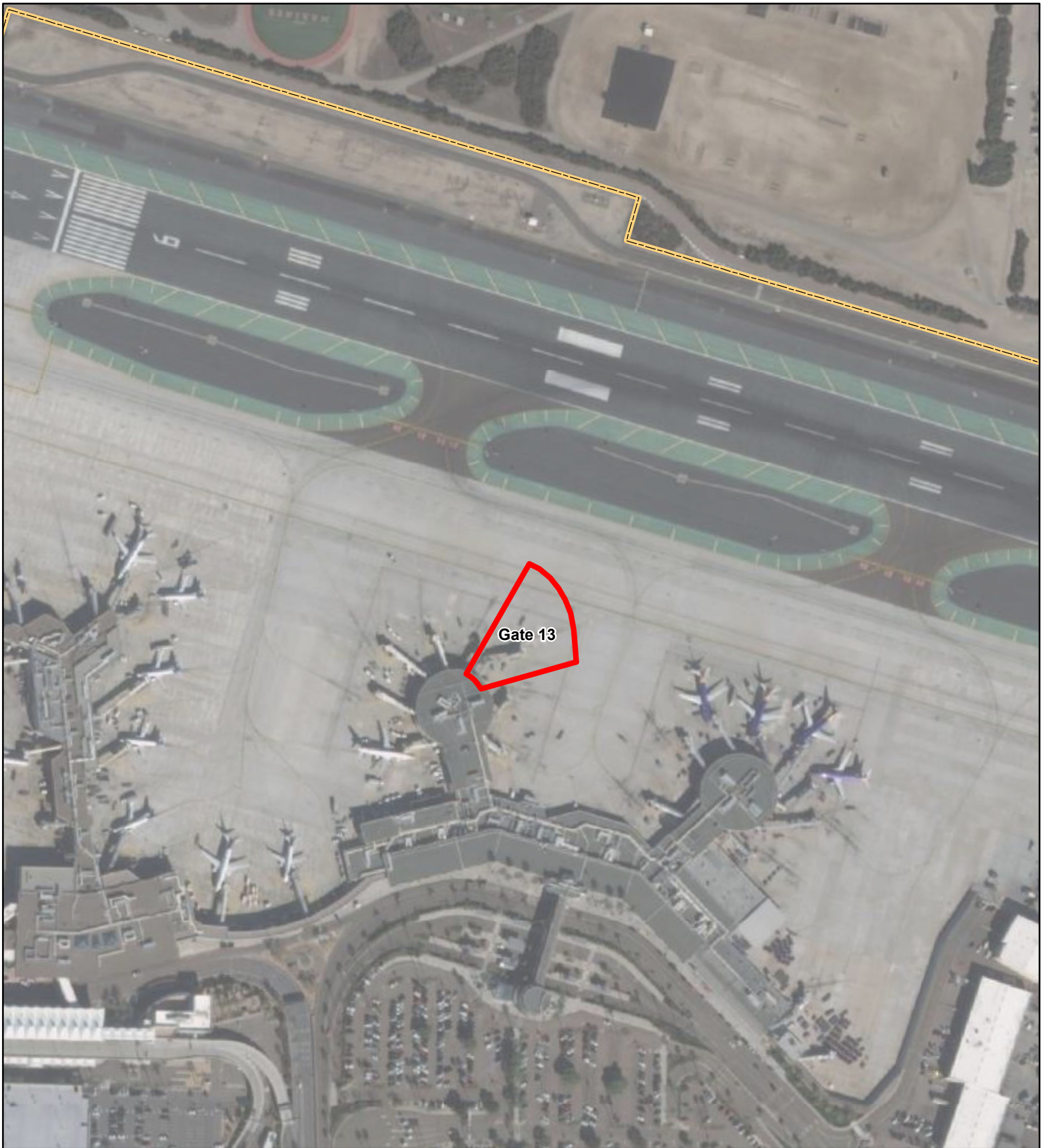
- Non-Storm Water Management
- Outdoor Equipment Ops Maintenance Areas
- Aircraft, Ground Vehicle & Equipment Maintenance
- Aircraft, Ground Vehicle & Equipment Fueling
- Aircraft, Ground Vehicle & Equipment Cleaning

BMPs



- SC01 - 1, 2, 4, 7
- SC02A - 1, 2
- SC02B - 1, 2, 3, 4, 5, 6, 7, 8, 10, 11, 12, 13
- SC03 - 1, 2, 4, 5, 6, 8
- SC04 - 1, 2, 3, 5

Outdoor Loading/Unloading of Materials	SC06 - 1, 2, 3, 4, 6, 7
Outdoor Material Storage	SC07 - 1, 2, 3, 7, 11, 12
Waste Handling & Disposal	SC08 - 1, 2, 3, 4, 5, 8, 9, 10, 11, 12, 14
Employee Training	SC10 - 1, 2, 3, 4
Lavatory Service Operation	SC11 - 3, 4, 5, 6, 7, 8, 9, 10, 11
Potable Water System Flushing	SC14 - 1, 2
Housekeeping	SC18 - 1, 2, 3, 4, 5, 6, 7, 8, 9
Safer/Alternative Products	SC19 - 1, 2
Spill Prevention, Control & Clean Up	SR01 - 1, 2, 3, 4, 5, 6, 7, 8, 9

* Appendix B provides descriptions for each BMP category.



LEGEND

 Operating Area(s)  SDIA Boundary



Service Layer Credits: Source: Esri, Maxar, GeoEye, Earthstar Geographics, CNES/Airbus DS, USDA, USGS, AeroGRID, IGN, and the GIS User Community

PROJECT NO.:	5025-18-2002
DATE:	FEBRUARY 2022
DRAWN BY:	CAB
CHECKED BY:	AA/NP



SAN DIEGO INTERNATIONAL AIRPORT

**Allegiant
Operating Areas**

FIGURE

E-5