

**Appendix B – Best Management Practices**

<b>BMP SC17</b>		<b>STORM DRAIN MAINTENANCE</b>	
<p><b>PURPOSE:</b> Maintain catch basins, storm water inlets, and other storm water conveyance structures on a regular basis to remove pollutants, reduce high pollutant concentrations during the first flush of storms, prevent clogging of the downstream conveyance system, restore catch basins’ sediment trapping capacity, and ensure the system functions properly hydraulically to avoid flooding.</p>		<p><b>TARGETED ACTIVITIES:</b></p> <ul style="list-style-type: none"> <li>➔ Storm water conveyance system</li> </ul>	
<p><b>POLLUTION PREVENTION:</b></p>		<p><b>POLLUTANTS of CONCERN:</b></p>	
<p><input type="checkbox"/> Implement the following pollution prevention practices and BMPs to remove pollutants, sediment, and debris from the storm water collection system:</p>	<p><input type="checkbox"/> Look for evidence of illegal dumping, illegal discharges or illicit connections during routine inspection, cleaning, and maintenance of the storm drainage system and drainage structures.</p>	<ul style="list-style-type: none"> <li>➔ Trash</li> <li>➔ Suspended solids</li> <li>➔ Hydrocarbons</li> <li>➔ Oil and grease</li> <li>➔ Heavy Metals</li> <li>➔ Bacteria</li> <li>➔ Organics</li> </ul>	
<p><b>OPERATIONS:</b></p>		<p><b>APPLICABLE TENANTS/ DEPARTMENTS:</b></p>	
<p><b>Sub-BMPs</b></p> <ul style="list-style-type: none"> <li>- 01 <input type="checkbox"/> Stencil storm drains with “No Dumping” messages.</li> <li>- 02 <input type="checkbox"/> Conduct routine self-inspections of the storm drainage system. The Authority should inspect the entire MS4 at least annually, between the dates of May 1 and September 30.</li> <li>- 03 <input type="checkbox"/> Use appropriate measures to prevent discharges during MS4 cleaning and maintenance.</li> <li>- 04 <input type="checkbox"/> Clean and maintain storm drain inlets, catch basins, pipes, and other conveyance structures before the wet season and as needed.</li> <li>- 05 <input type="checkbox"/> Clear open channels of accumulated litter in a timely manner.</li> <li>- 06 <input type="checkbox"/> Properly dispose of all accumulated sediments, contaminants, debris and wastewater from cleaning and maintenance activities.</li> <li>- 07 <input type="checkbox"/> Maintain records for all inspections, cleaning, and maintenance, including the quantity of waste removed.</li> </ul>	<ul style="list-style-type: none"> <li>➔ ABM</li> <li>➔ ACE</li> <li>➔ ARFF</li> <li>➔ Avis</li> <li>➔ Cartwright</li> <li>➔ Delta</li> <li>➔ Kirschcohn</li> <li>➔ Menzies Fuel Farm</li> <li>➔ Port of San Diego</li> <li>➔ SANCO</li> <li>➔ SDCRAA</li> <li>➔ Signature</li> <li>➔ SP Plus</li> </ul>		
<p><b>STRUCTURAL TREATMENT BMPs:</b> Refer to BMP TC01 for information on structural treatment BMPs.</p>			
<p><b>BMP FREQUENCIES/EQUIPMENT/TOOLS:</b> Storm drain maintenance frequencies are described in Section 6.0. Equipment/tools to implement BMPs include stenciling equipment, measuring devices, flashlights, vactor trucks, spill kits, brooms, and drums.</p>			

**Appendix B – Best Management Practices**

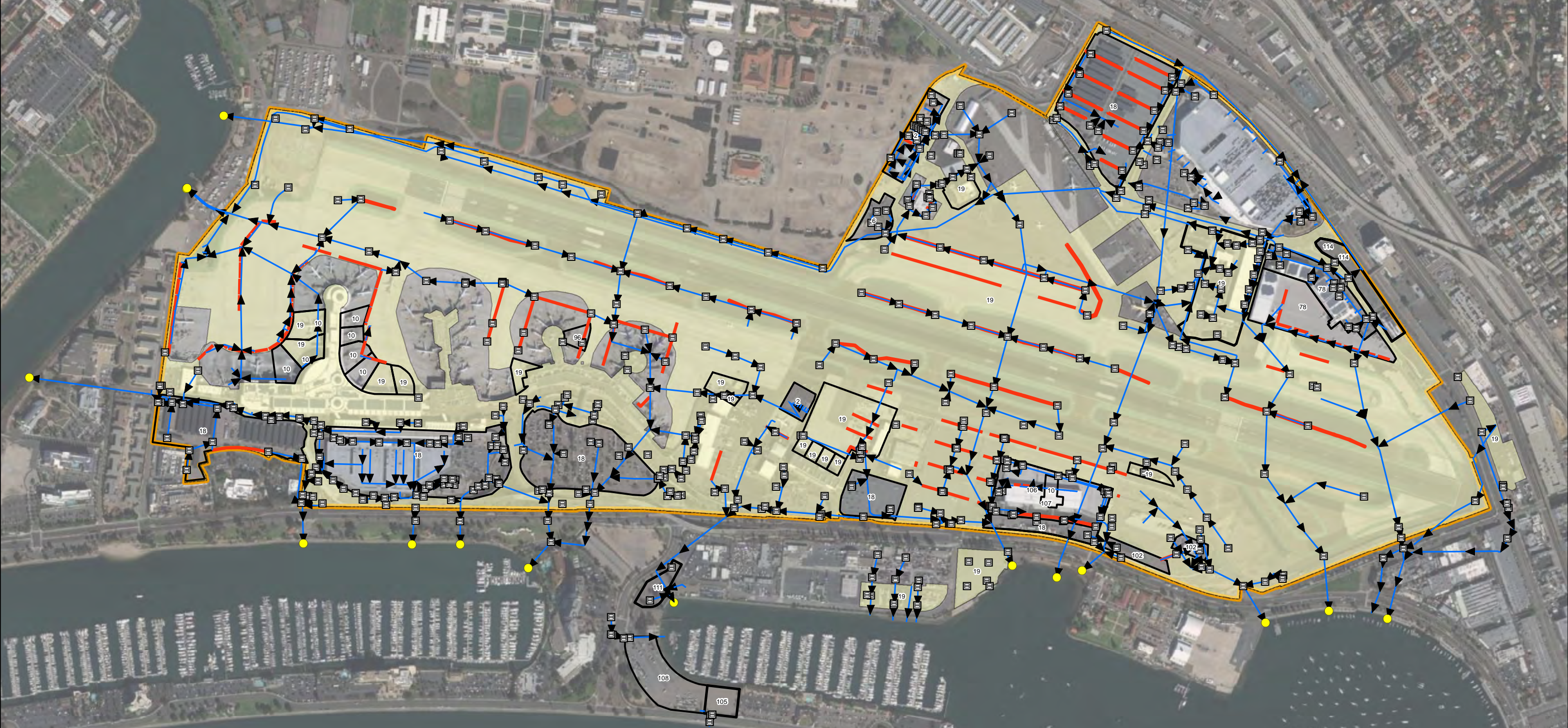
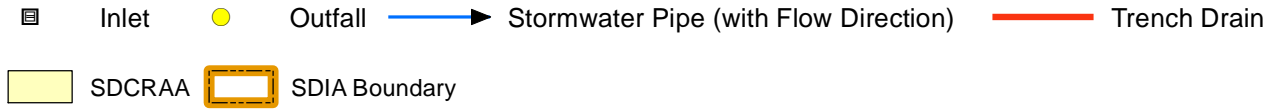
<b>BMP SC17</b>	<b>STORM DRAIN MAINTENANCE</b>	
<b>AUTHORIZED LOCATIONS FOR STORM DRAIN MAINTENANCE:</b>		
	<input type="checkbox"/> To implement BMPs for the removal of pollutants, sediment, and debris from the storm drain system, maintenance of the storm drain system will be performed at the designated areas as shown on the attached map.	
Date:		Version: 2.0

**Appendix B - Best Management Practices**

Intentionally Left Blank

**Tenants Implementing SC-17 BMP:  
Drainage System Maintenance**

- |                       |                |                  |             |                         |
|-----------------------|----------------|------------------|-------------|-------------------------|
| 2 - Menzies Fuel Farm | 18 - ACE       | 96 - Cartwright  | 106 - ASB   | 111 - AVIS              |
| 6 - ARFF              | 19 - SDCRAA    | 102 - SP Plus    | 107 - SANCO | 114 - Port of San Diego |
| 10 - Delta            | 78 - Signature | 105 - Kirschcohn | 108 - ABM   |                         |



Service Layer Credits: Source: Esri, Maxar, GeoEye, Earthstar