

Destination Lindbergh:

Item A

Intermodal Transportation Center (ITC) Update



Background

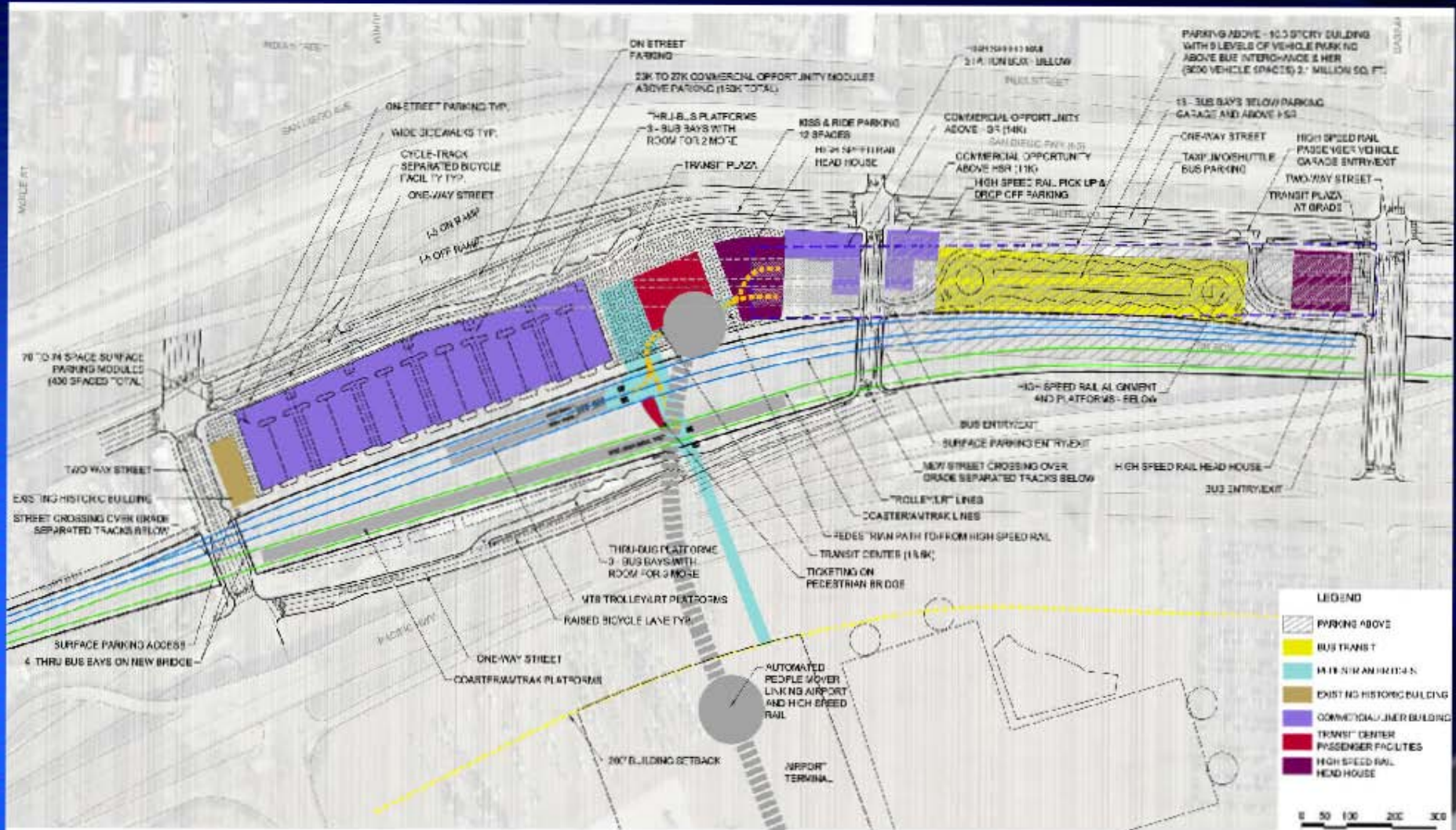
**Destination Lindbergh Master Plan (2009)
recommended:**

- **Northside airport terminal complex**
- **Adjacent intermodal transportation facility (ITC) facility to provide direct connections from transit/Amtrak/High Speed Rail**
- **Direct freeway ramps from I-5**

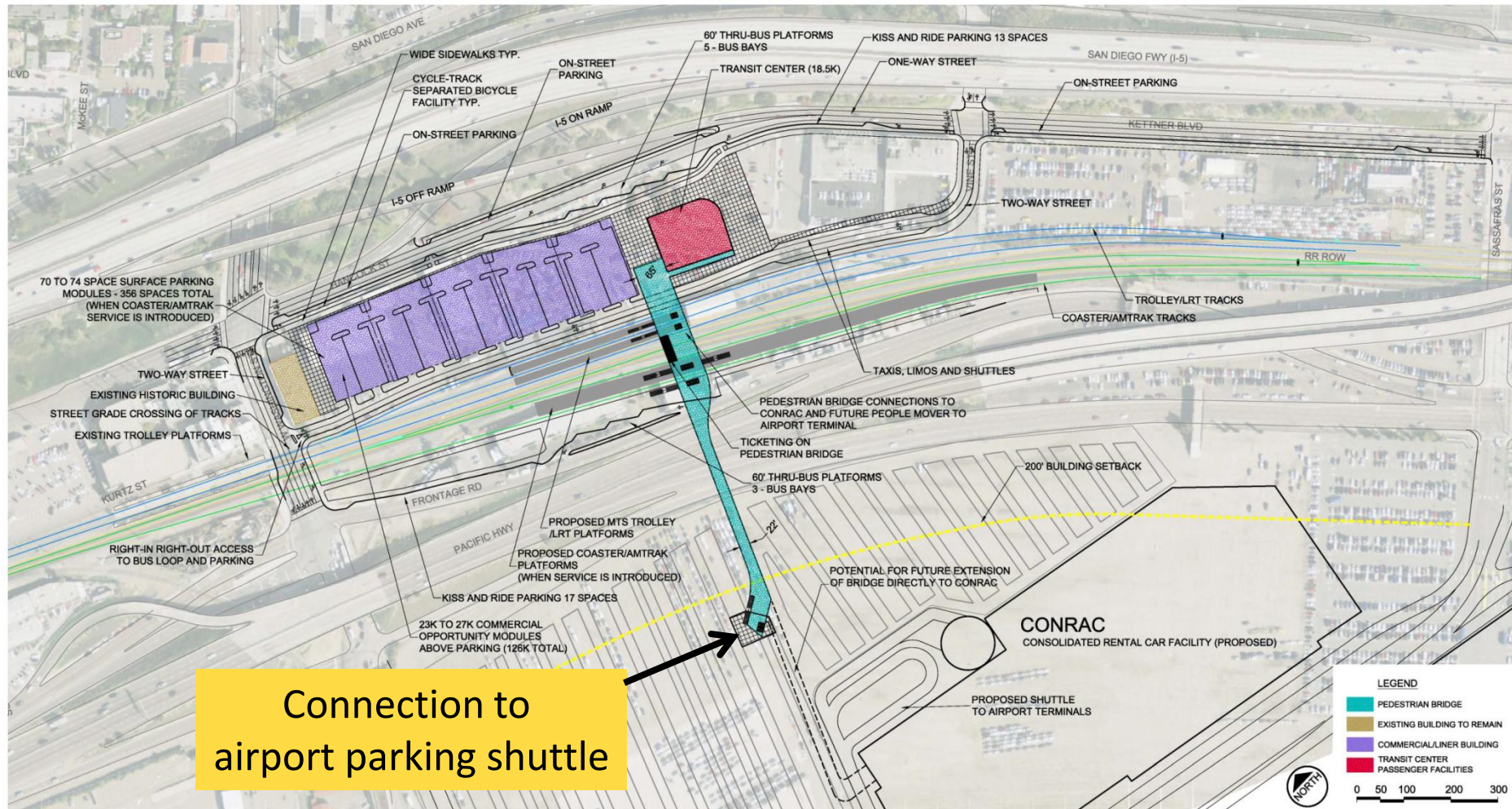
Long-Range ITC Facility

- ITC would serve as a regional transfer center and access to airport for:
 - Trolley
 - Local Bus/Rapid Bus
 - Coaster
 - Amtrak
 - CA High Speed Rail
- Paid parking for Amtrak and High Speed Rail

ITC - Long Range Site Concept



ITC – Opening Day Concept



ITC – Opening Day Perspectives



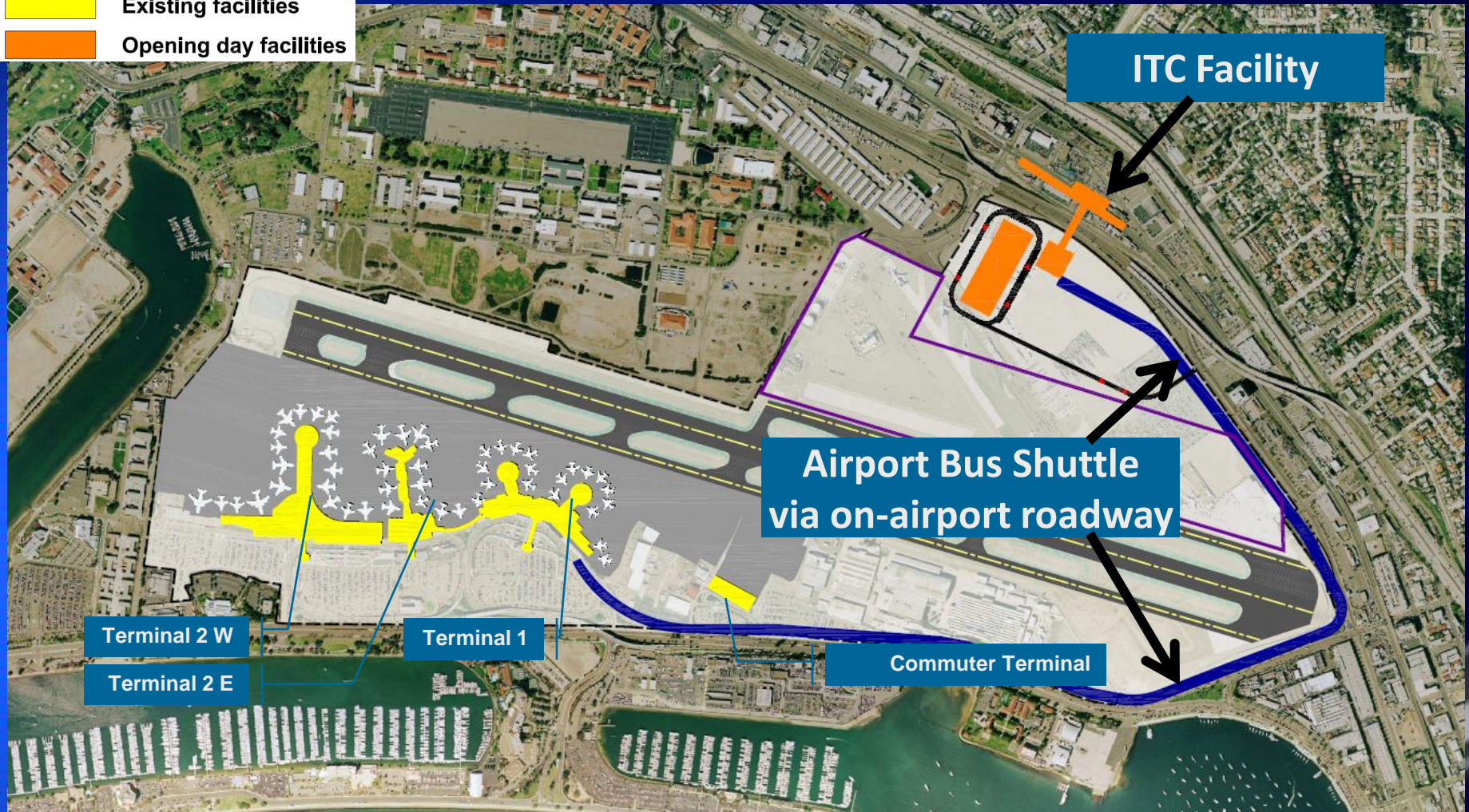
Draft



IBI Group
SANDAG ITC

2015 Opening Day Facilities

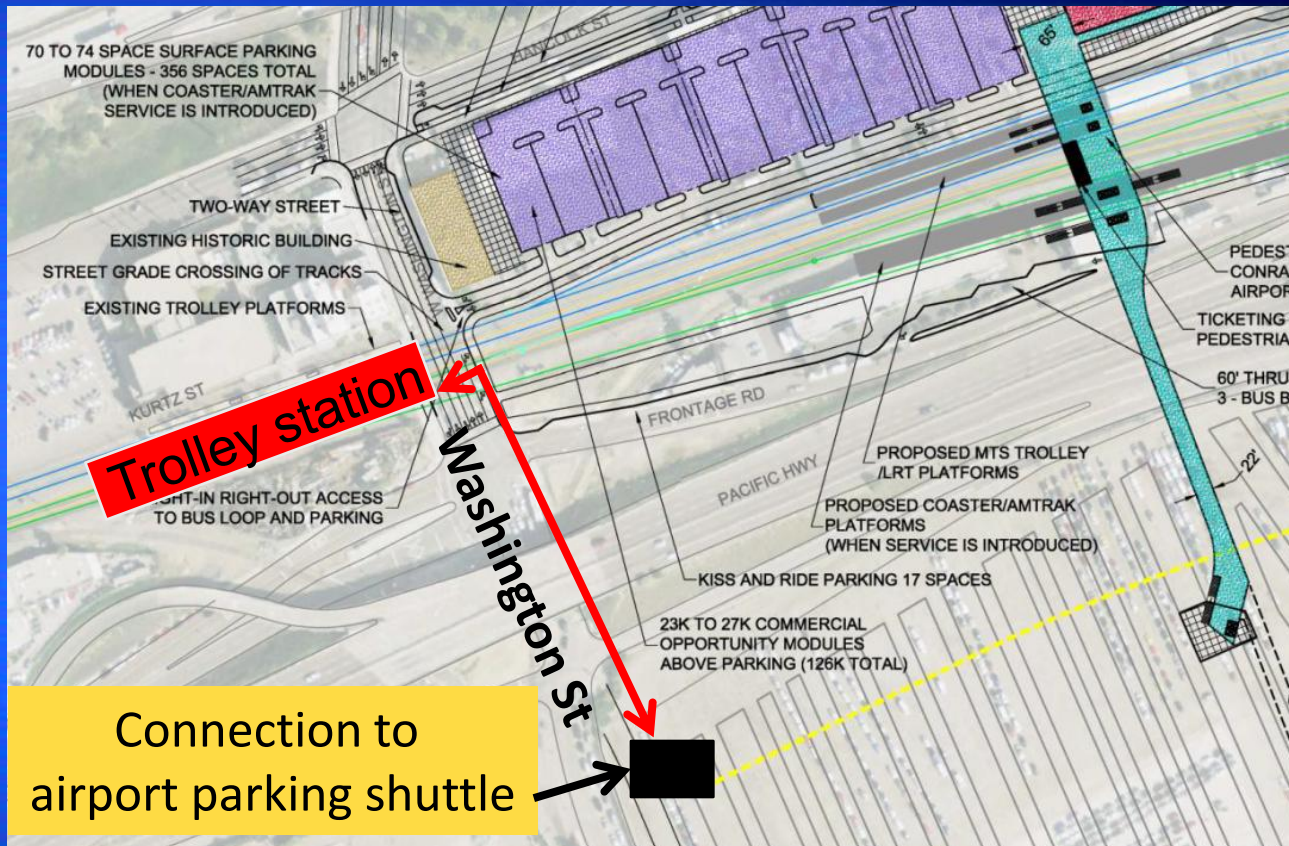
- Existing facilities
- Opening day facilities



ITC Site Planning Status

Additional Opening Day Scenarios

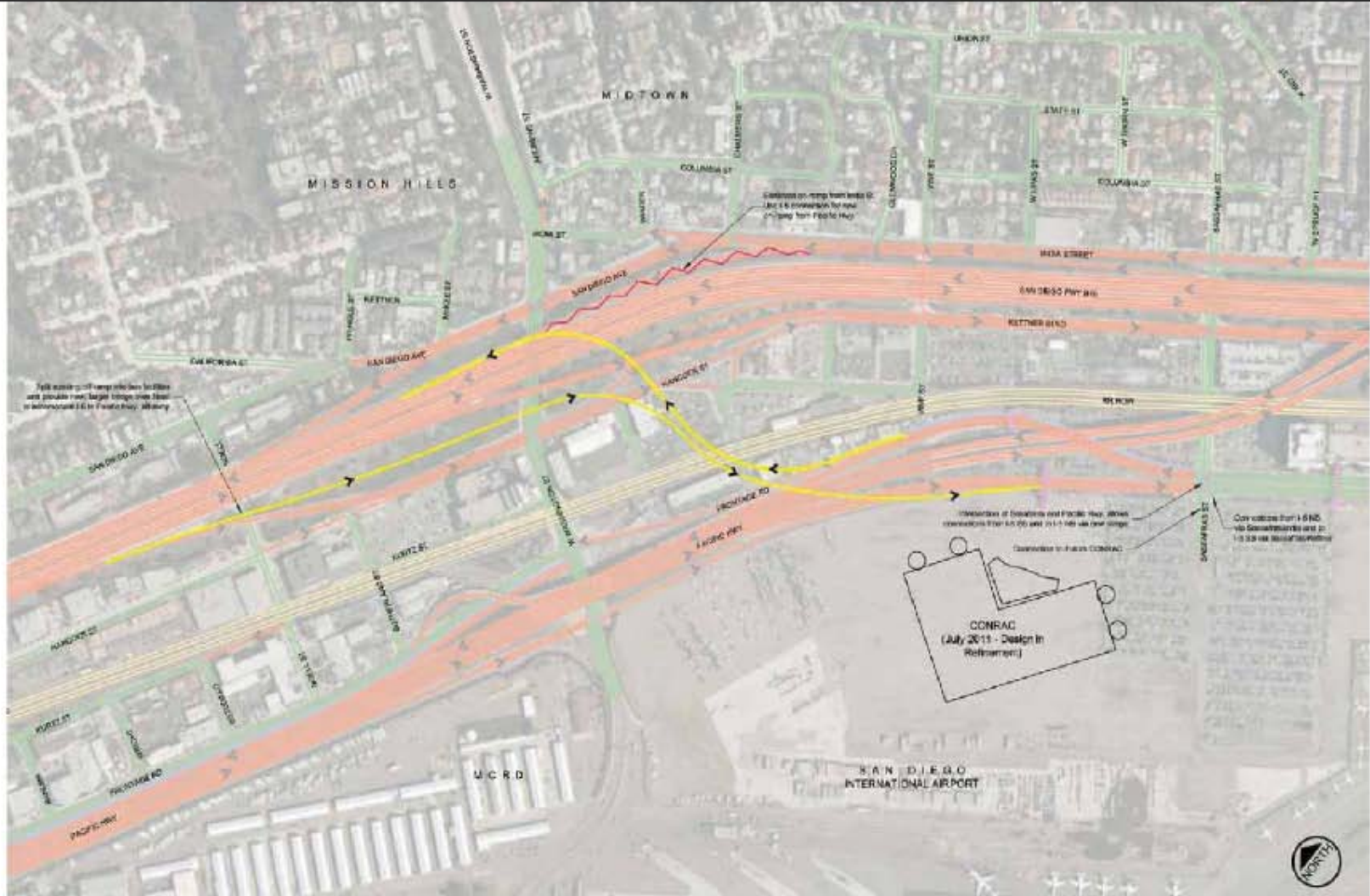
Connect existing Washington St trolley station to airport parking via enhanced pedestrian along Washington St or extend airport shuttle to trolley station



Freeway Connector Ramps

- Improve access to airport; relieve congestion on local streets
- Facilitates additional Amtrak/Coaster/Trolley service without impacting local street traffic
- Two ramp design concepts under study:
 - Direct Connectors
 - Single Point Urban Interchange

Connector Ramp Concept

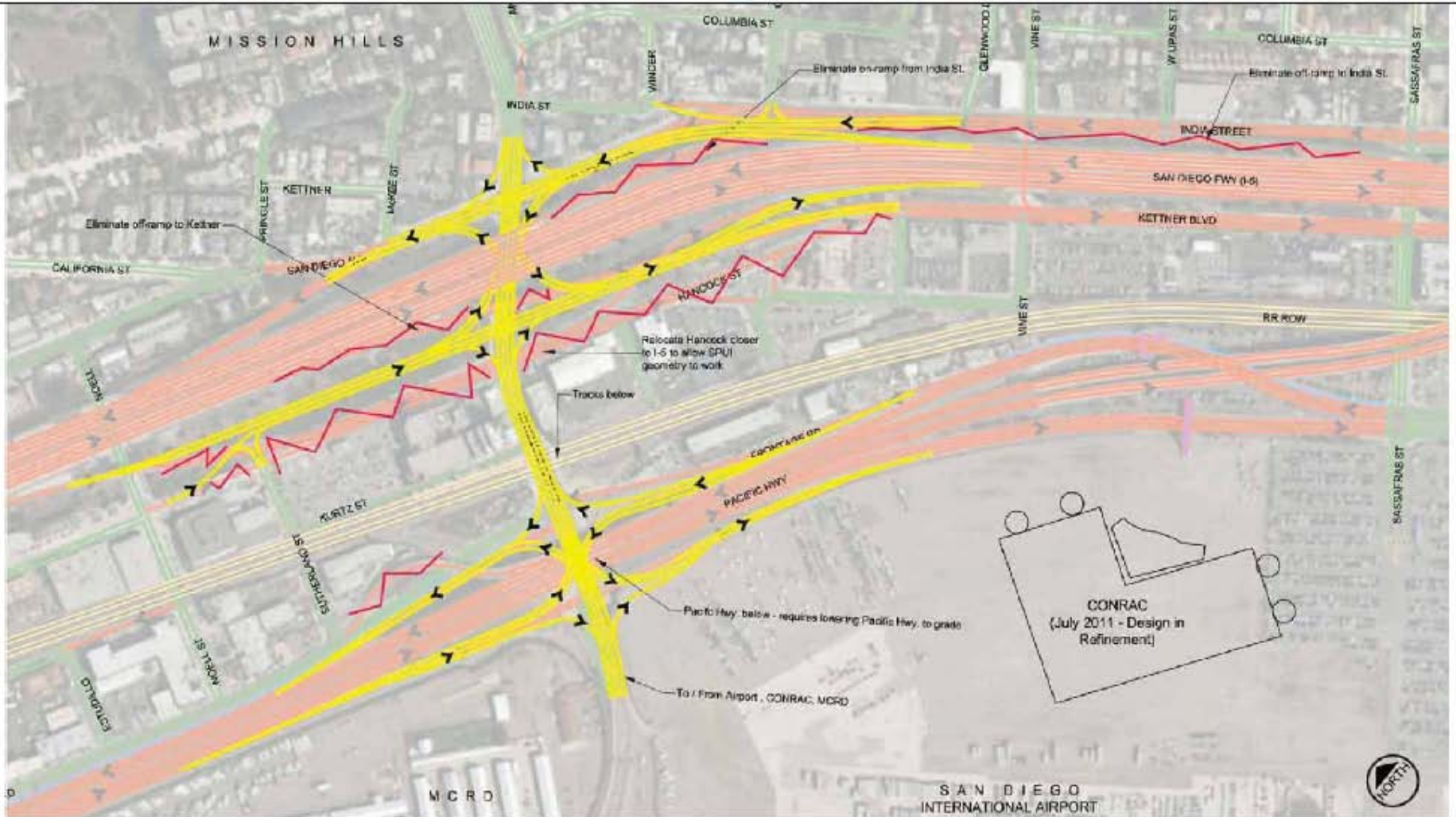


SANDAG Intermodal Transportation Center/Destination Lindbergh Interstate 5 Ramp Design

Draft



Single Point Urban Interchange (SPUI) Concept



SANDAG Intermodal Transportation Center/Destination Lindbergh Interstate 5 Ramp Design

Draft



Next Steps

- Refine Opening Day ITC scenarios
- Complete analysis of direct freeway connector concepts
- Status update to SANDAG Transportation Committee in September
- Sets stage for formal environmental studies (currently unfunded)
- Participate in Airport Development Plan working group

Destination Lindbergh: Intermodal Transportation Center (ITC) Update

