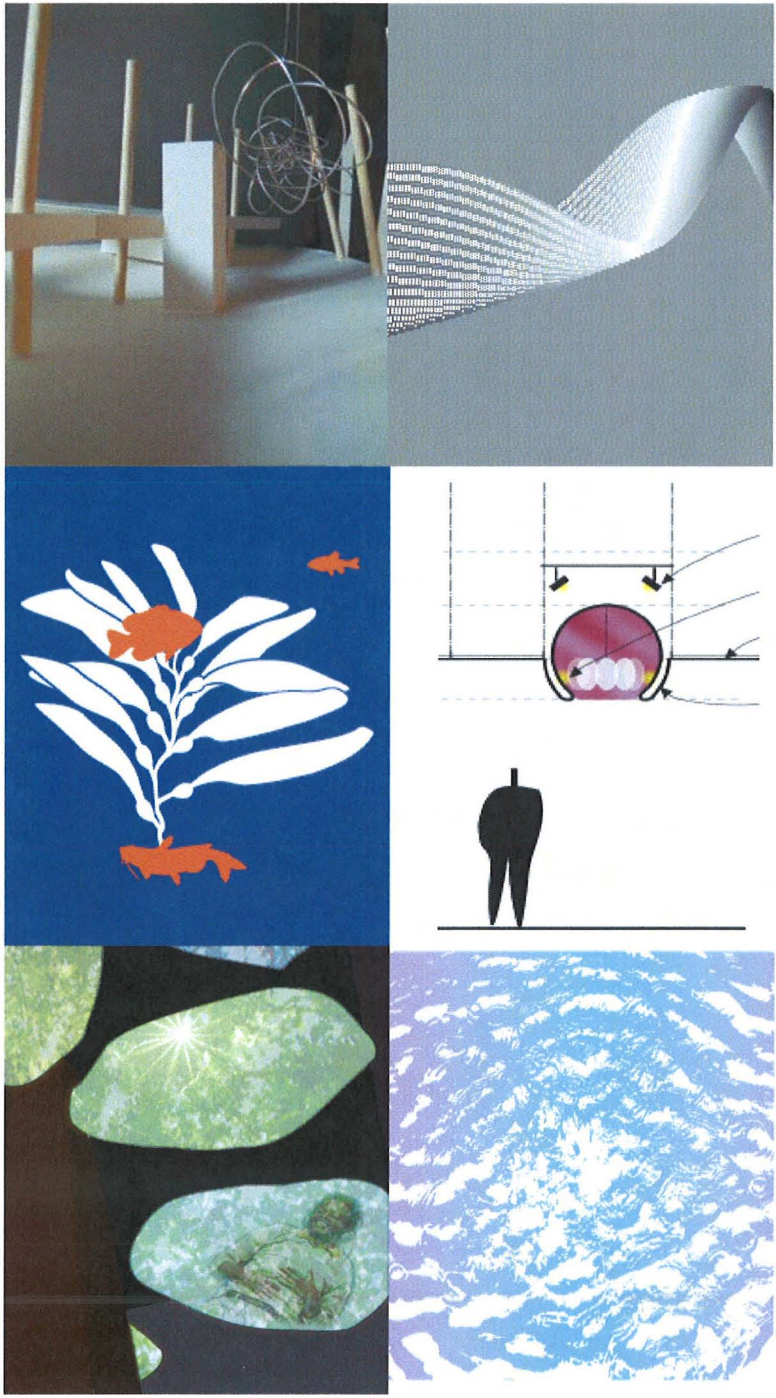


San Diego International Airport Art Program

Item A

UPDATE



Public Art
February 9, 2012

Constance Y. White

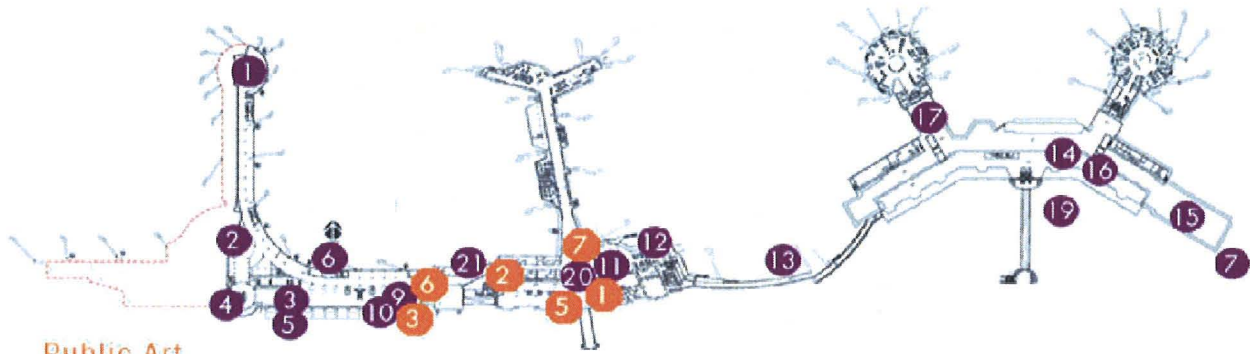
Art Program Manager



San Diego
International Airport
Art Program

arrive depart be inspired

art.san.org - While You're Here



Public Art

- 1 Water & Sun
Christopher Lee
Terminal 2, second floor north concourse rotunda
 - 2 Sea Rhythms
Terry Thornsley
Post-security
Terminal 2, upstairs at marketplace rotunda fountain
 - 3 Seeshells
Mary Lynn Dominguez
Pre-Security
Terminal 2, entrance walls at the restroom facilities
 - 4 Wind Dance and Sunlight Juxtaposed
Joan Irving
Pre-security
Terminal 2, upper entry rotunda, 2nd floor, west end wall
 - 5 At the Gate
Gary Hughes
Pre-security
Terminal 2, west end of baggage claim area
 - 6 San Diego: Gateway of the Americas
Thomas J. Erhardt and other artists
Post-security
Terminal 2, second floor, upper open corridor
 - 7 Guillermo
Steve Bartlett
Pre-security
Terminal 1, exterior Terminal 1 relocated to east curbside
 - 8 Lucky/Spirit
John J. Whalen
Pre-security
Commuter Terminal, east exterior wall of building
 - 9 The "Spirit of St. Louis" Reproduction
San Diego Aerospace Museum
Pre-security
Terminal 2, baggage claim area
 - 10 Lindbergh Bust
Paul Felde
Pre-security
Terminal 2, east baggage claim area
- * Charles A. Lindberg:
The Boy and the Man
Paul T. Granlund

- 11 Continents
Italo Scanga
Pre-security
Terminal 2, International Gates, 1st floor
 - 12 Tree Lines
Gail Roberts
Pre-security
Terminal 2, International Gates, 2nd floor
 - 13 Drifting Beyond Control
Carolyn Breaksma
Pre-security
exterior pedestrian corridor between Terminals 1 & 2
 - 14 Sandcast
Charles R. Faust
Pre-security
Terminal 1, adjacent to Food Court
 - 15 The Traveler
Brett O'Connell and Kyra Sheker
Post-security
Terminal 1, Gate 1A
 - 16 Winds of Change
Mark Richmond
Pre-security
Terminal 1
 - 17 In Flight
Mike Masdel
Post-security
Terminal 1
 - 18 Time Interwoven
Christie Beniston
Pre-security
Commuter Terminal
 - 19 Pacific Flyaway
Anne Mudge
Pre-security
Terminal 1
 - 20 Afflicted Mementos
La Curva Estudios
Pre-security
 - 21 Light Waves
Deanne Sebeck
Terminal 2, up & downstairs along pedestrian connectors
- * In Search of Wilderness
Les Perhecs

Temporary & Rotating Exhibits

- 1 Pre-security
Terminal 2 east
- 2 Post-security
Terminal 2, 2nd floor, portrait corridor
- 3 Post-security
Terminal 2, east baggage claim
- 4 Pre-security
Commuter Terminal
- 5 Pre-security
Terminal 2 east
- 6 Post-security
Terminal 2, 2nd floor, open corridor
- 7 Post-security
Terminal 2 east, Gate 22



*These pieces are currently in storage and will be reinstalled as part of the Green Build program

Q
A

What is the Site and Opportunity Plan?

1. **Guide** to maximize collaboration process
2. **Vision** for public art opportunities specific to this airport
3. **Flexibility** to adapt opportunities as the building program develops and changes
4. **Acquire** a unique collection of integral artwork seamless with building design

Approach

Commission artists rather than purchase artworks

Integrate artwork specific to a certain site as a result of the **collaboration** between artists and design team

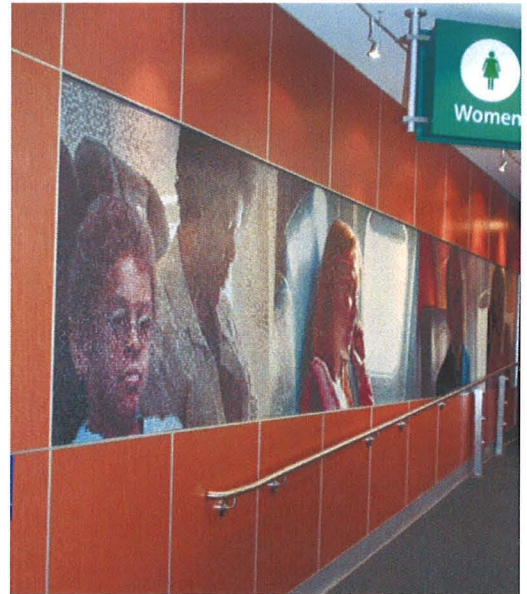
Special Consideration

In Flight

Mike Mandel

Southwest Rotunda and Restroom
Entry

March 2008



Special Consideration

Winds of Change
Mark Richmond
Southwest Ticket Lobby
February 2008



Special Consideration

The Traveler

Brett O'Connell & Kira Sheker

Gate 1A

April 2009



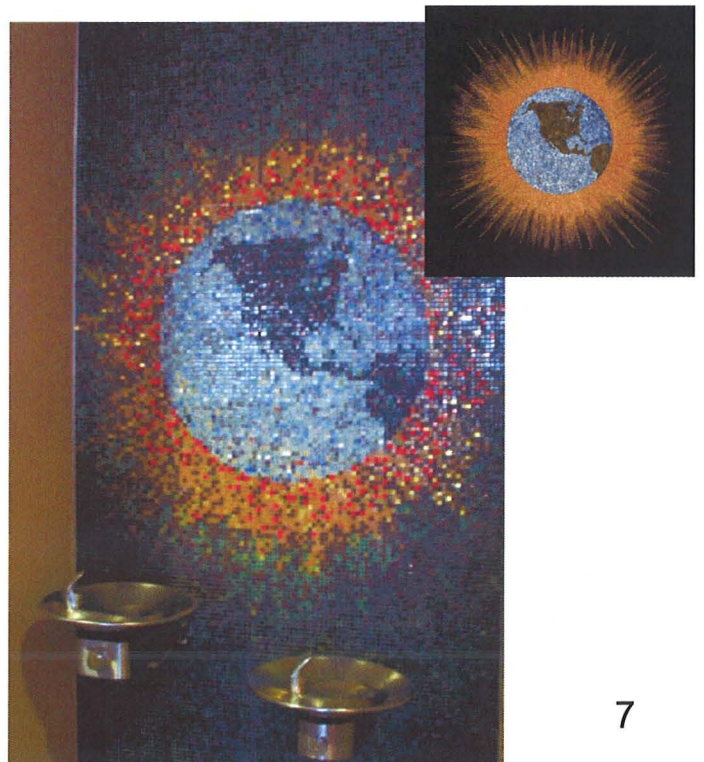
Though we travel the world in search of the beautiful, we must carry it with us, or we find it not.



Capital Improvement Program

Special Consideration

Ben Darby – Terminal 1
Rin Colabucci – Terminal 1
Santos Orellana – Terminal 2
Charlotte Bird – Terminal 1
April 2011



Capital Improvement Program



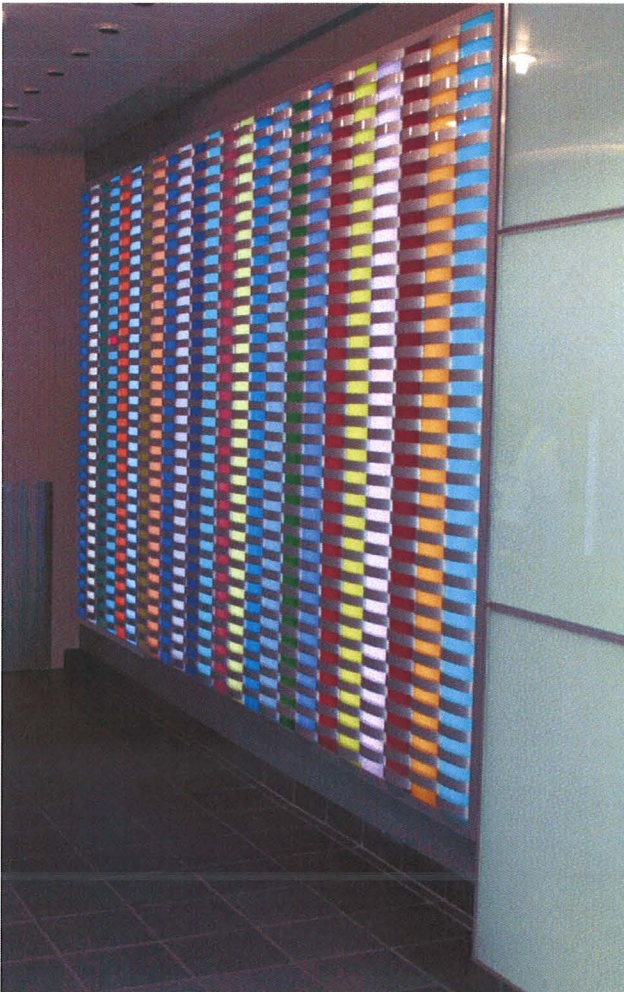
Installed

Time Interwoven

Christie Beniston

Commuter Terminal Elevator Lobby

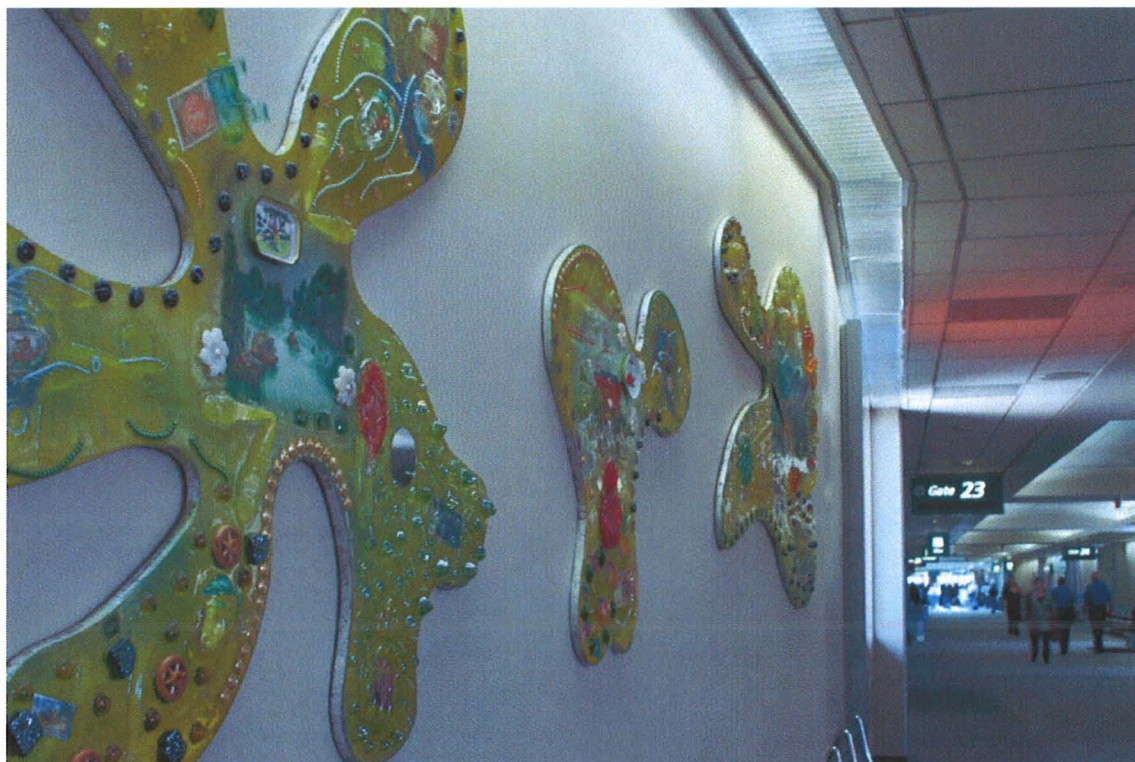
August 2009





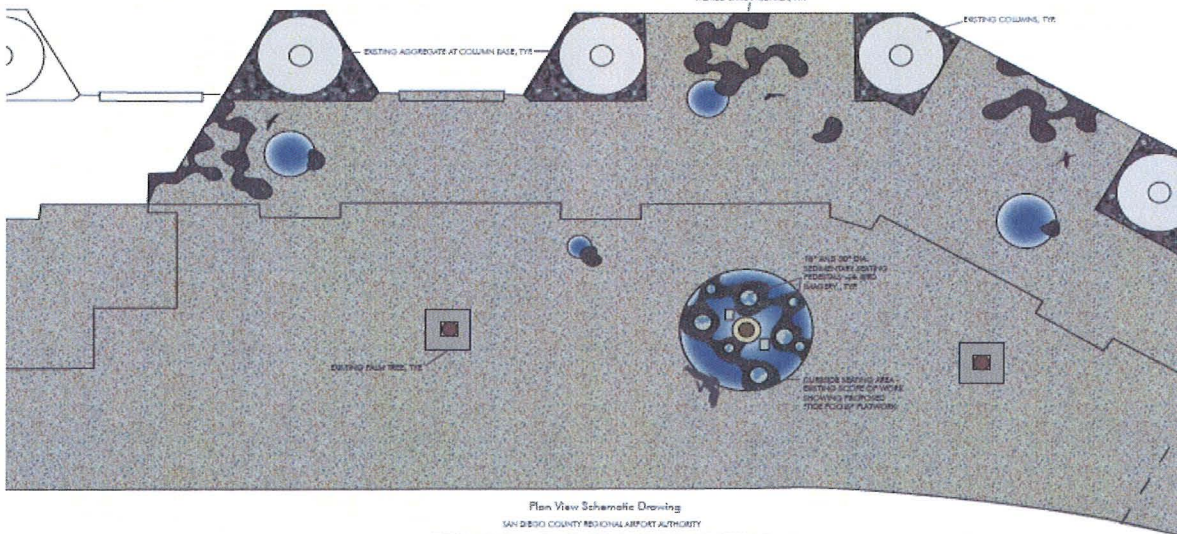
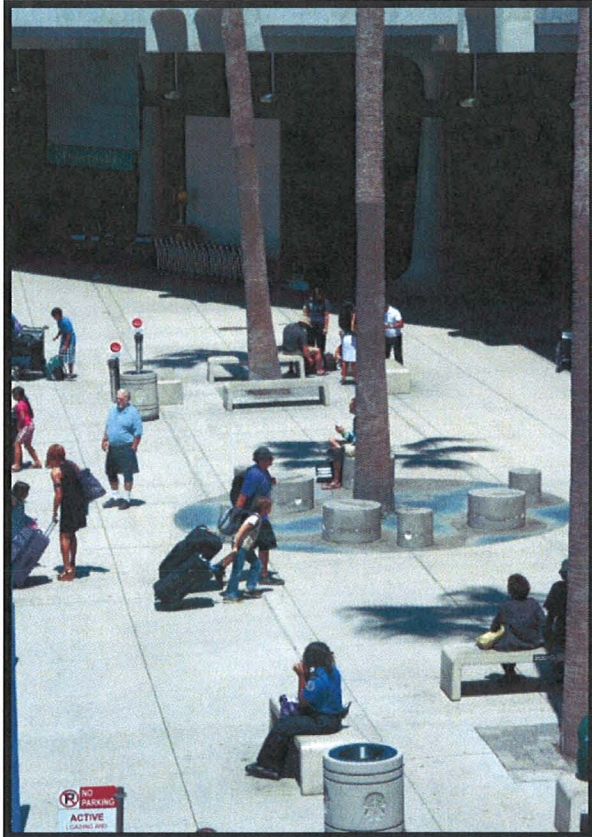
Installed

Afflicted Mementos
La Curva Estudios
Terminal 2 East Ticketing & Concourse
February 2010



Installed

Pacific Flyway
 Anne Mudge
 Terminal 1 Curbside
 May 2010

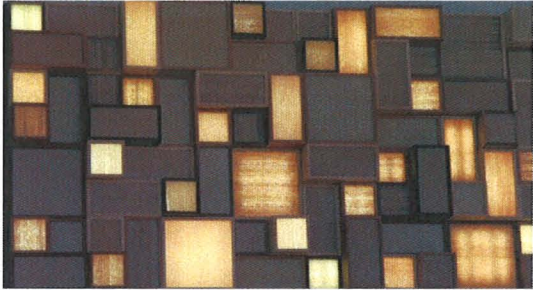


Plan View Schematic Drawing
 SAN DIEGO COUNTY REGIONAL AIRPORT AUTHORITY
**TERMINAL ONE CURBSIDE SEATING
 WITH PROPOSED HARDSCAPE ENHANCEMENTS**

Shown: Area east of pedestrian bridge with treatment of 3 entrance areas. Area west of pedestrian bridge, with 4 entrance areas, would be treated in similar manner.

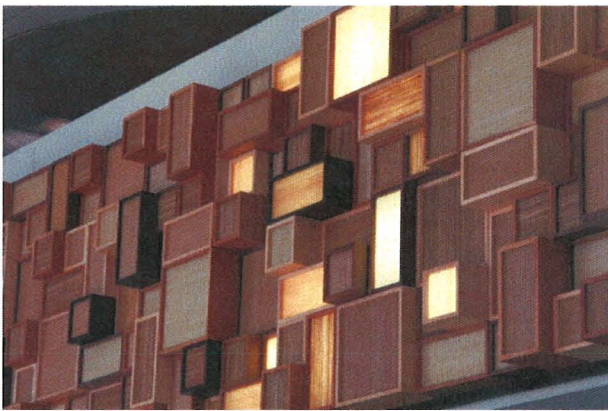
ANNE MUDGE | THE LAUT STRAIN | © 2010





Installed

Signalscape
Miki Iwasaki
Terminal 1 Baggage Claim
November 2011



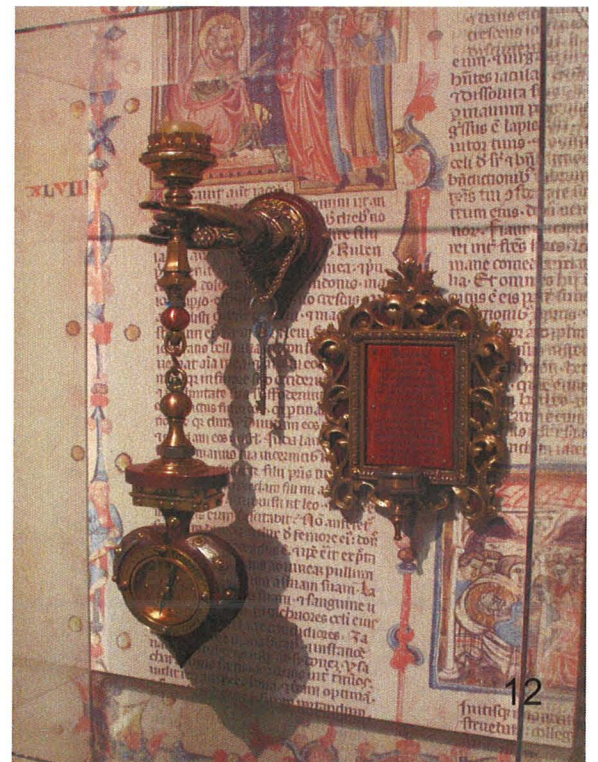
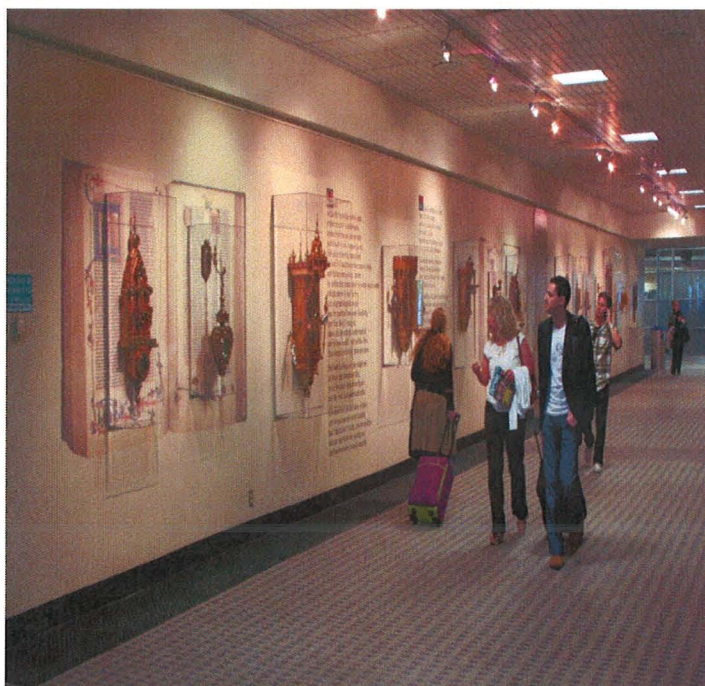
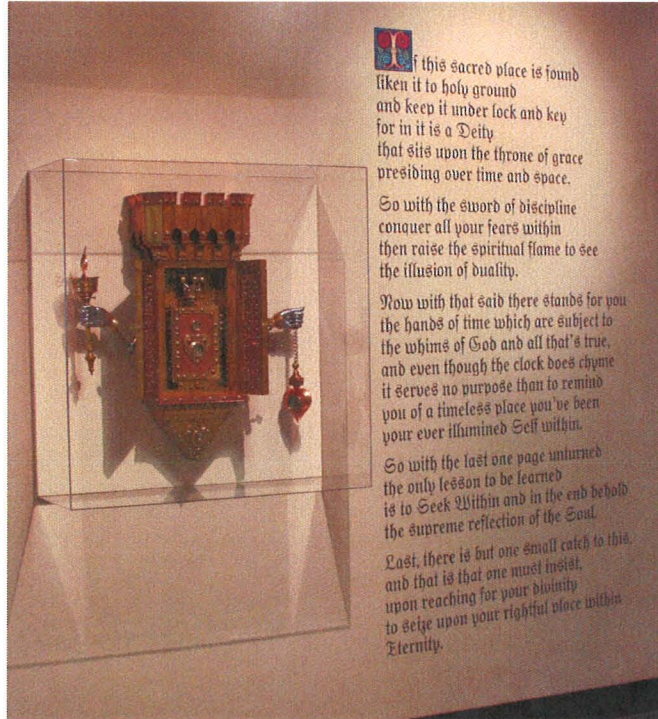
Temporary Installation

Within the Heart of Time and Space

Jeffrey Steorts

Terminal 2 Transition Corridor Post Security

March-October 2011



Temporary Installation

Within Europa's Sea

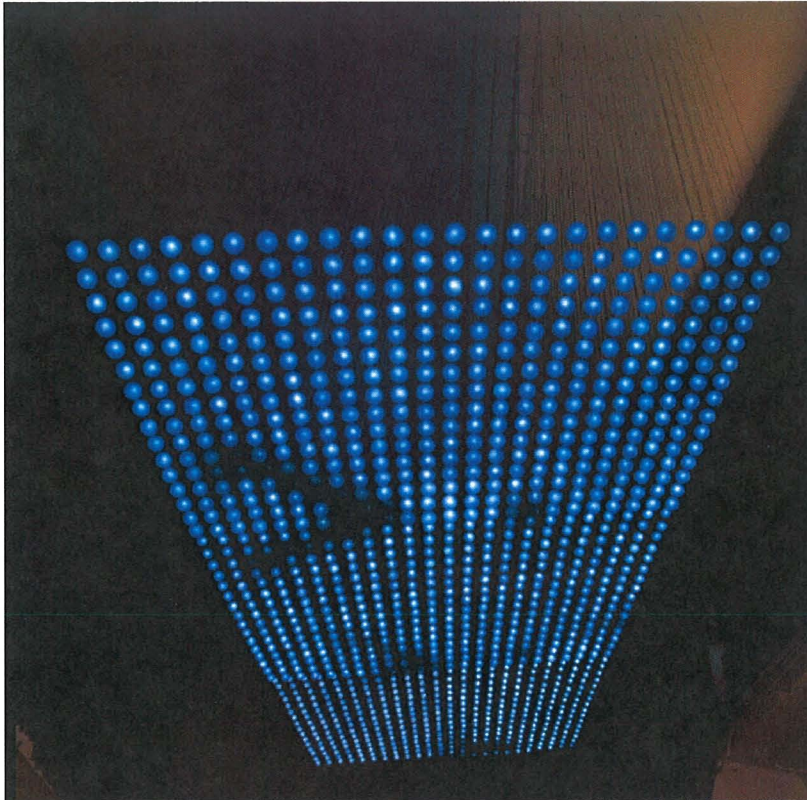
William Leslie

Terminal 2 Transition Corridor Post Security

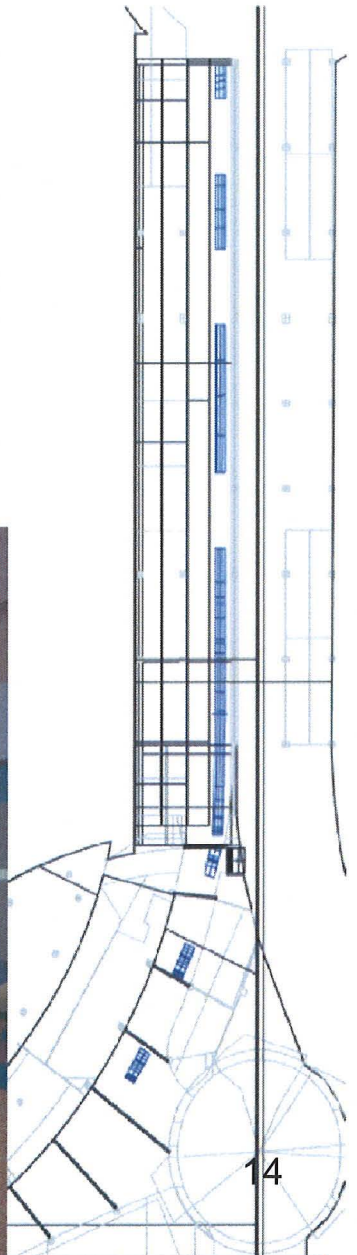
October 2011 – March 2012



Fabrication



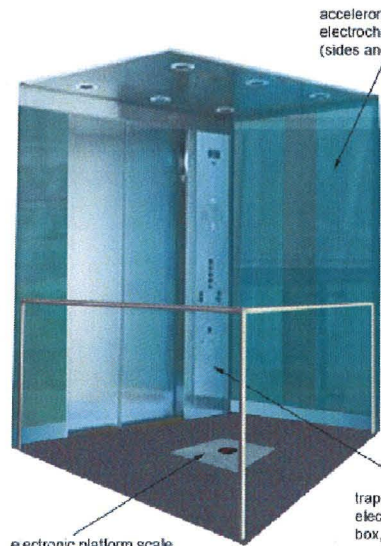
The Journey
Jim Campbell
North Concourse



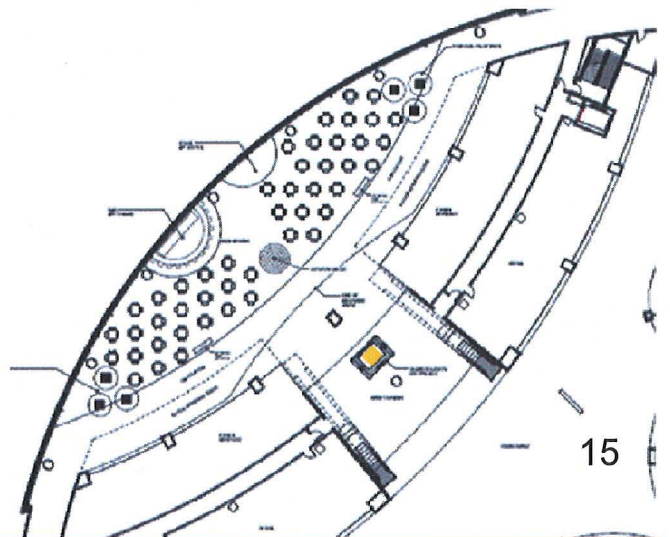
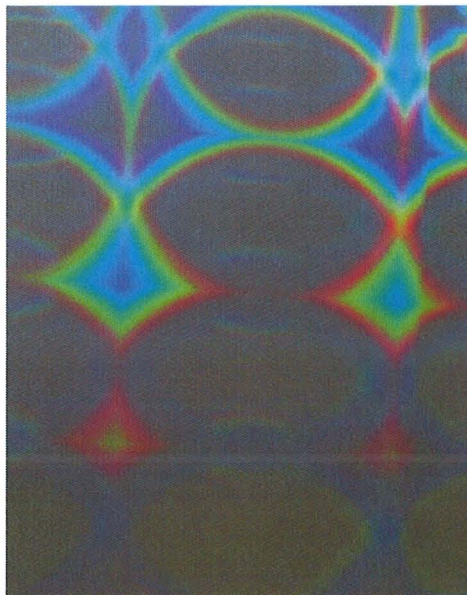
Design Development

Relativator
Living Lenses
Concession Core Elevator

Artwork Elements
PERSPECTIVE VIEW
Exact elevator model TBA

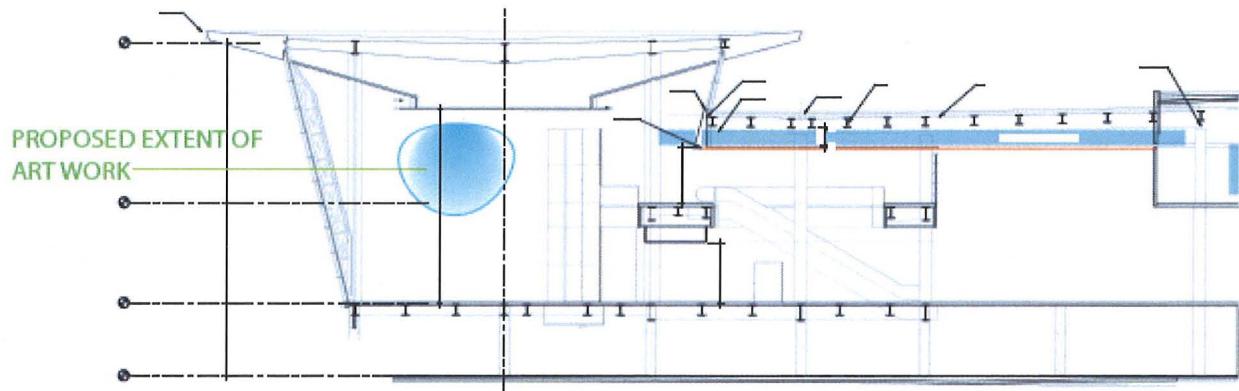
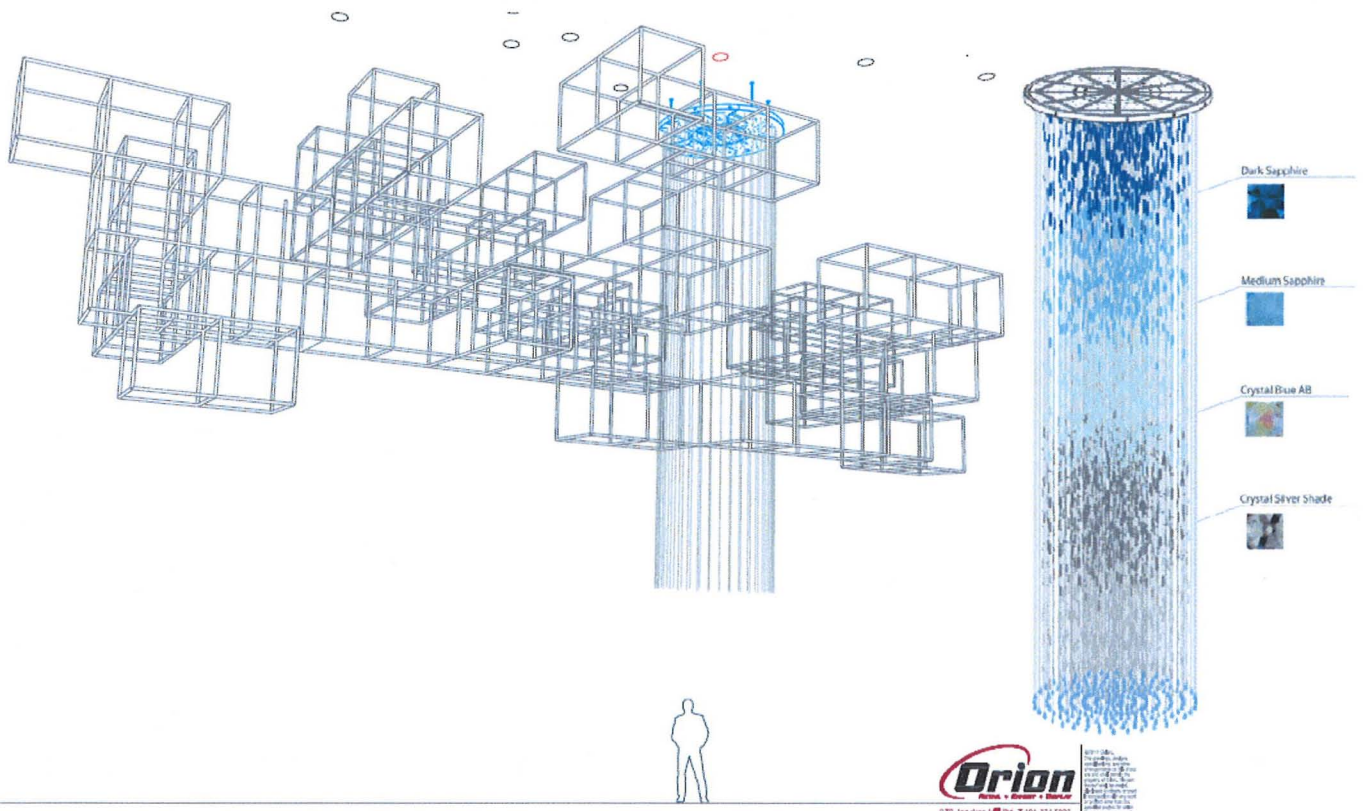


electronic platform scale renders riders' sensation of gravity/acceleration/weight changes in numeric values.

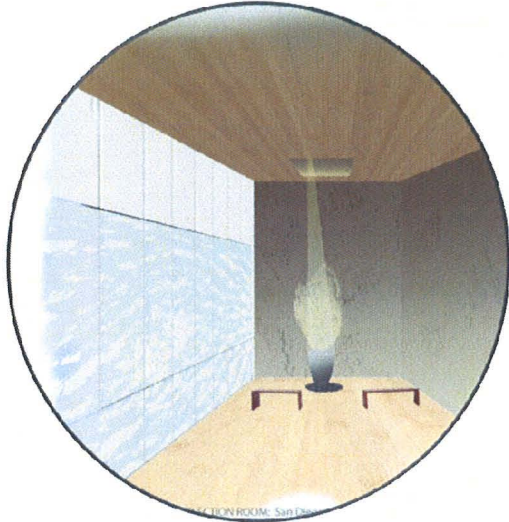


Construction Documents

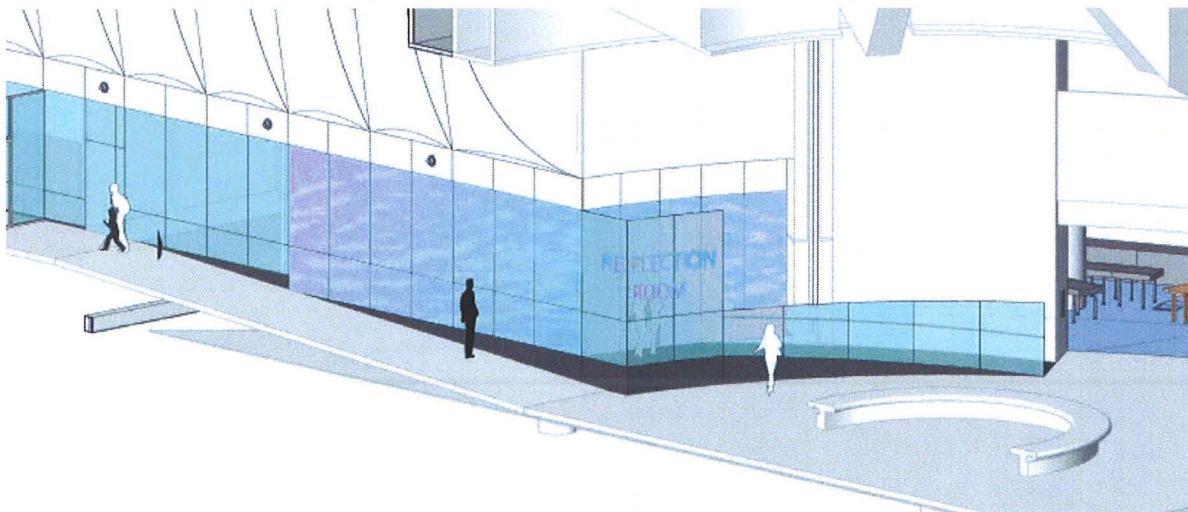
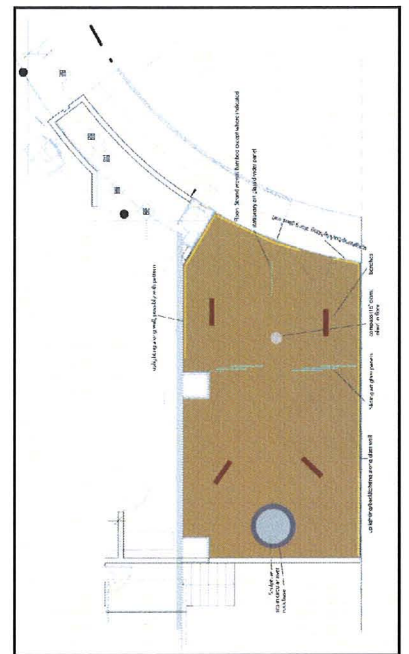
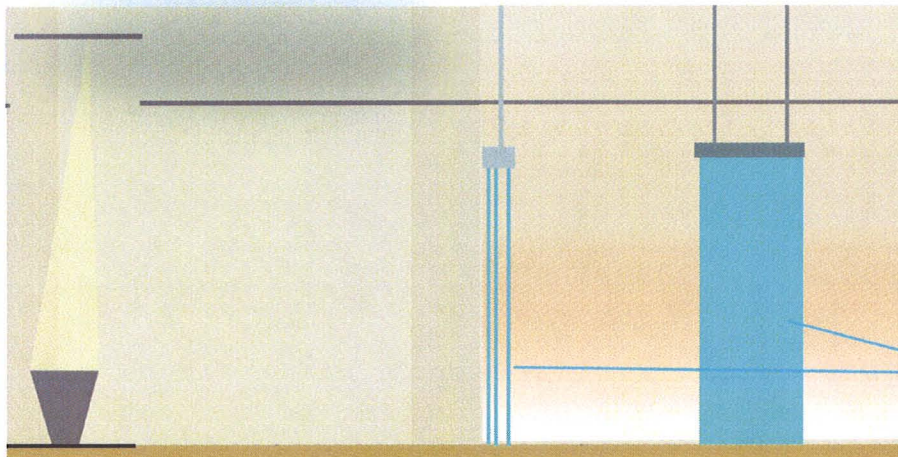
Cloud Taxonomy
Stuart Keeler
Concession Core



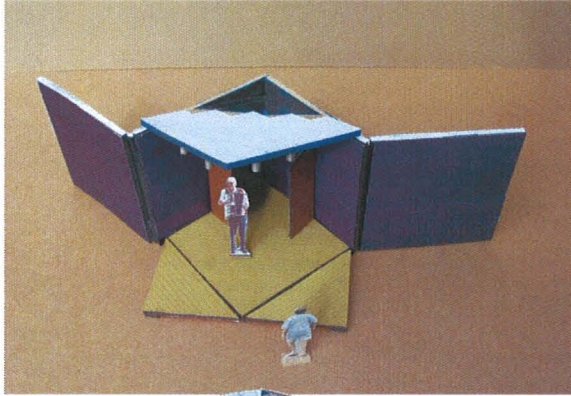
Design Development



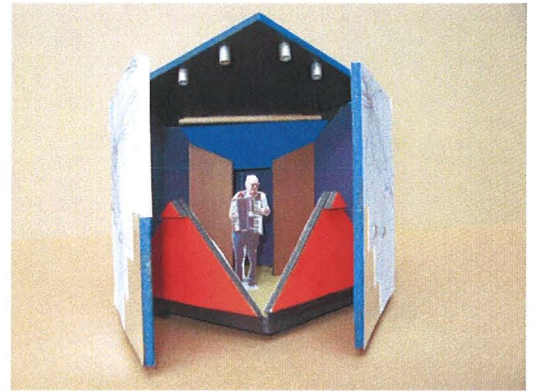
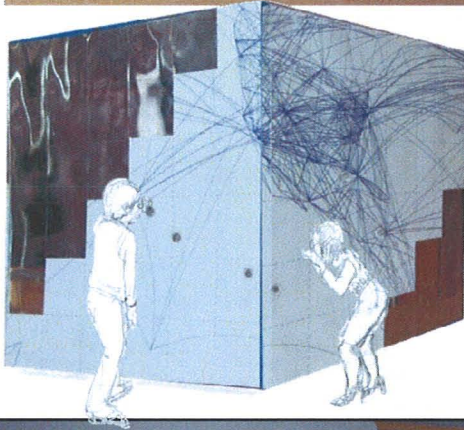
Reflection Room
Norie Sato
Marketplace Rotunda
Earth – Water – Fire



Design Development



The Cube
Harries & Heder Collaborative
Concession Core



Construction Documents



art panels
Underneath roadway

art glass

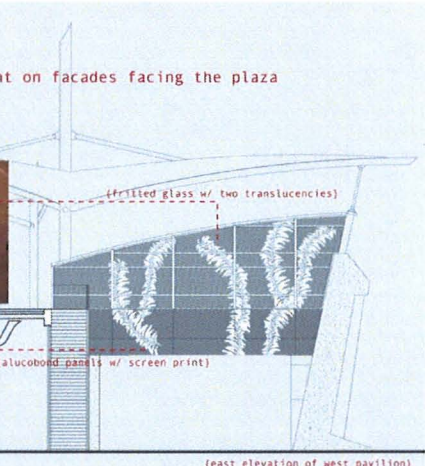
SUBLIMARE

Merge Conceptual Design

Elevated Departures Roadway

Underwater sea forms using subtle and reflective materials

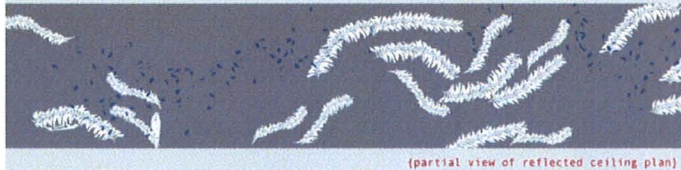
SUBLIMARE
public art component on facades facing the plaza



(giant kelp beds in close proximity to the airport) (material and lighting mock-up)



SUBLIMARE
installation at san diego international airport
ceiling treatment under elevated road way



reflected ceiling plan

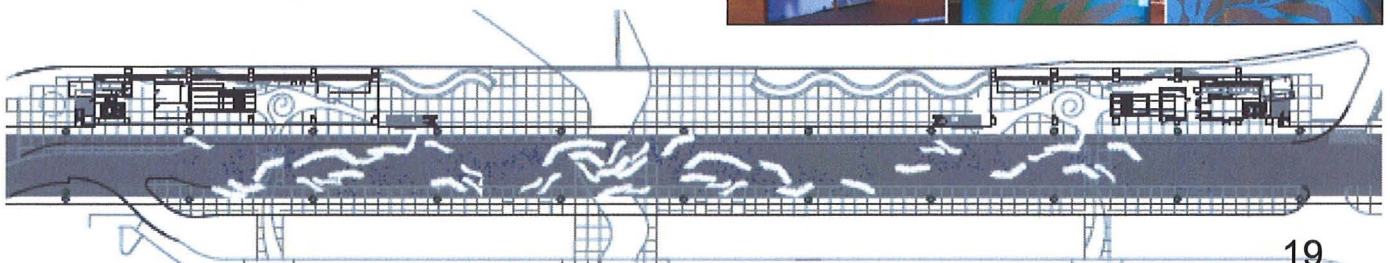
5/14/2010: 11:00am
panel: 02.02 pavilion
width: 4000mm, height: 4.0m
material: alucobond panels w/ screen print

7/13/2010: 2:00pm
panel: 02.02 pavilion
width: 4000mm, height: 4.0m
material: alucobond panels w/ screen print

(typical wave patterns)

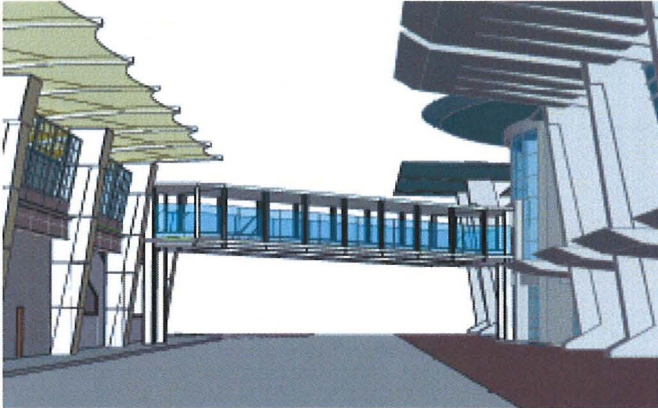
projected light pattern based on real time wave data

(facade mock-up with projection) (from outside) (from inside)

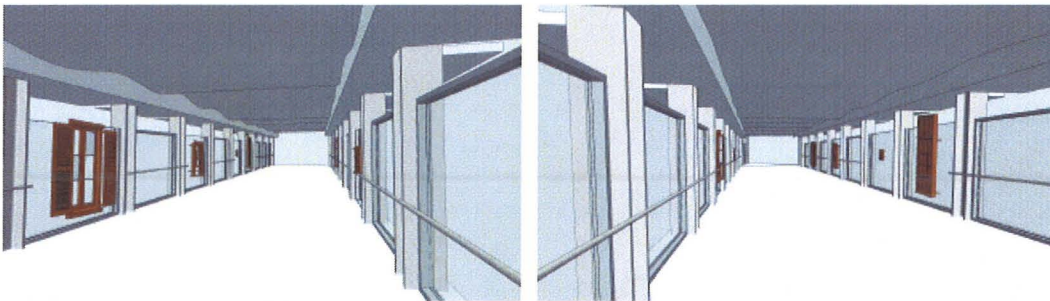
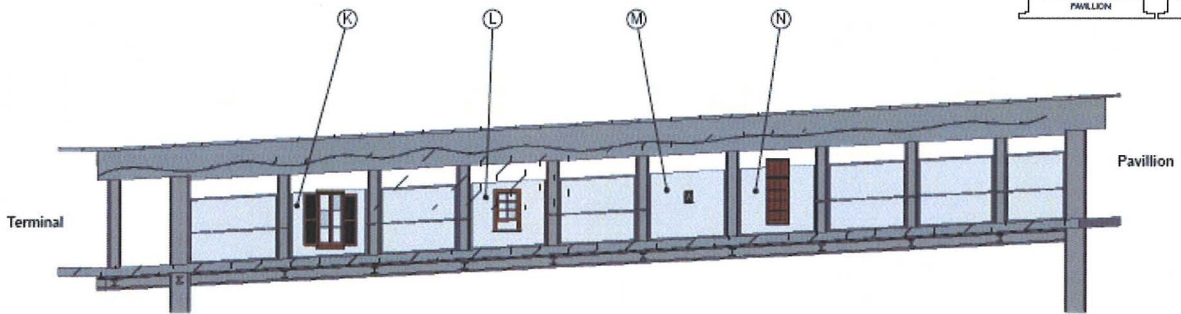
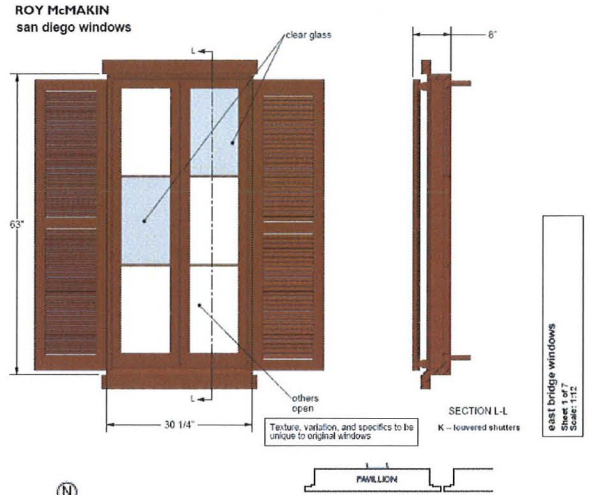
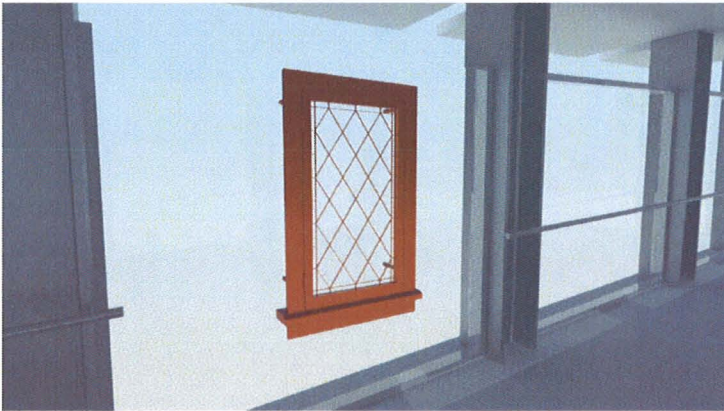


layout of kelp pattern between west pavilion and east pavilion

Design Development



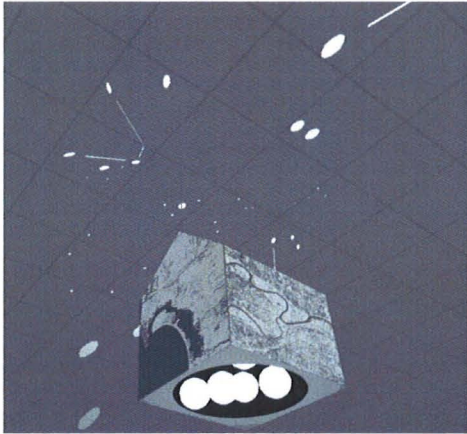
Portraits of San Diego
Notions of Home
Roy McMakin
Pedestrian Bridges



Terminal View

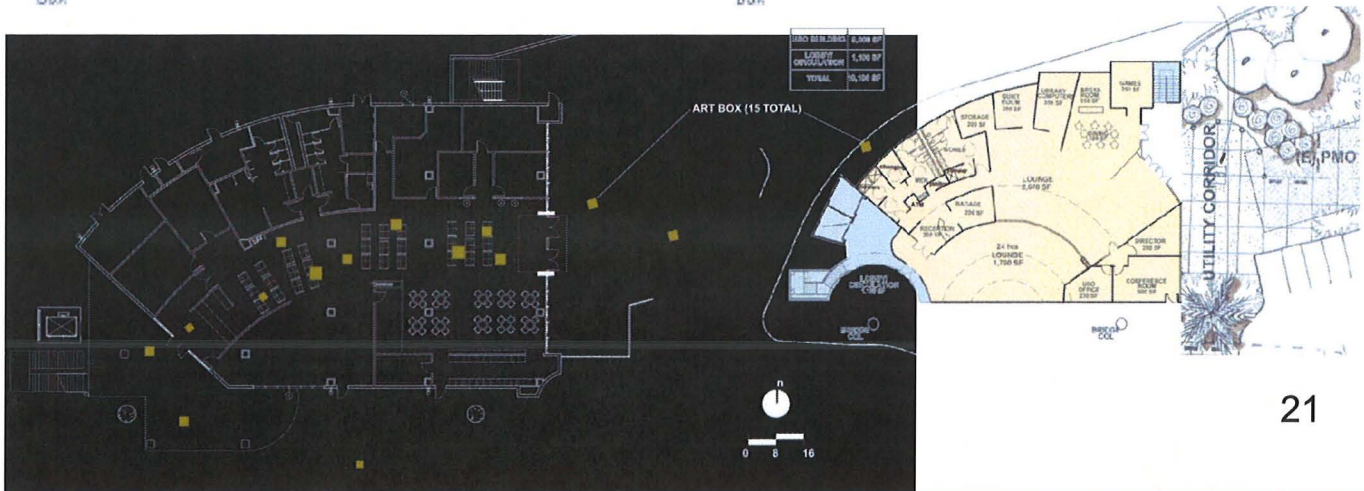
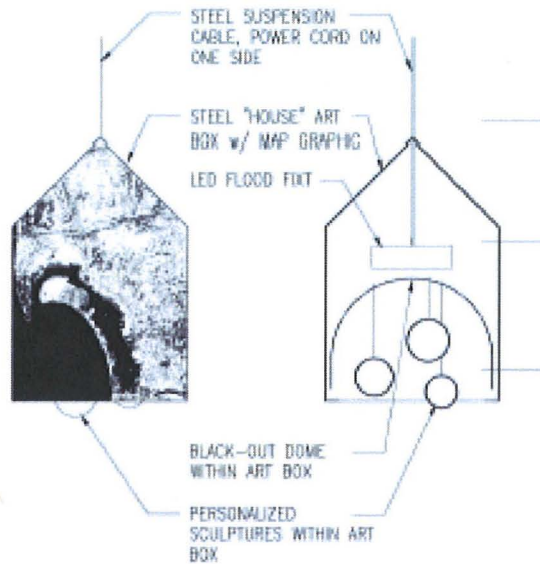
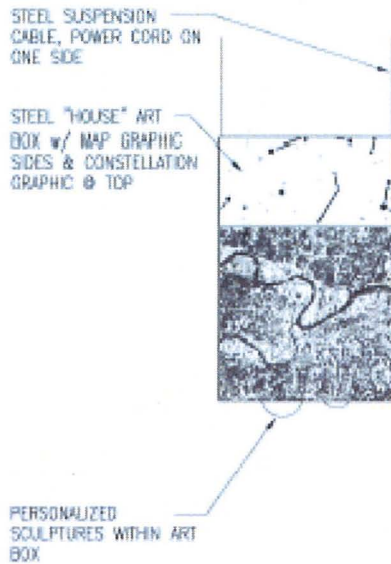
Pavillion View

Fabrication



United Service Organization
CoLAB

Individuality - Sculpture
Community - houses
Connectivity - constellations





What are the milestones?

Artwork Site Selection

Artist collaborates with Authority staff and design team to determine appropriate Site within the pre-determined opportunity

Research

Artist conducts independent research and meets as often as needed with Authority staff and design team to understand building program

Conceptual Design

General intent of artwork, proposed form, indication of location

Schematic Design

Approved Concept Design with form, indication of scale, proposed materials, preliminary fabrication and installation methods, costs and schedule

Design Development

Details of the artwork, scale model, proposed materials, plans with structural considerations, detailed budget

Construction Documents

Professional drawings describing fabrication and installation methods

Fabrication

Includes off-site construction, forming, assembly, machining or manufacturing of Artwork

Delivery and Installation

Deliver and install Artwork at specified site

Q

How is Public Art funded?

A

Airport Construction Projects Capital Budgets

(Terminal Development Program/Capital Improvement Plan)

minus* Ineligible Costs

Remaining Total X 2% = Public Art Fund

*airside construction, land acquisition, purchase of equipment and modular facilities, feasibility studies are ineligible costs.

Q

How are the artists selected?

A

Step 1: Artists Selection Panel Members – appointed by
Airport Art Advisory Committee (AAAC)

Step 2: Call For Artists (RFQ) issued
developed by Art Program staff in consultation with
General Counsel and Procurement

Step 3: Submission Review
responsive qualifications reviewed and short-listed by
Artist Selection Panel

Step 4: Short-listed candidates interviewed & final artist
recommended by
Artist Selection Panel

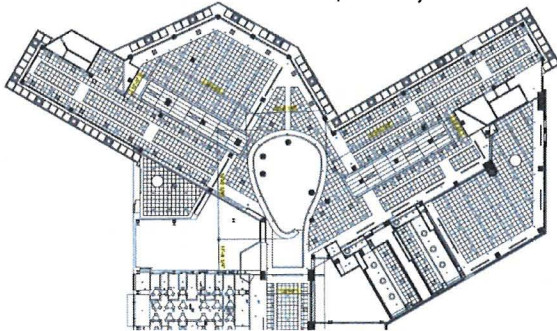
Step 5: Recommended Artist/Artwork Approved by
AAAC
President/CEO
Authority Board

Staff Requests the Board to:

Authorize Contracts with Recommended Artists to Design Integrated Artwork for San Diego International Airport as Presented:

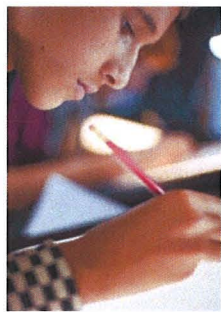
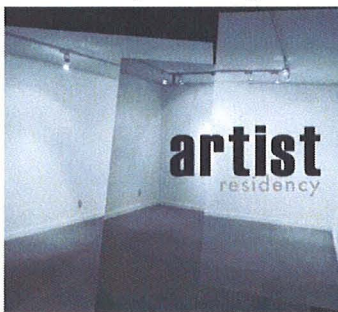
1. Terminal 2 East Ceiling Node (CIP)

Paul Hobson - \$300,000



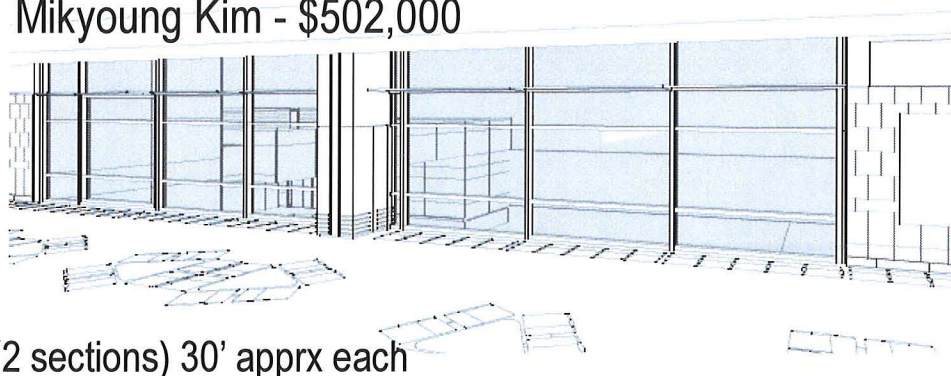
2. Artist Residency (GB)

Sheryl Oring - \$118,000



3. Passenger Waiting Room Window Bays (GB)

Mikyong Kim - \$502,000



(2 sections) 30' apprx each

What's Next?

1. A New Chill Zone: Multi-sensory Environment
2. Restroom Entry Walls
3. Terminal 1 Concessions Core Project
4. Public Art Projects on the North Side

Questions?