

TDP Committee Meeting
Green Build Community Communication Update
July 10, 2012



Questions?

Cell Phone Lot Expanded

Sunset Cove Glass Installation

Media Event

**Look Ahead:
T2 Parking Reopening
in August**

Green Build Construction Reaches Halfway Point

Media Event

Awards

Terminal 2 Transportation Plaza Relocated

Concession Barricade Plan

Green Build Construction Reaches Halfway Point

SAN DIEGO INTERNATIONAL AIRPORT
AIRPORT CONSTRUCTION ALERT
The Green Build Terminal Development Program

Airport Construction NEWS

Construction is 50 percent complete toward a summer 2013 opening at San Diego International Airport. The construction in front of Terminal 2 will be completed in the next few months, and two new gates will be opened.

Construction crews are hard at work inside the new terminal space to give visitors access. With the terminal's exterior finish, two new gates will be opened.

Key upcoming project milestones include:

- Summer 2012: Peak construction
- Fall 2012: Terminal parking
- January 2013: USD construction
- Summer 2013: Grand opening

Green Build construction reaches halfway point

Construction is 50 percent complete toward a summer 2013 opening at San Diego International Airport. The construction in front of Terminal 2 will be completed in the next few months, and two new gates will be opened.

Construction crews are hard at work inside the new terminal space to give visitors access. With the terminal's exterior finish, two new gates will be opened.

Key upcoming project milestones include:

- Summer 2012: Peak construction
- Fall 2012: Terminal parking
- January 2013: USD construction
- Summer 2013: Grand opening

SAN.ORG



NORTH COUNTY TIMES

Media Event

UFT San Diego

FOX 5 SAN DIEGO

NEWS.com

SAN DIEGO BUSINESS JOURNAL

SAN DIEGO INTERNATIONAL AIRPORT

AIRPORT CONSTRUCTION ALERT

The Green Build Terminal Development Program

Airport Construction Construction

NEWS

SAN.ORG
San Diego International Airport

PUBLIC RELATIONS
P.O. BOX 82776, SAN DIEGO, CA 92138
619.400.2880

Contact: Katie Jones
619.400.2884 / kjones@san.org

Green Build construction reaches halfway point

Largest construction project in airport history is on time and on budget

SAN DIEGO – April 25, 2012 – Construction is 50 percent complete on The Green Build, the largest project in the history of San Diego International Airport. The project is on schedule and within budget, moving toward a summer 2013 opening date.

Construction crews are hard at work on the dual-level roadway, which will relieve curb-front congestion in front of Terminal 2 when complete. Concrete decks have been poured, and in the coming months, two new pedestrian bridges will be installed, reaching from the roadway to the terminal.

Work is ongoing inside the new terminal expansion as well, as crews build out the interior space into gate waiting areas, bathrooms, concessions areas and storage rooms. The building's exterior finishes are also currently being installed.

Remaining milestones:

- Summer 2012: Peak construction; 1,000 workers will be on the site
- Fall 2012: Terminal 2 parking reopens (700 spaces)
- January 2013: USO construction complete
- Summer 2013: Grand opening

When complete, The Green Build will bring a number of long-awaited upgrades to passengers traveling in and out of San Diego International Airport, including 10 new gates, a dual-level roadway in front of Terminal 2 to separate arriving and departing passengers, more security lanes, expanded waiting areas and more shopping and dining options. The Green Build, a \$1 billion project, will create 1,000 jobs at peak construction.

Construction is 50 percent complete on The Green Build, the largest project in the history of San Diego International Airport. The project is on schedule and within budget, moving toward a summer 2013 opening date.

Construction crews are hard at work on the dual-level roadway, which will relieve curb-front congestion in front of Terminal 2 when complete. Concrete decks have been poured, and in the coming months, two new pedestrian bridges will be installed, reaching from the roadway to the terminal.

Work is ongoing inside the new terminal expansion as well, as crews build out the interior space into gate waiting areas, bathrooms, concessions areas and storage rooms. The building's exterior finishes are also currently being installed.

Key upcoming project milestones include:

- Summer 2012: Peak construction
- Fall 2012: Terminal 2 parking reopens (700 spaces)
- January 2013: USO construction complete
- Summer 2013: Grand opening



NORTH COUNTY TIMES

Media Event



Terminal 2 Transportation Plaza Relocated

SAN DIEGO INTERNATIONAL AIRPORT

AIRPORT CONSTRUCTION ALERT

The Green Build Terminal Development Program

Airport Construction Update: Terminal 2 Transportation Plaza to be Relocated

The Terminal 2 transportation plaza will be moved to its new permanent position tonight, May 29, beginning at 11:30 p.m. Taxi cabs and shuttles will be available curbside at Terminal 2 while the transportation plaza is relocated east of the existing location. The new plaza will open at 5:00 a.m. Wednesday morning.

The transportation plaza's shift is part of the Airport Authority's [Green Build](#) Terminal 2 expansion program, and will allow for completion of the dual-level roadway in front of Terminal 2. Travelers are reminded to plan ahead and allow extra time as it may take longer than usual to get to the terminal, check in and/or pick up passengers at the airport as a result of The Green Build construction.

Cell Phone Lot Expanded



Sunset Cove Glass Installation

NEWS

SAN.ORG
San Diego International Airport
P.O. BOX 82776, SAN DIEGO, CA 92138
619.400.2800

Contact: Katie Jones
619.400.2884 / kjones@san.org

Airport to host media event to view The Green Build's spectacular glass architectural feature

What: Featuring floor-to-ceiling windows, Sunset Cove in the Terminal 2 expansion at San Diego International Airport is an architectural highlight. Installation of the glass panes is an engineering feat; construction crews will place one of the first windows and provide details on how this massive glass feature came together. Sunset Cove will be home to a wide variety of new dining options when open in summer 2013.

Visuals:
- View of the dramatic "wall of windows," part of the Sunset Cove concessions area (see image below)
- Action shots of construction crew installing one of the last remaining panes of glass



When: Tuesday, June 19, 2012
10:30 a.m.

Where: San Diego International Airport, NTC 2 Parking Lot*
Spruce Road, San Diego, CA 92101

Who: Bryan Enerson, Vice President of Development, San Diego County Regional Airport Authority
Dan Guskin, Project Director, Turner/PC/Farmon

*Directions to NTC 2 parking lot: from Harbor Drive westbound, follow the green parking signs and turn right on Midway Road. Turn right at the stop sign to Spruce Road and proceed to the end of the road; turn left into the parking lot. Parking will be validated.

More information is available in our online media kit: <http://bit.ly/18ba2>

808
Mastering the Art of Airports



Media Event



Construction
Point

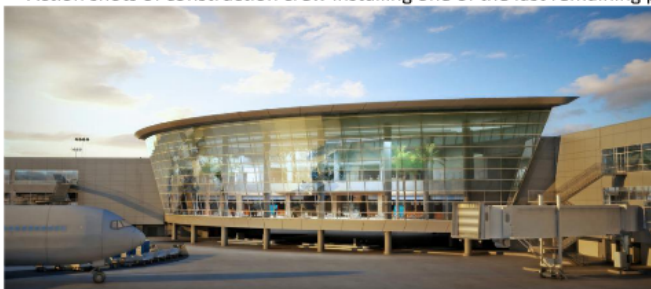
PUBLIC RELATIONS
P.O. BOX 82776, SAN DIEGO, CA 92138
619.400.2880

Contact: Katie Jones
619.400.2884 / kjones@san.org

Airport to host media event to view The Green Build's spectacular glass architectural feature

What: Featuring floor-to-ceiling windows, Sunset Cove in the Terminal 2 expansion at San Diego International Airport is an architectural highlight. Installation of the glass panes is an engineering feat; construction crews will place one of the final windows and provide details on how this expansive glass feature came together. Sunset Cove will be home to a wide variety of new dining options when open in summer 2013.

Visuals: -- View of the dramatic "wall of windows," part of the Sunset Cove concessions area (see image below)
-- Action shots of construction crew installing one of the last remaining panes of glass



When: Tuesday, June 19, 2012
10:30 a.m.

Where: San Diego International Airport, NTC 2 Parking Lot*
Spruance Road, San Diego, CA 92101

Who: Bryan Enarson, Vice President of Development, San Diego County Regional Airport Authority
Dan McGuckin, Project Director, Turner/PCL/Flatiron

*Directions to NTC 2 parking lot: from Harbor Drive westbound, follow the green parking signs and turn right on McCain Road. Turn right at the stop sign to Spruance Road and proceed to the end of the road; turn left into the parking lot. Parking will be validated.

More information is available in our online media kit: <http://bit.ly/L8lpzj>.

###

Mastering the Art of Airports



M





Media Event



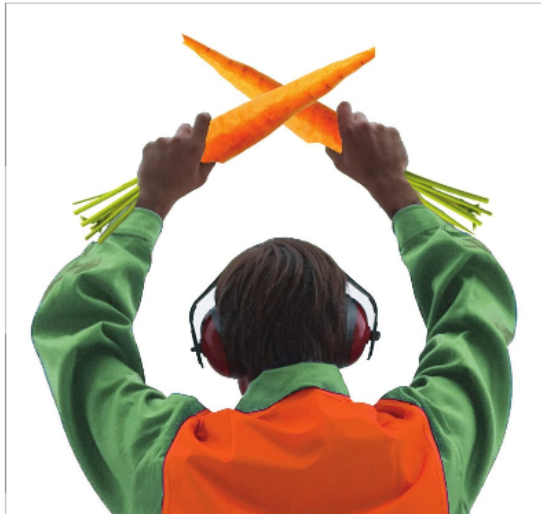


Look Ahead: T2 Parking Reopening in August



Concession Barricade Plan





FARM-TO-TABLE TO-GATE

SUPPORT TENDER GREENS

SPROUTING 2013



Awards





Questions?