

QUIETER HOME PROGRAM



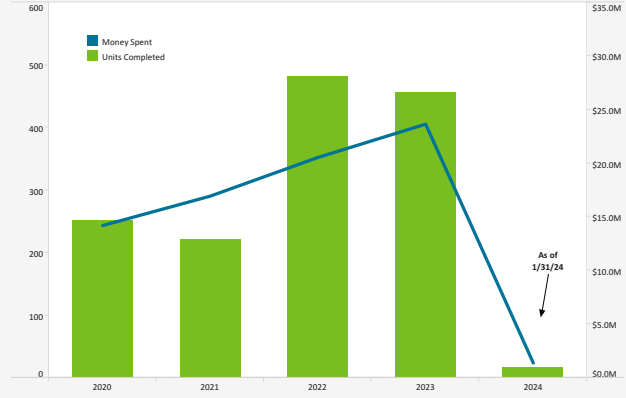
Quieter Home Program As Of: 1/31/2024

Status of Homes	
Homes Completed this Month	18
Added this Month	27
Estimated Homes to Complete in CY 2024	300
Homes on Wait List	408
Total Homes Completed	5,619
Amount Spent on Multi-Family Units (USD) this Month	275,847

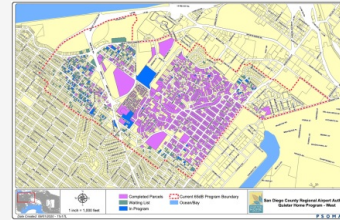
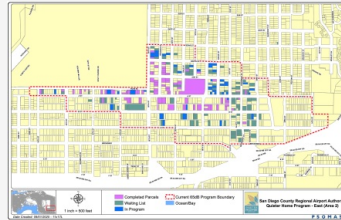
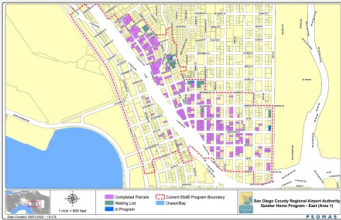
Project	Estimated Construction Start	# Homes
12.3	In Process	37
12.4 (QNRP)	In Process	3
12.5 (QNRP)	Winter 2024	3
12.6	In Process	62
12.7	In Process	34
12.8	Spring 2024	12
12.9	Spring 2024	36
12.10	Winter 2024	34
12.11	Spring 2024	25
12.12	Spring 2024	29
13.1	Summer 2024	30
13.2	Summer 2024	27
13.3	Summer 2024	25
13.4	Fall 2024	24
13.5	Winter 2024	36
13.6	Winter 2025	33
13.7	Winter 2025	27
13.8	Spring 2025	37
13.9	Spring 2025	29
13.10	Summer 2025	25
13.11	Summer 2025	25
13.12	Fall 2025	25

QNRP: Quieter Non-Residential Program

From 2001 – 2009, \$89.8 Million Was Spent To Complete 1,334 Homes



Program Boundary Maps



Data Disclaimer: We do our best to ensure that the data we release is complete, accurate and useful. However, because we do not create the data, and because the processing required to make the data useful is complex, we are not liable for omissions, inaccuracies or changes in the data.

CURFEW VIOLATIONS



Noise Curfew Violations: Any aircraft that departs after 11:30 p.m. and before 6:30 a.m. is subject to a penalty.

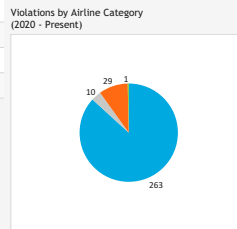
Curfew Violations (December 2023 - January 2024)

Date, Time	Airline	Aircraft Type	Status
12/9/2023, 06:07 AM	Spirit Airlines	A20N	FINED - \$6,000
12/11/2023, 12:27 AM	United Airlines	B752	Not Fined
12/18/2023, 11:41 PM	jetBlue Airways	A321	Not Fined
12/21/2023, 11:33 PM	SkyWest Airlines	E75L	Not Fined
12/22/2023, 11:54 PM	SkyWest Airlines	E75L	FINED - \$10,000
12/23/2023, 12:02 AM	Alaska Airlines	B39M	Not Fined
12/24/2023, 11:30 PM	Alaska Airlines	B739	Not Fined
12/27/2023, 12:48 AM	Alaska Airlines	B739	FINED - \$10,000
1/1/2024, 11:34 PM	jetBlue Airways	A320	Pending Review
1/8/2024, 12:22 AM	Alaska Airlines	B739	Pending Review
1/20/2024, 12:44 AM	jetBlue Airways	A320	Pending Review
1/22/2024, 11:50 PM	United Airlines	B752	Pending Review

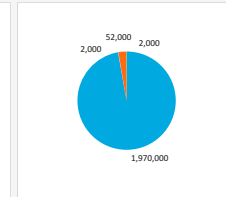
Annual Violations and Penalties Assessed (Year-to-Date)

Year	Total Violations	Fines Assessed
2020	18	\$16,000
2021	52	\$204,000
2022	89	\$804,000
2023	141	\$1,004,000
2024	4	\$0

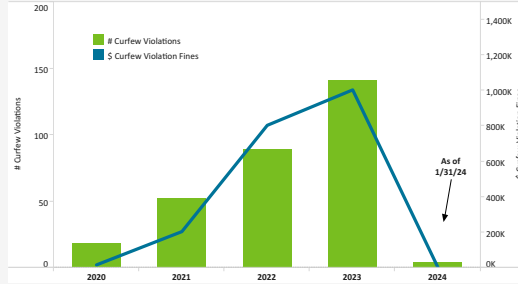
Violations by Airline Category (2020 - Present)



Fines Assessed by Airline Category (2020 - Present)



Curfew Violations and Penalties Assessed (by Year)



Airline Category	# Curfew Violations	\$ Curfew Violation Fines
A - Air	263	\$1,970,000
C - Cargo	10	\$2,000
G - G/A	29	\$52,000
M - Mil	1	\$0

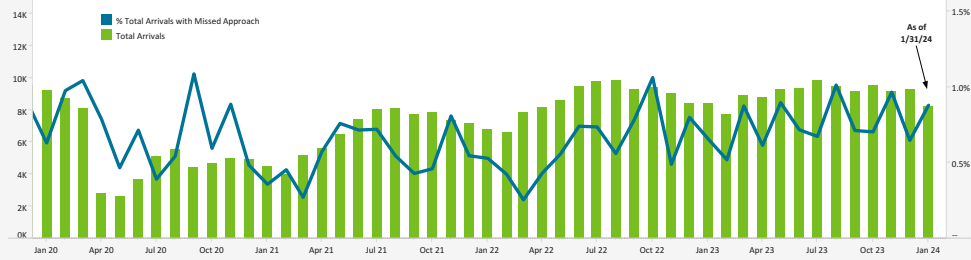
Data Disclaimer: We do our best to ensure that the data we release is complete, accurate and useful. However, because we do not create the data, and because the processing required to make the data useful is complex, we are not liable for omissions, inaccuracies or changes in the data.

MISSED APPROACH STATISTICS



Missed Approaches: A procedure to maintain safety, initiated by the pilot or Air Traffic Control (ATC) for a pilot to abandon the approach to landing.

Total Arrivals Compared to (%) of Missed Approaches

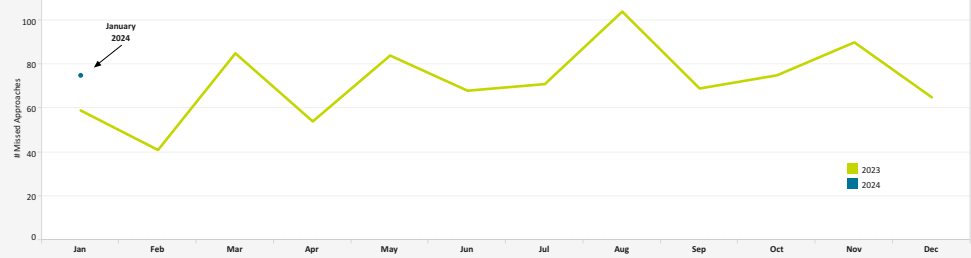


	2020	2021	2022	2023	2024
% Total Arrivals with Missed Approach	0.7%	0.6%	0.6%	0.8%	0.9%
Total Arrivals	64,576	79,016	102,974	108,561	8,180
Total Missed Approaches	508	470	668	865	75

Missed Approach Location Statistics

	Nov		Dec		Jan			Nov		Dec		Jan	
	Day	Night	Day	Night	Day	Night		Day	Night	Day	Night	Day	Night
Between Noise Dot #1 - Noise Dot #2	1	3	0	0	3	0	Between 265°-295° Heading (Standard)	52	27	47			
Between Noise Dot #2 - JETI	15	7	18	0	22	1	East of Airport	19	26	15			
Between JETI - Noise Dot #3	24	2	8	1	20	1	Left of 265°	15	9	12			
Between Noise Dot #3 - Noise Dot #4	13	0	7	1	11	0	Right of 295°	3	3	1			
Between Noise Dot #4 - Noise Dot #5	3	0	0	0	1	0							

Total Missed Approaches



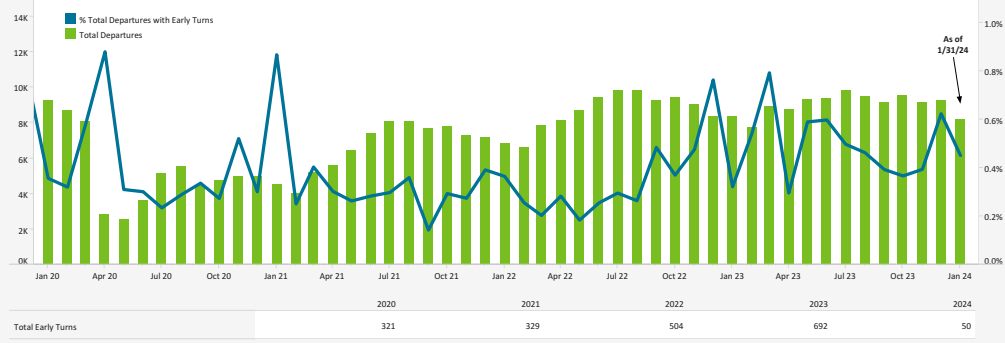
Data Disclaimer: We do our best to ensure that the data we release is complete, accurate and useful. However, because we do not create the data, and because the processing required to make the data useful is complex, we are not liable for omissions, inaccuracies or changes in the data.

EARLY TURN STATISTICS



The Airport Authority has defined early turns as those aircraft that turn right prior to FAA Noise Dot #1 at the 295-degree heading or turn left prior to the FAA Noise Dot #3 at the 265-degree heading.

Total Departures Compared to (%) of Early Turns

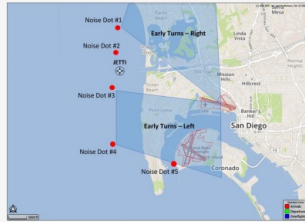


Departure Statistics

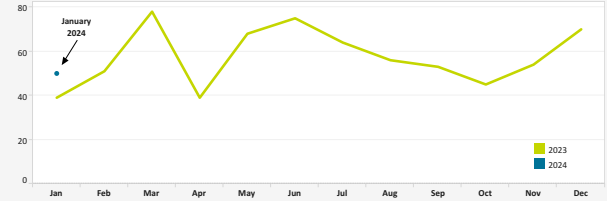
	Nov	Dec	Jan
Jets Turning Left	4,655	4,802	4,067
Between Z2000 and Noise Dots	425	576	458
Compliant with Nighttime departure Heading (290°)	394	413	288
Not Nighttime Compliant - Over La Jolla	39	23	21
Not Nighttime Compliant - Straight Out	3	5	2
Not Nighttime Compliant - East	24	16	0

Cause of Early Turns

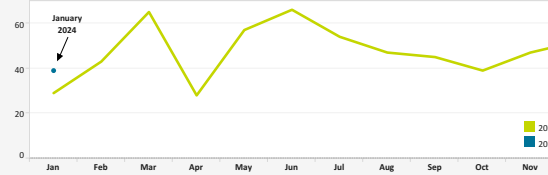
	Nov	Dec	Jan
Caused by ATC Vectors	51	59	41
Caused by Pilot Deviation	2	2	0
Caused by Weather	1	9	9



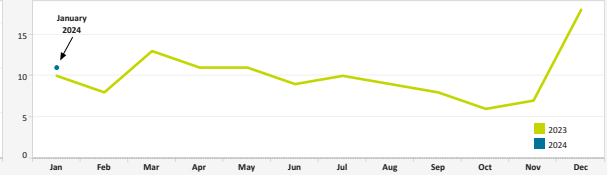
Total Early Turns



Over Point Loma



Over Mission Beach



Early Turns by Operator (January 2024)

Airline	Left Early Turns	Total Operator Departures	% Departures with Left Early Turns
Southwest Airlines	15	5,393	0.3%
SkyWest Airlines	1	1,876	0.1%
American Airlines	3	1,489	0.2%
Delta Air Lines	7	1,303	0.5%
United Airlines	4	1,267	0.3%
Alaska Airlines	1	1,091	0.1%
General Aviation	3	744	0.4%
Frontier Airlines	2	441	0.5%
Flexjet	1	117	0.9%
Sun Country Airlines	1	46	2.2%
Alpha Flying Inc - PlaneSense	1	6	16.7%

Early Turns by Operator (January 2024)

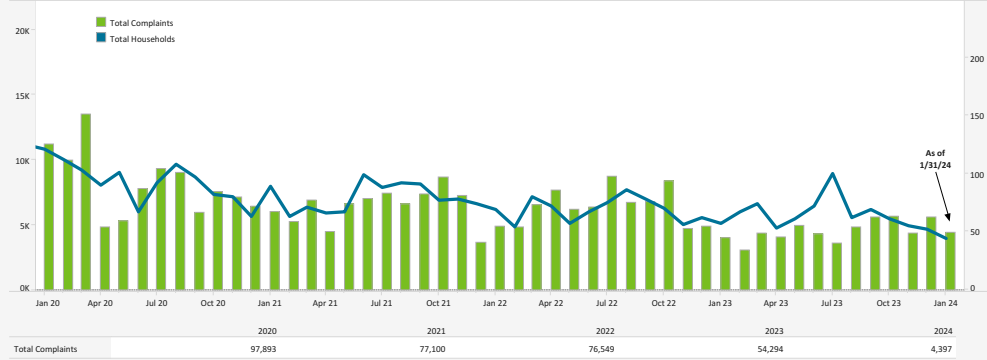
Airline	Right Early Turns	Total Operator Departures	% Departures with Right Early Turns
Southwest Airlines	1	5,393	0.0%
SkyWest Airlines	1	1,876	0.1%
Alaska Airlines	2	1,091	0.2%
Spirit Airlines	1	309	0.3%
Flexjet	3	117	2.6%
Chrysler Aviation Inc	3	34	8.8%

Data Disclaimer: We do our best to ensure that the data we release is complete, accurate and useful. However, because we do not create the data, and because the processing required to make the data useful is complex, we are not liable for omissions, inaccuracies or changes in the data.

NOISE COMPLAINT STATISTICS

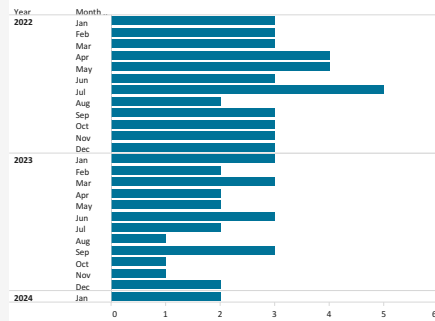


Total Complaints Compared to Total Households

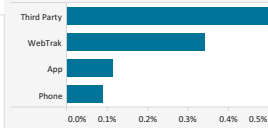


The Authority reports all complaints.

Number of Households with 500+ Complaints per Month



Complaints by Contact Method



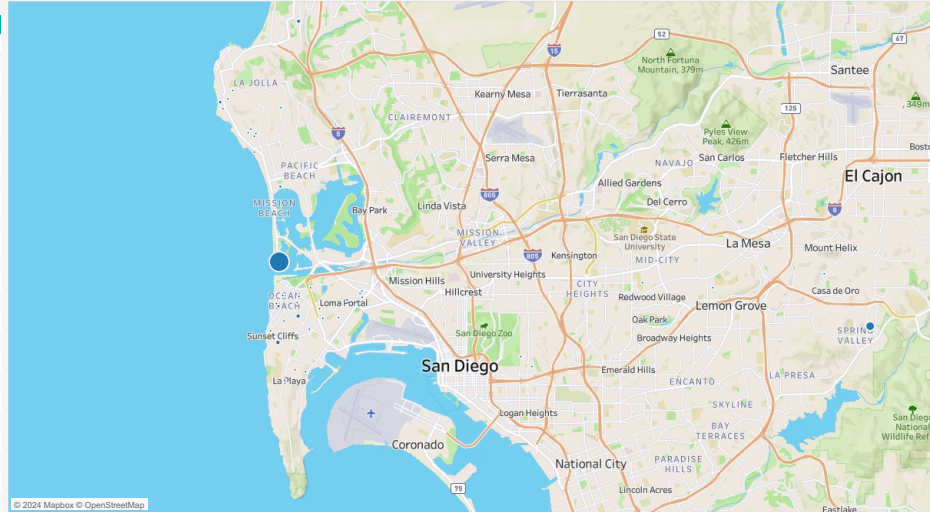
Disturbance Type

Disturbance Type	# Complaints	% Total
Too Loud	4,383	99.7%
Curfew Violation	10	0.2%
Suspected Off Course	3	0.1%
Overflight	1	0.0%

Number of Complaints by Neighborhood (January 2024)

Neighborhood	Total Complaints	Total Households
Grand Total	4,397	44
Mission Beach	3,262	2
Spring Valley	543	1
Point Loma Heights	128	7
Sunset Cliffs	111	2
La Jolla Heights	86	1
Beach Barber Tract	65	3
Ocean Beach	59	4
Pacific Beach	44	1
Del Mar	29	1
Bird Rock	23	4
Loma Portal	15	4
Muirlands	7	1
La Mesa	6	1
Del Mar Heights	4	1
La Jolla Alta	4	1
Midway District	2	1
South Park	2	2
Wooded Area	2	2
Alpine	1	1
Casa De Oro-Mount Helix	1	1
El Cerrito	1	1
La Playa	1	1
Lower Hermosa	1	1

Location of Complaints



Data Disclaimer: We do our best to ensure that the data we release is complete, accurate and useful. However, because we do not create the data, and because the processing required to make the data useful is complex, we are not liable for omissions, inaccuracies or changes in the data.