

QUIETER HOME PROGRAM



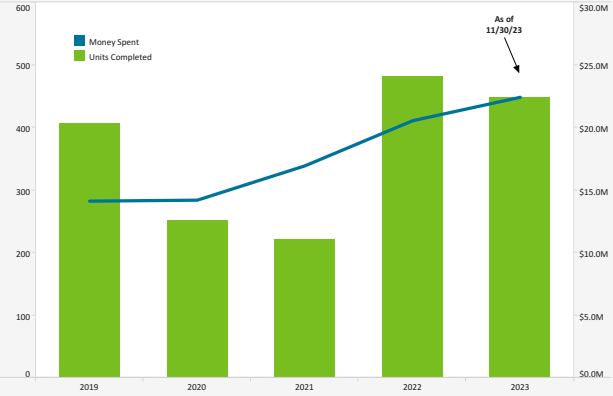
Quieter Home Program As Of: 11/30/2023

Status of Homes	
Added this Month	12
Homes Completed this Month	43
Homes on Wait List	390
Estimated Homes to Complete in CY 2023	400
Total Homes Completed	5,595
Amount Spent on Multi-Family Units (USD) this Month	364,043

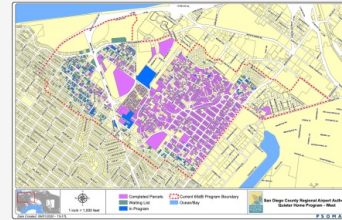
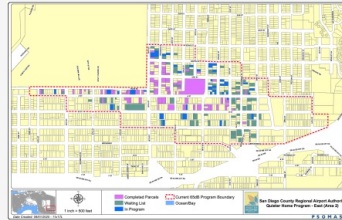
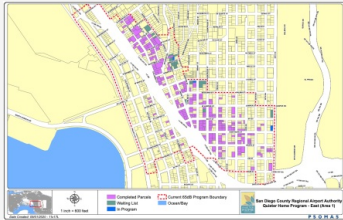
Project	Estimated Construction Start	# Homes
12.3	In Process	37
12.4 (QNRP)	Winter 2024	3
12.5 (QNRP)	Summer 2024	3
12.6	In Process	62
12.7	In Process	34
12.8	Winter 2023	12
12.9	Spring 2024	36
12.10	Winter 2024	34
12.11	Spring 2024	25
12.12	Spring 2024	29
13.1	Summer 2024	30
13.2	Summer 2024	27
13.3	Fall 2024	25
13.4	Fall 2024	24
13.5	Winter 2024	36
13.6	Winter 2025	34
13.7	Winter 2025	28
13.8	Spring 2025	38
13.12 (QNRP)	Summer 2025	1

QNRP: Quieter Non-Residential Program

From 2001 – 2009, \$89.8 Million Was Spent To Complete 1,334 Homes



Program Boundary Maps



Data Disclaimer: We do our best to ensure that the data we release is complete, accurate and useful. However, because we do not create the data, and because the processing required to make the data useful is complex, we are not liable for omissions, inaccuracies or changes in the data.

CURFEW VIOLATIONS



Noise Curfew Violations: Any aircraft that departs after 11:30 p.m. and before 6:30 a.m. is subject to a penalty.

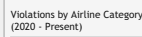
Curfew Violations (October - November 2023)

Date, Time	Airline	Aircraft Type	Status
10/5/2023, 11:49 PM	American Airlines	B738	Not Fined
10/7/2023, 11:39 PM	jetBlue Airways	A320	FINED - \$60,000
10/8/2023, 03:15 AM	Null	GALX	FINED - \$2,000
10/8/2023, 11:45 PM	jetBlue Airways	A320	Not Fined
10/15/2023, 12:29 AM	XOJET Inc	CL30	Not Fined
10/16/2023, 11:41 PM	Null	GLF4	FINED - \$2,000
10/18/2023, 11:54 PM	SkyWest Airlines	E75L	Not Fined
10/28/2023, 11:50 PM	Alaska Airlines	B39M	Not Fined
11/5/2023, 11:47 PM	United Airlines	B752	Not Fined
11/14/2023, 11:47 PM	United Airlines	B39M	Pending Review
11/15/2023, 11:31 PM	Alaska Airlines	B39M	Pending Review
11/15/2023, 11:34 PM	United Airlines	B752	Pending Review
11/16/2023, 12:30 AM	jetBlue Airways	A320	Pending Review
11/19/2023, 12:36 AM	United Airlines	B752	Pending Review
11/20/2023, 11:59 PM	Alaska Airlines	B738	Pending Review
11/21/2023, 11:30 PM	United Airlines	B739	Pending Review
11/26/2023, 12:49 AM	SUNRISE ASSET MANAGEMENT LLC	A320	FINED - \$6,000

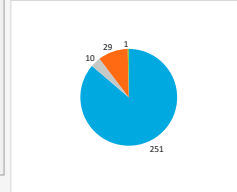
Annual Violations and Penalties Assessed (Year-to-Date)

Year	Total Violations	Fines Assessed
2019	46	\$132,000
2020	18	\$16,000
2021	52	\$204,000
2022	89	\$804,000
2023	133	\$972,000

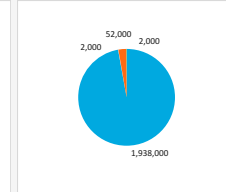
Airline Category



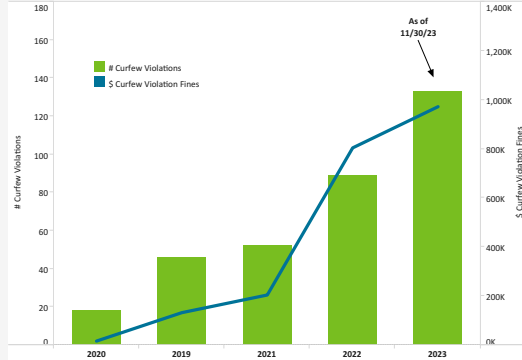
Violations by Airline Category (2020 - Present)



Fines Assessed by Airline Category (2020 - Present)



Curfew Violations and Penalties Assessed (by Year)



Airline Category

Airline Category	# Curfew Violations	\$ Curfew Violation Fines
A - Air	251	\$1,938,000
C - Cargo	10	\$2,000
G - G/A	29	\$52,000
M - Mil	1	\$2,000

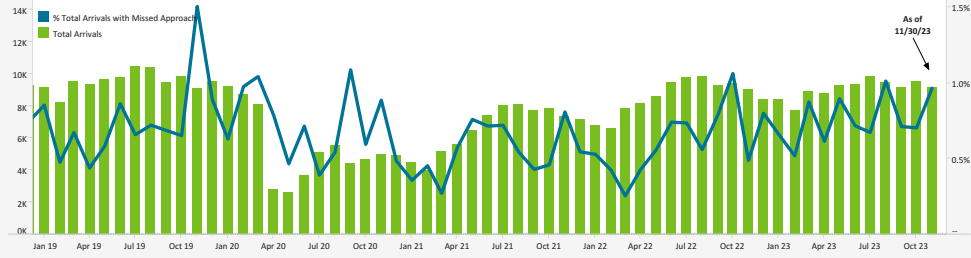
Data Disclaimer: We do our best to ensure that the data we release is complete, accurate and useful. However, because we do not create the data, and because the processing required to make the data useful is complex, we are not liable for omissions, inaccuracies or changes in the data.

MISSED APPROACH STATISTICS



Missed Approaches: A procedure to maintain safety, initiated by the pilot or Air Traffic Control (ATC) for a pilot to abandon the approach to landing.

Total Arrivals Compared to (%) of Missed Approaches

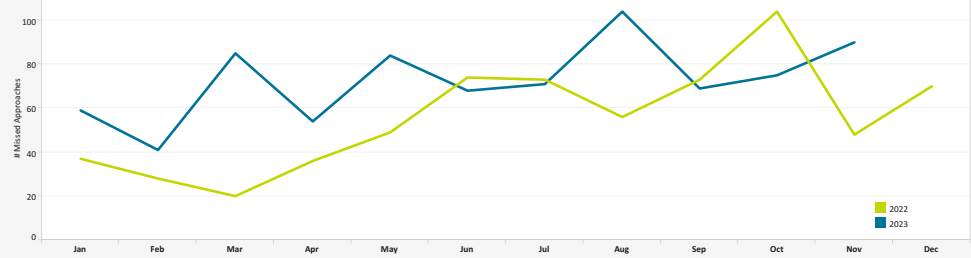


	2019	2020	2021	2022	2023
% Total Arrivals with Missed Approach	0.8%	0.7%	0.6%	0.6%	0.8%
Total Arrivals	114,193	64,576	79,016	102,974	99,302
Total Missed Approaches	895	508	470	668	800

Missed Approach Location Statistics

	Sep		Oct		Nov			Sep	Oct	Nov
	Day	Night	Day	Night	Day	Night				
Between Noise Dot #1 - Noise Dot #2	0	0	2	0	1	3	Between 265°-295° Heading (Standard)	39	35	52
Between Noise Dot #2 - JETI	22	4	16	4	15	7	East of Airport	12	29	19
Between JETI - Noise Dot #3	10	3	12	1	24	2	Left of 265°	11	10	15
Between Noise Dot #3 - Noise Dot #4	9	1	9	1	13	0	Right of 295°	6	0	3
Between Noise Dot #4 - Noise Dot #5	1	0	0	0	3	0				

Total Missed Approaches



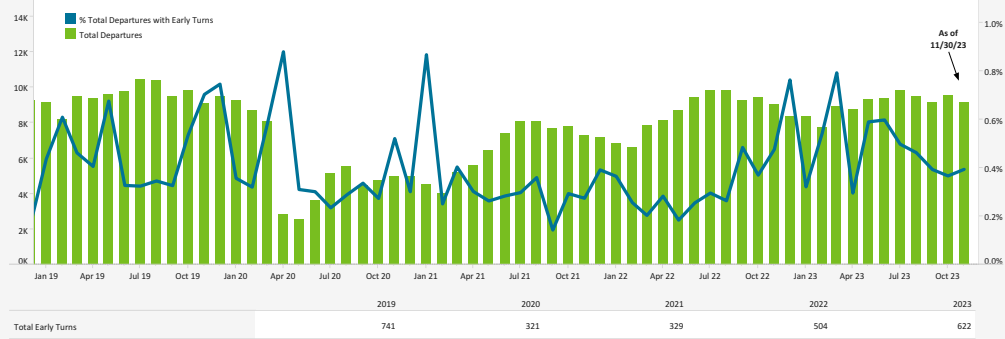
Data Disclaimer: We do our best to ensure that the data we release is complete, accurate and useful. However, because we do not create the data, and because the processing required to make the data useful is complex, we are not liable for omissions, inaccuracies or changes in the data.

EARLY TURN STATISTICS



The Airport Authority has defined early turns as those aircraft that turn right prior to FAA Noise Dot #1 at the 295-degree heading or turn left prior to the FAA Noise Dot #3 at the 265-degree heading.

Total Departures Compared to (%) of Early Turns

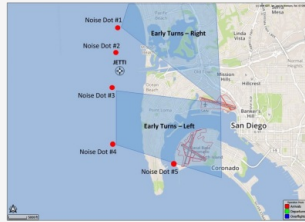


Departure Statistics

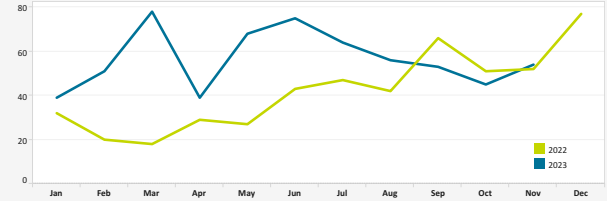
	Sep	Oct	Nov
Jets Turning Left	4,549	4,827	4,655
Between Z2000 and Noise Dots	502	505	425
Compliant with Nighttime departure Heading (290°)	382	440	394
Not Nighttime Compliant - Over La Jolla	28	9	39
Not Nighttime Compliant - Straight Out	3	13	3
Not Nighttime Compliant - East	0	1	24

Cause of Early Turns

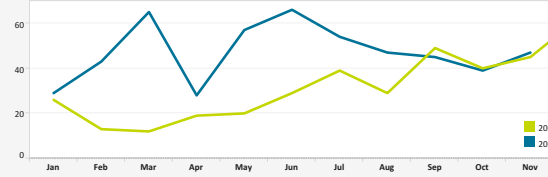
	Sep	Oct	Nov
Caused by ATC Vectors	50	39	51
Caused by Pilot Deviation	2	3	2
Caused by Weather	1	3	1



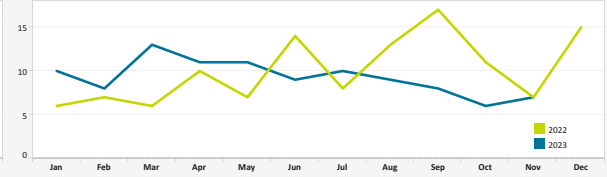
Total Early Turns



Over Point Loma



Over Mission Beach



Early Turns by Operator (November 2023)

Airline	Left Early Turns	Total Operator Departures	% Departures with Left Early Turns
Southwest Airlines	7	5,967	0.1%
SkyWest Airlines	1	1,776	0.1%
United Airlines	5	1,680	0.3%
Alaska Airlines	6	1,641	0.4%
Delta Air Lines	7	1,509	0.5%
American Airlines	5	1,455	0.3%
General Aviation	3	715	0.4%
Frontier Airlines	2	442	0.5%
NetJets	2	338	0.6%
jetBlue Airways	1	286	0.3%
Flexjet	1	135	0.7%
Horizon Air	1	80	1.3%
Swift Air	1	46	2.2%
Lufthansa	1	24	4.2%
Chrysler Aviation Inc	1	20	5.0%
Jetran International Ltd	1	14	7.1%
CHOICE EXCHANGE LLC	1	9	11.1%
CITATION 0245 LLC	1	7	14.3%

Early Turns by Operator (November 2023)

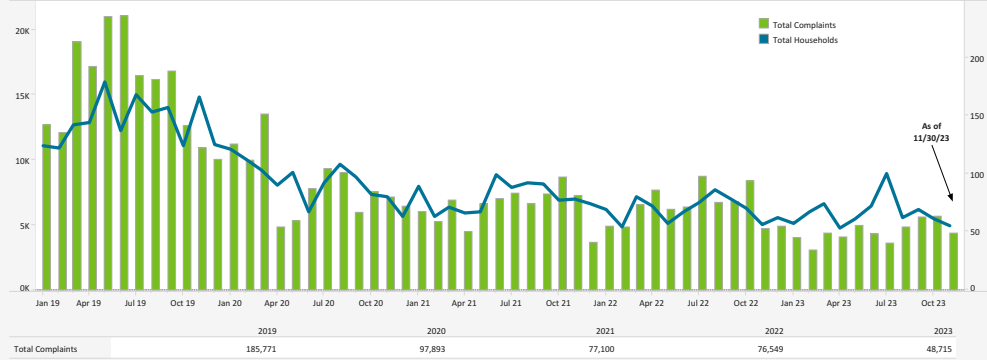
Airline	Right Early Turns	Total Operator Departures	% Departures with Right Early Turns
United Airlines	2	1,680	0.1%
Delta Air Lines	1	1,509	0.1%
American Airlines	1	1,455	0.1%
General Aviation	1	715	0.1%
FedEx Express	1	147	0.7%
Chrysler Aviation Inc	1	20	5.0%

Data Disclaimer: We do our best to ensure that the data we release is complete, accurate and useful. However, because we do not create the data, and because the processing required to make the data useful is complex, we are not liable for omissions, inaccuracies or changes in the data.

NOISE COMPLAINT STATISTICS

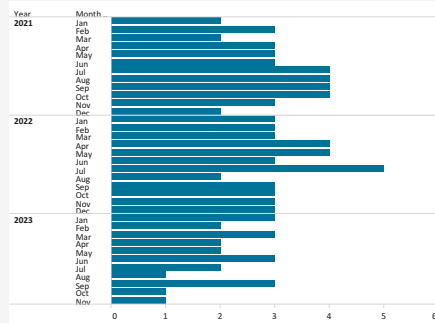


Total Complaints Compared to Total Households

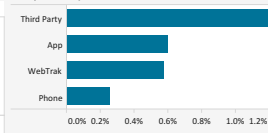


The Authority reports all complaints.

Number of Households with 500+ Complaints per Month



Complaints by Contact Method



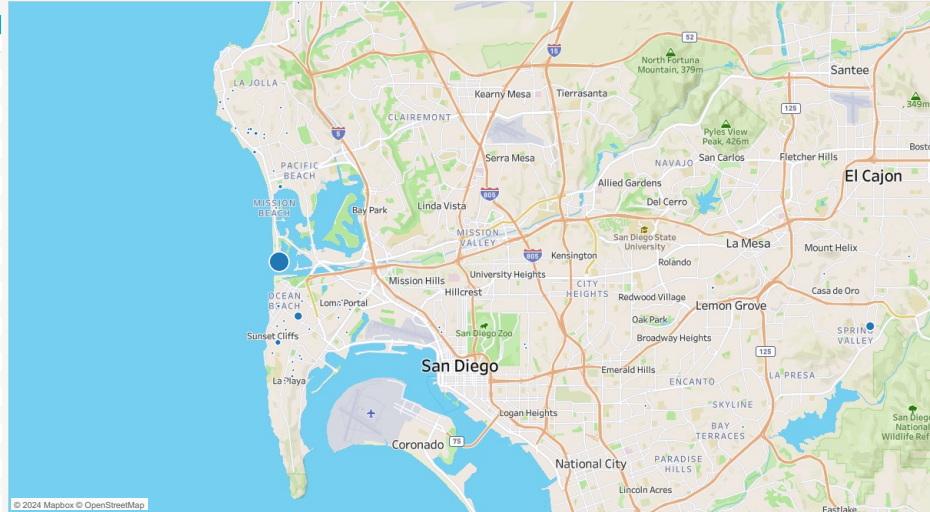
Disturbance Type

Disturbance Type	# Complaints	% Total
Too Loud	4,293	99.0%
Overflight	16	0.4%
Curfew Violation	15	0.3%
Suspected Off Course	5	0.1%
Increased Flight Volume	2	0.0%
Off Course	2	0.0%
Too Low	2	0.0%
Other	1	0.0%

Number of Complaints by Neighborhood (November 2023)

Neighborhood	Total Complaints	Total Households
Grand Total	4,336	55
Mission Beach	2,744	3
Spring Valley	473	1
Point Loma Heights	429	5
Sunset Cliffs	179	3
Bird Rock	117	5
Pacific Beach	80	3
Muirlands	58	1
Ocean Beach	45	2
Del Mar	42	1
Beach Barber Tract	40	3
La Jolla Heights	34	2
La Mesa	30	1
Rooseville-Fleet Ridge	19	2
Wooded Area	15	5
Casa De Oro-Mount Helix	7	2
Loma Portal	6	5
Del Mar Heights	5	1
Bay Terraces	3	1
La Jolla Alta	2	1
South Park	2	2
Bankers Hill	1	1
La Jolla Mesa	1	1
Liberty Station	1	1
Lower Hermosa	1	1
Middletown	1	1
Valencia Park	1	1

Location of Complaints



Data Disclaimer: We do our best to ensure that the data we release is complete, accurate and useful. However, because we do not create the data, and because the processing required to make the data useful is complex, we are not liable for omissions, inaccuracies or changes in the data.