

QUIETER HOME PROGRAM



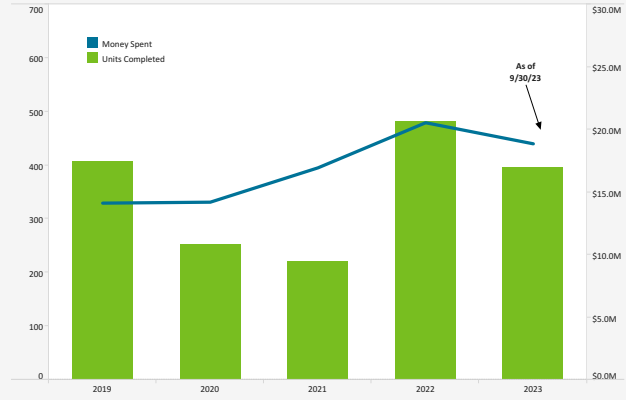
Quieter Home Program As Of: 9/30/2023

Status of Homes	
Added this Month	16
Homes Completed this Month	59
Homes on Wait List	370
Estimated Homes to Complete in CY 2023	400
Total Homes Completed	5,542
Amount Spent on Multi-Family Units (USD) this Month	413,705

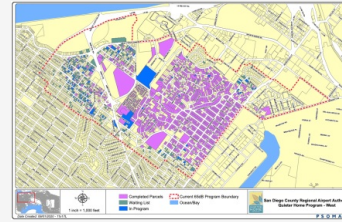
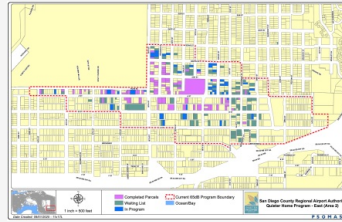
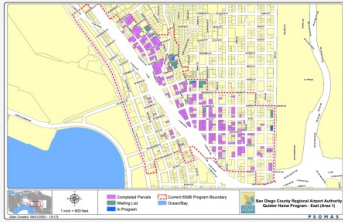
Project	Estimated Construction Start	# Homes
11.11	In Process	48
12.1	In Process	33
12.2	In Process	36
12.3	In Process	37
12.4 (QNRP)	Winter 2024	3
12.5 (QNRP)	Summer 2024	3
12.6	In Process	62
12.7	Fall 2023	34
12.8	Winter 2023	12
12.9	Spring 2024	36
12.10	Winter 2024	34
12.11	Spring 2024	25
12.12	Spring 2024	29
13.1	Summer 2024	30
13.2	Summer 2024	27
13.3	Fall 2024	25
13.4	Fall 2024	26
13.5	Winter 2024	48
13.6	Winter 2025	33
13.7	Winter 2025	37
13.8	Spring 2025	46

QNRP: Quieter Non-Residential Program

From 2011 – 2019, \$89.8 Million Was Spent To Complete 1,334 Homes



Program Boundary Maps



Data Disclaimer: We do our best to ensure that the data we release is complete, accurate and useful. However, because we do not create the data, and because the processing required to make the data useful is complex, we are not liable for omissions, inaccuracies or changes in the data.

CURFEW VIOLATIONS



Curfew Violations (August - September 2023)

Date, Time	Airline	Aircraft Type	Status
8/14/2023, 12:23 AM	SkyWest Airlines	E75L	Not Fined
9/3/2023, 02:03 AM	Allegiant Air	A320	Pending Review
9/11/2023, 11:42 PM	jetBlue Airways	A321	Pending Review
9/18/2023, 11:55 PM	SkyWest Airlines	E75L	Pending Review
9/24/2023, 12:35 AM	jetBlue Airways	A320	Pending Review
9/26/2023, 12:28 AM	jetBlue Airways	A321	Pending Review

Annual Violations and Penalties Assessed (Year-to-Date)

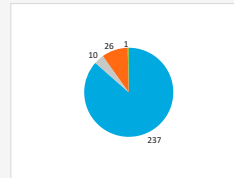
Year	Total Violations	Fines Assessed
2019	46	\$132,000
2020	18	\$16,000
2021	52	\$204,000
2022	89	\$804,000
2023	111	\$864,000

Noise Curfew Violations: Any aircraft that departs after 11:30 p.m. and before 6:30 a.m. is subject to a penalty.

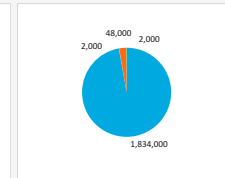
Airline Category

- A - Air
- G - G/A
- C - Cargo
- M - Mil

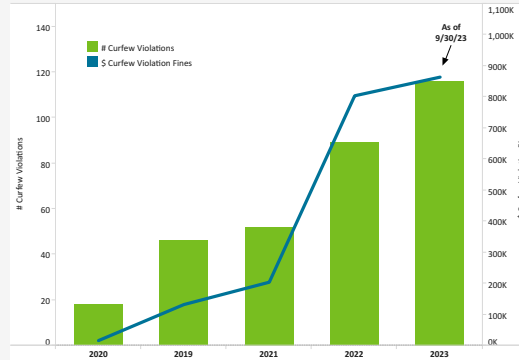
Violations by Airline Category (2020 - Present)



Fines Assessed by Airline Category (2020 - Present)



Curfew Violations and Penalties Assessed (by Year)



Airline Category

Airline Category	# Curfew Violations	\$ Curfew Violation Fines
A - Air	237	\$1,834,000
C - Cargo	10	\$2,000
G - G/A	26	\$48,000
M - Mil	1	\$2,000

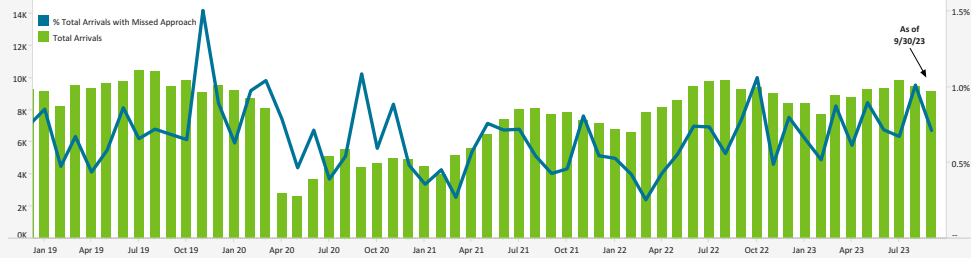
Data Disclaimer: We do our best to ensure that the data we release is complete, accurate and useful. However, because we do not create the data, and because the processing required to make the data useful is complex, we are not liable for omissions, inaccuracies or changes in the data.

MISSED APPROACH STATISTICS



Missed Approaches: A procedure to maintain safety, initiated by the pilot or Air Traffic Control (ATC) for a pilot to abandon the approach to landing.

Total Arrivals Compared to (%) of Missed Approaches

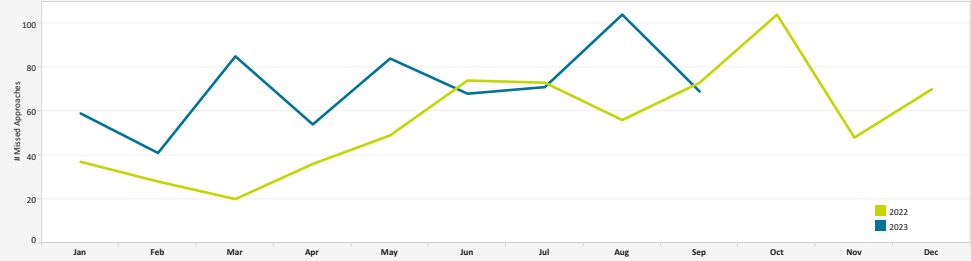


	2019	2020	2021	2022	2023
% Total Arrivals with Missed Approach	0.8%	0.7%	0.6%	0.6%	0.7%
Total Arrivals	114,193	64,576	79,016	102,974	80,686
Total Missed Approaches	895	508	470	668	635

Missed Approach Location Statistics

	Jul		Aug		Sep			Jul	Aug	Sep
	Day	Night	Day	Night	Day	Night				
Between Noise Dot #1 - Noise Dot #2	1	2	0	0	0	0	Between 265°-295° Heading (Standard)	49	64	39
Between Noise Dot #2 - JETI	22	2	27	6	22	4	East of Airport	6	29	12
Between JETI - Noise Dot #3	18	4	29	1	10	3	Left of 265°	12	8	11
Between Noise Dot #3 - Noise Dot #4	10	0	8	0	9	1	Right of 295°	3	4	6
Between Noise Dot #4 - Noise Dot #5	2	0	0	0	1	0				

Total Missed Approaches



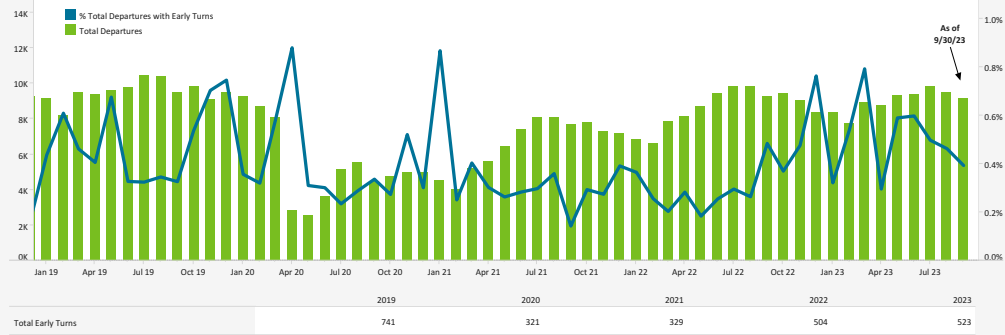
Data Disclaimer: We do our best to ensure that the data we release is complete, accurate and useful. However, because we do not create the data, and because the processing required to make the data useful is complex, we are not liable for omissions, inaccuracies or changes in the data.

EARLY TURN STATISTICS



The Airport Authority has defined early turns as those aircraft that turn right prior to FAA Noise Dot #1 at the 295-degree heading or turn left prior to the FAA Noise Dot #3 at the 265-degree heading.

Total Departures Compared to (%) of Early Turns

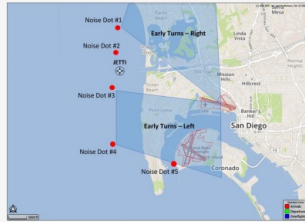


Departure Statistics

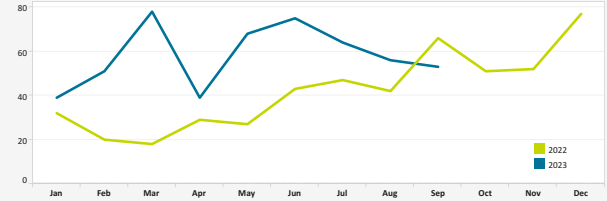
	Jul	Aug	Sep
Jets Turning Left	4,823	4,680	4,549
Between Z2000 and Noise Dots	468	637	502
Compliant with Nighttime departure Heading (290°)	535	464	382
Not Nighttime Compliant - Over La Jolla	37	23	28
Not Nighttime Compliant - Straight Out	5	2	3
Not Nighttime Compliant - East	1	17	0

Cause of Early Turns

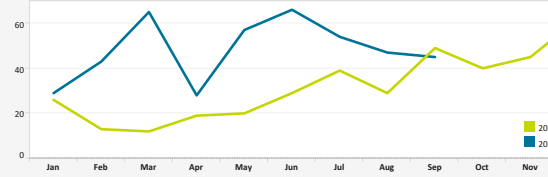
	Jul	Aug	Sep
Caused by ATC Vectors	60	53	50
Caused by Pilot Deviation	2	1	2
Caused by Weather	1	2	1



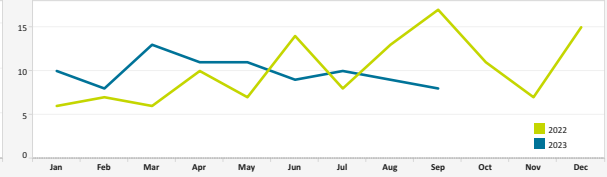
Total Early Turns



Over Point Loma



Over Mission Beach



Early Turns by Operator (September 2023)

Airline	Left Early Turns	Total Operator Departures	% Departures with Left Early Turns
Southwest Airlines	15	5,882	0.3%
United Airlines	6	1,842	0.3%
Delta Air Lines	7	1,616	0.4%
Alaska Airlines	2	1,561	0.1%
American Airlines	6	1,421	0.4%
General Aviation	1	798	0.1%
Netjets	2	342	0.6%
jetBlue Airways	1	270	0.4%
Aeromexico	1	32	3.1%
CHOICE EXCHANGE LLC	1	8	12.5%
ROMANZA AVIATION LLC	1	4	25.0%
PC24 LLC	1	2	50.0%
AEROWINGS LLC	1	2	50.0%

Early Turns by Operator (September 2023)

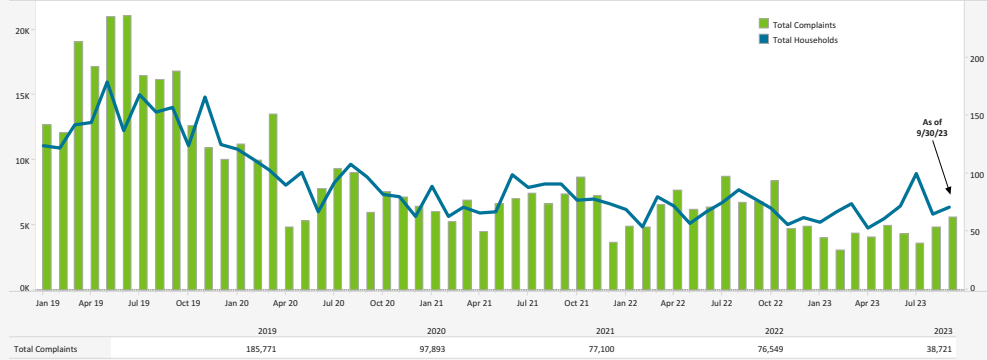
Airline	Right Early Turns	Total Operator Departures	% Departures with Right Early Turns
Southwest Airlines	1	5,882	0.0%
United Airlines	1	1,842	0.1%
Delta Air Lines	1	1,616	0.1%
Alaska Airlines	1	1,561	0.1%
SkyWest Airlines	1	1,559	0.1%
General Aviation	1	798	0.1%
INTEL CORP	1	10	10.0%
GRB PARTNERS LLC	1	2	50.0%

Data Disclaimer: We do our best to ensure that the data we release is complete, accurate and useful. However, because we do not create the data, and because the processing required to make the data useful is complex, we are not liable for omissions, inaccuracies or changes in the data.

NOISE COMPLAINT STATISTICS

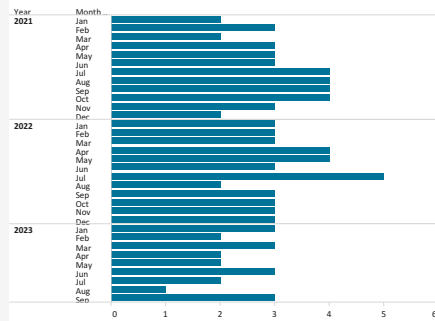


Total Complaints Compared to Total Households

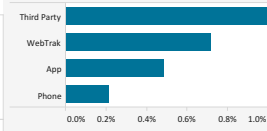


The Authority reports all complaints.

Number of Households with 500+ Complaints per Month



Complaints by Contact Method



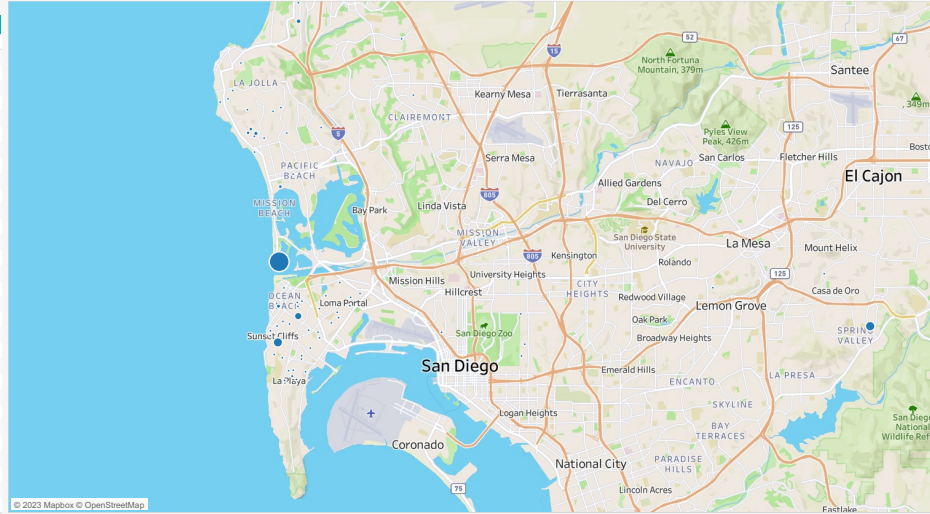
Disturbance Type

Disturbance Type	# Complaints	% Total
Too Loud	5,520	99.0%
Curfew Violation	23	0.4%
Too Low	10	0.2%
Suspected Off Course	7	0.1%
Overflight	6	0.1%
Other	5	0.1%
Off Course	2	0.0%
Fixed Wing	1	0.0%
Increased Flight Volume	1	0.0%

Number of Complaints by Neighborhood (September 2023)

Neighborhood	Total Complaints	Total Households
Grand Total	5,575	71
Mission Beach	3,233	2
Sunset Cliffs	634	5
Spring Valley	625	1
Point Loma Heights	394	10
La Jolla Heights	128	2
Blind Rock	123	4
Muirlands	87	2
Ocean Beach	81	3
Pacific Beach	80	4
Loma Portal	48	7
Beach Barber Tract	46	3
Del Mar	27	1
Wooded Area	12	6
La Mesa	9	1
Del Mar Heights	7	1
Roseville-Fleet Ridge	7	3
La Playa	6	2
Casa De Oro-Mount Helix	4	1
Clairemont	4	1
La Jolla Mesa	4	1
South Park	4	2
Seawatch Community	3	1
Fleet Ridge	2	1
Caliremont	1	1
La Jolla Alta	1	1
La Jolla Village	1	1
Middletown	1	1
Mission Valley	1	1
North Park	1	1
University City	1	1

Location of Complaints



Data Disclaimer: We do our best to ensure that the data we release is complete, accurate and useful. However, because we do not create the data, and because the processing required to make the data useful is complex, we are not liable for omissions, inaccuracies or changes in the data.