

QUIETER HOME PROGRAM



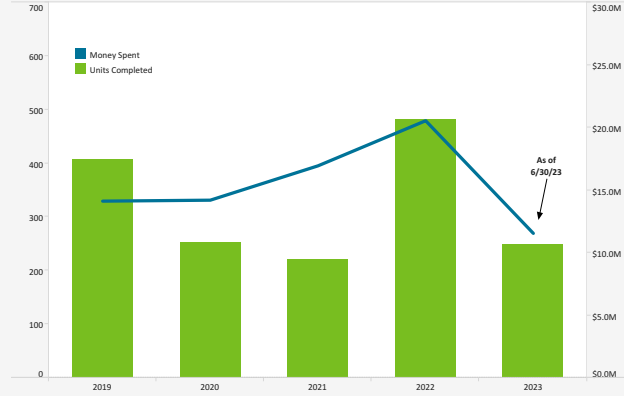
Quieter Home Program As Of: 6/30/2023

Status of Homes	
Added this Month	15
Homes Completed this Month	48
Estimated Homes to Complete in CY 2023	400
Homes on Wait List	508
Total Homes Completed	5,395
Amount Spent on Multi-Family Units (USD) this Month	799,377

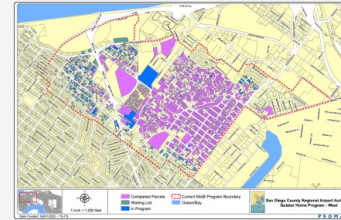
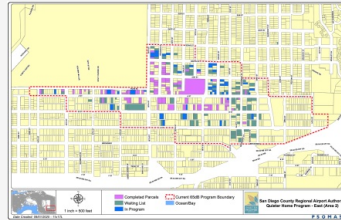
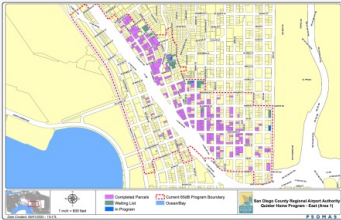
Project	Estimated Construction Start	# Homes
11.10	In Process	142
11.11	In Process	48
11.12	In Process	52
12.1	Summer 2023	33
12.2	In Process	35
12.3	Summer 2023	37
12.4 (QNRP)	Winter 2024	3
12.5 (QNRP)	Summer 2024	3
12.6	Summer 2023	62
12.7	Fall 2023	35
12.8	Winter 2023	12
12.9	Spring 2024	41
12.10	Winter 2024	39
12.11	Spring 2024	25
12.12	Spring 2024	32
13.1	Summer 2024	33
13.2	Summer 2024	38
13.3	Fall 2024	45
13.4	Fall 2024	36
13.5	Winter 2024	40

QNRP: Quieter Non-Residential Program

From 2001 – 2009, \$89.8 Million Was Spent To Complete 1,334 Homes



Program Boundary Maps



Data Disclaimer: We do our best to ensure that the data we release is complete, accurate and useful. However, because we do not create the data, and because the processing required to make the data useful is complex, we are not liable for omissions, inaccuracies or changes in the data.

CURFEW VIOLATIONS



Noise Curfew Violations: Any aircraft that departs after 11:30 p.m. and before 6:30 a.m. is subject to a penalty.

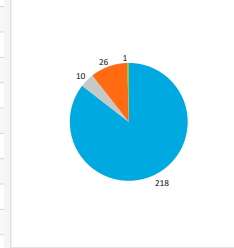
Curfew Violations (May - June 2023)

Date, Time	Airline	Aircraft Type	Status
5/20/2023, 01:54 AM	Frontier Airlines	A20N	Pending Review
5/20/2023, 11:31 PM	Frontier Airlines	A20N	Pending Review
5/20/2023, 12:30 AM	Frontier Airlines	A320	Pending Review
5/21/2023, 11:42 PM	Frontier Airlines	A20N	Pending Review
5/21/2023, 12:00 AM	Frontier Airlines	A20N	Pending Review
5/23/2023, 11:35 PM	Frontier Airlines	A20N	Pending Review
5/23/2023, 11:53 PM	Frontier Airlines	A20N	Pending Review
5/25/2023, 12:13 AM	Frontier Airlines	A20N	Pending Review
5/30/2023, 11:25 PM	United Airlines	B739	Pending Review
5/30/2023, 11:52 PM	United Airlines	B739	Pending Review
5/30/2023, 12:25 AM	American Airlines	A21N	Pending Review
6/4/2023, 12:14 AM	Air Canada	B38M	Pending Review
6/6/2023, 11:45 PM	American Airlines	A21N	Not Fined
6/6/2023, 11:47 PM	FedEx Express	B763	Pending Review
6/18/2023, 01:07 AM	Air Canada	B38M	Pending Review
6/20/2023, 11:56 PM	Delta Air Lines	A321	Pending Review
6/20/2023, 12:24 AM	Execaire Inc	B38M	Pending Review
6/22/2023, 12:12 AM	United Airlines	A320	Pending Review
6/23/2023, 11:59 PM	Air Canada	B38M	Pending Review
6/24/2023, 11:57 PM	United Airlines	B738	Pending Review
6/25/2023, 11:32 PM	Delta Air Lines	A321	Pending Review
6/26/2023, 02:13 AM	Air Canada	B38M	Pending Review
6/26/2023, 11:32 PM	United Airlines	B739	Pending Review
6/26/2023, 11:50 PM	Air Canada	B38M	Pending Review

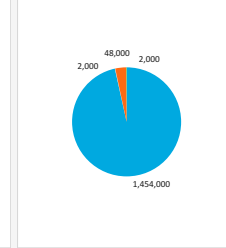
Annual Violations and Penalties Assessed (Year-to-Date)

Year	Total Violations	Fines Assessed
2019	46	\$132,000
2020	18	\$16,000
2021	52	\$204,000
2022	89	\$804,000
2023	97	\$484,000

Violations by Airline Category (2020 - Present)

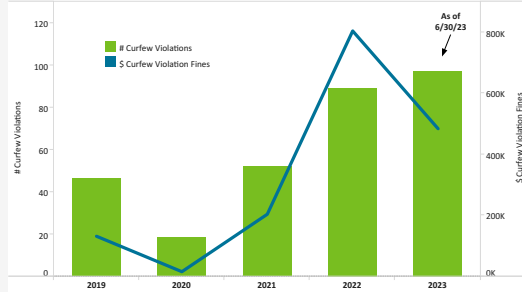


Fines Assessed by Airline Category (2020 - Present)



Airline Category	# Curfew Violations	\$ Curfew Violation Fines
A - Air	218	\$1,454,000
C - Cargo	10	\$2,000
G - G/A	26	\$48,000
M - Mil	1	\$2,000

Curfew Violations and Penalties Assessed (by Year)



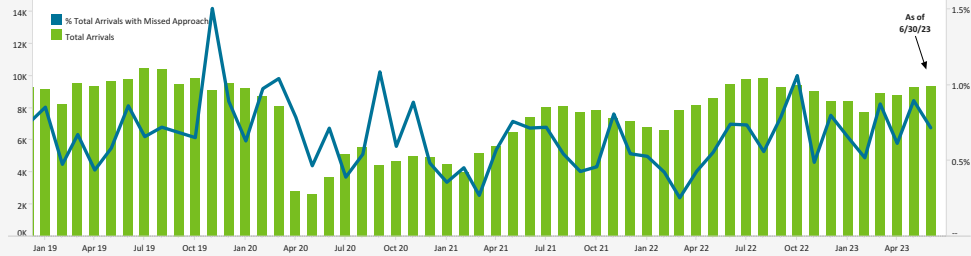
Data Disclaimer: We do our best to ensure that the data we release is complete, accurate and useful. However, because we do not create the data, and because the processing required to make the data useful is complex, we are not liable for omissions, inaccuracies or changes in the data.

MISSED APPROACH STATISTICS



Missed Approaches: A procedure to maintain safety, initiated by the pilot or Air Traffic Control (ATC) for a pilot to abandon the approach to landing.

Total Arrivals Compared to (%) of Missed Approaches

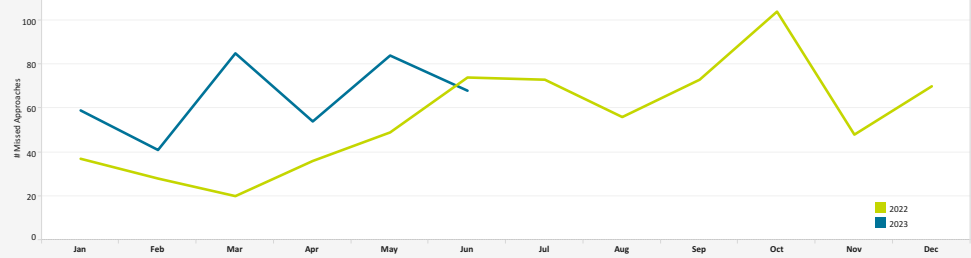


	2019	2020	2021	2022	2023
% Total Arrivals with Missed Approach	0.8%	0.7%	0.6%	0.6%	0.7%
Total Arrivals	114,193	64,576	79,016	102,974	52,313
Total Missed Approaches	895	508	470	668	391

Missed Approach Location Statistics

	Apr		May		Jun			Apr	May	Jun
	Day	Night	Day	Night	Day	Night				
Between Noise Dot #1 - Noise Dot #2	1	1	0	2	0	0	Between 265°-295° Heading (Standard)	27	50	32
Between Noise Dot #2 - JETTI	14	2	22	6	15	3	East of Airport	14	18	16
Between JETTI - Noise Dot #3	6	3	19	1	13	1	Left of 265°	10	10	14
Between Noise Dot #3 - Noise Dot #4	9	0	7	0	12	1	Right of 295°	3	3	5
Between Noise Dot #4 - Noise Dot #5	1	0	1	0	1	0				

Total Missed Approaches



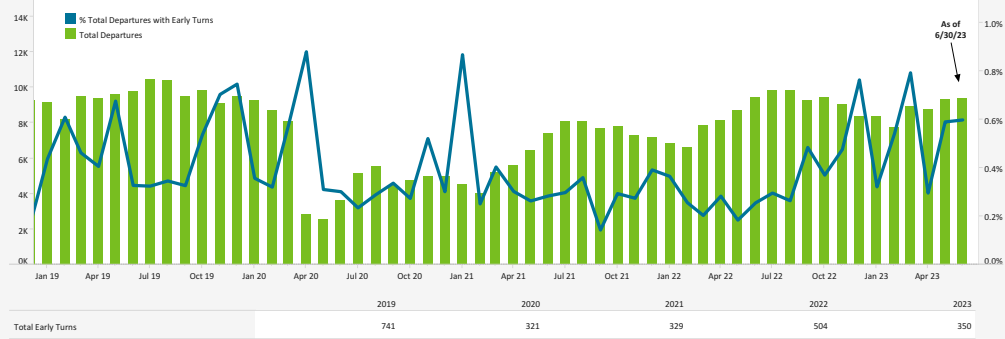
Data Disclaimer: We do our best to ensure that the data we release is complete, accurate and useful. However, because we do not create the data, and because the processing required to make the data useful is complex, we are not liable for omissions, inaccuracies or changes in the data.

EARLY TURN STATISTICS



The Airport Authority has defined early turns as those aircraft that turn right prior to FAA Noise Dot #1 at the 295-degree heading or turn left prior to the FAA Noise Dot #3 at the 265-degree heading.

Total Departures Compared to (%) of Early Turns

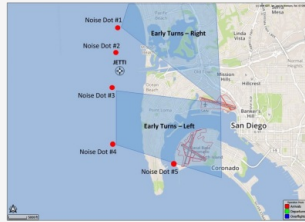


Departure Statistics

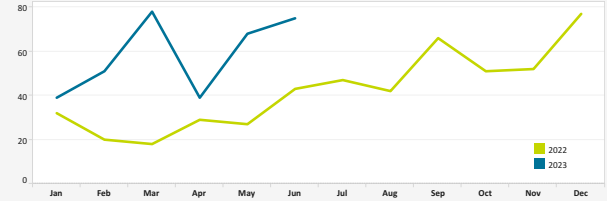
	Apr	May	Jun
Jets Turning Left	4,068	4,376	4,684
Between Z2000 and Noise Dots	508	700	546
Compliant with Nighttime departure Heading (290°)	472	546	583
Not Nighttime Compliant - Over La Jolla	42	22	42
Not Nighttime Compliant - Straight Out	3	4	7
Not Nighttime Compliant - East	43	0	0

Cause of Early Turns

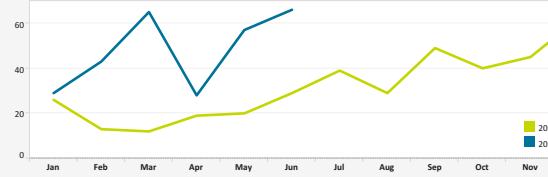
	Apr	May	Jun
Caused by ATC Vectors	29	67	74
Caused by Pilot Deviation	1	1	0
Caused by Weather	10	0	1



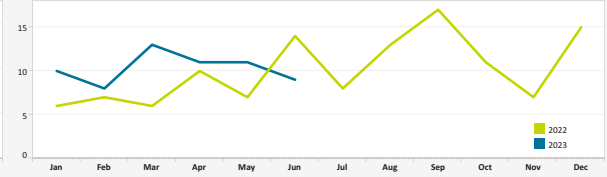
Total Early Turns



Over Point Loma



Over Mission Beach



Early Turns by Operator (June 2023)

Airline	Left Early Turns	Total Operator Departures	% Departures with Left Early Turns
Southwest Airlines	13	6,280	0.2%
United Airlines	7	1,728	0.4%
Alaska Airlines	4	1,623	0.2%
SkyWest Airlines	1	1,600	0.1%
Delta Air Lines	12	1,597	0.8%
American Airlines	10	1,379	0.7%
General Aviation	5	682	0.7%
Frontier Airlines	5	445	1.1%
jetBlue Airways	3	299	1.0%
Air Canada	1	150	0.7%
British Airways	1	58	1.7%
Flight Options	1	14	7.1%
Jet Linx Aviation Corp	1	9	11.1%
CRAIG AIR LLC	1	2	50.0%
WESTWAYS AVIATION LLC	1	1	100.0%

Early Turns by Operator (June 2023)

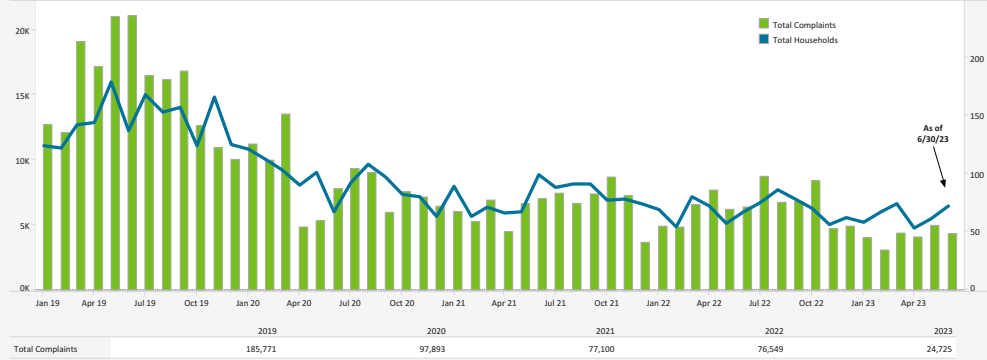
Airline	Right Early Turns	Total Operator Departures	% Departures with Right Early Turns
Southwest Airlines	2	6,280	0.0%
Alaska Airlines	1	1,623	0.1%
Delta Air Lines	1	1,597	0.1%
General Aviation	3	682	0.4%
Air Canada	1	150	0.7%
Chrysler Aviation Inc	1	13	7.7%

Data Disclaimer: We do our best to ensure that the data we release is complete, accurate and useful. However, because we do not create the data, and because the processing required to make the data useful is complex, we are not liable for omissions, inaccuracies or changes in the data.

NOISE COMPLAINT STATISTICS

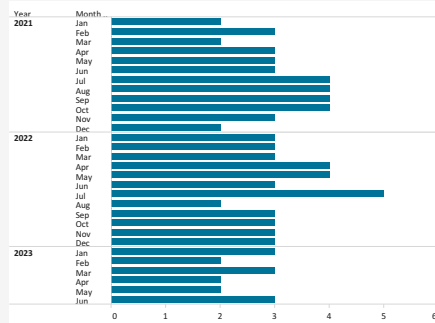


Total Complaints Compared to Total Households

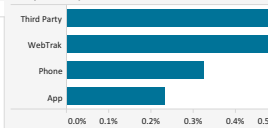


The Authority reports all complaints.

Number of Households with 500+ Complaints per Month



Complaints by Contact Method



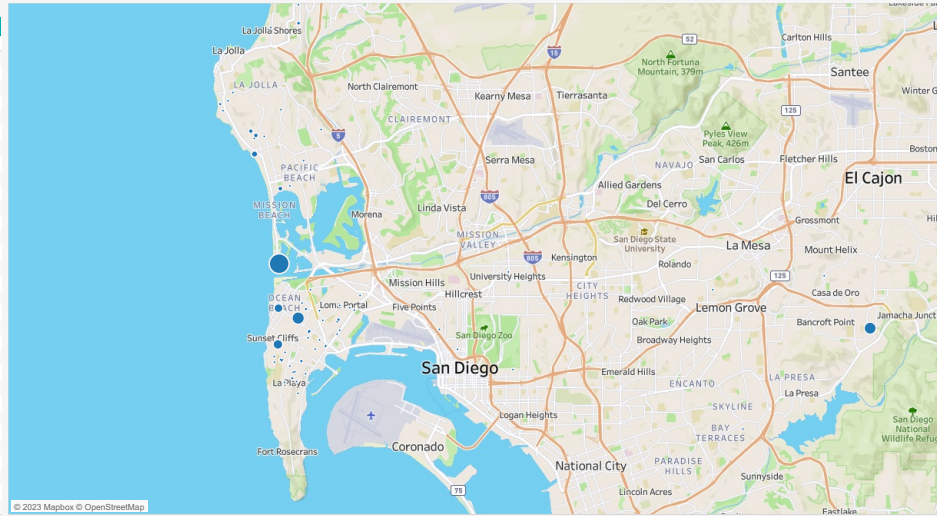
Disturbance Type

Disturbance Type	# Complaints	% Total
Too Loud	4,255	98.9%
Curfew Violation	24	0.6%
Suspected Off Course	14	0.3%
Too Low	6	0.1%
Off Course	3	0.1%
Increased Flight Volu...	1	0.0%

Number of Complaints by Neighborhood (June 2023)

Neighborhood	Total Complaints	Total Households
Grand Total	4,303	72
Mission Beach	1,786	2
Point Loma Heights	702	8
Spring Valley	596	1
Sunset Cliffs	387	5
Ocean Beach	287	1
Bird Rock	183	3
Pacific Beach	77	4
Muirlands	58	1
Loma Portal	46	7
Beach Barber Tract	38	3
La Jolla Heights	33	2
Roseville-Fleet Ridge	29	4
Wooded Area	19	9
Casa De Oro-Mount Helix	10	1
Bay Terraces	9	1
Del Mar Heights	8	1
La Playa	7	3
Bankers Hill	5	2
La Jolla Mesa	4	1
La Jolla Shores	4	1
Lower Hermosa	4	1
Roseville-Fleetridge	2	2
Del Mar	1	1
Golden Hill	1	1
La Jolla Alta	1	1
La Jolla Shores	1	1
La Mesa	1	1
Laguna Niguel	1	1
Loma Heights	1	1
Roseville-Fleetridge	1	1
University Heights	1	1

Location of Complaints



Data Disclaimer: We do our best to ensure that the data we release is complete, accurate and useful. However, because we do not create the data, and because the processing required to make the data useful is complex, we are not liable for omissions, inaccuracies or changes in the data.