

QUIETER HOME PROGRAM



Quieter Home Program As Of: 5/31/2023

| Status of Homes | |
|---|---------|
| Added this Month | 28 |
| Homes Completed this Month | 63 |
| Estimated Homes to Complete in CY 2023 | 400 |
| Homes on Wait List | 475 |
| Total Homes Completed | 5,347 |
| Amount Spent on Multi-Family Units (USD) this Month | 853,637 |

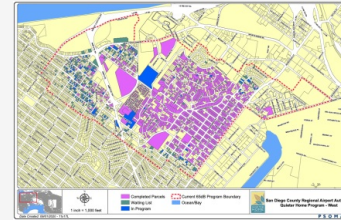
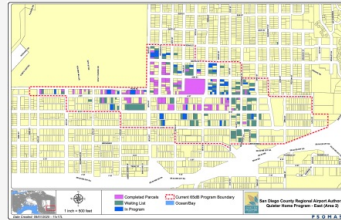
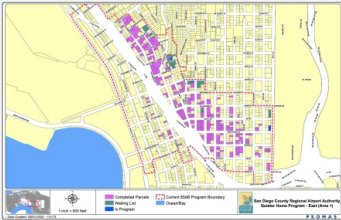
| Project | Estimated Construction Start | # Homes |
|-------------|------------------------------|---------|
| 11.10 | In Process | 142 |
| 11.11 | In Process | 48 |
| 11.12 | In Process | 52 |
| 12.1 | Summer 2023 | 33 |
| 12.2 | Spring 2023 | 35 |
| 12.3 | Summer 2023 | 37 |
| 12.4 (QNRP) | Winter 2024 | 3 |
| 12.5 (QNRP) | Summer 2024 | 3 |
| 12.6 | Summer 2023 | 62 |
| 12.7 | Fall 2023 | 35 |
| 12.8 | Winter 2023 | 12 |
| 12.9 | Spring 2024 | 41 |
| 12.10 | Winter 2024 | 39 |
| 12.11 | Spring 2024 | 25 |
| 12.12 | Spring 2024 | 32 |
| 13.1 | Summer 2024 | 33 |
| 13.2 | Summer 2024 | 38 |
| 13.3 | Fall 2024 | 45 |
| 13.4 | Fall 2024 | 36 |

QNRP: Quieter Non-Residential Program

From 2001 – 2009, \$89.8 Million Was Spent To Complete 1,334 Homes



Program Boundary Maps



Data Disclaimer: We do our best to ensure that the data we release is complete, accurate and useful. However, because we do not create the data, and because the processing required to make the data useful is complex, we are not liable for omissions, inaccuracies or changes in the data.

CURFEW VIOLATIONS



Noise Curfew Violations: Any aircraft that departs after 11:30 p.m. and before 6:30 a.m. is subject to a penalty.

Curfew Violations (April - May 2023)

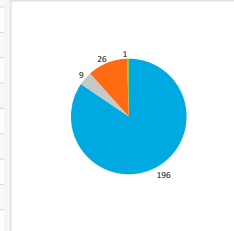
| Date, Time | Airline | Aircraft Type | Status |
|---------------------|-------------------|---------------|------------------|
| 4/5/2023, 12:22 AM | Frontier Airlines | A20N | FINED - \$20,000 |
| 4/10/2023, 11:40 PM | Delta Air Lines | B753 | Not Fined |
| 4/10/2023, 11:47 PM | jetBlue Airways | A320 | Not Fined |
| 4/13/2023, 01:34 AM | United Airlines | A320 | Not Fined |
| 4/13/2023, 12:16 AM | Frontier Airlines | A20N | FINED - \$20,000 |
| 4/15/2023, 11:36 PM | Frontier Airlines | A20N | FINED - \$20,000 |
| 4/16/2023, 11:36 PM | jetBlue Airways | A320 | FINED - \$50,000 |
| 4/27/2023, 11:48 PM | Delta Air Lines | B753 | Not Fined |
| 4/28/2023, 03:58 AM | Flexjet | GLF4 | FINED - \$2,000 |
| 5/20/2023, 01:54 AM | Frontier Airlines | A20N | Pending Review |
| 5/20/2023, 11:31 PM | Frontier Airlines | A20N | Pending Review |
| 5/20/2023, 12:30 AM | Frontier Airlines | A320 | Pending Review |
| 5/21/2023, 11:42 PM | Frontier Airlines | A20N | Pending Review |
| 5/21/2023, 12:00 AM | Frontier Airlines | A20N | Pending Review |
| 5/23/2023, 11:35 PM | Frontier Airlines | A20N | Pending Review |
| 5/23/2023, 11:53 PM | Frontier Airlines | A20N | Pending Review |
| 5/25/2023, 12:13 AM | Frontier Airlines | A20N | Pending Review |
| 5/30/2023, 11:52 PM | United Airlines | B739 | Pending Review |
| 5/30/2023, 12:25 AM | American Airlines | A21N | Pending Review |

Annual Violations and Penalties Assessed (Year-to-Date)

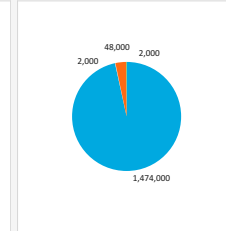
| Year | Total Violations | Fines Assessed |
|------|------------------|----------------|
| 2019 | 46 | \$132,000 |
| 2020 | 18 | \$16,000 |
| 2021 | 52 | \$204,000 |
| 2022 | 89 | \$804,000 |
| 2023 | 84 | \$504,000 |

Airline Category
 A - Air
 C - Cargo
 G - G/A
 M - Mil

Violations by Airline Category (2020 - Present)

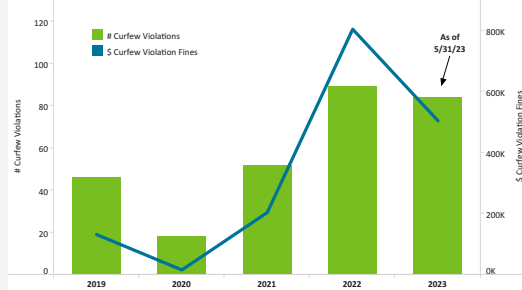


Fines Assessed by Airline Category (2020 - Present)



| Airline Category | # Curfew Violations | \$ Curfew Violation Fines |
|------------------|---------------------|---------------------------|
| A - Air | 196 | \$1,474,000 |
| C - Cargo | 9 | \$2,000 |
| G - G/A | 26 | \$48,000 |
| M - Mil | 1 | \$2,000 |

Curfew Violations and Penalties Assessed (by Year)



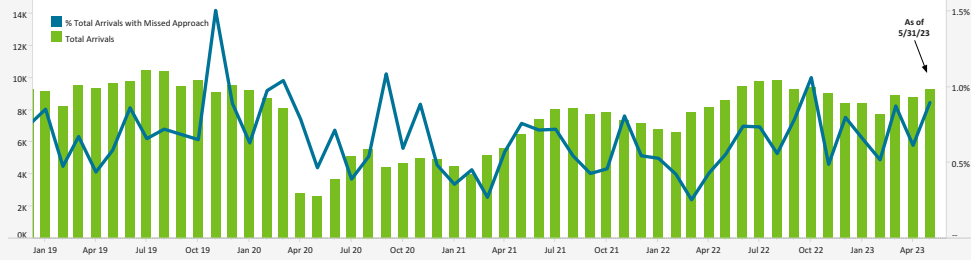
Data Disclaimer: We do our best to ensure that the data we release is complete, accurate and useful. However, because we do not create the data, and because the processing required to make the data useful is complex, we are not liable for omissions, inaccuracies or changes in the data.

MISSED APPROACH STATISTICS



Missed Approaches: A procedure to maintain safety, initiated by the pilot or Air Traffic Control (ATC) for a pilot to abandon the approach to landing.

Total Arrivals Compared to (%) of Missed Approaches

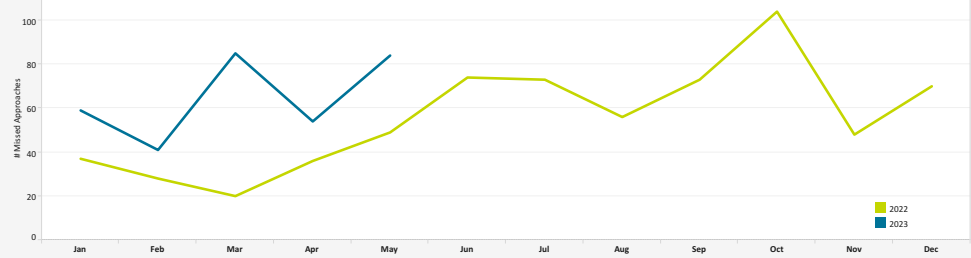


| | 2019 | 2020 | 2021 | 2022 | 2023 |
|---------------------------------------|---------|--------|--------|---------|--------|
| % Total Arrivals with Missed Approach | 0.8% | 0.7% | 0.6% | 0.6% | 0.7% |
| Total Arrivals | 114,193 | 64,576 | 79,016 | 102,974 | 42,985 |
| Total Missed Approaches | 895 | 508 | 470 | 668 | 323 |

Missed Approach Location Statistics

| | Mar | | Apr | | May | | | Mar | Apr | May |
|-------------------------------------|-----|-------|-----|-------|-----|-------|--------------------------------------|-----|-----|-----|
| | Day | Night | Day | Night | Day | Night | | | | |
| Between Noise Dot #1 - Noise Dot #2 | 2 | 0 | 1 | 1 | 1 | 2 | Between 265°-295° Heading (Standard) | 46 | 27 | 50 |
| Between Noise Dot #2 - JETI | 28 | 1 | 14 | 2 | 22 | 6 | East of Airport | 33 | 14 | 18 |
| Between JETI - Noise Dot #3 | 15 | 0 | 6 | 3 | 19 | 1 | Left of 265° | 6 | 10 | 10 |
| Between Noise Dot #3 - Noise Dot #4 | 4 | 0 | 9 | 0 | 7 | 0 | Right of 295° | 1 | 3 | 3 |
| Between Noise Dot #4 - Noise Dot #5 | 2 | 0 | 1 | 0 | 1 | 0 | | | | |

Total Missed Approaches



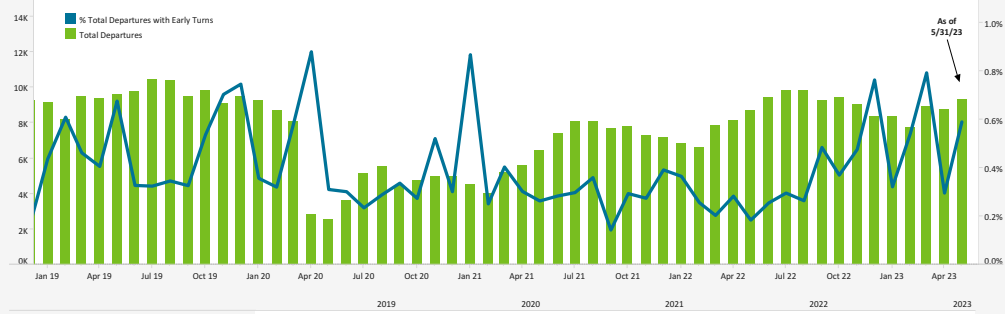
Data Disclaimer: We do our best to ensure that the data we release is complete, accurate and useful. However, because we do not create the data, and because the processing required to make the data useful is complex, we are not liable for omissions, inaccuracies or changes in the data.

EARLY TURN STATISTICS



The Airport Authority has defined early turns as those aircraft that turn right prior to FAA Noise Dot #1 at the 295-degree heading or turn left prior to the FAA Noise Dot #3 at the 265-degree heading.

Total Departures Compared to (%) of Early Turns

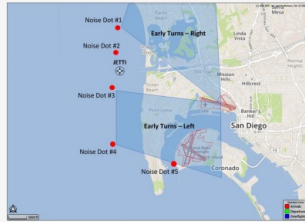


Departure Statistics

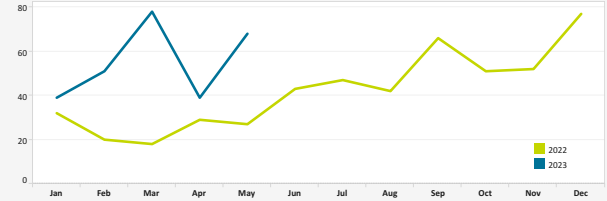
| | Mar | Apr | May |
|---|-------|-------|-------|
| Jets Turning Left | 4,044 | 4,068 | 4,376 |
| Between Z2000 and Noise Dots | 507 | 508 | 700 |
| Compliant with Nighttime departure Heading (290°) | 465 | 472 | 546 |
| Not Nighttime Compliant - Over La Jolla | 58 | 42 | 22 |
| Not Nighttime Compliant - Straight Out | 9 | 3 | 4 |
| Not Nighttime Compliant - East | 64 | 43 | 0 |

Cause of Early Turns

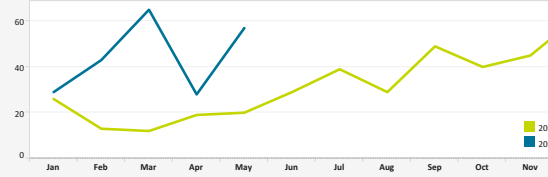
| | Mar | Apr | May |
|---------------------------|-----|-----|-----|
| Caused by ATC Vectors | 45 | 29 | 67 |
| Caused by Pilot Deviation | 1 | 1 | 1 |
| Caused by Weather | 32 | 10 | 0 |



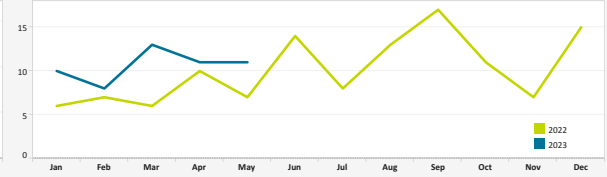
Total Early Turns



Over Point Loma



Over Mission Beach



Early Turns by Operator (May 2023)

| Airline | Left Early Turns | Total Operator Departures | % Departures with Left Early Turns |
|-----------------------|------------------|---------------------------|------------------------------------|
| Southwest Airlines | 13 | 6,331 | 0.2% |
| United Airlines | 7 | 1,762 | 0.4% |
| Delta Air Lines | 9 | 1,566 | 0.6% |
| Alaska Airlines | 2 | 1,561 | 0.1% |
| American Airlines | 8 | 1,361 | 0.6% |
| General Aviation | 2 | 759 | 0.3% |
| Frontier Airlines | 4 | 427 | 0.9% |
| jetBlue Airways | 1 | 337 | 0.3% |
| NetJets | 1 | 337 | 0.3% |
| Spirit Airlines | 1 | 256 | 0.4% |
| Horizon Air | 1 | 162 | 0.6% |
| Flejet | 1 | 118 | 0.8% |
| West Air (USA) | 1 | 96 | 1.0% |
| Allegiant Air | 1 | 76 | 1.3% |
| CITATION 0245 LLC | 1 | 5 | 20.0% |
| INFINITY & BEYOND LLC | 1 | 4 | 25.0% |
| JR AVIATION LLC | 2 | 3 | 66.7% |
| AUBURN AIRSPACE LLC | 1 | 2 | 50.0% |

Early Turns by Operator (May 2023)

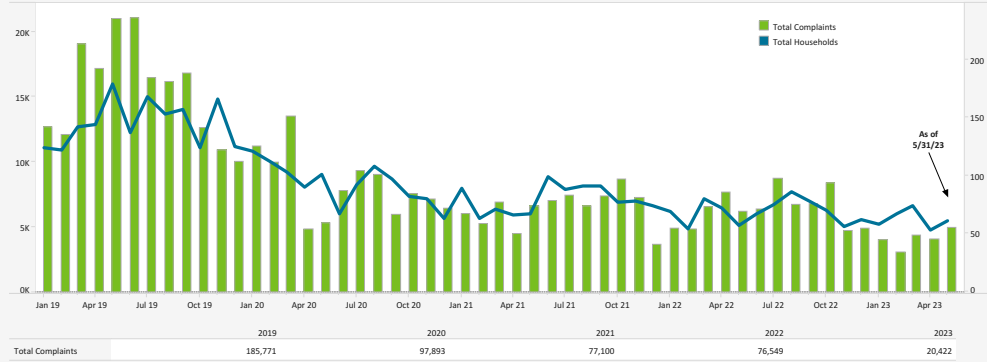
| Airline | Right Early Turns | Total Operator Departures | % Departures with Right Early Turns |
|-----------------------|-------------------|---------------------------|-------------------------------------|
| Southwest Airlines | 1 | 6,331 | 0.0% |
| Delta Air Lines | 1 | 1,566 | 0.1% |
| Alaska Airlines | 1 | 1,561 | 0.1% |
| American Airlines | 2 | 1,361 | 0.1% |
| General Aviation | 2 | 759 | 0.3% |
| Frontier Airlines | 1 | 427 | 0.2% |
| NetJets | 2 | 337 | 0.6% |
| Schubach Aviation Inc | 1 | 6 | 16.7% |

Data Disclaimer: We do our best to ensure that the data we release is complete, accurate and useful. However, because we do not create the data, and because the processing required to make the data useful is complex, we are not liable for omissions, inaccuracies or changes in the data.

NOISE COMPLAINT STATISTICS

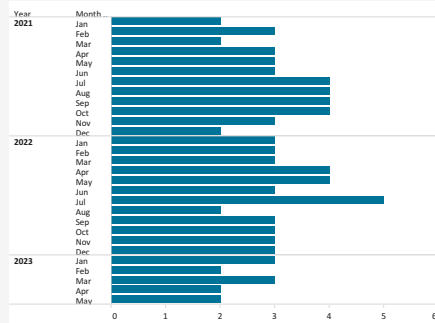


Total Complaints Compared to Total Households

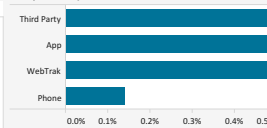


The Authority reports all complaints.

Number of Households with 500+ Complaints per Month



Complaints by Contact Method



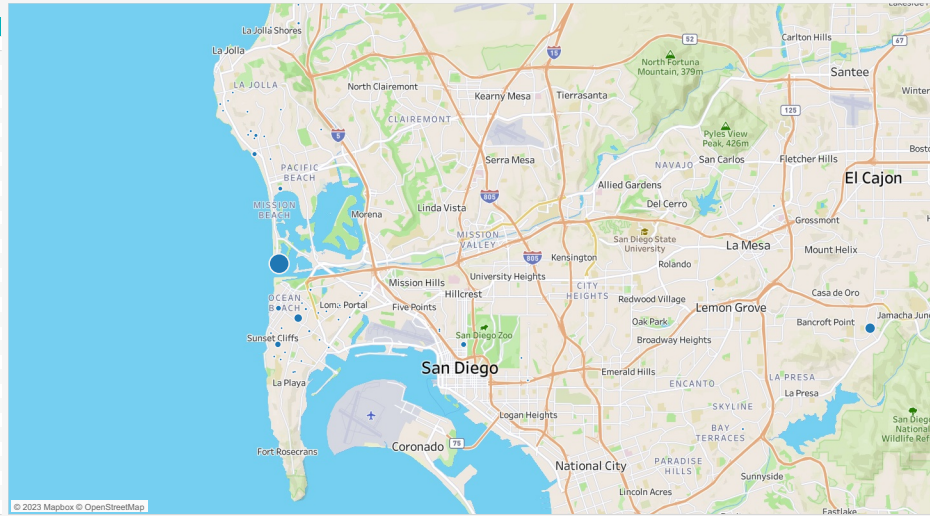
Disturbance Type

| Disturbance Type | # Complaints | % Total |
|--------------------------|--------------|---------|
| Too Loud | 4,856 | 98.2% |
| Too Low | 48 | 1.0% |
| Curfew Violation | 28 | 0.6% |
| Suspected Off Course | 8 | 0.2% |
| Overflight | 3 | 0.1% |
| Increased Flight Volu... | 1 | 0.0% |

Number of Complaints by Neighborhood (May 2023)

| Neighborhood | Total Complaints | Total Households |
|-----------------------|------------------|------------------|
| Grand Total | 4,944 | 61 |
| Mission Beach | 2,607 | 1 |
| Spring Valley | 662 | 1 |
| Point Loma Heights | 491 | 9 |
| Sunset Cliffs | 273 | 4 |
| Bankers Hill | 180 | 2 |
| Bird Rock | 175 | 4 |
| Ocean Beach | 168 | 1 |
| Pacific Beach | 104 | 3 |
| Muirlands | 70 | 2 |
| Beach Barber Tract | 40 | 3 |
| La Jolla Heights | 37 | 2 |
| Loma Portal | 28 | 4 |
| Del Mar | 27 | 1 |
| Bay Terraces | 25 | 1 |
| Lower Hermosa | 14 | 1 |
| Del Mar Heights | 9 | 1 |
| La Mesa | 8 | 3 |
| Wooded Area | 6 | 3 |
| La Jolla Shores | 3 | 1 |
| South Park | 3 | 1 |
| Middletown | 2 | 1 |
| Roseville-Fleet Ridge | 2 | 2 |
| Alpine | 1 | 1 |
| Golden Hill | 1 | 1 |
| Hillborough | 1 | 1 |
| La Jolla Alta | 1 | 1 |
| La Jolla Mesa | 1 | 1 |
| Laguna Niguel | 1 | 1 |
| Midway District | 1 | 1 |
| Otay Ranch | 1 | 1 |
| Point Loma | 1 | 1 |
| Roseville-Fleetridge | 1 | 1 |

Location of Complaints



Data Disclaimer: We do our best to ensure that the data we release is complete, accurate and useful. However, because we do not create the data, and because the processing required to make the data useful is complex, we are not liable for omissions, inaccuracies or changes in the data.