

SAN ORG



San Diego International Airport

ITEM G



CALIFORNIA LEAST TERN

Endangered Species Protection Program
at San Diego International Airport

JULY 7, 2011

Paul Manasjan, Director – Environmental Affairs
San Diego County Regional Airport Authority

HABITAT PROTECTION

Endangered Species: California Least Tern

Listed under both Federal and California State Endangered Species Act since 1972

Greatest impacts on population caused by habitat loss due to increase in urbanization



CALIFORNIA LEAST TERN*

Characteristics and Appearance



Migratory seabird, smallest of terns

Range: San Francisco Bay to Baja CA

Adult average 1.6 oz, 1 ft wingspan

Black cap, white forehead & under parts

Gray wings & tail; orange bill, legs & feet

**Sternula antillarum browni*

LEAST TERN FEEDING



Least terns feed on more than 50 different species of fish

Most common prey fish in San Diego Bay is topsmelt



NESTING (APRIL – SEPTEMBER)

Both males & females share nesting responsibilities

Eggs are incubated for approximately 23 days

Eggs 1.2 inches long & speckled to camouflage with surroundings



AUTHORITY'S LEAST TERN COLONIES

Monitoring & maintenance responsibilities at 2 nesting sites:

1

San Diego Int'l Airport (SAN)

2

Chula Vista Wildlife Reserve



CHULA VISTA LEAST TERN COLONY

Chula Vista Wildlife Reserve
Least Tern Nesting Sites & Grid



SAN'S LEAST TERN NESTING OVALS



Busiest single runway in U.S.
next to most productive
colony In San Diego Bay

HABITAT SITE PREPARATION

Chick barrier fence



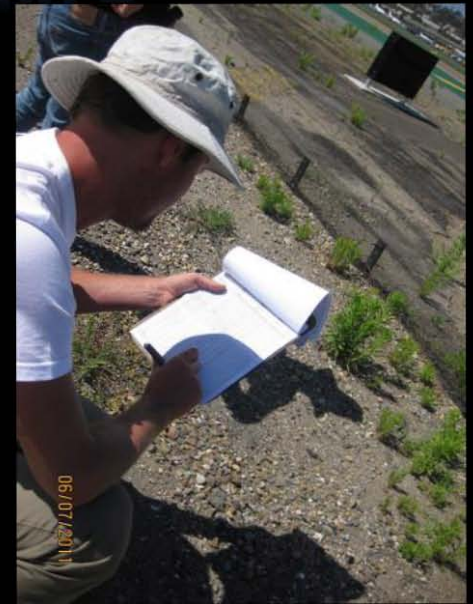
Least tern decoys



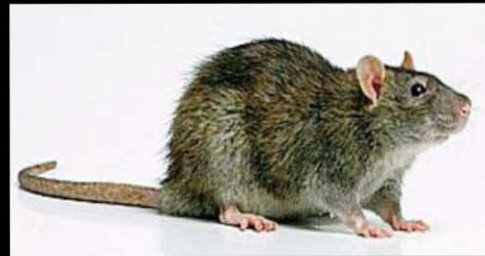
Ceramic tile shelter

Chula Vista Reserve

LEAST TERN MONITORING



PREDATOR CONTROL



DATA COLLECTION



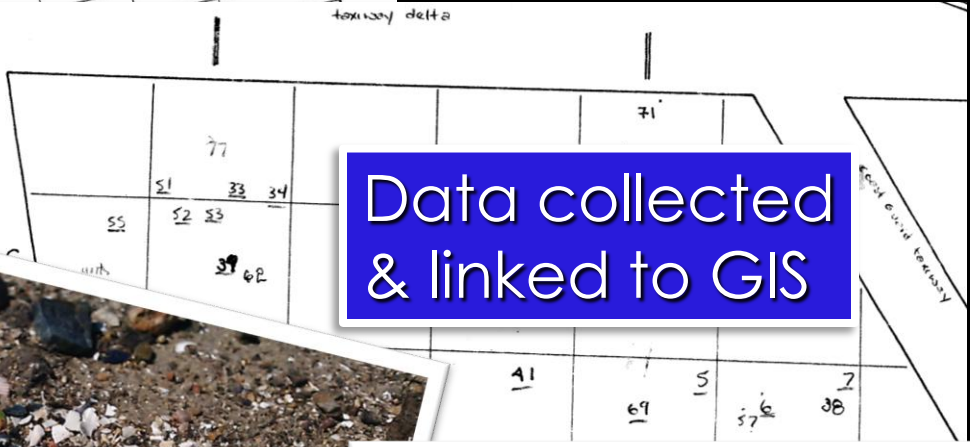
Weighing,
Measuring,
Tagging



MAPPING NEST & HATCHING LOCATIONS

MASTER NEST LIST 2004

Location	Grid Nest Number	Date	No. of Eggs	Expected Hatch	Actual Hatch	Expected Fledge	Other Outcome	Date	Band No.
1	5/6 C	5/14	1-2	5/18	2-6/8				
✓ 2	1A	5/14 (5/11)	2	5/18	1-6/1 1-6/3				
✓ 3	4B	5/14	2	5/18	1-11/14 6/8				
✓ 4	4A	5/18	2	5/18	2-6/8				
5	5B	5/18	2	5/18	2-6/8				
6	6B	5/18	1	5/18	1-6/8				
7	6C	5/18	1	5/18					
8	6C	5/18	1	5/18					
9	5D	5/18	1	5/18					
✓ 10	1B	5/18	1	5/18					
11	4A	5/18	1	5/18					
12	4A	5/18	1	5/18					
13	5B 4B	5/18	1	5/18					
14	5C	5/18	1	5/18					
✓ 15	1A	5/18	1	5/18					
✓ 16	1B	5/18	1	5/18					
✓ 17	1B	5/18	1	5/18					
✓ 18	1B	5/18	1	5/18					
✓ 19	1B	5/18	1	5/18					
✓ 20	1B	5/18	1	5/18					
21									
22									
23									
24	6C 5D	5/18	1	5/18					
25	5D 5A	5/18	1	5/18					
26	5A 5A	5/18	1	5/18					
27	3A 4B	5/18	1	5/18					
28	1A	5/18	1	5/18	1-2 5/1				
✓ 29	1A	5/18	1	5/18					1-11/14 6/15
✓ 30	1A	5/18	1	5/18	1-2 3/7				1-11/14 6/15
✓ 31	1C	5/18	1	5/18					1-11/14 6/15
✓ 32	2B	5/18	1	5/18					
✓ 33	2D	5/18	1	5/18					

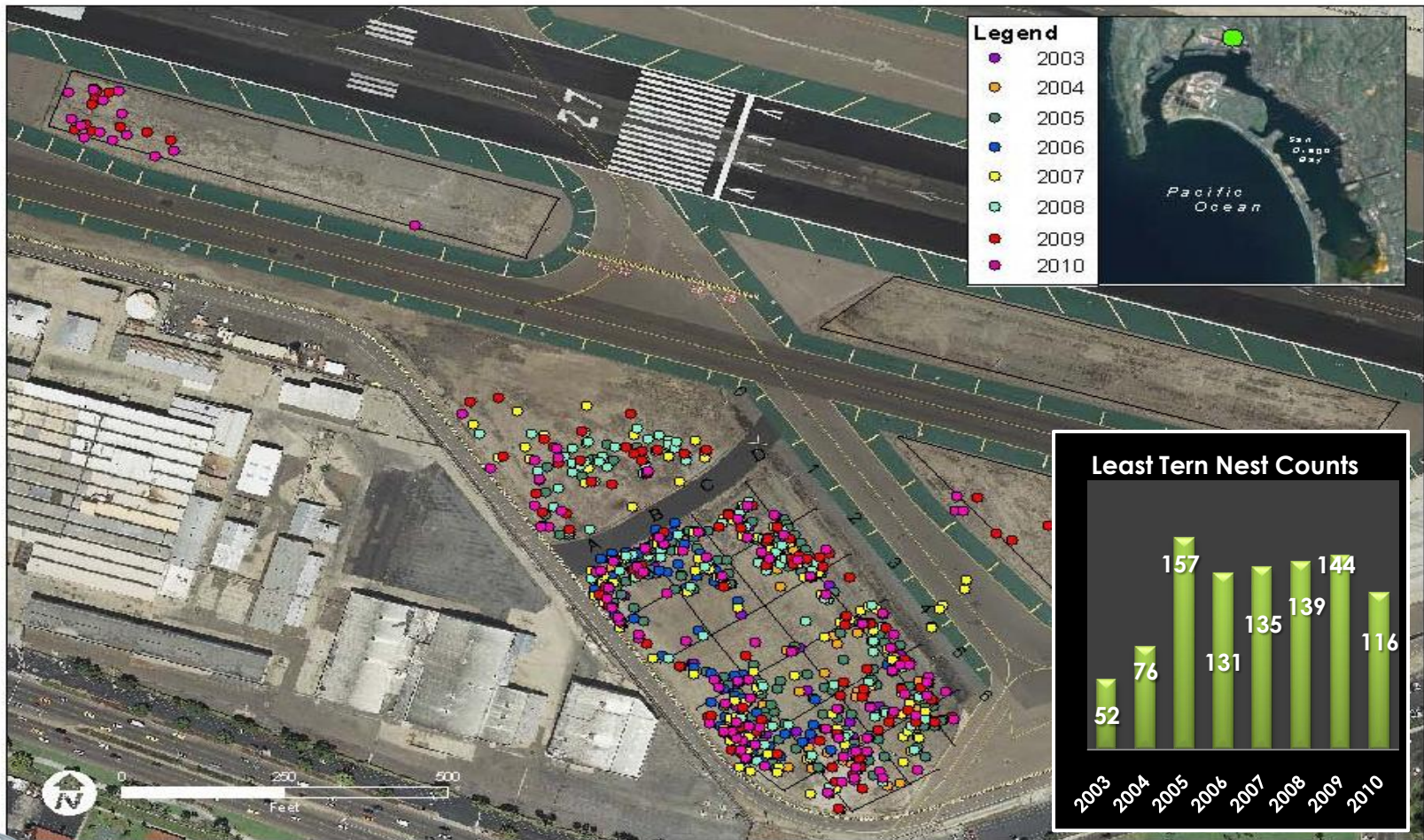


Data collected & linked to GIS



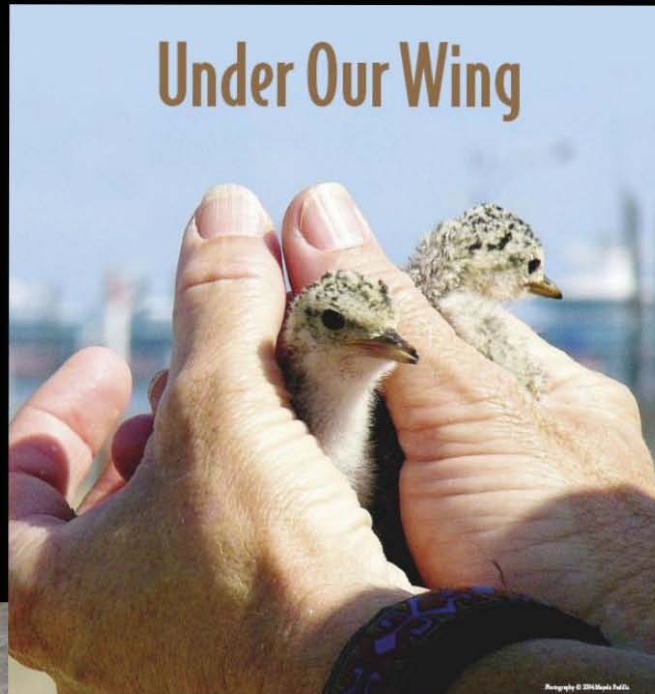
SAN ANNUAL NEST COUNTS

Least Tern Nests: San Diego International Airport 2003-2010



Nest Counts	52	76	157	131	135	139	144	116
Year	2003	2004	2005	2006	2007	2008	2009	2010

EDUCATION & OUTREACH



Under Our Wing



The San Diego County Regional Airport Authority works closely with the Zoological Society of San Diego to provide a protected habitat for the least tern, protected under both the Federal and California State Endangered Species Acts. Nest numbers at the airport have increased since the late 1990s, and the airport's nesting site is considered one of the most productive in Southern California. Visit us online at san.org

Photography © 2011 Michael Parks

© 2011 San Diego County Regional Airport Authority. All rights reserved.



09/10/2011

EDUCATION & PUBLIC OUTREACH

San Diego International Airport
LEAST TERN NEST COUNTER
 As of Monday, June 6, 2011

Total for last week: **69**

Week prior: **53**



San Diego International Airport
 PORT OF AIRPORTS

MOBILE SITE | E-NEWSROOM | CAREERS | BLOG | SITE MAP | CONTACT US

SEARCH SITE [] GO


SOCIAL CAN: [Facebook] [Twitter] [LinkedIn] [YouTube]

AT THE AIRPORT | PASSENGER SERVICES | AIRPORT AUTHORITY | AIRPORT PROJECTS | BUSINESS OPPORTUNITIES

NATURAL RESOURCES



The California Least Tern



at San Diego International Airport

SAN DIEGO INTERNATIONAL AIRPORT

LAVERNE,
 the Runway
 Stowaway

by Judy McSweeney Illustrated by Sharon




ENVIRONMENTAL PROTECTION

- Stormwater Management
- Natural Resources
- Asbestos/Lead Reports
- Landfill Remediation

Home » Airport Projects » Environmental » Environmental Protection » Natural Resources

The Airport Authority works diligently to protect the natural resources on and around the airport facilities and in the surrounding community. The Airport Authority is proud to provide a protected habitat for the endangered California least tern, a migrating seabird that finds nesting opportunities along the southeastern property line of the airport. The Airport Authority also seeks to prevent, eliminate, and minimize the impacts of stormwater runoff on soil grass beds that grow in San Diego Bay near the storm drain outlets.

The San Diego International Airport is home to the California least tern (*Sterna antillarum brownii*, "CLT"), a federally listed endangered seabird species. The airport provides the CLT with nesting habitat and easy access to foraging opportunities in nearby San Diego Bay. There are several other nesting areas around San Diego Bay, and the Airport Authority works cooperatively with the US Fish & Wildlife Service, the Port of San Diego, the US Navy to protect the CLT and its habitat.

The Airport Authority continues to work with the Port of San Diego and the San Diego Zoological Society's Center for Reproduction of Endangered Species (CRES) to monitor the CLT on the Airport Authority's properties. [Click here](#) for more information.

The California Least Tern



2009 Least Tern Brochure

Mouse over thumbnail to the right to see corresponding image



At the airport, California Least Terns (CLT) create their nests on sand and gravel. Their eggs are 1.2 inches long on average and are speckled to easily camouflage with their surrounding habitat.



VIDEO ON SAN WEBSITE



QUESTIONS

