

Revised 2/12/13



SAN DIEGO COUNTY
REGIONAL AIRPORT AUTHORITY
STAFF REPORT

Item No.
11

Meeting Date: **FEBRUARY 14, 2013**

Subject:

Award and Authorize the President/CEO to execute a contract with Miki Iwasaki DBA MI-Workshop to Design Integrated Artwork for San Diego International Airport

Recommendation:

The Art Advisory Committee recommends that the Board adopt Resolution No. 2013-0015, awarding Miki Iwasaki DBA MI-Workshop the commission for the Terminal 1 Food Court Public Art Opportunity in an amount not to exceed \$110,000.

Background/Justification:

Airport Authority Policy 8.50 provides that 2% of construction costs of eligible projects be allocated for public art.

On July 6, 2006, the Authority Board, by Resolution 2006-0085, approved Phase I of the Airport Art Master Plan apportioning 2% of all construction costs of eligible projects. Eligible projects include terminals, landside and other specified construction. A separate Airport Art Program Fund has been established to pool funds allocated from all eligible projects.

The requested project is an opportunity for an artist to create integrated artwork for a wall located in the Terminal 1 Food Court. In collaboration with the renovation of the Terminal 1 Food Court, the Airport Art Program has been presented with an opportunity to facilitate a new public art project. The public art opportunity consists of a free-standing structural wall measuring 23' x 10'6". The deliberate siting of the artwork in and around the Food Court is intended to provide an aesthetic enhancement for a wall located in a highly trafficked area in the center of the food court. The selected artist for this project will be expected to confer with the Food Court project design team during the implementation of the project.

000069

Solicitation Process:

On September 11, 2012, the Authority issued a Request for Qualifications for the Terminal 1 Food Court public art project. Notices of the opportunities were published in *The Daily Transcript* and on the Authority's website. Public Notices were sent to more than 700 potential respondents.

The Artist Selection Panel, established by the Authority's Art Advisory Committee, was comprised of art and design professionals residing in San Diego. A total of 44 submittals were received in response to RFP. The panel reviewed 29 responsive submissions and short-listed three artists. The three short-listed finalists were invited to submit site-specific proposals during an interview with the panel on January 16, 2013.

The panel considered the following criteria during the evaluation process:

1. Quality, creativity and strength proposals
2. Appropriateness and thoughtfulness of concept
3. Applicability of materials
4. Ability to communicate effectively
5. Detailed and feasible budget

The panelists' final rankings and scores are presented below:

Final Rankings

Firms	Panelist 1	Panelist 2	Panelist 3	Total	Final Rank
Iwasaki, Miki	1	2	2	5	1
Krivanek, BJ	3	3	1	7	3
Murdoch, Tim	2	1	3	6	2

Final Combined Scores

Combined Scores	Quality, creativity and strength of proposal	Appropriateness and thoughtfulness of concept	Applicability of materials	Ability to communicate effectively	Detailed and feasible budget	Total
Iwasaki, Miki	980	700	700	300	150	2830
Krivanek, BJ	910	675	600	290	150	2625
Murdoch, Tim	1015	675	675	270	145	2780

The Artist Selection Panel unanimously recommended that Miki Iwasaki DBA MI-Workshop be awarded an agreement to produce and install public art for the Terminal 1 Food Court public art project. The budget for this project is not to exceed \$110,000.

Miki Iwasaki DBA MI-Workshop is a San Diego-based individual artist who either fabricates or outsources fabrication of his original designs and artistic services. The Panel found his concept to have the best solution to this busy space. His creative and proficient knowledge of materials and technology was demonstrated in his ability to integrate an appropriate concept for the space while also presenting a simplified design that achieved effective visual interaction.

Fiscal Impact:

Funding for the above referenced public art opportunities were identified as part of the Capital Improvement Program and approved by the Board as part of overall CIP budget for FY 2013-2017.

Authority Strategies:

This item supports one or more of the Authority Strategies, as follows:

- Community Strategy Customer Strategy Employee Strategy Financial Strategy Operations Strategy

Environmental Review:

- A. This Board action is not a project that would have a significant effect on the environment as defined by the California Environmental Quality Act (CEQA), as amended. 14 Cal. Code Regs. §15378. This Board action is not a "project" subject to CEQA, Pub. Res. Code §21065.
- B. California Coastal Act Review: This Board action is not a "development" as defined by the California Coastal Act. Cal. Pub. Res. Code §30106.

Equal Opportunity Program:

The Authority's small business program promotes the utilization of small, local, disadvantaged, and other business enterprises, on all contracts, to provide equal opportunity for qualified firms. By providing education programs, making resources available, and communicating through effective outreach, the Authority strives for diversity in all contracting opportunities.

The Authority has a Disadvantaged Business Enterprise ("DBE") Plan as required by the Department of Transportation, 49 CFR Part 26. The DBE Plan calls for the Authority to submit an annual overall goal for DBE participation on all federally funded projects.

This project does not utilize federal funds; therefore, it will not be applied toward the Authority's over-all DBE goal.

Prepared by:

CONSTANCE Y. WHITE
MANAGER, ART PROGRAM

RESOLUTION NO. 2013-0015

A RESOLUTION OF THE BOARD OF THE SAN DIEGO COUNTY REGIONAL AIRPORT AUTHORITY AWARDING MIKI IWASAKI DBA MI-WORKSHOP THE COMMISSION FOR THE TERMINAL ONE FOOD COURT PUBLIC ART PROJECT IN AN AMOUNT NOT TO EXCEED \$110,000

WHEREAS, the Airport Art Master Plan calls for artwork to be site-specific and integrated into the Airport; and

WHEREAS, Authority Policy 8.50 provides that 2% of construction costs of eligible projects be allocated for public art, which includes terminals, landside and other specified construction; and

WHEREAS, on September 11, 2012, the Authority issued a Request for Qualifications for the Terminal 1 Food Court public art opportunity; and

WHEREAS, forty-four submissions were received and the artist selection panel, established by the Art Advisory Committee comprised of art and design professionals, reviewed twenty-nine responsive submissions; and

WHEREAS, three short-listed finalists were invited to submit site-specific proposals during interviews by the panel; and

WHEREAS; the selection panel for the Terminal 1 Food Court public art opportunity unanimously recommended that Miki Iwasaki DBA MI-Workshop be awarded an agreement to design, produce and install public art; and

WHEREAS; the Art Advisory Committee voted in favor of forwarding the Panel's recommendation;

NOW, THEREFORE, BE IT RESOLVED that the Board hereby awards Miki Iwasaki DBA MI-Workshop the commission for the Terminal 1 Food Court Public Art Project in an amount not to exceed \$110,000.

BE IT FURTHER RESOLVED that the Board finds this action is not a "project" as defined by the California Environmental Quality Act (CEQA), Cal. Pub. Res. Code 21065; nor is it a "development" as defined by the California Coastal Act, Cal. Pub. Res. Code 30106.

PASSED, ADOPTED AND APPROVED by the Board of the San Diego County Regional Airport Authority at a special meeting this 14th day of February, 2013 by the following vote:

AYES: BOARD MEMBERS:

NOES: BOARD MEMBERS:

ABSENT: BOARD MEMBERS:

ATTEST:

TONY R. RUSSELL
DIRECTOR, CORPORATE SERVICES/
AUTHORITY CLERK

APPROVED AS TO FORM:

BRETON K. LOBNER
GENERAL COUNSEL

ITEM 11

**AWARD AND AUTHORIZE THE
PRESIDENT/CEO TO EXECUTE A
CONTRACT WITH MIKI IWASAKI DBA
MI-WORKSHOP TO DESIGN
INTEGRATED ARTWORK FOR SAN
DIEGO INTERNATIONAL AIRPORT**

The attached information was provided at the February 1, 2013 Art Advisory Committee Meeting



SAN DIEGO COUNTY REGIONAL AIRPORT AUTHORITY

ITEM 2

Inter-Office Communication

Date: February 1, 2013

To: FILE

From: Evaluation Panel — Terminal 1 Food Court Public Art Project

Copy: Thella Bowens, President/CEO

Subject: Evaluation Memo for: Call for Artist, Phase III–RFQ
Terminal 1 Food Court Public Art Project

Background: The Authority issued the Request for Qualifications for the Terminal 1 Food Court on September 11, 2012. As usual, notice of the business opportunity was made in the *Daily Transcript*, and the Authority’s Website. Public Notices were sent to 700 potential Respondents. A pre-submittal meeting was held on September 18, 2012 and attended by 5 artists. The Authority received 44 submissions on September 21, 2012 of which 29 were considered to be responsive.

The Evaluation Panel consisted of three design professionals residing in San Diego. The three highest scoring artists were invited to interview on January 16, 2013. The Artists were asked to present a conceptual design proposal consisting of the following: conceptual narrative, three-dimensional model or two dimensional scaled designs, material samples, budget and a timeline for their proposal. Additionally, each artist was asked to respond to a specific list of questions, prepared by the Panel, which targeted the evaluation criteria presented in the RFQ. A summary of the Panelist’s findings and final recommendation are presented below:

Combined Scores	Quality, Creativity and strength of proposal	Appropriateness and thoughtfulness of concept	Applicability of materials	Ability to Communicate Effectively	Detailed and feasible budget	Total
Iwasaka, Miki	980	700	700	300	150	2830
Krivanek, BJ	910	675	600	290	150	2625
Murdoch, Tim	1015	675	675	270	145	2780

Description of the Short-listed Candidates:

- 1) Miki Iwasaki DBA MI-Workshop – is a San Diego-based individual artist who either



ITEM 2

fabricates or out-sources fabrication of his original designs and artistic services. The Panel found his concept to have the best solution to this busy space. His creative and proficient knowledge of materials and technology was demonstrated in his ability to design an appropriate solution for the space while also presenting a simplified and soothing design that achieved effective visual interaction. He is the highest ranking artist.

- 2) **Krivanek+Breaux** – BJ Krivanek is an educator, artist and Principal of Krivanek+Breaux/Art+Design. His background, along with experience in architecture, informs his unique capability to create and implement comprehensive public art projects in the urban environment. After having interviewed this artist, the panel resolved that the proposal and proposed materials were not appropriate for the site and were generally concerned with the long term durability. BJ Krivanek was the lowest ranking artist.
- 3) **Tim Murdoch** – is an artist living in San Diego. Originally from Boston, Massachusetts, Murdoch's work ranges from large interactive public installations to smaller gallery objects. His process includes utilizing formal properties as well as the history of the site. The Panel found his proposal beautiful, intriguing and engaging. After much discussion after interviewing this artist, the panel resolved that his proposal was slightly lacking in aesthetic originality. Tim Murdoch was the second highest ranking artist.

Recommendation: Approval of the Panel's recommendation to award this commission to Miki Iwasaki DBA MI-Workshop for the Terminal 1 Food Court Public Art Project.



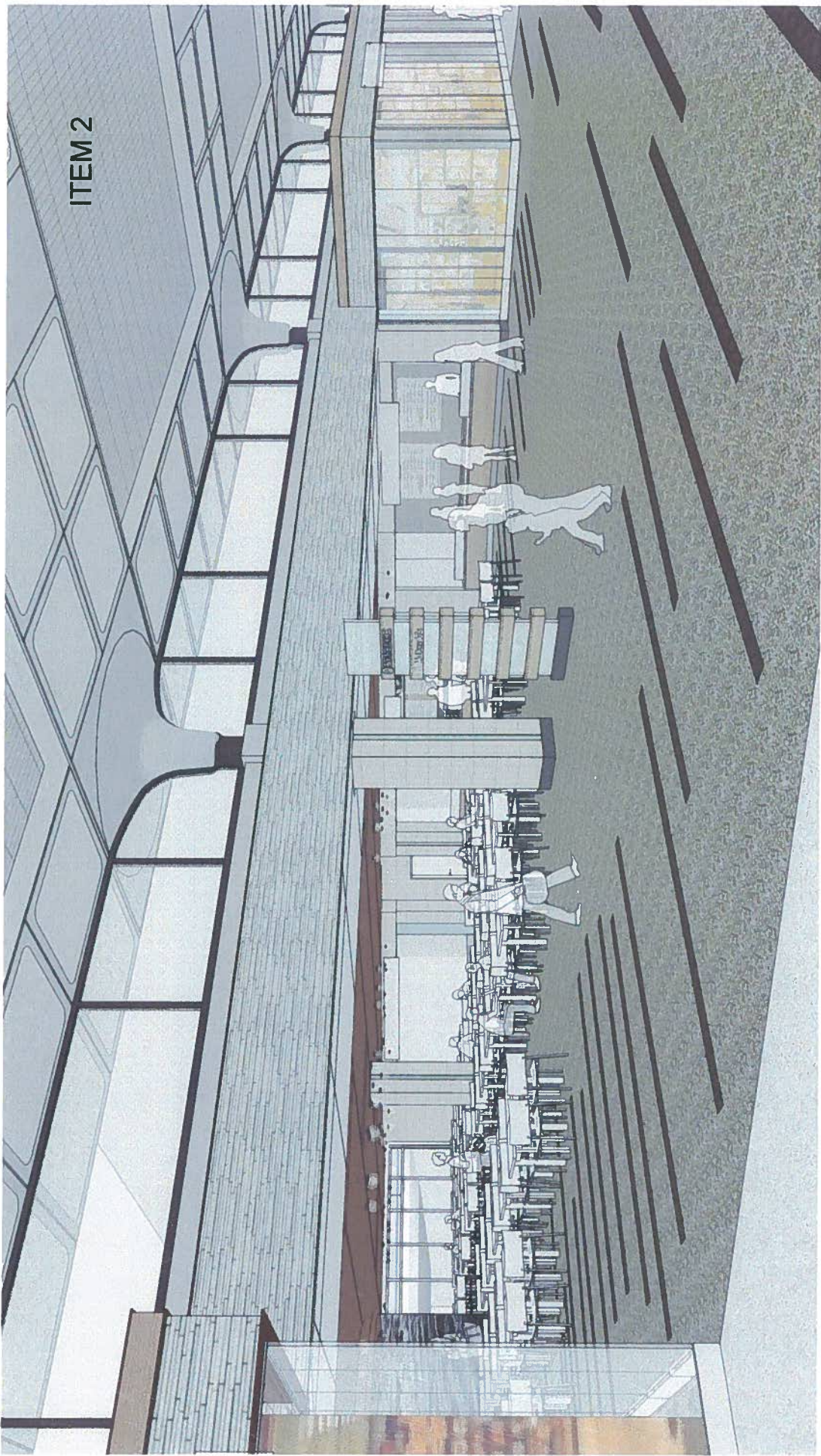
Terminal 1 Food Court Public Art Project Description

Project Description:

Estimated Budget: \$110,000

This project is an opportunity for an artist to create a tactile, physically and visually engaging artwork within the Terminal 1 Food Court. The work should be humorous and/or narrative and provide a maximum impact with a minimal approach. Artists working in ceramic, relief and glass are encouraged to apply, although artists working in any media are eligible. The artwork is intended to provide an aesthetic enhancement for a free-standing structural wall measuring 23' x 10'6". The wall is located in a highly trafficked area in the center of the food court. The artist selected for this project will be expected to confer with FDD's design team during the implementation of the project.



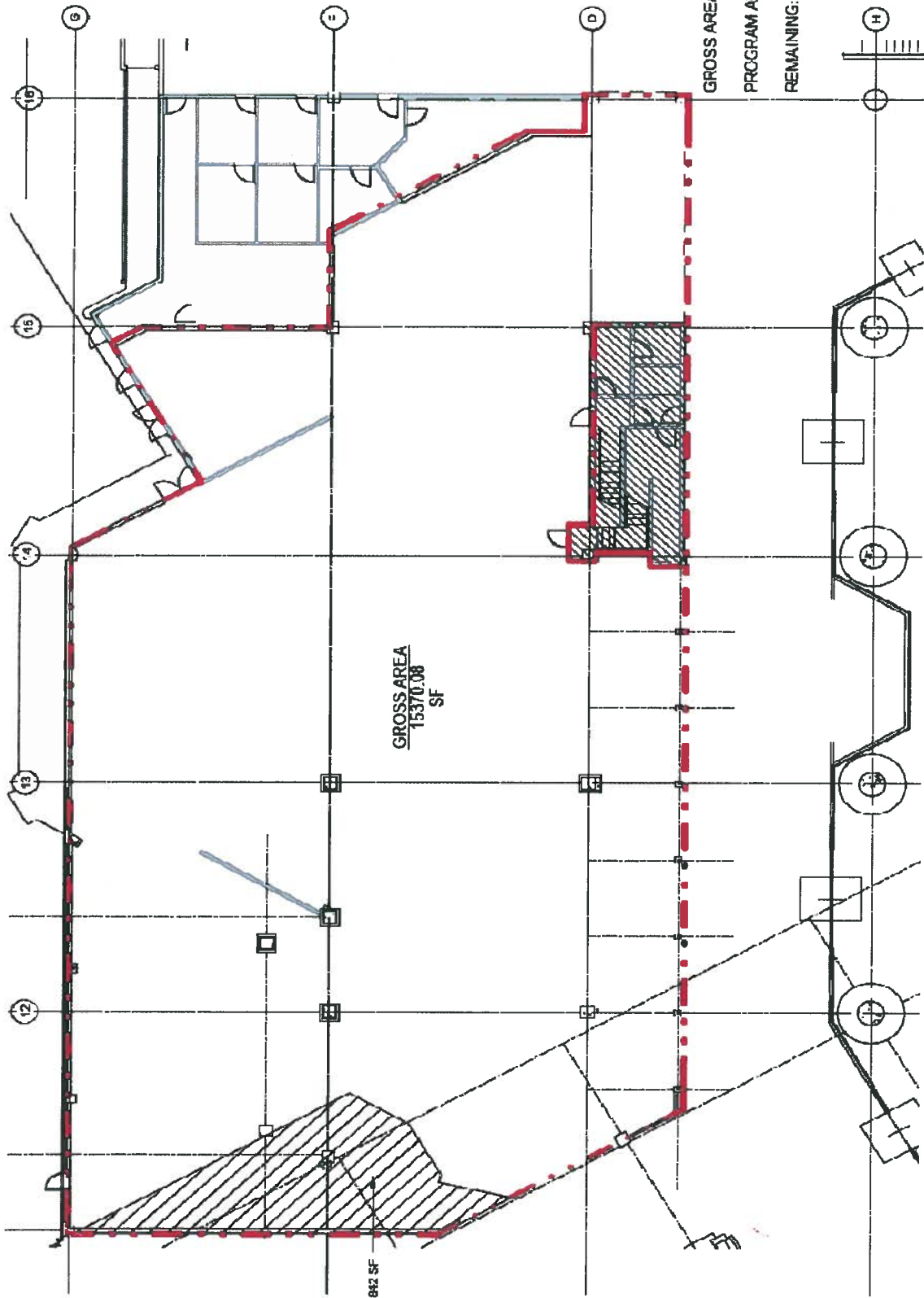


ITEM 2

CONCESSIONS SUPPORT INFRASTRUCTURE PROJECT

SHOHREH BELADI

(Last updated 9-28-12)

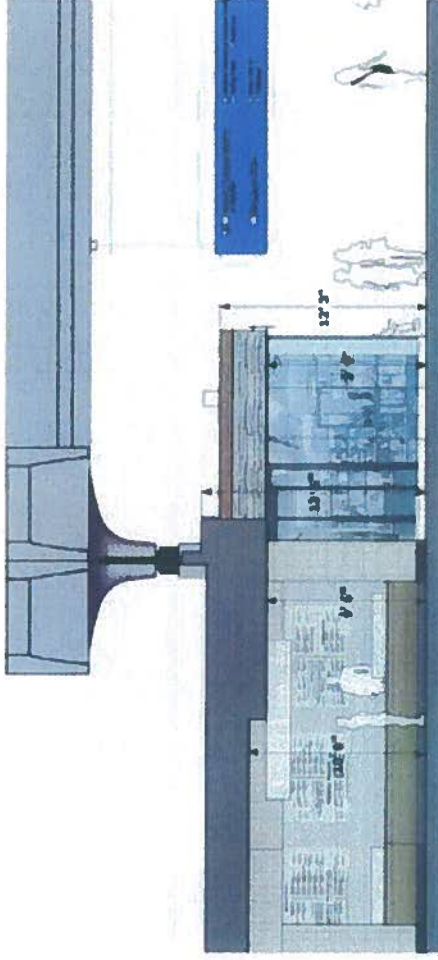


EXTENT OF WORK

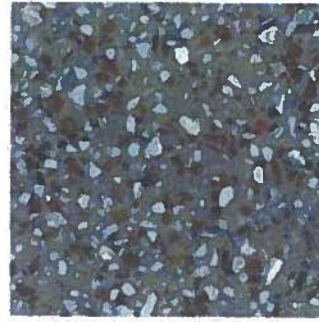
SCALE: 1/8" = 1'-0"



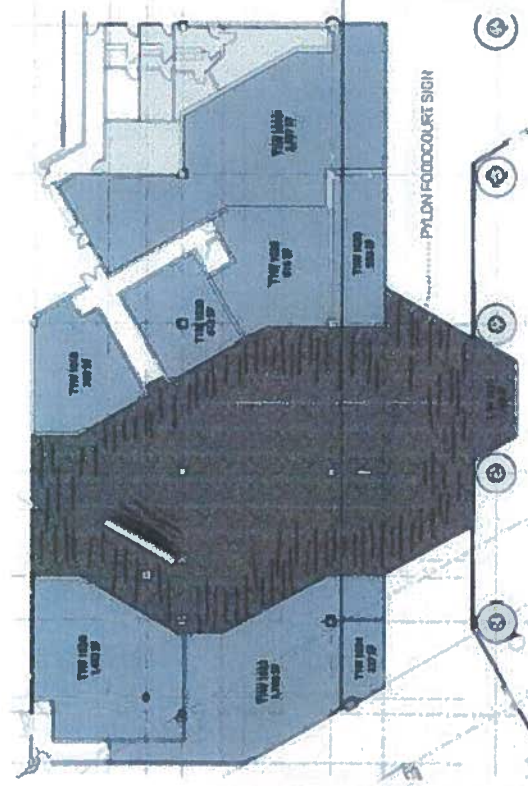
VIEW FROM TICKETING



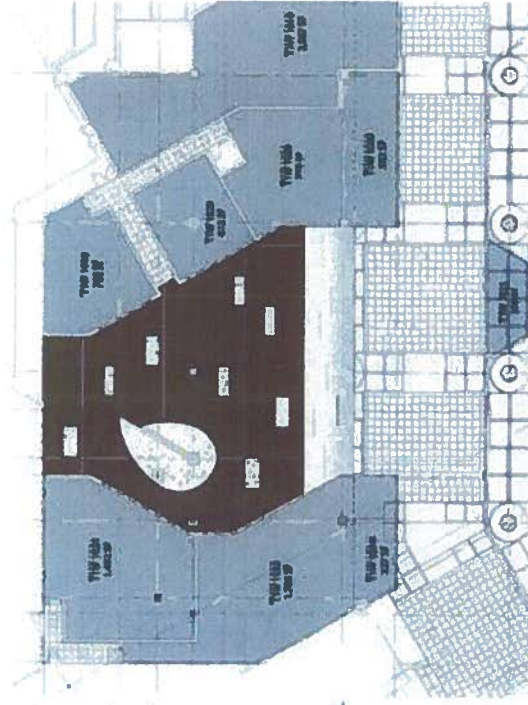
SECTION CUT AT FOOD COURT ENTRY



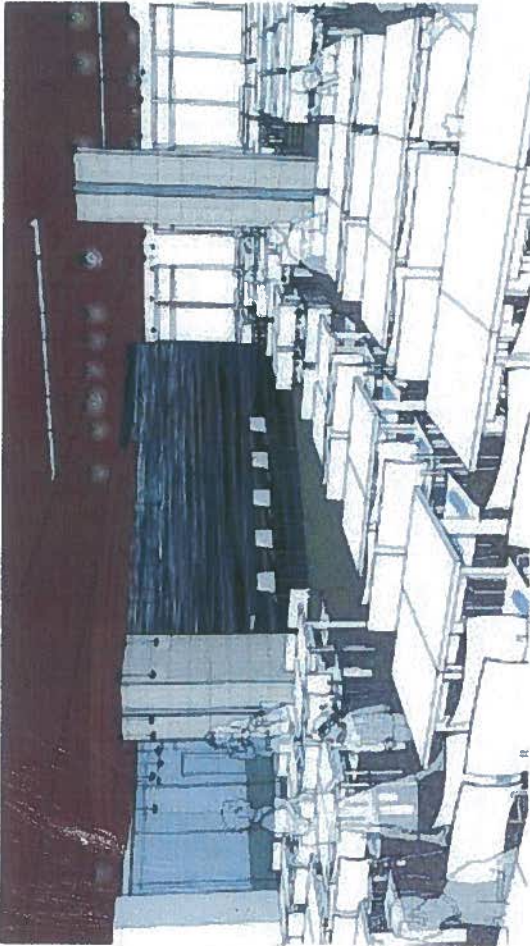
PROPOSED TERRAZZO



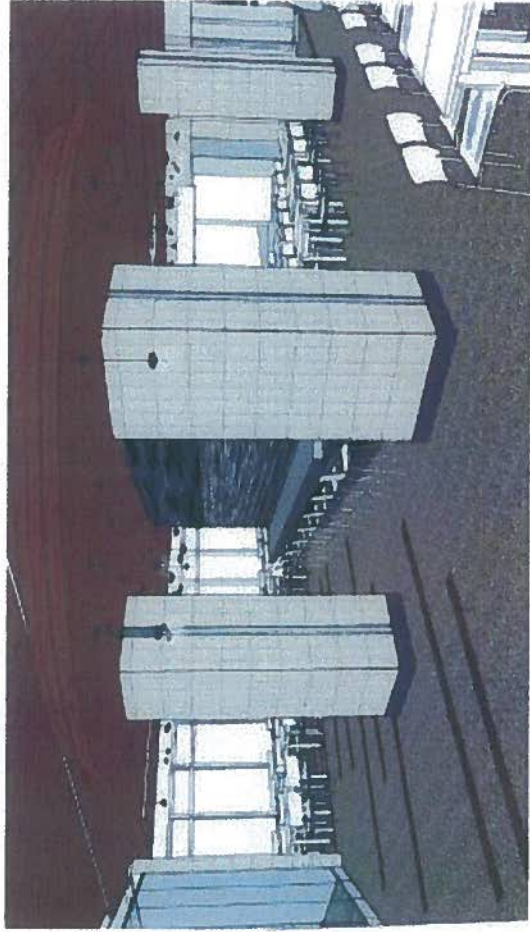
FINISH FLOOR PLAN



REFLECTED CEILING PLAN



FRONT VIEW



REAR VIEW



**TERMINAL 1 FOOD COURT PUBLIC ART OPPORTUNITY
SHORTLISTED ARTISTS**

Miki Iwasaki

1701 National Avenue
San Diego, CA 92113
619.203.5681
miki@mi-workshop.com

BJ Krivanek

5322 N. Spaulding Avenue
Chicago, IL 60625
733.398.7814
bjkrivanek@aol.com

Tim Murdoch

2724 C. St
San Diego, CA 92102
617.542.8322
tim@timmurdoch.com



TERMINAL 1 FOOD COURT ARTIST SELECTION PANEL

VOTING PANEL

Marisol Rendon
1494 Shipley Ct.,
San Diego, CA 92114
P: 619.463.4103
Cell: 909.2409452
Marisolrendon@mac.com

Randy S. Robbins
Principal architect,
AVRP
703 16th St, San Diego, CA 92101
619-704-2700
C: 619.417.8788
rrobbins@AVRPSTUDIOS.COM

William Leslie
Artist
P: 760-724-0319
wmlieslie77@cox.net

ADVISORY LIAISON

Indra Gardiner Bowers
Art Committee Liaison
Founder/ Chief Influence Officer
i.d.e.a.
444 West Beech Street, Suite 400
San Diego, CA 92101
619-295-8232 ext 114
indragb@theideabrand.com

AIRPORT AUTHORITY STAFF

Alan Parker
Senior Purchasing Analyst, Procurement
619.400.2544
aparker@san.org

Constance Y. White
Art Program Manager
619.400.2891
cywhite@san.org

Melissa Huapaya
Art Program Coordinator
619.400.2882
mhuapaya@san.org

ASTRALGRAPH

Astralgraph

Astral –

1. pertaining to, or proceeding from the stars; stellar; star-shaped.
2. pertaining to, consisting of, or resembling an aster; having a discoid, radiate flower head.
3. noting a supersensible substance pervading all space and forming the substance of a second body (astral body) belonging to each individual. It accompanies the individual through life, is able to leave the human body at will, and survives the individual after death.

Graph –

noun

1. a diagram representing a system of connections or interrelations among two or more things by a number of distinctive dots, lines, bars, etc.
2. a. a series of points, discrete or continuous, as in forming a curve or surface, each of which represents a value of a given function.
b. also called linear graph. a network of lines connecting points.
3. a written symbol for an idea, a sound, or a linguistic expression.

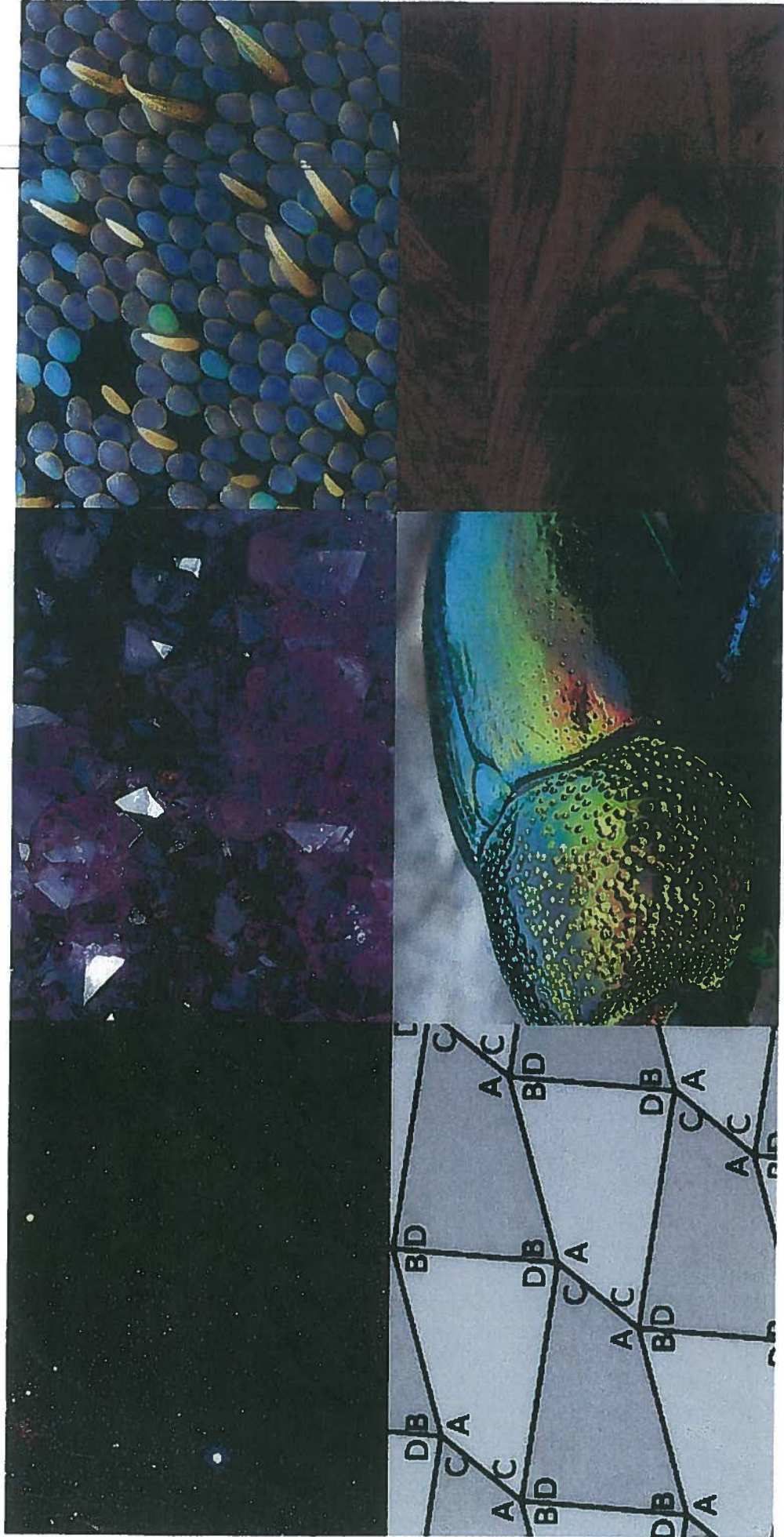
verb

4. Mathematics. to draw (a curve) as representing a given function.
5. to represent by means of a graph.

Astralgraph was inspired by many sources including the local geography, cartography and navigation, sensory perception, and geometric ordering principles. The inspirational elements are all associated with the concept of travel and connected to the context of an airport. The composition of the piece will be created by individually crafted tiles with faceted geometries that will include materials, textures, reflections, and illuminations that shift internally and change in ambient light conditions. The intention is to create a piece that is instantly visually engaging but as you study the geometry, patterns, and materials, the hope is that one will reflect on larger systems and forces at play. Through the exploration of material effects, production methods, and abstract geometry, the project led to using a combination of digital modeling and CNC technology as well as hand crafted materials and production.

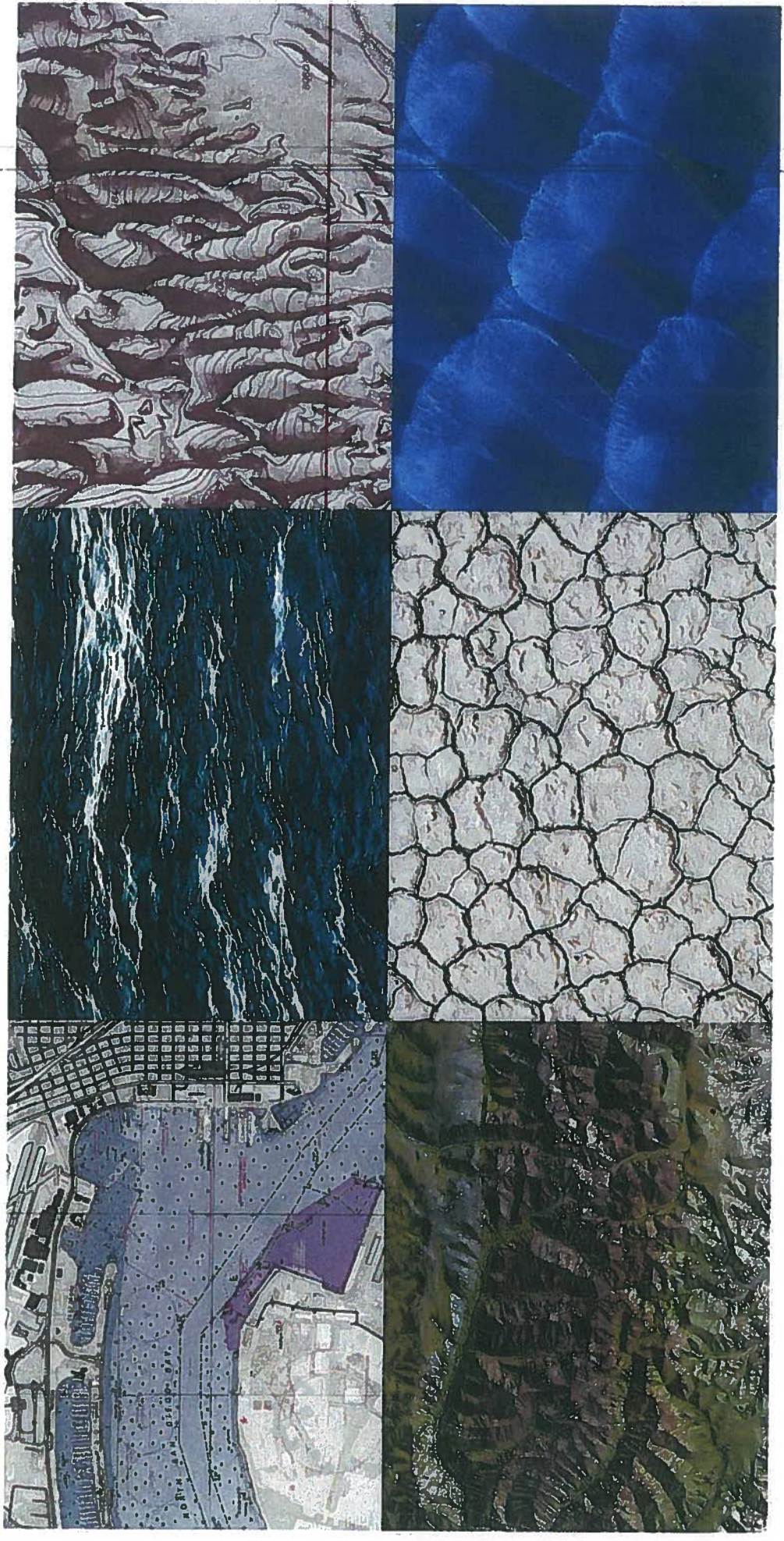
This balance was aligned with the ideas behind the piece and we hope will allow for an experience that engages the visitor on multiple levels. The physical materials for the project will be a combination of mainly wood, metal, and acrylic with the use of lighting and controls. Being that the surface designated for the artwork is in an area that is densely filled with public functions and the fact that the artwork will be at floor level with travelers, we had to approach this project as one which can be tactile and visually engaging from a range of perceptible distances but also durable and practical. By constructing the piece from standard architectural materials, maintenance would be minimal and repairs, if required, would be efficient.

ITEM 2



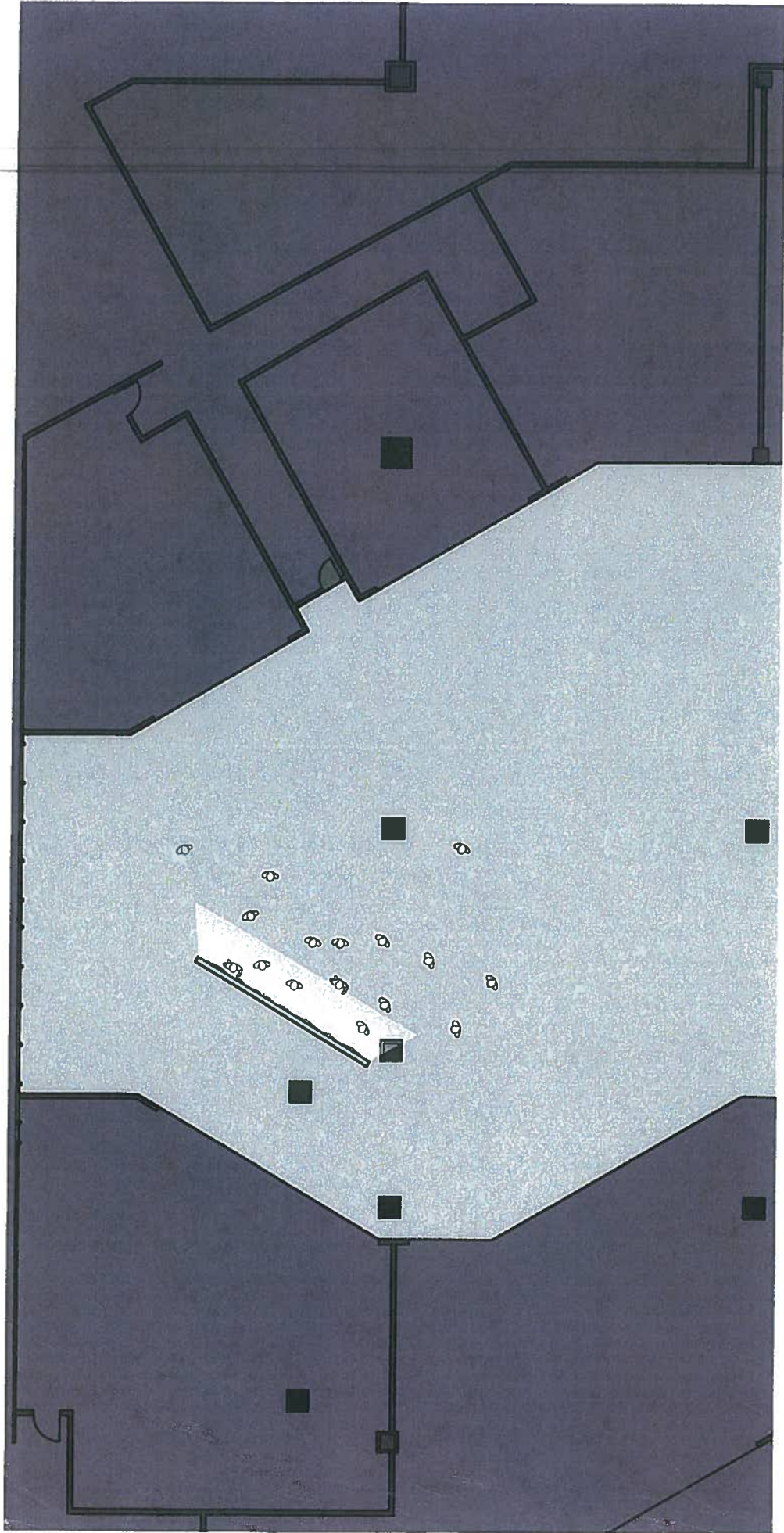
"ASTRALGRAPH" by MIKI Iwasaki
Concept Presentation January 16, 2013

ITEM 2



"ASTRALGRAPH" by MIKI Iwasaki
Concept Presentation January 16, 2013

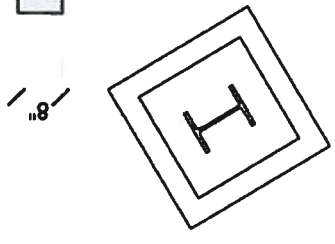
ITEM 2



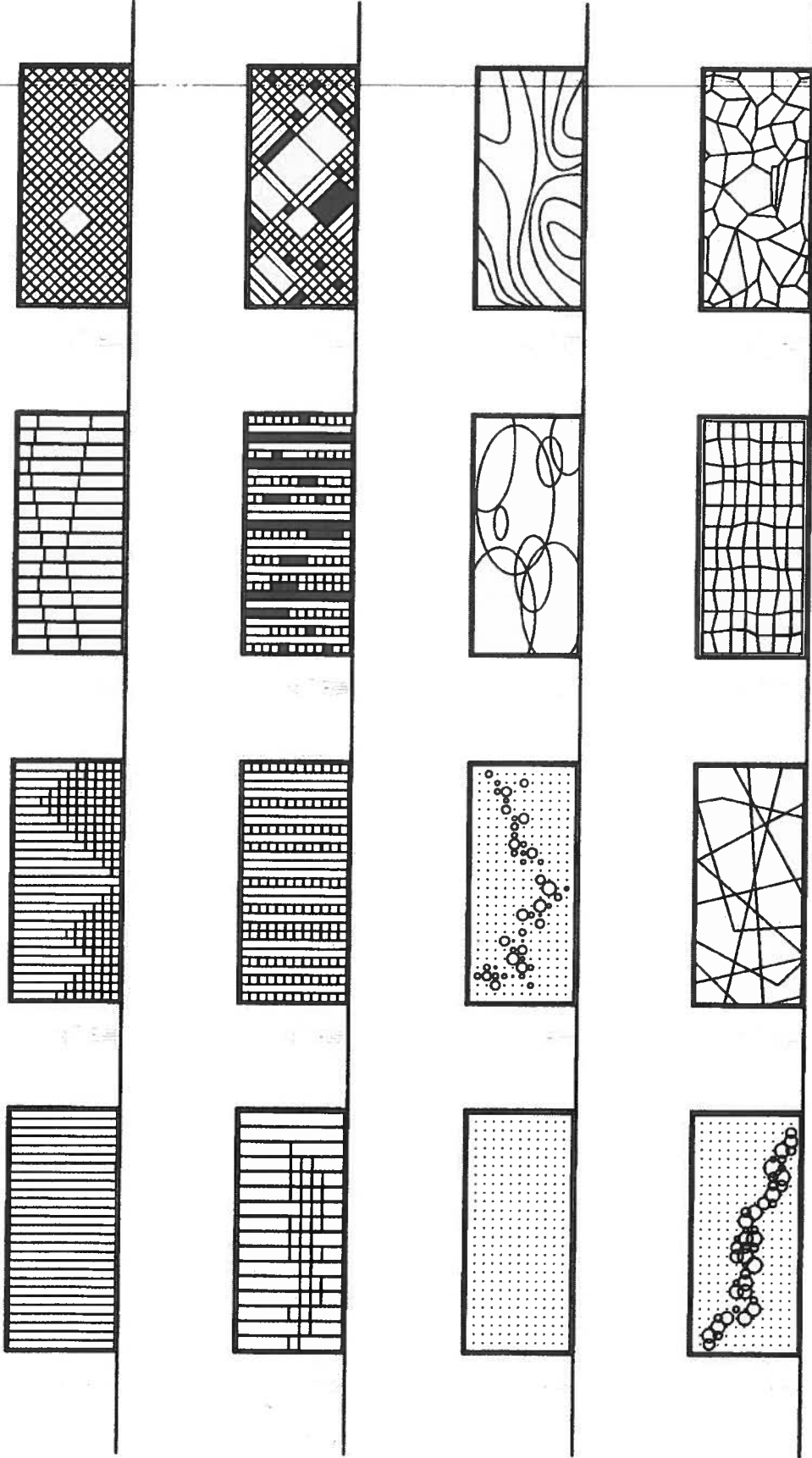
"ASTRALGRAPH" by MIKI Iwasaki
Concept Presentation January 16, 2013

ITEM 2

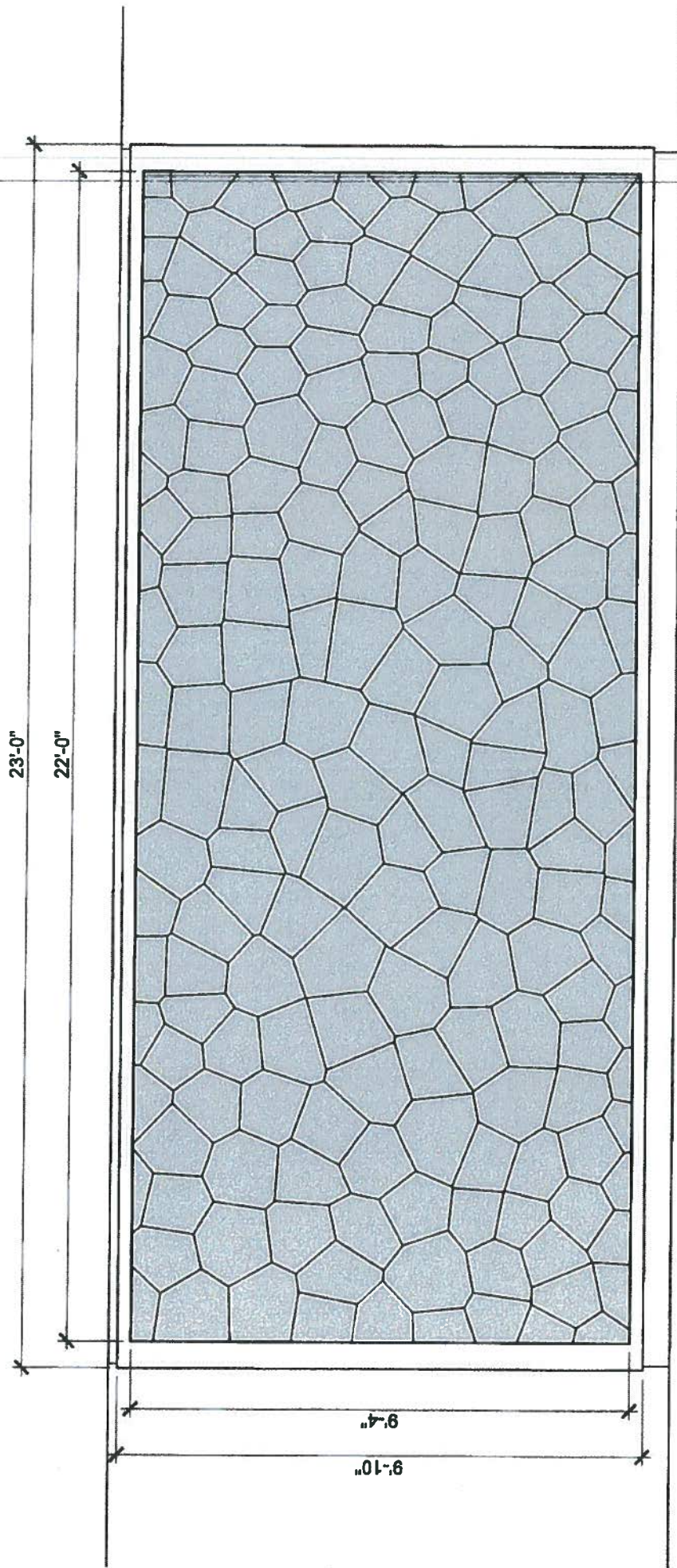
23'-0"



ITEM 2

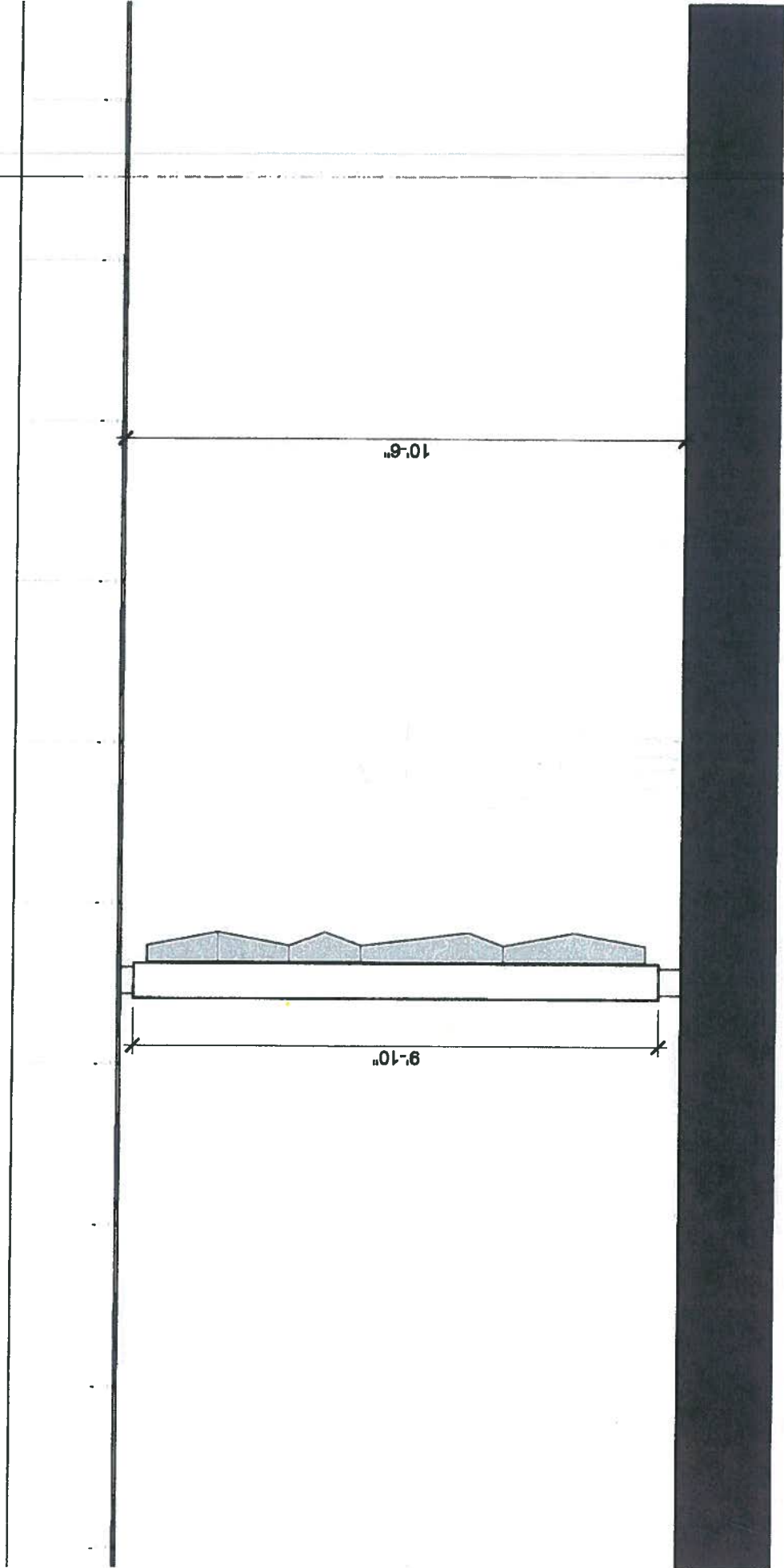


ITEM 2

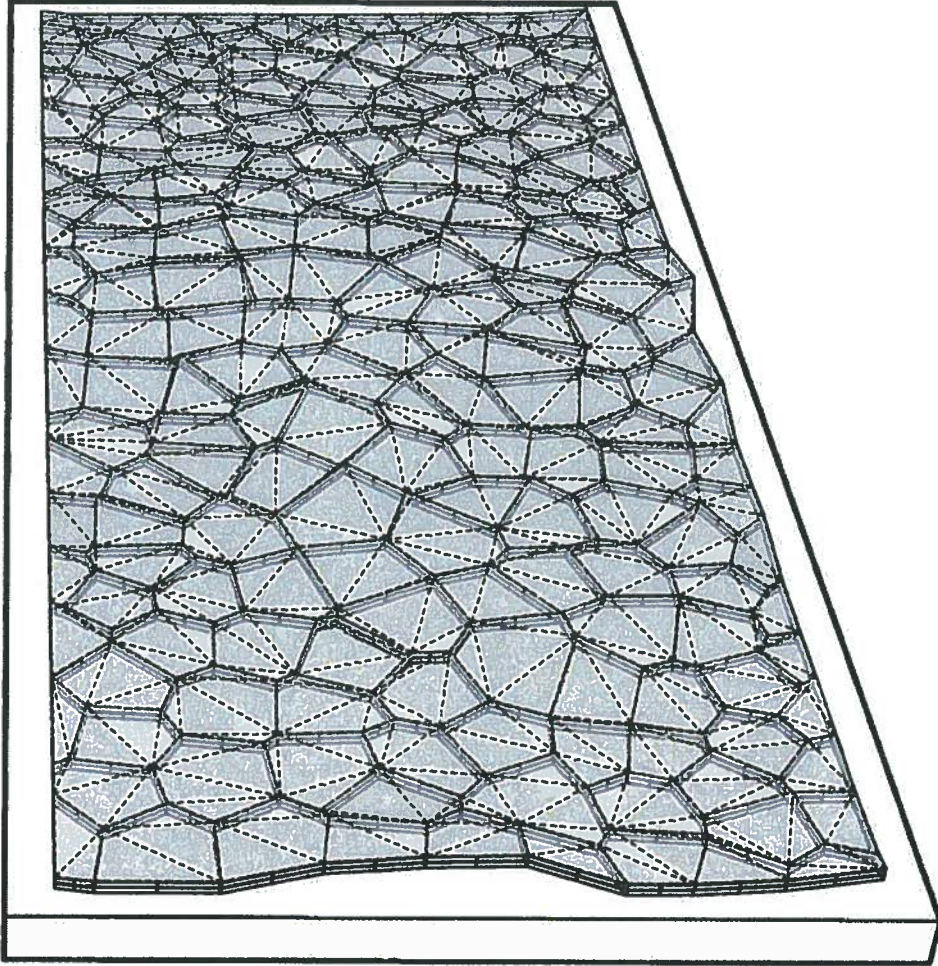


"ASTRALGRAPH" by Miki Iwasaki
Concept Presentation January 16, 2013

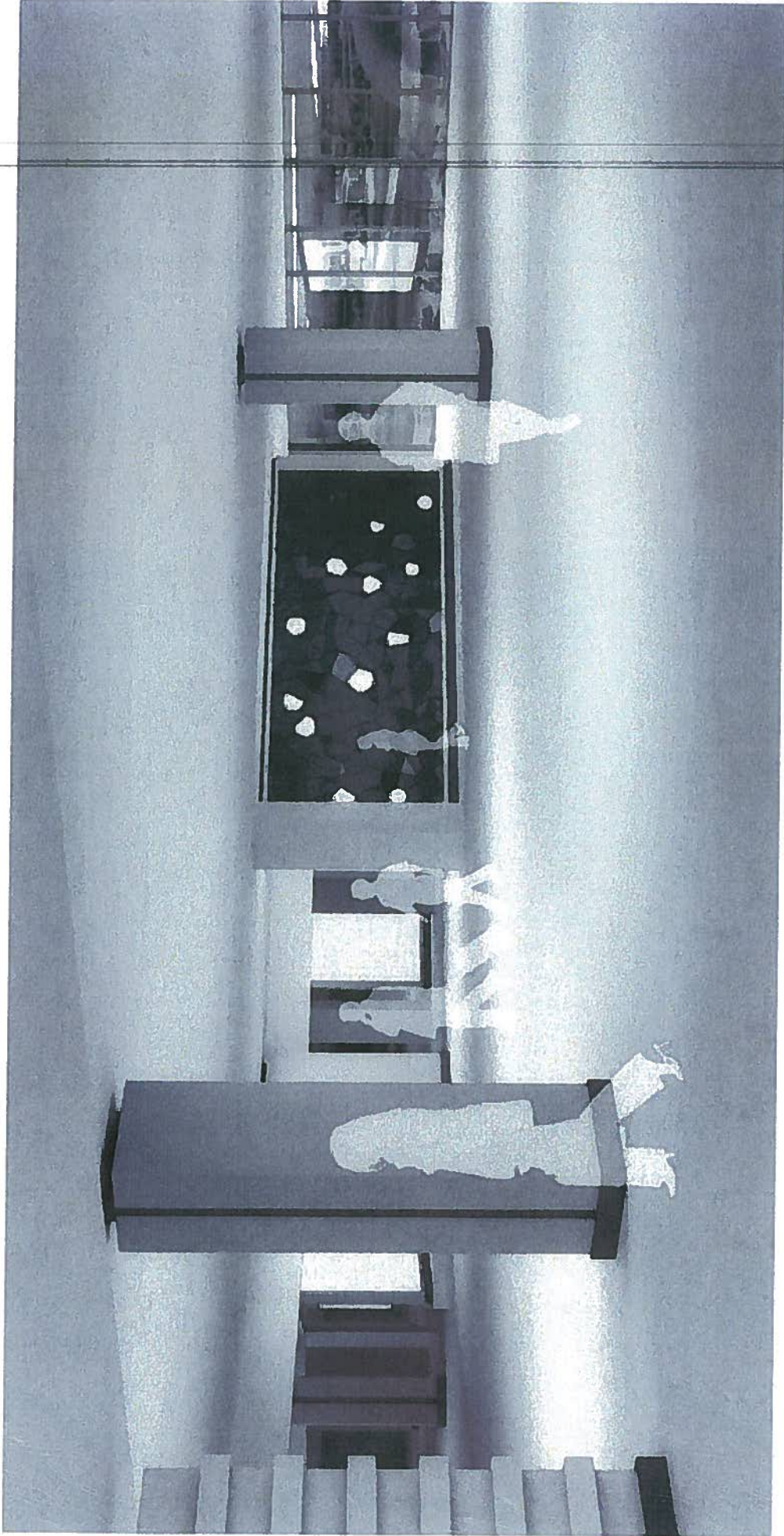
ITEM 2



"ASTRALGRAPH" by Miki Iwasaki
Concept Presentation January 16, 2013

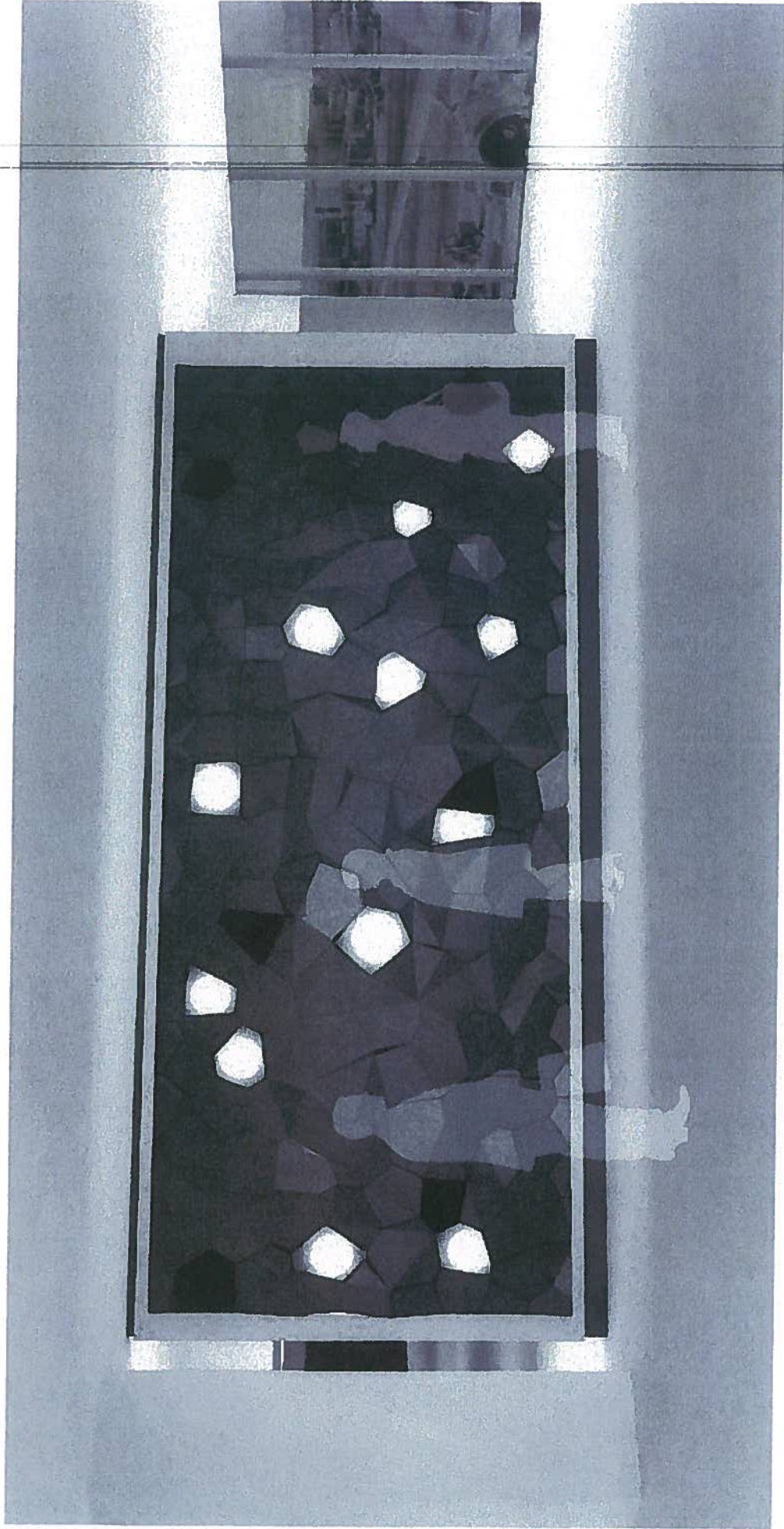


ITEM 2



"ASTRALGRAPH" by MIKI Iwaseki
Concept Presentation January 16, 2013

ITEM 2



"ASTRALGRAPH" by Miki Iwasaki
Concept Presentation January 16, 2013

ITEM 2



"ASTRALGRAPH" by Miki Iwasaki
Concept Presentation January 16, 2013

ITEM 2



"ASTRALGRAPH" by MIKI Iwasaki
Concept Presentation January 16, 2013

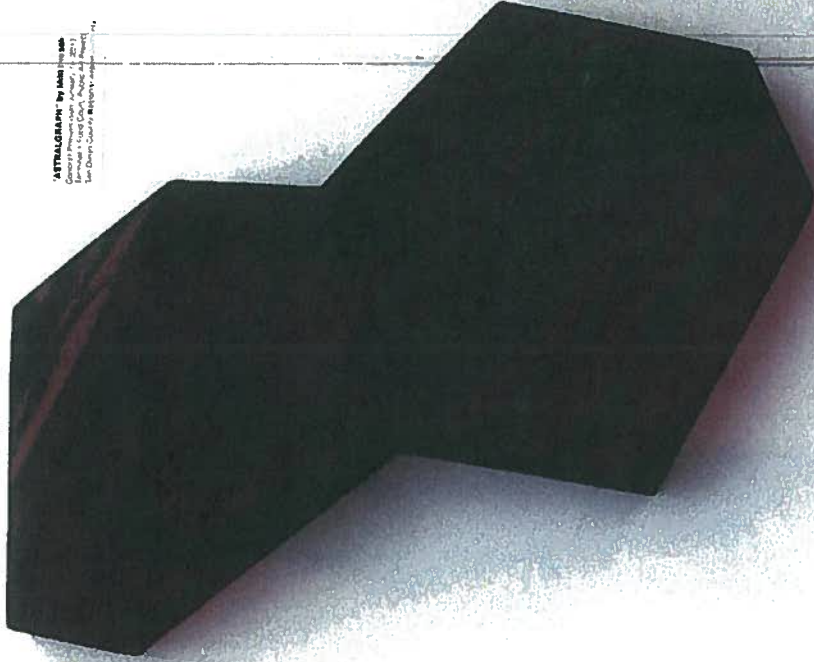
Preliminary Budget		
Testing/Prototyping		4000
Materials		
	wood	6000
	acrylic/metal/cement	5000
	electronics	4000
	hanging system	3500
	infrastructure	3000
Business expenses		
	administration	3500
	shop costs	3000
Labor		
	artist fee	17000
	production	40000
	consultants	5000
	installation	6000
Contingency		10000
	TOTAL	110000

ITEM 2

SCHEDULE - Standard	Month 1	Month 2	Month 3	Month 4	Month 5	Month 6	Month 7	Month 8	Month 9	Month 10	Month 11	Month 12
Phase 1 - Testing	Testing											
Phase 2 - Fabrication		Wood Fabrication										
Phase 3 - Site work/Installation					Metal/Acrylic/Cement			Lighting		Site Preparation		Installation

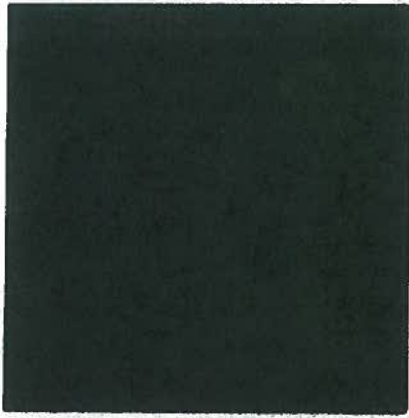
SCHEDULE - Accelerated	Month 1	Month 2	Month 3	Month 4	Month 5	Month 6	Month 7	Month 8	Month 9	Month 10	Month 11	Month 12
Phase 1 - Testing	Testing											
Phase 2 - Fabrication		Wood Fabrication										
Phase 3 - Site work/Installation					Metal/Acrylic/Cement			Lighting		Site Preparation		Installation

ITEM 2



"ASTRALGRAPH" by MIKI Iwasaki
Concept: A Long Chair, Acrylic and Brass
Site: Design Center for "ASTRALGRAPH" 1/16

Walnut horizontal panel of bench



Steel with beveled finish



Steel with random finish



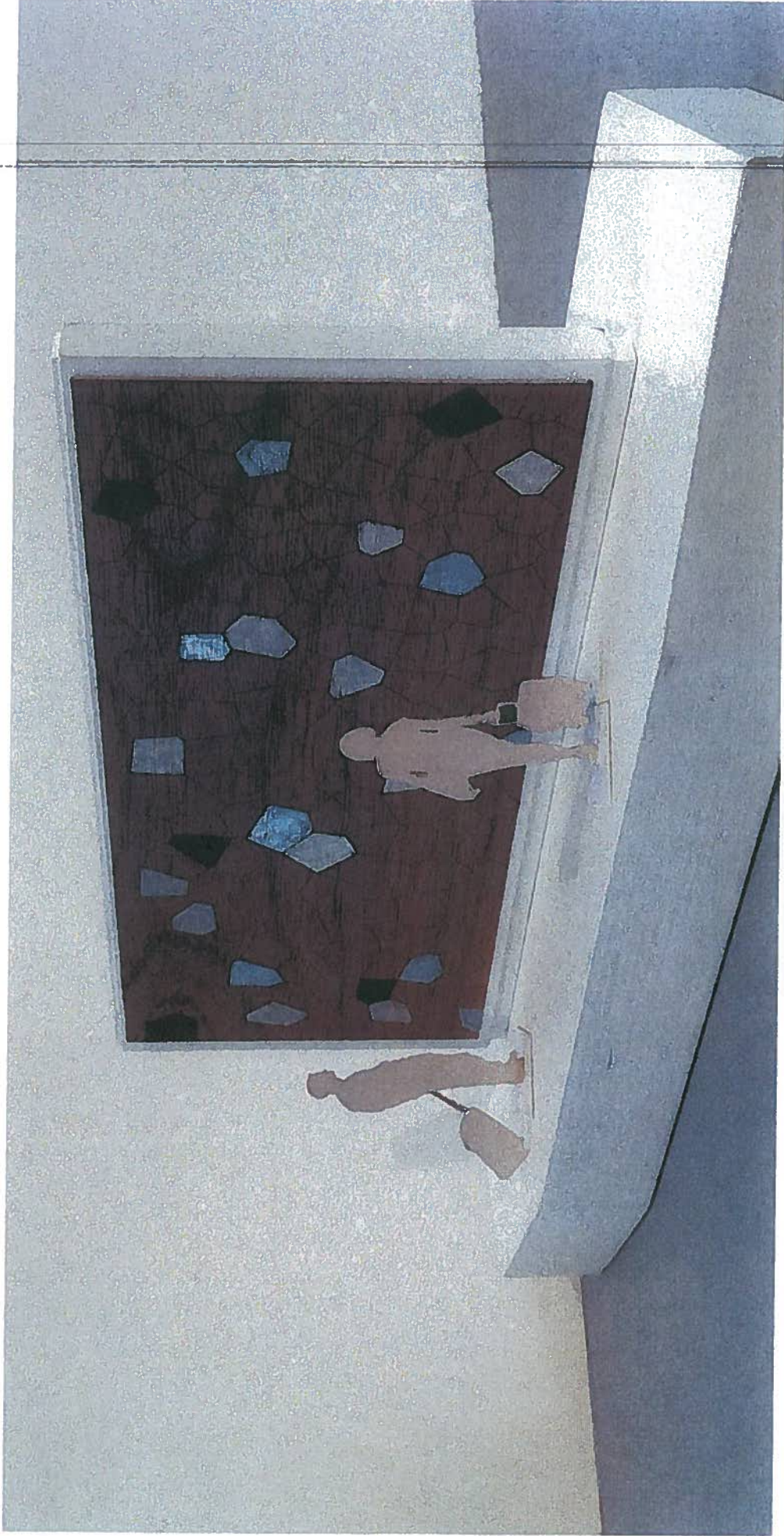
Brass with polished finish



Aluminum with random finish

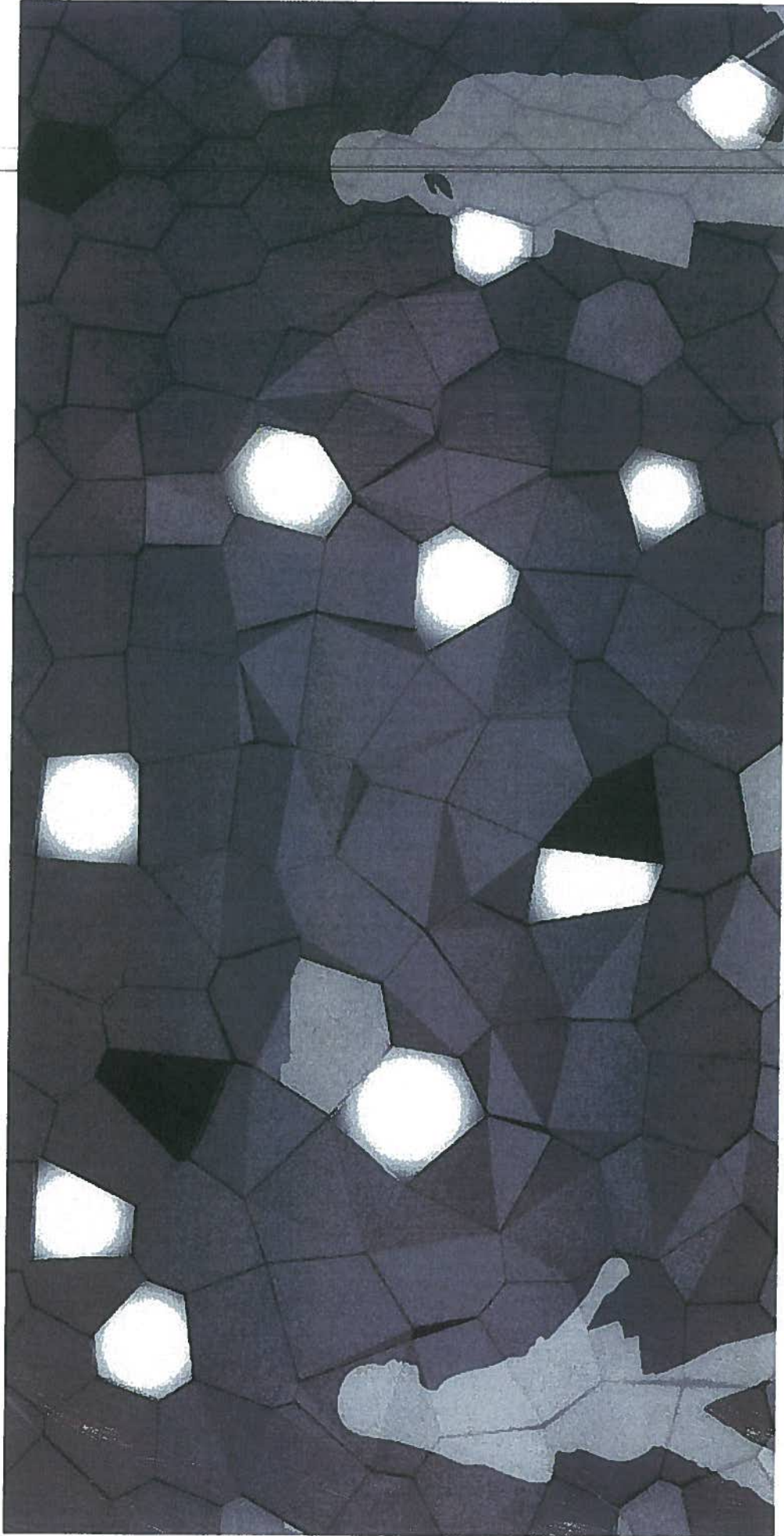
Acrylic with frosted finish

ITEM 2



"ASTRALGRAPH" by MIKI Iwasaki
Concept Presentation January 16, 2013

ITEM 2



"ASTRALGRAPH" by MIKI Iwasaki
Concept Presentation January 16, 2013