

QUIETER HOME PROGRAM

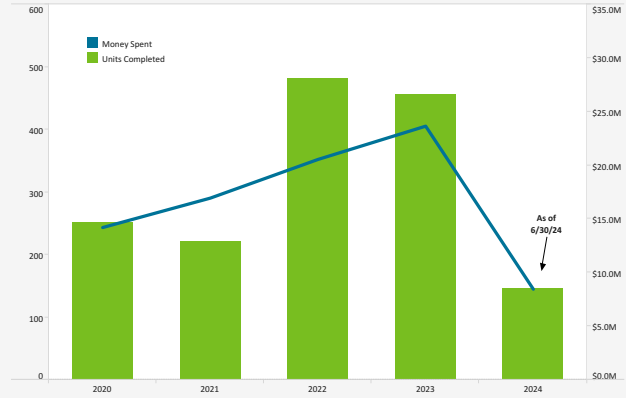
Quieter Home Program As Of:6/30/2024

Status of Homes	
Homes Completed this Month	17
Added this Month	27
Estimated Homes to Complete in CY 2024	300
Homes on Wait List	471
Total Homes Completed	5,748
Amount Spent on Multi-Family Units (USD) this Month	145,576

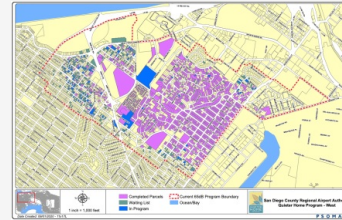
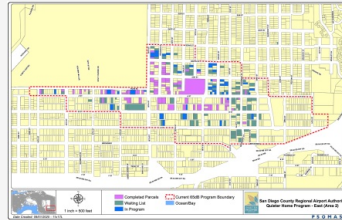
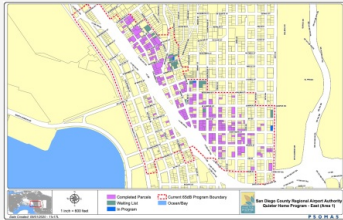
Project	Estimated Construction Start	# Homes
12.5 (QNRP, H)	Winter 2024	3
12.8	In Process	12
12.9	In Process	36
12.10	In Process	35
12.11	In Process	25
12.12	Spring 2024	29
13.1	Summer 2024	30
13.2	Summer 2024	35
13.3	Summer 2024	25
13.4	Fall 2024	24
13.5	Winter 2024	20
13.6	Winter 2025	33
13.7	Winter 2025	27
13.8	Spring 2025	32
13.9	Spring 2025	30
13.10	Summer 2025	28
13.11	Summer 2025	25
13.12	Fall 2025	25

QNRP: Quieter Non-Residential Program

From 2001 – 2009, \$89.8 Million Was Spent To Complete 1,334 Homes



Program Boundary Maps



Data Disclaimer: We do our best to ensure that the data we release is complete, accurate and useful. However, because we do not create the data, and because the processing required to make the data useful is complex, we are not liable for omissions, inaccuracies or changes in the data.

CURFEW VIOLATIONS

Curfew Violations (May - June 2024)

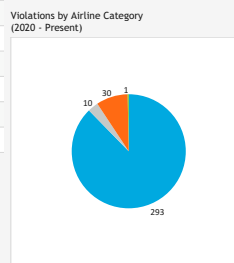
Date, Time	Airline	Aircraft Type	Status
5/6/2024, 12:36 AM	Delta Air Lines	A321	Pending Review
5/11/2024, 12:11 AM	Alaska Airlines	B738	Pending Review
5/13/2024, 12:26 AM	Alaska Airlines	B739	Pending Review
5/19/2024, 12:08 AM	United Airlines	B739	Pending Review
5/23/2024, 12:00 AM	American Airlines	B738	Pending Review
5/28/2024, 11:30 PM	United Airlines	B738	Pending Review
6/4/2024, 11:45 PM	American Airlines	B738	Pending Review
6/15/2024, 12:10 AM	Frontier Airlines	A20N	Pending Review
6/16/2024, 11:48 PM	Alaska Airlines	B739	Pending Review
6/20/2024, 11:55 PM	Air Canada	BCS3	Pending Review
6/21/2024, 12:25 AM	Alaska Airlines	B739	Pending Review
6/29/2024, 12:29 AM	Delta Air Lines	A21N	Pending Review
6/30/2024, 11:39 PM	Delta Air Lines	A21N	Pending Review
6/30/2024, 11:55 PM	JetBlue Airways	A321	Pending Review
6/30/2024, 11:57 PM	JetBlue Airways	A320	Pending Review

Noise Curfew Violations: Any aircraft that departs after 11:30 p.m. and before 6:30 a.m. is subject to a penalty.

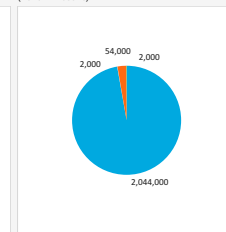
Annual Violations and Penalties Assessed (Year-to-Date)

Year	Total Violations	Fines Assessed
2020	18	\$16,000
2021	52	\$204,000
2022	89	\$804,000
2023	141	\$1,004,000
2024	35	\$76,000

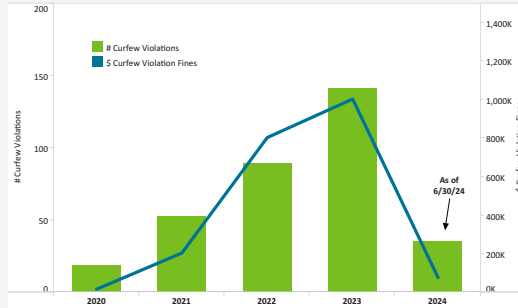
Violations by Airline Category (2020 - Present)



Fines Assessed by Airline Category (2020 - Present)



Curfew Violations and Penalties Assessed (by Year)

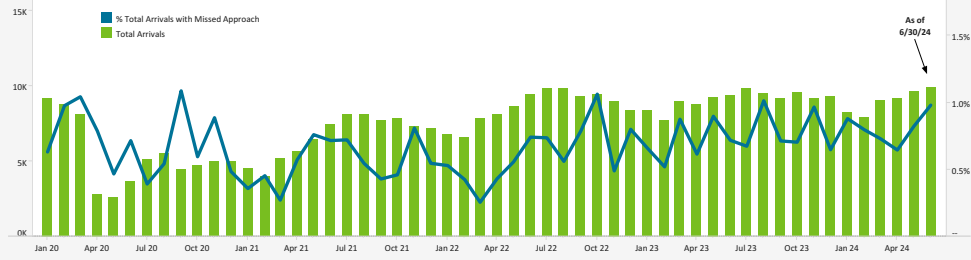


Airline Category	# Curfew Violations	\$ Curfew Violation Fines
A - Air	293	\$2,044,000
C - Cargo	10	\$20,000
G - G/A	30	\$54,000
M - Mil	1	\$2,000

Data Disclaimer: We do our best to ensure that the data we release is complete, accurate and useful. However, because we do not create the data, and because the processing required to make the data useful is complex, we are not liable for omissions, inaccuracies or changes in the data.

MISSED APPROACH STATISTICS

Total Arrivals Compared to (%) of Missed Approaches



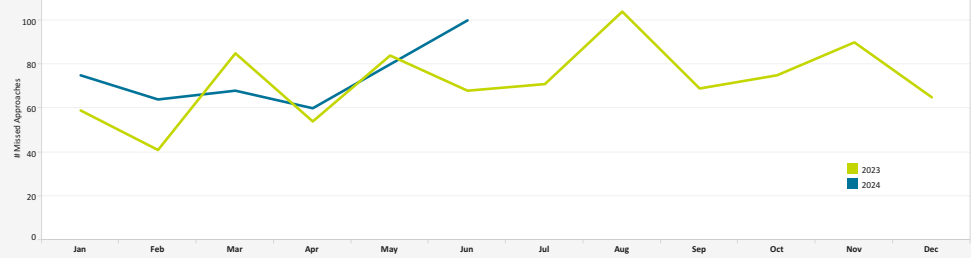
Missed Approaches: A procedure to maintain safety, initiated by the pilot or Air Traffic Control (ATC) for a pilot to abandon the approach to landing.

	2020	2021	2022	2023	2024
% Total Arrivals with Missed Approach	0.7%	0.6%	0.6%	0.8%	0.8%
Total Arrivals	64,576	79,016	102,974	108,560	53,767
Total Missed Approaches	508	470	668	865	447

Missed Approach Location Statistics

	Apr		May		Jun			Apr	May	Jun
	Day	Night	Day	Night	Day	Night				
Between Noise Dot #1 - Noise Dot #2	0	0	1	0	1	2	Between 265°-295° Heading (Standard)	33	40	61
Between Noise Dot #2 - JETI	11	2	21	1	29	2	East of Airport	6	15	6
Between JETI - Noise Dot #3	20	0	15	2	26	1	Left of 265°	17	23	24
Between Noise Dot #3 - Noise Dot #4	16	0	17	2	19	0	Right of 295°	4	1	9
Between Noise Dot #4 - Noise Dot #5	1	0	4	0	4	0				

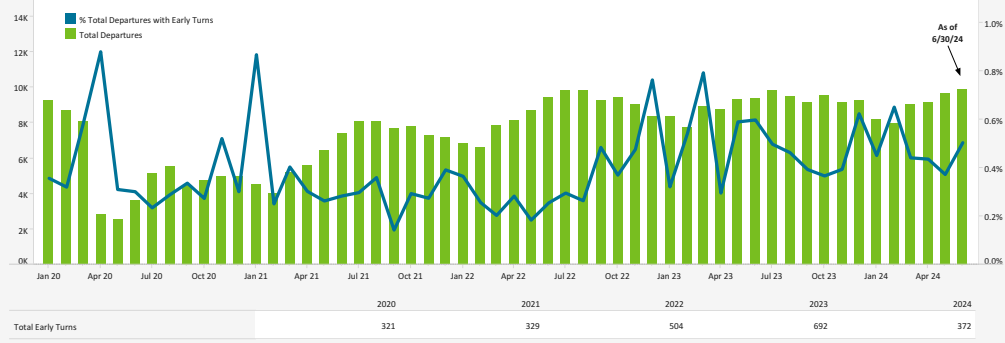
Total Missed Approaches



Data Disclaimer: We do our best to ensure that the data we release is complete, accurate and useful. However, because we do not create the data, and because the processing required to make the data useful is complex, we are not liable for omissions, inaccuracies or changes in the data.

EARLY TURN STATISTICS

Total Departures Compared to (%) of Early Turns



The Airport Authority has defined early turns as those aircraft that turn right prior to FAA Noise Dot #1 at the 295-degree heading or turn left prior to the FAA Noise Dot #3 at the 265-degree heading.

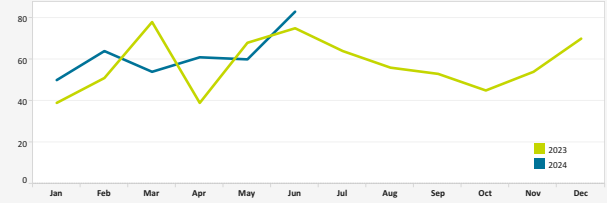
Departure Statistics

	Apr	May	Jun
Jets Turning Left	4,693	5,039	5,195
Between Z2000 and Noise Dots	392	525	732
Compliant with Nighttime departure Heading (290°)	517	473	574
Not Nighttime Compliant - Over La Jolla	36	35	28
Not Nighttime Compliant - Straight Out	1	5	5
Not Nighttime Compliant - East	0	0	0

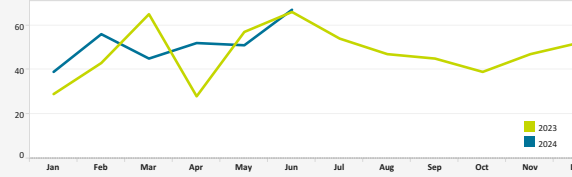
Cause of Early Turns

	Apr	May	Jun
Caused by ATC Vectors	50	56	77
Caused by Pilot Deviation	0	2	2
Caused by Weather	11	2	3

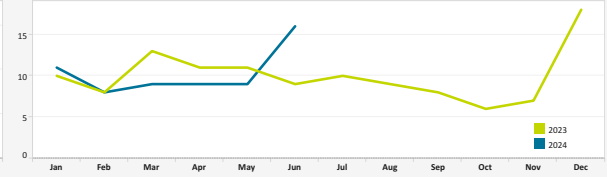
Total Early Turns



Over Point Loma



Over Mission Beach



Early Turns by Operator (June 2024)

Airline	Left Early Turns	Total Operator Departures	% Departures with Left Early Turns
Southwest Airlines	14	6,026	0.2%
SkyWest Airlines	4	2,014	0.2%
Alaska Airlines	7	1,981	0.4%
Delta Air Lines	10	1,678	0.6%
United Airlines	7	1,635	0.4%
American Airlines	5	1,576	0.3%
General Aviation	4	811	0.5%
Spirit Airlines	2	643	0.3%
Frontier Airlines	2	556	0.4%
Netjets	2	413	0.5%
Horizon Air	2	174	1.1%
Air Canada	1	143	0.7%
Flexjet	1	107	0.9%
West Air (USA)	1	90	1.1%
UPS Airlines	1	71	1.4%
Westjet	1	70	1.4%
Allegiant Air	1	70	1.4%
Lufthansa	1	41	2.4%
STONEWALL VENTURES LLC	1	6	16.7%

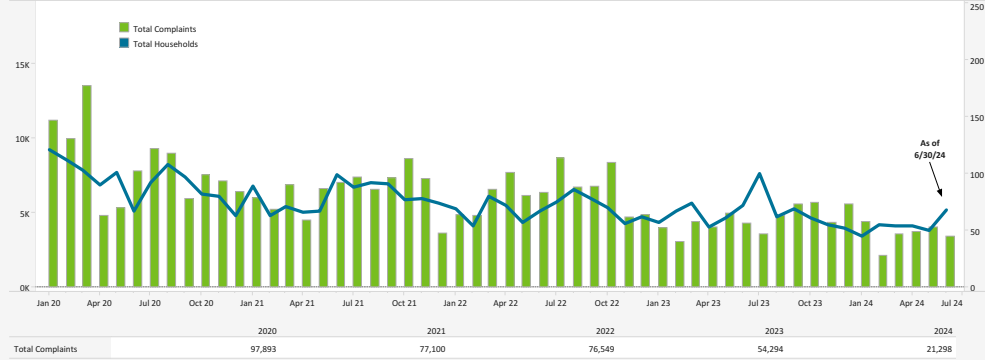
Early Turns by Operator (June 2024)

Airline	Right Early Turns	Total Operator Departures	% Departures with Right Early Turns
Southwest Airlines	3	6,026	0.0%
SkyWest Airlines	1	2,014	0.0%
Delta Air Lines	1	1,678	0.1%
United Airlines	1	1,635	0.1%
American Airlines	3	1,576	0.2%
Spirit Airlines	1	643	0.2%
Netjets	2	413	0.5%
M INVESTMENTS LLC	1	4	25.0%
BAG MANAGEMENT INC	1	4	25.0%
Personal Jet Charter Inc	1	2	50.0%
BRAVO TANGO C12 LLC	1	2	50.0%

Data Disclaimer: We do our best to ensure that the data we release is complete, accurate and useful. However, because we do not create the data, and because the processing required to make the data useful is complex, we are not liable for omissions, inaccuracies or changes in the data.

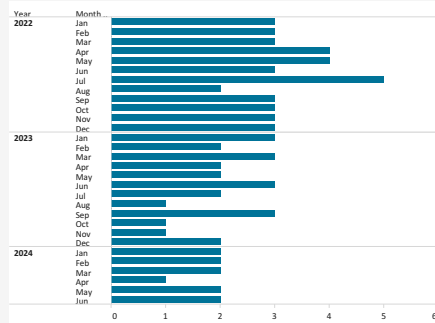
NOISE COMPLAINT STATISTICS

Total Complaints Compared to Total Households

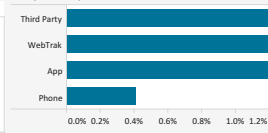


The Authority reports all complaints.

Number of Households with 500+ Complaints per Month



Complaints by Contact Method



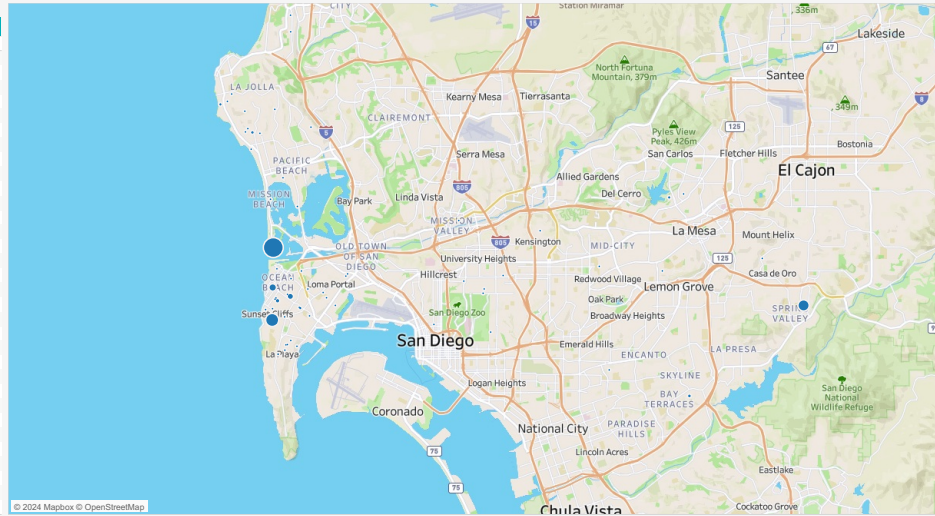
Disturbance Type

Disturbance Type	# Complaints	% Total
Too Loud	3,354	98.4%
Overflight	21	0.6%
Curfew Violation	13	0.4%
Suspected Off Course	11	0.3%
Increased Flight Volume	4	0.1%
Other	3	0.1%
Helicopter	1	0.0%

Number of Complaints by Neighborhood (June 2024)

Neighborhood	Total Complaints	Total Households
Grand Total	3,407	68
Mission Beach	1,667	3
Sunset Cliffs	671	3
Spring Valley	469	1
Ocean Beach	191	5
Point Loma Heights	190	9
La Mesa	34	3
Beach Barber Tract	32	4
Bay Terraces	30	1
Muirlands	29	2
Bird Rock	15	3
Wooded Area	14	4
Loma Portal	12	3
Del Mar Heights	7	1
El Cerrito	5	1
La Jolla Alta	5	1
South Park	5	1
Casa De Oro-Mount Helix	4	1
North Park	4	4
Pacific Beach	4	3
La Jolla Mesa	3	1
Del Mar	2	1
La Jolla Heights	2	2
La Playa	2	2
Midway District	2	1
Bankers Hill	1	1
Hillcrest	1	1
Kensington	1	1
Liberty Station	1	1
Loma Heights	1	1
Mission Valley East	1	1
Roseville-Fleet Ridge	1	1
Valencia Park	1	1

Location of Complaints



Data Disclaimer: We do our best to ensure that the data we release is complete, accurate and useful. However, because we do not create the data, and because the processing required to make the data useful is complex, we are not liable for omissions, inaccuracies or changes in the data.