

Board Members

Gil Cabrera (Chair)
James Sly (Vice Chair)
Whitney Benzian
Lidia S. Martinez
Monica Montgomery Steppe
Rafael Perez
Esther C. Sanchez
Steve Vaus
Marni von Wilpert

Authority Advisory Committee Meeting Agenda

Wednesday, July 17, 2024

9:00 A.M.

San Diego County Regional Airport Authority
Administration Building
Third Floor – Pan Am Conference Room
2417 McCain Road
San Diego, California 92101

Ex-Officio Board Members

Col. Thomas Bedell
Michele Perrault
Everett Townsend

President/CEO

Kimberly J. Becker

This Agenda contains a brief general description of each item to be considered. If comments are made to the Committee without prior notice, or are not listed on the Agenda, no specific answers or responses should be expected at this meeting pursuant to State law.

Copies of written documentation relating to each item of business on the Agenda are on file in the Airport Authority's office and are available for public inspection.

PLEASE COMPLETE A "REQUEST TO SPEAK" FORM PRIOR TO THE COMMENCEMENT OF THE MEETING AND SUBMIT IT TO THE CLERK OF THE COMMITTEE.

The Authority has identified a local company to provide oral interpreter and translation services for public meetings. If you require oral interpreter or translation services, please telephone the Board Services/Authority Clerk Department with your request at (619) 400-2400 at least three (3) working days prior to the meeting

Wednesday, July 17, 2024

CALL TO ORDER:

PLEDGE OF ALLEGIANCE:

ROLL CALL:

Committee Members: Oris Dunham, Michael DiGirolamo, Jamie Abott, Christiana Debenedict, Dion Akers, Jeffrey Gattas, Ansermio (AJ) Estrada, Nikia Clarke, Erik Bruvold, Jessica Anderson, Jason Anderson, Mike Donovan, Mary Dover, Kavin Schieferdecker, Brigitte Browning, Ann Fox, Jim Gruny, Paul Robinson, Brittany Applestein Syz

Board Representatives: Whitney Benzian, Lidia S. Martinez

CHAIR'S COMMENTS:

NEW BUSINESS:

- 1. San Diego International Airport, Airport Land Use Compatibility Plan (ALUCP) Update**
(Sjohnna Knack, Director, Planning & Environmental Affairs and Ed Gowens, Senior Airport Planner)
- 2. New Terminal 1 Parking Plaza Opening Update**
(Brendan Reed, Senior Director, Operational Planning & Readiness)

NON-AGENDA PUBLIC COMMENT:

Non-Agenda Public Comment is reserved for members of the public wishing to address the Committee on matters for which another opportunity to speak **is not provided on the Agenda**, and which is within the jurisdiction of the Board. Please submit a completed speaker slip to the Authority Clerk. ***Each individual speaker is limited to three (3) minutes. Applicants, groups and jurisdictions referring items to the Board for action are limited to five (5) minutes.***

Note: Persons wishing to speak on specific items should reserve their comments until the specific item is taken up by the Committee.

COMMITTEE MEMBER COMMENTS:

ADJOURNMENT:

Wednesday, July 17, 2024

Policy for Public Participation in Board, Airport Land Use Commission (ALUC), and Committee Meetings (Public Comment)

- 1) Persons wishing to address the Board, ALUC, and Committees shall submit a "Request to Speak" form prior to the initiation of the portion of the agenda containing the item to be addressed (e.g., Public Comment and General Items). Failure to submit a form shall not preclude testimony, if permission to address the Board is granted by the Chair.
- 2) The Public Comment Section at the beginning of the agenda is reserved for persons wishing to address the Board, ALUC, and Committees on any matter for which another opportunity to speak is not provided on the Agenda, and on matters that are within the jurisdiction of the Board.
- 3) Persons wishing to speak on specific items listed on the agenda will be afforded an opportunity to speak during the presentation of individual items. Persons wishing to speak on specific items should reserve their comments until the specific item is taken up by the Board, ALUC and Committees.
- 4) If many persons have indicated a desire to address the Board, ALUC and Committees on the same issue, then the Chair may suggest that these persons consolidate their respective testimonies. Testimony by members of the public on any item shall be limited to **three (3) minutes per individual speaker and five (5) minutes for applicants, groups and referring jurisdictions.**
- 5) Pursuant to Authority Policy 1.33 (8), recognized groups must register with the Authority Clerk prior to the meeting.
- 6) After a public hearing or the public comment portion of the meeting has been closed, no person shall address the Board, ALUC, and Committees without first obtaining permission to do so.

Additional Meeting Information

NOTE: This information is available in alternative formats upon request. To request an Agenda in an alternative format, or to request a sign language or oral interpreter, or an Assistive Listening Device (ALD) for the meeting, please telephone the Authority Clerk's Office at (619) 400-2550 at least three (3) working days prior to the meeting to ensure availability.

For those planning to attend the Commission meeting, parking is available in the Airport Administration Building Parking Lot (entrance on the east side of McCain Road). Visitors can park in the lot from 8:00 a.m. to 5:00 p.m.

You may also reach the SDCRAA Building by using public transit via the San Diego MTS System, Route 923. For route and fare information, please call the San Diego MTS at (619) 233-3004 or 511.

San Diego International Airport - ALUCP Update

SDCRAA Advisory Committee

July 17, 2024

Agenda

- Role of ALUC
- ALUCP Background
- Reasons for Update
- Update Process
- Proposed Changes
- Next Steps



Role of ALUC

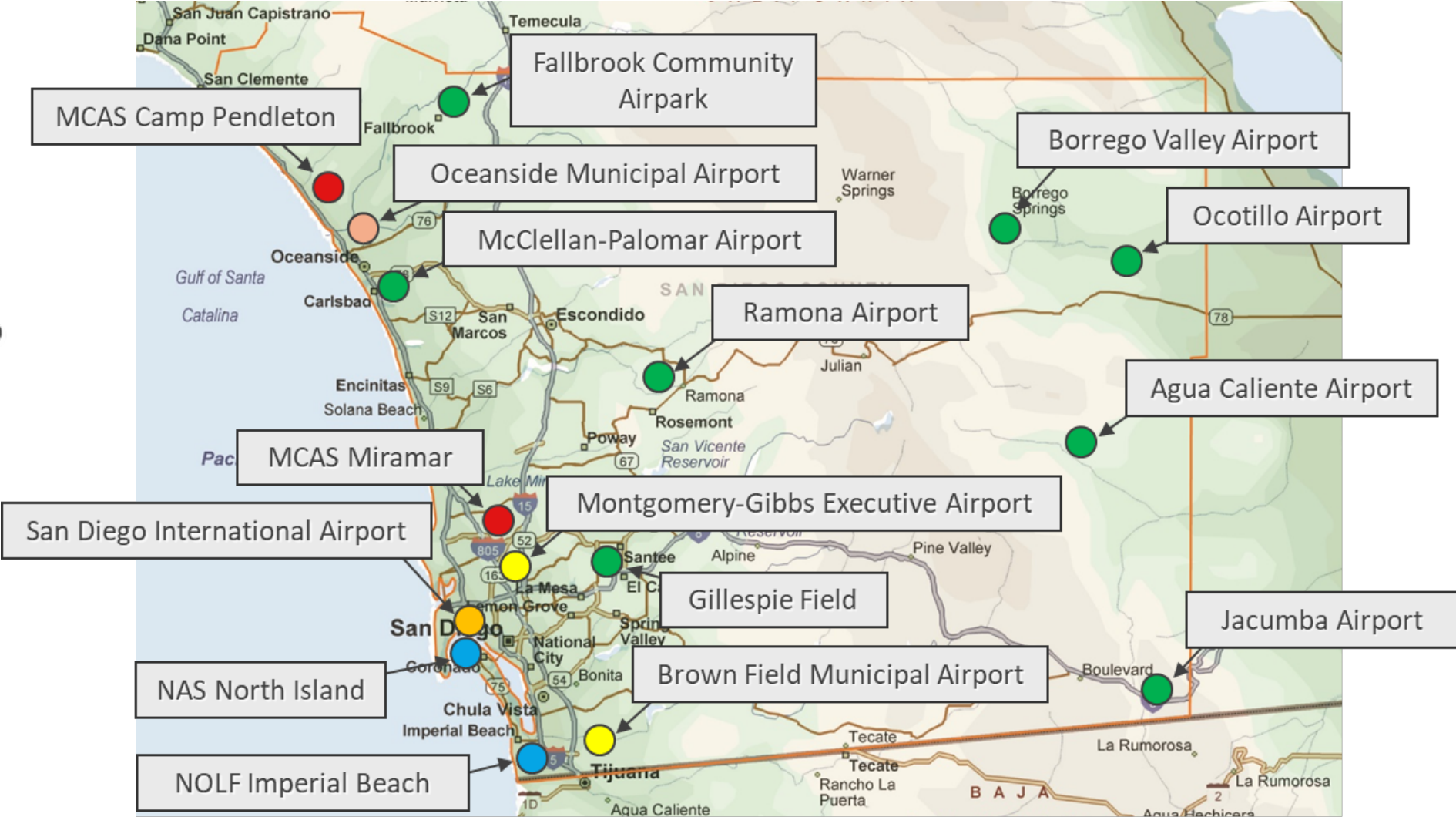
- Airport Authority serves as ALUC
- Prepares, adopts, and updates ALUCPs for all military and public-use airports in San Diego county
- ALUCPs must be based upon guidance from Caltrans Aeronautics Division



Airports in San Diego County

Airport Operator

- U.S. Marine Corps
- U.S. Navy
- County of San Diego
- City of San Diego
- SDCRAA
- City of Oceanside



Purpose of ALUCP

1. Protect people and property from noise and safety impacts
2. Protect the airport from encroaching non-compatible land uses
3. Does not impact existing uses
4. Does not impact airport development or aircraft operations



Implementation of ALUCP

1. ALUC adopts ALUCP as advisory guidance to agencies with zoning and building permit authority
2. Agencies can address ALUCP in the following ways:
 - Integrate ALUCP policies into zoning and building requirements, OR
 - Overrule the ALUCP, in whole or in part, through statutory process, OR
 - Overrule the application of the ALUCP to specific land use projects as proposed

SDIA ALUCP History

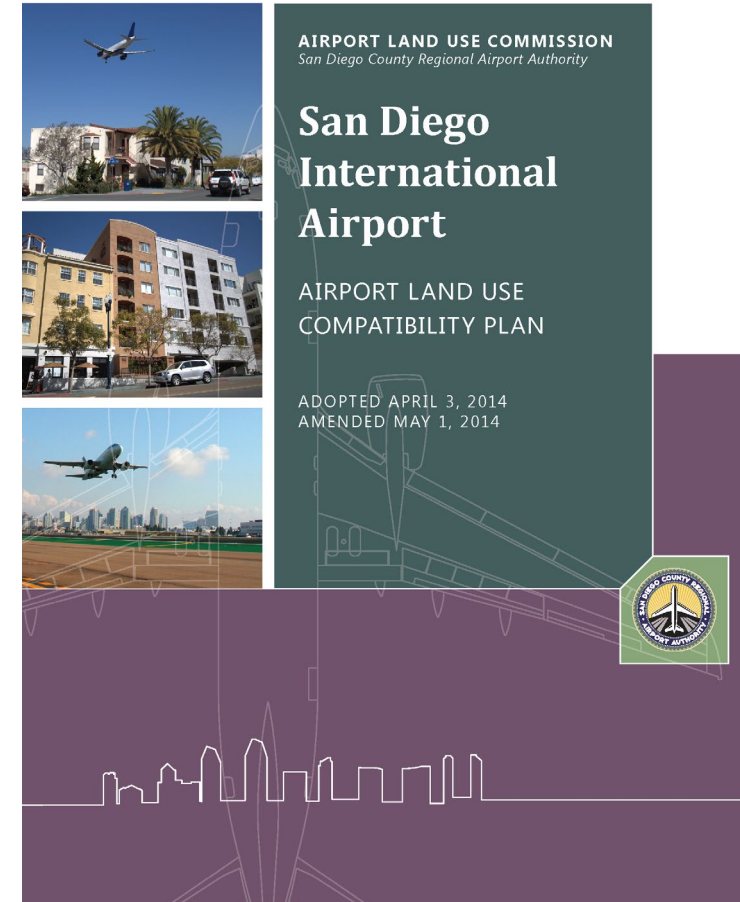
2014 – ALUC prepares and adopts ALUCP

Post 2014 – City of San Diego implements

2021 – FAA approves new Airport Layout Plan
and aviation activity forecast

2023 – ALUCP update process begins

2024 – Updated ALUCP adopted by end of year



Basis for SDIA ALUCP Update

- Changes in Airport Layout Plan and Operations
 - Modification to runway protection zones (RPZs) per updated FAA guidance
 - New aviation demand forecast and changes in aircraft fleet mix

Update Process to Date

Evaluate new
information

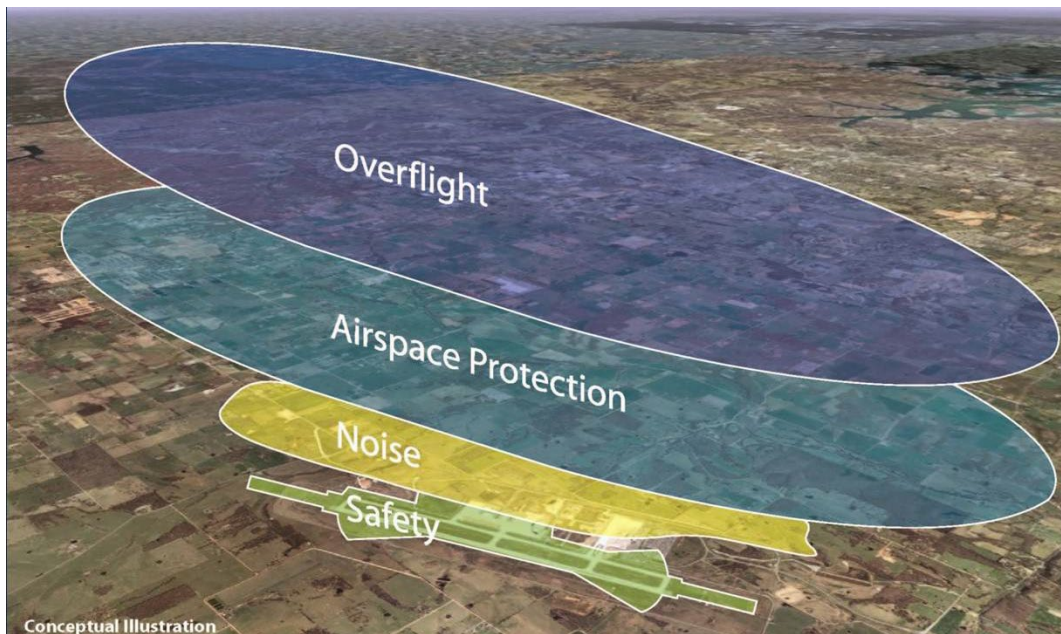
Coordinate with
implementing
agencies

Release Draft
ALUCP for
public review

Public meeting

SDIA ALUCP Update info can be found at - san.org/SDIA_ALUCP

Four Component Factors of an ALUCP

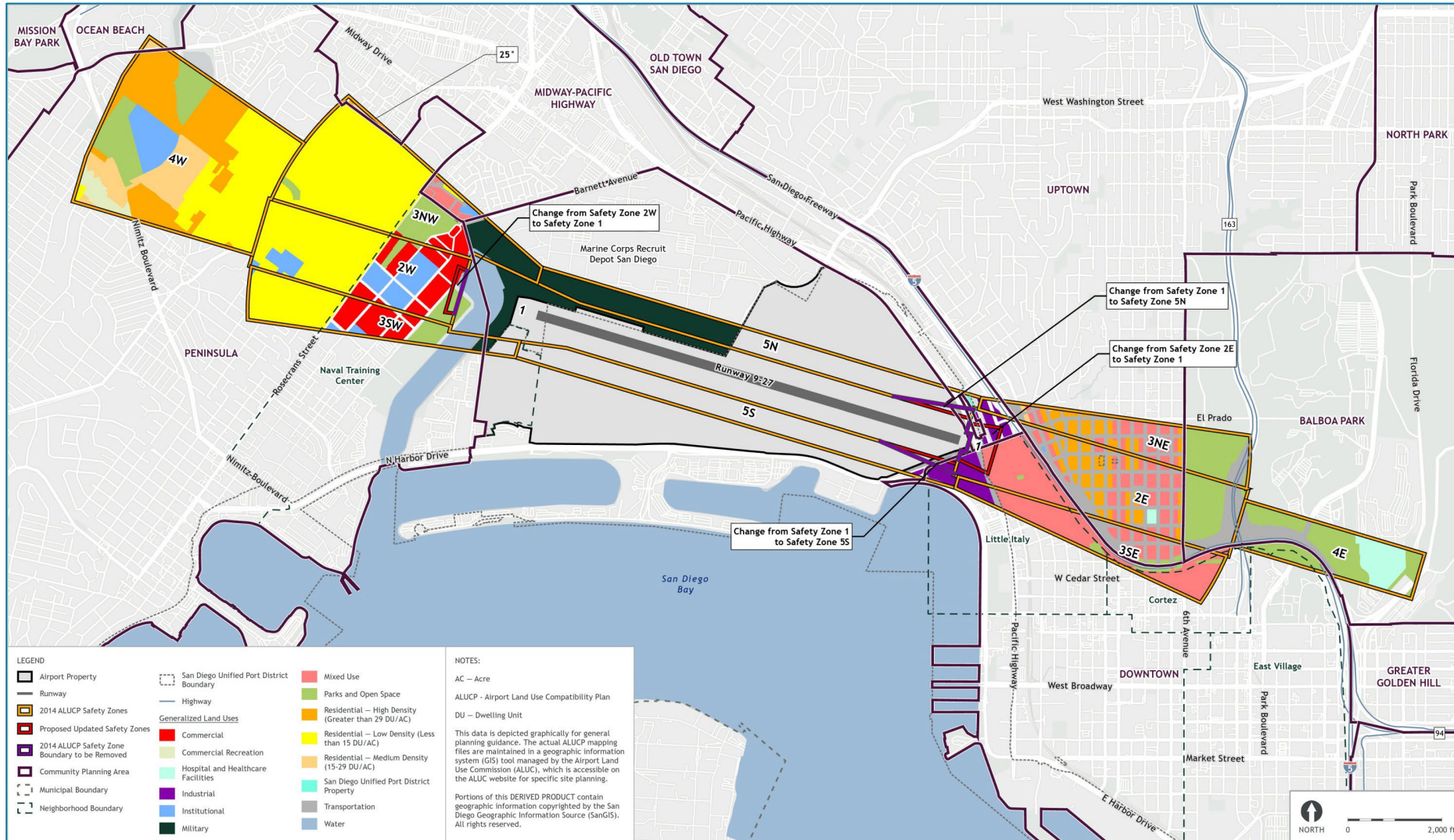


- 1 Overflight**
Disclosure for new residential development
- 2 Airspace Protection**
Height of structures, hazards to flight
- 3 Noise**
Noise-sensitive uses
- 4 Safety**
Concentration of people (density/intensity)
Vulnerable occupants

ALUCP Compatibility Factors

Compatibility Factor	Notable Updates
Safety	Safety Zone 1 updated to match RPZs depicted on Federal Aviation Administration (FAA) approved ALP
Noise	Noise contours adjusted based on updated aviation demand forecast
Airspace	Area subject to maximum height limits updated to include one engine inoperative (OEI) surface
Overflight	Area expanded to capture areas of noise complaints and flight tracks

Safety Compatibility - Safety Zones

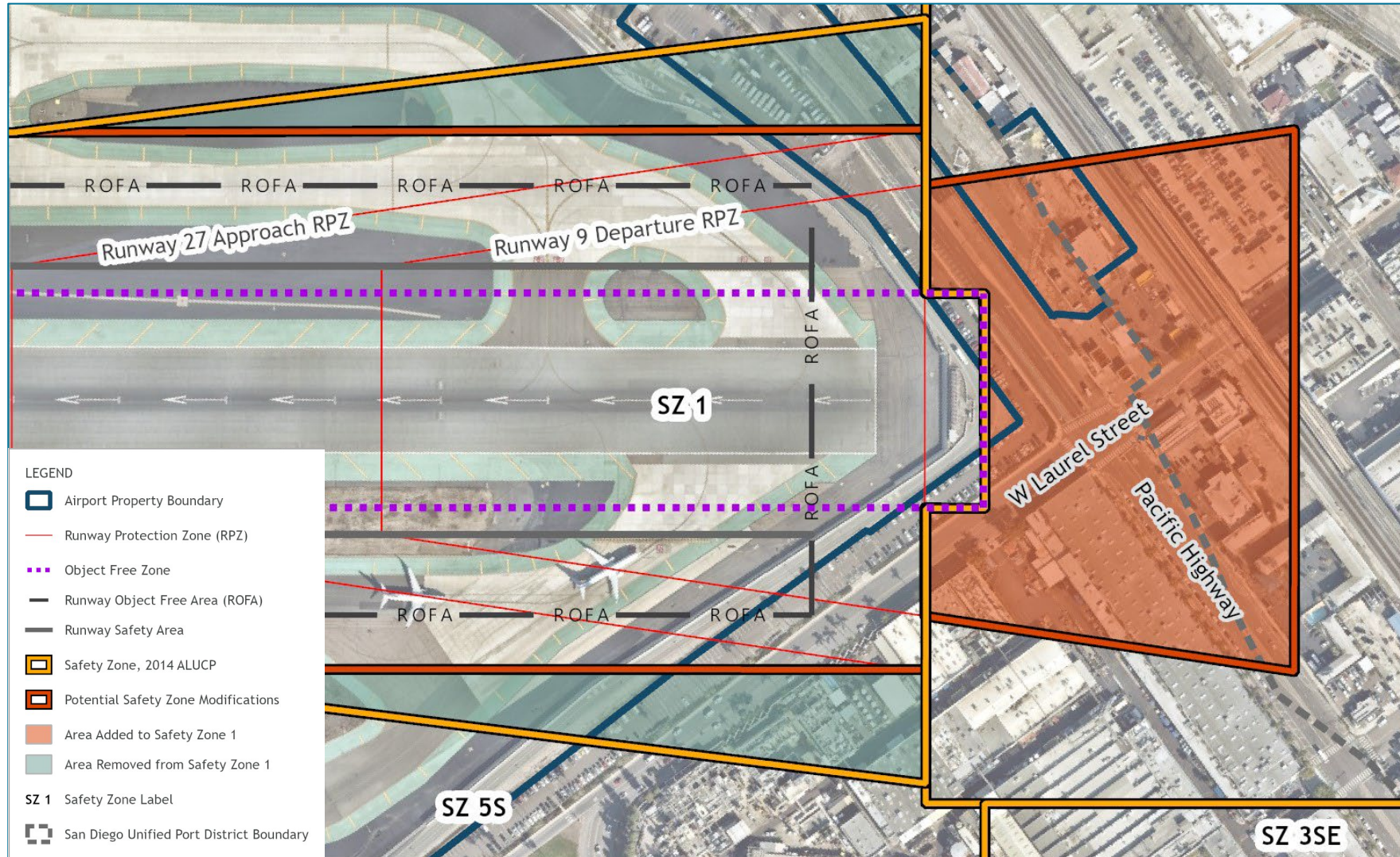


Safety Compatibility - Runway Protection Zone (RPZ)

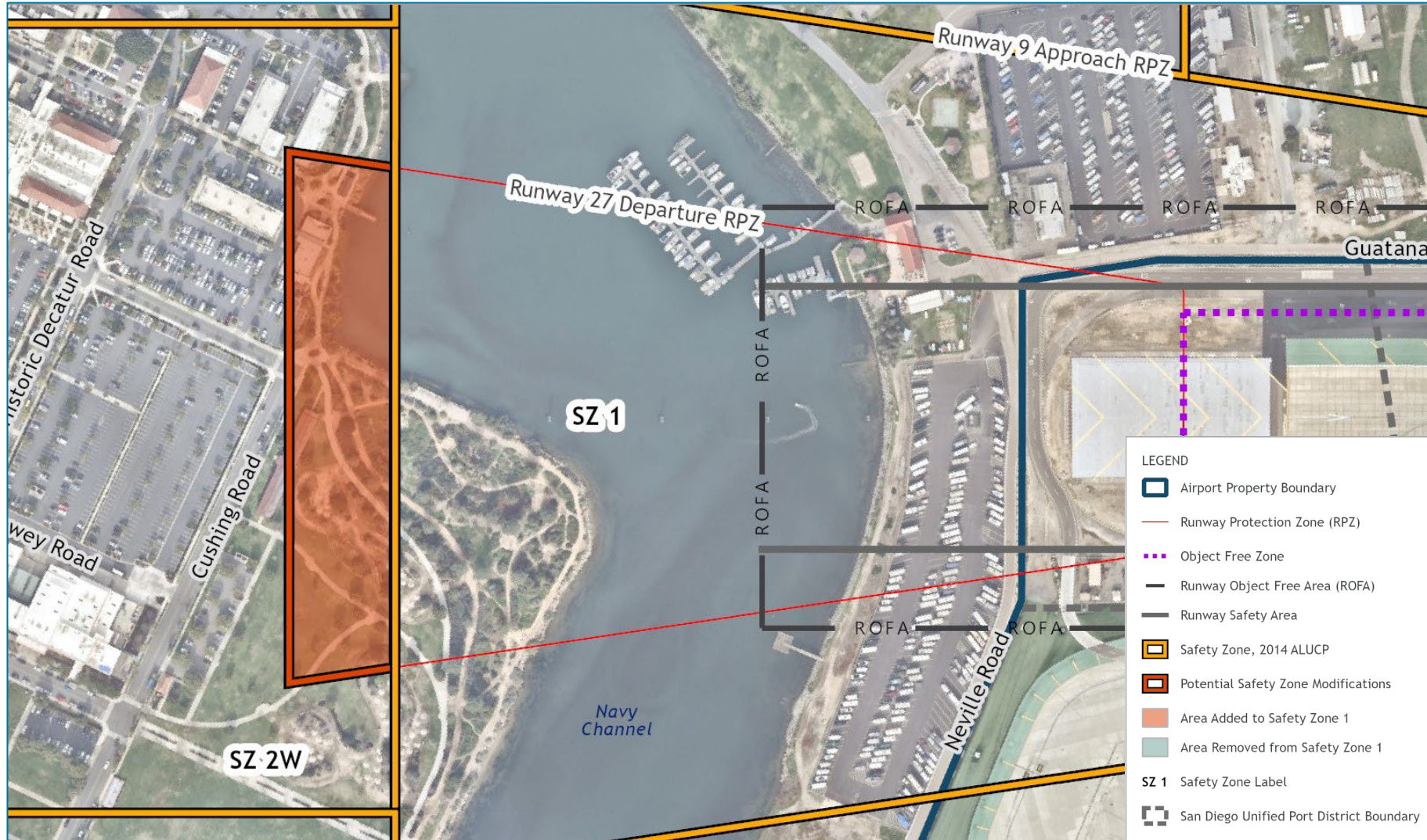
- RPZs are two-dimensional trapezoid areas defined off the ends of runways.
- One set of RPZs is associated with aircraft approach and another with aircraft departure.
- “The RPZ function is to enhance the protection of people and property on the ground...”
- “It is desirable to clear the entire RPZ of all above-ground objects to minimize risk to the public.”*
- The RPZs correspond to Safety Zone 1 in the ALUCP.

* US Department of Transportation, Federal Aviation Administration, Advisory Circular 150/5300-13B, *Airport Design*, March 2022 (Paragraph I.3.2).

Safety Compatibility - SZ 1 Changes



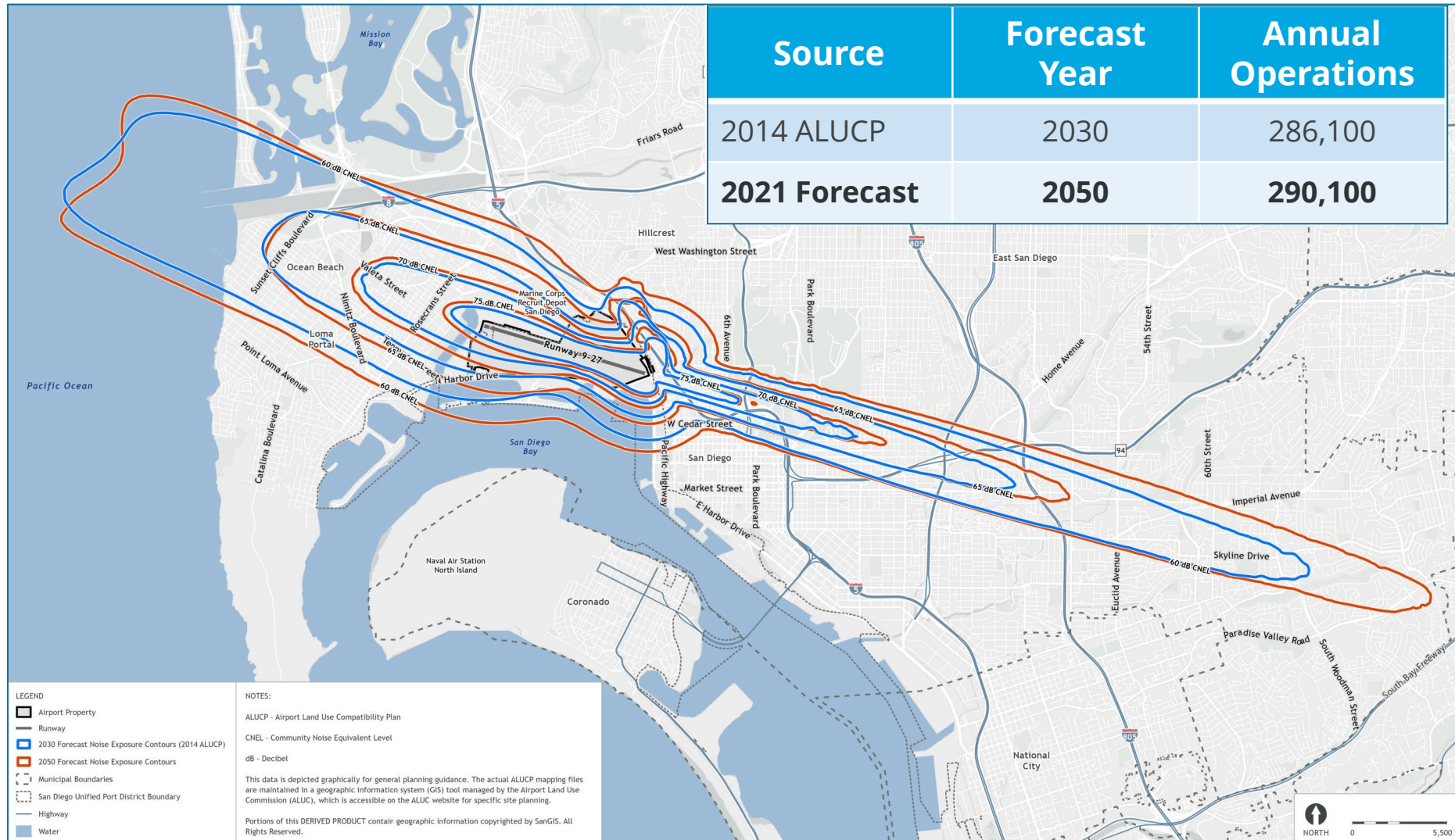
Safety Compatibility - SZ 1 Changes



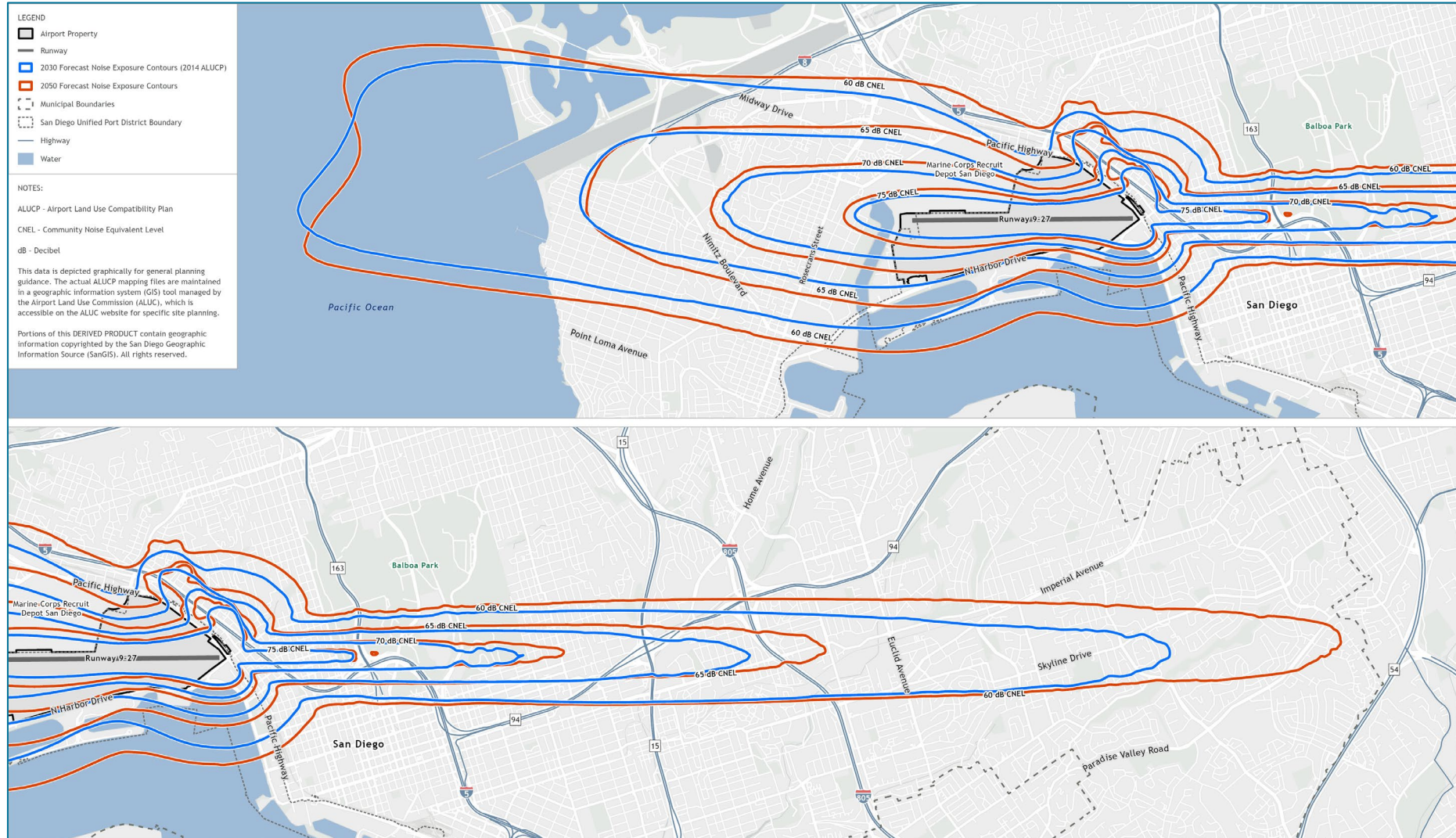
Safety Compatibility - Other Updates

Policy	Updates
Existing uses in Safety Zone 1	Changes in use of existing buildings are acceptable if they do not exceed the nonresidential intensity of the prior use <u>New construction is not compatible within Safety Zone 1</u>
New uses in existing buildings	No longer exempt from ALUCP intensity standards

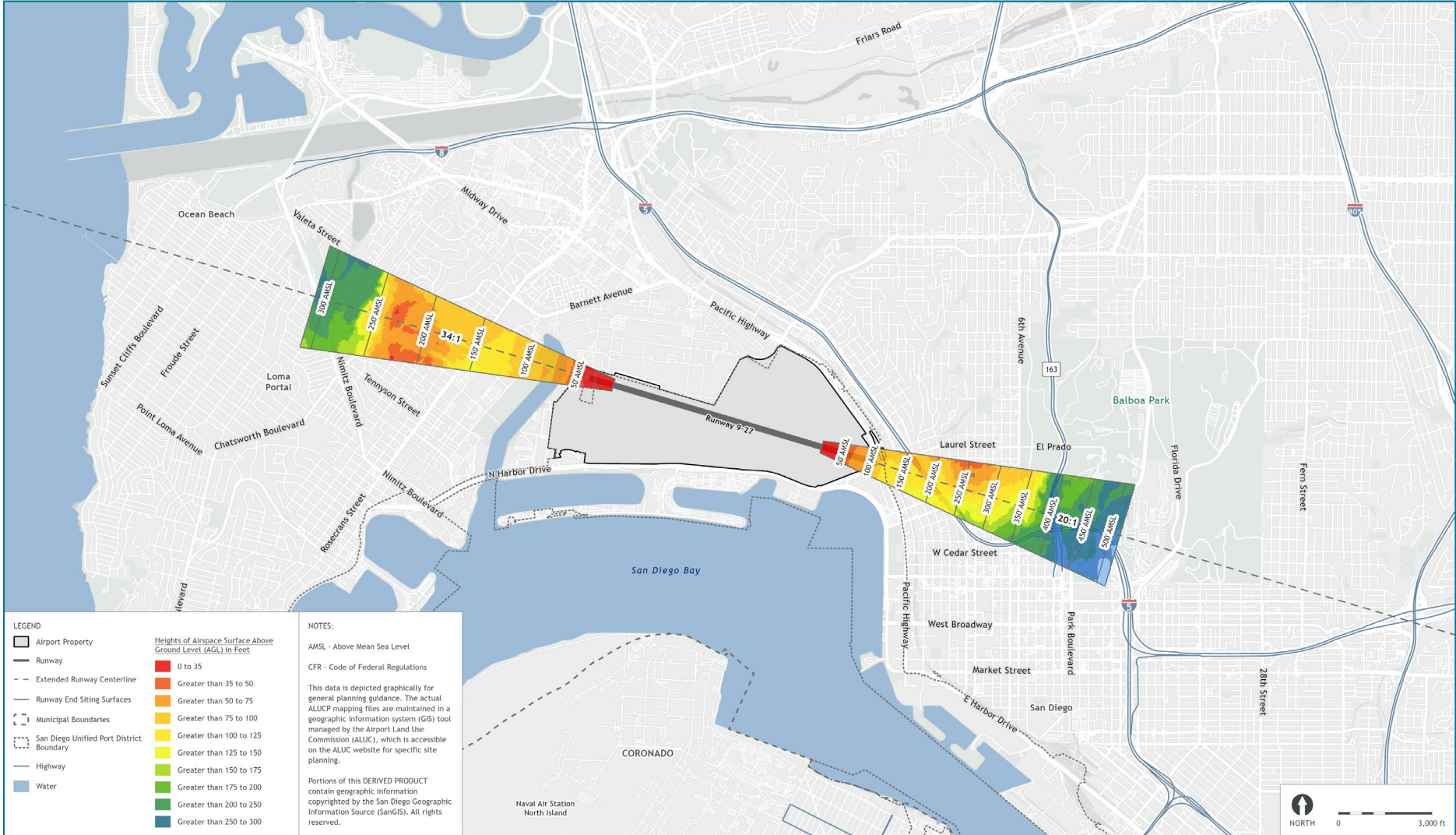
Noise Compatibility



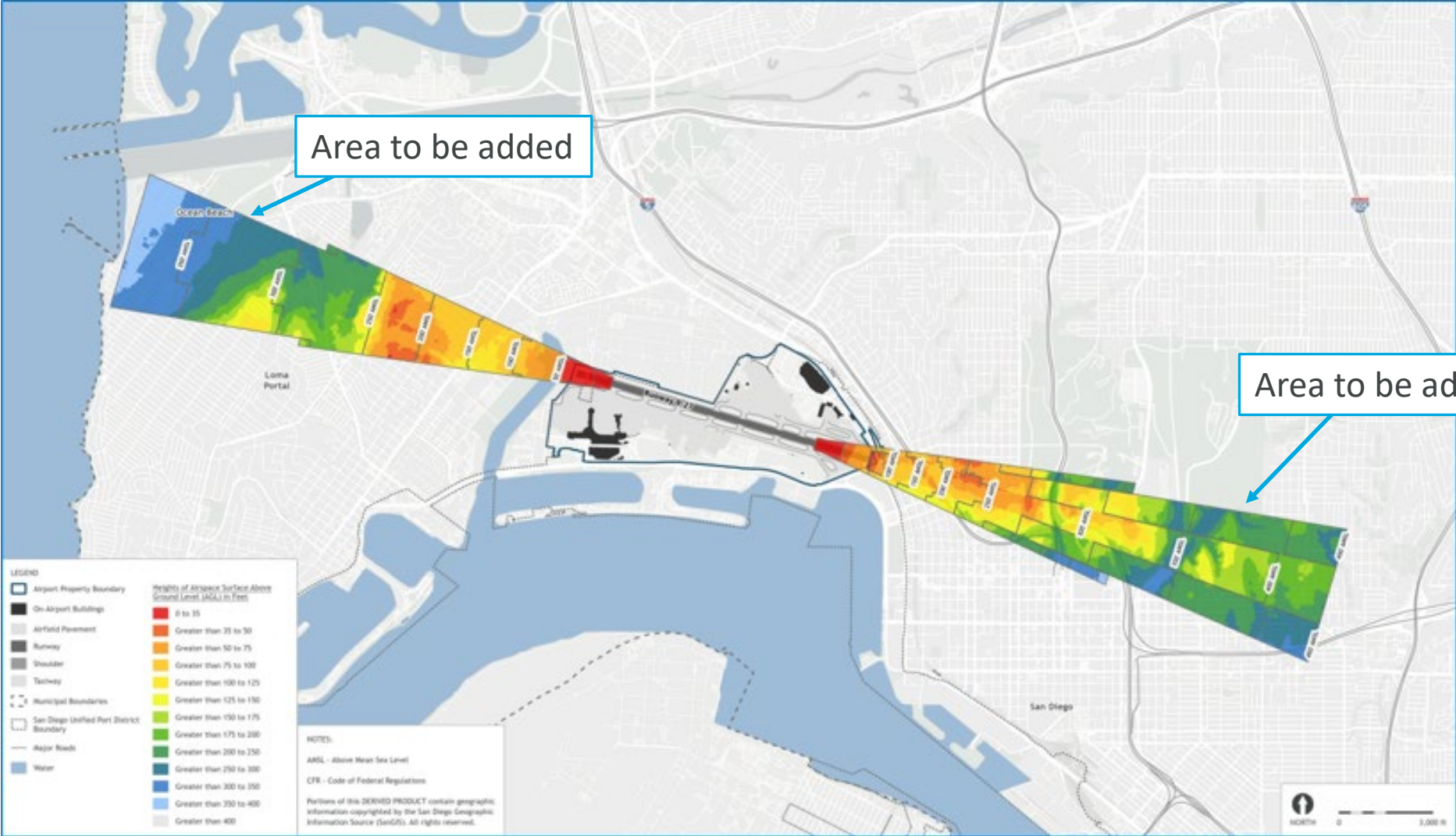
Noise Compatibility



Airspace Compatibility - Maximum Height Limits, 2014 ALUCP



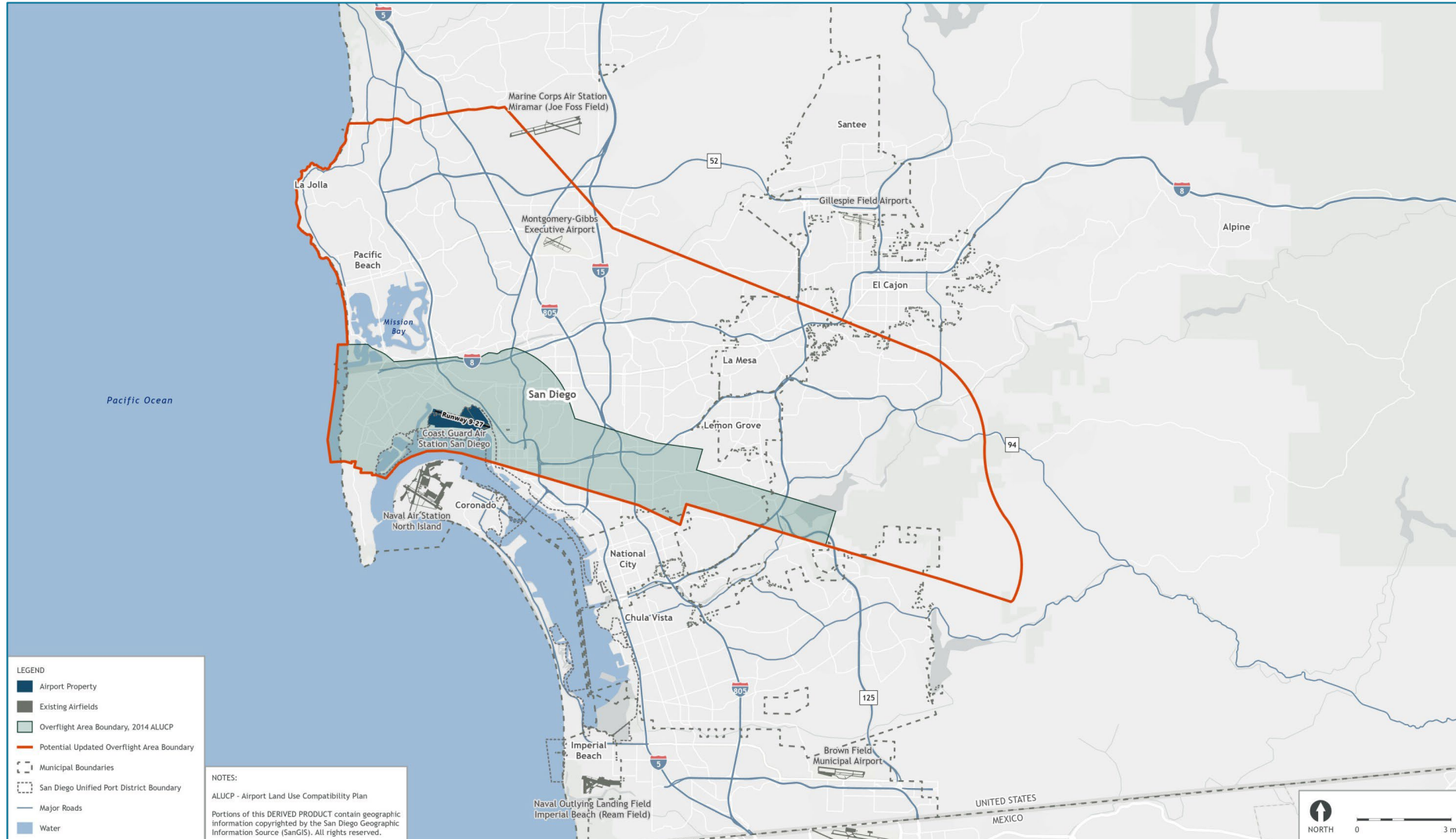
Airspace Compatibility - Maximum Height Limits, Updated ALUCP



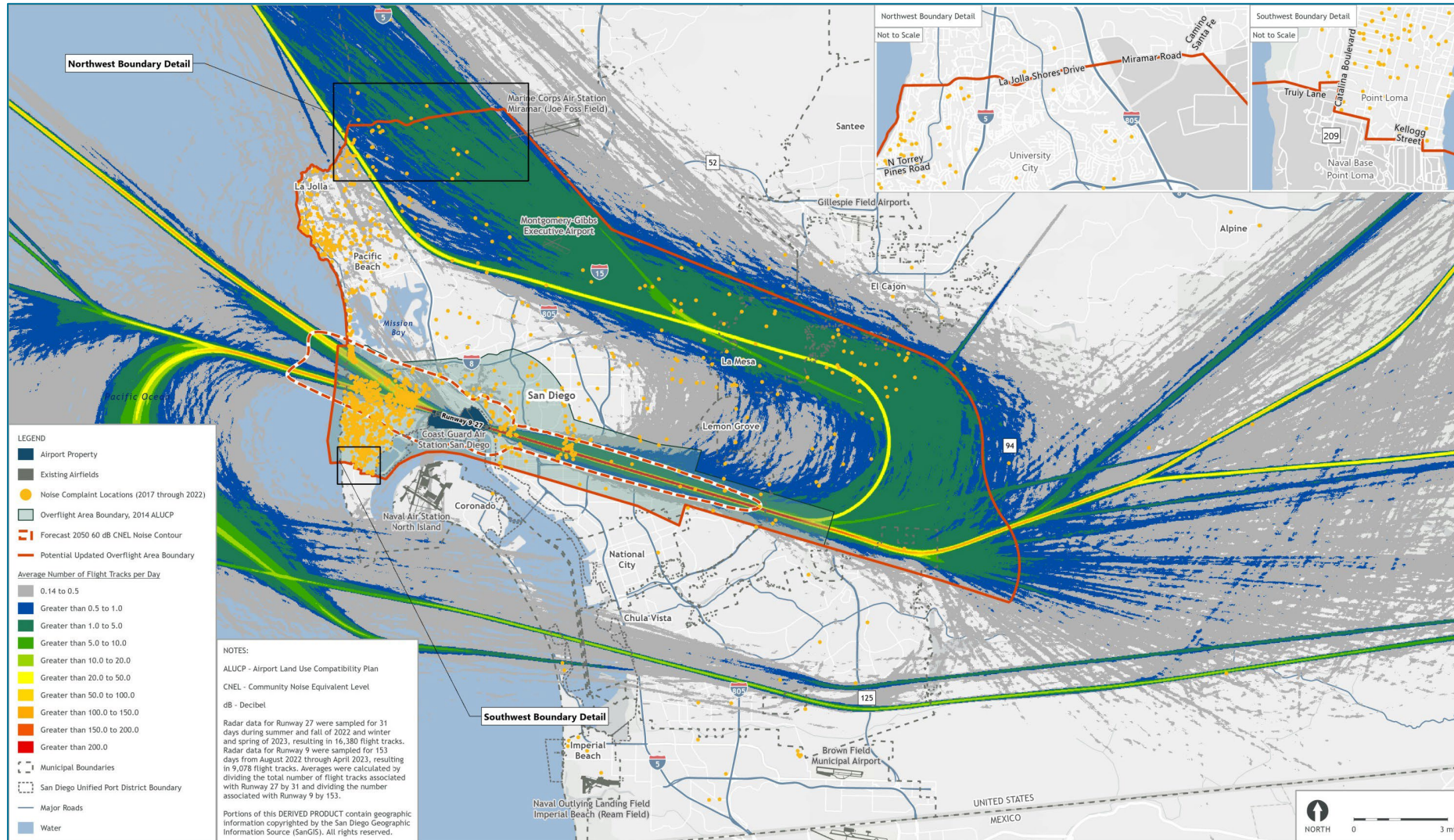
Airspace Compatibility - OEI

- One Engine Inoperative (OEI) Procedures
 - Commercial aircraft takeoffs must ensure obstacle clearance in case of loss of one engine
 - FAA does not assess OEI obstacle clearance in its airspace reviews
- Importance of protecting OEI airspace
 - Penetrations by obstacles can require changes in aircraft, reduced payloads, reduced fuel loads
 - Can jeopardize long-distance, non-stop service (International, Hawaii and East Coast)
 - Potential for adverse impacts to local economy

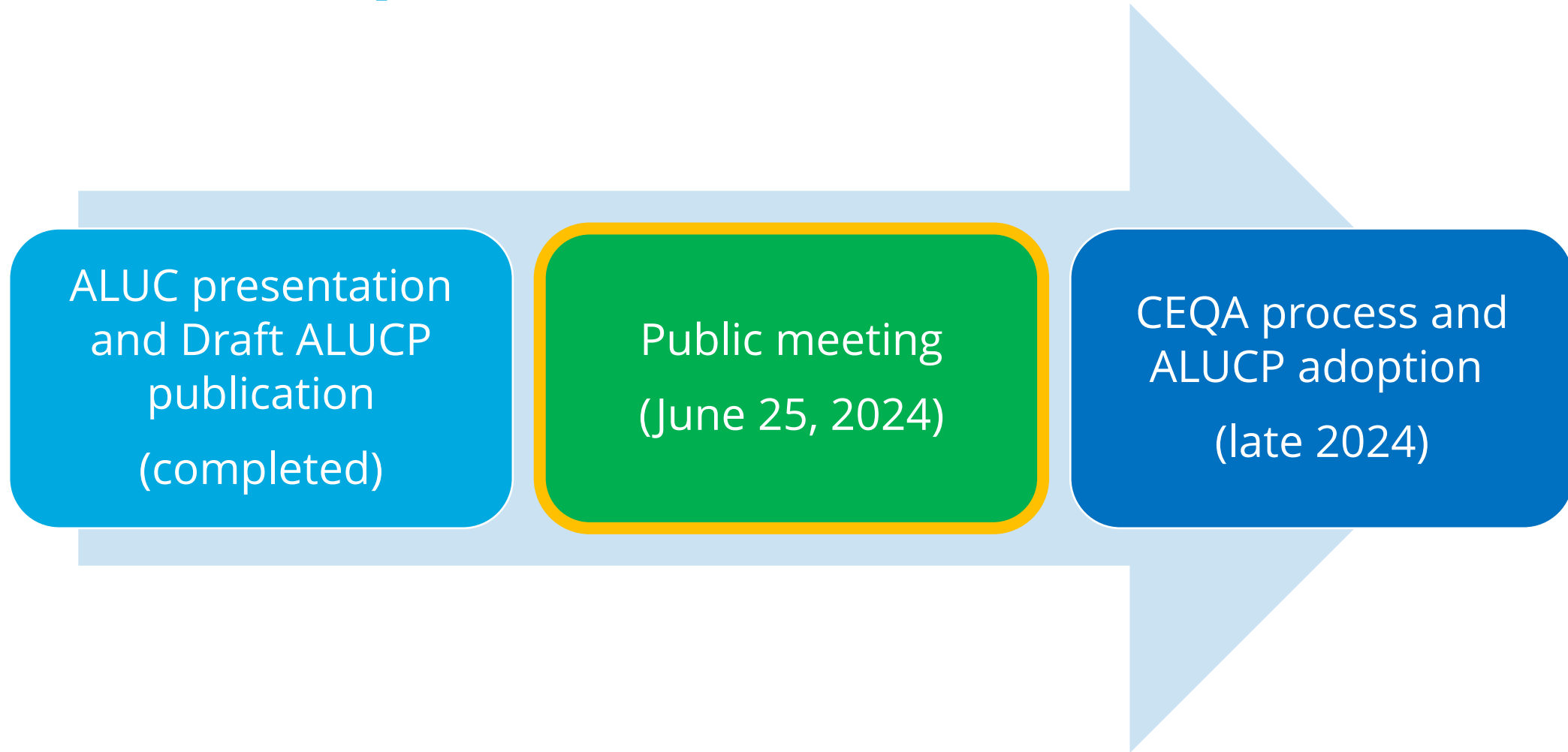
Overflight Notification



Overflight Notification



Next Steps



Draft ALUCP Review

- The Draft ALUCP and appendices are available at san.org/SDIA_ALUCP
- Comments are requested by Wednesday, July 31, 2024
- Comments may be submitted to ALUCPcomments@san.org or
- Mailed to the San Diego County Regional Airport Authority, ATTN: ALUC, P.O. Box 82776, San Diego, CA 92138

Thank You!

Comments & Questions:
ALUCPcomments@san.org

Review Document:
san.org/SDIA_ALUCP

T1 Parking Plaza Opening

Authority Advisory Committee Meeting
July 17, 2024

Brendan Reed
Senior Director of Operational Planning & Readiness



Opening T1 Parking Plaza (Stage 1) Outline

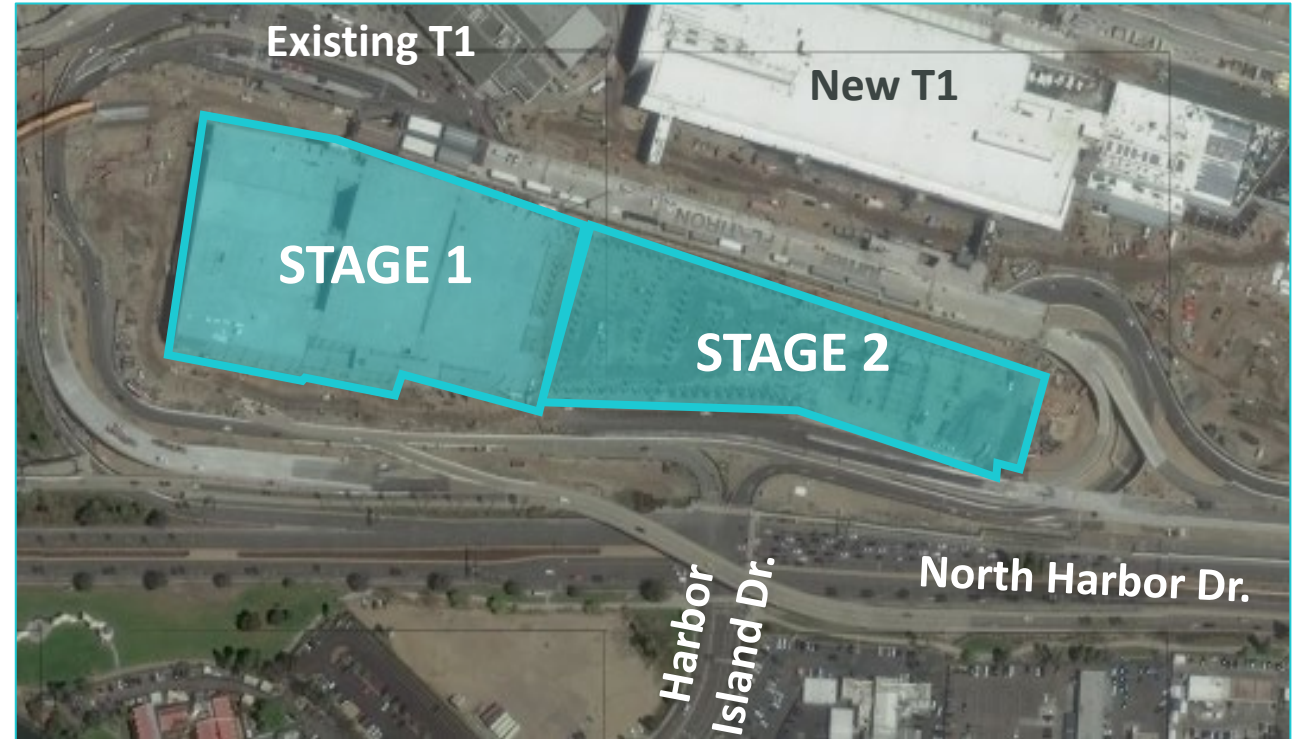
- General Info
- Facility Access & Layout
- Parking Payment Options
- Customer Amenities
- Sustainable Design Features
- Opening Milestones
- Help Spread the Word!



Opening T1 Parking Plaza (Stage 1)

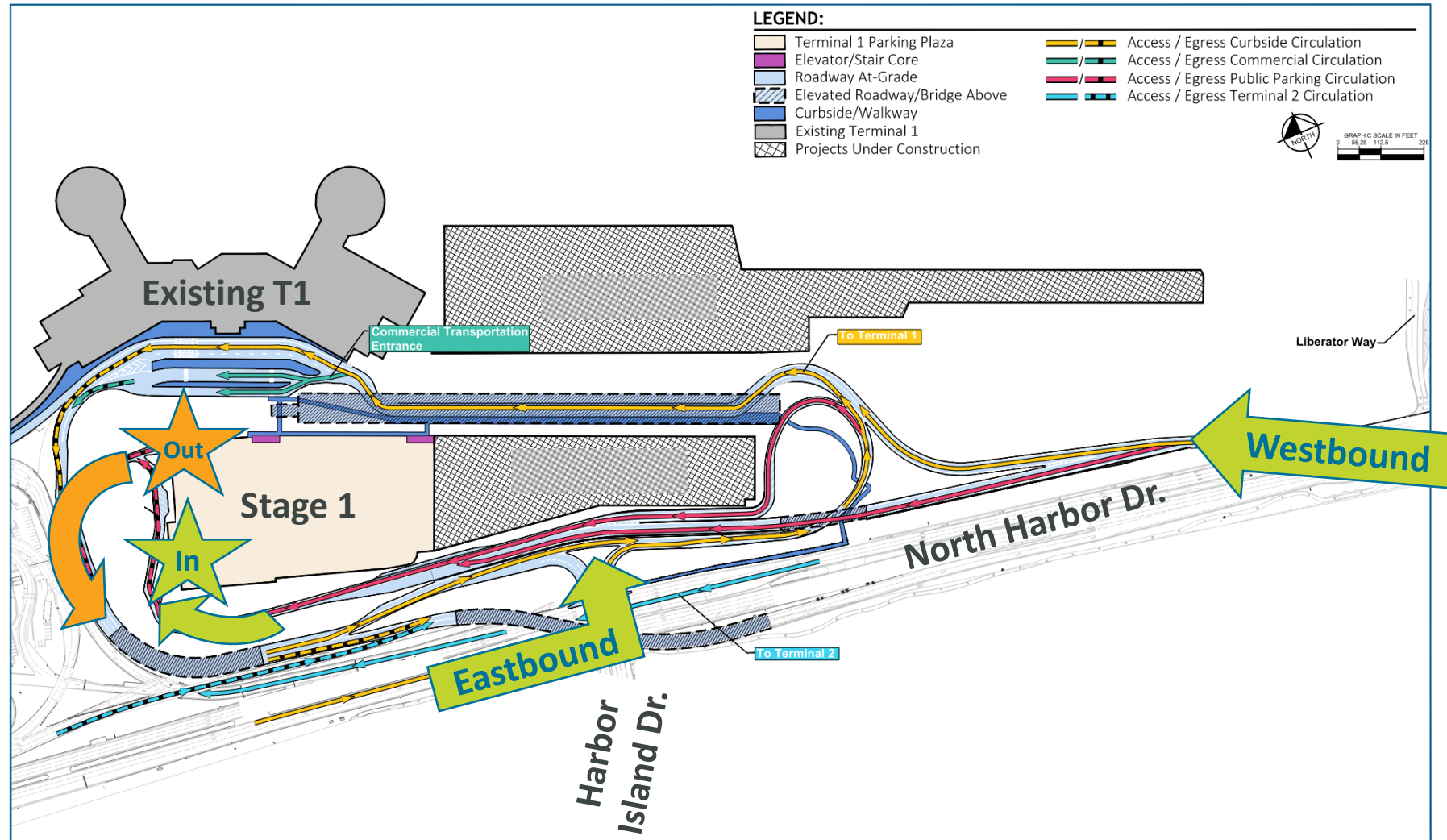
General Info

- Opens late August '24
- 1 Million Square Feet
- 5 Levels with Express Ramps
- 2,834 Total Stalls
- 519 “Clean Vehicle” Stalls
- 65 EV Charging Ports (34 on *Opening Day*)
- 20 Short-Term Parking Stalls



Opening T1 Parking Plaza (Stage 1) Facility Access

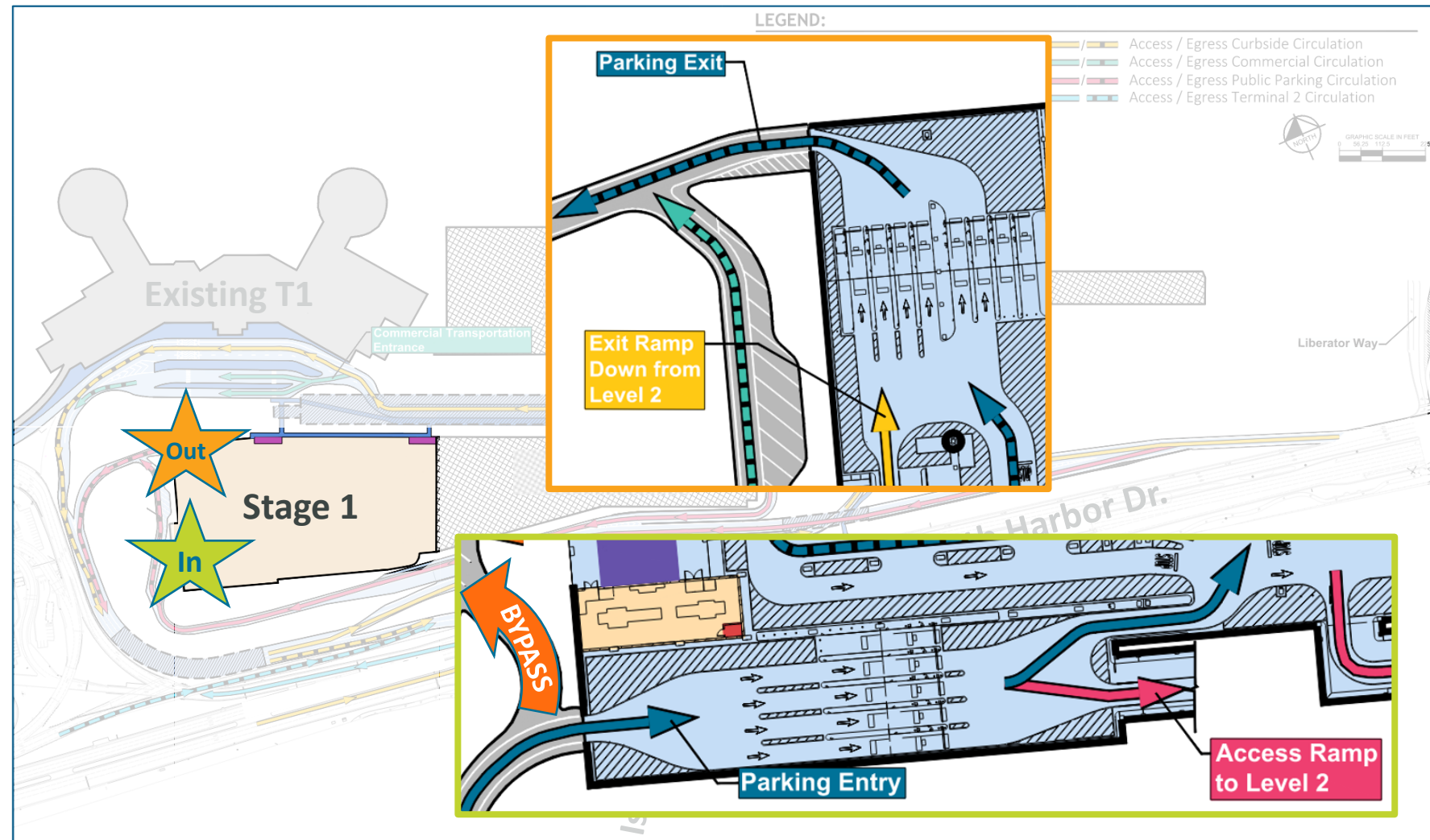
- *Westbound:*
Temporary entry road off North Harbor Dr.
- *Eastbound:*
Entry road at Harbor Island Dr. intersection
- *T1PP Entrance & Exit:*
Both on facility's west side



Opening T1 Parking Plaza (Stage 1)

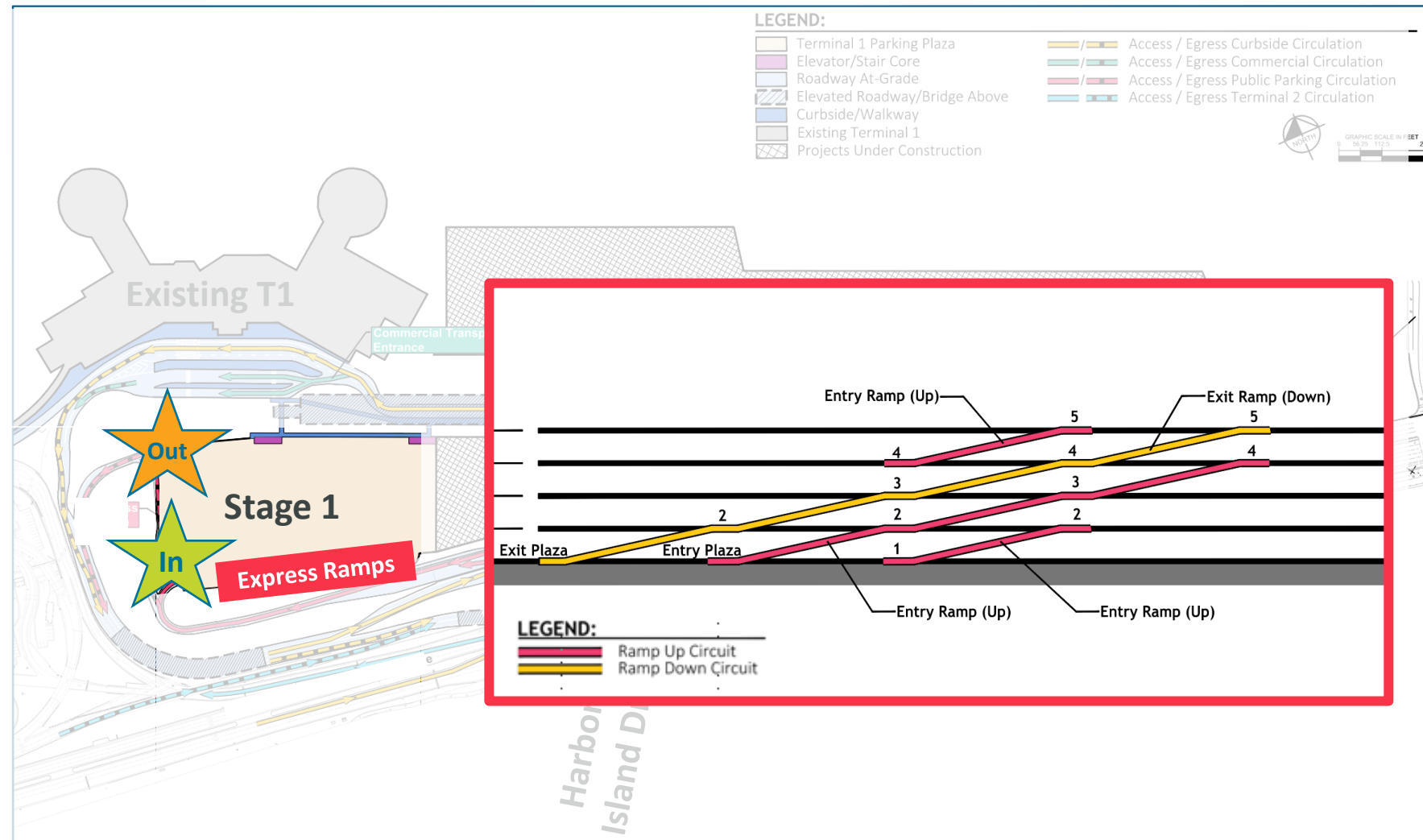
Facility Layout

- **Entrance:**
4 entry lanes
(unstaffed)
- **Exit:**
6 exit lanes
(unstaffed)
- **Height Clearance:**
Level 1 – 9' 6"
Levels 2-5 – 8' 2"
- **Bypass Lane:**
In front of entrance



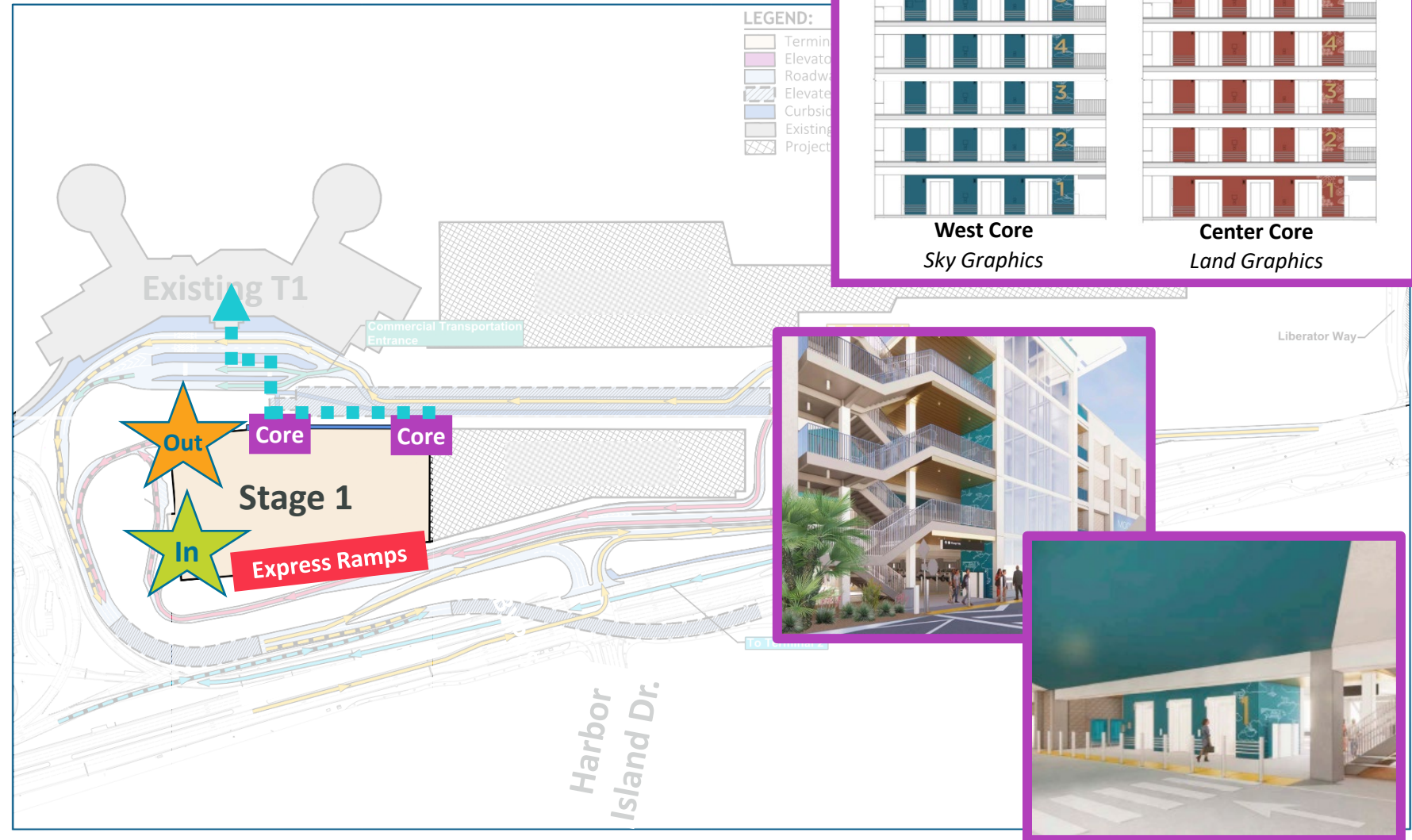
Opening T1 Parking Plaza (Stage 1) Facility Layout

- 4 “Express Ramps” along T1PP’s southside
- 3 ascending ramps & 1 descending ramp
- Creates more efficient vehicle circulation



Opening T1 Parking Plaza (Stage 1) Facility Layout

- 2 “Cores” (elevators & stairs) along northside
- Unique graphics & colors help customers with wayfinding
- Locations align with facility’s lightwells (which also have stairs)
- Short distance to existing T1



Opening T1 Parking Plaza (Stage 1)

Multiple Parking Payment Options

- *Ticket:*
Pulled at entry & used at exit kiosks
Fees paid at pay-on-foot (POF) stations or exit kiosks
- *Credit/Debit Card:*
Same card must be used at entry & exit kiosks
Can also use NFC-enabled devices (ex. Apple Pay)
- *Online Reservations:*
Utilize provided QR code
License plate recognition may also allow entry
- *Parking Cards/Transponders:*
Tap Authority-issued parking cards
Transponders installed on Authority fleet vehicles



No Parking Fee Charged for Vehicles that Enter & Exit within 10 Minutes

Opening T1 Parking Plaza (Stage 1)

Customer Amenities



Vending Machines
at Level 1 Cores



Luggage Carts
Cart Stations near the
West (L1) & Center (L1-5) Cores



Tire Inflation Station
Adjacent to Exit Lanes



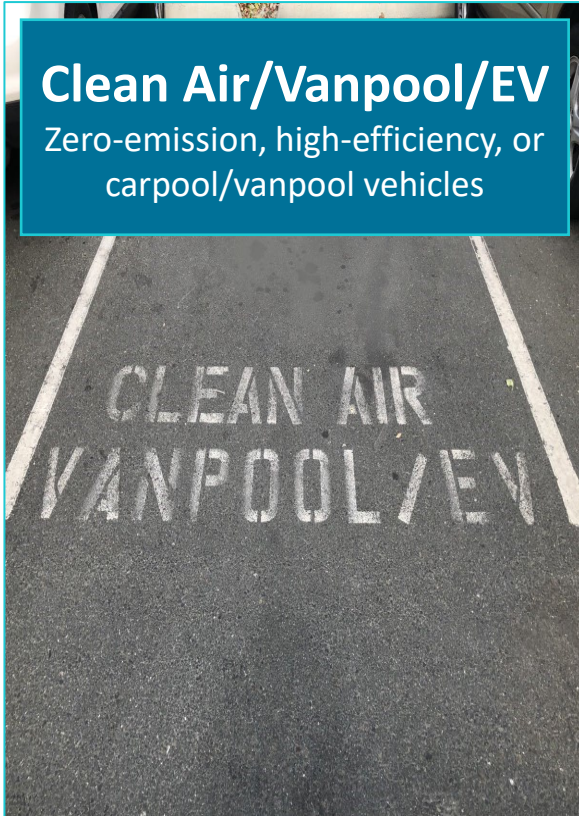
EV Charging Ports
Pay stations at Levels 1-4 Cores
or thru Powerflex App

Opening T1 Parking Plaza (Stage 1)

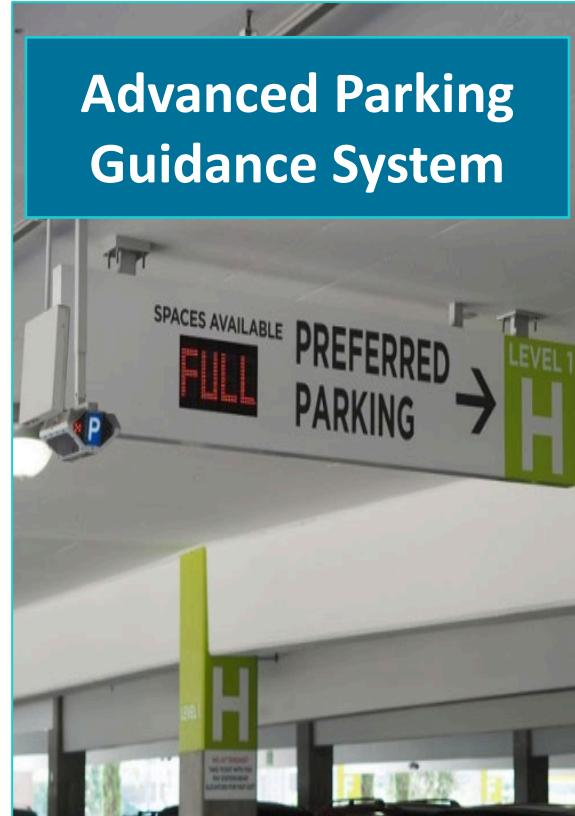
Sustainable Design Features

Clean Air/Vanpool/EV

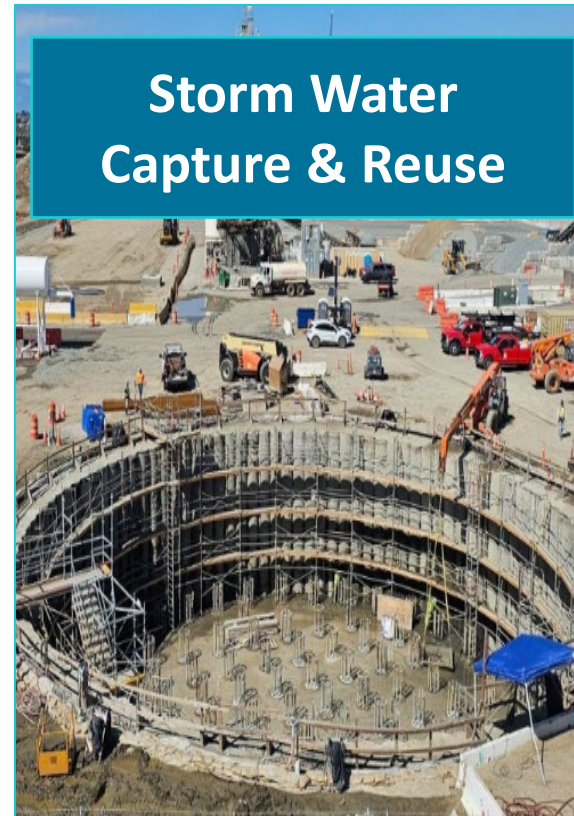
Zero-emission, high-efficiency, or carpool/vanpool vehicles



Advanced Parking Guidance System



Storm Water Capture & Reuse



Sustainability Certification

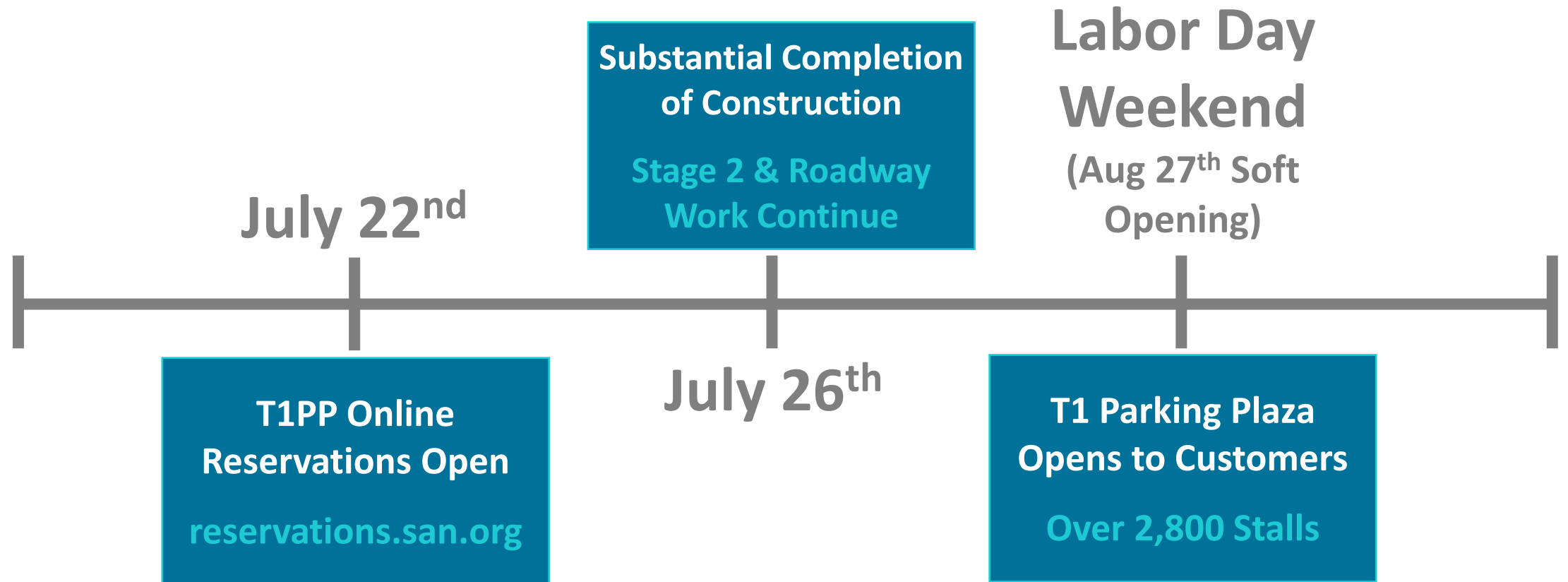


Version 1.0 with Addenda

parksmart.gbci.org

Opening T1 Parking Plaza (Stage 1)

Opening Milestones



Please help spread the word that
by Labor Day weekend...

**SAN WILL HAVE
PLENTY OF CLOSE-IN
PARKING AVAILABLE!!!**



Opening T1 Parking Plaza (Stage 1)

Parking Reservations



Make reservations online
at reservations.san.org



The screenshot shows the San Diego International Airport parking reservation website. At the top, there are navigation links for Login, Register, Manage My Reservation, and Help & FAQs. The main header features the airport logo and the slogan "LET'S GO.". Below this, the user's current reservation details are displayed: ENTRY: Wednesday August 14, 2024 12:00pm EXIT: Thursday August 15, 2024 11:30am, with a "change" button. A search form allows users to specify Entry Date (14 Aug 2024), Entry time (12:00 PM), Exit Date (15 Aug 2024), and Exit time (11:30 AM), with a "Search" button. A progress bar indicates the current step is "Select Dates".

YOUR PARKING OPTIONS Sort by: Transfer Time View: [Grid/List]

Option	Price	Reserve Now
TERMINAL 1 CURBSIDE VALET ✓ Leave your car with one of our fully-insured, professional valet staff and walk straight through to check-in ✓ Your car will be ready for you on your return, just text when you land Transfer Time: 0-3 min, walk Best Seller	\$60.00	Reserve Now
TERMINAL 2 CURBSIDE VALET ✓ Leave your car with one of our fully-insured, professional valet staff and walk straight through to check-in ✓ Your car will be ready for you on your return, just text when you land Transfer Time: 0-3 min, walk	\$60.00	Reserve Now
TERMINAL 2 PARKING PLAZA - 3703 NORTH HARBOR DRIVE ✓ Park in our Terminal 2 Parking Plaza to access both terminals and all airlines. Our Terminal 1 Parking Lot is closed. ✓ Enjoy easy access to the terminal via covered walkway, covered parking, EV charging and AFV parking spaces Transfer Time: 2-12 min, walk	\$38.00	Reserve Now

For more information about the
Terminal 1 Parking Plaza, visit:

www.NewT1.com



Questions?