

QUIETER HOME PROGRAM

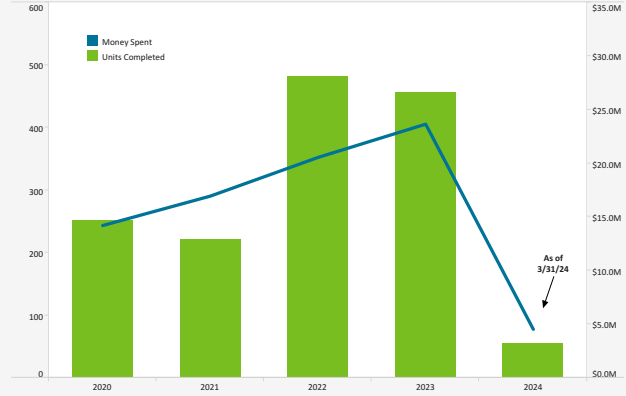
Quieter Home Program As Of: 3/31/2024

Status of Homes	
Added this Month	11
Homes Completed this Month	31
Estimated Homes to Complete in CY 2024	300
Homes on Wait List	408
Total Homes Completed	5,657
Amount Spent on Multi-Family Units (USD) this Month	188,720

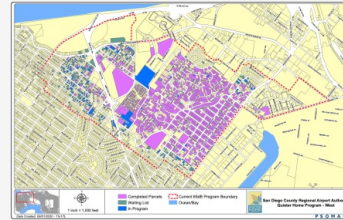
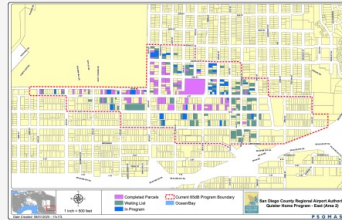
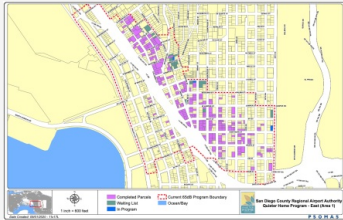
Project	Estimated Construction Start	# Homes
12.4 (QNRP)	In Process	3
12.5 (QNRP)	Winter 2024	3
12.8	In Process	12
12.9	In Process	36
12.10	In Process	35
12.11	In Process	25
12.12	Spring 2024	29
13.1	Summer 2024	30
13.2	Summer 2024	35
13.3	Summer 2024	25
13.4	Fall 2024	24
13.5	Winter 2024	20
13.6	Winter 2025	33
13.7	Winter 2025	27
13.8	Spring 2025	32
13.9	Spring 2025	30
13.10	Summer 2025	28
13.11	Summer 2025	25
13.12	Fall 2025	25

QNRP: Quieter Non-Residential Program

From 2001 – 2009, \$89.8 Million Was Spent To Complete 1,334 Homes



Program Boundary Maps



Data Disclaimer: We do our best to ensure that the data we release is complete, accurate and useful. However, because we do not create the data, and because the processing required to make the data useful is complex, we are not liable for omissions, inaccuracies or changes in the data.

CURFEW VIOLATIONS

Curfew Violations (February - March 2024)

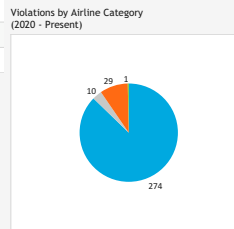
Date, Time	Airline	Aircraft Type	Status
2/8/2024, 11:32 PM	American Airlines	B738	Not Fined
2/8/2024, 11:52 PM	jetBlue Airways	A321	Not Fined
2/8/2024, 11:54 PM	American Airlines	B738	Not Fined
2/9/2024, 12:19 AM	United Airlines	B752	Not Fined
2/19/2024, 01:10 AM	SkyWest Airlines	E75L	FINED - \$8,000
3/13/2024, 12:04 AM	SkyWest Airlines	E75L	Pending Review
3/15/2024, 12:36 AM	jetBlue Airways	A321	Pending Review
3/21/2024, 11:50 PM	Alaska Airlines	B39M	Pending Review
3/24/2024, 12:19 AM	jetBlue Airways	A321	Pending Review
3/25/2024, 04:05 AM	Alliant Air	A319	Pending Review
3/30/2024, 11:30 PM	American Airlines	B38M	Pending Review

Noise Curfew Violations: Any aircraft that departs after 11:30 p.m. and before 6:30 a.m. is subject to a penalty.

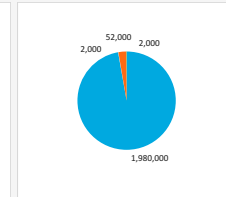
Annual Violations and Penalties Assessed (Year-to-Date)

Year	Total Violations	Fines Assessed
2020	18	\$16,000
2021	52	\$204,000
2022	89	\$804,000
2023	141	\$1,004,000
2024	15	\$10,000

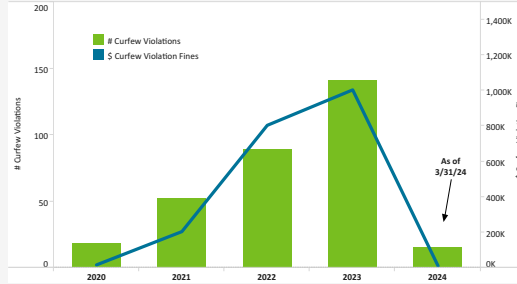
Violations by Airline Category (2020 - Present)



Fines Assessed by Airline Category (2020 - Present)



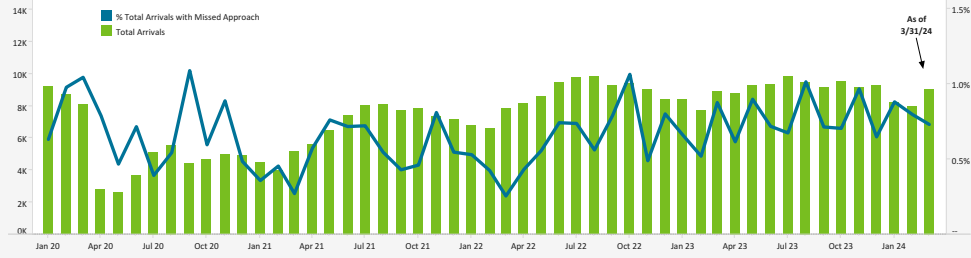
Curfew Violations and Penalties Assessed (by Year)



Airline Category	# Curfew Violations	\$ Curfew Violation Fines
A - Air	274	\$1,980,000
C - Cargo	10	\$2,000
G - G/A	29	\$52,000
M - Mil	1	\$2,000

MISSED APPROACH STATISTICS

Total Arrivals Compared to (%) of Missed Approaches



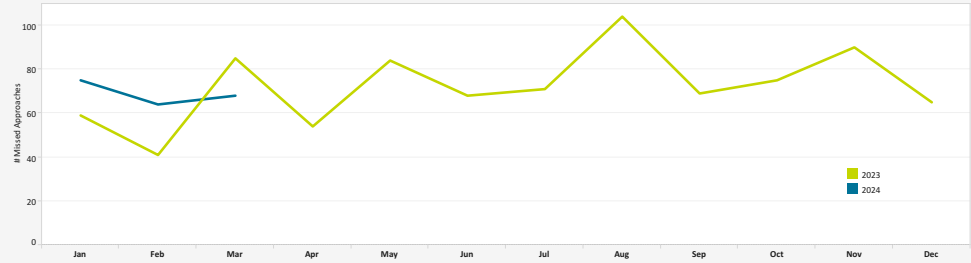
Missed Approaches: A procedure to maintain safety, initiated by the pilot or Air Traffic Control (ATC) for a pilot to abandon the approach to landing.

	2020	2021	2022	2023	2024
% Total Arrivals with Missed Approach	0.7%	0.6%	0.6%	0.8%	0.8%
Total Arrivals	64,576	79,016	102,974	108,560	25,128
Total Missed Approaches	508	470	668	865	207

Missed Approach Location Statistics

	Jan		Feb		Mar			Jan	Feb	Mar
	Day	Night	Day	Night	Day	Night				
Between Noise Dot #1 - Noise Dot #2	3	0	2		1	0	Between 265°-295° Heading (Standard)	47	34	34
Between Noise Dot #2 - JETI	22	1	19		18	1	East of Airport	15	17	19
Between JETI - Noise Dot #3	20	1	13		14	0	Left of 265°	12	9	13
Between Noise Dot #3 - Noise Dot #4	11	0	9		10	0	Right of 295°	1	3	1
Between Noise Dot #4 - Noise Dot #5	1	0	0		2	1				

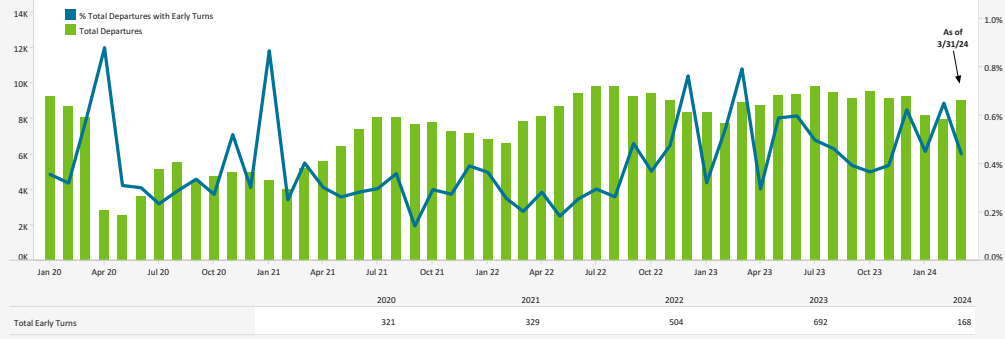
Total Missed Approaches



Data Disclaimer: We do our best to ensure that the data we release is complete, accurate and useful. However, because we do not create the data, and because the processing required to make the data useful is complex, we are not liable for omissions, inaccuracies or changes in the data.

EARLY TURN STATISTICS

Total Departures Compared to (%) of Early Turns



The Airport Authority has defined early turns as those aircraft that turn right prior to FAA Noise Dot #1 at the 295-degree heading or turn left prior to the FAA Noise Dot #3 at the 265-degree heading.

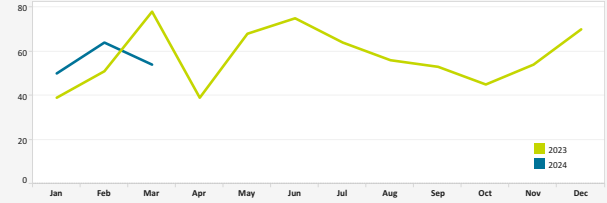
Departure Statistics

	Jan	Feb	Mar
Jets Turning Left	4,067	3,691	4,344
Between Z2000 and Noise Dots	458	505	496
Compliant with Nighttime departure Heading (290°)	288	283	421
Not Nighttime Compliant - Over La Jolla	21	32	28
Not Nighttime Compliant - Straight Out	2	3	3
Not Nighttime Compliant - East	0	21	42

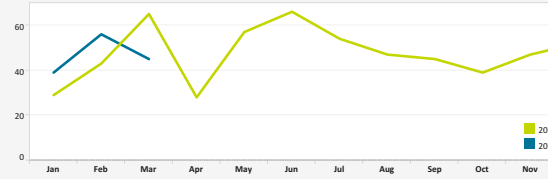
Cause of Early Turns

	Jan	Feb	Mar
Caused by ATC Vectors	41	51	42
Caused by Pilot Deviation	0	2	2
Caused by Weather	9	11	10

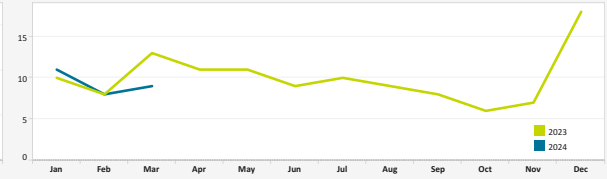
Total Early Turns



Over Point Loma



Over Mission Beach



Early Turns by Operator (March 2024)

Airline	Left Early Turns	Total Operator Departures	% Departures with Left Early Turns
Southwest Airlines	11	5,675	0.2%
SkyWest Airlines	2	1,951	0.1%
Alaska Airlines	6	1,708	0.4%
United Airlines	5	1,648	0.3%
Delta Air Lines	4	1,530	0.3%
American Airlines	5	1,516	0.3%
General Aviation	4	650	0.6%
NetJets	2	337	0.6%
jetBlue Airways	1	299	0.3%
Air Canada	1	66	1.5%
Sun Country Airlines	1	50	2.0%
WestJet	1	46	2.2%
Chrysler Aviation Inc	1	36	2.8%
Atkin Air LLC	1	2	50.0%

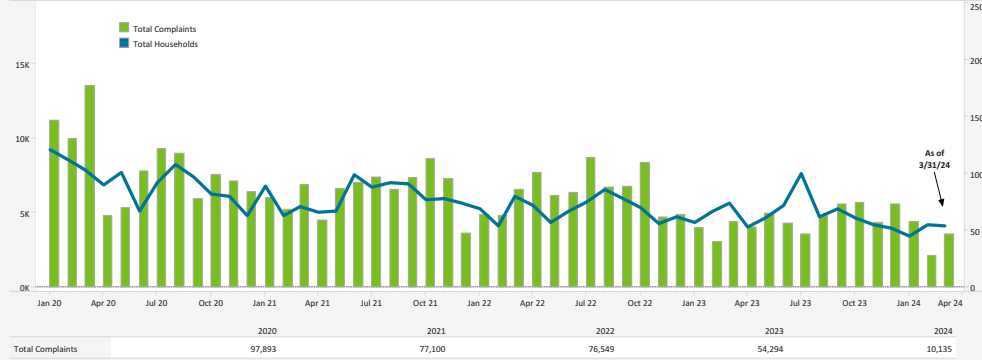
Early Turns by Operator (March 2024)

Airline	Right Early Turns	Total Operator Departures	% Departures with Right Early Turns
Southwest Airlines	1	5,675	0.0%
SkyWest Airlines	1	1,951	0.1%
Alaska Airlines	1	1,708	0.1%
General Aviation	2	650	0.3%
Flexjet	1	166	0.6%
Chrysler Aviation Inc	1	36	2.8%
Marquis Jet Partners Inc	1	6	16.7%
NIMM LLC	1	4	25.0%

Data Disclaimer: We do our best to ensure that the data we release is complete, accurate and useful. However, because we do not create the data, and because the processing required to make the data useful is complex, we are not liable for omissions, inaccuracies or changes in the data.

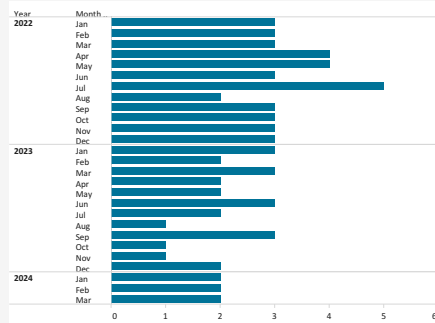
NOISE COMPLAINT STATISTICS

Total Complaints Compared to Total Households

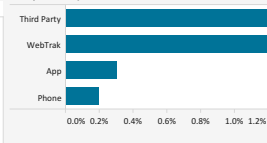


The Authority reports all complaints.

Number of Households with 500+ Complaints per Month



Complaints by Contact Method



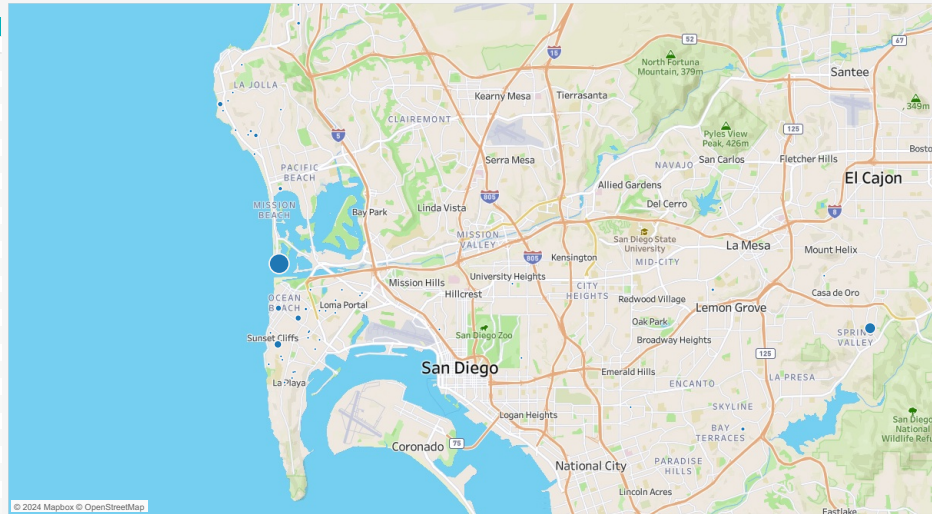
Disturbance Type

Disturbance Type	# Complaints	% Total
Too Loud	3,505	97.6%
Too Low	54	1.5%
Curfew Violation	16	0.4%
Suspected Off Course	12	0.3%
Off Course	2	0.1%
Other	1	0.0%
Overflight	1	0.0%

Number of Complaints by Neighborhood (March 2024)

Neighborhood	Total Complaints	Total Households
Grand Total	3,591	54
Mission Beach	1,976	2
Spring Valley	557	1
Sunset Cliffs	242	3
Point Loma Heights	191	7
Ocean Beach	142	1
Beach Barber Tract	108	4
Muirlands	64	1
Pacific Beach	60	1
Bay Terraces	52	1
Bird Rock	49	4
La Jolla Heights	41	2
La Mesa	35	2
Del Mar	25	1
Wooded Area	15	6
Loma Portal	11	4
Roseville-Fleet Ridge	4	3
Del Mar Heights	3	1
La Jolla Alta	2	1
Lower Hermosa	2	1
Seawatch Community	2	1
South Park	2	1
Valencia Park	2	1
Village of La Jolla	2	1
Bankers Hill	1	1
Casa De Oro-Mount Helix	1	1
Midway District	1	1
University Heights	1	1

Location of Complaints



Data Disclaimer: We do our best to ensure that the data we release is complete, accurate and useful. However, because we do not create the data, and because the processing required to make the data useful is complex, we are not liable for omissions, inaccuracies or changes in the data.