

Capital Improvement Program Oversight Committee and Special Board Meeting Agenda

**Thursday, October 20, 2022
10:00 A.M.**

San Diego International Airport
SDCRAA Administration Building
Third Floor – Board Room
3225 N. Harbor Drive
San Diego, California 92101

Board Members

Gil Cabrera (Chair)
Mary Casillas Salas (Vice Chair)
Catherine Blakespear
Paul McNamara
Paul Robinson
Johanna Schiavoni
James Sly
Nora E. Vargas
Marni von Wilpert

Ex-Officio Board Members

Col. Thomas Bedell
Gustavo Dallarda
Gayle Miller

President/CEO

Kimberly J. Becker

This Agenda contains a brief general description of each item to be considered. The indication of a recommended action does not indicate what action (if any) may be taken. If comments are made to the Committee without prior notice or are not listed on the Agenda, no specific answers or responses should be expected at this meeting pursuant to State law. ***Please note that agenda items may be taken out of order.***

Staff Reports and documentation relating to each item of business on the Agenda are on file in Board Services and are available for public inspection.

***NOTE:** This Committee Meeting also is noticed as a Special Meeting of the Board to (1) foster communication among Board members in compliance with the Brown Act; and (2) preserve the advisory function of the Committee.

Board members who are not members of this Committee may attend and participate in Committee discussions. Since sometimes more than a quorum of the Board may be in attendance, to comply with the Brown Act, this Committee meeting also is noticed as a Special Meeting of the Board.

To preserve the proper function of the Committee, only members officially assigned to this Committee are entitled to vote on any item before the Committee. This Committee only has the power to review items and make recommendations to the Board. Accordingly, this Committee cannot, and will not, take any final action that is binding on the Board or the Authority, even if a quorum of the Board is present.

PLEASE COMPLETE A "REQUEST TO SPEAK" FORM PRIOR TO THE COMMENCEMENT OF THE MEETING AND SUBMIT IT TO THE AUTHORITY CLERK. PLEASE REVIEW THE POLICY FOR PUBLIC PARTICIPATION IN BOARD AND BOARD COMMITTEE MEETINGS (***Public Comment***) ***LOCATED AT THE END OF THE AGENDA.***

Thursday, October 20, 2022

CALL TO ORDER:

PLEDGE OF ALLEGIANCE:

ROLL CALL:

Committee Members: McNamara, Schiavoni, von Wilpert (Chair)

NON-AGENDA PUBLIC COMMENT:

Non-Agenda Public Comment is reserved for members of the public wishing to address the Committee on matters for which another opportunity to speak **is not provided on the Agenda**, and which is within the jurisdiction of the Board. Please submit a completed speaker slip to the Authority Clerk. ***Each individual speaker is limited to three (3) minutes. Applicants, groups and jurisdictions referring items to the Board for action are limited to five (5) minutes.***

Note: Persons wishing to speak on specific items should reserve their comments until the specific item is taken up by the Committee.

NEW BUSINESS:

1. **APPROVAL OF MINUTES:**

RECOMMENDATION: Approve the minutes of the July 21, 2022, regular meeting.

2. **NEW T1 CONSTRUCTION/FINANCE UPDATE:**

(Bob Bolton, Director, Airport Design & Construction and Maya Dayan, Director, Capital Financial Planning and Airline Relations)

3. **NEW T1 OUTREACH UPDATE:**

(Michelle Brega, Senior Director, External Relations; Jon Graves, Director, Marketing, Arts & Air Service Development)

4. **NEW T1 CONCESSION/SMALL BUSINESS UPDATE:**

(Deanna Zachrisson, Director of Revenue Generation and Partnership Development and Craig Ruiz, Manager, Small Business Development)

COMMITTEE MEMBER COMMENTS:

ADJOURNMENT:

Thursday, October 20, 2022

Policy for Public Participation in Board, Airport Land Use Commission (ALUC), and Committee Meetings (Public Comment)

- 1) Persons wishing to address the Board, ALUC, and Committees shall submit a "Request to Speak" form prior to the initiation of the portion of the agenda containing the item to be addressed (e.g., Public Comment and General Items). Failure to submit a form shall not preclude testimony, if permission to address the Board is granted by the Chair.
- 2) The Public Comment Section at the beginning of the agenda is reserved for persons wishing to address the Board, ALUC, and Committees on any matter for which another opportunity to speak is not provided on the Agenda, and on matters that are within the jurisdiction of the Board.
- 3) Persons wishing to speak on specific items listed on the agenda will be afforded an opportunity to speak during the presentation of individual items. Persons wishing to speak on specific items should reserve their comments until the specific item is taken up by the Board, ALUC and Committees.
- 4) If many persons have indicated a desire to address the Board, ALUC and Committees on the same issue, then the Chair may suggest that these persons consolidate their respective testimonies. Testimony by members of the public on any item shall be limited to **three (3) minutes per individual speaker and five (5) minutes for applicants, groups and referring jurisdictions.**
- 5) Pursuant to Authority Policy 1.33 (8), recognized groups must register with the Authority Clerk prior to the meeting.
- 6) After a public hearing or the public comment portion of the meeting has been closed, no person shall address the Board, ALUC, and Committees without first obtaining permission to do so.

Additional Meeting Information

NOTE: This information is available in alternative formats upon request. To request an Agenda in an alternative format, or to request a sign language or oral interpreter, or an Assistive Listening Device (ALD) for the meeting, please telephone the Authority Clerk's Office at (619) 400-2550 at least three (3) working days prior to the meeting to ensure availability.

For your convenience, the agenda is also available to you on our website at www.san.org.

For those planning to attend the Board meeting, parking is available in the public parking lot located directly to the East of the Administration Building across Winship Lane. Bring your ticket to the third-floor receptionist for validation.

You may also reach the SDCRAA Building by using public transit via the San Diego MTS System, Route 992. For route and fare information, please call the San Diego MTS at (619) 233-3004 or 511.

DRAFT
SAN DIEGO COUNTY REGIONAL AIRPORT AUTHORITY
CAPITAL IMPROVEMENT PROGRAM OVERSIGHT COMMITTEE MEETING MINUTES
THURSDAY, JULY 21, 2022
BOARD ROOM

CALL TO ORDER: Chair von Wilpert called the Capital Improvement Program Oversight Committee meeting to order at 10:05 a.m., on Thursday, July 21, 2022, in the Board Room of the San Diego International Airport, Administration Building, 3225 N. Harbor Drive, San Diego, CA 92101.

ROLL CALL:

Committee

Present: Committee Members: McNamara, von Wilpert (Chair)

Absent: Committee Members: Schiavoni

Also Present: Scott Brickner, VP, Treasurer & Chief Financial Officer; Lee Kaminetz, Director, Counsel Services; Sean Harris, Assistant Authority Clerk II; Arely Valenzuela, Assistant Authority Clerk I

NON-AGENDA PUBLIC COMMENT: None.

NEW BUSINESS:

1. APPROVAL OF MINUTES:

RECOMMENDATION: Approve the minutes of the April 21, 2022, special meeting.

ACTION: Moved by Board Member McNamara and seconded by Chair von Wilpert to approve staff's recommendation. Motion carried unanimously.

2. NEW T1 CONSTRUCTION/FINANCE/OUTREACH UPDATE:

Bob Bolton, Director, Airport Design & Construction; Maya Dayan, Director Capital Financial Planning and Airline Relations; and, Michelle Brega, Senior Director, External Communications, provided a presentation on the New Terminal 1 that included, Milestones, NT1 Terminal & Roadways Design Process; NT1 New Administration Building; NT1 Terminal & Roadways Construction Update; NT1 Airside Improvements; the New Terminal 1 costs through May 31, 2022, and cash flow and sources of funds; Messaging Themes; Paid Media Campaign; Ongoing Outreach to Airlines; Newsletter & Text Message Activations; Website Additions; Curbside Volunteers; Community Presentations; and Stakeholder Feedback.

**3. NEW T1 PUBLIC ART CONCEPT PROPOSALS UPDATE:
ACTION: THIS ITEM WAS NOT PRESENTED.**

4. CONCESSIONS AND SMALL BUSINESS DEVELOPMENT UPDATE: DINING AND RETAIL OPPORTUNITIES:

Deanna Zachrisson, Director of Revenue Generation and Partnership Development, provided an update on concessions and smart business development, dining and retail opportunities that included the Current State of Business; Sales per Departing Passenger; New T1 Offerings; T1 Dining & Retail; RFP: Selecting New Concessions; Opportunities for Business; Business Outreach Effort; and Restaurant & Retail Opportunities.

5. NT1 SUSTAINABLE AND RESILIENT DESIGN:

Brendan Reed, Director Environmental Affairs and Planning provided a presentation on the Sustainable & Resilient Design, that included sustainable energy; water stewardship and clean transportation.

COMMITTEE MEMBER COMMENTS: None.

ADJOURNMENT: The meeting was adjourned at 11:40 a.m.

APPROVED BY A MOTION OF THE CAPITAL IMPROVEMENT PROGRAM OVERSIGHT
COMMITTEE THIS 20 DAY OF OCTOBER 2022.

LEE KAMINETZ
DIRECTOR, COUNSEL SERVICES

ATTEST:

SEAN HARRIS
ASSISTANT AUTHORITY CLERK II

Capital Improvement Program Oversight Committee New T1 Update



Cleared for Takeoff...

**Presented by Bob Bolton, Director
Airport Design & Construction**

Agenda

About New Terminal 1 (NT1)

Milestones

NT1 Terminal & Roadways Design Progress

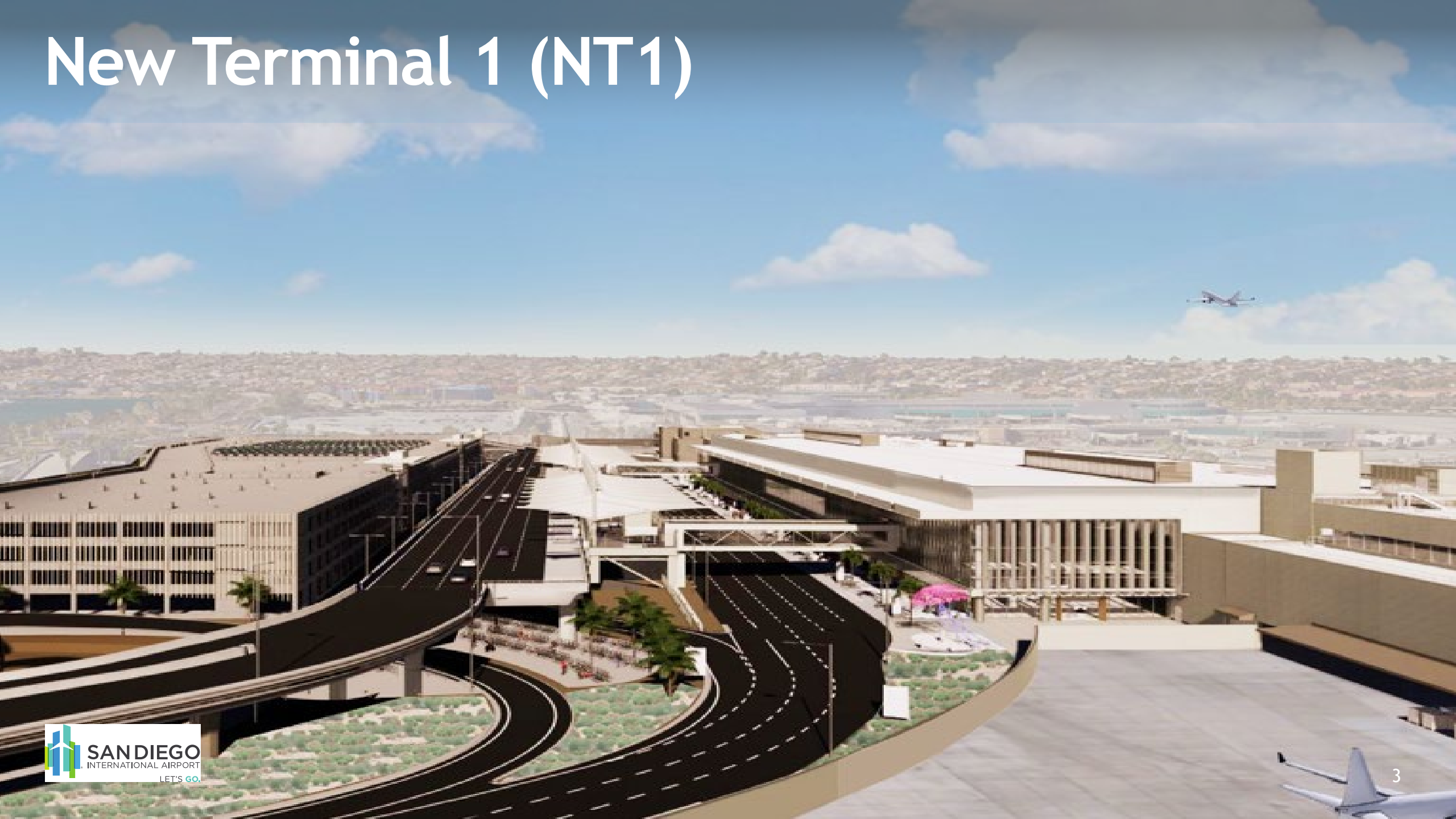
NT1 Terminal & Roadways Construction Update

NT1 New Administration Building

NT1 Airside Improvements

Stay Connected

New Terminal 1 (NT1)



Features

- More than 1 million square feet of terminal space
- Outdoor patio area overlooking San Diego Bay
- Children's play area EV charging infrastructure
- Stormwater capture and reuse system
- Transit Access
- Parking Structure
- 30 Gate Terminal



New T1 Overall Project Scope

NEW
T1



- Terminal & Roadways
- Airside Improvements
- Administration Building
- Future Transit Station

Milestones

NEW
T1

November 1, 2021

- New T1 construction began.

Late 2023

- Earliest opening date for the new Administration Building.

Late 2024

- New T1 parking structure open.

Fall-2025

- Earliest opening date for Phase 1A.

Late 2027

- Earliest opening date for Phase 1B.

Mid-2028

- Earliest completion date for Airside Improvements construction.

NT1 Design Progress Update

| Design Progress Update

Terminal Building

- Completed Review of Terminal 90% Design Deliverable - Oct 2022
- Completed Review of UAHT 30% Design Deliverable- Sept 2022
- Start Basement and Tunnel Excavation - August 2022
- Receive Foundation Permit - July 2022

Landside

- Start Elevated Departure Road (EDR) Construction - Sept 2022
- Completed Relocation of AOA Fence - August 2022

| Design Progress Update - Continued

Parking Plaza

- Completed Review of 60% Design Deliverable - August 2022
- Start City's Building Permit Process - Sept 2022
- Anticipate 90% Design Deliverable - Nov 2022
- Start Construction - Anticipated January 2023

| NT1 Terminal and Roadways

MAJOR MILESTONES ACHIEVED

Entitlements

- Board Approval of Maximum Contract Price (MCP) October 07, 2021
- NEPA Approval - October 22, 2021
- Turnover Existing T1 Gates 1, 1A, 2 and FMD Buildings - November 01, 2021
- Approval from California Coastal Commission for Start of Construction- November 01, 2021

Construction

- Start of Construction November 21, 2021
- Start Terminal Building Foundation Piles June 2022
- Roadway Detour completed and active August 2022
- Existing Roadway Bridge Demolition completed August 2022
- Start Terminal Building Basement and Tunnel Construction August 2022
- Buses and Taxis Relocated to North Side September 2022
- Start Elevated Departure Road (EDR) Construction September 2022

| NT1 Terminal and Roadways

UPCOMING MAJOR MILESTONES

On Airport

- Anticipate Parking Plaza 90% Design Deliverable - November 2022
- Anticipate Terminal Building - Phase 1A 100% Design Deliverable - December 2022
- Anticipate Parking Plaza Deep Foundation Begins - January 2023
- Anticipate Terminal Building Structural Steel Erection Begins - March 2023

Off Airport

- Sewer Construction on North Harbor Drive (near ASB) Begins October 2022 (11:00PM - 5:00AM)
 - All Night Work Coordinated with the City of San Diego (2 Month Duration)

NT1 Design Progress Update Parking Plaza

Core Entrance Material Selection



| White Fin Material Selection



| Lightwell Material Selections



Terminal & Roadways Construction Update

Current Construction Impacts

NEW
T1

Lane Closures:

- Harbor Drive lane closure – October 9 through November 15

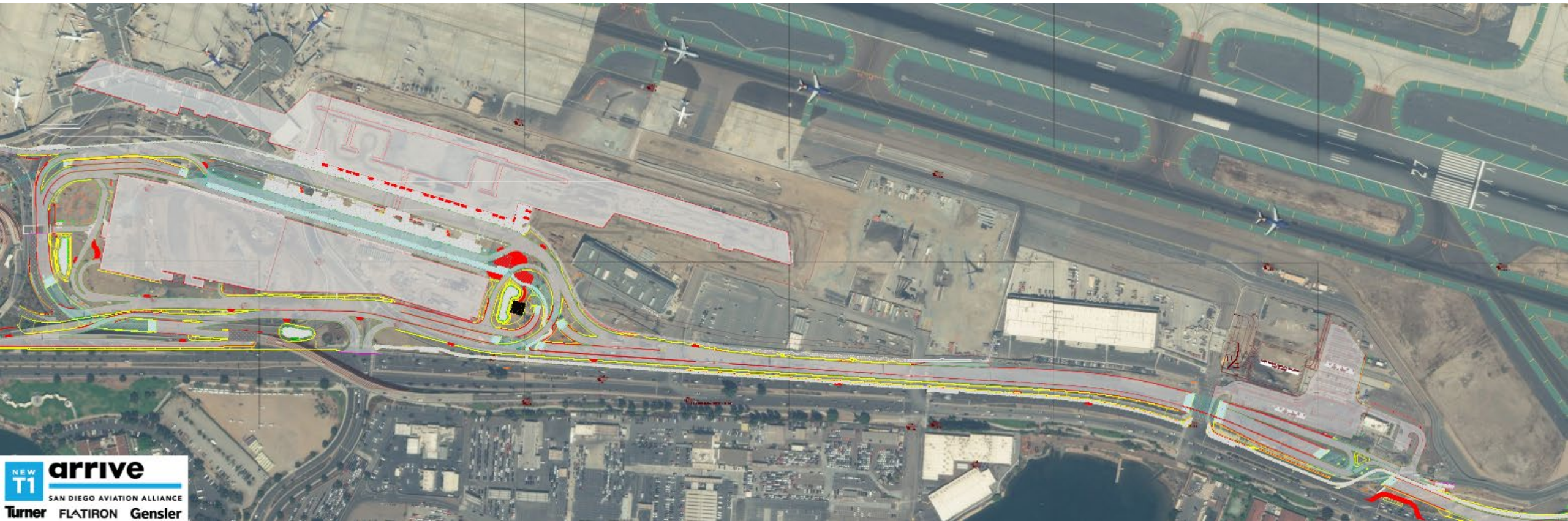
Parking:

- Adjustment of Ground Transportation Plaza for hydronic pipe construction: January 2023

| NT1 Sitework



| NT1 Relationship of Buildings to Sitework

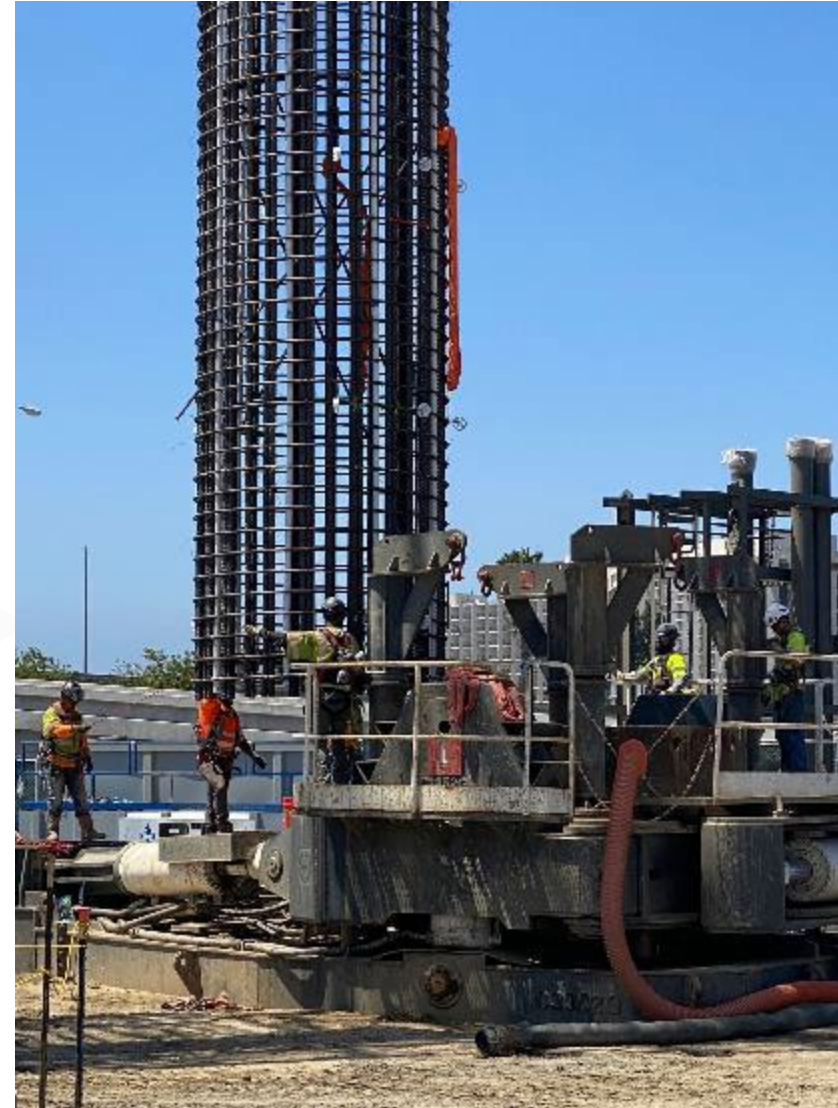


NEW T1 arrive
SAN DIEGO AVIATION ALLIANCE
Turner FLATIRON Gensler

| NT1 Elevated Departures Roadway Piles



| NT1 Elevated Departures Roadway Piles



| NT1 Elevated Departures Roadway Falsework



| NT1 Bridge C/G Abutment - Formwork



| NT1 Bridge C/G Column - Cage and Form



NT1 Culvert Installation



| NT1 Checked Bag Inspection System



NT1 Basement for Checked Bag Inspection System



| NT1 West Baggage Tunnel



| NT1 South Baggage Tunnel - Formwork



NT1 Westward View of Elevated Roadway



NT1 New Administration Building



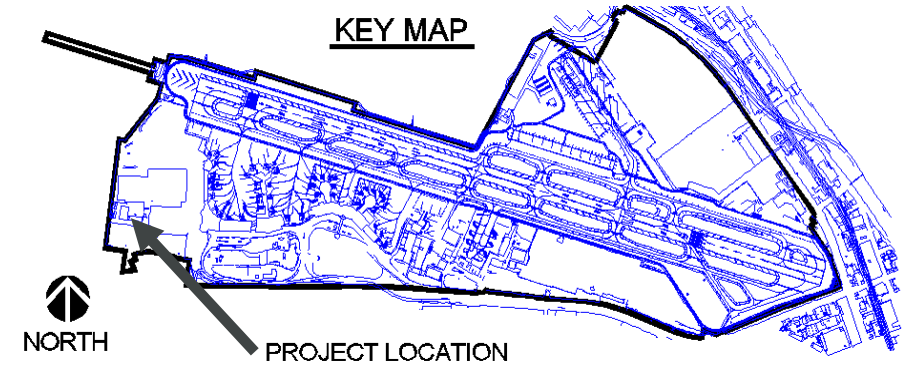
414002: NT1 New Administration Building

Project Manager: Kurt Schultz

Project Sponsor: Angela Shafer-Payne

Project Budget: \$107M

Phase: Construction



Major Milestones

2021

- Board Award/NTP: July 2021
- NEPA/CCC Approvals: October 2021
- 30% Design/Validation Phase: November 2021
- Vacate Old PMC/Site Turn-over: December 2021

2022

- 60% Design Phase: Feb 2022
- Building Construction Start: March 2022
- 90% Design Phase: April 2022
- 100% Design Phase/GMP/Building Permit: July/September 2022

2023

- Substantial Completion: September 2023
- Move-in Complete: November 2023

Construction Update

SUBSTANTIALLY COMPLETED WORK

- Removal of PMC Trailers: January 2022
- Site Delineation, Fencing & Storm Water Pollution Prevention Measures: February 2022
- SDG&E High-Pressure Gas Line & 12kV Electrical Ductbank Relocation: March 2022
- NTC Lot Mobilization, Field Offices, Temp Utilities: April 2022
- Site Grading & Deep Foundation Pilings: April 2022
- Underground Utilities: May 2022
- Footings & Foundations: July 2022
- Slab-on-Grade: August 2022

ONGOING/UPCOMING WORK

- Structural Steel: August - September 2022
- Metal Decking, Slab-on-Deck, Stairs & Fireproofing: September - November 2022

Slab-on-Grade



Structural Steel Erection



NT1 Airside Improvements - Construction Update

411001: NT1 Airside Improvements

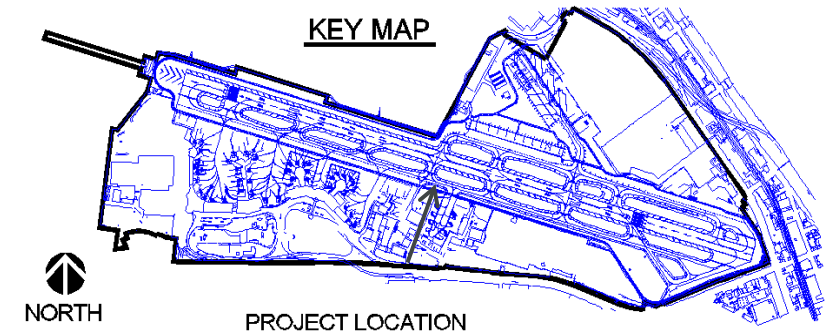
Project Manager: Matt Beyer

Project Sponsor: Angela Shafer-Payne

Project Budget: \$306 M

Phase: Construction

Environmental Entitlements Clearance: Yes

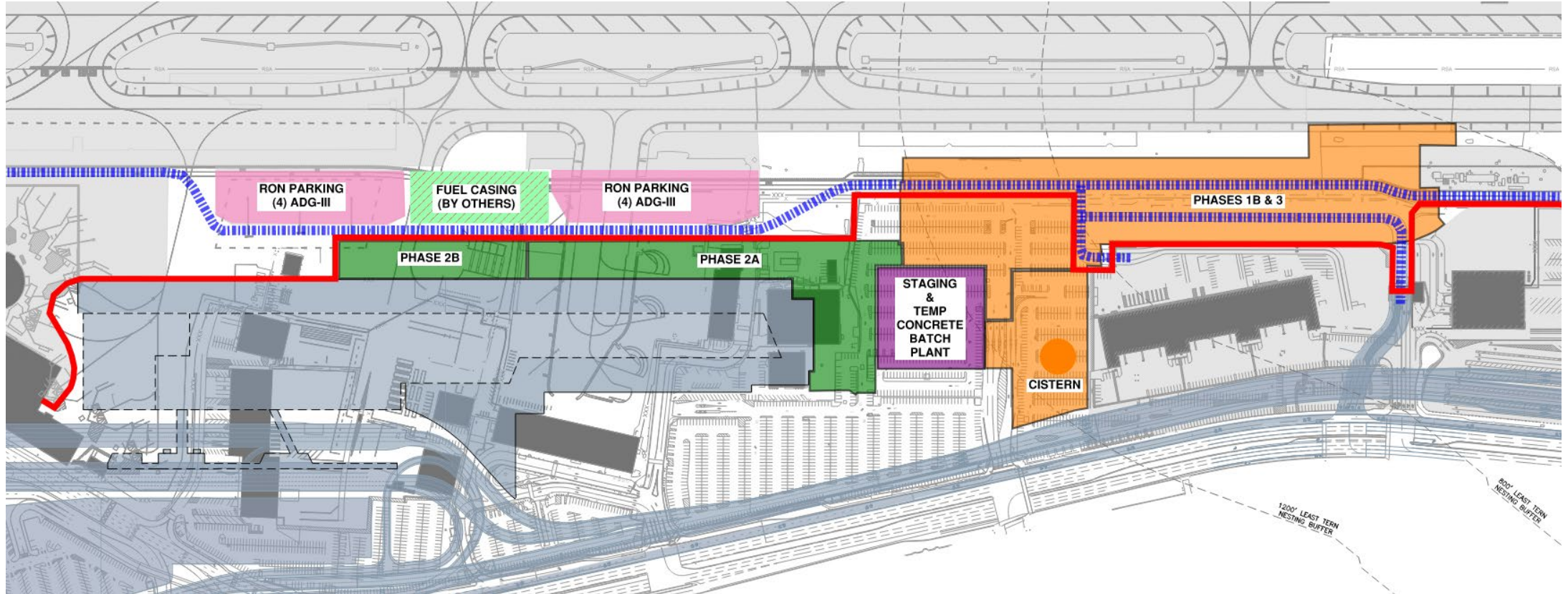


MAJOR MILESTONES ACHIEVED

- Contract Award to Griffith Company: October 7, 2021
- FONSI-ROD Approval: October 22, 2021
- NTP Construction: November 22, 2021
- On-Call Testing & Inspection Agreement Board Approval: January 6, 2022
- Start of Onsite Construction: February 2022
- Relocation of East Ramp RON Positions: May 2022
- Start of Cistern Construction: May 2022

411001: NT1 Airside Improvements

Active/Upcoming Activities



- Storm Drainage Dewatering and Installation
- Environmental Remediation
- 1.5 M Gallon Underground Cistern
- Temp Concrete Batch Plant Installation
- Temp AOA Fence Relocations within Least Tern Nesting Buffer
- Coordination with Hydrant Fueling Projects
- Underground Work within 800' Least Tern Nesting Buffer
- ASB SIDA Modifications

Temporary Concrete Batch Plant Installation

Jul 27, 2022



Jul 28, 2022



Dewatering & Building Foundation Demo



Aug 25, 2022



Temporary AOA Fence Installation



Vehicle Service Road Relocation



Stay Connected

NEW
T1

Email

Go in the Know email
newsletter (opt in)

New T1 Navigator (opt in)

NewT1Info@san.org

Social media

Twitter

@SanDiegoAirport

Facebook

/SanDiegoAirport

Instagram

@SanDiegoAirport

Website

NewT1.com

San.org

Mobile

Opt-in text messaging

Text 36017



A large commercial airplane is parked on a tarmac at sunset. The sun is low on the horizon, creating a warm, golden glow. Another airplane is visible in the sky in the background. The word "Questions?" is overlaid in white text on the left side of the image.

Questions?



SAN DIEGO
INTERNATIONAL AIRPORT

LET'S **GO.**

**CAPITAL IMPROVEMENT PROGRAM
OVERSIGHT COMMITTEE**

FINANCE UPDATE

Presented by:

Maya Dayan

Director, Capital Financial Planning and Airline Relations

October 20, 2022

New T1 Program

Costs through August 31, 2022

(\$ in thousands)

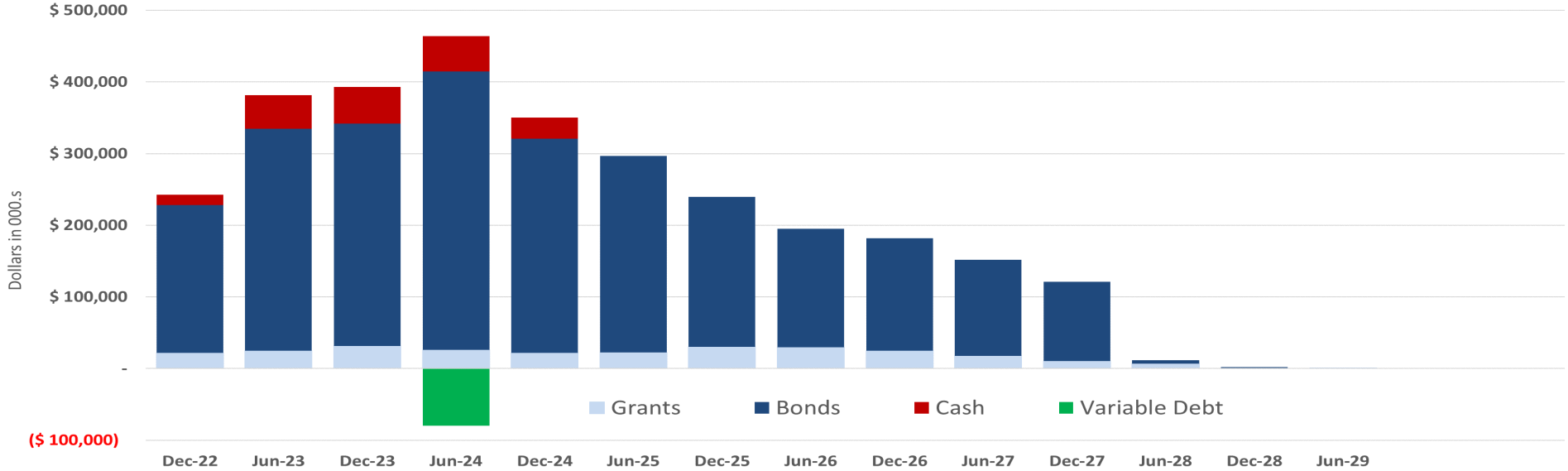
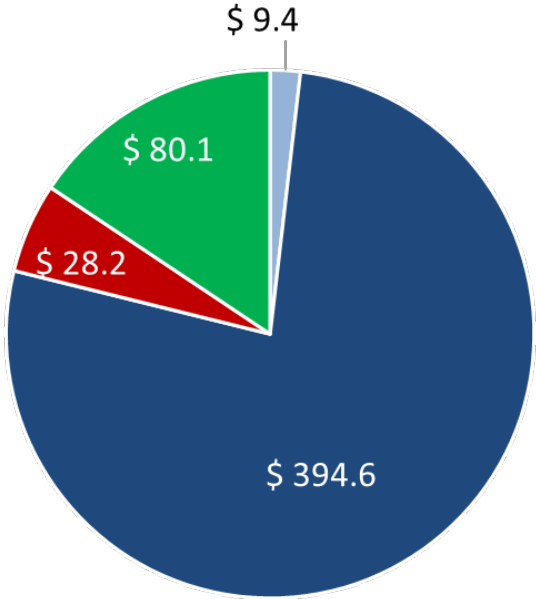
	Board Approved Budget	Approved Budget after contingency transfer	Actual Costs Incurred	Funding Source
TERMINAL & ROADWAY IMPROVEMENTS	\$ 2,813,284	\$ 2,843,258	\$ 418,633	Grants/Bonds/Cash
AIRSIDE IMPROVEMENTS	306,000	306,000	55,341	Grants/Bonds
ADMINISTRATION BUILDING	102,000	106,912	31,948	Bonds
SHUTTLE LOT RELOCATION	15,764	15,764	6,769	Bonds
PROGRAM CONTINGENCY	227,252	192,365		* Bonds
	\$ 3,464,300	\$ 3,464,300	\$ 512,691	

* Program Contingency costs incurred included in projects above

New T1 Program

Cash flow and sources of funds

LTD ACTUAL \$512.4 Million



A low-angle photograph of a modern airport terminal building. The building features a complex, multi-level structure with large concrete overhangs and glass railings. The sky is bright blue with some light clouds. In the bottom left corner, there is a sign for "Ticketing" and "U S Airways". A teal overlay is present in the top left corner, containing the word "Questions?".

Questions?

Ⓞ Ticketing
U S Airways

Revised 10/17/2022

New T1 Outreach Update – Q3 2022

Michelle Brega
Senior Director, External Relations

Jon Graves
Director, Marketing, Arts & Air Service Development

San Diego County Regional Airport Authority

October 20, 2022

NEW T1 PUBLIC OUTREACH GOAL:

Continue to build momentum for the long-awaited New T1, while maintaining a cadence of communication regarding project benefits and construction impacts.

Messaging Arc



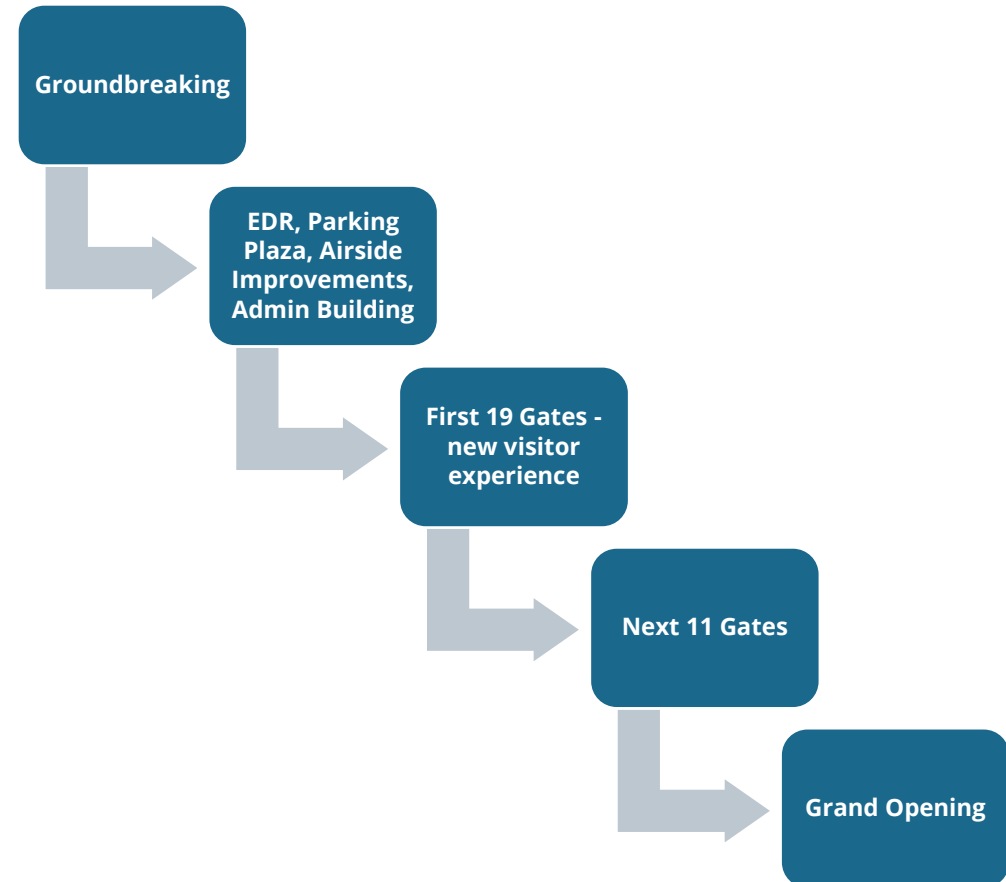
The New T1: Cleared for Takeoff
Groundbreaking – Q4 2021-early 2022

The New T1: Wheels Up
Beginning of Customer Impact - 2022

The New T1: In Flight
Ongoing Project Work – 2023-24

The New T1: On Approach
Nearing Completion – 2025-26

The New T1: Now Arriving
Project Completion – 2027-28



“Wheels Up”

NEW
T1

New T1 Customer Messaging Goals through 2022



Reinforce traveler and community awareness of the New T1 project.



Minimize inconveniences w/ timely updates on travel impacts.



Keep audiences updated on New T1 progress.



Provide customer with options, including parking, transit, drop off, TNC, Taxi.



Support airport revenues.



Messaging Themes

NEW
T1

Plan Ahead & Expect Significant Delays

- **July 30, 2022:**
 - San Diego International Airport Terminal 1 construction and detours due to parking lot flyover bridge demolition.
 - Everyone coming to the airport – whether flying, picking up or dropping off – should prepare for congestion and delays.
 - Passengers are urged to plan ahead for their visit to SAN.

Key Supporting Messages

- **Use public transit to the airport.**
 - Free San Diego Flyer shuttle between the Old Town Transit Center and the airport.
- **Get dropped off or use ride-share.**
 - Have friends or family drop off or pick up.
- **Reserve your on-site parking spot in advance.**
 - Reservations can be made for the Terminal 2 Parking Plaza or valet.
 - Passengers can ride the Terminal Loop Shuttle.

Paid Media Campaign

NEW
T1

Campaign performance Q3

- T1 awareness ads ran across a total of 19 stations
- ~1,459 radio spots
- More than 15.5 million impressions
- Paid social media and digital ads generated 35,522 clicks to NewT1.com
- Digital display CTRs continue to perform well above industry benchmarks
- Radio reached 1,139,528 million San Diego residents

Total Traffic
& Weather Network

Sunny
98.1!
San Diego's Greatest Hits

SAN DIEGO'S
103.7 KSON
NEW COUNTRY

kpbs

Kyxy
96.5

QUÉ BUENA
106.5

AMOR
102.9

Earned Media – Headlines

NEW
T1



FAA Commits \$110 Million to San Diego Airport's Terminal 1 Project



Expect big delays at San Diego International Airport, due to Terminal 1 construction



El aeropuerto de San Diego recibe 110 MDD de subvención para el proyecto de la Terminal 1



Airport looking for retailers, restaurants for new Terminal 1



San Diego airport's Terminal 1 redo gets some help from the FAA — \$24M



San Diego Airport Shares in Nationwide Transportation Grants Totaling \$1 Billion

NEW
T1

SAN DIEGO
INTERNATIONAL AIRPORT
LET'S GO.

Storytelling

- San Diego International Airport YouTube Channel
- Social media (Airport & ...)

San Diego County Regional Airport Authority
6,639 followers
2mo • Edited

Pictures from last night's #NewT1 concessions information session, thanks to everyone who came! The next information session will be held virtually on August 3rd. Gain insight into how your business can be a part of the New T1 concessions program.

Register here -> <https://bit.ly/3cLCWEq>

#businessopportunities #sandiego



San Diego International Airport
Published by Sprout Social @ September 15 at 11:58 AM


SAN is looking for local #SanDiego and regional businesses interested in dining and retail opportunities at #NewT1

Our next information event is on 9/22 in #NationalCity

Join us to connect with prime concessionaires and learn about the recruitment process!

Recruitment begins this Fall 🍂

Register here -> <https://bit.ly/3ey6VAF>



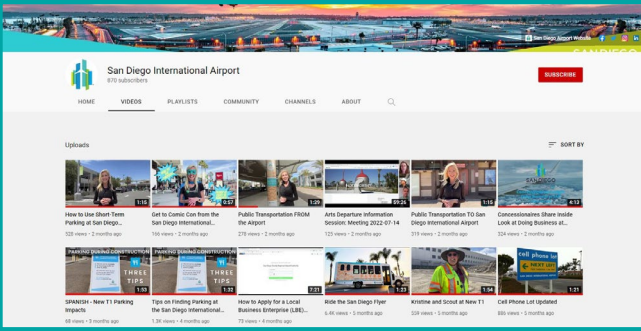
Storytelling

- San Diego International Airport YouTube Channel
- Social media (Airport & Airport Authority)

San Diego International Airport
870 subscribers


HOME VIDEOS PLAYLISTS COMMUNITY CHANNELS ABOUT

Uploads



sandiegoairport

PARKING BRIDGE DEMOLITION: JULY 30, 6 P.M. - JULY 31, 6 A.M.



View insights Boost post

Liked by thegoodtravelerco2 and 110 others

sandiegoairport #SDAirportTravel Travelers coming to SAN this Saturday and Sunday will have a critical U-turn to make at Winship Dr. to access Terminal 1 if driving from Harbor Island Dr. or eastbound on Harbor Dr.

Signage & Video Displays

NEW
T1

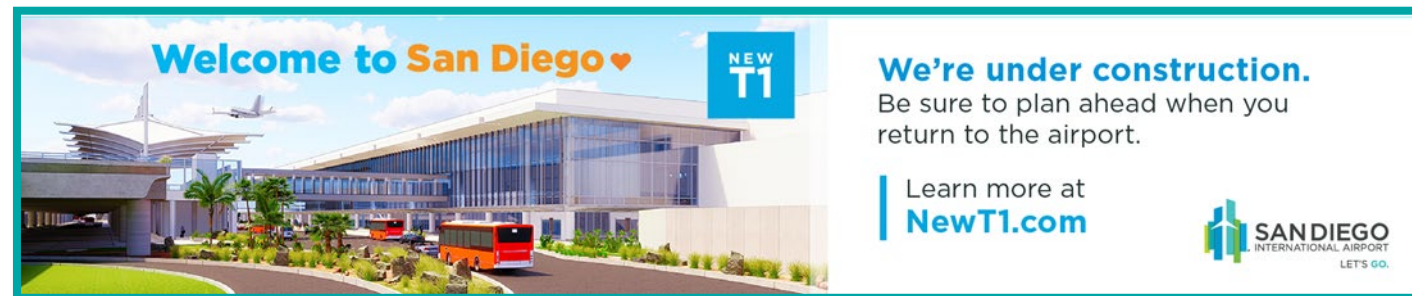
Clear Channel



Fence Line



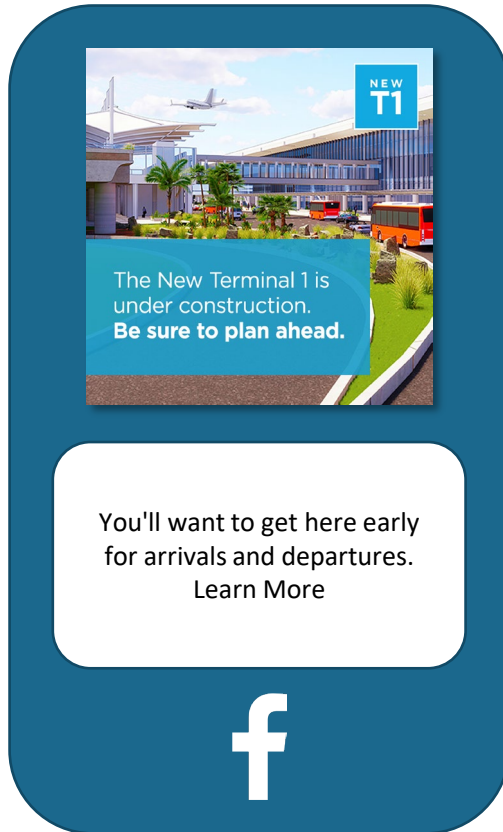
In Terminal



Campaign Creative

NEW
T1

Sample Social Media:

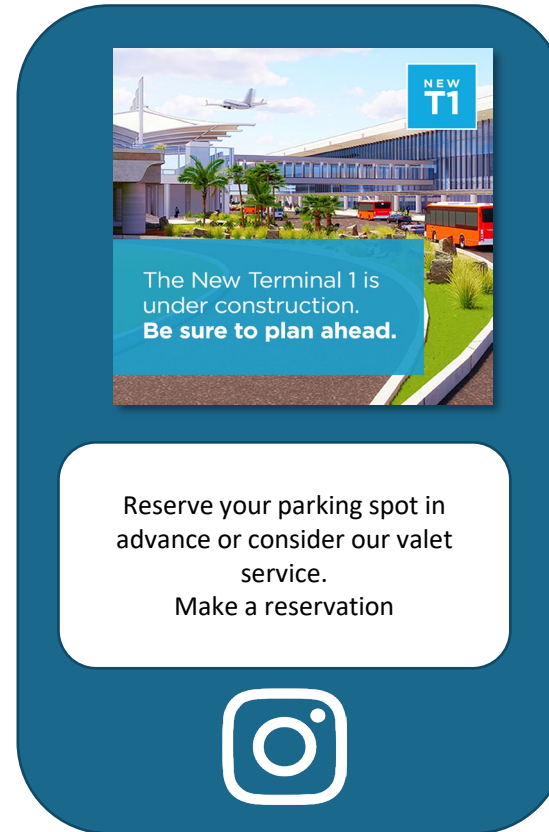


NEW T1

The New Terminal 1 is under construction.
Be sure to plan ahead.

You'll want to get here early for arrivals and departures.
Learn More


f



NEW T1

The New Terminal 1 is under construction.
Be sure to plan ahead.

Reserve your parking spot in advance or consider our valet service.
Make a reservation



NEW T1

The New Terminal 1 is under construction.
Be sure to plan ahead.

The New Terminal 1 is under construction. Be sure to plan ahead and consider taking public transit or the free SD Flyer. For construction updates and to learn more visit www.thenewt1.com



Ongoing Outreach to Airlines

NEW
T1

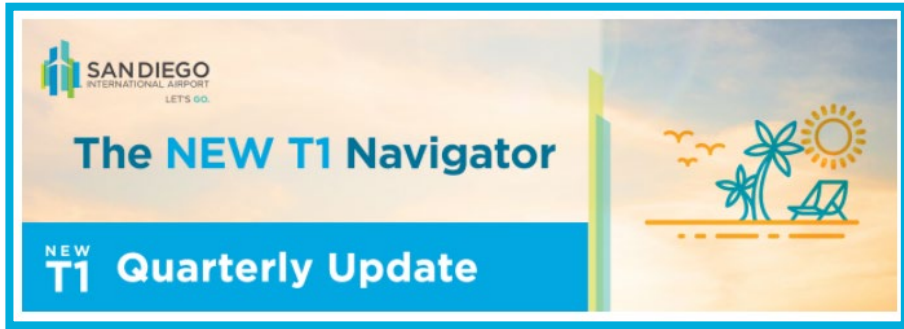
STRATEGY: Continue to partner with airlines to reach customers booking travel out of SAN

- All airlines contacted; 10 airlines actively communicating to their customers
- Impact and timelines communicated to date:
 - Reductions to parking beginning in January
 - Complete loss of T1 parking in July
 - Summer Construction Call to Action: Plan ahead and make a parking reservation
 - Updated Fall messaging to airlines: Construction will continue to impact customers traveling out of both terminals. Plan ahead.
 - Resource information: Parking reservations, short-term parking at SAN and the SD Flyer

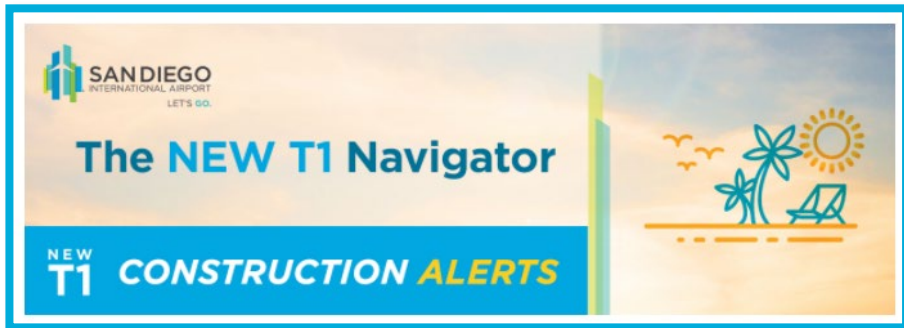


Newsletter & Text Message Activations

NEW
T1



Quarterly newsletter – Sept. 27



Real-time construction alert – July 28

The New T1 has been cleared for takeoff!
Stay in the know with regular updates.

Sign up for email updates here:

*Name

*Email

Sign up for text updates (including traffic alerts) here:

Phone (XXX) XXX-XXXX



*Check this box to agree to receive informational updates from SAN about upcoming changes, closures, and other updates related to the construction of the New Terminal 1 at SAN. Message frequency varies. Message and data rates may apply. Privacy Policy.

SUBMIT

Opt-in page on newT1.com
for both newsletter & text
alerts

SAN DIEGO INTERNATIONAL AIRPORT
LET'S GO.

NEW T1

Fact Sheet

A New Terminal 1 is coming to San Diego International Airport (SAN)! The New T1 will replace the current Terminal 1 with a modern and efficient facility that will improve your airport experience and complete the transformation of San Diego's air transportation gateway.

Project Components

- 1 TERMINALS & ROADWAYS**
Design-Build Firm: Turner-Flatiron, a Joint Venture with Gensler as Lead Architect
Phase 1A: The first 19 gates of the new terminal
Elevated departures roadway
Outdoor check-in pavilions
Airport arrivals roadway
Five-story parking plaza
Phase 1B: Additional 11 gates (for a total of 30)
- 2 AIRSIDE IMPROVEMENTS**
Contractor: Griffith Company
Will allow for more efficient aircraft movements and ground traffic flow for the new terminal
- 3 NEW ADMINISTRATION BUILDING**
Design-Build Firm: Sundt Construction, Inc. with HOK as Lead Architect
New building on the west side of the airport campus for San Diego County Regional Airport Authority staff

Milestones

November 2021 Construction began
Late 2023 New Administration Building scheduled to open
Late 2024 New T1 Parking Plaza scheduled to open
Late 2025 Phase 1A of New T1 schedule to open, including new 19 gates
Late 2027 Phase 1B of New T1 scheduled to open, including final 11 gates
Late 2028 Project completion

Connect with us!
NewT1@san.gov [NewT1@san.gov](https://www.facebook.com/NewT1@san.gov) [NewT1@san.gov](https://www.instagram.com/NewT1@san.gov) [NewT1@san.gov](https://www.linkedin.com/company/new-t1) [NewT1@san.gov](https://www.youtube.com/channel/UCNewT1@san.gov)

NewT1.com

SAN DIEGO INTERNATIONAL AIRPORT
LET'S GO.

NEW T1

Hoja informativa

Llega una nueva Terminal 1 al Aeropuerto Internacional de San Diego (SAN)! La Nueva T1 reemplazará a la Terminal 1 actual por una moderna y eficiente instalación que mejorará su experiencia en el aeropuerto y completará la transformación del portal de transporte aéreo de San Diego.

Componentes del proyecto

- 1 TERMINALES Y CARRETERAS**
Empresa de diseño y construcción: Turner-Flatiron, una empresa conjunta con Gensler como arquitecto principal
Fase 1A: Las primeras 19 puertas de la nueva terminal
Calzada de salidas elevada
Pabellones de facturación al aire libre
Carretera de llegadas al aeropuerto
Estacionamiento de cinco pisos
Fase 1B: 11 puertas adicionales (para un total de 30)
- 2 MEJORAS EN LA ZONA DE OPERACIONES**
Consultor: Compañía Griffith
Permitirá una mayor eficiencia en el traslado de aeronaves y flujo de tráfico terrestre hacia la nueva terminal
- 3 NUEVO EDIFICIO ADMINISTRATIVO**
Empresa de diseño y construcción: Sundt Construction, Inc. con HOK como arquitecto principal
Nuevo edificio administrativo en el lado oeste del campus del aeropuerto para el personal de la Autoridad Regional del Aeropuerto del Condado de San Diego

Hitos

noviembre 2021 Comenzó la construcción
 finales de 2023 Nuevo edificio de administración programado para abrir
 finales de 2024 Nueva T1 edificio de estacionamiento programado para abrir
 finales de 2025 Apertura de la Fase 1A del horario de la Nueva T1, incluidas 19 puertas nuevas
 finales de 2027 Fase 1B de la Nueva T1 programada para abrir, incluidas las 11 puertas finales
 finales de 2028 Finalización del proyecto

Features

- Dual-level roadway and curb front to separate arriving and departing passenger traffic with an elevated departures roadway and curbside check-in
- Preservation of space for a future transit station
- New three-lane on-airport entry roadway
- A pre- and post-security passenger connection to Terminal 2
- New parking plaza will provide up to 5,200 parking spaces
- Expansive security checkpoint with 13 lanes, creating faster passenger throughput
- Outdoor patio area post-security providing views of San Diego Bay and downtown
- Up to two airline or common-use lounges/clubs
- Children's play area

Sustainability features

- Powered by 100% carbon-free electricity
- Charging for more than 250 electric vehicles (EV) with an additional 250 EV-ready spaces
- More than 300 bicycle parking spaces
- Airfield improvements to reduce emissions and aircraft delays
- A multi-use path along North Harbor Drive for bicyclists and pedestrians
- An underground fuel-delivery system to eliminate the need for aircraft fueling trucks
- Expanded stormwater capture and reuse system, including a 1.5-million-gallon underground cistern
- All-electric shuttle service to/from Old Town Transit Center
- Resilient design to address future sea-level rise conditions
- Alignment with City of San Diego's Climate Action Plan
- LEED-Gold certification being pursued

Artist collaboration

- New T1 Façade:** James Carpenter
- Ticketing Lobby:** Nova Jiang
- Outdoor Plaza:** Matthew Mazzota
- Gateway Roadway:** Walter Hood
- Family Play Area:** Donald Lipski
- Post-Security Recomposure Area:** Amy Ellingson
- Food Hall Interactive:** Erwin Redl

TOTAL PROJECT BUDGET

\$3.4 billion
Fully funded by a 10-year Airline Operating and Lease agreement with airline partners

ESTIMATED LOCAL JOB CREATION

15,000 to 20,000 jobs

CONTRACT VALUE DISTRIBUTION GOALS

25% of subcontract value awarded to small businesses/enterprises
80% of subcontract value awarded to local businesses
3% of subcontract value awarded to veteran-owned small businesses

TERMINAL SQUARE FOOTAGE

Approximately 1,160,000 square feet (subject to change) including 90,000 square feet of concession space

Connect with us!
NewT1@san.gov [NewT1@san.gov](https://www.facebook.com/NewT1@san.gov) [NewT1@san.gov](https://www.instagram.com/NewT1@san.gov) [NewT1@san.gov](https://www.linkedin.com/company/new-t1) [NewT1@san.gov](https://www.youtube.com/channel/UCNewT1@san.gov)

NewT1.com

SAN DIEGO INTERNATIONAL AIRPORT
LET'S GO.

NEW T1

Características

- Calzada de dos niveles y frente de bordillo para separar las entradas y salidas del tráfico de pasajeros con salidas elevadas de check-in en carretera y en la acera
- Preservación de espacio para una futura estación de tránsito
- Nueva calzada de entrada al aeropuerto de tres carriles
- Una conexión de pasajeros antes y después del control de seguridad a la Terminal 2
- Nueva plaza de estacionamiento proporcionará hasta 5,200 plazas de estacionamiento
- Puesto de control de seguridad expansivo con 13 carriles, creando rendimiento de pasajeros
- Post-seguridad del área del patio al aire libre que ofrece vistas de la bahía de San Diego y el centro
- Hasta dos salones/clubs de aerolíneas o de uso común
- Área de juegos para niños

Características de sustentabilidad

- Alimentado por electricidad 100% libre de carbono
- Carga para más de 250 vehículos eléctricos (EV) con 250 espacios adicionales listos para vehículos eléctricos
- Más de 300 estacionamientos de bicicletas
- Mejoras en aeródromos para reducir emisiones y retrasos aeronaves
- Un camino de usos múltiples a lo largo de North Harbor Drive para ciclistas y peatones
- Un sistema subterráneo de suministro combustible para eliminar la necesidad de camiones de abastecimiento de aviones
- Sistema ampliado de captura y reutilización de aguas pluviales, incluyendo una cisterna subterránea de 1.5 millones de galones
- Servicio de transporte totalmente eléctrico hacia/desde Old Town Transit Center
- Diseño resistente para hacer frente a futuras condiciones de aumento del nivel del mar
- Alineación con el Plan de Acción Climática de la Ciudad de San Diego
- Certificación LEED-Gold en proceso

Colaboración de artistas

- Nueva Fachada de la T1:** James Carpenter
- Vestíbulo de venta de entradas:** Nova Jiang
- Plaza al aire libre:** Matthew Mazzota
- Carretera de entrada:** Walter Hood
- Área de juegos familiares:** Donald Lipski
- Área de Reconstrucción Post-Seguridad:** Amy Ellingson
- Salón de comidas interactivo:** Erwin Redl

CREACIÓN ESTIMADA DE EMPLEO LOCAL

15,000 a 20,000 puestos de trabajo

VALOR DEL CONTRATO OBJETIVOS DE DISTRIBUCIÓN

25% del valor de subcontratación otorgado a pequeños negocios de empresas
80% del valor de subcontratación otorgado a negocios locales
3% del valor del subcontratación otorgado a pequeñas empresas de veteranos

SUPERFICIE DE LA TERMINAL

Aproximadamente 1,160,000 pies cuadrados (sujeto a cambio) incluyendo 90,000 metros cuadrados de espacio para concesiones

¡Conéctese con nosotros!
NewT1@san.gov [NewT1@san.gov](https://www.facebook.com/NewT1@san.gov) [NewT1@san.gov](https://www.instagram.com/NewT1@san.gov) [NewT1@san.gov](https://www.linkedin.com/company/new-t1) [NewT1@san.gov](https://www.youtube.com/channel/UCNewT1@san.gov)

NewT1.com

SAN DIEGO INTERNATIONAL AIRPORT
LET'S GO.

NEW T1

Hoja informativa

Llega una nueva Terminal 1 al Aeropuerto Internacional de San Diego (SAN)! La Nueva T1 reemplazará a la Terminal 1 actual por una moderna y eficiente instalación que mejorará su experiencia en el aeropuerto y completará la transformación del portal de transporte aéreo de San Diego.

Componentes del proyecto

- 1 TERMINALES Y CARRETERAS**
Empresa de diseño y construcción: Turner-Flatiron, una empresa conjunta con Gensler como arquitecto principal
Fase 1A: Las primeras 19 puertas de la nueva terminal
Calzada de salidas elevada
Pabellones de facturación al aire libre
Carretera de llegadas al aeropuerto
Estacionamiento de cinco pisos
Fase 1B: 11 puertas adicionales (para un total de 30)
- 2 MEJORAS EN LA ZONA DE OPERACIONES**
Consultor: Compañía Griffith
Permitirá una mayor eficiencia en el traslado de aeronaves y flujo de tráfico terrestre hacia la nueva terminal
- 3 NUEVO EDIFICIO ADMINISTRATIVO**
Empresa de diseño y construcción: Sundt Construction, Inc. con HOK como arquitecto principal
Nuevo edificio administrativo en el lado oeste del campus del aeropuerto para el personal de la Autoridad Regional del Aeropuerto del Condado de San Diego

Hitos

noviembre 2021 Comenzó la construcción
 finales de 2023 Nuevo edificio de administración programado para abrir
 finales de 2024 Nueva T1 edificio de estacionamiento programado para abrir
 finales de 2025 Apertura de la Fase 1A del horario de la Nueva T1, incluidas 19 puertas nuevas
 finales de 2027 Fase 1B de la Nueva T1 programada para abrir, incluidas las 11 puertas finales
 finales de 2028 Finalización del proyecto

Features

- Dual-level roadway and curb front to separate arriving and departing passenger traffic with an elevated departures roadway and curbside check-in
- Preservation of space for a future transit station
- New three-lane on-airport entry roadway
- A pre- and post-security passenger connection to Terminal 2
- New parking plaza will provide up to 5,200 parking spaces
- Expansive security checkpoint with 13 lanes, creating faster passenger throughput
- Outdoor patio area post-security providing views of San Diego Bay and downtown
- Up to two airline or common-use lounges/clubs
- Children's play area

Sustainability features

- Powered by 100% carbon-free electricity
- Charging for more than 250 electric vehicles (EV) with an additional 250 EV-ready spaces
- More than 300 bicycle parking spaces
- Airfield improvements to reduce emissions and aircraft delays
- A multi-use path along North Harbor Drive for bicyclists and pedestrians
- An underground fuel-delivery system to eliminate the need for aircraft fueling trucks
- Expanded stormwater capture and reuse system, including a 1.5-million-gallon underground cistern
- All-electric shuttle service to/from Old Town Transit Center
- Resilient design to address future sea-level rise conditions
- Alignment with City of San Diego's Climate Action Plan
- LEED-Gold certification being pursued

Artist collaboration

- New T1 Façade:** James Carpenter
- Ticketing Lobby:** Nova Jiang
- Outdoor Plaza:** Matthew Mazzota
- Gateway Roadway:** Walter Hood
- Family Play Area:** Donald Lipski
- Post-Security Recomposure Area:** Amy Ellingson
- Food Hall Interactive:** Erwin Redl

TOTAL PROJECT BUDGET

\$3.4 billion
Fully funded by a 10-year Airline Operating and Lease agreement with airline partners

ESTIMATED LOCAL JOB CREATION

15,000 to 20,000 jobs

CONTRACT VALUE DISTRIBUTION GOALS

25% of subcontract value awarded to small businesses/enterprises
80% of subcontract value awarded to local businesses
3% of subcontract value awarded to veteran-owned small businesses

TERMINAL SQUARE FOOTAGE

Approximately 1,160,000 square feet (subject to change) including 90,000 square feet of concession space

Connect with us!
NewT1@san.gov [NewT1@san.gov](https://www.facebook.com/NewT1@san.gov) [NewT1@san.gov](https://www.instagram.com/NewT1@san.gov) [NewT1@san.gov](https://www.linkedin.com/company/new-t1) [NewT1@san.gov](https://www.youtube.com/channel/UCNewT1@san.gov)

NewT1.com

Website Fact Sheets

Community Presentations

NEW
T1

Community Organizations

- Midway-Pacific Highway Community Planning Group
- Point Loma Rotary Club
- Clairemont Town Council
- Golden Triangle Rotary
- La Jolla Golden Triangle Rotary Club
- Society of American Military Engineers (SAME)
- Port Commissioners
- La Jolla Merchant's Association

Elected Officials

- State Senator Toni Atkins
- Supervisor Terra Lawson-Remer
- Supervisors Chair Nathan Fletcher
- Mayor Alejandra Sotelo-Solis
- Mayor Racquel Vasquez

Stakeholder Feedback

NEW
T1

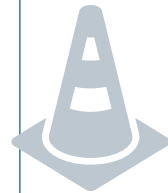
Top Community Questions:



Business opportunities



Parking



General questions
about timing, new
routes with construction



Questions?

ITEM 4 - New T1
Concession/Small
Business Update -
There are no materials
for this item.