

Revised 07/14/2022

Board Members

Gil Cabrera (Chair)
Mary Casillas Salas (Vice Chair)
Catherine Blakespear
Paul Robinson
Paul McNamara
Johanna Schiavoni
James Sly
Nora E. Vargas
Marni von Wilpert

Authority Advisory Committee Meeting Agenda

Wednesday, July 20, 2022

9:00 A.M.

San Diego International Airport
SDCRAA Administration Building
3225 N. Harbor Drive
San Diego, California 92101

Ex-Officio Board Members

Col. Thomas M. Bedell
Gustavo Dallarda
Gayle Miller

President/CEO

Kimberly J. Becker

This meeting of the Authority Advisory Committee of the San Diego County Regional Airport Authority will be conducted pursuant to the provisions of California Assembly Bill 361 which suspends certain requirements of the Ralph M. Brown Act. On July 7, 2022, the San Diego County Regional Airport Authority Board adopted Resolution No. 2022-0064 finding that as a result of the continuing State of Emergency and the fact that local officials have recommended measures to promote social distancing and a finding that meeting in person continues to present imminent risks to the health and safety of attendees, it is in the best interest of the Authority and the public to continue to conduct meetings of the Board's standing committees virtually pursuant to AB 361. Therefore, in the interest of public health, all Committee Members will be participating in the meeting electronically. In accordance with Assembly Bill 361 and Authority Board Resolution No. 2022-0064, there will be no members of the public in attendance at the Committee Meeting. We are providing alternatives to in-person attendance for viewing and participating in the meeting. In lieu of in-person attendance, members of the public may submit their comments in the following manner.

Public Comment during Board/Committee Meetings

If you'd like to speak live during the meeting, please follow these steps to request to speak:

- **Step 1:** Watch the meeting via the live Webcast located at the following link, <https://www.san.org/Airport-Authority/Meetings-Agendas/Advisory-Committee?EntryId=14988>
PLEASE NOTE: There is approximately 20 seconds of lag time between the meeting and the Webcast.
- **Step 2:** When the Chair introduces the item that you would like to comment on, (*or indicates that it is time for Non-Agenda Public Comment*), call into the public comment line by following the following directions :
REMINDER: Please do not call until the item you want to comment on is being discussed.

Wednesday, July 20, 2022

1. Dial **1-619-737-2396**
2. When prompted, input Conference ID: **221 513 092#**
3. You will then hear: ***"If you're the meeting organizer, press star now. You are now joining the meeting."*** Ignore this message.
4. After a few seconds, you will hear: ***"Please wait for the leader to admit you into the meeting, thank you for your patience."*** This is an indication that you are in the waiting room, Authority staff will admit you into the meeting when it is your time to speak.
5. After being admitted into the meeting, your microphone will be live, **please turn off your webcast to avoid feedback.** Staff will then ask you to state your name and begin your comments.

Written Non-Agenda Public comment and/or Public Comment on agenda items may also be submitted to the Authority clerk at clerk@san.org. Comments received no later than 8:30 a.m. on the day of the meeting will be distributed to the Board or Committee and included in the record.

How to Watch the Meeting

You may also view the meeting online at the following link: <https://www.san.org/Airport-Authority/Meetings-Agendas/Advisory-Committee?EntryId=14988>

Requests for Accessibility Modifications or Accommodations

As required by the Americans with Disabilities Act (ADA), requests for agenda information to be made available in alternative formats, and any requests for disability-related modifications or accommodations required to facilitate meeting participation, including requests for alternatives to observing meetings and offering public comment as noted above, may be made by contacting the Authority Clerk at (619) 400-2550 or clerk@san.org. The Authority is committed to resolving accessibility requests swiftly in order to maximize accessibility.

This Agenda contains a brief general description of each item to be considered. The indication of a recommended action does not indicate what action (if any) may be taken. ***Please note that agenda items may be taken out of order.*** If comments are made to the Committee without prior notice or are not listed on the Agenda, no specific answers or responses should be expected at this meeting pursuant to State law.

Staff Reports and documentation relating to each item of business on the Agenda are on file in Board Services and are available for public inspection

Note: Pursuant to Authority Code Section 2.15, all Lobbyists shall register as an Authority Lobbyist with the Authority Clerk within ten (10) days of qualifying as a lobbyist. A qualifying lobbyist is any individual who receives \$100 or more in any calendar month to lobby any Board Member or employee of the Authority for the purpose of influencing any action of the Authority. To obtain Lobbyist Registration Statement Forms, contact the Board Services/Authority Clerk Department.

Wednesday, July 20, 2022

CALL TO ORDER:

ROLL CALL:

Committee Members: Oris Dunham, Michael DiGirolamo, Christiana Debenedict, Deanna Spehn, Jeffrey Gattas, Carol Kim, Nikia Clarke, James O'Callaghan, Jaymie Bradford, Christie Marcella, Bill Sandke, Robert Calix, Haney Hong, Kerri Kapich, Brigitte Browning, Ann Fox, Jim Gruny, Gita Murthy, Brittany Applestein Syz

CHAIR'S COMMENTS:

NEW BUSINESS:

- 1. NEW T1 UPDATE:**
Bob Bolton, Director, Airport Design & Construction
- 2. NEW T1 OUTREACH UPDATE:**
Michelle Brega, Senior Director, External Relations
- 3. NEW T1 PUBLIC ART CONCEPT PROPOSALS:**
Chris Chalupsky, Senior Manager, Arts Program
- 4. CONCESSION AND SMALL BUSINESS DEVELOPMENT UPDATE: DINING & RETAIL OPPORTUNITIES.**
Deanna Zachrisson, Director, Revenue Generation and Partnership Development and Maria Quiroz, Interim Manager, Small Business Development
- 5. NT1 SUSTAINABLE & RESILIENT DESIGN:**
Brendan Reed, Director, Environmental Affairs and Planning

NON-AGENDA PUBLIC COMMENT:

Non-Agenda Public Comment is reserved for members of the public wishing to address the Committee on matters for which another opportunity to speak **is not provided on the Agenda**, and which is within the jurisdiction of the Board. Please submit a completed speaker slip to the Authority Clerk. ***Each individual speaker is limited to three (3) minutes. Applicants, groups and jurisdictions referring items to the Board for action are limited to five (5) minutes.***

Note: Persons wishing to speak on specific items should reserve their comments until the specific item is taken up by the Committee.

COMMITTEE MEMBER COMMENTS:

ADJOURNMENT:

Wednesday, July 20, 2022

Policy for Public Participation in Board, Airport Land Use Commission (ALUC), and Committee Meetings (Public Comment)

- 1) Persons wishing to address the Board, ALUC, and Committees shall submit an email to the Clerk at clerk@san.org prior to the initiation of the portion of the agenda containing the item to be addressed (e.g., Public Comment and General Items). Failure to submit an email shall not preclude testimony, if permission to address the Board is granted by the Chair.
- 2) The Public Comment Section at the beginning of the agenda is reserved for persons wishing to address the Board, ALUC, and Committees on any matter for which another opportunity to speak is not provided on the Agenda, and on matters that are within the jurisdiction of the Board.
- 3) Persons wishing to speak on specific items listed on the agenda will be afforded an opportunity to speak during the presentation of individual items. Persons wishing to speak on specific items should reserve their comments until the specific item is taken up by the Board, ALUC and Committees.
- 4) If many persons have indicated a desire to address the Board, ALUC and Committees on the same issue, then the Chair may suggest that these persons consolidate their respective testimonies. Testimony by members of the public on any item shall be limited to **three (3) minutes per individual speaker and five (5) minutes for applicants, groups and referring jurisdictions.**
- 5) Pursuant to Authority Policy 1.33 (8), recognized groups must register with the Authority Clerk prior to the meeting.

After a public hearing or the public comment portion of the meeting has been closed, no person shall address the Board, ALUC, and Committees without first obtaining permission to do so.

Additional Meeting Information

NOTE: This information is available in alternative formats upon request. To request an Agenda in an alternative format, or to request a sign language or oral interpreter, or an Assistive Listening Device (ALD) for the meeting, please telephone the Authority Clerk's Office at (619) 400-2550 at least three (3) working days prior to the meeting to ensure availability.

For your convenience, the agenda is also available to you on our website at www.san.org.

For those planning to attend the Board meeting, parking is available in the public parking lot located directly to the East of the Administration Building, across Winship Lane. Bring your ticket to the third-floor receptionist for validation.

You may also reach the SDCRAA Building by using public transit via the San Diego MTS System, Route 992. For route and fare information, please call the San Diego MTS at (619) 233-3004 or 511.

Authority Advisory Committee New T1 Update

Item 1

Revised 07/15/2022

NEW
T1



Cleared for Takeoff...

Presented by Bob Bolton, Director
Airport Design & Construction

Agenda

About New Terminal 1 (NT1)

Milestones

NT1 Terminal & Roadways Design Progress

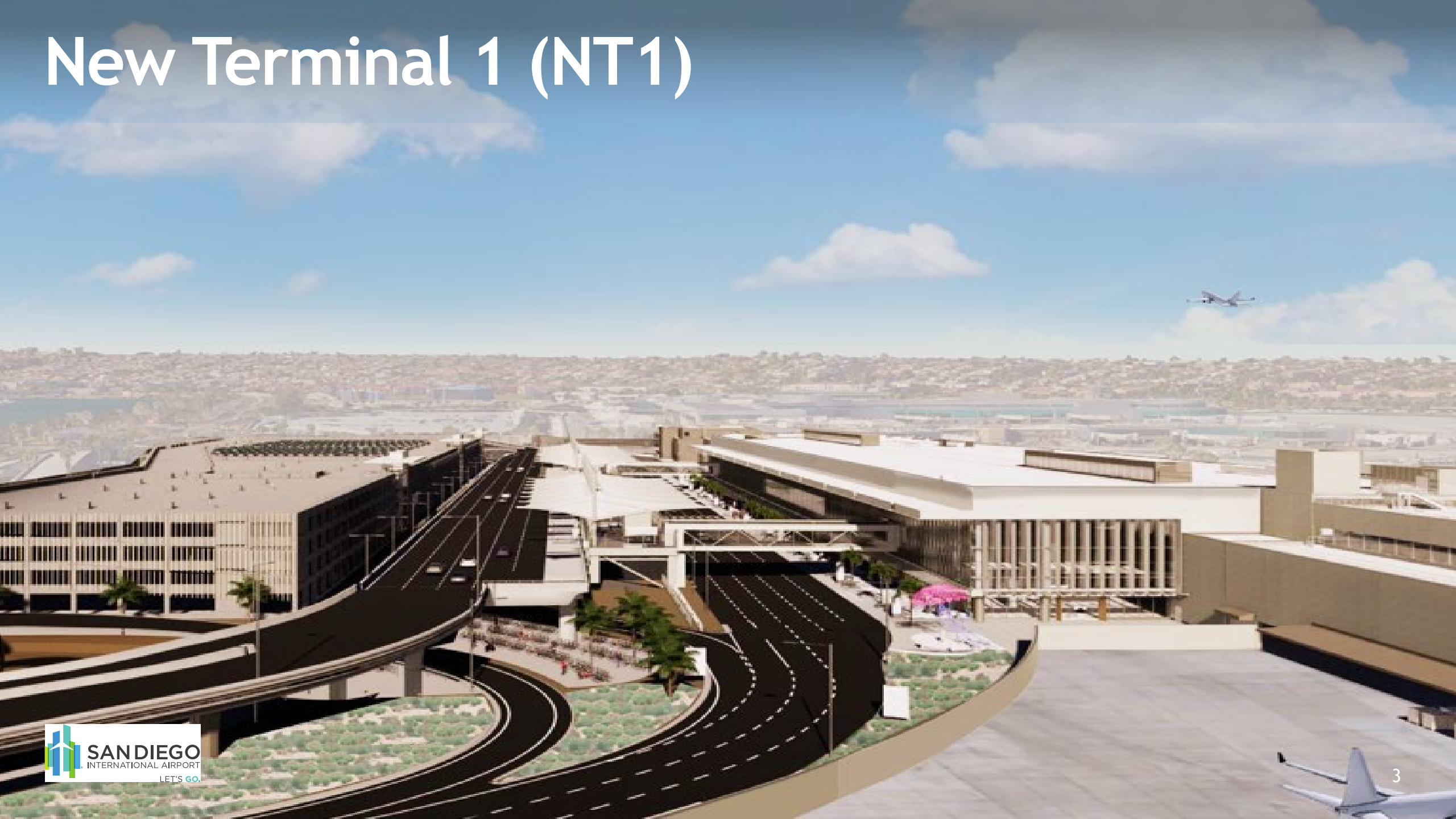
NT1 New Administration Building

NT1 Terminal & Roadways Construction Update

NT1 Airside Improvements

Stay Connected

New Terminal 1 (NT1)



Features

- More than 1 million square feet of terminal space
- Outdoor patio area overlooking San Diego Bay
- Children's play area EV charging infrastructure
- Stormwater capture and reuse system
- Transit Access
- Parking Structure
- 30 Gate Terminal



Arrivals Lane



Departures Lane

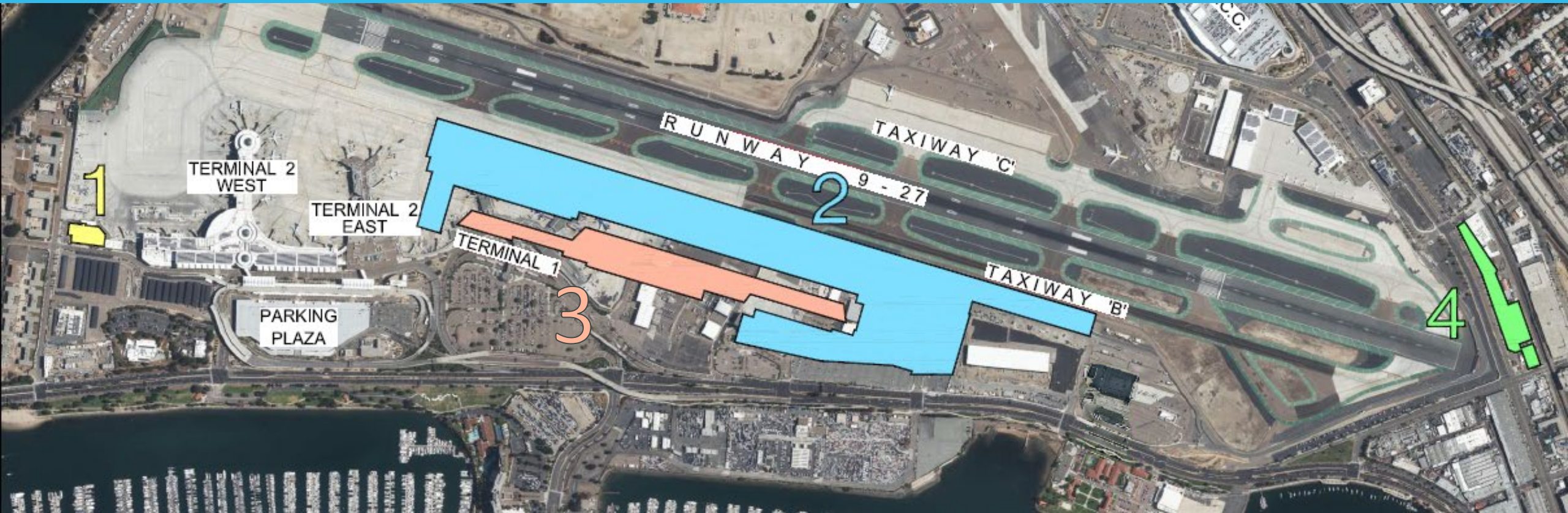
New T1 Overall Project Scope

NEW
T1



- Terminal & Roadways
- Airside Improvements
- Administration Building
- Future Transit Station

Aerial View of Projects



LEGEND:

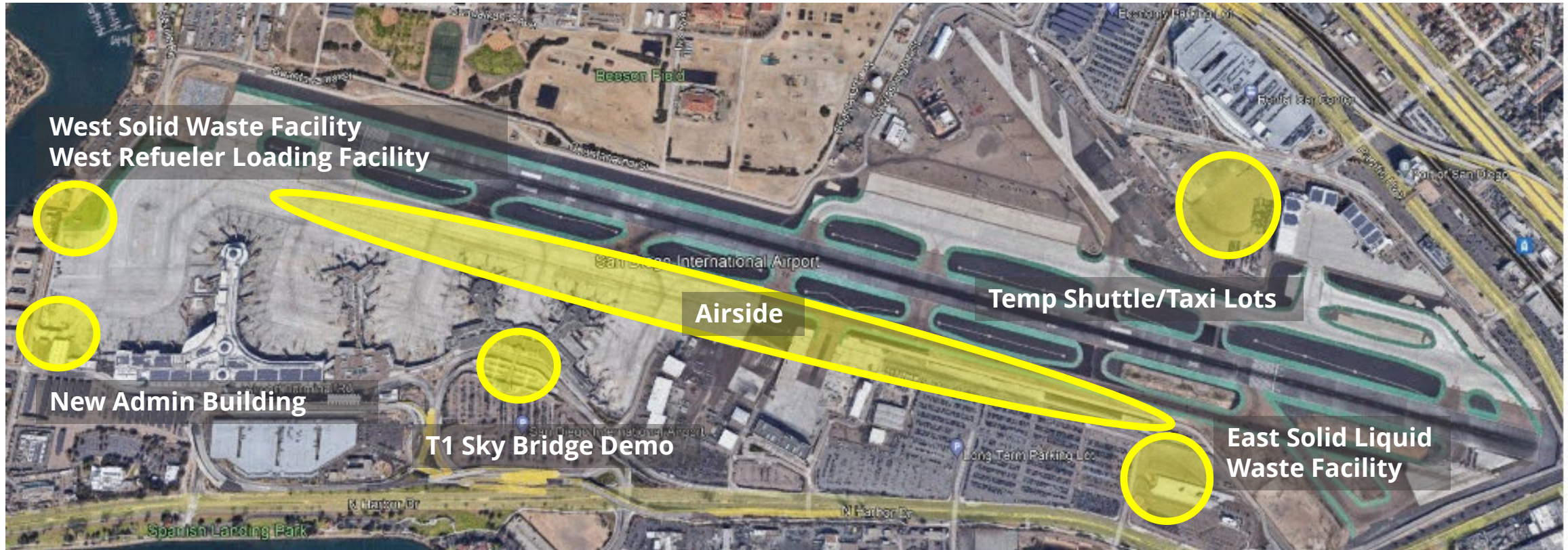
1 ADMINISTRATION BUILDING

2 AIRSIDE IMPROVEMENTS

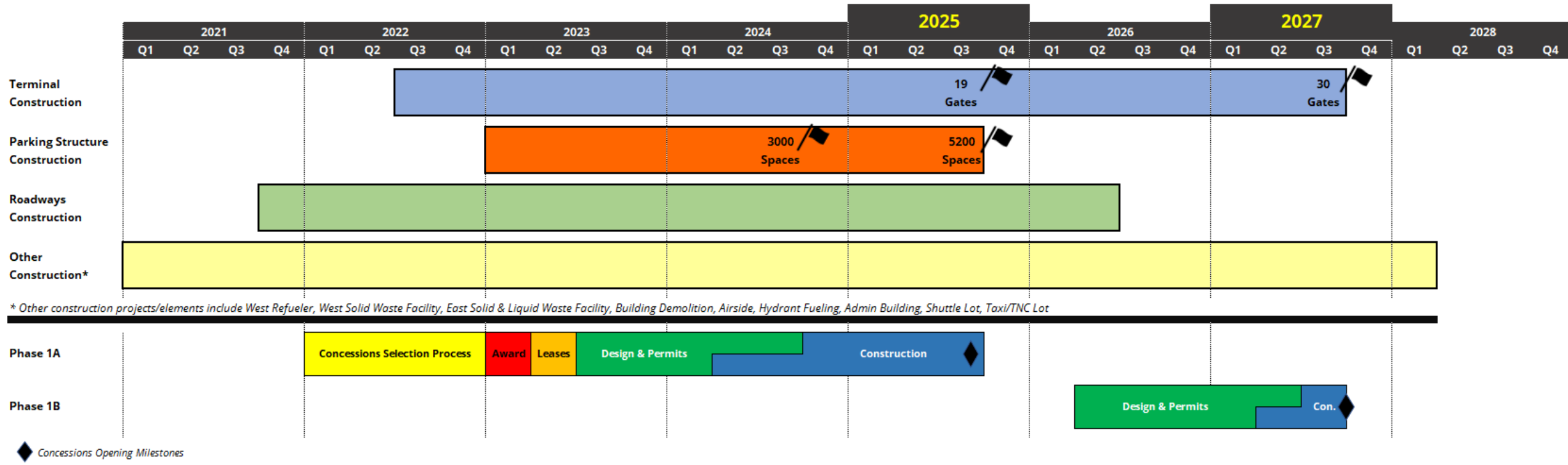
3 NEW TERMINAL 1

4 SHUTTLE LOT AREA

Planned & Ongoing Projects



New T1 Timeline



Milestones

NEW
T1

November 1, 2021

- New T1 construction began.

Late 2023

- Earliest opening date for the new Administration Building.

Late 2024

- New T1 parking structure open.

Mid-2025

- Earliest opening date for Phase 1A.

Late 2027

- Earliest opening date for Phase 1B.

Mid-2028

- Earliest completion date for Airside Improvements construction.

NT1 Design Progress Update

| Design Progress Update

Terminal Building

- 90% Design Deliverable - anticipate in September 2022
- Foundation Permit Received - June 2022
- Start Foundation Construction - June 2022

Landside

- Start Foundation for Bridge Structure - June 2022
- Start Utility Work in Harbor Drive - July 2022

| Design Progress Update - Continued

Parking Plaza

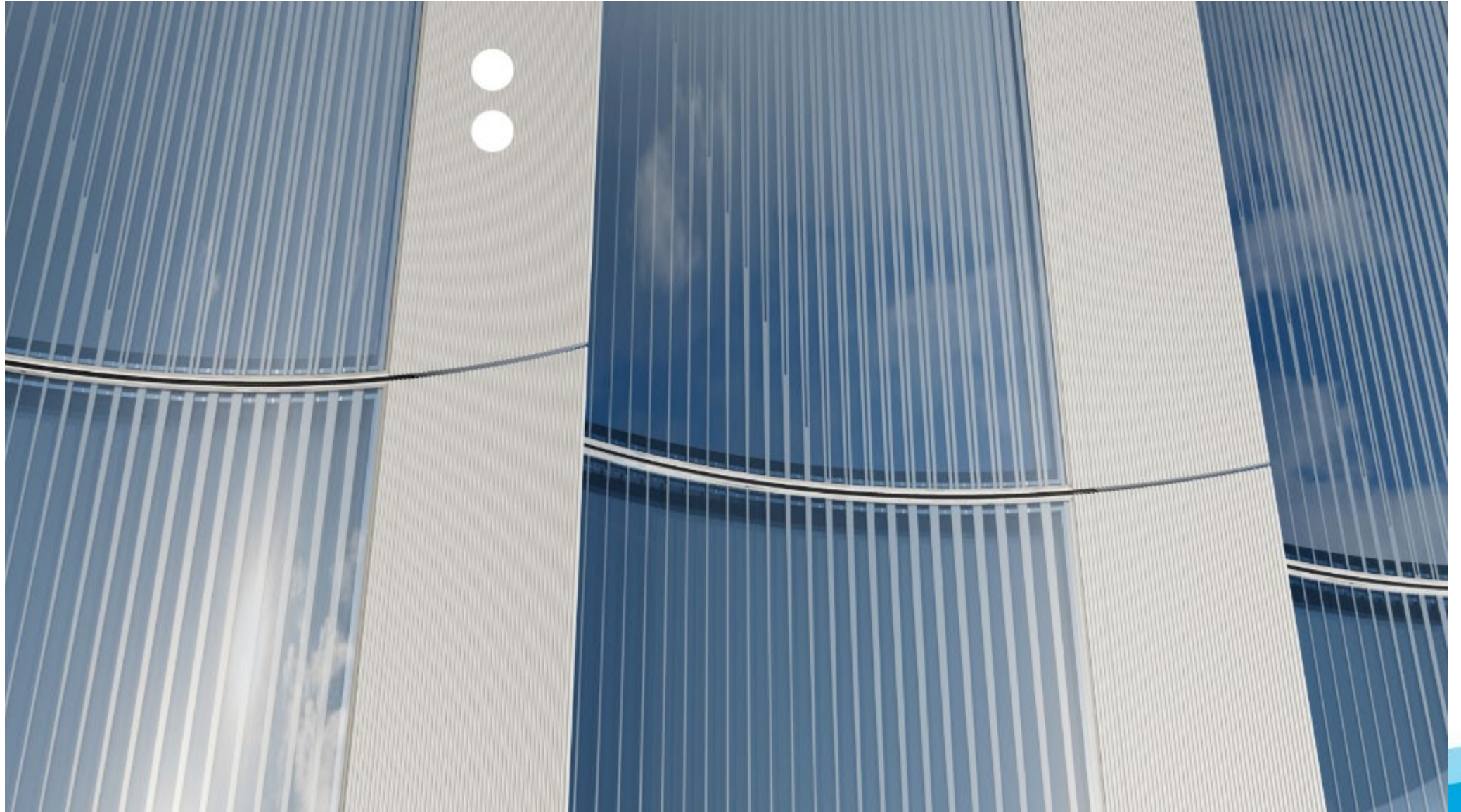
- 60% Design Deliverable - July 2022
- Permitting Process - August 2022 - December 2022
- Start Construction - Anticipated January 2023

Terminal Building Exterior Update

Luminous Wave - East Approach



| Luminous Wave - Exterior



| Luminous Wave - Interior



| Concourse - Dining Terrace



| Arrivals Curb



| Multi-use Path



Terminal Building Interior Update

| Departure Lounge Gates 112, 114 & 115



| Departure Lounge Gates 116-119



| West Concourse



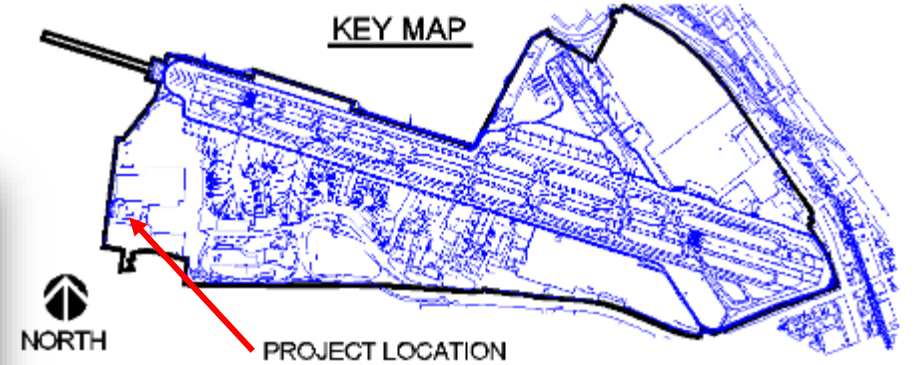
NT1 New Administration Building



414002: NT1 New Administration Building

Project Budget: \$102M

Phase: 100% Design Development Phase



Design Update

DESIGN DEVELOPMENT

- Design 100% Complete
- GMP Development Phase nearing Completion

PERMITTING

- Permits Received: Site Demolition, Utility ROW, Foundations/Frame, & FAA 7460's
- Currently under Review: Primary Building

Construction Update

SUBSTANTIALLY COMPLETED WORK

- Removal of PMC Trailers: Jan-22
- Site Delineation, Fencing & Storm Water Pollution Prevention Measures: Feb-22
- SDG&E High-Pressure Gas Line & 12kV Electrical Ductbank Relocation: Mar-22
- NTC Lot Mobilization, Field Offices, Temp Utilities: Apr-22
- Site Grading & Deep Foundation Pilings: Apr-22
- Underground Utilities: May-22

ONGOING/UPCOMING WORK

- Footings & Foundations: Jun-Jul 22
- Slab on Grade: Jul-Aug 22
- Structural Steel: Aug-Nov 22

Footings & Foundations



Major Milestones

2021

- Board Award/NTP: Jul-21
- NEPA/CCC Approvals: Oct-21
- 30% Design/Validation Phase: Nov-21
- Vacate Old PMC/Site Turn-over: Dec-21

2022

- 60% Design Phase: Feb-22
- Building Construction Start: Mar-22
- 90% Design Phase: Apr-22
- 100% Design Phase/GMP/Building Permit: Jul/Aug-22

2023

- Substantial Completion: Sep-23
- Move-in Complete: Nov-23

Terminal & Roadways Construction Update

Current Construction Impacts

NEW
T1

Airline Gates:

- Closure of gates 1, 1A, 2, 3, and 4 in Terminal 1
- Allegiant Air has moved to Terminal 2 East and JetBlue Airways has move to Terminal 2 West

Lane Closures:

- Entering Terminal 1, partial lane closures are ongoing

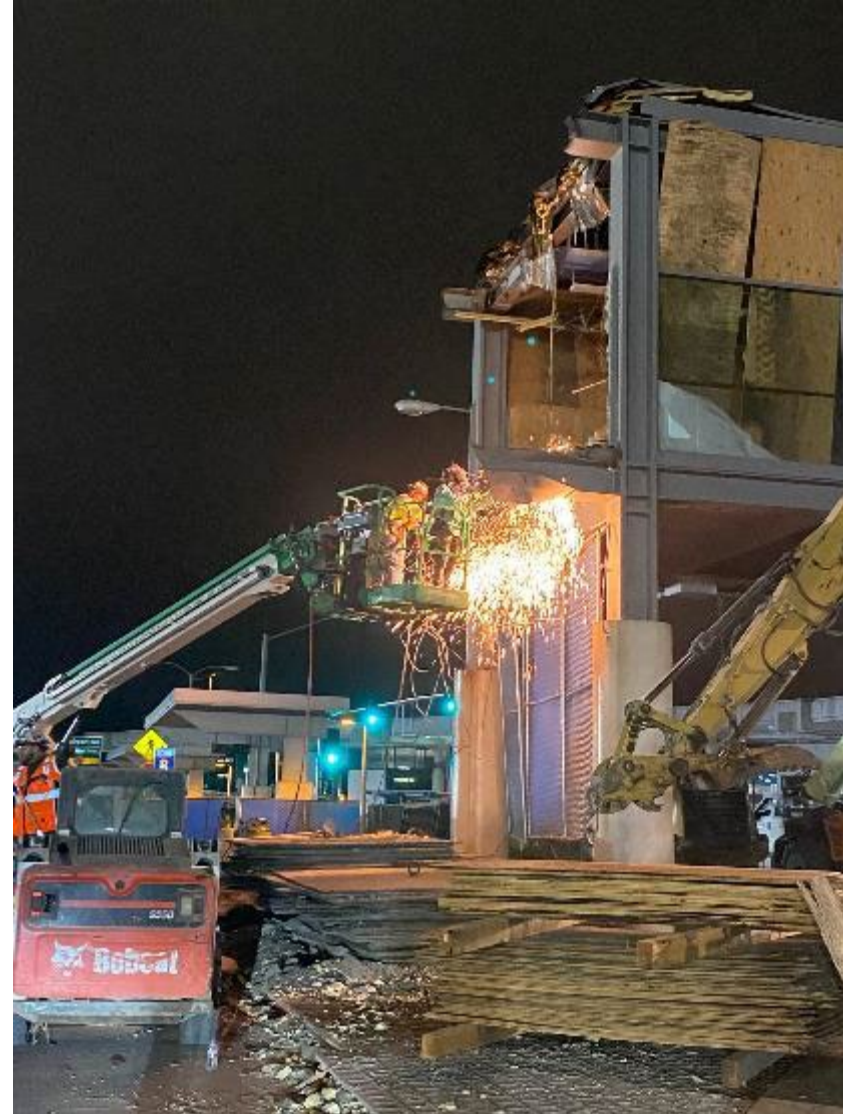
Parking:

- Closure of Terminal 1 parking lot
- Cell Phone Lot relocation to T2 West parking lot
- Entry road impacts from construction phasing

T1 Pedestrian Sky Bridge Demolition



T1 Pedestrian Sky Bridge Demolition



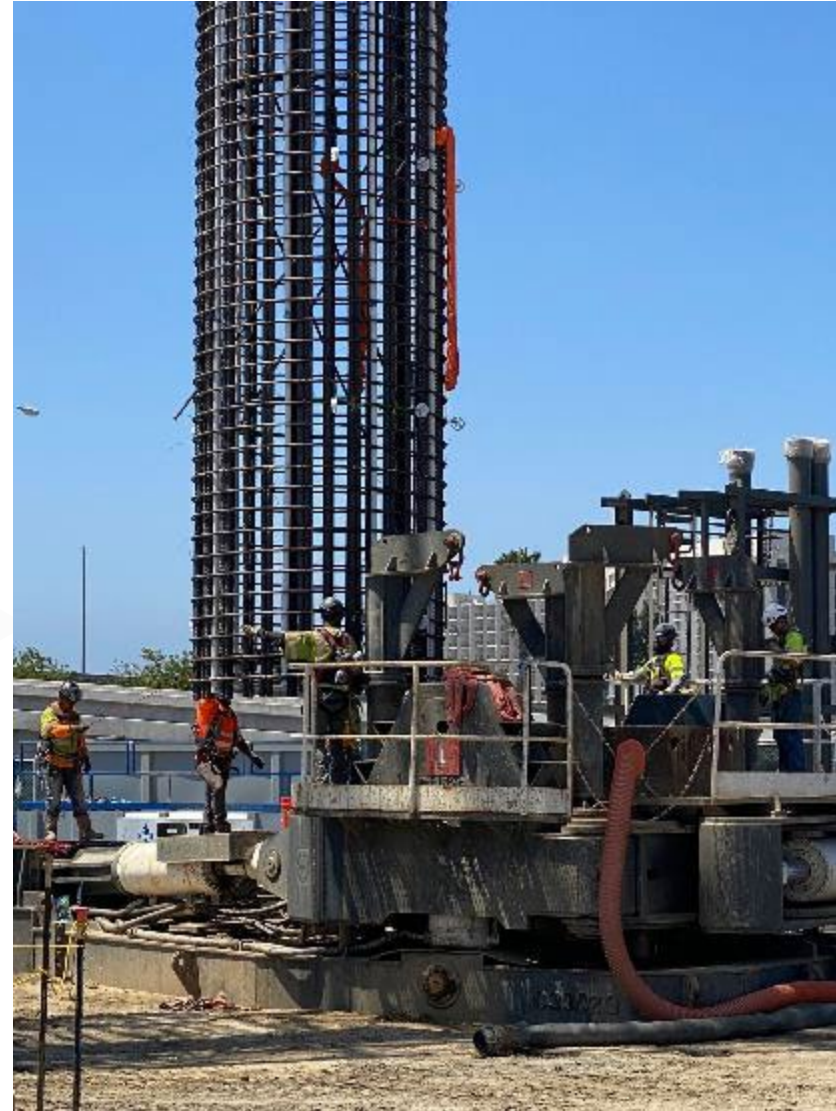
T1 Pedestrian Sky Bridge Demolition



T1 Elevated Departures Roadway Piles



| T1 Elevated Departures Roadway Piles



NT1 Airside Improvements - Construction Update

411001: NT1 Airside Improvements

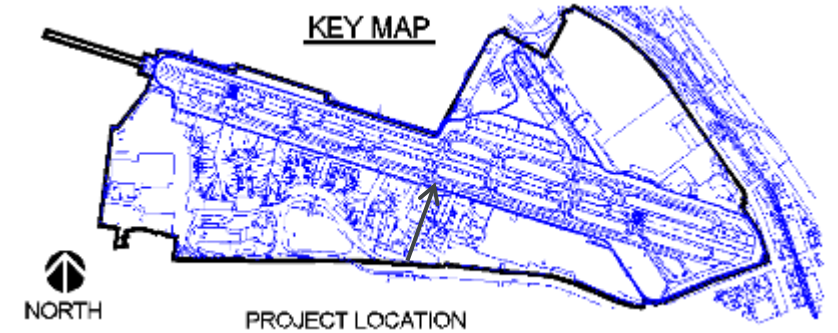
Project Budget: \$306 M

Phase: Construction

Environmental Entitlements Clearance: Yes

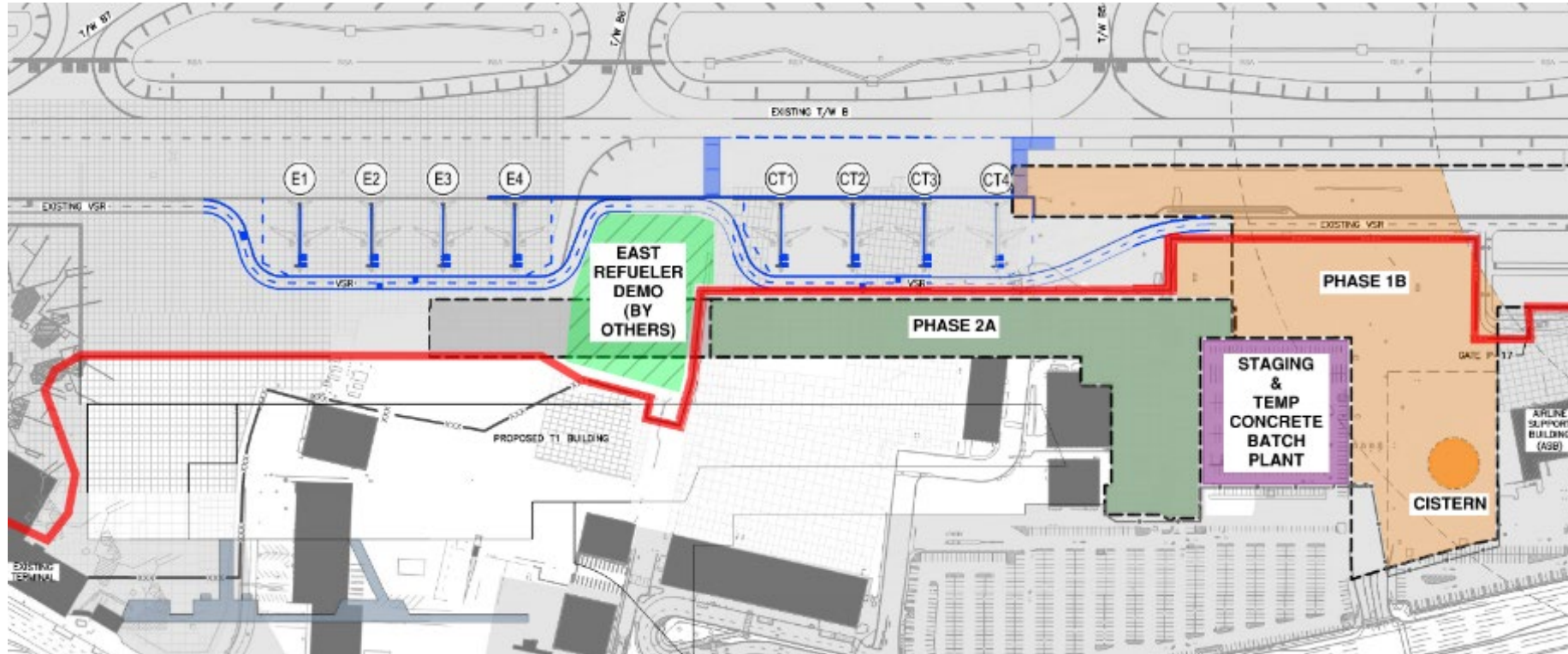
MAJOR MILESTONES ACHIEVED

- Contract Award to Griffith Company: October 7, 2021
- FONSI-ROD Approval: October 22, 2021
- NTP Construction: November 22, 2021
- On-Call Testing & Inspection Agreement Board Approval: January 6, 2022
- Start of Onsite Construction: February 2022
- Relocation of East Ramp RON Positions: May 2022
- Start of Cistern Construction: May 2022



411001: NT1 Airside Improvements

Active/Upcoming Activities



- Storm Drainage Dewatering and Installation
- Environmental Remediation
- 1.5 M Gallon Underground Cistern
- Temp Concrete Batch Plant Installation
- Temp AOA Fence Relocation at East Refueler Demo Site
- Coordination with Hydrant Fueling Projects
- ASB SIDA Modifications
- Prep for End of Least Tern Season

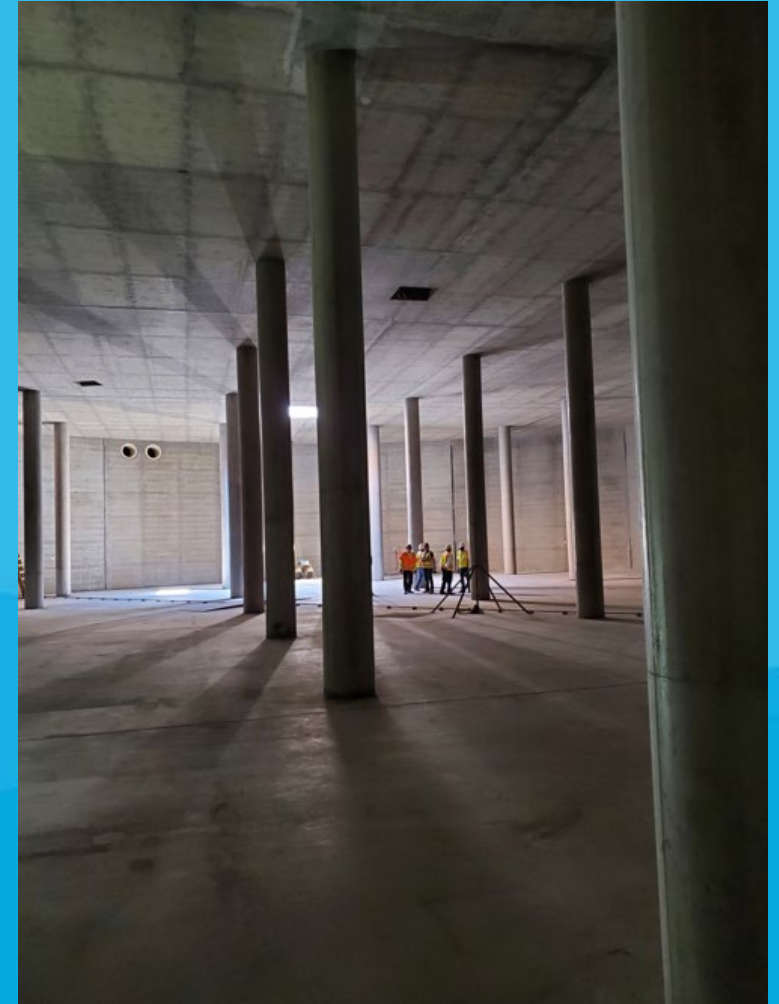
NT1 Airside Storm Drain & Ron Parking



NT1 Airside Improvements



Cistern - Secant Pile Guide Ring



Cistern

NT1 Airside Improvements



Cistern - Secant Pile Concrete Placement



Cistern - Dewatering Well Installation

Shuttle Lot Relocation

Project Budget: \$15.7M

Project Phase: Construction

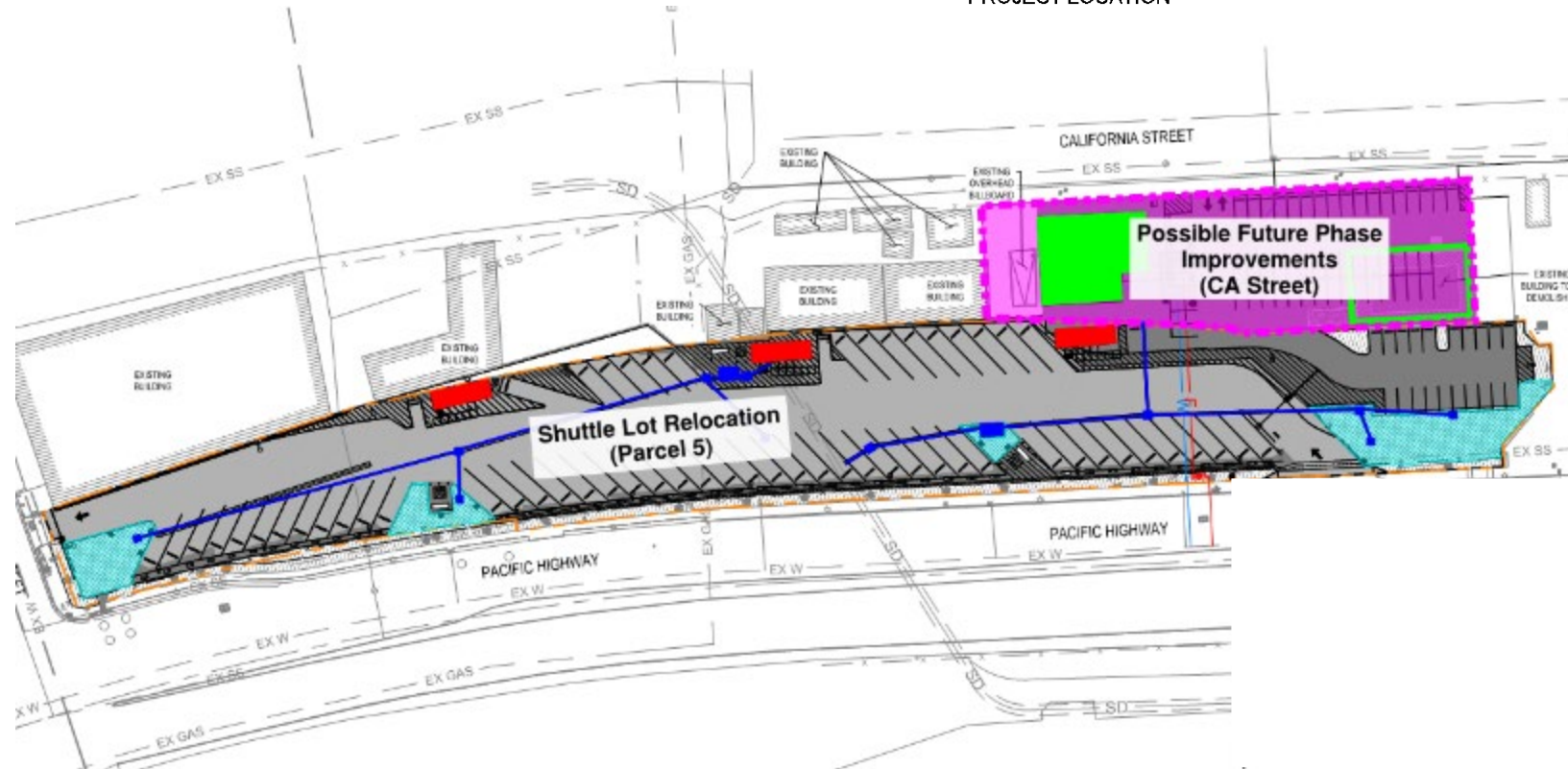
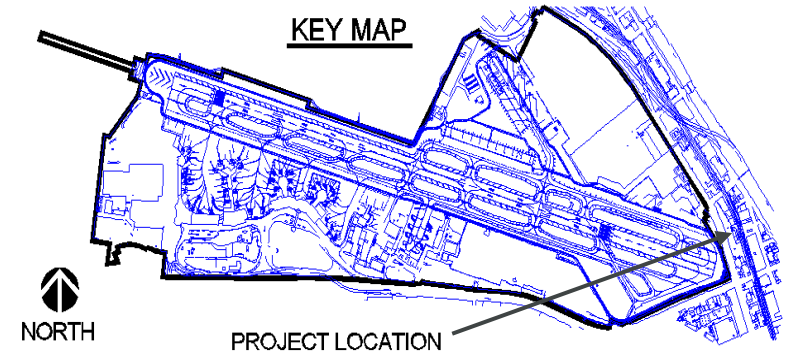
Environmental Entitlements Clearance: Yes

SCOPE

- Relocate RCC Bus/Shuttle Operations Off-Site
- Remove Asphalt/Install Concrete
- Install EV Charging Infrastructure

PROJECT MILESTONES

- Construction Start: June 2022
- Completion: December 2022



Shuttle Lot Relocation



Pavement Demolition and Removal

Stay Connected

NEW
T1

Email

Go in the Know email
newsletter (opt in)

New T1 Navigator (opt in)

NewT1Info@san.org

Social media

Twitter

@SanDiegoAirport

Facebook

/SanDiegoAirport

Instagram

@SanDiegoAirport

Website

NewT1.com

San.org

Mobile

Opt-in text messaging

Text 36017



A large commercial airplane is the central focus, parked on a tarmac. The sun is low on the horizon, creating a warm, golden glow. The airplane's shadow is cast on the ground. In the background, another smaller airplane is visible, and a third airplane is flying in the sky. The overall scene is serene and captures the end of a day at an airport.

Questions?

New T1 Outreach Update – Q2 2022

Michelle Brega, Senior Director, External Relations
San Diego County Regional Airport Authority

July 20, 2022

NEW T1 PUBLIC OUTREACH GOAL:

Continue to build momentum for the long-awaited New T1, while maintaining a cadence of communication regarding project benefits and construction impacts.

Messaging Arc



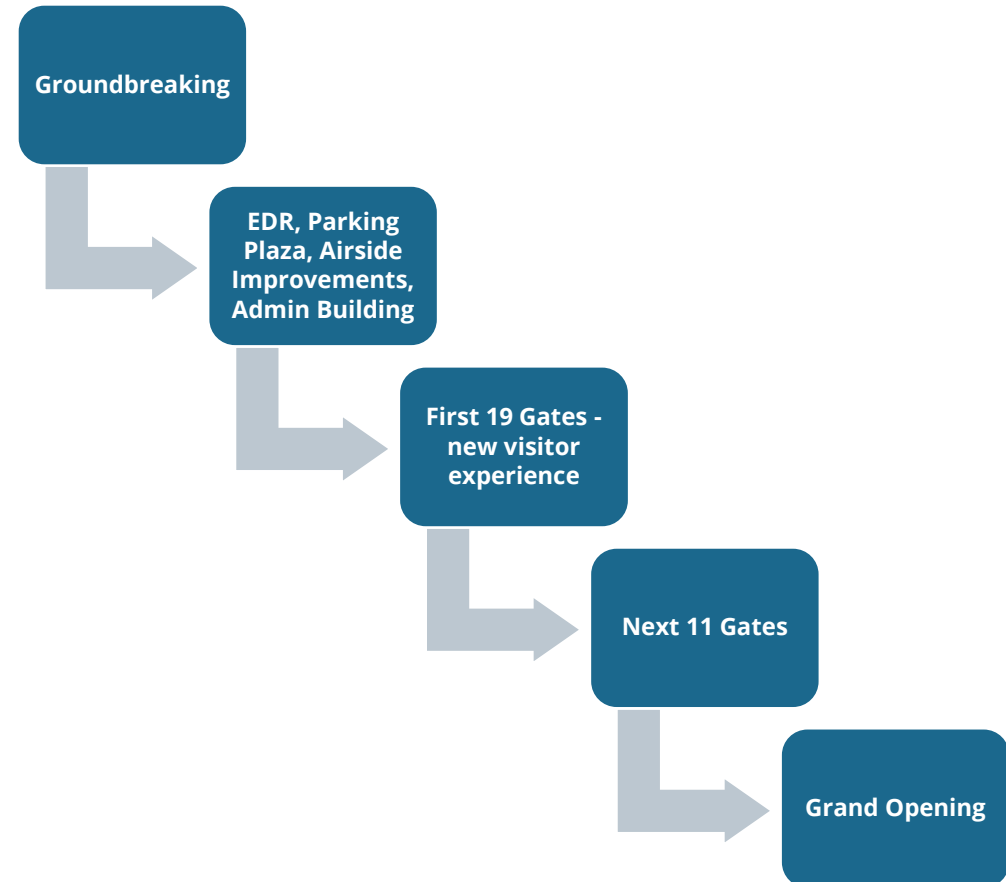
The New T1: Cleared for Takeoff
Groundbreaking – Q4 2021-early 2022

The New T1: Wheels Up
Beginning of Customer Impact - 2022

The New T1: In Flight
Ongoing Project Work – 2023-24

The New T1: On Approach
Nearing Completion – 2025-26

The New T1: Now Arriving
Project Completion – 2027-28



“Wheels Up”

New T1 Customer Messaging Goals through 2022



Reinforce traveler and community awareness of the New T1 project.



Minimize inconveniences w/ timely updates on travel impacts.



Keep audiences updated on New T1 progress.



Provide customer with options, including parking, transit, drop off, TNC, Taxi.



Support airport revenues.



Messaging Themes

NEW
T1

Overarching Message: Plan Ahead & Expect Significant Delays

- **July 5-8, 2022:**
 - San Diego International Airport Terminal 1 construction and detours due to pedestrian bridge demolition.
 - Everyone coming to the airport – whether flying, picking up or dropping off – should prepare for congestion and delays.
 - Passengers are urged to plan ahead for their visit to SAN.

Key Supporting Messages

- **Use public transit to the airport.**
 - Free San Diego Flyer shuttle between the Old Town Transit Center and the airport.
- **Get dropped off or use ride-share.**
 - Have friends or family drop off or pick up.
- **Reserve your on-site parking spot in advance.**
 - Reservations can be made for the Terminal 2 Parking Plaza or valet.
 - Passengers can ride the Terminal Loop Shuttle.

Paid Media Campaign

CAMPAIGN GOAL

85%

Leisure Travelers

Campaign Performance Through May

- T1 awareness ads ran across a total of 19 stations from 1/3/21 – 5/31/22
- ~2,595 radio spots
- More than 24.2 million impressions total
- Paid social media and digital ads generated 77,000+ clicks to NewT1.com
- All digital tactics' CTRs continue to perform above industry benchmarks
- Radio reached 3.5 million San Diego residents



Earned Media - Recent Headlines

NEW
T1



Significant Delays Expected at SD Airport Tuesday Through Friday



Expect big delays at San Diego International Airport, due to Terminal 1 construction



Aeropuerto de San Diego advierte de posibles demoras por construcción



Terminal 1 parking lot, pedestrian bridge at SAN to close permanently



San Diego airport looking for local retailers and restaurants to fill Terminal 1. Are you one of them?



Aeropuerto Internacional de San Diego cierra puente peatonal y estacionamiento

Storytelling

NEW
T1

San Diego International Airport
800 subscribers

HOME VIDEOS PLAYLISTS COMMUNITY CHANNELS ABOUT

Uploads SORT BY

Concessionaires Share Inside Look at Doing Business at...
42 views · 1 day ago

SPANISH - New T1 Parking Impacts
49 views · 2 weeks ago

Tips on Finding Parking at the San Diego International...
470 views · 1 month ago

How to Apply for a Local Business Enterprise (LBE)...
32 views · 1 month ago

Ride the San Diego Flyer
2.7K views · 2 months ago

Kristine and Scout at New T1
454 views · 2 months ago

Cell Phone Lot Updated
361 views · 2 months ago

Cell Phone Lot Update
151 views · 2 months ago

Make Yourself at Home Exhibition
39 views · 2 months ago

Spring Break Travel Tips
97 views · 3 months ago

Cell Phone Lot
976 views · 3 months ago

Women's History Month
57 views · 3 months ago

San Diego International Airport
Posted by Lari Casillas
4h · 🌐

#SDAirportTravel 🚧 SAN is halfway through its Skybridge demolition at Terminal 1!

Starting TODAY and into Friday, the curbside drop-off and pick-up lane in front of Terminal 1 is closed. Traffic is being rerouted through the ground transportation island. (See map).

¡SAN está por terminar la demolición del puente peatonal frente a la Terminal 1!

Comenzando HOY y hasta el viernes, el camino frente a la Terminal 1 donde se puede recoger y dejar a los pasajeros estará cerrado. El tráfico será reubicado a la isla de transporte terrestre (ver mapa).

San Diego Airport @SanDieg... · 2d
The Terminal 1 skybridge demolition is happening now! #NewT1 #SanDiegoAirport

2,902 views
4 8 33

San Diego Airport @SanDiegoAirport

We San Diegans are spoiled with year-round sunshine ☀️, beaches, diverse cuisine, and amazing locally-owned, small businesses.

If you know of one that would like to be a part of #NewT1, let them know about the below information sessions 📍 #SanDiegoAirport #smallbusinessowners

Interested in doing business with the San Diego County Regional Airport Authority (SDCRAA)? The New T1 will have opportunities for local and small companies, including women- and minority-owned and service-disabled/veteran-owned small businesses to work on various aspects of the New T1.

Add another Tweet

- San Diego International Airport YouTube Channel
- Social media
- CEO & Chair messages to partners & stakeholders

Signage & Video Displays

NEW
T1



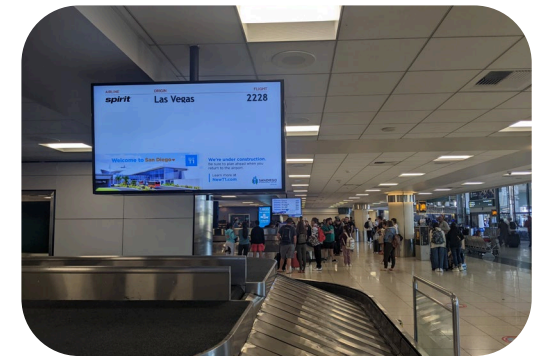
Clear Channel



Façade &
Fence Line



Reach TV



In Terminal

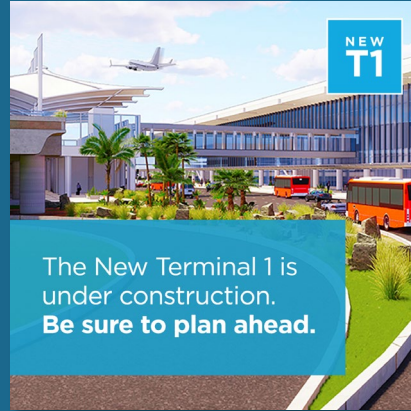
Campaign Creative

Sample of Social Media

NEW
T1



You'll want to get here early for arrivals and departures.
Learn More



Reserve your parking spot in advance or consider our valet service.
Make a reservation



The New Terminal 1 is under construction. Be sure to plan ahead and consider taking public transit or the free SD Flyer. For construction updates and to learn more visit www.thenewt1.com



Ongoing Outreach to Airlines

NEW
T1

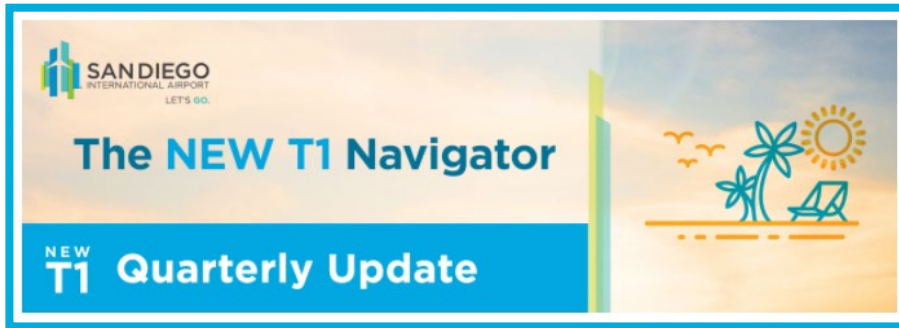
STRATEGY: Continue to Partner with airlines to reach customers booking travel out of SAN

- All airlines contacted; 10 airlines actively communicating to their customers
- Message to airlines: Construction will impact customers traveling out of both terminals. Parking will be limited.
- Impact and timelines communicated
 - Reductions occurring in front of both terminals beginning in January
 - Complete loss of T1 parking in July
 - Call to Action: Plan ahead and make a parking reservation.



Newsletter & Text Message Activations

NEW
T1



Quarterly newsletter



Real-time construction alerts

The New T1 has been cleared for takeoff!
Stay in the know with regular updates.

Sign up for email updates here:

*Name

*Email

Sign up for text updates (including traffic alerts) here:

Phone (XXX) XXX-XXXX



*Check this box to agree to receive informational updates from SAN about upcoming changes, closures, and other updates related to the construction of the New Terminal 1 at SAN. Message frequency varies. Message and data rates may apply. Privacy Policy.

SUBMIT

Opt-in page on newT1.com
for both newsletter & text
alerts

Website Additions

NEW
T1

- Added banner alerts to the homepage of san.org to inform passengers and visitors about current construction impacts.

The screenshot displays the San Diego International Airport website homepage. At the top, an orange banner reads: "Terminal 1 Construction and Detours Due to Pedestrian Bridge Demolition. Expect significant delays around the airport July 5-8. [Learn more here](#)". Below this is a blue navigation bar with links for FLIGHTS, TO & FROM, PARKING, SHOP DINE RELAX, TRAVEL INFO, SERVICES & FACILITIES, INTERACTIVE MAP, AIRPORT ART, and BLOG. A search bar and "ACCESSIBILITY TOOLS" link are also present. A teal bar highlights "NEW T1" with links to "New T1 Information" and "New T1 Business Opportunities". The main banner features the Allegiant logo and the text: "A smoother ride to roughin' it. Fly to Provo on Allegiant." with a green "BOOK YOUR ADVENTURE" button. The background image shows two people hiking in a desert canyon.

Partner Amplification

- San Diego Tourism Authority
- San Diego Regional Economic Development Corporation
- Downtown San Diego Partnership
- San Diego Regional Chamber of Commerce
- Point Loma Association

The San Diego International Airport is managed by the [San Diego County Regional Airport Authority](#) and receives more than 20 million passengers a year. The airport terminals are easy to navigate and offer gourmet food and drink from local restaurants.

TRANSPORTATION TO/FROM THE AIRPORT

NOTE: San Diego International Airport officials are advising travelers of significant impacts to traffic and parking in front of Terminal 1 due to construction work on a [brand-new terminal](#). The impacts are expected to continue through the end of 2024; once completed, the project will yield a stunning new Terminal 1 as well as greatly improved airport access. Parking has been reduced with the permanent closure of the existing Terminal 1 parking lot, and officials advise travelers to expect potential delays and to find alternative modes of travel to the airport so as to avoid the need for on-site parking.

Here are some of the options:

SAN DIEGO FLYER SHUTTLE

Travelers can now plug into a convenient (and free!) new link between the airport and regional transit: The San Diego Flyer, an electric shuttle-bus service. The Flyer operates seven days a week between the airport and the Old Town Transit Center, where travelers can connect to the San Diego Trolley, MTS bus lines and Coaster and Amtrak trains. Shuttle trips are timed to meet the first and last trolleys, trains and buses of the day, with initial pickup at 4:45 a.m. and final pickup/dropoff at 12:30 a.m. The buses stop at both main airport terminals as well as the Old Town center, arriving every 20 to 30 minutes. Look for the shuttle with the light orange sides adorned with airplane icons and the word "Flyer." The buses are powered by 100 percent sustainable energy via charging stations on airport property, and each one has air conditioning, luggage racks and an ADA ramp. Visit the airport's [San Diego Flyer page](#) for more information.

Business Updates

We and our friends at the [San Diego County Regional Airport Authority](#) want to remind you about what's going on with the [San Diego International Airport \(SAN\) - Terminal 1 Construction](#): If you're flying out or picking up at [San Diego International Airport \(SAN\)](#) next week, **July 5 - 8**, please plan ahead and arrive early. Everyone coming to the airport - whether flying, picking up or dropping off - should prepare for congestion and delays as construction on the New Terminal 1 project really "takes off". Vehicle and pedestrian routes will temporarily shift throughout the week, so please give yourself more time traveling to and from SAN. Visit [NewT1.com](#) for more info.

Airport

Free Rides on Airport Route 992 to Downtown this summer!

Touch down, then take off! Starting Friday, May 27 MTS is offering free rides on Airport Bus Route 992, with service from Terminals 1 and 2 to downtown San Diego. The promotion runs through Labor Day. Just get on board and go! Return trips to the Airport are not included in this promotion. See below for more information on airport service.

RESOURCES FOR MEMBERS FROM MEMBERS

San Diego International Airport (SAN) - Terminal 1 Construction

If you're flying out or picking up at [San Diego International Airport \(SAN\)](#) next week, July 5 - 8, please plan ahead and arrive early. Everyone coming to the airport - whether flying, picking up or dropping off - should prepare for congestion and delays as construction on the New Terminal 1 project continues and the former pedestrian bridge is demolished. Vehicle and pedestrian routes will temporarily shift throughout the week, so please give yourself more time traveling to and from SAN. Visit [NewT1.com](#) for more info.

[New T1 updates: Plan ahead](#)

Be sure to pay attention to [current travel impacts](#) as you prepare for your trip!

On June 5, the Terminal 1 parking lot will close permanently. Secure your spot in SAN's parking plaza by [making a reservation](#) or try our convenient [valet service](#).

The New T1 Parking Plaza is expected to open in late 2024.

If you are picking up or dropping off a loved one, give yourself extra time to arrive at the airport.

SDIA is also advertising a boarding option aimed at expediting passengers to planes. Is it right for you?

FROM THE DESK OF JULIE COKER

Happy Pride Month, everyone! With so many celebratory events planned over the next several weeks and into July - culminating in our city's awesome Pride Parade and Festival on July 16 - it's a wonderful season to celebrate our diverse community and the strength that comes from promoting pride and respect for all. Did you know the festival is the largest civic event in our region, attracting 250,000 people over several days? Of course the [San Diego Pride](#) organization, a longtime SDTA member, does this work all year long. From corporate trainings to advocacy work to creative events and programs, they work tirelessly toward the vision of a world free of prejudice and bias. I am proud of and grateful for their membership and partnership.

Partnership is exactly what we're all going to need over the next several months, as [construction gets under way](#) at San Diego International Airport. This major and much-needed construction of [the New T1](#) will impact visitors both arriving and departing, but thanks to excellent communication from the teams at the airport, the city, the county and our partners at the Convention Center, I'm confident we can continue to offer travelers a safe and streamlined experience. After all, construction is a sign of progress. The new T1 is going to be amazing, with significant, positive impacts on travel and tourism in San Diego over the long run.

Airport

Located just three miles away from the Convention Center, getting to the [San Diego International Airport](#) takes approximately 10-15 minutes by car or shuttle. Some hotels offer shuttles to and from the airport; be sure to check with your hotel.

From June 2022 through 2024, the airport will be constructing a new, modern Terminal 1 to replace the outdated terminal. Travelers are encouraged to give themselves extra time when going to the airport. See the [timeline and details](#).

Curbside Volunteers

- Between June 15 and July 8 more than 170 employees volunteered curbside
- 3-hour shifts
- Answered questions from visitors and helped them navigate the airport during construction



Community Presentations

NEW
T1

Community Organizations

- Point Loma People for Progress
- National Association of Women in Construction
- Associated General Contractors of America
- ULI- Airports Development Council
- San Diego Lead- Influence San Diego
- San Diego Taxpayers Association
- City of San Diego Mobility Board
- TaylorMade
- San Jose Chamber of Commerce
- Metropolitan Transit System
- Del Mar Rotary Club
- Point Loma Rotary Club
- San Diego Chamber of Commerce

Elected Officials

- San Diego Councilmember Joe LaCava
- San Diego Councilmember Chris Cate
- San Diego Councilmember Jen Campbell
- San Diego Councilmember Stephen Whitburn
- San Diego Councilmember Raul Campillo
- San Diego Councilmember Vivian Moreno

Stakeholder Feedback

NEW
T1

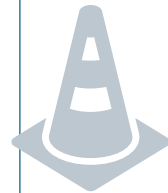
Top Community Questions:



Business opportunities



Parking



General questions
about timing, new
routes with construction



Questions?



Item 3

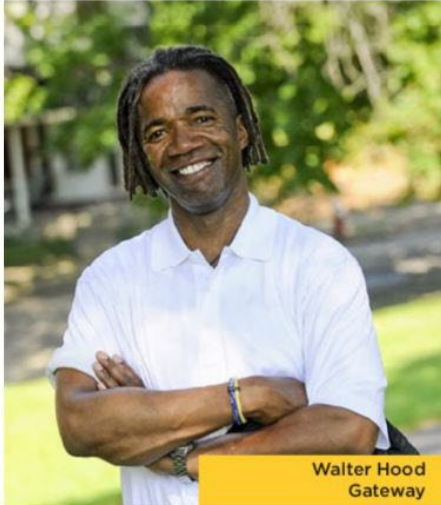
New T1 Public Art Concept Proposals



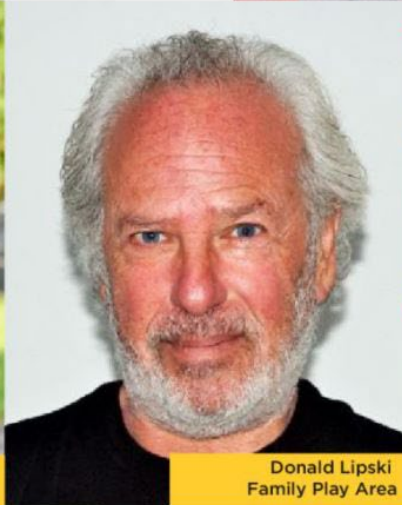
Nova Jiang
Vertical Ticketing



Matthew Mazzota
Outdoor Plaza



Walter Hood
Gateway



Donald Lipski
Family Play Area



Amy Ellingson
Recompose Area



Erwin Redl
Food Hall Interactive

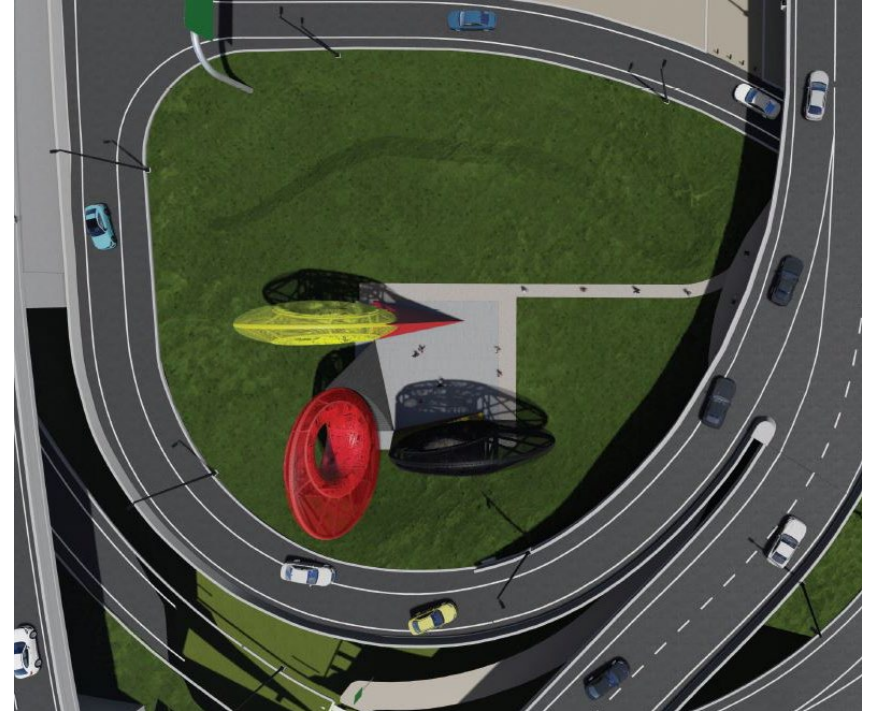
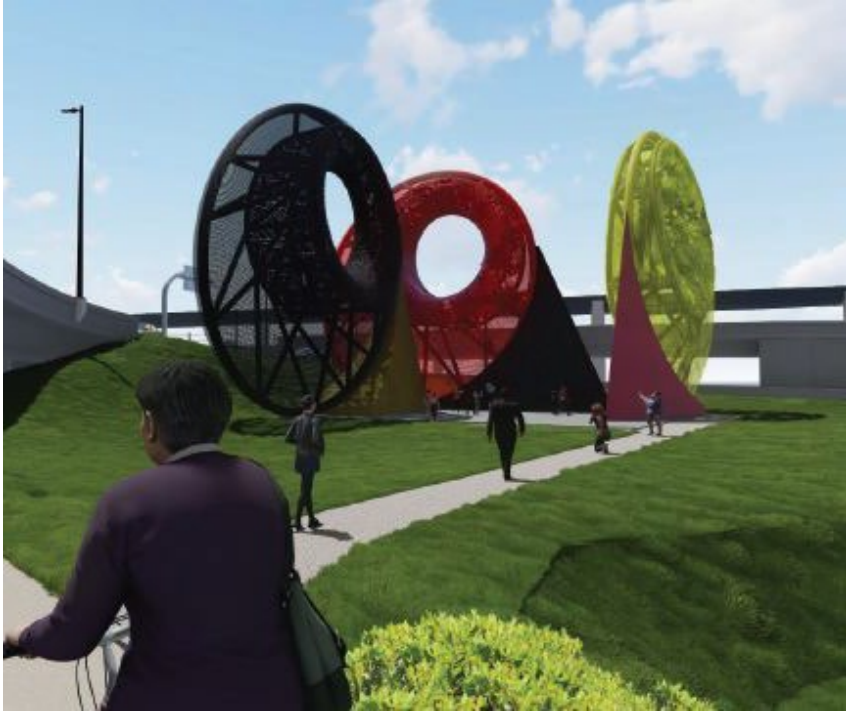
NT1 Public Art Locations



- Gateway Project
- Vertical Ticketing Project
- Curbside Plaza Project

- Recomposure Area Project
- Food Hall Interactive Project
- Family Play Area Project

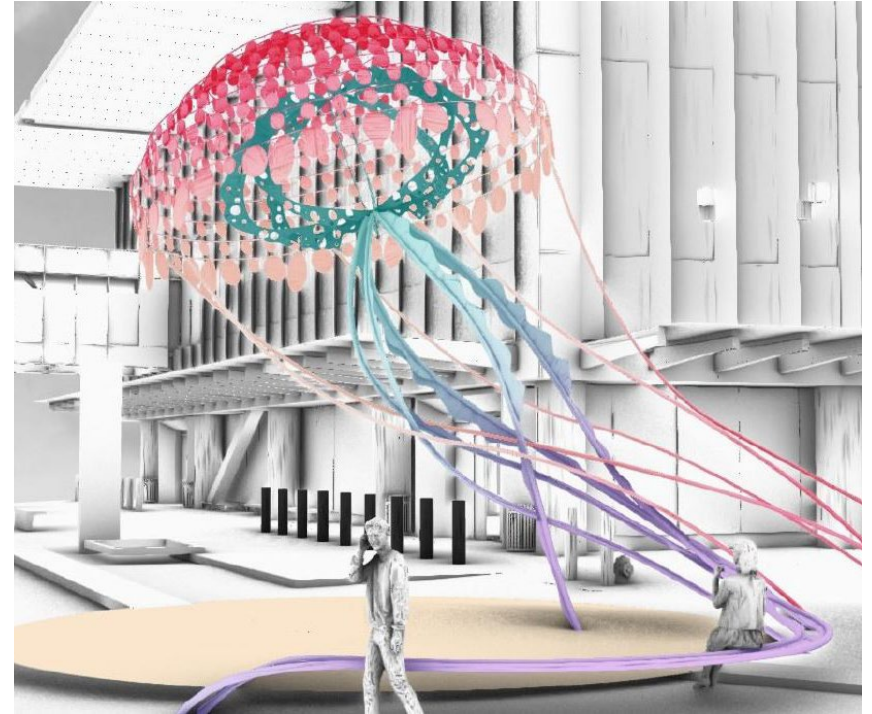
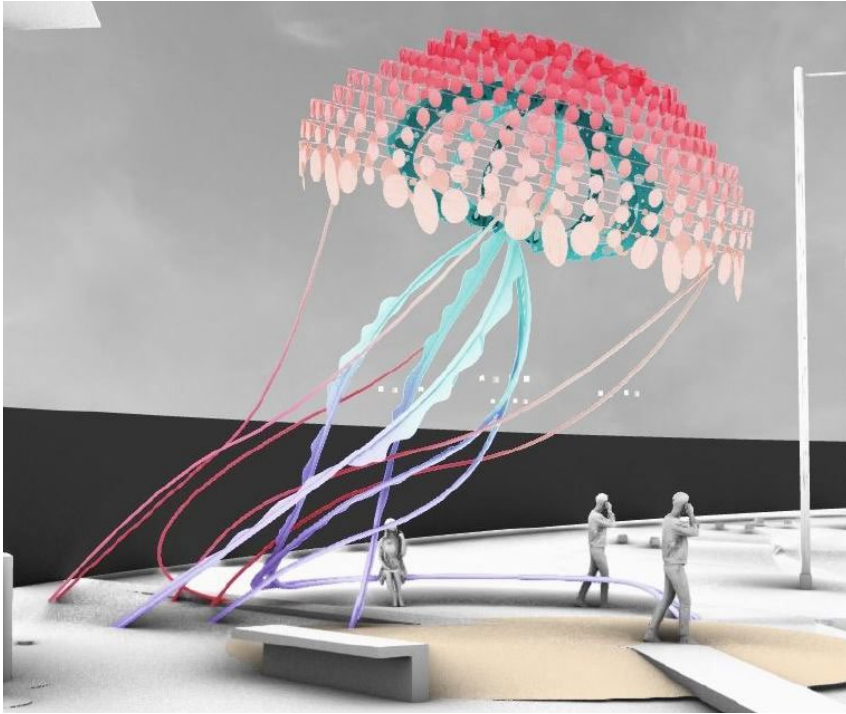
Walter Hood



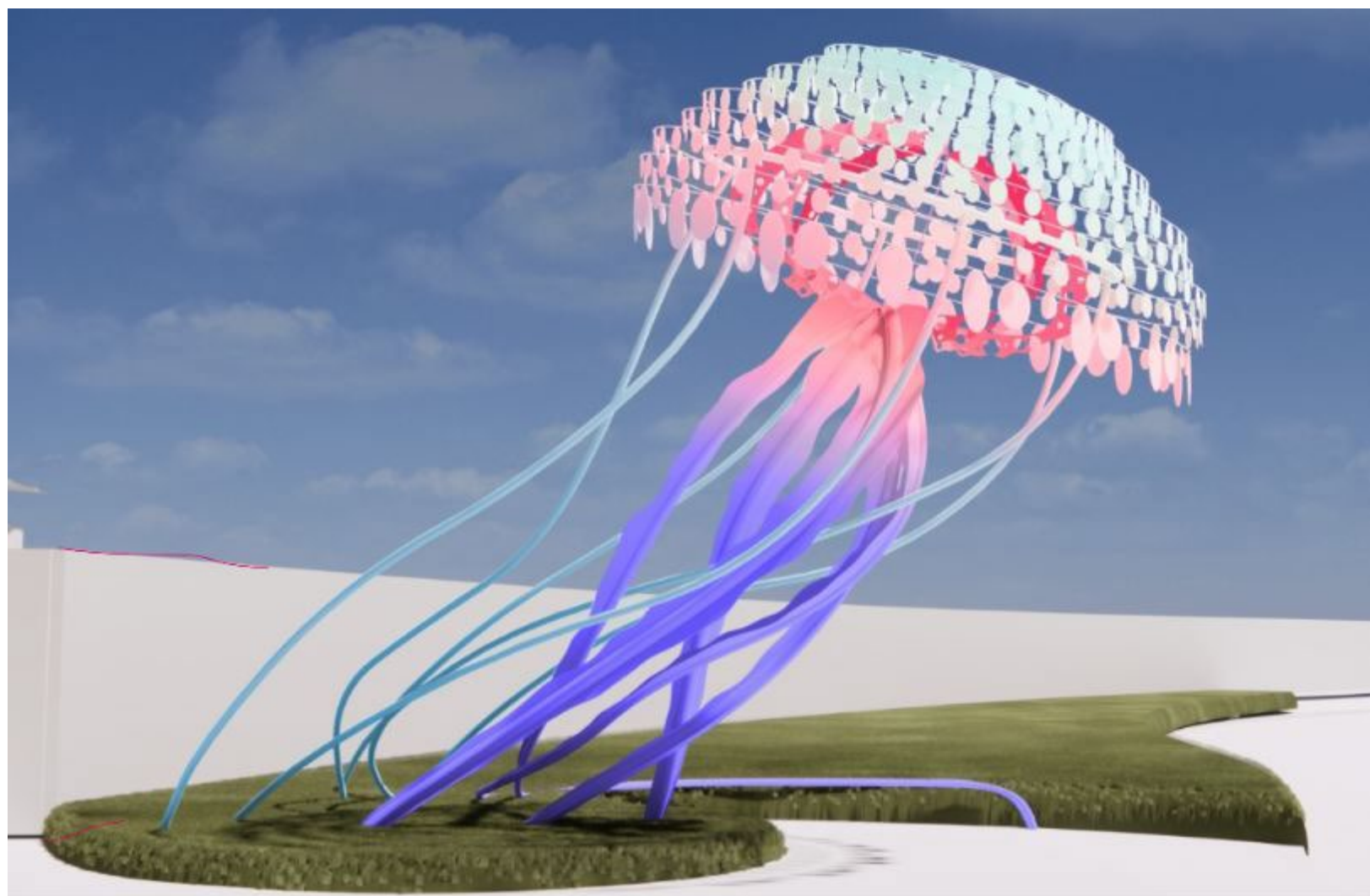
Gateway Project



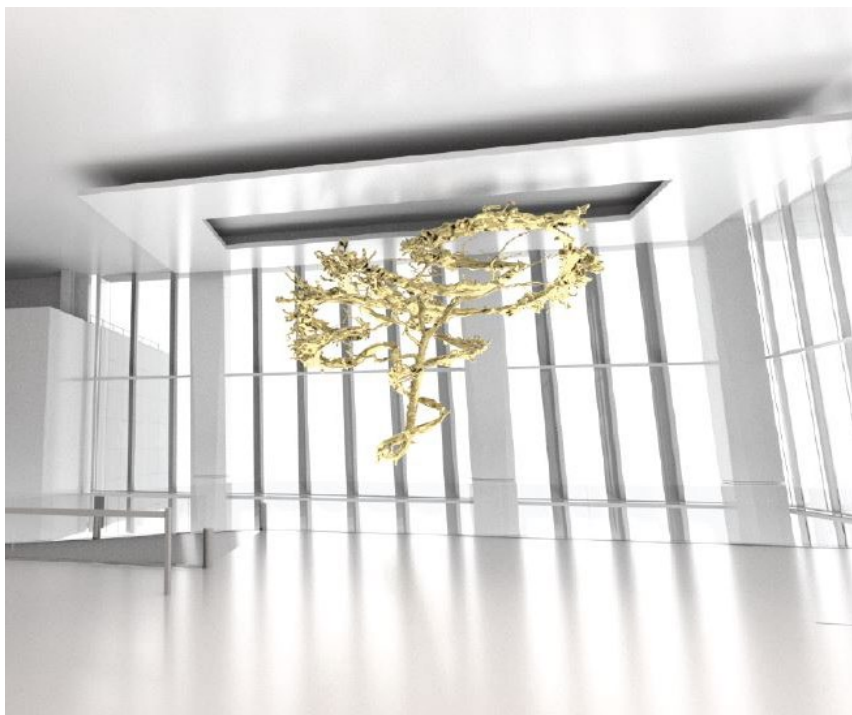
Matthew Mazzotta



Curbside Plaza Project



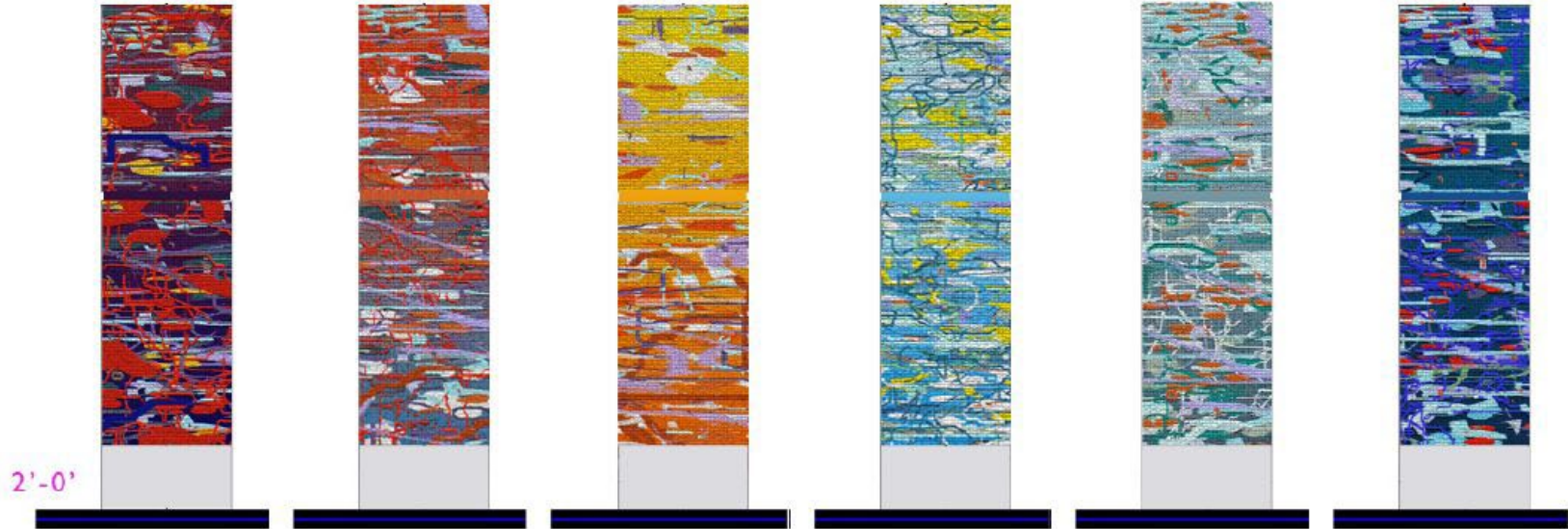
Nova Jiang



Vertical Ticketing Project



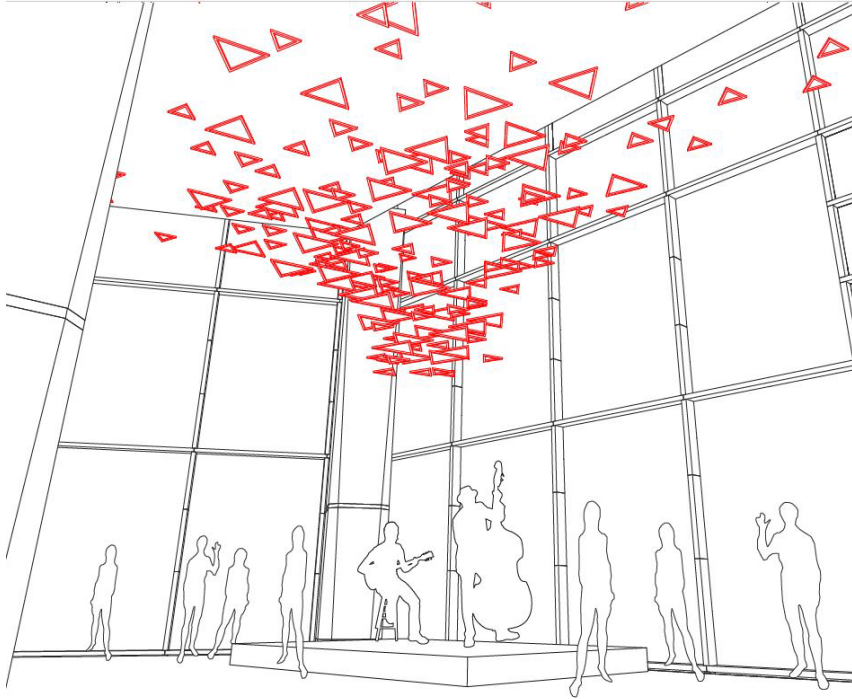
Amy Ellingson



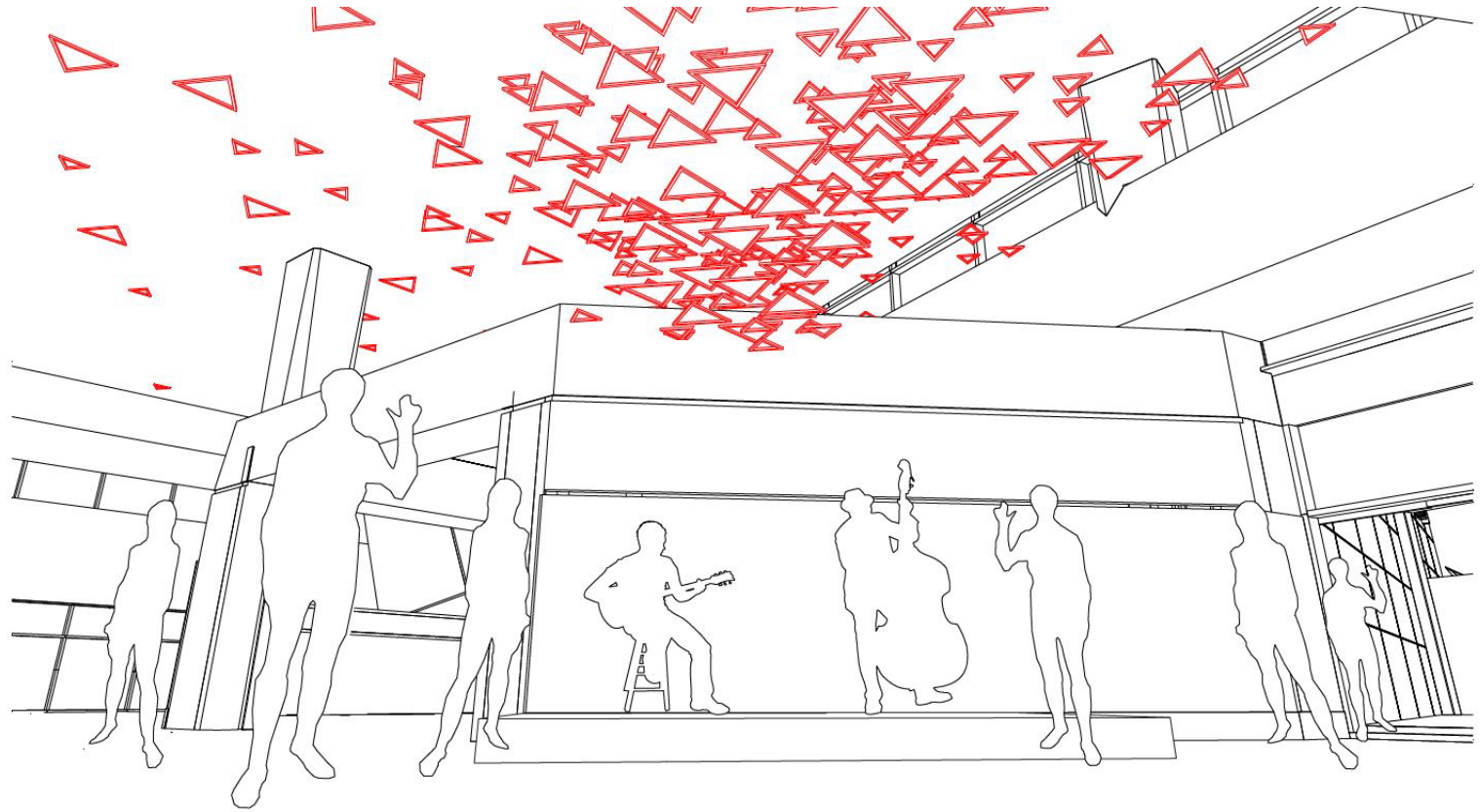
Recomposure Area Project



Erwin Redl



Food Hall Interactive Project - West Food Hall



Food Hall Interactive Project - East Food Hall

Donald Lipski



West Stretch Family Play Area





Thank You!



Dining & Retail Opportunities

@ San Diego International Airport

And Small Business Update

July 20, 2022

Amazing @ SAN

- 3rd busiest airport in California
- Served 25 million total passengers in 2019
- 80+% recovered to pre-pandemic enplanement levels
- New facilities to upgrade the current customer offering
- T1: next step in creating a strong San Diego 'sense of place'





Happening @ SAN

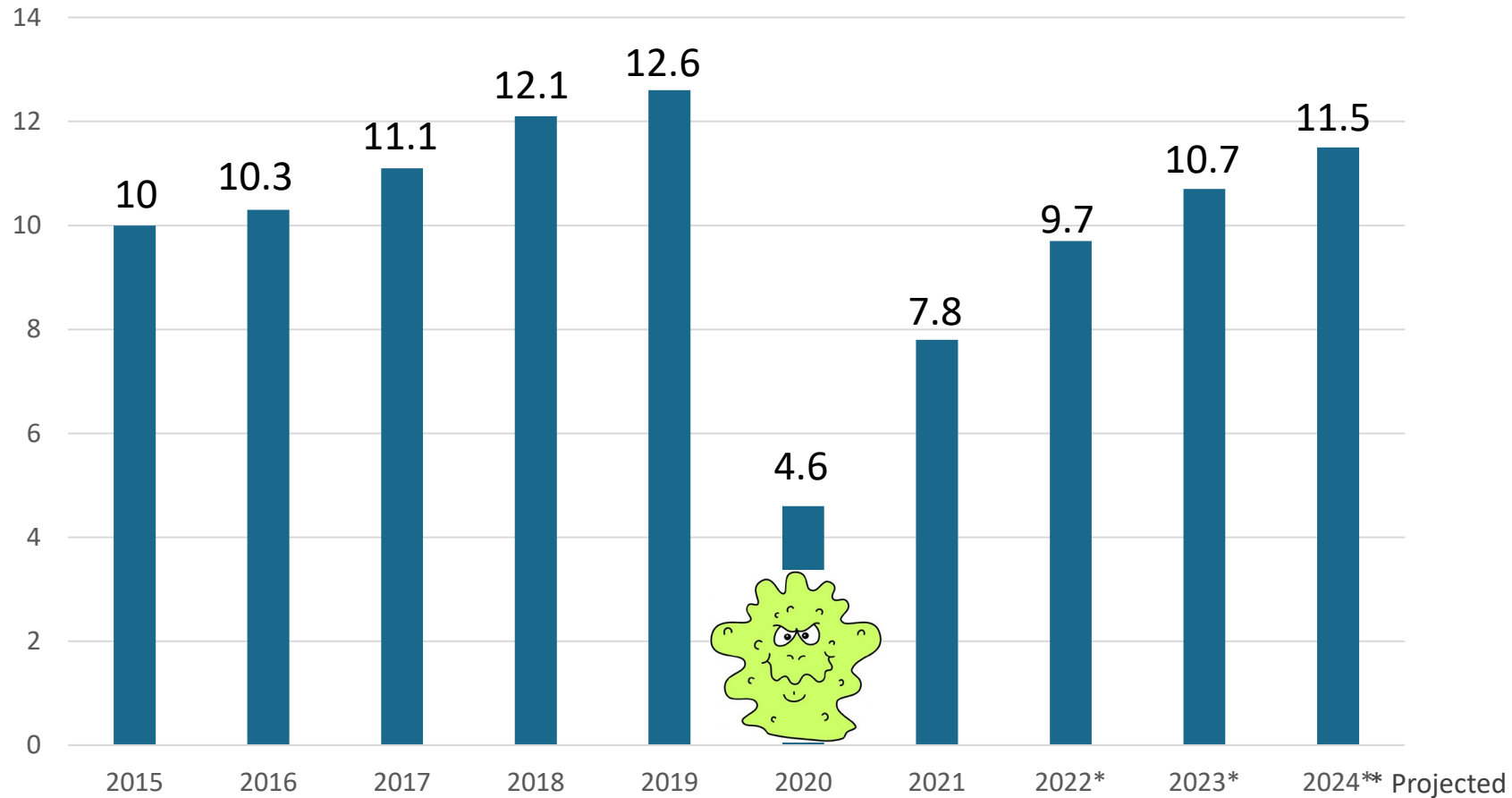
WORLD CLASS & UNIQUELY LOCAL AIRPORT

- T2/Green Build: end of “master concessionaire” era, multiple operators
- Small business participation
- Created San Diego ‘sense of place’ with design and local dining/retail concepts
- T1: re-commitment to multiple operators, balance of local and national concepts
- Several models for small business participation
- T2 leases reaching maturity in 2022/23
- Phased development and renewal over next several years

Current State of the Business

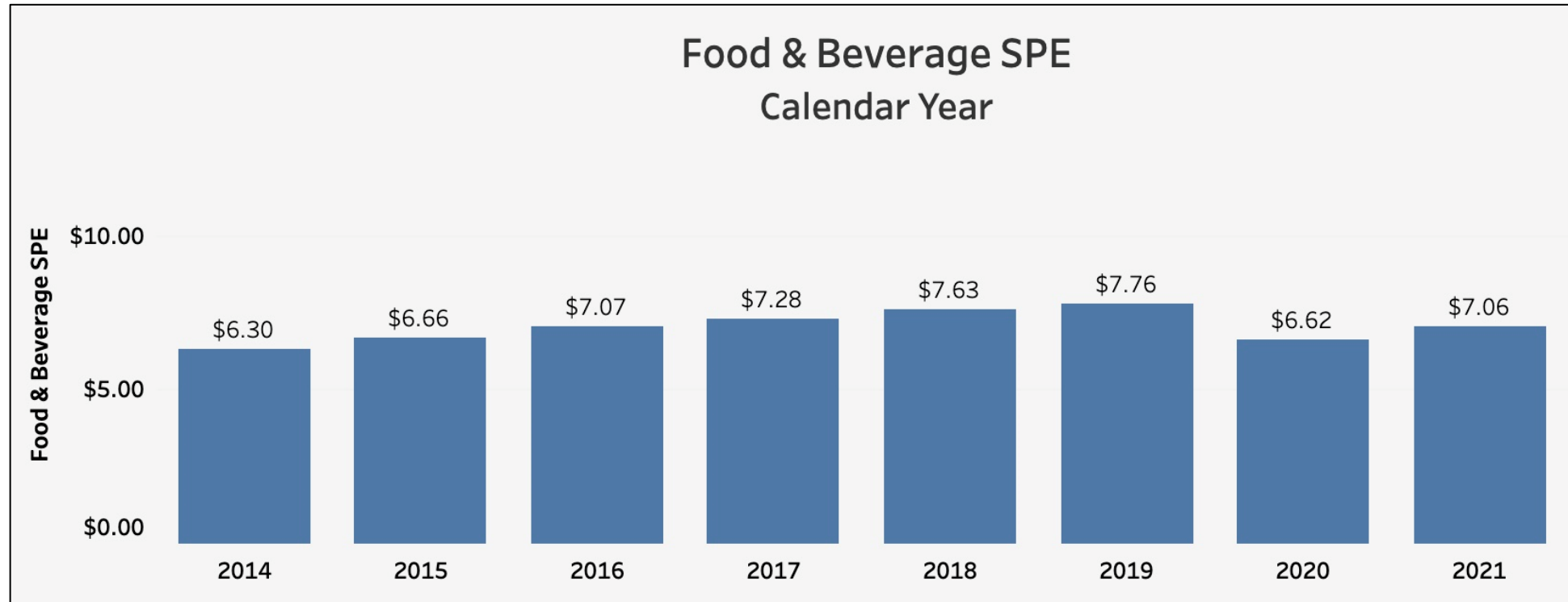
Departing Passengers = Our Customers

Millions of
Departing
Passengers
AIRPORT-WIDE



Sales per Departing Passenger

HISTORICALLY STRONG SALES



New T1 Offerings

T1 Dining & Retail

TRANSFORMATIVE ERA FOR SAN DIEGO

- \$3.4 billion investment in state-of-the-art terminal and landside/airside enhancements
- 1,000,000 square feet
- Two major carriers
- 24 new food & beverage locations
- Balanced program with casual dining/bar, QSR and gourmet coffee
- 10 new news/gift, convenience and specialty retail locations
- Carefully considered retail balance
- Total program ~ 70K square feet



RFP: Selecting New Concessions

APPLES TO ORANGES COMPARED TO THE STREET

- Concessionaires are selected based on competitive proposals
 - Concept/offering
 - Financial Strength
 - Revenue potential
 - Design/construction
- Most units/locations are offered in “packages”
- Leases typically 10+ years, no options to renew
- Rent paid as a percentage of sales, NOT per square foot. No Triple Net.
- Additional costs to consider in a proforma – CAM, centralized distribution, pest control, garbage removal, utilities
- Higher-than-typical labor costs

Opportunities for Business

DIFFERENT WAYS TO PARTICIPATE

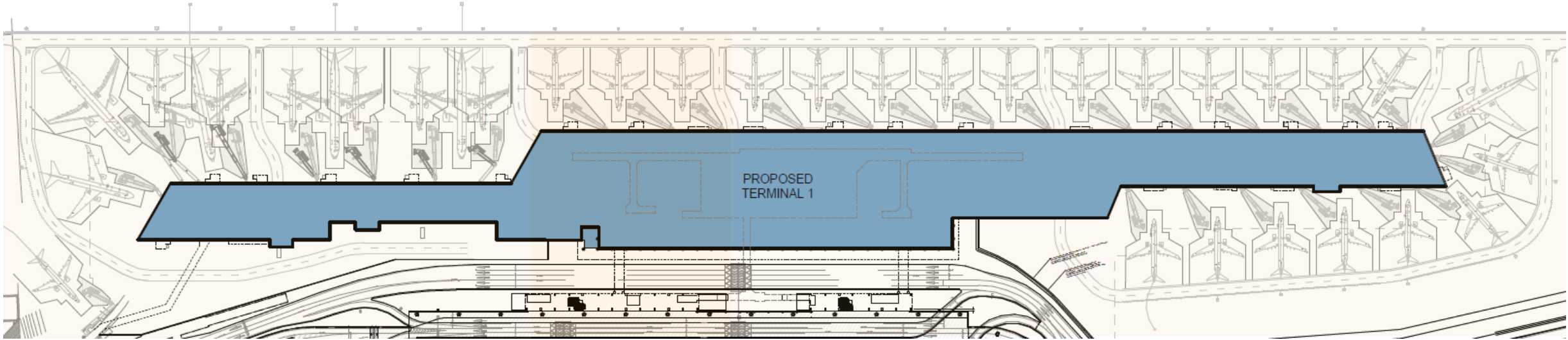
- Direct Lessee with Airport Authority
- Joint Venture Partner with Experienced Concessionaire
- Subtenant Lease under Experienced/Larger Concessionaire
- Brand Licensing Agreement

Business Outreach Effort

A SCHEDULE OF AIRPORT INDUSTRY, LOCAL AND VIRTUAL EVENTS

- Airport Experience Conference, March 2022
- Airports Council Intl' – NA, Business of Airports conference, June 2022
- Airport Diversity Conference (AMAC), June 2022
- **San Diego/Point Loma** Outreach Event, June 16, 2022
- **Chula Vista/National City** Outreach Event, July 6, 2022
- Virtual Events, July 18 & August 3, 2022
- **El Cajon/East County** Outreach Event, July 20, 2022
- **Escondido/North County** Outreach Event, July 26, 2022
- Subject-specific virtual workshops in August

New Terminal 1



3Q 2027

New Gates : 8

1Q 2026

New Gates: 3

2Q 2025

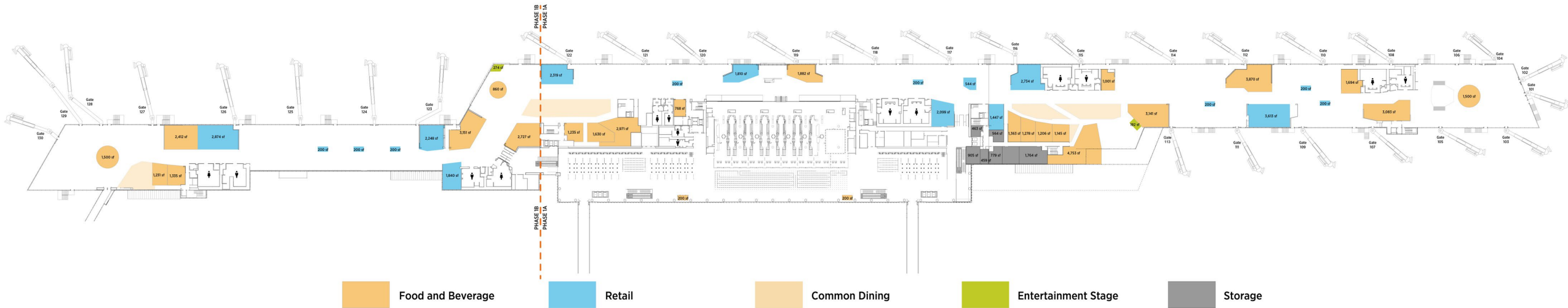
New Gates: 19

Total New T1 Gates: 30

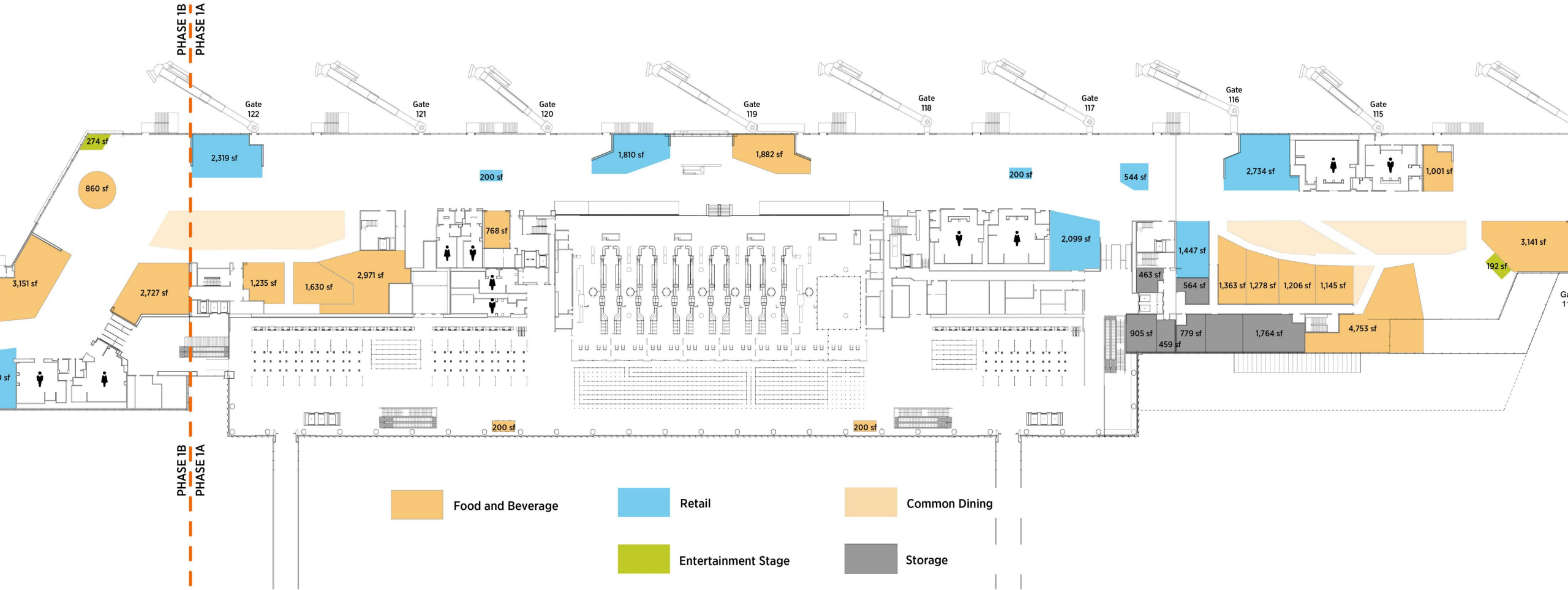
New T1 square footage: 1,000,000

Total Gates Airport-Wide (NT1 + T2): 62

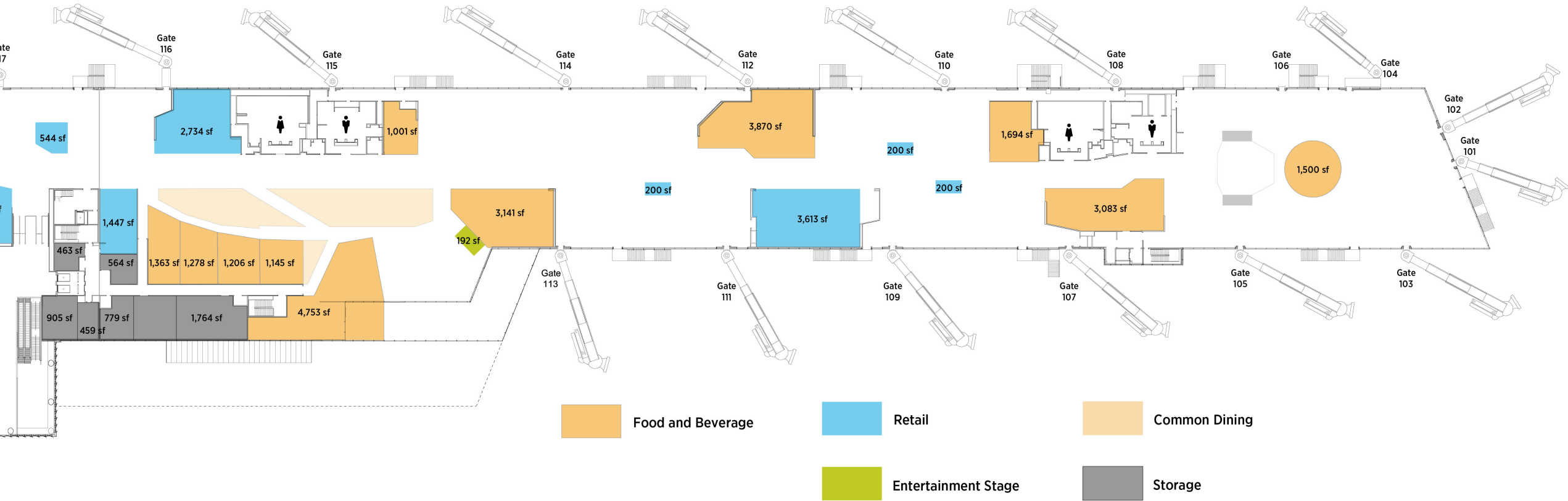
New Terminal 1 - Departure Level



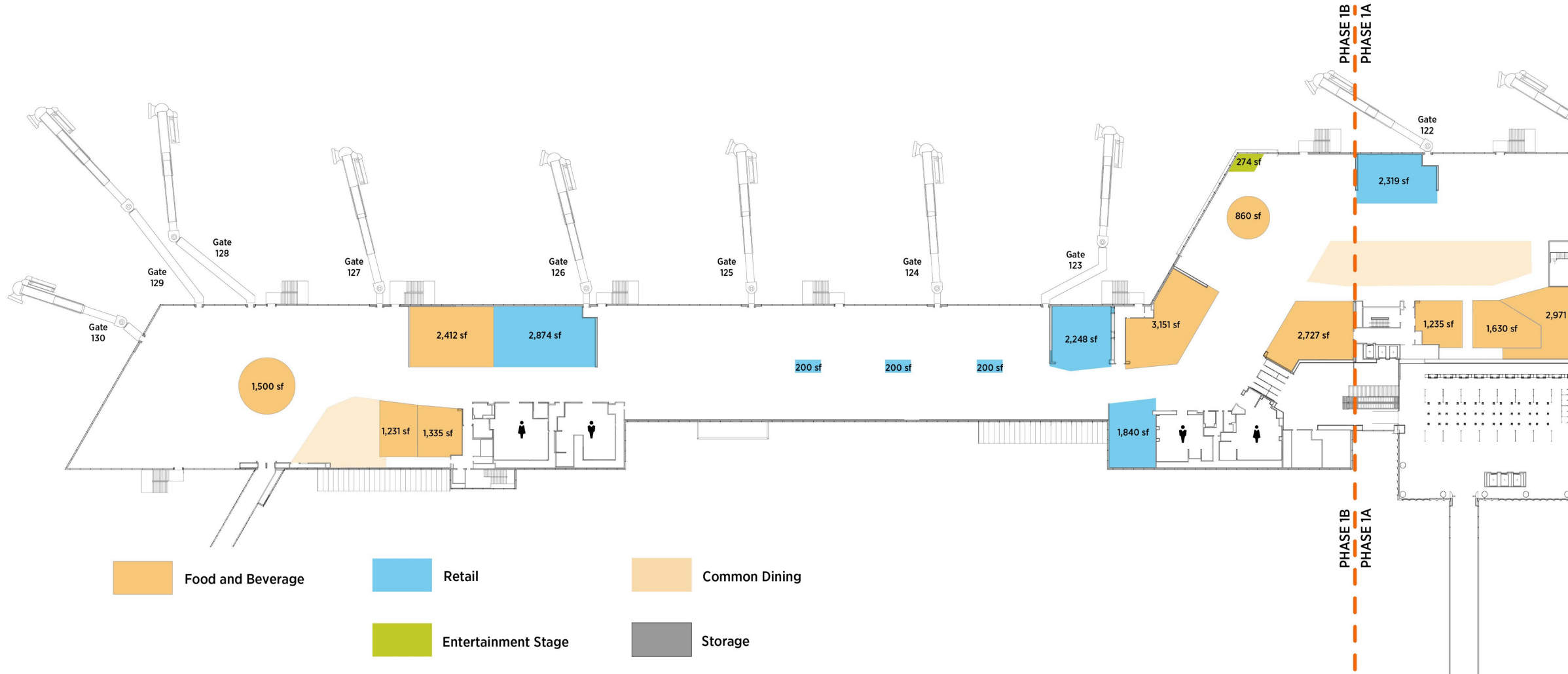
New Terminal 1 - Mid-Concourse



New Terminal 1 -East



New Terminal 1 - West



NOTE: Number, location and square footage of concession spaces may change

Restaurant & Retail Opportunities

FIVE NEW RFP PACKAGES – TWO DIRECT LEASE LOCATIONS

- Packages developed with balanced investment and sales potential in mind
- Unit locations designed with optimum sight-line focus
- Packaged units carefully balanced between high and moderate traffic areas
- Critical utility needs considered; brought to each location lease line
- Adequate and convenient storage available upon opening

Restaurant Opportunities

THREE MULTI-UNIT PACKAGES

Food Package #1	Food Package #2
Seven locations, 15,600 square feet	Seven locations, 13,468 square feet
Mix of fast food, gourmet coffee, casual dining/bar	Mix of fast food, gourmet coffee, casual dining/bar
Estimated 1 st Year Sales: \$20.6 M	Estimated 1 st Year Sales: \$23.8 M

Food Package #3

Seven Locations, 15,000 square feet

Mix of fast food, gourmet coffee, casual dining/bar

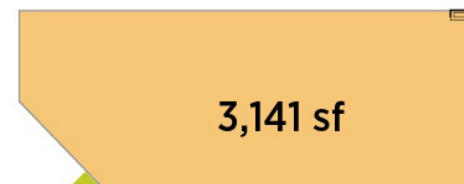
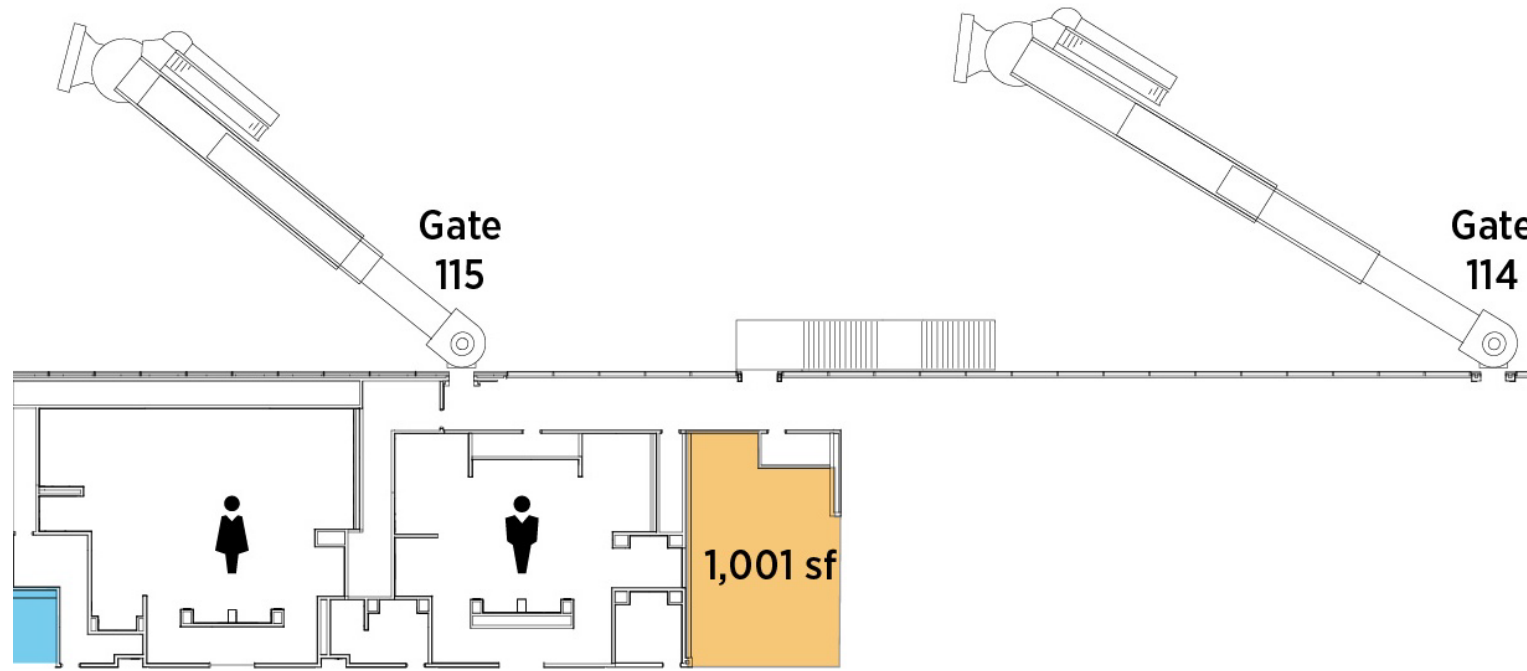
Estimated 1st Year Sales: \$22 M

A photograph of an aerial silk performer in a modern atrium. The performer is suspended in a purple silk hammock, holding onto the ropes with both hands and feet. The background features a large, multi-level atrium with a glass and steel structure, palm trees, and a balcony with people. The entire image has a warm, golden-yellow tint.

Package #4

Direct Lease Gourmet Coffee

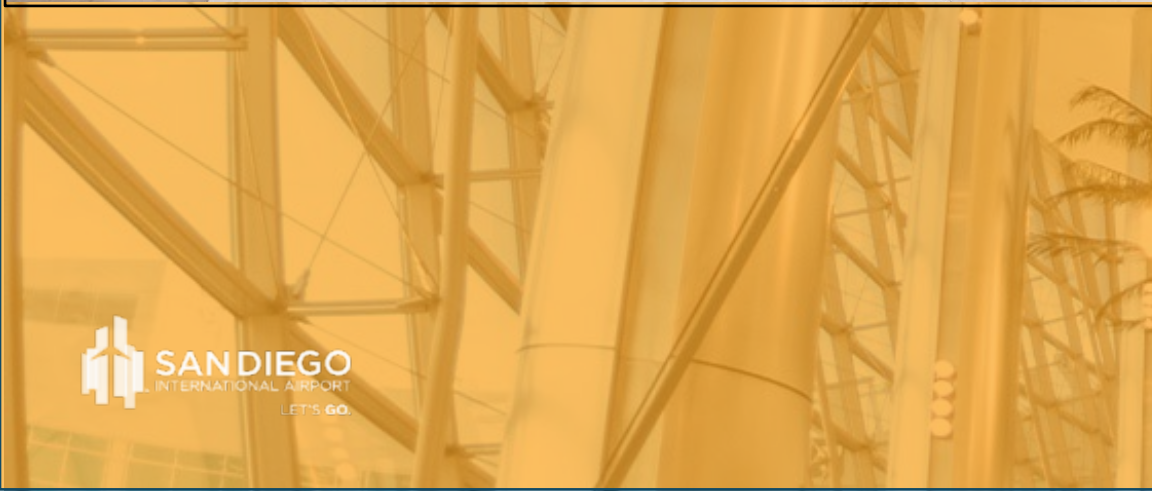
Small Business – Gourmet Coffee





Direct Lease Opportunity

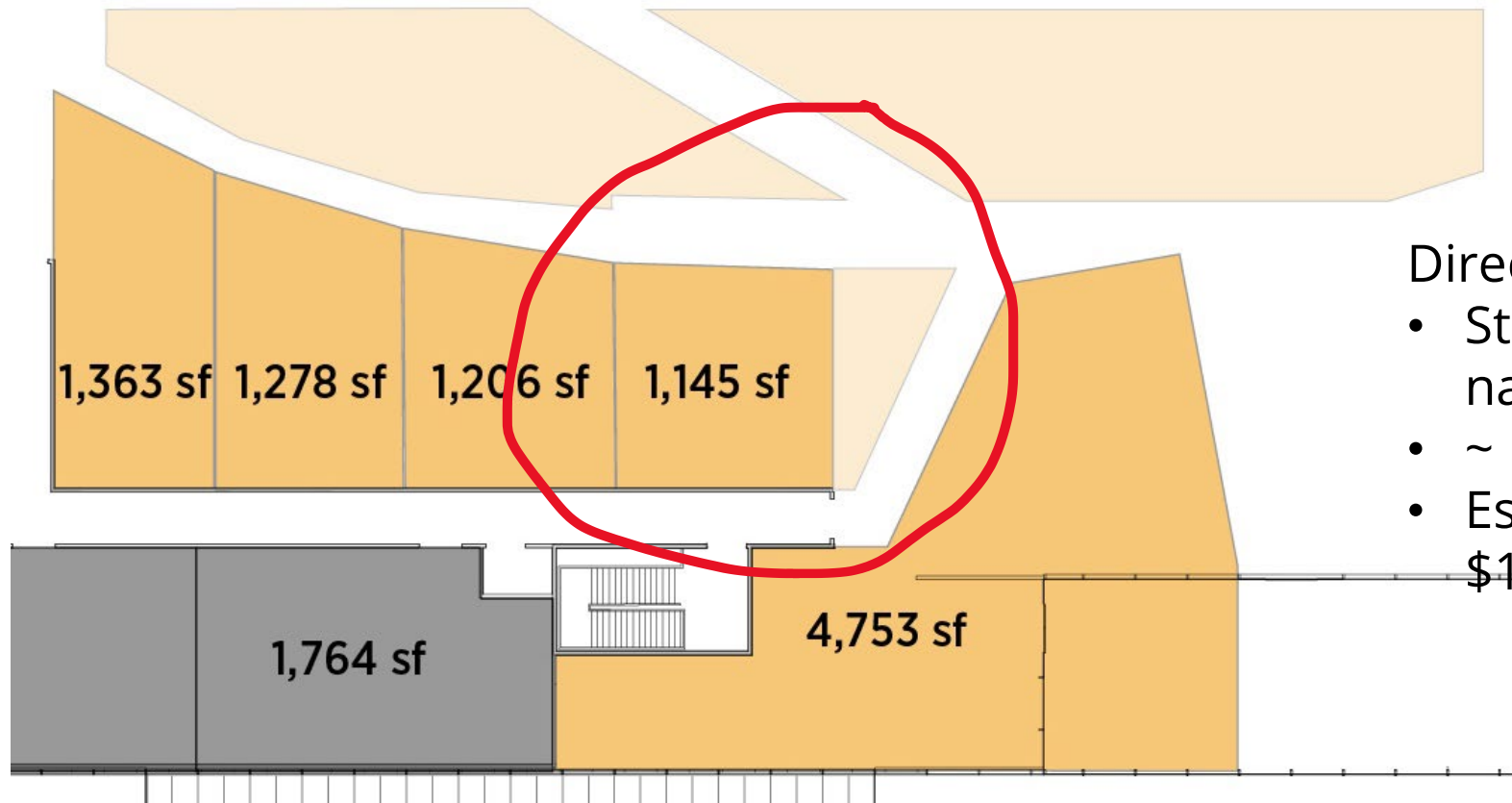
- Gourmet coffee, strong local brand preferred
- ~ 1,000 sf
- Est 1st Year Sales: \$1.3M



Package #5 Direct Lease QSR

Direct Lease – Quick Service

EAST FOOD COURT LOCATION



- Direct Lease Opportunity
- Strong local or national concept
 - ~ 1,145 sf
 - Est 1st Year Sales: \$1.3M

Retail/Convenience Opportunities

TWO MULTI-UNIT PACKAGES

Retail Package #1	Retail Package #2
Five locations, 10,738 square feet	Five locations, 12,000 square feet
Mix of news/gift, convenience, specialty	Mix of news/gift, convenience, specialty
Estimated 1 st Year Sales: \$19.2 M	Estimated 1 st Year Sales: \$20.5 M

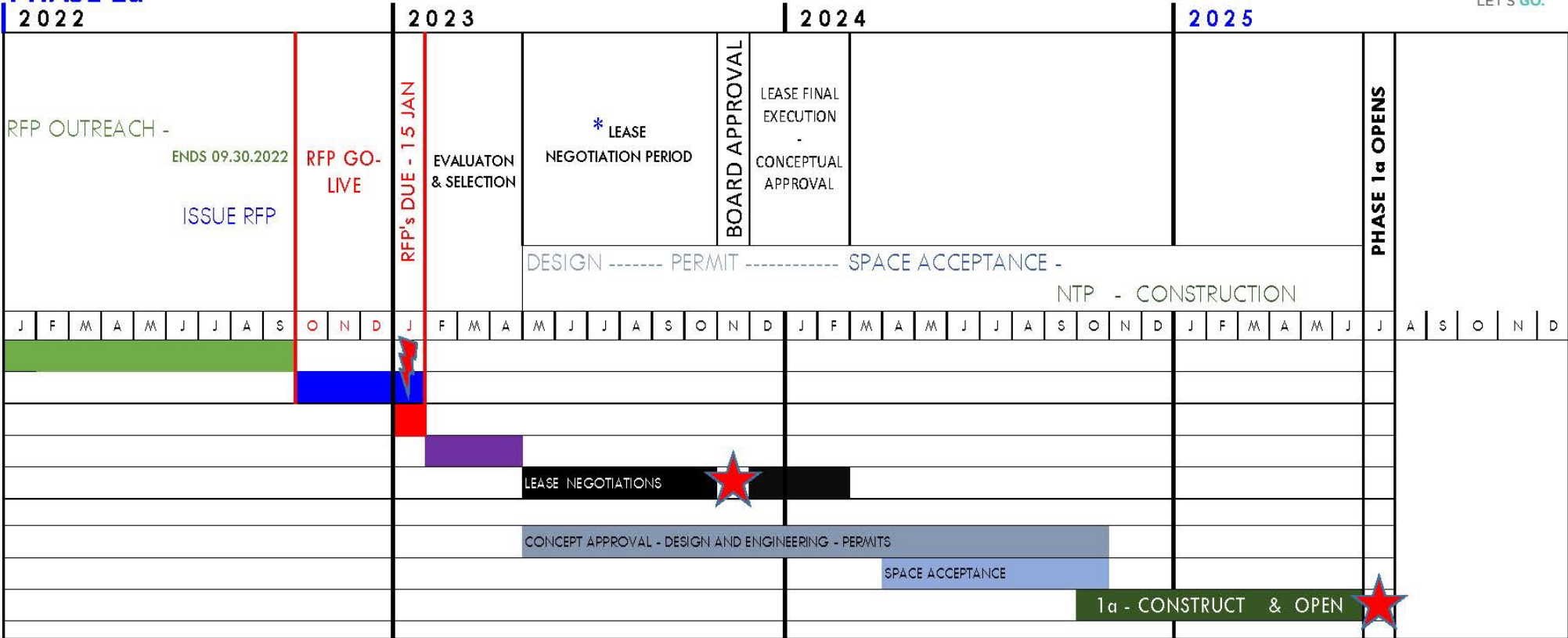
Schedule

SAN - NEW TERMINAL 1 - CONCESSIONS PROJECT SCHEDULE

PROPOSED DRAFT SCHEDULE



PHASE 1a



**Schedule subject to change*

A photograph of two young children, a girl and a boy, wearing straw hats and striped shirts, looking out of an airport window. The girl is on the left, wearing a yellow and white striped shirt and a straw hat with a floral band. The boy is on the right, wearing a red and white striped shirt and a straw hat with a black band. They are leaning on a metal railing. Outside the window, a white airplane is visible on the tarmac, along with other airport equipment and buildings under a bright sky.

Questions?

Local and Virtual Outreach Events – Summer 2022

Register for more information:

www.newT1.com/business-opportunities

Small Business Update

Maria Quiroz, Small Business Development Program Manager

New T1 Administration Building

PROJECT OVERVIEW

Sundt Commitments	Small Business Enterprise (SBE) 25% Local Business Enterprise (LBE) 75% Veteran Owned Small Business (VOSB/SDVOSB) 35%
Subcontracted to Date	\$46 million
Attainments to Date	Small Business Enterprise (SBE) 24% (\$18 million) Local Business Enterprise (LBE) 24% (\$18 million) Veteran Owned Small Business (VOSB/SDVOSB) 0.6% (\$440 thousand)



New T1 Terminals & Roadways

PROJECT OVERVIEW

ARRIVE Commitments	Small Business Enterprise (SBE) 25% Local Business Enterprise (LBE) 80% Veteran Owned Small Business (VOSB/SDVOSB) 3%
Subcontracted to Date	\$1.3 Billion
Attainments to Date	Small Business Enterprise (SBE) 17% (\$228 million) Local Business Enterprise (LBE) 73% (\$949 million) Veteran Owned Small Business (VOSB/SDVOSB) 4.7% (\$61 million)



New T1 Airside Improvements

PROJECT OVERVIEW

Griffith Commitment	Disadvantaged Business Enterprise (DBE) 3.5%
Subcontracted to Date	\$8.8 million
Attainments to Date	0.4% (\$39 thousand)



Thank You

New Terminal 1

Sustainable & Resilient Design



Authority Advisory Committee Meeting

Brendan Reed

Director of Airport Planning & Environmental Affairs

July 20, 2022

Sustainable at its Core

- **Linear Terminal Design** - avoids need for airfield alleyways
- **New Taxiway A** - allows bidirectional aircraft flow
- **Hydrant Fueling** - replaces tanker trucks
- **On-Airport Roadway** - removes traffic from City streets & completes TLR loop
- ***Additional Sustainability & Resiliency Elements***



Sustainable Energy

NEW
T1

Energy Efficiency

- Established an EUI target: *45 kBtu/square foot*
- Installing a highly-efficient heat recovery chiller
- Extensive sub-metering for all utilities

Renewable Energy

- Grid-delivered, carbon-free electricity through SDCP
- Designed to accommodate a 4 MW Solar PV & 4 MWh BESS

Other Components

- Pursuing LEED, Parksmart, Envision, & RELi certifications
- Incorporated 179D monetization into contract terms



Water Stewardship

NEW
T1



Water Quality & Conservation

- Installing an additional 1.5-million-gallon cistern
- Capturing storm water from 150+ acres for reuse
- A/C condensate from Passenger Boarding Bridges also plumbed to reuse system
- Water reused in Central Plant and to flush toilets

Resiliency

- New Terminal, Parking Plaza, & roadways designed to be resilient to SLR conditions in Year 2100
- Designed to be compatible with future Pure Water San Diego reclamation facility

Clean Transportation

NEW
T1



Gate Electrification

- All gates equipped with ground power & pre-conditioned air
- 5 charging ports per gate (on average) for electric GSE
- Airlines transitioning to electric & renewable diesel by 2024

Electric Vehicles

- Approximately 260 Level 2 charging ports in new Parking Plaza (w/ another 260 pre-wired)
- Approximately 9 DCFC ports to support Taxis & TNCs
- Conversion of all airport shuttles to electric (33 in service now)

Bicycle Infrastructure

- Approximately 250 bike rack and 30 bike locker stalls
- New bike paths or cycle-tracks on N. Harbor, Pac Hwy, & Grape

Clean Transportation

NEW
T1



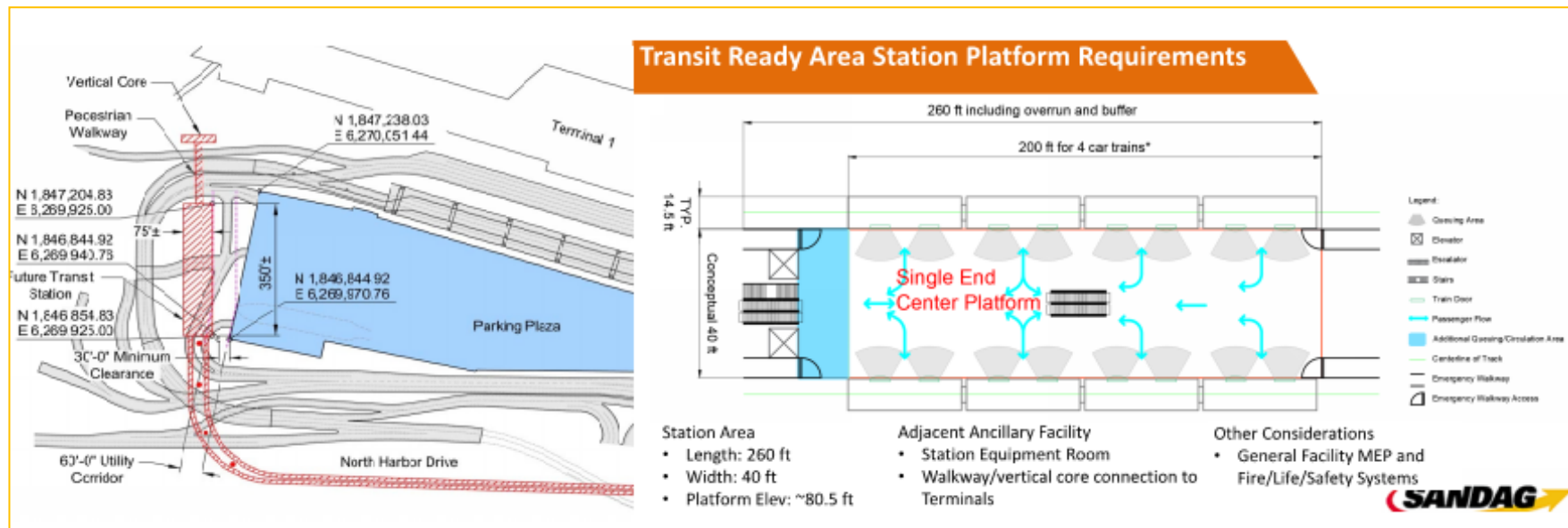
- Complimentary all-electric shuttle service from Old Town

Clean Transportation

NEW
T1

Future Fixed-Rail Connection

- Preserved transit station area at SAN terminals to meet SANDAG specifications
- Modified NT1 On-Airport Roadway's design to allow rail crossing underneath
- Ensured adequate space for future rail's support columns and construction area
- Negotiated up to \$350 million contribution from airlines (requires regional match)





Thank You!