

Safety of Flight

Go-Arounds and Missed Approaches

Presented to: Airport Noise Advisory Committee (ANAC)

By: Dave Foyle, General Manager, Los Angeles District

Date: June 19, 2019



**Federal Aviation
Administration**

Go-Around vs. Missed Approach

Safety is the primary reason for the initiation of a Go-Around or Missed Approach.



Go-Around vs. Missed Approach Cont...

Go-Around

- A pilot initiated or Air Traffic Control (ATC) initiated instruction for a pilot to abandon his/her approach to landing. Additional instructions by ATC are required for aircraft on a Visual Approach (VA).
- A pilot on an Instrument Flight Rule (IFR) flight plan conducting an instrument approach (Localizer/RNAV) when instructed to “go around” should execute the published missed approach procedure or proceed as instructed by ATC.



Go-Around vs. Missed Approach Cont...

Missed Approach

- A maneuver conducted by a **pilot** when an instrument approach cannot be completed to a landing. The route of flight and altitude are shown on instrument approach procedure charts. A pilot executing a missed approach prior to the Missed Approach Point (MAP) must continue along the final approach to the MAP.
- **Note** – *MAP: A point prescribed in each instrument approach procedure at which a missed approach procedure shall be executed if the required visual reference does not exist.*



San Diego Localizer RWY 27 Missed Approach

SAN DIEGO, CALIFORNIA

AL-373 (FAA)

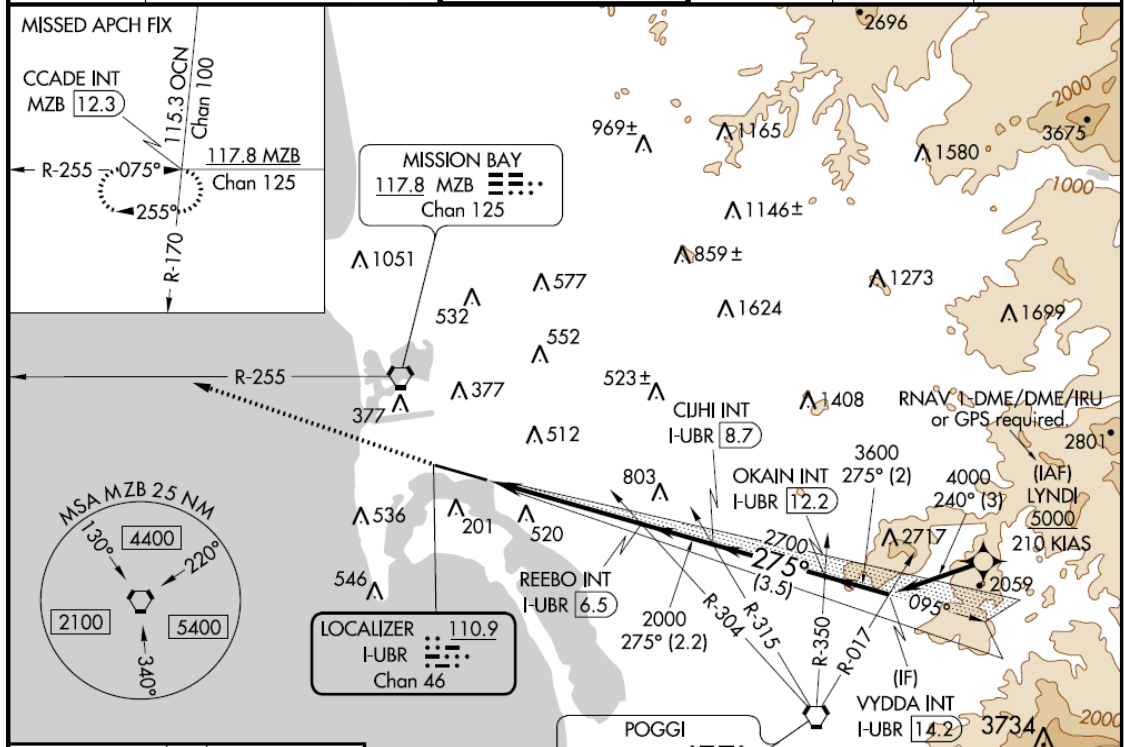
17173

LOC/DME I-UBR 110.9 Chan 46	APP CRS 275°	Rwy Idg 7590 TDZE 17 Apt Elev 17
---	------------------------	---

LOC RWY 27
SAN DIEGO INTL (SAN)

<p>▼ Rwy 27 helicopter visibility reduction below RVR 4000 NA. ▲ Circling NA north of Rwy 9-27. For inop ALS, increase S-27 Cats C and D visibility to 1% SM.</p>	<p>MALS A4</p>	<p>MISSED APPROACH: Climb to 2500 on heading 275° and on MZB VORTAC R-255 to CCADE INT/MZB 12.3 DME and hold.</p>
---	--------------------	--

D-ATIS 134.8	SOCAL APP CON 119.6 363.1 (WEST) 124.35 279.625 (EAST)	LINDBERGH TOWER 118.3 338.225	GND CON 123.9	CLNC DEL 125.9	CPDLC
------------------------	--	---	-------------------------	--------------------------	-------



MISSED APPROACH:
Climb to 2500 on heading 275 and on MZB VORTAC R-255 to CCADE INT/MZB 12.3 DME and hold.

SW-3, 23 MAY 2019 to 20 JUN 2019



Federal Aviation Administration

Reasons for a Go-Around or Missed Approach

Go-Around (Pilot or ATC)

- **The Runway is unsafe for landing.** (A/C, personnel, equipment, wildlife, foreign object debris)
- **Weather Conditions preclude a safe landing.** (wind, lose sight of airport)
- **Landing Gear not properly deployed.**
- **Compression on final.**
- **Unstable Approach.** (too high/too fast)

Missed Approach (Pilot)

- **The Runway is unsafe for landing.** (A/C, personnel, equipment, wildlife, foreign object debris)
- **Weather Conditions preclude a safe landing.** (ceilings, wind)
- **Visual Requirements not met.**
- **Company mandated safety requirements not met.** (too high/too low, unstable approach).



Lindbergh Field Operations May 2019

Number of Completed Landings:

9531



Lindbergh Filed Operations May 2019 Cont...

Total Go-Around/Missed Approaches:

51



Lindbergh Field Operations May 2019 Cont...

Total **Pilot** Initiated Go-Around/Missed Approaches:

24



Lindbergh Field Operations May 2019 Cont...

Number of **ATC** Initiated Go-Around Approaches:

27



Go-Arounds/Missed Approach Statistics

By the Numbers May 2019:

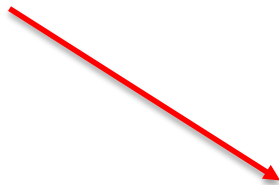
- 9531 total landings
- 51 go-around/missed approaches (0.54%)
- 24 Pilot Initiated (0.25%)
- 27 ATC Initiated (0.28%)



Core-30 Go-Around Data 5/1/18 – 5/1/19

Rank	Airport	Taxi Time-Out	Dep. Delays	Diversions	Go-Arounds	Taxi Time-In
1	DEN	17.83	1,473	1,101	1,770	8.77
2	ORD	22.96	21,601	1,892	1,721	13.81
3	ATL	17.1	7,649	1,126	1,128	8.9
4	SFO	23.14	13,969	329	1,128	9.04
5	DCA	19.71	4,371	669	1,028	6.82
6	CLT	20.21	3,462	898	1,014	12.6
7	DFW	18.59	12,131	1,728	993	12.18
8	LGA	26.62	18,276	902	976	8.88
9	MIA	19.09	6,393	607	962	9.84
10	DTW	18.96	1,532	309	929	8.43
11	LAX	18.54	7,162	417	925	11.69
12	PHL	22.44	11,509	432	916	8.07
13	JFK	27.72	19,331	571	854	10.66
14	LAS	15.73	5,865	627	740	7.03
15	SLC	18.15	80	380	739	6.95
16	BWI	14.24	1,339	503	700	5.73
17	EWR	24.3	12,510	978	679	9.89
18	MSP	19.35	1,168	520	662	5.91
19	BOS	19.14	3,791	433	638	8.22
20	FLL	17.42	4,486	559	628	7.2
21	SEA	19.51	7,873	540	610	9.89
22	PHX	15.15	2,494	566	579	7.65
23	MCO	15.85	1,953	722	578	9.65
24	SAN	17	989	272	561	4.45
25	MDW	12.65	345	593	507	6.04
26	IAD	21.01	4,062	480	457	6.15
27	MEM	15.46	38	625	441	9.17
28	IAH	19.29	7,896	897	386	8.45
29	TPA	13.47	10	393	297	5.32
30	HNL	15.45	39	109	0	7.15
	Total	19.33	65,574	6,914	9,528	9.15

San Diego (SAN) 24 out of 30 airports for total Go-Arounds with 561.



Questions?

