



Airport Noise Advisory Committee

December 21, 2016

Agenda

1. Welcome and Introductions
2. Presentation Items
 - a. Quieter Home Program Update
 - b. Curfew Violation Review Panel
 - c. Missed Approach
 - d. Early Turn Statistics
 - e. Metroplex Update
 - f. Noise Complaint Statistics
 - g. Fly Quiet Report
3. Public Comment
4. Approval of October 18, 2016 Minutes
5. Information Items
 - Subcommittee Update
 - Airport Authority Update
6. New Business
7. Next Meeting: February 15, 2016
8. Adjourn



Quieter Home Program Update

PROGRAM STATISTICS	
Applicants / Homes on the Wait List	672/1,441
Homes Completed in October & November 2016	0
Estimated Homes to Complete in CY 2016	136
Total Completed Homes (through November 30, 2016)	3,453

Updates

- Revised construction contract documents to FAA Specifications.
- Submitted two packages (137 units) for FAA design review and approval.
- Meeting with FAA ADO representatives earlier today to discuss designs, contract documents and plan to move forward.

3

Curfew Violation Review

Curfew Violations for October – November, 2016

Date	Time	Runway	Flight ID	ID	Aircraft Type	Penalty
10/22/2016	1:05	27	Allegiant Air 4102	AAL	MD-83	\$2,000
11/7/2016	23:35	27	WestJet Airlines 4265	WJA	Boeing 738	No Penalty, local maintenance issue
11/19/2016	23:35	27	Frontier Airlines 1746	FFT	Airbus 319	Potentially \$2,000
11/27/2016	1:58	27	N620PJ	N620PJ	CL-600	Potentially \$2,000
11/27/2016	23:48	27	Southwest Airlines 4887	SWA	Boeing 737	Potentially \$6,000

4

Curfew Violation Review Panel Stats

Year	Total Curfew Violations
2012	36
2013	60
2014	47
2015	55
2016	55*

*Through November 30, 2016

5

Definition: Missed Approaches

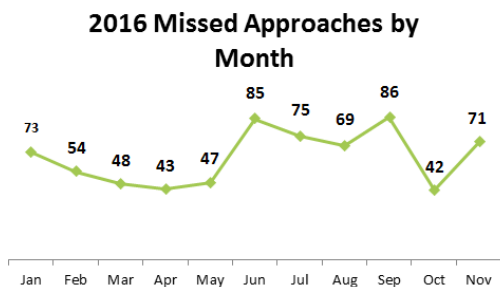
Commonly referred to as a "Go-Around," a missed approach occurs when an aircraft cannot complete its landing and is required to make another attempt. It can be caused by:

- Inclement weather conditions
- Debris on the runway
- ATC separation of aircraft, slower aircraft unable to exit airspace or runway, forcing larger aircraft to go around

Missed approaches are safety operations that the Authority cannot influence.

6

Missed Approach Statistics

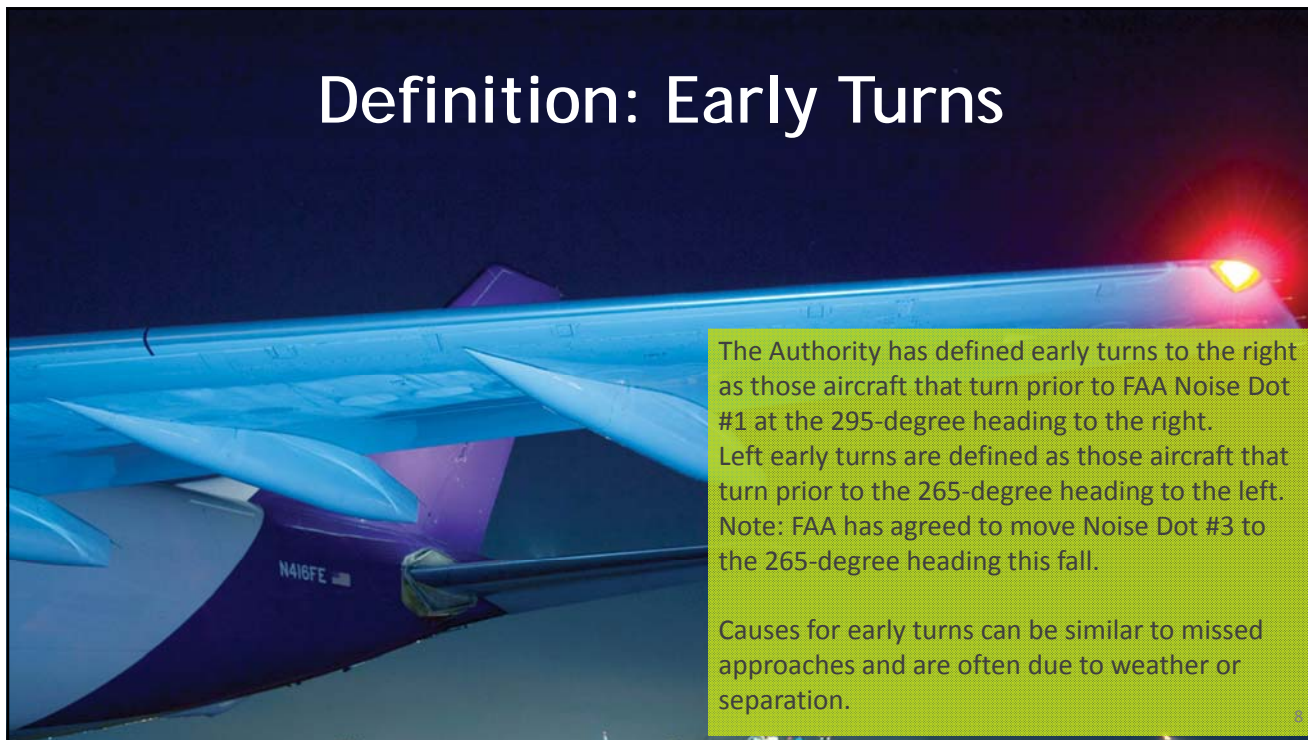


Year	Total Missed Approaches	Total Arrivals	Total Arrivals that are missed approaches
2012	692	93,126	0.7%
2013	659	93,985	0.7%
2014	637	95,881	0.7%
2015	748	96,856	0.8%
2016*	693*	90,367*	0.8%

*Through November 30, 2016

Of the 113 Missed Approaches in October & November, **89 were compliant with the FAA Noise Dots.**

Definition: Early Turns



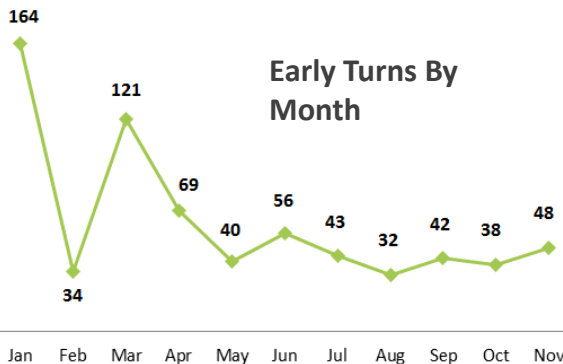
The Authority has defined early turns to the right as those aircraft that turn prior to FAA Noise Dot #1 at the 295-degree heading to the right. Left early turns are defined as those aircraft that turn prior to the 265-degree heading to the left. Note: FAA has agreed to move Noise Dot #3 to the 265-degree heading this fall.

Causes for early turns can be similar to missed approaches and are often due to weather or separation.

Early Turn Statistics

Year	Below 6,000'	All Altitudes
2012	316	538
2013	200	829
2014	338	1,105
2015	467	1,293
2016	488*	687*

*Through November 30, 2016



In October & November of 2016 there were

15,811

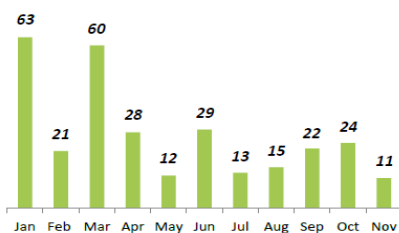
Departures to the west.

0.5%

Were early turns.

Early Turn Statistics - Left

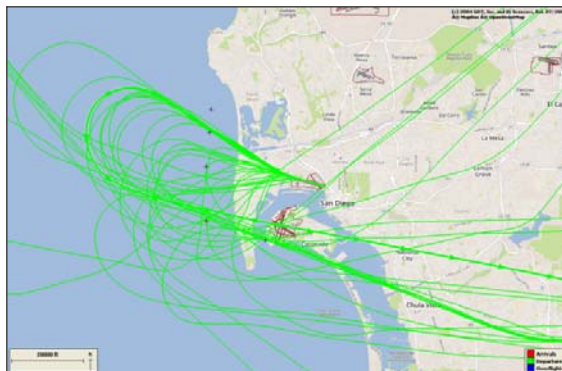
Over Point Loma



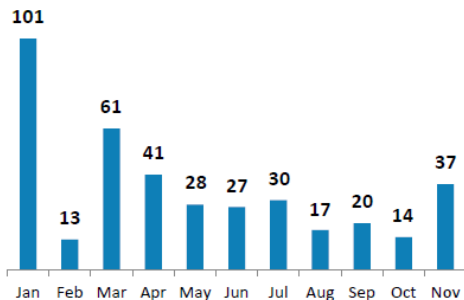
Count	Airline	Aircraft
10	General Aviation	-
7	Southwest Airlines	B737
6	United Airlines	A320, B737, B738, B739
3	Delta Air Lines	B739, B752
2	Alaska Airlines	B739
2	jetBlue Airways	A320
2	Air Canada Rouge	A319
1	Aeromexico	E190
1	American Airlines	B738
1	Frontier Airlines	A319

October & November 2016

- Decreased significantly over this time last year (35 vs. 107 in 2015)
- Two less than the previous two months



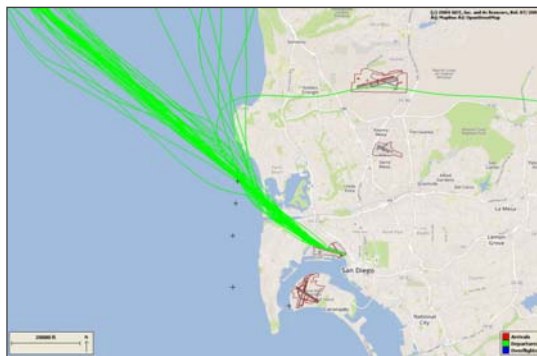
Early Turn Statistics - Right



Count	Airline	Aircraft
22	General Aviation	-
13	United Airlines	A319, A320
9	Southwest Airlines	B737
3	SkyWest Airlines	CRJ7, E75L
2	Delta Air Lines	A319
1	Compass Airlines	E75L
1	Virgin America Inc.	A320

October & November 2016

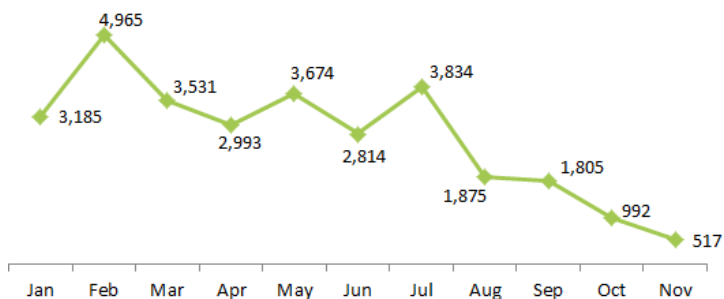
- Tracking lower than last year (51 vs. 84 in 2015)
- Higher than previous two months (by 14)
- Very close to noise dot #1



11

Noise Complaint Statistics

2016 Noise Complaints by Month



YEAR	Total Noise Complaints
2012	232
2013	172
2014	156
2015	3,926
2016	30,185*

*Through November 30, 2016

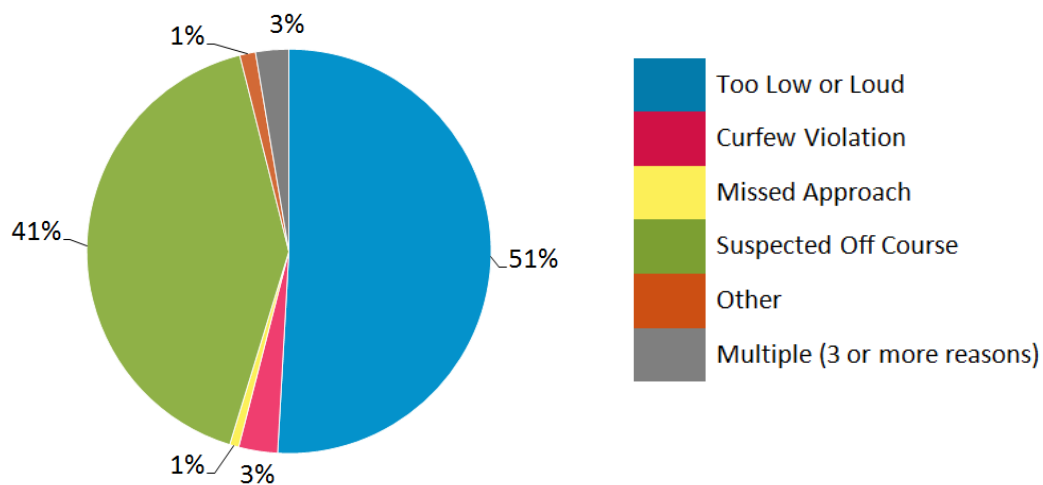
12

Top 5 Noise Events (most complaints)

Date of Noise Complaint	Noise Complaint Event Time	Noise Event	Number of Complaints
10/18/2016	5:01 a.m.	Medical Emergency Flight	5
10/27/16	9:47 a.m.	Missed Approach, traffic separation from departing aircraft	5
11/27/2016	11:31 p.m.	Southwest Airlines Departure, actual departure time 11:29 p.m.	5
10/10/16	7:25 p.m.	FedEx DC10 departure, compliant with Noise Dots and overflew LOWMA	4
10/22/16	1:06 a.m.	Allegiant Air Football Charter, curfew violation	4
11/27/16	11:48 p.m.	Southwest Airlines, curfew violation	4

13

**Breakdown of Complaint Reasons
October – November 2016**



14



Neighborhood	Number of Complaints
Point Loma Heights	599
Sunset Cliffs	471
La Jolla Mesa	118
Wooded Area	115
Fleetridge	50
La Playa	40
Loma Portal	35
Ocean Beach	30
Mission Beach	13
North Park	7
Bonita	6
Midtown	5
Encanto	3
Bird Rock	3
La Mesa	3
Pacific Beach	3
El Cerrito	2
Liberty Station	2
South Park	2
Alpine	1
Coronado	1
Serra Mesa	1
Total	1,509

Noise Complaints by Area

Fly Quiet Overview

3rd Quarter 2016 Overview

This is a baseline report that establishes a starting point for working with each operator.

Based on three elements currently most concerning to community, Early Turns, Curfew Violations, and Fleet.

In 2016, met with all commercial and cargo operators at the Airport to explain program and all three elements.

Touched base with them on specific fleet information.

This program can be fluid and adjusted as noise concerns evolve.

Fly Quiet Score: Fleet



Fleet Score:

FAA Certified Noise Level for each aircraft
Multiplied by the percentage of operations for the quarter.

Resulting "sub-scores" range from 0 – 25 the higher number = quieter aircraft.

Sub-score ranges given scores 0 (lowest) to 10 (highest).

Fly Quiet Score: Early Turns

Early Turn Score:

Operator starts with 10 points.
- 0.5 Point Per Early Turn Within 1,500 Feet from Any Noise Dot
- 1.0 Point Per Early Turn Greater Than 1,500 Feet from Any Noise Dot

Note: In future, points will not be counted if FAA directs the plane to turn.

Airlines	Number of Early Turns	Early Turn Score
Alaska	0	10.0
Virgin America	0	10.0
Compass Airlines	0	10.0
Frontier Airlines	0	10.0
WestJet	0	10.0
UPS	0	10.0
Japan Airlines	0	10.0
British Airways	0	10.0
Sun Country Airlines	0	10.0
Hawaiian Airlines	0	10.0
Allegiant Air	0	10.0
Atlas Air	0	10.0
Volaris	0	10.0
Spirit	1	9.0
Skywest Airlines	1	9.0
Rouge Air Canada	2	9.0
FedEx	2	8.5
jetBlue	3	8.0
Delta Air Lines	7	5.5
American Airlines	8	5.0
Southwest	11	2.0
United	17	2.0

Fly Quiet Score: Curfew Violations

