

QUIETER HOME PROGRAM



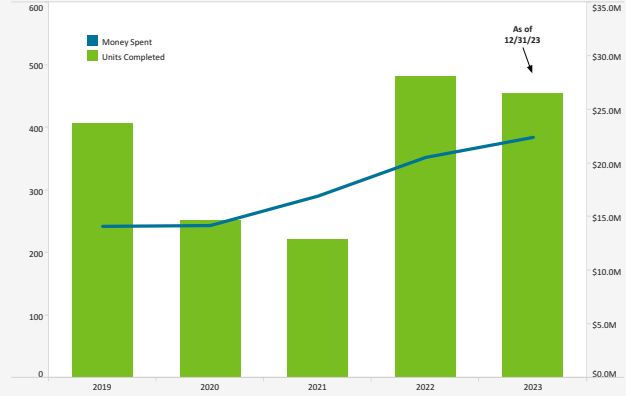
Quieter Home Program As Of: 12/31/2023

Status of Homes	
Homes Completed this Month	6
Added this Month	10
Homes on Wait List	391
Estimated Homes to Complete in CY 2023	400
Total Homes Completed	5,601
Amount Spent on Multi-Family Units (USD) this Month	34,067

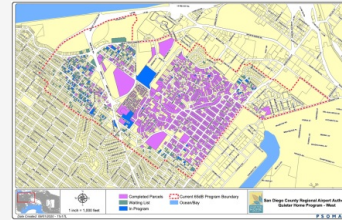
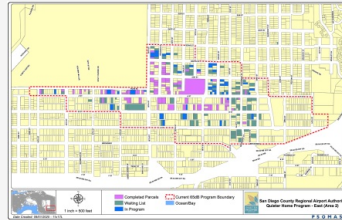
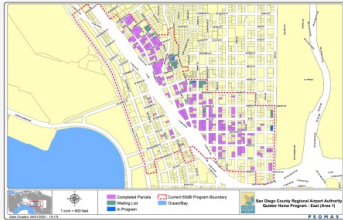
Project	Estimated Construction Start	# Homes
12.3	In Process	37
12.4 (QNRP)	In Process	3
12.5 (QNRP)	Winter 2024	3
12.6	In Process	62
12.7	In Process	34
12.8	Spring 2024	12
12.9	Spring 2024	36
12.10	Winter 2024	34
12.11	Spring 2024	25
12.12	Spring 2024	29
13.1	Summer 2024	30
13.2	Summer 2024	27
13.3	Summer 2024	25
13.4	Fall 2024	24
13.5	Winter 2024	36
13.6	Winter 2025	33
13.7	Winter 2025	30
13.8	Spring 2025	37
13.9	Spring 2025	35
13.12	Fall 2025	25

QNRP: Quieter Non-Residential Program

From 2001 – 2009, \$89.8 Million Was Spent To Complete 1,334 Homes



Program Boundary Maps



Data Disclaimer: We do our best to ensure that the data we release is complete, accurate and useful. However, because we do not create the data, and because the processing required to make the data useful is complex, we are not liable for omissions, inaccuracies or changes in the data.

CURFEW VIOLATIONS



Noise Curfew Violations: Any aircraft that departs after 11:30 p.m. and before 6:30 a.m. is subject to a penalty.

Curfew Violations (November - December 2023)

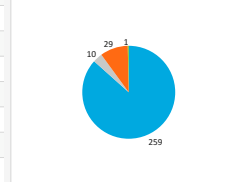
Date, Time	Airline	Aircraft Type	Status
11/5/2023, 11:47 PM	United Airlines	B752	Not Fined
11/14/2023, 11:47 PM	United Airlines	B39M	Pending Review
11/15/2023, 11:31 PM	Alaska Airlines	B39M	Pending Review
11/15/2023, 11:34 PM	United Airlines	B752	Pending Review
11/16/2023, 12:30 AM	jetBlue Airways	A320	Pending Review
11/19/2023, 12:36 AM	United Airlines	B752	Pending Review
11/20/2023, 11:59 PM	Alaska Airlines	B738	Pending Review
11/21/2023, 11:30 PM	United Airlines	B739	Pending Review
11/26/2023, 12:49 AM	Allegiant Air	A320	FINED - \$6,000
12/9/2023, 06:07 AM	Spirit Airlines	A20N	Pending Review
12/11/2023, 12:27 AM	United Airlines	B752	Pending Review
12/18/2023, 11:41 PM	jetBlue Airways	A321	Pending Review
12/21/2023, 11:33 PM	SkyWest Airlines	E75L	Pending Review
12/22/2023, 11:54 PM	SkyWest Airlines	E75L	Pending Review
12/23/2023, 12:02 AM	Alaska Airlines	B39M	Pending Review
12/24/2023, 11:30 PM	Alaska Airlines	B739	Pending Review
12/27/2023, 12:48 AM	Alaska Airlines	B739	Pending Review

Annual Violations and Penalties Assessed (Year-to-Date)

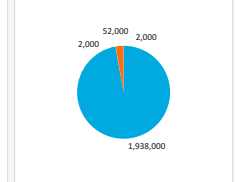
Year	Total Violations	Fines Assessed
2019	46	\$132,000
2020	18	\$16,000
2021	52	\$204,000
2022	89	\$804,000
2023	141	\$972,000

Airline Category
 A - Air
 C - Cargo
 G - G/A
 M - Mil

Violations by Airline Category (2020 - Present)

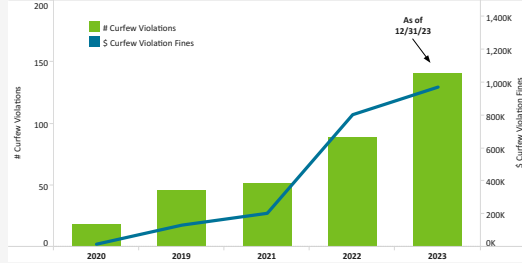


Fines Assessed by Airline Category (2020 - Present)



Airline Category	# Curfew Violations	\$ Curfew Violation Fines
A - Air	259	\$1,938,000
C - Cargo	10	\$2,000
G - G/A	29	\$52,000
M - Mil	1	\$2,000

Curfew Violations and Penalties Assessed (by Year)



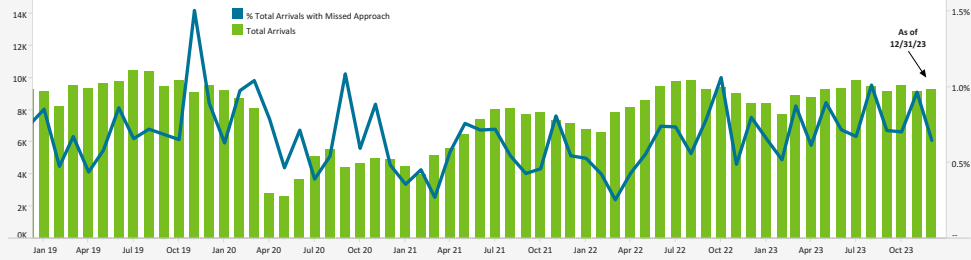
Data Disclaimer: We do our best to ensure that the data we release is complete, accurate and useful. However, because we do not create the data, and because the processing required to make the data useful is complex, we are not liable for omissions, inaccuracies or changes in the data.

MISSED APPROACH STATISTICS



Missed Approaches: A procedure to maintain safety, initiated by the pilot or Air Traffic Control (ATC) for a pilot to abandon the approach to landing.

Total Arrivals Compared to (%) of Missed Approaches

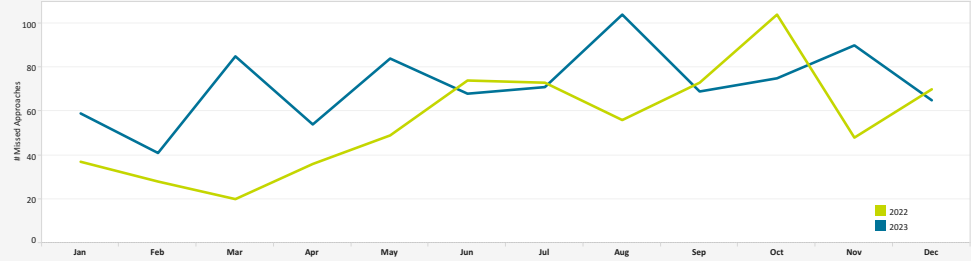


	2019	2020	2021	2022	2023
% Total Arrivals with Missed Approach	0.8%	0.7%	0.6%	0.6%	0.8%
Total Arrivals	114,193	64,576	79,016	102,974	108,562
Total Missed Approaches	895	508	470	668	865

Missed Approach Location Statistics

	Oct		Nov		Dec			Oct	Nov	Dec
	Day	Night	Day	Night	Day	Night				
Between Noise Dot #1 - Noise Dot #2	2	0	1	3	0	0	Between 265°-295° Heading (Standard)	35	52	27
Between Noise Dot #2 - JETI	16	4	15	7	18	0	East of Airport	29	19	26
Between JETI - Noise Dot #3	12	1	24	2	8	1	Left of 265°	10	15	9
Between Noise Dot #3 - Noise Dot #4	9	1	13	0	7	1	Right of 295°	0	3	3
Between Noise Dot #4 - Noise Dot #5	0	0	3	0	0	0				

Total Missed Approaches



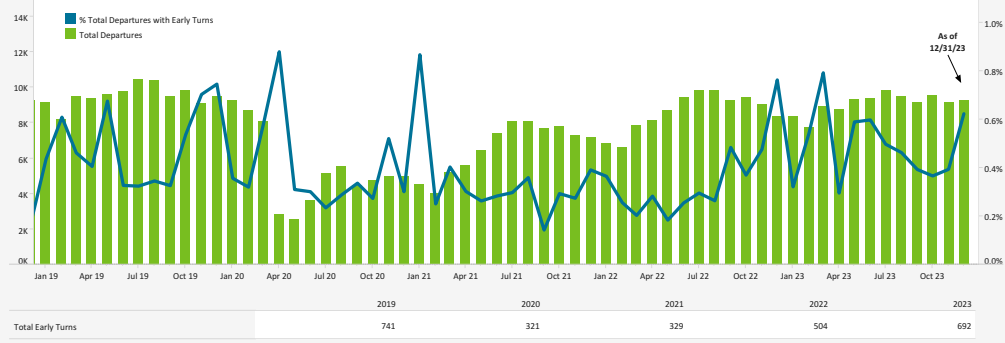
Data Disclaimer: We do our best to ensure that the data we release is complete, accurate and useful. However, because we do not create the data, and because the processing required to make the data useful is complex, we are not liable for omissions, inaccuracies or changes in the data.

EARLY TURN STATISTICS



The Airport Authority has defined early turns as those aircraft that turn right prior to FAA Noise Dot #1 at the 295-degree heading or turn left prior to the FAA Noise Dot #3 at the 265-degree heading.

Total Departures Compared to (%) of Early Turns

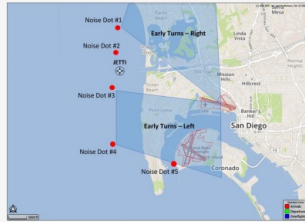


Departure Statistics

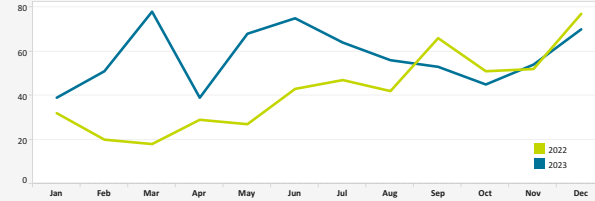
	Oct	Nov	Dec
Jets Turning Left	4,827	4,655	4,800
Between Z2000 and Noise Dots	505	425	575
Compliant with Nighttime departure Heading (290°)	440	394	413
Not Nighttime Compliant - Over La Jolla	9	39	23
Not Nighttime Compliant - Straight Out	13	3	5
Not Nighttime Compliant - East	1	24	16

Cause of Early Turns

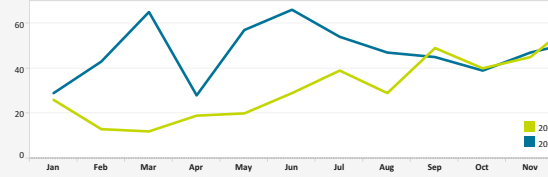
	Oct	Nov	Dec
Caused by ATC Vectors	39	51	59
Caused by Pilot Deviation	3	2	2
Caused by Weather	3	1	9



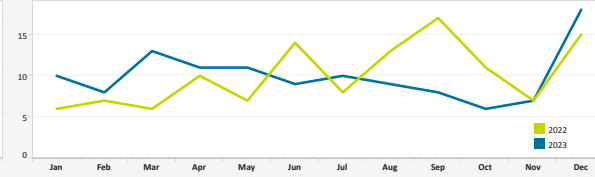
Total Early Turns



Over Point Loma



Over Mission Beach



Early Turns by Operator (December 2023)

Airline	Left Early Turns	Total Operator Departures	% Departures with Left Early Turns
Southwest Airlines	12	6,286	0.2%
Alaska Airlines	4	1,724	0.2%
United Airlines	4	1,662	0.2%
Delta Air Lines	6	1,593	0.4%
American Airlines	6	1,417	0.4%
General Aviation	7	677	1.0%
Frontier Airlines	2	444	0.5%
Netjets	2	332	0.6%
jetBlue Airways	2	307	0.7%
Flexjet	2	137	1.5%
Allegiant Air	1	27	3.7%
Executive Jet Management	1	14	7.1%
MALLARD HOLDINGS LLC	1	4	25.0%
WYLE E INC	1	2	50.0%
JSK	1	2	50.0%

Early Turns by Operator (December 2023)

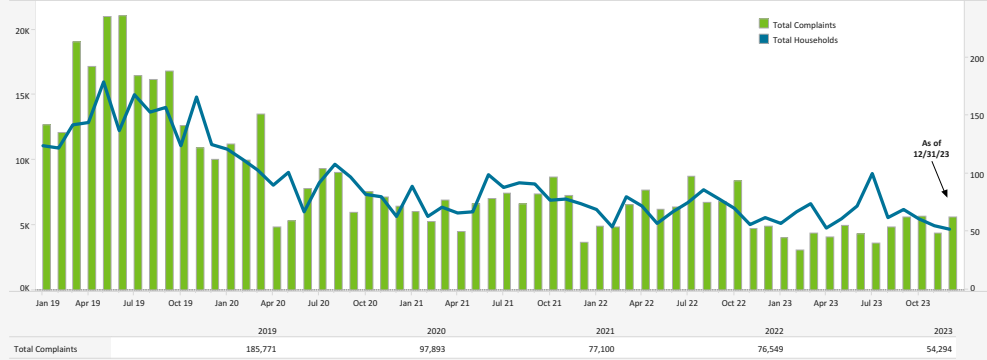
Airline	Right Early Turns	Total Operator Departures	% Departures with Right Early Turns
Southwest Airlines	1	6,286	0.0%
SkyWest Airlines	1	1,838	0.1%
Alaska Airlines	3	1,724	0.2%
United Airlines	1	1,662	0.1%
Delta Air Lines	2	1,593	0.1%
American Airlines	2	1,417	0.1%
General Aviation	2	677	0.3%
Netjets	1	332	0.3%
Jazz	1	186	0.5%
Flexjet	1	137	0.7%
UPS Airlines	1	86	1.2%
PAPA TANGO LLC	1	2	50.0%
CLASSIC SERVICES II LLC	1	2	50.0%

Data Disclaimer: We do our best to ensure that the data we release is complete, accurate and useful. However, because we do not create the data, and because the processing required to make the data useful is complex, we are not liable for omissions, inaccuracies or changes in the data.

NOISE COMPLAINT STATISTICS

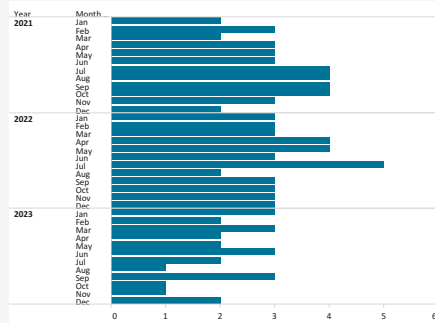


Total Complaints Compared to Total Households

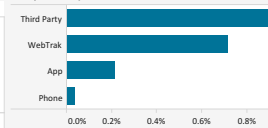


The Authority reports all complaints.

Number of Households with 500+ Complaints per Month



Complaints by Contact Method



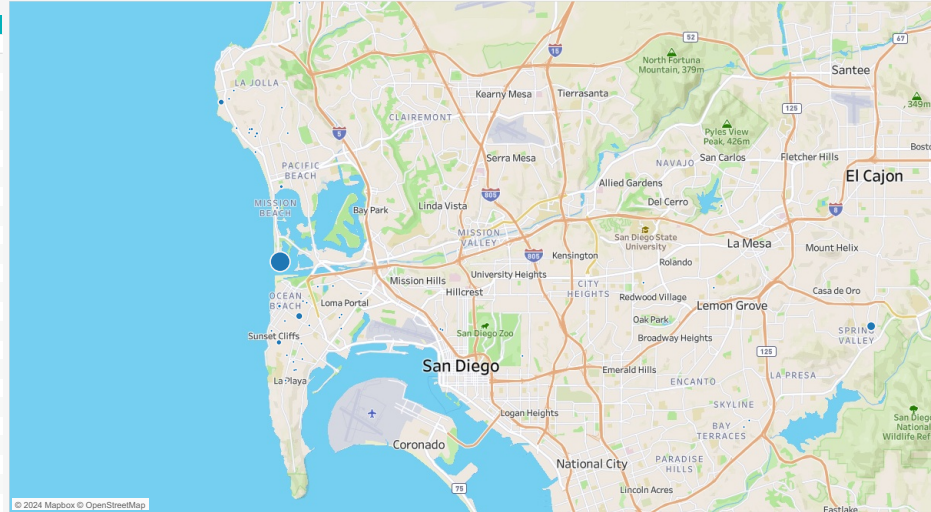
Disturbance Type

Disturbance Type	# Complaints	% Total
Too Loud	5,554	99.6%
Curfew Violation	13	0.2%
Overflight	5	0.1%
Suspected Off Course	4	0.1%
Too Low	2	0.0%
Other	1	0.0%

Number of Complaints by Neighborhood (December 2023)

Neighborhood	Total Complaints	Total Households
Grand Total	5,579	52
Mission Beach	3,755	3
Spring Valley	654	2
Point Loma Heights	370	6
Beach Barber Tract	243	4
Sunset Cliffs	190	2
Pacific Beach	78	2
Bird Rock	70	6
Ocean Beach	67	2
Muirlands	46	1
La Jolla Heights	22	2
Del Mar	19	1
La Mesa	18	2
Loma Portal	10	3
Roseville-Fleet Ridge	10	2
Wooded Area	8	5
Del Mar Heights	6	1
La Jolla Alta	4	1
El Cerrito	3	1
Bay Terraces	1	1
Middletown	1	1
Middletown	1	1
Roseville - Fleet Ridge	1	1
Seawatch Community	1	1
South Park	1	1

Location of Complaints



Data Disclaimer: We do our best to ensure that the data we release is complete, accurate and useful. However, because we do not create the data, and because the processing required to make the data useful is complex, we are not liable for omissions, inaccuracies or changes in the data.