

QUIETER HOME PROGRAM



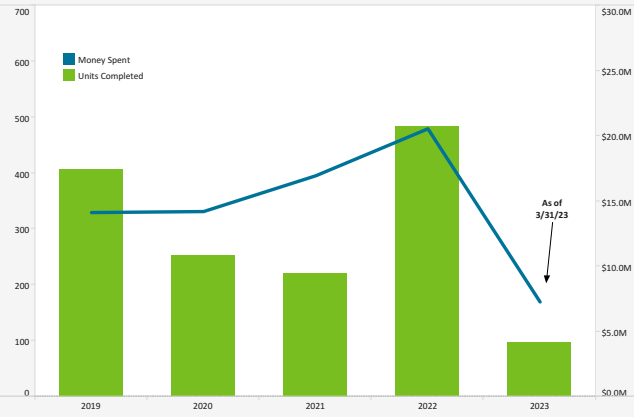
Quieter Home Program As Of: 3/31/2023

Status of Homes	
Added this Month	8
Homes Completed this Month	39
Estimated Homes to Complete in CY 2023	400
Homes on Wait List	484
Total Homes Completed	5,243
Amount Spent on Multi-Family Units (USD) this Month	112,380

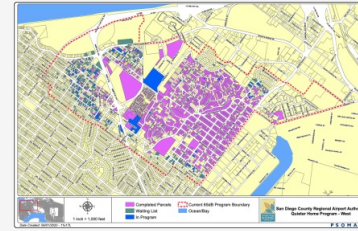
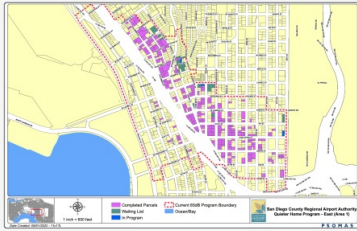
Project	Estimated Construction Start	# Homes
11.4 (QNRP)	In Process	1
11.7	In Process	53
11.8	In Process	112
11.9	In Process	32
11.10	In Process	142
11.11	Spring 2023	48
11.12	In Process	52
12.1	Summer 2023	33
12.2	Spring 2023	35
12.3	Summer 2023	37
12.4 (QNRP)	Winter 2024	3
12.5 (QNRP)	Spring 2024	3
12.6	Fall 2023	62
12.7	Fall 2023	35
12.8	Winter 2023	12
12.9	Spring 2024	41
12.10	Winter 2024	39
12.11	Spring 2024	25
12.12	Summer 2024	32
13.01	Summer 2024	33
13.02	Summer 2024	38

QNRP: Quieter Non-Residential Program

From 2001 – 2009, \$89.8 Million Was Spent To Complete 1,334 Homes



Program Boundary Maps



Data Disclaimer: We do our best to ensure that the data we release is complete, accurate and useful. However, because we do not create the data, and because the processing required to make the data useful is complex, we are not liable for omissions, inaccuracies or changes in the data.

CURFEW VIOLATIONS



Noise Curfew Violations: Any aircraft that departs after 11:30 p.m. and before 6:30 a.m. is subject to a penalty.

Curfew Violations (February - March 2023)

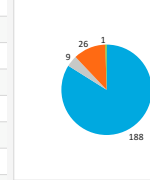
Date, Time	Airline	Aircraft Type	Status
2/4/2023, 01:48 AM	American Airlines	A21N	Not Fined
2/9/2023, 12:44 AM	American Airlines	A21N	Not Fined
2/18/2023, 11:56 PM	Frontier Airlines	A20N	FINED - \$4,000
2/20/2023, 12:17 AM	Frontier Airlines	A20N	FINED - \$12,000
2/21/2023, 12:04 AM	Frontier Airlines	A320	FINED - \$20,000
2/22/2023, 12:27 AM	jetBlue Airways	A320	FINED - \$30,000
2/23/2023, 11:48 PM	Delta Air Lines	B738	FINED - \$2,000
2/24/2023, 11:30 PM	Alaska Airlines	B739	Not Fined
2/24/2023, 11:33 PM	Frontier Airlines	A20N	Not Fined
2/24/2023, 11:34 PM	SkyWest Airlines	E170	Not Fined
2/25/2023, 11:31 PM	Frontier Airlines	A20N	FINED - \$20,000
2/25/2023, 11:43 PM	Spirit Airlines	A20N	FINED - \$2,000
2/25/2023, 11:51 PM	jetBlue Airways	A320	FINED - \$50,000
2/25/2023, 12:01 AM	jetBlue Airways	A320	Not Fined
2/25/2023, 12:22 AM	Frontier Airlines	A20N	FINED - \$20,000
2/26/2023, 11:41 PM	Frontier Airlines	A20N	FINED - \$20,000
2/27/2023, 11:47 PM	jetBlue Airways	A320	FINED - \$50,000
3/1/2023, 11:54 PM	Frontier Airlines	A20N	Pending Review
3/10/2023, 11:35 PM	Frontier Airlines	A20N	Pending Review
3/10/2023, 11:41 PM	American Airlines	A21N	Pending Review
3/10/2023, 11:42 PM	Delta Air Lines	B753	Pending Review
3/10/2023, 11:48 PM	Alaska Airlines	B39M	Pending Review
3/11/2023, 11:30 PM	American Airlines	A321	Pending Review
3/11/2023, 11:32 PM	American Airlines	B738	Pending Review
3/11/2023, 11:34 PM	United Airlines	B39M	Pending Review
3/11/2023, 11:35 PM	Frontiera Flight Holdings Inc	A21N	Pending Review
3/11/2023, 12:05 AM	Frontier Airlines	A20N	Pending Review
3/13/2023, 12:00 AM	Delta Air Lines	A21N	Pending Review
3/13/2023, 12:01 AM	Frontier Airlines	A20N	Pending Review
3/13/2023, 12:47 AM	Delta Air Lines	B753	Pending Review
3/15/2023, 11:45 PM	Spirit Airlines	A20N	Pending Review
3/16/2023, 12:01 AM	Spirit Airlines	A320	Pending Review
3/19/2023, 11:37 PM	Alaska Airlines	B738	Pending Review
3/19/2023, 11:52 PM	United Airlines	B739	Pending Review
3/19/2023, 11:58 PM	Alaska Airlines	B39M	Pending Review
3/20/2023, 01:45 AM	jetBlue Airways	A321	Pending Review
3/20/2023, 11:39 PM	Frontier Airlines	A20N	Pending Review
3/20/2023, 12:20 AM	American Airlines	A321	Pending Review
3/20/2023, 12:22 AM	Frontera Flight Holdings Inc	A21N	Pending Review
3/20/2023, 12:24 AM	jetBlue Airways	A320	Pending Review
3/20/2023, 12:25 AM	jetBlue Airways	A320	Pending Review
3/20/2023, 12:27 AM	American Airlines	A21N	Pending Review
3/22/2023, 12:49 AM	SkyWest Airlines	E170	Pending Review
3/22/2023, 12:52 AM	Frontier Airlines	A20N	Pending Review
3/25/2023, 11:51 PM	AIR METHODS CORP	A21N	Pending Review
3/29/2023, 11:57 PM	jetBlue Airways	A320	Pending Review
3/31/2023, 11:48 PM	Alaska Airlines	B739	Pending Review
3/31/2023, 12:30 AM	American Airlines	A321	Pending Review
3/31/2023, 12:32 AM	jetBlue Airways	A321	Pending Review

Annual Violations and Penalties Assessed (Year-to-Date)

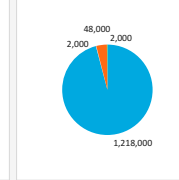
Year	Total Violations	Fines Assessed
2019	46	\$132,000
2020	18	\$16,000
2021	52	\$204,000
2022	89	\$804,000
2023	65	\$246,000

Airline Category  
 A - Air  
 C - Cargo  
 G - G/A  
 M - Mil

Violations by Airline Category (2020 - Present)

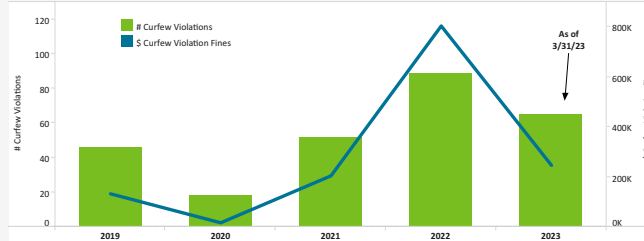


Fines Assessed by Airline Category (2020 - Present)



Airline Category	# Curfew Violations	\$ Curfew Violation Fines
A - Air	188	\$1,218,000
C - Cargo	9	\$2,000
G - G/A	26	\$48,000
M - Mil	1	\$2,000

Curfew Violations and Penalties Assessed (by Year)



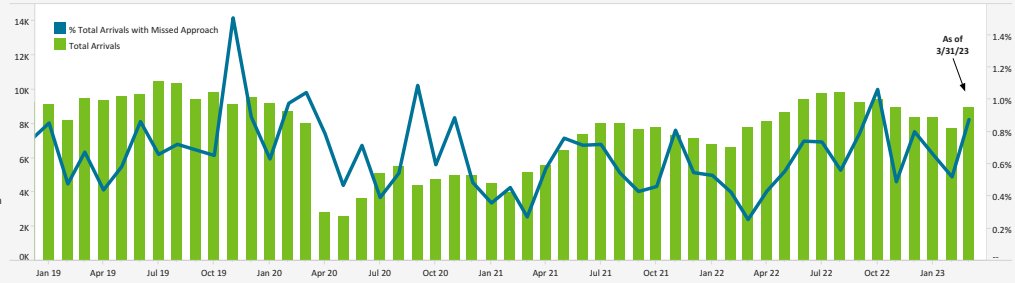
Data Disclaimer: We do our best to ensure that the data we release is complete, accurate and useful. However, because we do not create the data, and because the processing required to make the data useful is complex, we are not liable for omissions, inaccuracies or changes in the data.

**MISSED APPROACH STATISTICS**



Missed Approaches: A procedure to maintain safety, initiated by the pilot or Air Traffic Control (ATC) for a pilot to abandon the approach to landing.

Total Arrivals Compared to (%) of Missed Approaches

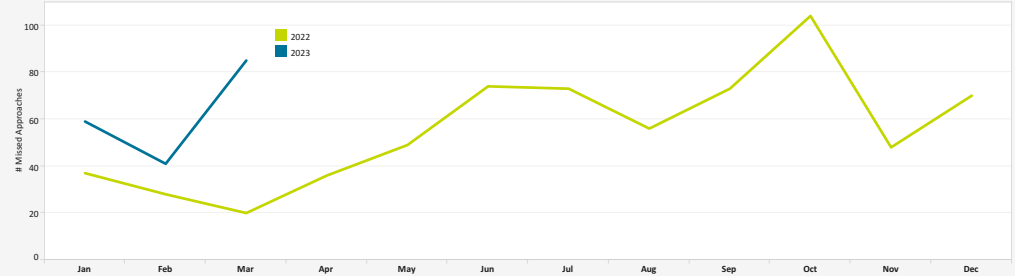


	2019	2020	2021	2022	2023
% Total Arrivals with Missed Approach	0.8%	0.7%	0.6%	0.6%	0.7%
Total Arrivals	114,193	64,576	79,016	102,974	24,963
Total Missed Approaches	895	508	470	668	185

Missed Approach Location Statistics

	Jan		Feb		Mar			Jan	Feb	Mar
	Day	Night	Day	Night	Day	Night				
Between Noise Dot #1 - Noise Dot #2	1	0	1	3	2	0	Between 265°-295° Heading (Standard)	39	26	46
Between Noise Dot #2 - JETI	26	2	12	1	28	1	East of Airport	7	5	33
Between JETI - Noise Dot #3	8	2	7	2	15	0	Left of 265°	9	8	6
Between Noise Dot #3 - Noise Dot #4	7	1	7	0	4	0	Right of 295°	3	1	1
Between Noise Dot #4 - Noise Dot #5	1	0	1	0	2	0				

Total Missed Approaches



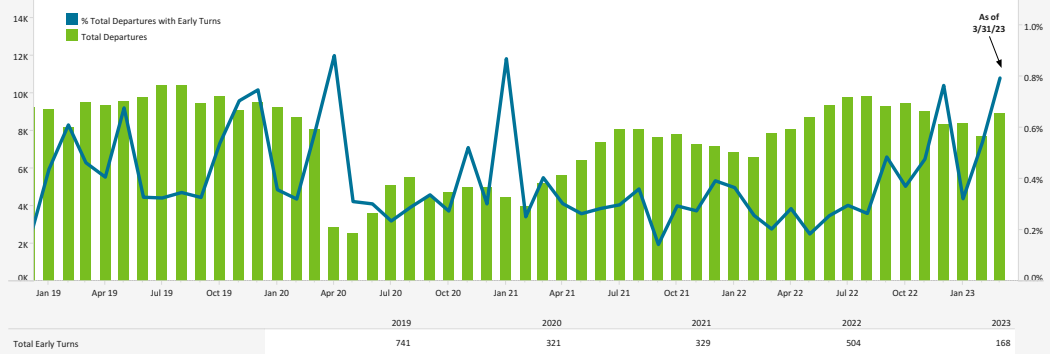
Data Disclaimer: We do our best to ensure that the data we release is complete, accurate and useful. However, because we do not create the data, and because the processing required to make the data useful is complex, we are not liable for omissions, inaccuracies or changes in the data.

EARLY TURN STATISTICS



The Airport Authority has defined early turns as those aircraft that turn right prior to FAA Noise Dot #1 at the 295-degree heading or turn left prior to the FAA Noise Dot #3 at the 265-degree heading.

Total Departures Compared to (%) of Early Turns

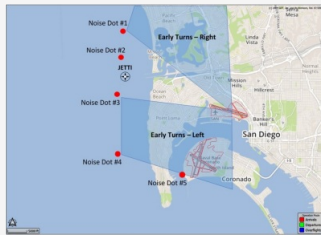


Departure Statistics

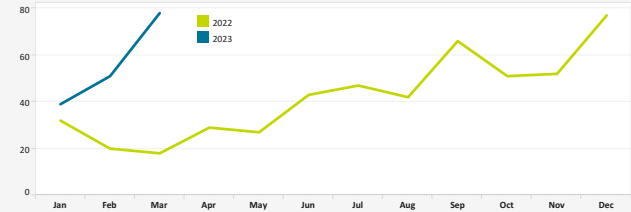
	Jan	Feb	Mar
Jets Turning Left	3,534	3,635	4,044
Between Z2000 and Noise Dots	510	576	507
Compliant with Nighttime departure Heading (290°)	341	335	465
Not Nighttime Compliant - Over La Jolla	17	12	58
Not Nighttime Compliant - Straight Out	1	1	9
Not Nighttime Compliant - East	37	21	64

Cause of Early Turns

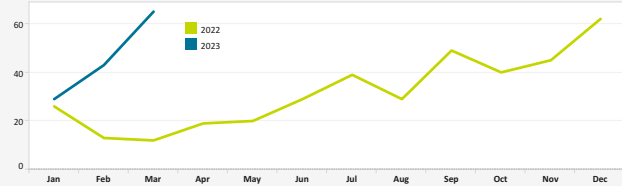
	Jan	Feb	Mar
Caused by ATC Vectors	38	50	45
Caused by Pilot Deviation	1	1	1
Caused by Weather	0	0	32



Total Early Turns



Over Point Loma



Over Mission Beach



Early Turns by Operator (March 2023)

Airline	Left Early Turns	Total Operator Departures	% Departures with Left Early Turns
Southwest Airlines	15	5,680	0.3%
Alaska Airlines	4	1,681	0.2%
SkyWest Airlines	2	1,599	0.1%
United Airlines	8	1,566	0.5%
Delta Air Lines	6	1,474	0.4%
American Airlines	8	1,328	0.6%
General Aviation	5	829	0.6%
Frontier Airlines	2	391	0.5%
jetBlue Airways	2	371	0.5%
Spirit Airlines	1	333	0.3%
Netjets	2	326	0.6%
Lufthansa	1	34	2.9%
MLW LA PALOMA INC	2	8	25.0%
AVIATION TRUST CO LLC TRUSTEE	1	8	12.5%
Travel Management Company Limited	1	7	14.3%
VCSGV LLC	1	4	25.0%
Ultimate Jetcharters	1	4	25.0%
NETJETS SALES INC	1	4	25.0%
Lyddon Aero Center Inc	1	2	50.0%
FE 5272 LLC	1	2	50.0%

Early Turns by Operator (March 2023)

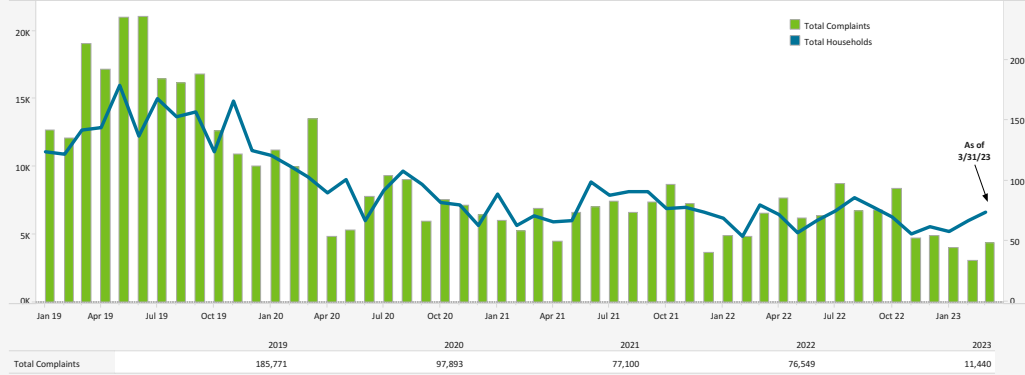
Airline	Right Early Turns	Total Operator Departures	% Departures with Right Early Turns
Southwest Airlines	2	5,680	0.0%
United Airlines	1	1,566	0.1%
General Aviation	3	829	0.4%
Netjets	4	326	1.2%
Flexjet	1	134	0.7%
SWISS AVIATION ENTERPRISES LLC	1	4	25.0%
CRAIG AIR LLC	1	2	50.0%

Data Disclaimer: We do our best to ensure that the data we release is complete, accurate and useful. However, because we do not create the data, and because the processing required to make the data useful is complex, we are not liable for omissions, inaccuracies or changes in the data.

NOISE COMPLAINT STATISTICS

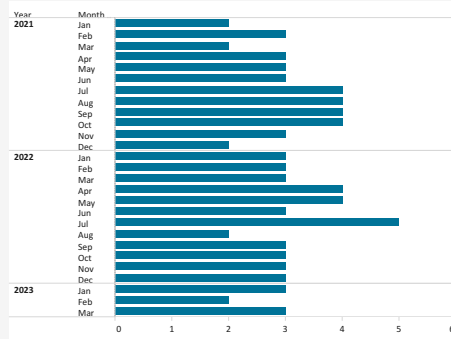


Total Complaints Compared to Total Households

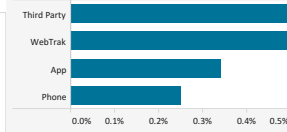


The Authority reports all complaints.

Number of Households with 500+ Complaints per Month



Complaints by Contact Method



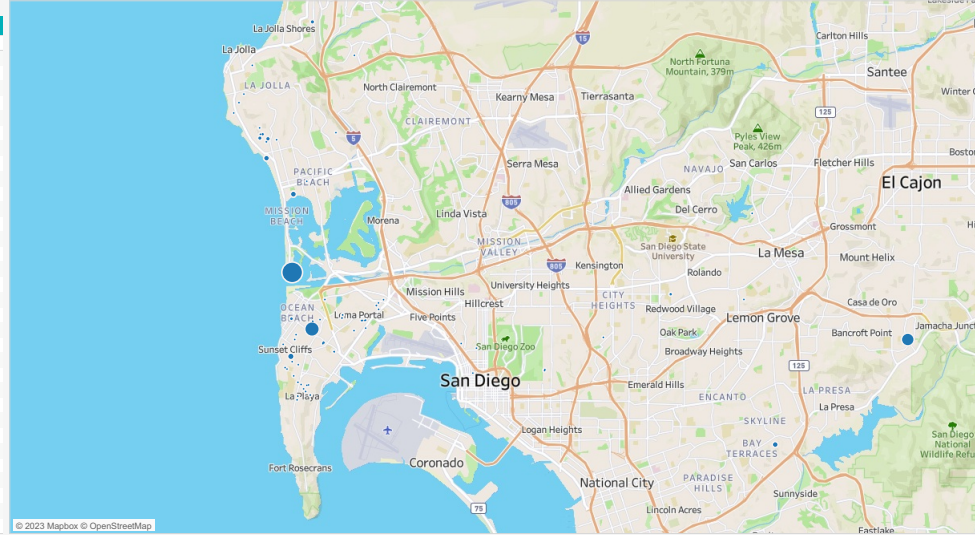
Disturbance Type

Disturbance Type	# Complaints	% Total
Too Loud	4,318	98.6%
Curfew Violation	39	0.9%
Suspected Off Course	14	0.3%
Off Course	3	0.1%
Overflight	3	0.1%
Too Low	2	0.0%
Increased Flight Volu...	1	0.0%

Number of Complaints by Neighborhood (March 2023)

Neighborhood	Total Complaints	Total Households
Grand Total	4,380	74
Mission Beach	1,898	2
Point Loma Heights	939	9
Spring Valley	656	1
Bird Rock	188	5
Sunset Cliffs	152	7
Pacific Beach	107	3
Bay Terraces	100	1
Muirlands	57	2
Del Mar	54	1
La Jolla Heights	45	1
Ocean Beach	35	1
Loma Portal	32	9
El Cerrito	27	1
Beach Barber Tract	23	2
Wooded Area	11	6
Del Mar Heights	10	1
Midway District	7	2
Middletown	6	1
La Mesa	5	2
La Playa	4	2
Roseville-Fleet Ridge	4	2
Lower Hermosa	3	1
Point Loma	3	2
University City	3	1
La Jolla Village	2	1
Laguna Niguel	2	1
South Park	2	2
Bankers Hill	1	1
City Heights	1	1
La Jolla Mesa	1	1
Little Italy	1	1
Point Loma Heights	1	1

Location of Complaints



Data Disclaimer: We do our best to ensure that the data we release is complete, accurate and useful. However, because we do not create the data, and because the processing required to make the data useful is complex, we are not liable for omissions, inaccuracies or changes in the data.