

QUIETER HOME PROGRAM



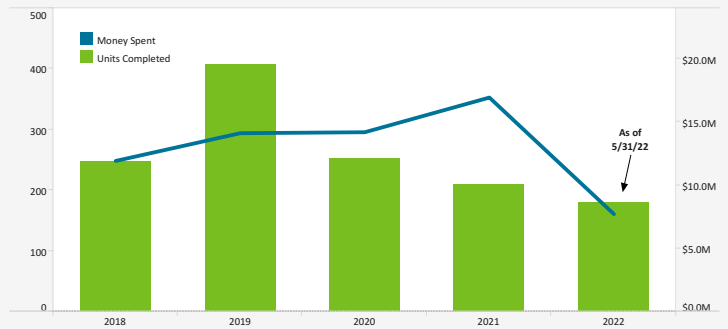
Quieter Home Program As Of: 5/31/2022

Status of Homes	
Added this month	6
Estimated Homes to Complete in CY 2022	400
Homes Completed this month	33
Homes on Wait List	644
Total Homes Completed	4,832

Project	Estimated Construction Start	# Homes
11.1	In Process	48
11.2	In Process	40
11.3	In Process	102
11.4 (QNRP)	Fall 2022	1
11.5	In Process	34
11.6	Spring 2022	119
11.7	Summer 2022	53
11.8	Fall 2022	112
11.9	Fall 2022	32
11.10	Fall 2022	142
11.11	Winter 2023	48
11.12	Fall 2022	52
12.1	Winter 2023	34
12.2	Spring 2023	35
12.3	Summer 2023	44
12.4 (QNRP)	Fall 2023	3
12.5 (QNRP)	Fall 2023	3
12.6	Fall 2023	63

QNRP: Quieter Non-Residential Pr..

From 2001 – 2009, \$89.8 Million Was Spent To Complete 1,356 Homes



Post – Construction Homeowner Survey Results

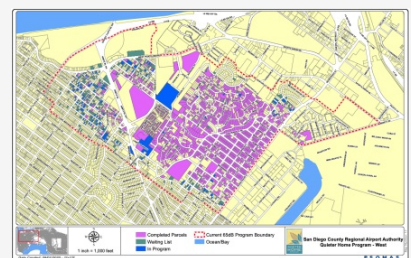
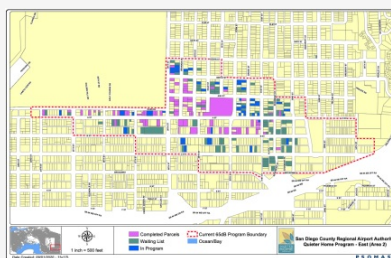
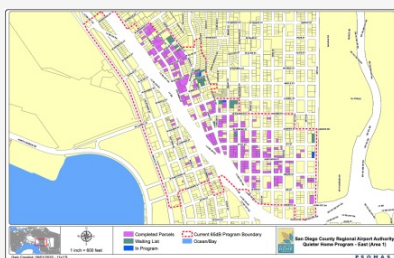
Overall Experience

Excellent	Satisfied	Unsatisfied
76%	22%	3%

Effectiveness

Question	Answer	Percentage
Effectiveness of Doors	Significant Improvement	82%
	Slight Improvement	13%
	No Improvement	4%
	Not Installed	2%
Effectiveness of Ventilation	Significant Improvement	71%
	Slight Improvement	11%
	No Improvement	8%
	Not Installed	10%
Effectiveness of Windows	Significant Improvement	87%
	Slight Improvement	11%
	No Improvement	2%
	Not Installed	0%

Program Boundary Maps



Data Disclaimer: We do our best to ensure that the data we release is complete, accurate and useful. However, because we do not create the data, and because the processing required to make the data useful is complex, we are not liable for omissions, inaccuracies or changes in the data.

**CURFEW VIOLATIONS**



Noise Curfew Violations: Any aircraft that departs after 11:30 p.m. and before 6:30 a.m. is subject to a penalty.

Curfew Violations (April - May 2022)

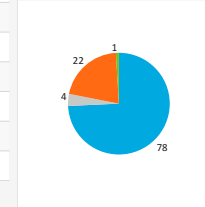
Date, Time	Airline	Aircraft Type	Status
4/2/2022, 12:50 AM	Allegiant Air	A319	Not Fined
4/4/2022, 11:30 PM	Delta Air Lines	B738	Not Fined
4/7/2022, 12:54 AM	Delta Air Lines	A333	Not Fined
4/8/2022, 12:03 AM	Alaska Airlines	B738	FINED - \$8,000
4/9/2022, 12:22 AM	Allegiant Air	A319	FINED - \$2,000
4/9/2022, 12:27 AM	jetBlue Airways	A320	FINED - \$110,000
4/13/2022, 11:35 PM	Alaska Airlines	B739	Not Fined
4/14/2022, 11:44 PM	jetBlue Airways	A320	FINED - \$110,000
4/23/2022, 11:31 PM	Alaska Airlines	B39M	Not Fined
5/6/2022, 11:49 PM	Allegiant Air	A320	Pending Review
5/9/2022, 11:32 PM	Alaska Airlines	B39M	Pending Review
5/11/2022, 11:37 PM	Alaska Airlines	B39M	Pending Review
5/12/2022, 05:57 AM	Sedgwick Claims	G280	Pending Review
5/13/2022, 11:38 PM	Alaska Airlines	B739	Pending Review
5/14/2022, 02:12 AM	International Jet Management	FA7X	Pending Review
5/17/2022, 11:29 PM	Alaska Airlines	B39M	Pending Review
5/23/2022, 12:03 AM	Spirit Airlines	A20N	Pending Review

Annual Violations and Penalties Assessed (Year-to-Date)

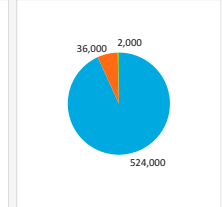
Year	Total Violations	Fines Assessed
2018	60	\$254,000
2019	46	\$132,000
2020	18	\$16,000
2021	52	\$204,000
2022	35	\$342,000

Airline Category  
 A - Air  
 C - Cargo  
 G - G/A  
 M - Mil

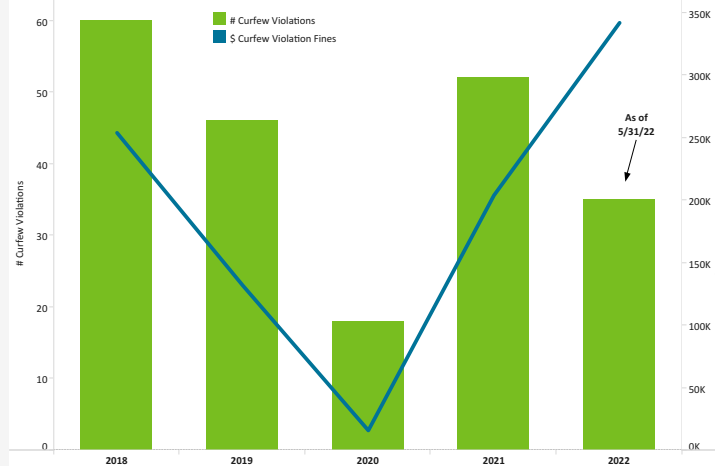
Violations by Airline Category (2020 - Present)



Fines Assessed by Airline Category (2020 - Present)



Curfew Violations and Penalties Assessed (by Year)



Airline Category	# Curfew Violations	\$ Curfew Violation Fines
A - Air	78	\$524,000
C - Cargo	4	\$0
G - G/A	22	\$36,000
M - Mil	1	\$2,000

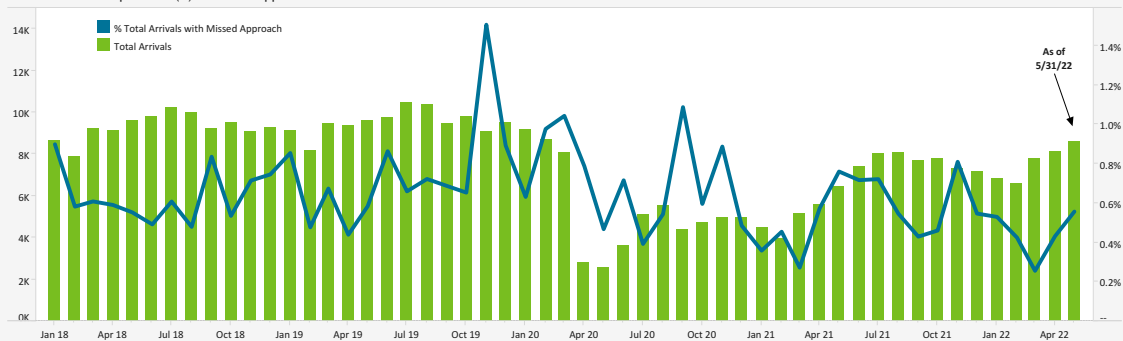
Data Disclaimer: We do our best to ensure that the data we release is complete, accurate and useful. However, because we do not create the data, and because the processing required to make the data useful is complex, we are not liable for omissions, inaccuracies or changes in the data.

**MISSED APPROACH STATISTICS**



Missed Approaches: A procedure to maintain safety, initiated by the pilot or Air Traffic Control (ATC) for a pilot to abandon the approach to landing.

Total Arrivals Compared to (%) of Missed Approaches

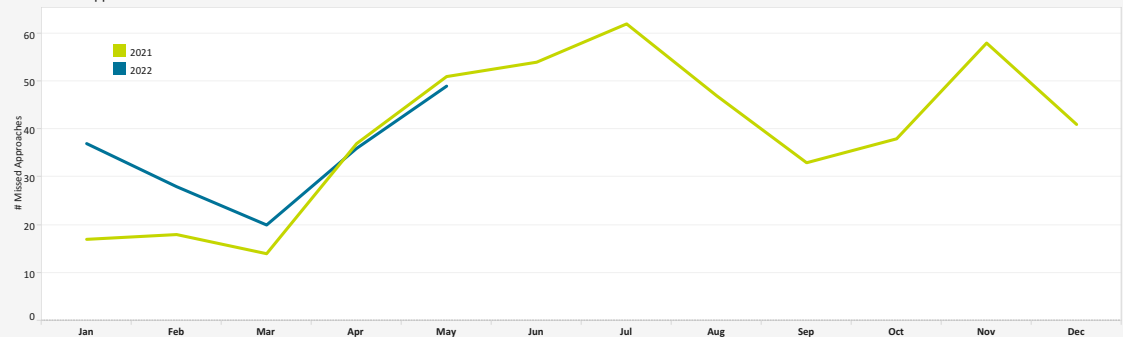


	2018	2019	2020	2021	2022
% Total Arrivals with Missed Approach	0.6%	0.8%	0.7%	0.6%	0.4%
Total Arrivals	111,618	114,193	64,576	79,016	37,944
Total Missed Approaches	721	895	508	470	170

Missed Approach Location Statistics

	Mar		Apr		May		Mar	Apr	May
	Day	Night	Day	Night	Day	Night			
Between Noise Dot #1 - Noise Dot #2	1	0	0	0	1	0	12	28	36
Between Noise Dot #2 - JETTI	7	1	14	1	20	2	5	2	2
Between JETTI - Noise Dot #3	3	0	12	1	12	1	2	5	6
Between Noise Dot #3 - Noise Dot #4	1	0	4	0	3	0	0	1	5
Between Noise Dot #4 - Noise Dot #5	1	0	1	0	3	0			
Between 265°-295° Heading (Standard)									
East of Airport									
Left of 265°									
Right of 295°									

Total Missed Approaches



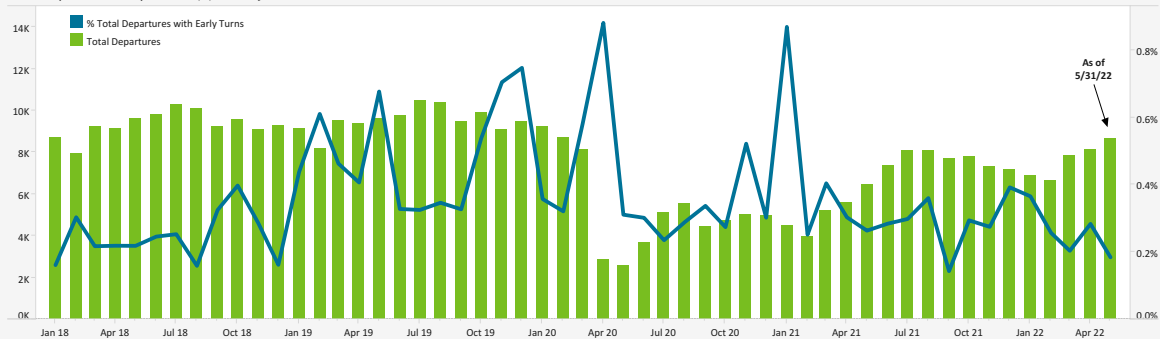
Data Disclaimer: We do our best to ensure that the data we release is complete, accurate and useful. However, because we do not create the data, and because the processing required to make the data useful is complex, we are not liable for omissions, inaccuracies or changes in the data.

EARLY TURN STATISTICS



The Airport Authority has defined early turns as those aircraft that turn right prior to FAA Noise Dot #1 at the 295-degree heading or turn left prior to the FAA Noise Dot #3 at the 265-degree heading.

Total Departures Compared to (%) of Early Turns



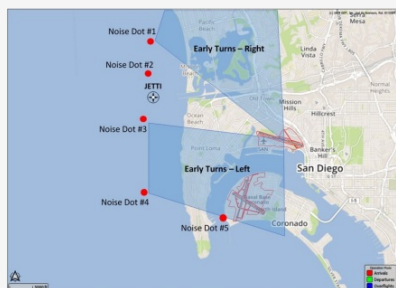
	2018	2019	2020	2021	2022
Total Early Turns	395	741	321	329	126

Departure Statistics

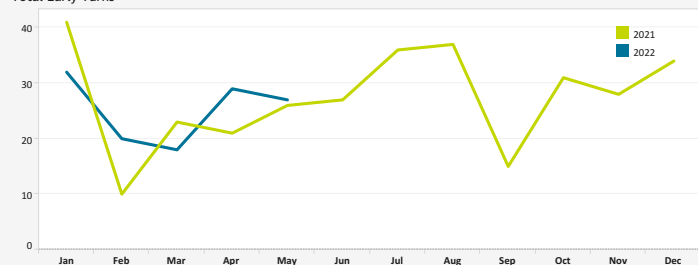
	Mar	Apr	May
Jets Turning Left	3,855	3,810	4,072
Between Z2000 and Noise Dots	451	521	454
Compliant with Nighttime departure Heading (290°)	352	409	401
Not Nighttime Compliant - Over La Jolla	28	44	19
Not Nighttime Compliant - Straight Out	12	10	6
Not Nighttime Compliant - East	5	0	0

Cause of Early Turns

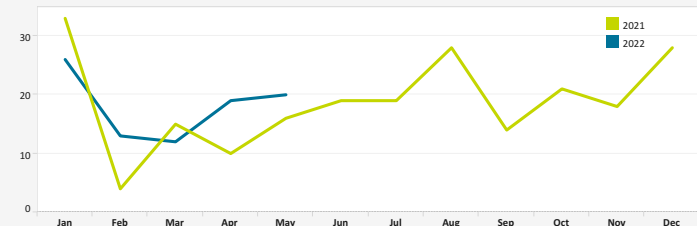
	Mar	Apr	May
Caused by ATC Vectors	15	28	23
Caused by Pilot Deviation	3	1	4
Caused by Weather	0	0	0



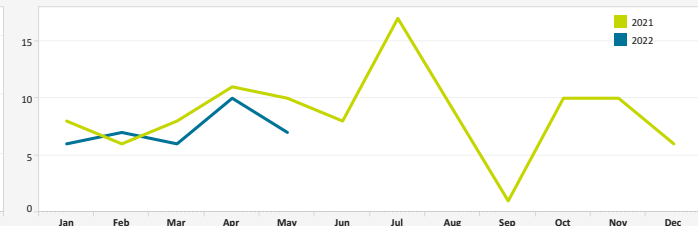
Total Early Turns



Over Point Loma



Over Mission Beach



Early Turns by Operator (May 2022)

Airline	Left Early Turns	Total Operator Departures	% Departures with Left Early Turns
Southwest Airlines	5	5,309	0.1%
Alaska Airlines	1	1,481	0.1%
Delta Air Lines	2	1,288	0.2%
American Airlines	5	1,151	0.4%
General Aviation	5	792	0.6%
NetJets	1	364	0.3%
JetBlue Airways	1	30	3.3%

Early Turn by Operator (May 2022)

Airline	Right Early Turns	Total Operator Departures	% Departures with Right Early Turns
Southwest Airlines	1	5,309	0.0%
SkyWest Airlines	2	2,013	0.1%
Alaska Airlines	1	1,481	0.1%
General Aviation	1	792	0.1%
Japan Airlines	1	58	1.7%
ECLIPSE 231 LLC	1	2	50.0%

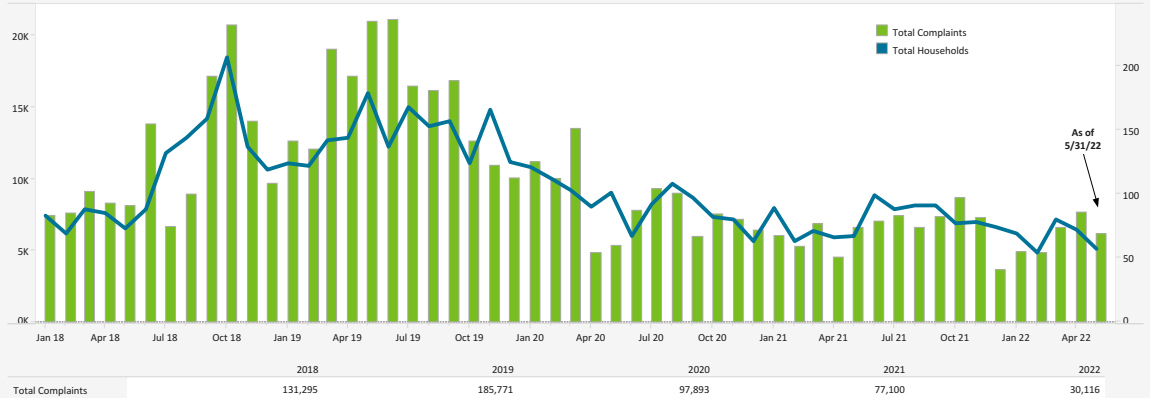
Data Disclaimer: We do our best to ensure that the data we release is complete, accurate and useful. However, because we do not create the data, and because the processing required to make the data useful is complex, we are not liable for omissions, inaccuracies or changes in the data.

**NOISE COMPLAINT STATISTICS**

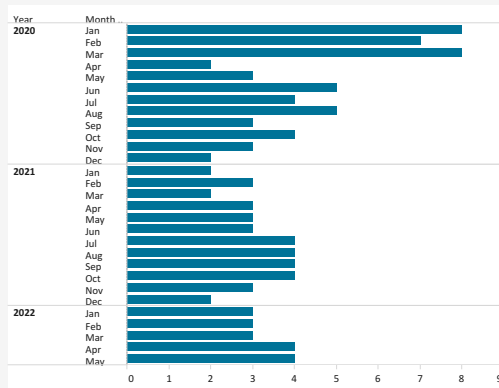


The Authority reports all complaints.

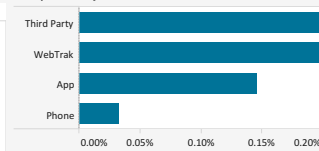
Total Complaints Compared to Total Households



Number of Households with 500+ Complaints per Month



Complaints by Contact Method



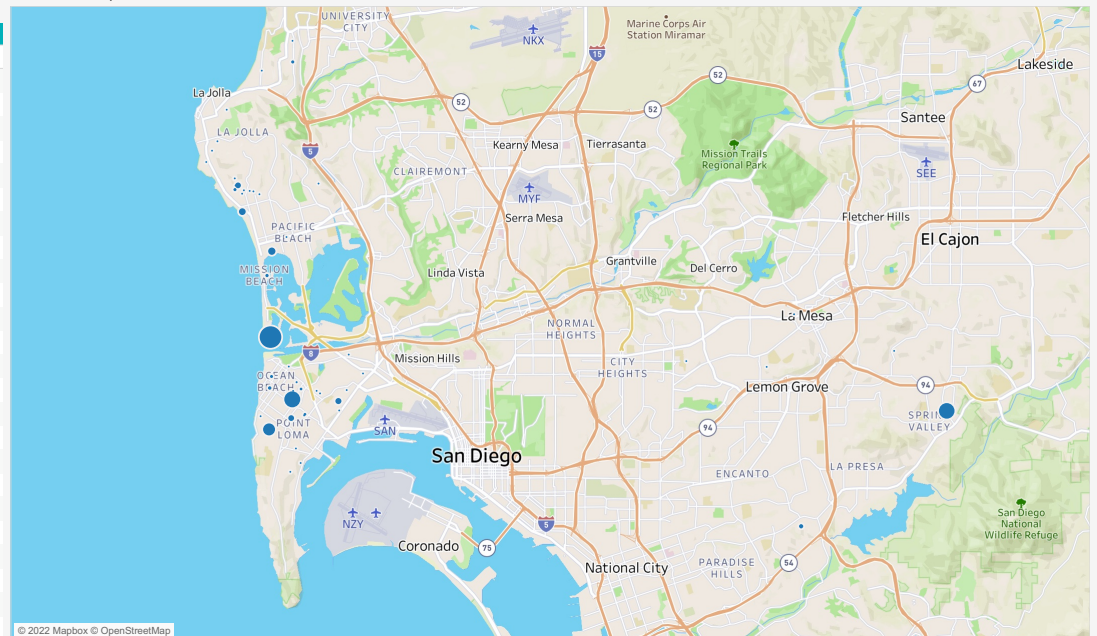
Disturbance Type

Disturbance Type	# Complaints	% Total
Too Loud	6,147	99.5%
Overflight	8	0.1%
Other	6	0.1%
Curfew Violation	5	0.1%
Fixed Wing	4	0.1%
Suspected Off Course	4	0.1%
Too Low	1	0.0%

Number of Complaints by Neighborhood (May 2022)

Neighborhood	Total Complaints	Total Households
Grand Total	6,175	57
Mission Beach	2,011	5
Point Loma Heights	1,293	9
Spring Valley	1,016	1
Sunset Cliffs	673	3
Bird Rock	375	5
Pacific Beach	223	3
Ocean Beach	181	4
Loma Portal	156	3
Bay Terraces	74	1
La Jolla Heights	52	2
Del Mar	35	1
Beach Barber Tract	19	2
Roseville-Fleet Ridge	13	2
La Jolla Mesa	12	3
Del Mar Heights	9	1
Casa De Oro-Mount Helix	6	1
Muirlands	6	2
El Cerrito	5	1
La Jolla Shores	5	1
La Mesa	5	2
La Playa	3	2
La Jolla Village	1	1
Lower Hermosa	1	1
Midway District	1	1

Location of Complaints



Data Disclaimer: We do our best to ensure that the data we release is complete, accurate and useful. However, because we do not create the data, and because the processing required to make the data useful is complex, we are not liable for omissions, inaccuracies or changes in the data.