

QUIETER HOME PROGRAM



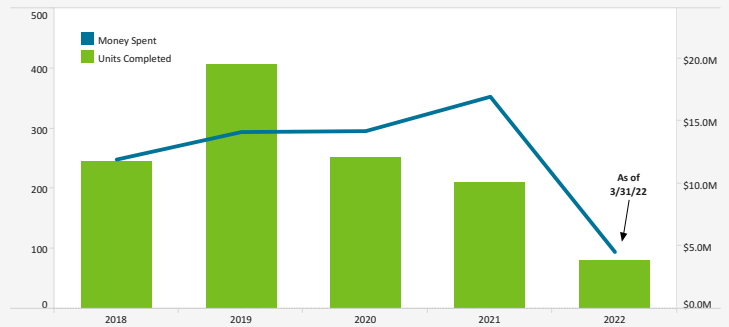
Quieter Home Program As Of: 03/31/2022

Status of Homes	
Added this month	9
Estimated Homes to Complete in CY 2022	400
Homes Completed this month	41
Homes on Wait List	644
Total Homes Completed	4,734

Project	Estimated Construction Start	# Homes
11.1	In Process	48
11.2	In Process	40
11.3	In Process	102
11.4 (QNRP)	Spring 2022	1
11.5	Spring 2022	34
11.6	Spring 2022	119
11.7	Summer 2022	53
11.8	Summer 2022	112
11.9	Fall 2022	32
11.10	Winter 2022	142
11.11	Winter 2023	48
11.12	Winter 2022	52
12.1	Winter 2023	34
12.2	Spring 2023	35
12.3	Spring 2023	44

QNRP: Quieter Non-Residential Pr..

From 2001 – 2009, \$89.8 Million Was Spent To Complete 1,356 Homes



Post – Construction Homeowner Survey Results

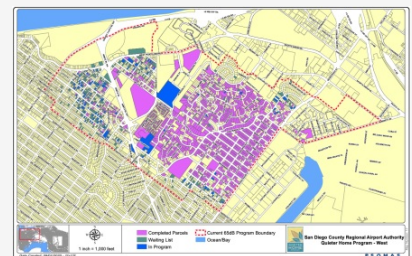
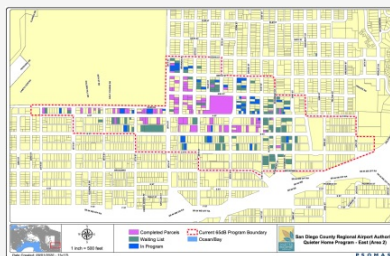
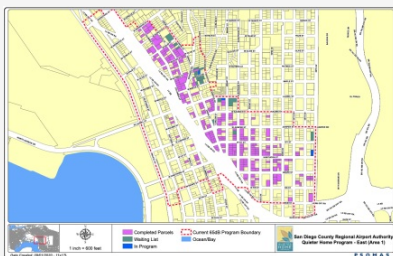
Overall Experience

Excellent	Satisfied	Unsatisfied
76%	22%	3%

Effectiveness

Question	Answer	Percentage
Effectiveness of Doors	Significant Improvement	82%
	Slight Improvement	13%
	No Improvement	4%
	Not Installed	2%
Effectiveness of Ventilation	Significant Improvement	71%
	Slight Improvement	11%
	No Improvement	8%
	Not Installed	10%
Effectiveness of Windows	Significant Improvement	87%
	Slight Improvement	11%
	No Improvement	2%
	Not Installed	0%

Program Boundary Maps



Data Disclaimer: We do our best to ensure that the data we release is complete, accurate and useful. However, because we do not create the data, and because the processing required to make the data useful is complex, we are not liable for omissions, inaccuracies or changes in the data.

CURFEW VIOLATIONS



Noise Curfew Violations: Any aircraft that departs after 11:30 p.m. and before 6:30 a.m. is subject to a penalty.

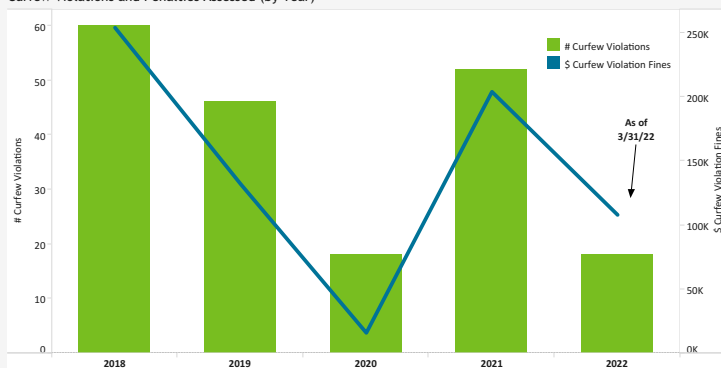
Curfew Violations (February - March 2022)

Date, Time	Airline	Aircraft Type	Status
2/3/2022, 05:29 AM	CVS Pharmacy Inc.	F2TH	FINED - \$2,000
2/5/2022, 12:13 AM	Jet Luxe	H258	FINED - \$2,000
2/15/2022, 11:51 PM	Project Finance Inc.	CL35	FINED - \$2,000
2/22/2022, 11:36 PM	Delta Air Lines	B738	Not Fined
2/23/2022, 04:53 AM	IFL Group	FA20	FINED - \$2,000
2/28/2022, 11:46 PM	jetBlue Airways	A320	FINED - \$72,000
3/3/2022, 11:57 PM	jetBlue Airways	A320	Pending Review
3/6/2022, 12:10 AM	American Airlines	B738	Pending Review
3/9/2022, 02:14 AM	Qatar Executive	GLF6	Pending Review
3/13/2022, 11:55 PM	American Airlines	A321	Pending Review
3/20/2022, 11:52 PM	ConocoPhillips Alaska Inc	B737	Pending Review
3/23/2022, 12:25 AM	American Airlines	B738	Pending Review

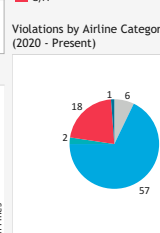
Annual Violations and Penalties Assessed (Year-to-Date)

Year	Total Violations	Fines Assessed
2018	60	\$254,000
2019	46	\$132,000
2020	18	\$16,000
2021	52	\$204,000
2022	18	\$108,000

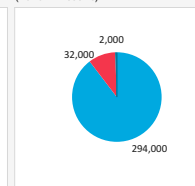
Curfew Violations and Penalties Assessed (by Year)



Violations by Airline Category (2020 - Present)



Fines Assessed by Airline Category (2020 - Present)



Airline Category	# Curfew Violations	\$ Curfew Violation Fines
A	6	\$0
AIR	57	\$294,000
G	2	\$0
G/A	18	\$32,000
GOV	1	\$2,000

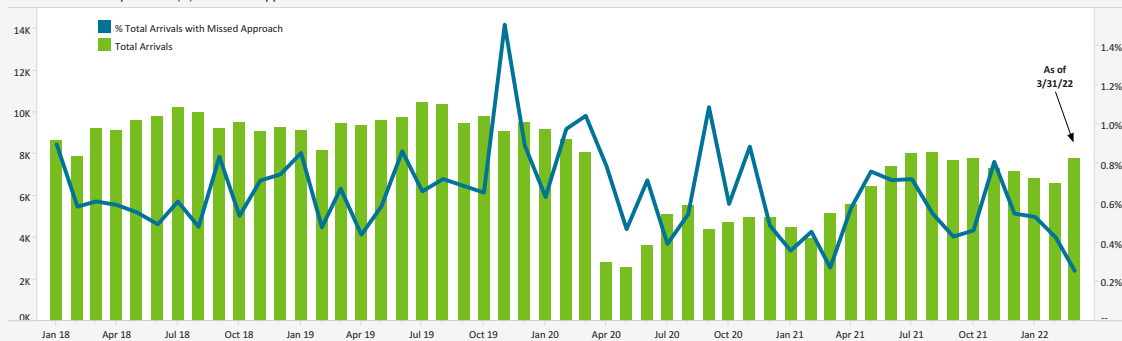
Data Disclaimer: We do our best to ensure that the data we release is complete, accurate and useful. However, because we do not create the data, and because the processing required to make the data useful is complex, we are not liable for omissions, inaccuracies or changes in the data.

MISSSED APPROACH STATISTICS



Missed Approaches: A procedure to maintain safety, initiated by the pilot or Air Traffic Control (ATC) for a pilot to abandon the approach to landing.

Total Arrivals Compared to (%) of Missed Approaches

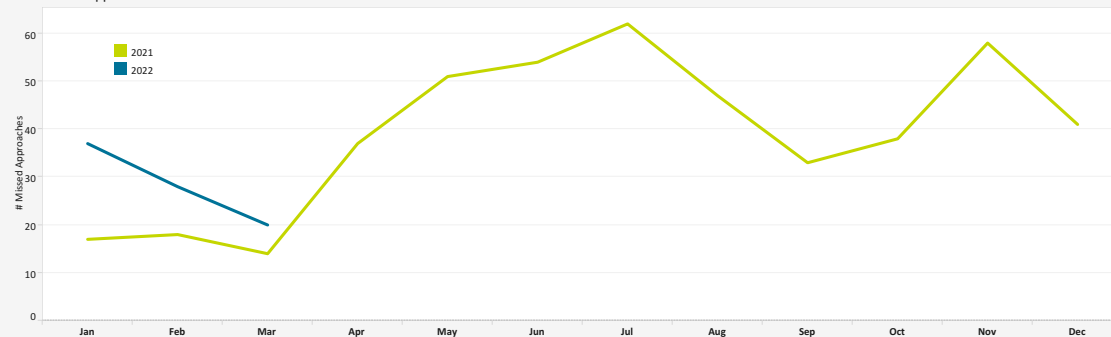


	2018	2019	2020	2021	2022
% Total Arrivals with Missed Approach	0.6%	0.8%	0.7%	0.6%	0.4%
Total Arrivals	111,618	114,193	64,576	79,016	21,212
Total Missed Approaches	721	895	508	470	85

Missed Approach Location Statistics

	Jan		Feb		Mar			Jan	Feb	Mar
	Day	Night	Day	Night	Day	Night				
Between Noise Dot #1 - Noise Dot #2	0	0	0	1	1	0	Between 265°-295° Heading (Standard)	29	19	12
Between Noise Dot #2 - JETTI	20	1	8	0	7	1	East of Airport	2	6	5
Between JETTI - Noise Dot #3	6	2	9	1	3	0	Left of 265°	4	2	2
Between Noise Dot #3 - Noise Dot #4	2	1	2	0	1	0	Right of 295°	3	1	0
Between Noise Dot #4 - Noise Dot #5	1	0	0	0	1	0				

Total Missed Approaches



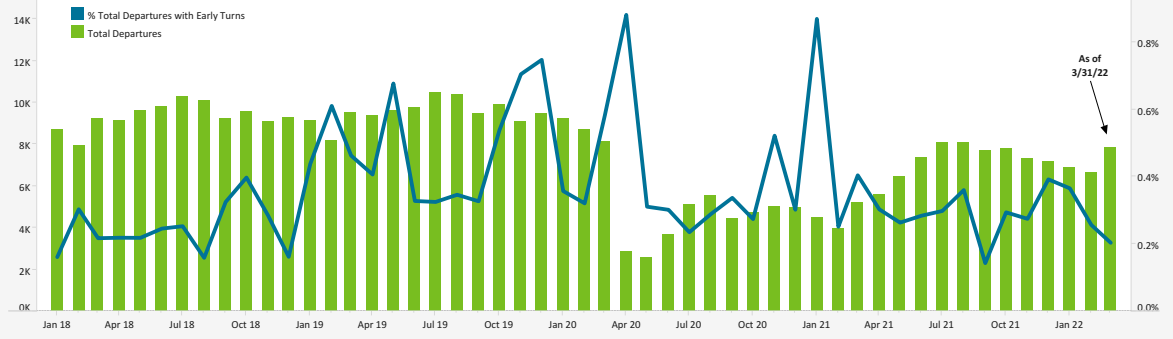
Data Disclaimer: We do our best to ensure that the data we release is complete, accurate and useful. However, because we do not create the data, and because the processing required to make the data useful is complex, we are not liable for omissions, inaccuracies or changes in the data.

EARLY TURN STATISTICS



The Airport Authority has defined early turns as those aircraft that turn right prior to FAA Noise Dot #1 at the 295-degree heading or turn left prior to the FAA Noise Dot #3 at the 265-degree heading.

Total Departures Compared to (%) of Early Turns



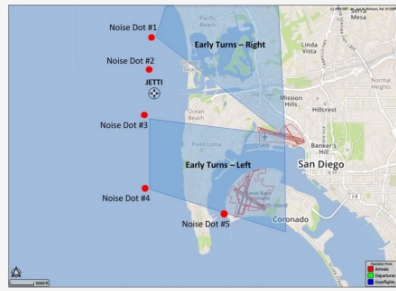
	2018	2019	2020	2021	2022
Total Early Turns	395	741	321	329	70

Departure Statistics

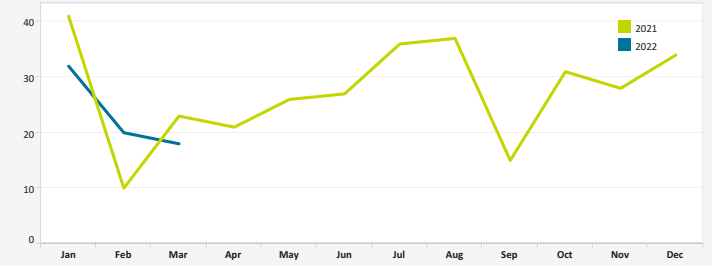
	Jan	Feb	Mar
Jets Turning Left	3,490	3,278	3,854
Between Z2000 and Noise Dots	466	378	451
Compliant with Nighttime departure Heading (290°)	231	231	352
Not Nighttime Compliant - Over La Jolla	9	25	28
Not Nighttime Compliant - Straight Out	4	2	12
Not Nighttime Compliant - East	2	0	5

Cause of Early Turns

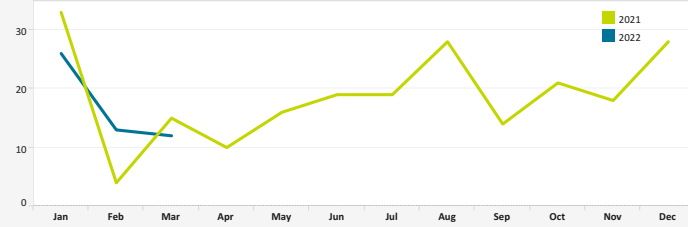
	Jan	Feb	Mar
Caused by ATC Vectors	30	20	15
Caused by Pilot Deviation	1	0	3
Caused by Weather	1	0	0



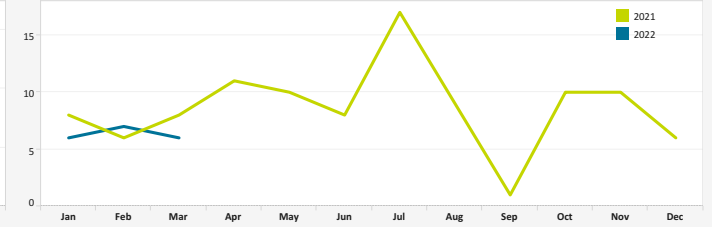
Total Early Turns



Over Point Loma



Over Mission Beach



Early Turns by Operator (March 2022)

Airline	Left Early Turns	Total Operator Departures	% Departures with Left Early Turns
Delta Air Lines	4	1,229	0.3%
American Airlines	3	1,259	0.2%
United Airlines	1	1,383	0.1%
SkyWest Airlines	1	1,715	0.1%
Hawaiian Airlines	1	124	0.8%
GOODWILL AIR LLC	1	2	50.0%
Ambrion Aviation Ltd	1	8	12.5%

Early Turn by Operator (March 2022)

Airline	Right Early Turns	Total Operator Departures	% Departures with Right Early Turns
NetJets	1	310	0.3%
General Aviation	1	813	0.1%
Flexjet	1	106	0.9%
FE 47 LLC	1	2	50.0%
Chrysler Aviation Inc	1	6	16.7%
BORLAND CARYN H TRUSTEE	1	2	50.0%

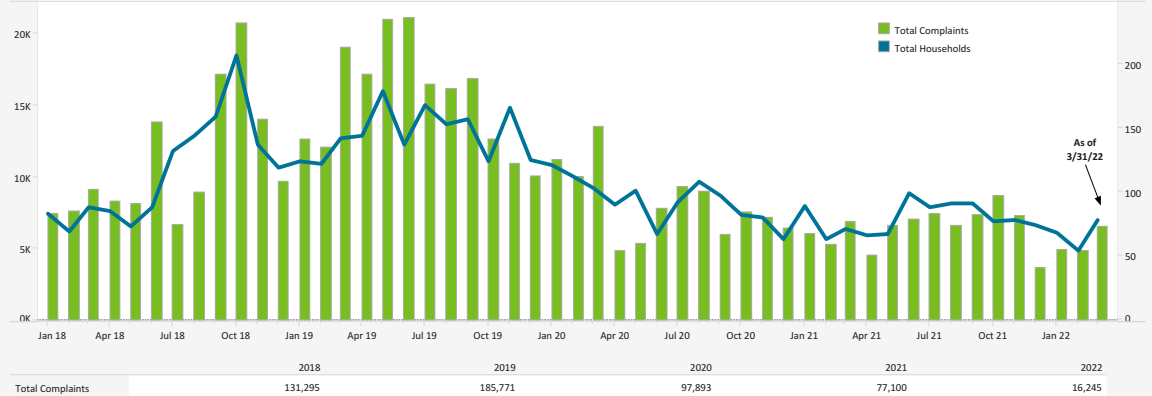
Data Disclaimer: We do our best to ensure that the data we release is complete, accurate and useful. However, because we do not create the data, and because the processing required to make the data useful is complex, we are not liable for omissions, inaccuracies or changes in the data.

NOISE COMPLAINT STATISTICS

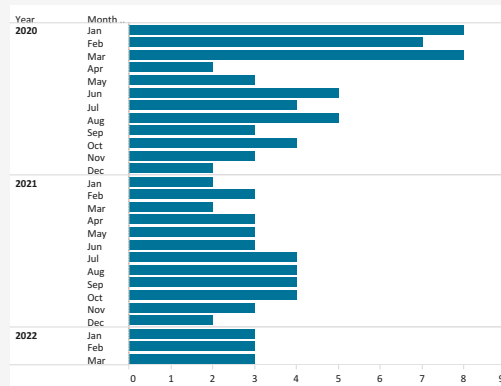


The Authority reports all complaints.

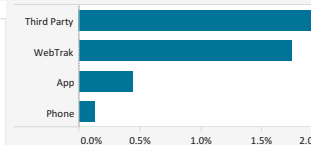
Total Complaints Compared to Total Households



Number of Households with 500+ Complaints per Month



Complaints by Contact Method



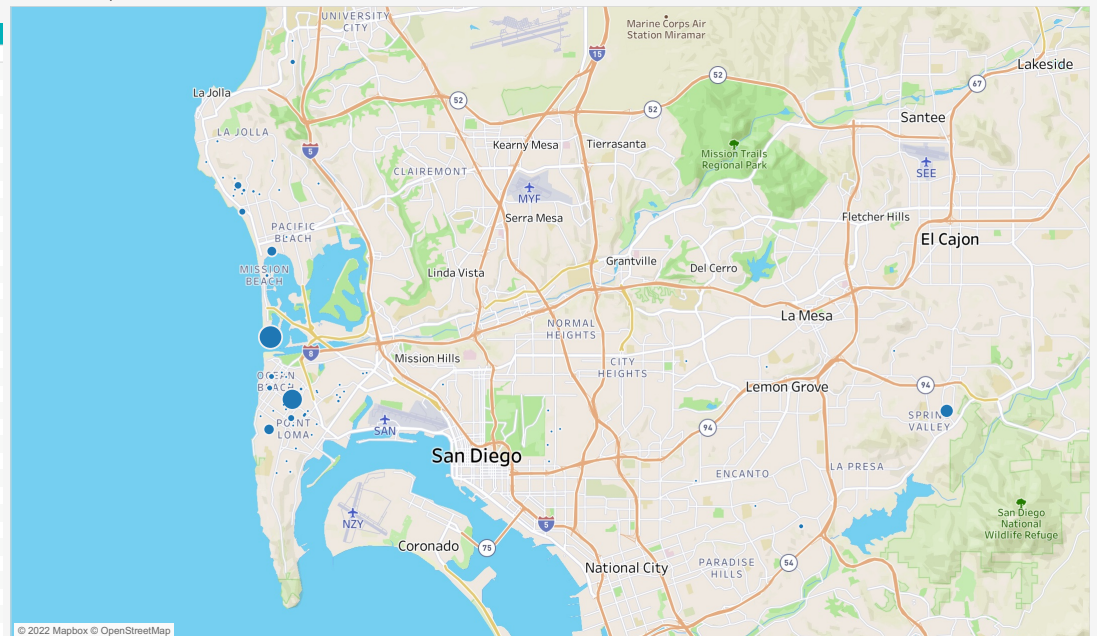
Disturbance Type

Disturbance Type	# Complaints	% Total
Too Loud	6,505	99.3%
Curfew Violation	25	0.4%
Suspected Off Course	8	0.1%
Overflight	7	0.1%
Too Low	2	0.0%
Pollution	1	0.0%

Number of Complaints by Neighborhood (March 2022)

Neighborhood	Total Complaints	Total Households
Grand Total	6,548	78
Mission Beach	2,084	6
Point Loma Heights	1,893	11
Spring Valley	652	1
Sunset Cliffs	494	3
Pacific Beach	358	4
Bird Rock	357	5
Ocean Beach	221	7
Del Mar	103	1
La Jolla Heights	87	2
Bay Terraces	67	1
Loma Portal	45	6
Muirlands	37	2
La Jolla Mesa	29	2
Roseville-Fleet Ridge	21	4
Beach Barber Tract	17	1
Casa De Oro-Mt. Helix	13	1
Lower Hermosa	10	1
North Park	10	1
Del Mar Heights	6	1
El Cerrito	6	1
La Playa	5	1
La Jolla Alta	4	1
La Mesa	4	1
South Park	4	3
Upper Hermosa	4	1
Loma Heights	3	1
Midway District	3	1
Wooded Area	3	2
La Jolla	2	1
Middletown	2	1
Encanto	1	1
Golden Hill	1	1
Jamul	1	1
North Bay Terraces	1	1

Location of Complaints



Data Disclaimer: We do our best to ensure that the data we release is complete, accurate and useful. However, because we do not create the data, and because the processing required to make the data useful is complex, we are not liable for omissions, inaccuracies or changes in the data.