

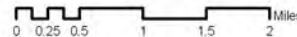
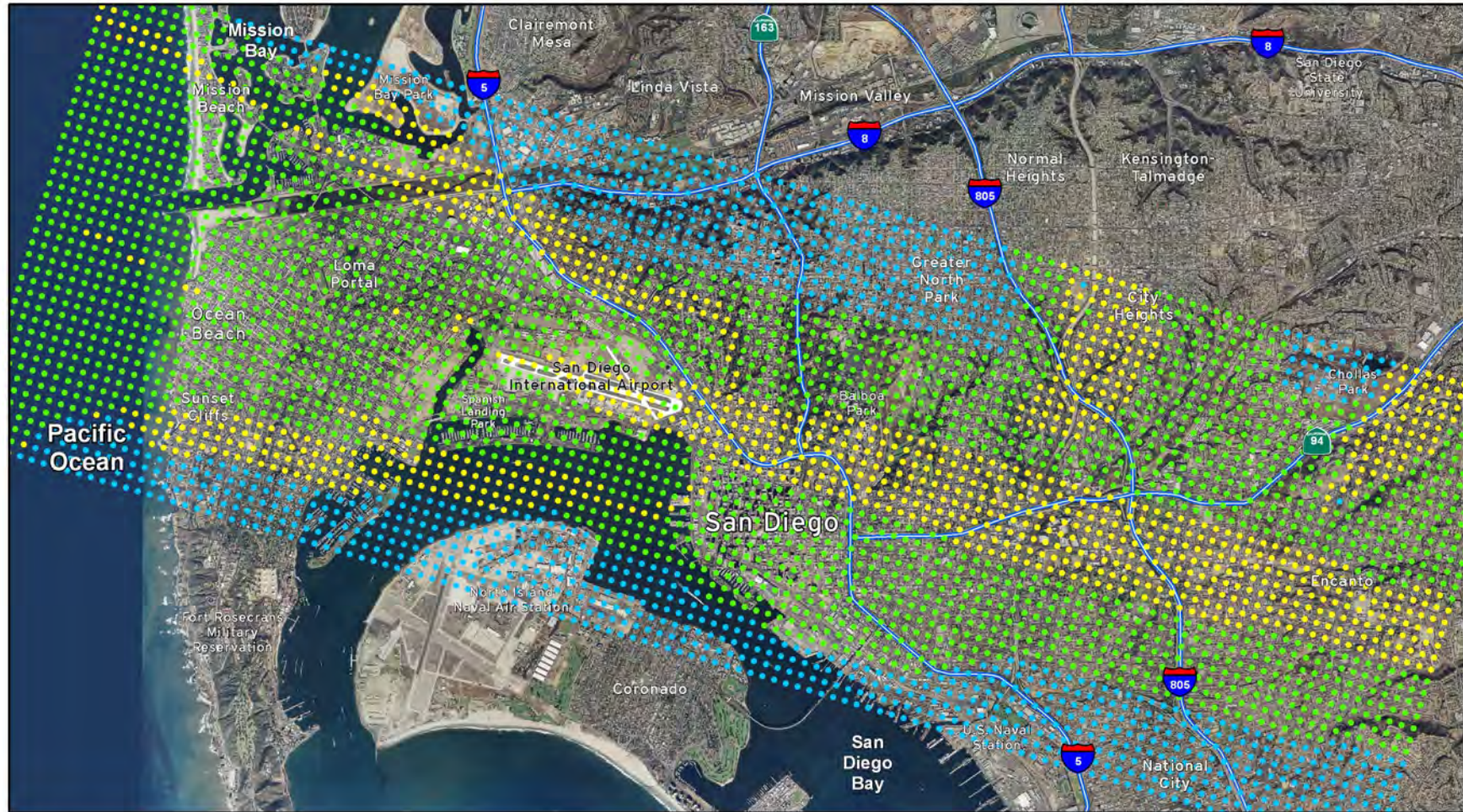
**Figure 5.1-20**

**NA80 Nighttime Change Analysis  
Proposed Project 2010 (Preferred Alternative)  
vs Baseline 2005**

Environmental Impact Report

Source: As noted in text

Prepared by: HNTB Corporation, 2007



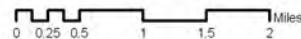
**Figure 5.1-21**

**NA80 Nighttime Change Analysis for Alternatives  
Proposed Project 2010 (Preferred Alternative)  
vs No Project 2010**

Environmental Impact Report

Source: As noted in text

Prepared by: HNTB Corporation, 2007



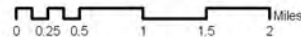
**Figure 5.1-22**

**NA80 Nighttime Change Analysis  
Proposed Project 2015 (Preferred Alternative)  
vs Baseline 2005**

Environmental Impact Report

Source: As noted in text

Prepared by: HNTB Corporation, 2007



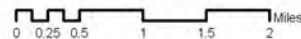
**Figure 5.1-23**

**NA80 Nighttime Change Analysis for Alternatives  
Proposed Project 2015 (Preferred Alternative)  
vs No Project 2015**

Environmental Impact Report

Source: As noted in text

Prepared by: HNTB Corporation, 2007



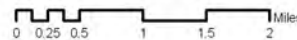
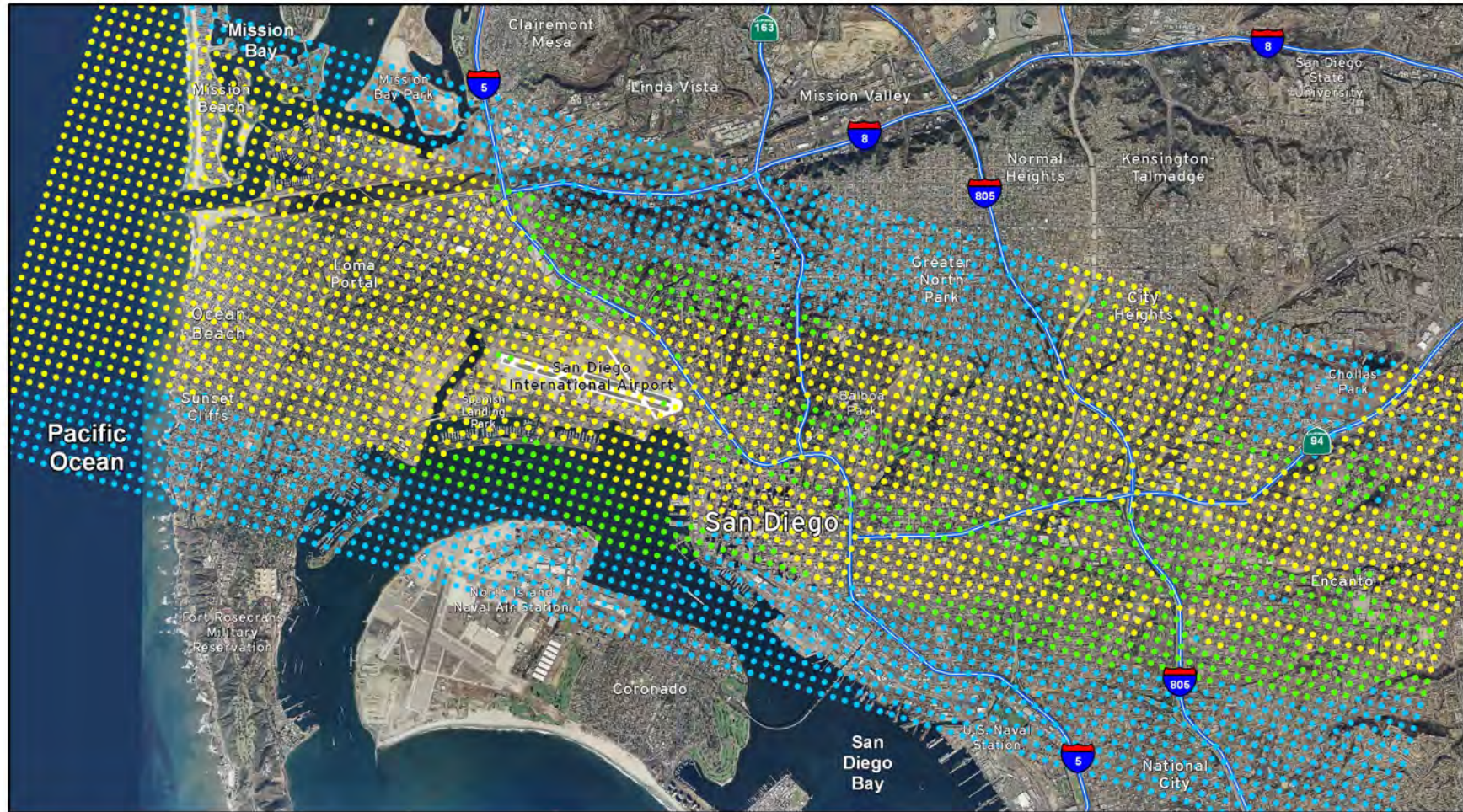
**Figure 5.1-24**

**NA80 Nighttime Change Analysis  
Proposed Project 2030 (Preferred Alternative)  
vs Baseline 2005**

Environmental Impact Report

Source: As noted in text

Prepared by: HNTB Corporation, 2007



**Figure 5.1-25**

**NA80 Nighttime Change Analysis for Alternatives  
Proposed Project 2030 (Preferred Alternative)  
vs No Project 2030**

Environmental Impact Report

Source: As noted in text

Prepared by: HNTB Corporation, 2007



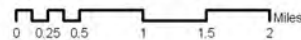
**Figure 5.1-26**

**NA90 Nighttime Change Analysis  
Proposed Project 2010 (Preferred Alternative)  
vs Baseline 2005**

Environmental Impact Report

Source: As noted in text

Prepared by: HNTB Corporation, 2007



**Figure 5.1-27**

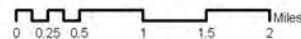
**NA90 Nighttime Change Analysis for Alternatives  
Proposed Project 2010 (Preferred Alternative)  
vs No Project 2010**

Environmental Impact Report

Source: As noted in text

Prepared by: HNTB Corporation, 2007





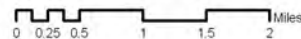
**Figure 5.1-28**

**NA90 Nighttime Change Analysis  
Proposed Project 2015 (Preferred Alternative)  
vs Baseline 2005**

Environmental Impact Report

Source: As noted in text

Prepared by: HNTB Corporation, 2007



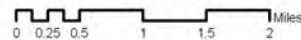
**Figure 5.1-29**

**NA90 Nighttime Change Analysis for Alternatives  
Proposed Project 2015 (Preferred Alternative)  
vs No Project 2015**

Environmental Impact Report

Source: As noted in text

Prepared by: HNTB Corporation, 2007



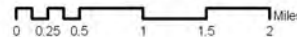
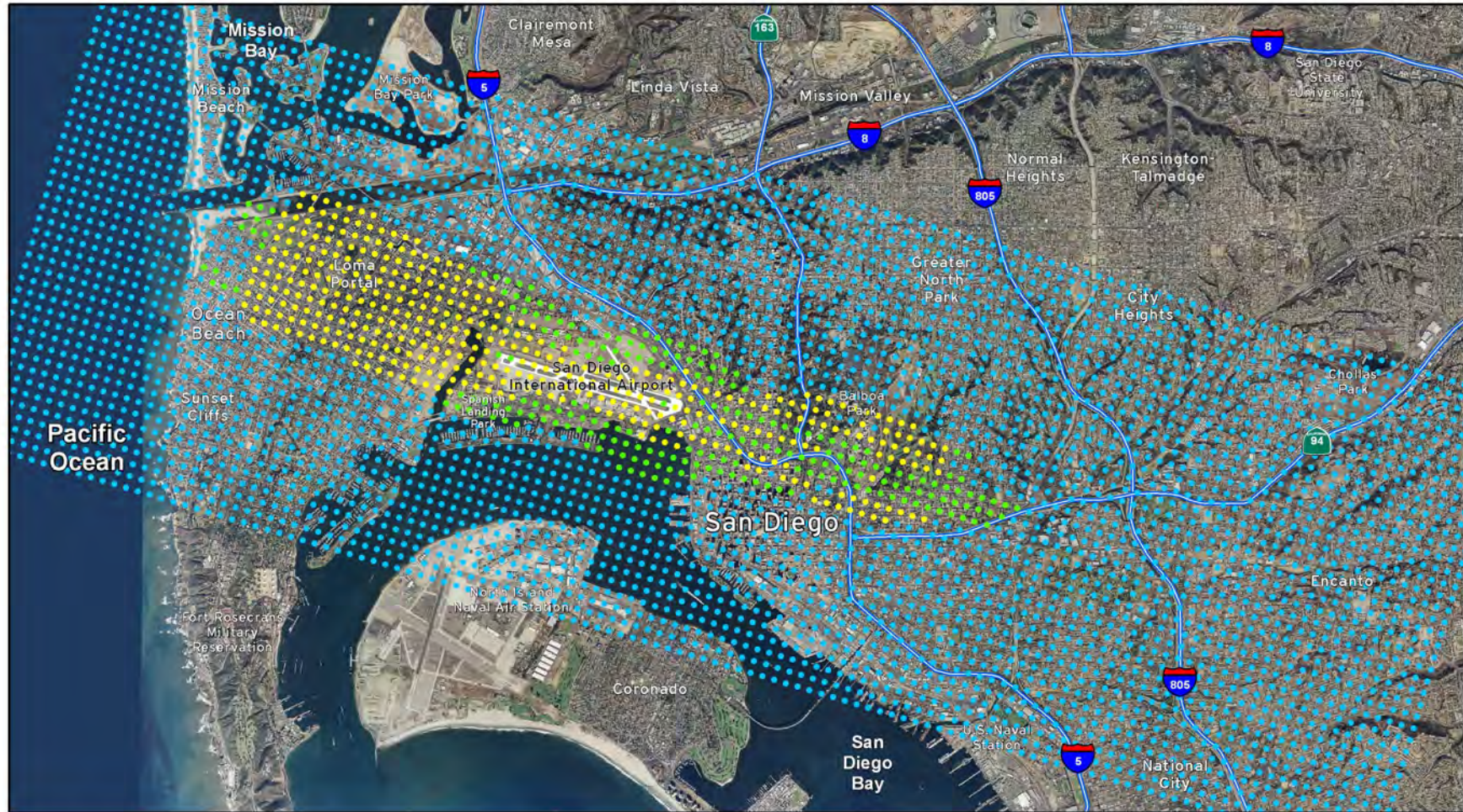
**Figure 5.1-30**

**NA90 Nighttime Change Analysis  
Proposed Project 2030 (Preferred Alternative)  
vs Baseline 2005**

Environmental Impact Report

Source: As noted in text

Prepared by: HNTB Corporation, 2007



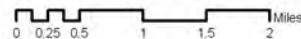
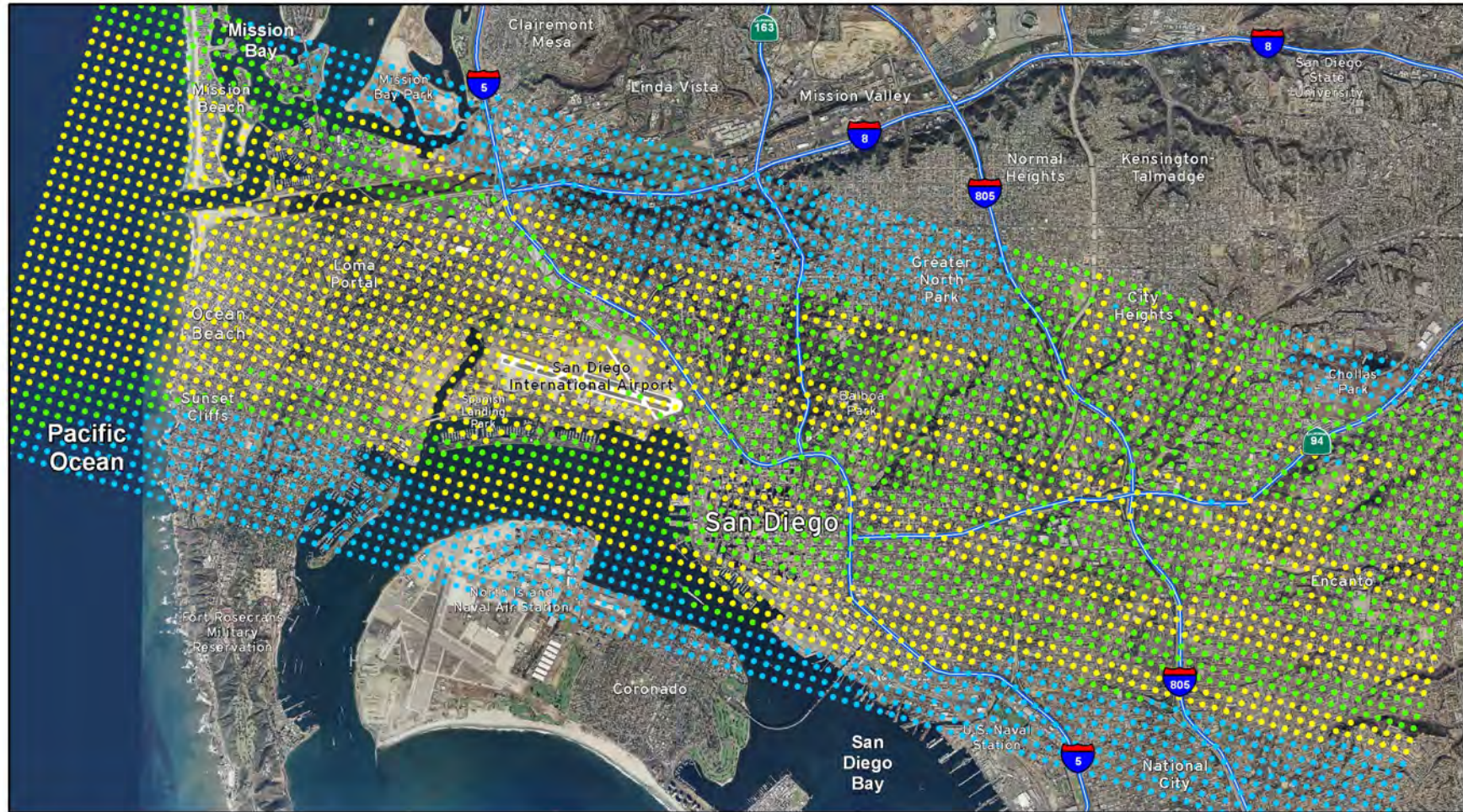
**Figure 5.1-31**

**NA90 Nighttime Change Analysis for Alternatives  
Proposed Project 2030 (Preferred Alternative)  
vs No Project 2030**

Environmental Impact Report

Source: As noted in text

Prepared by: HNTB Corporation, 2007



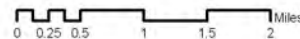
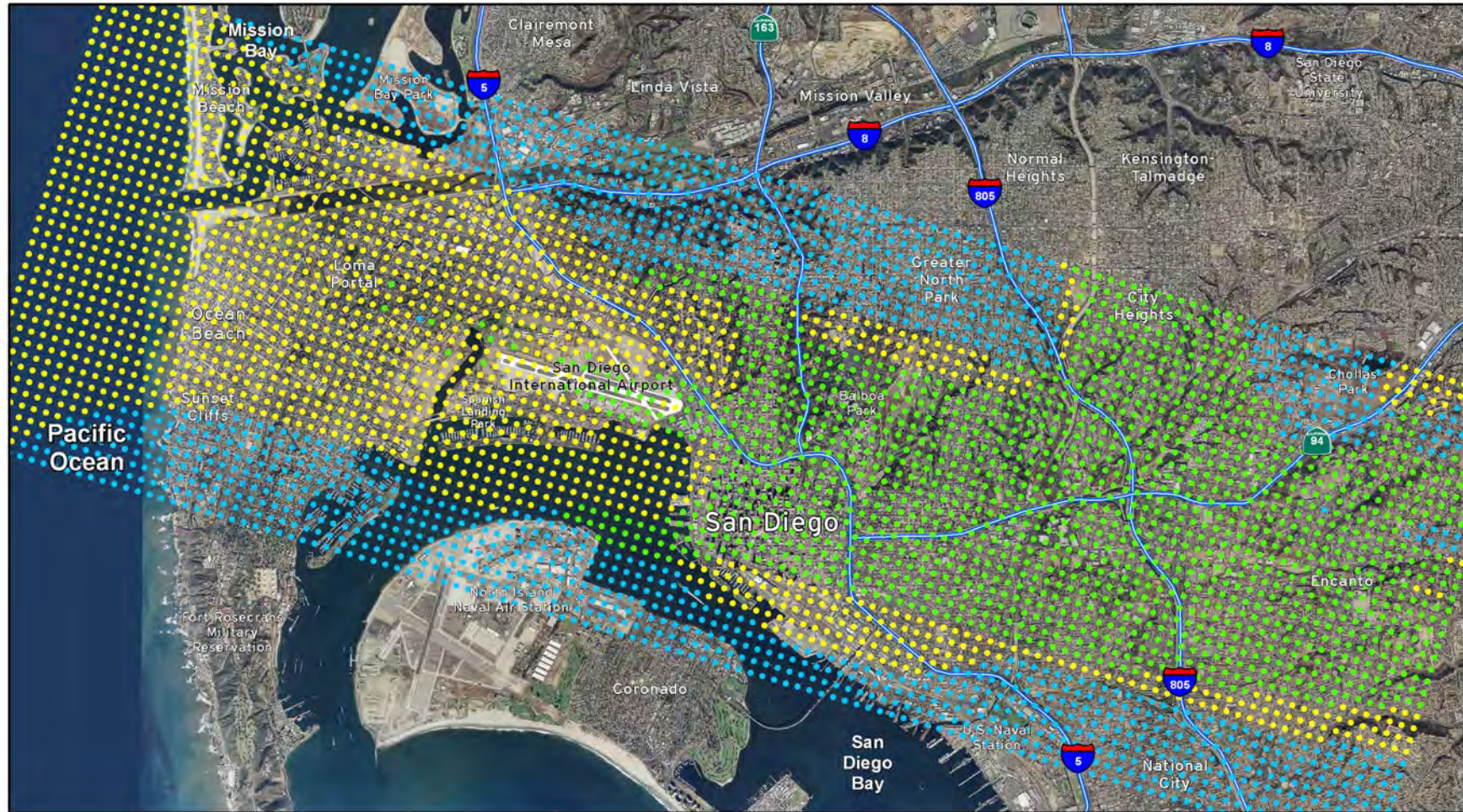
**Figure 5.1-32**

**NA80 Nighttime Change Analysis  
East Terminal Alternative 2010  
vs Baseline 2005**

Environmental Impact Report

Source: As noted in text

Prepared by: HNTB Corporation, 2007



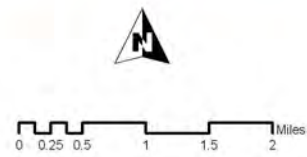
**Figure 5.1-33**

**NA80 Nighttime Change Analysis for Alternatives  
East Terminal Alternative 2010  
vs No Project 2010**

Environmental Impact Report

Source: As noted in text

Prepared by: HNTB Corporation, 2007



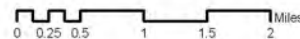
**Figure 5.1-34**

**NA80 Nighttime Change Analysis  
East Terminal Alternative 2015  
vs Baseline 2005**

Environmental Impact Report

Source: As noted in text

Prepared by: HNTB Corporation, 2007



**Figure 5.1-35**

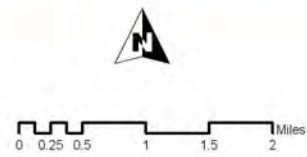
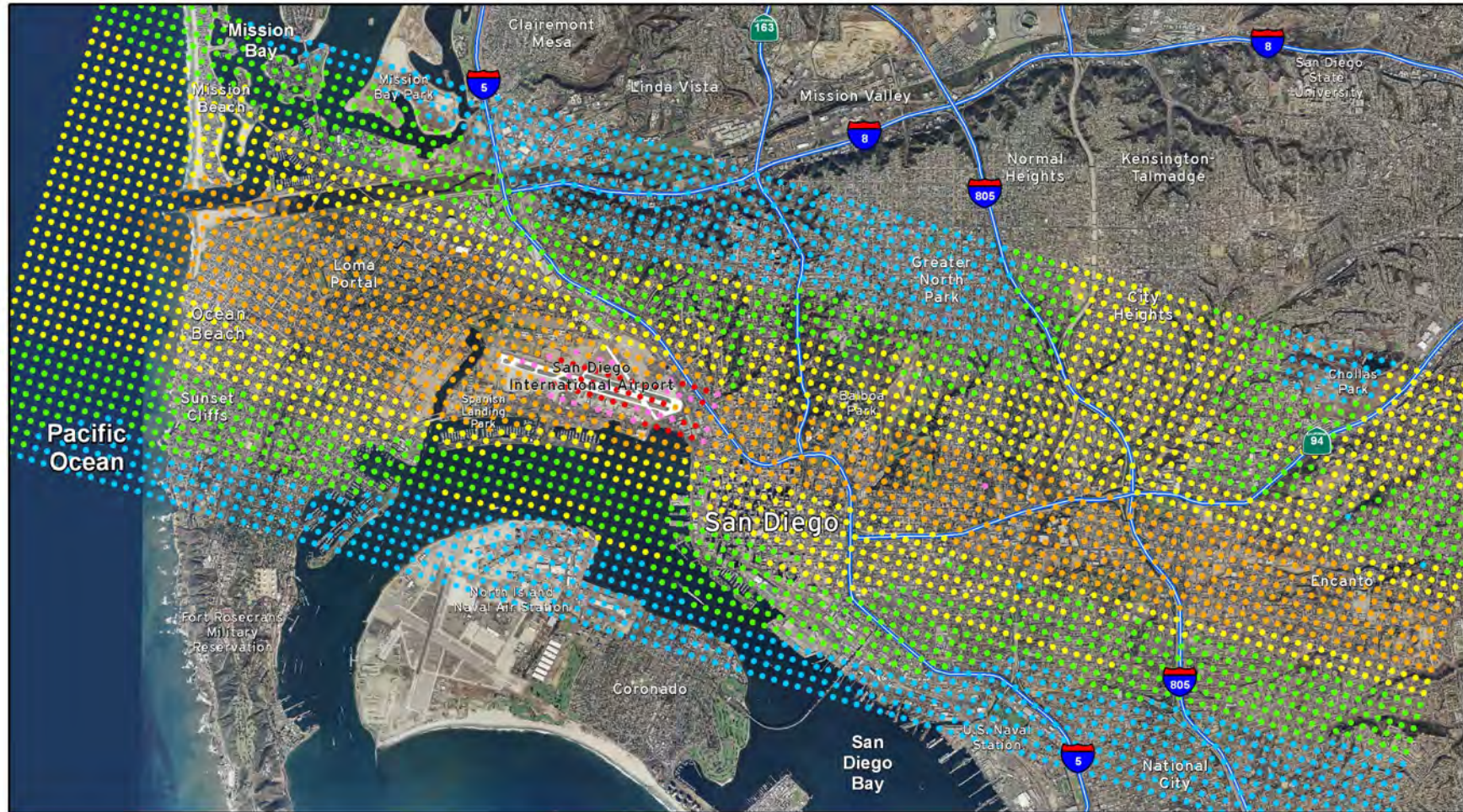
**NA80 Nighttime Change Analysis for Alternatives  
East Terminal Alternative 2015  
vs No Project 2015**

Environmental Impact Report

Source: As noted in text

Prepared by: HNTB Corporation, 2007





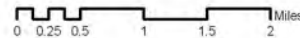
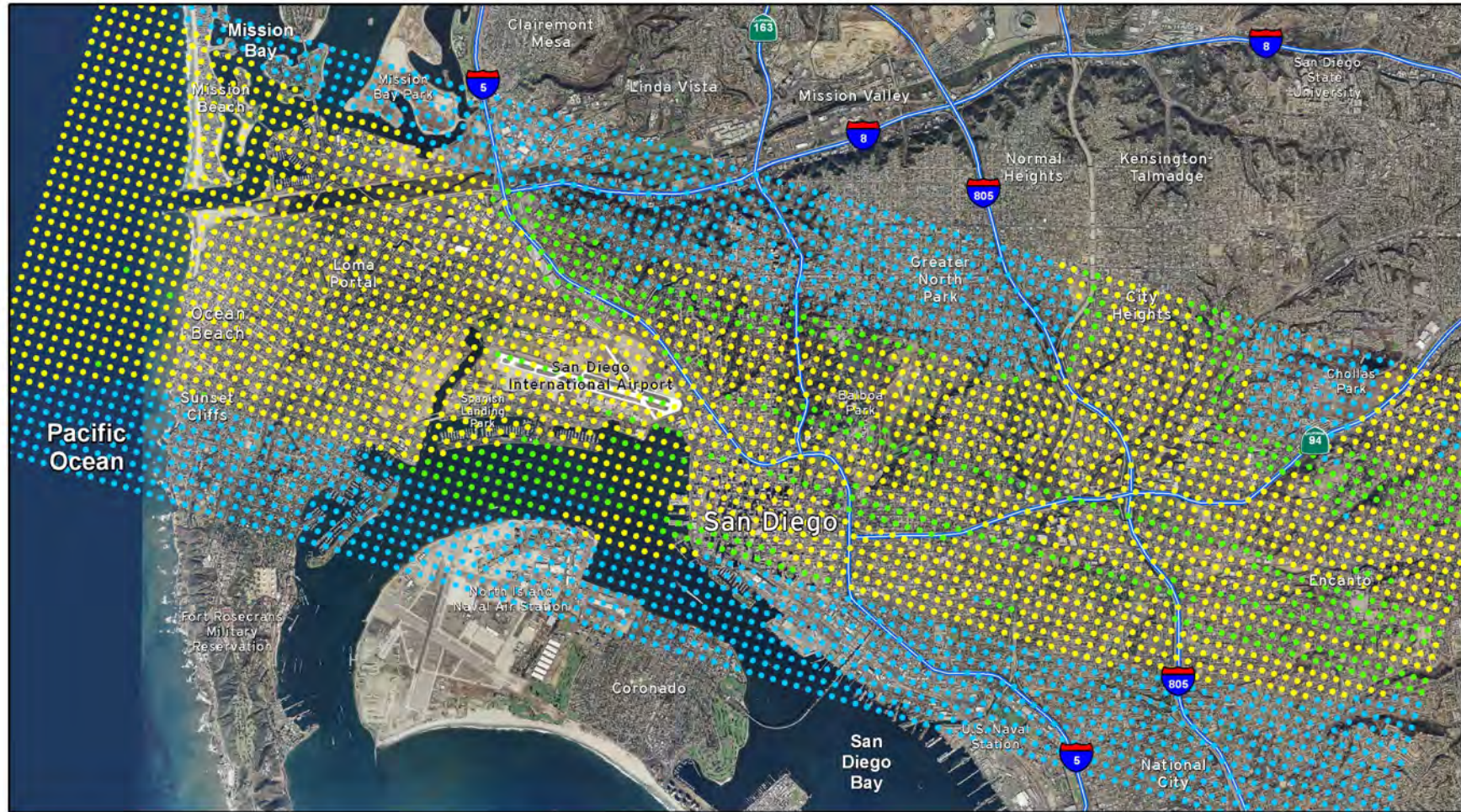
**Figure 5.1-36**

**NA80 Nighttime Change Analysis  
East Terminal Alternative 2030  
vs Baseline 2005**

Environmental Impact Report

Source: As noted in text

Prepared by: HNTB Corporation, 2007



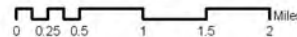
**Figure 5.1-37**

**NA80 Nighttime Change Analysis for Alternatives  
East Terminal Alternative 2030  
vs No Project 2030**

Environmental Impact Report

Source: As noted in text

Prepared by: HNTB Corporation, 2007



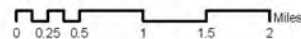
**Figure 5.1-38**

**NA90 Nighttime Change Analysis  
East Terminal Alternative 2010  
vs Baseline 2005**

Environmental Impact Report

Source: As noted in text

Prepared by: HNTB Corporation, 2007



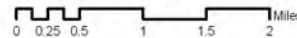
**Figure 5.1-39**

**NA90 Nighttime Change Analysis for Alternatives  
East Terminal Alternative 2010  
vs No Project 2010**

Environmental Impact Report

Source: As noted in text

Prepared by: HNTB Corporation, 2007



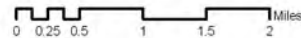
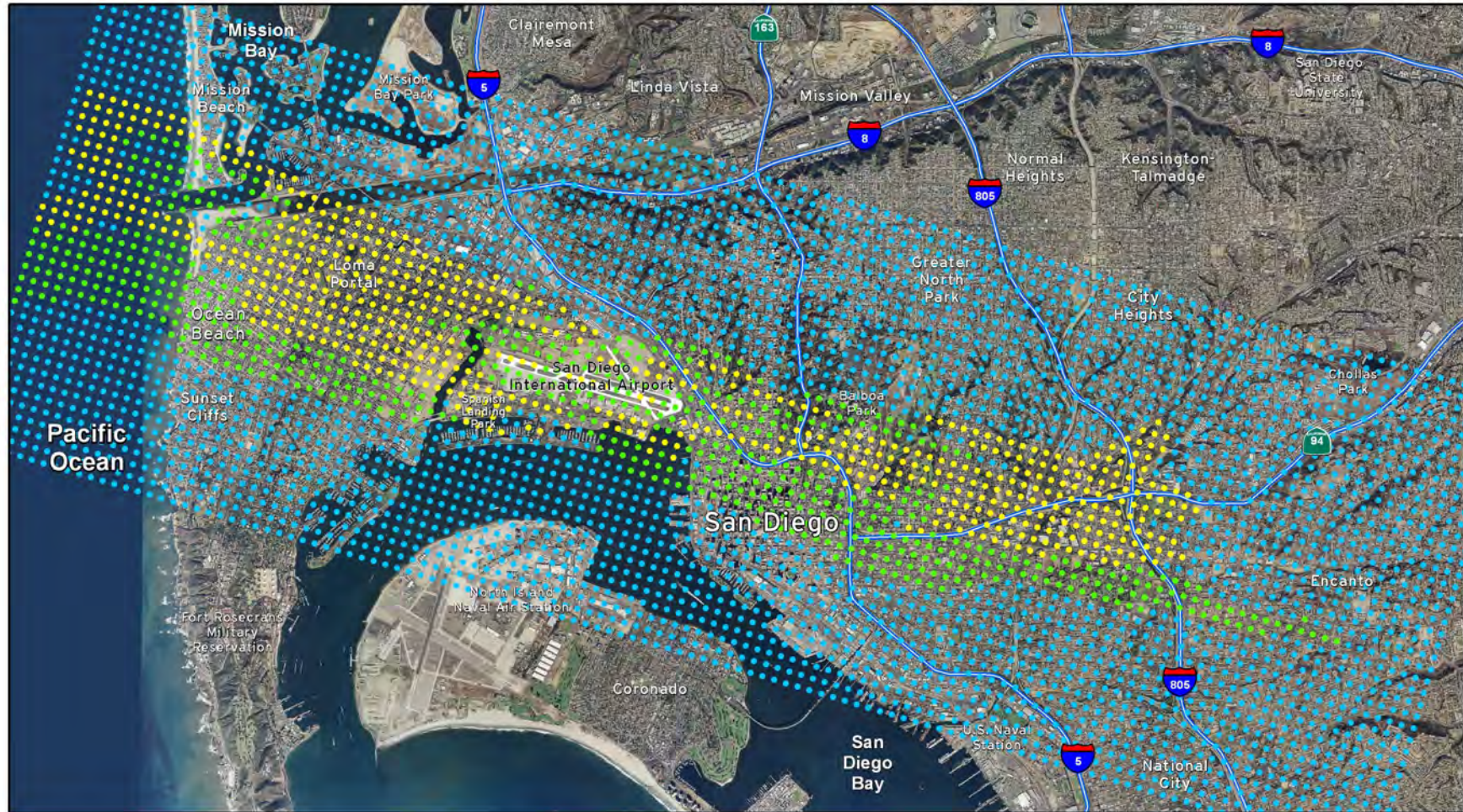
**Figure 5.1-40**

**NA90 Nighttime Change Analysis  
East Terminal Alternative 2015  
vs Baseline 2005**

Environmental Impact Report

Source: As noted in text

Prepared by: HNTB Corporation, 2007

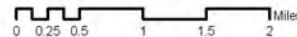


**Figure 5.1-41**

**NA90 Nighttime Change Analysis for Alternatives  
East Terminal Alternative 2015  
vs No Project 2015  
Environmental Impact Report**

Source: As noted in text

Prepared by: HNTB Corporation, 2007



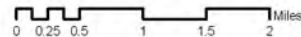
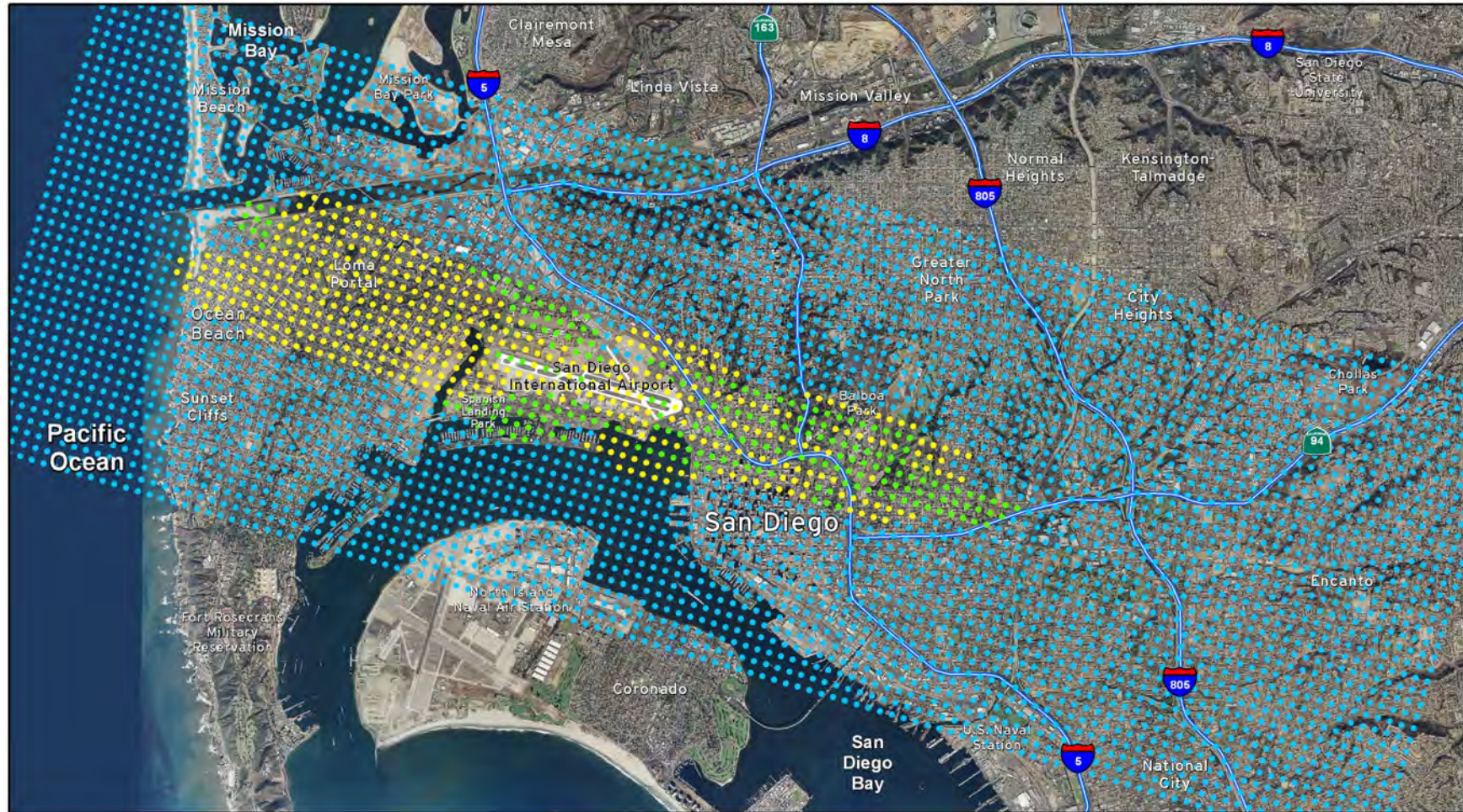
**Figure 5.1-42**

**NA90 Nighttime Change Analysis  
East Terminal Alternative 2030  
vs Baseline 2005**

Environmental Impact Report

Source: As noted in text

Prepared by: HNTB Corporation, 2007



**Figure 5.1-43**

**NA90 Nighttime Change Analysis for Alternatives  
East Terminal Alternative 2030  
vs No Project 2030**

Environmental Impact Report

Source: As noted in text

Prepared by: HNTB Corporation, 2007