

FIGURES

FIGURES

Intentionally Left Blank



FIGURES

Intentionally Left Blank



**SAN Storm Water
Management Plan
June 2015**



0 0.25 0.5 1 1.5
Miles

GENERAL VICINITY MAP
San Diego International Airport

FIGURE

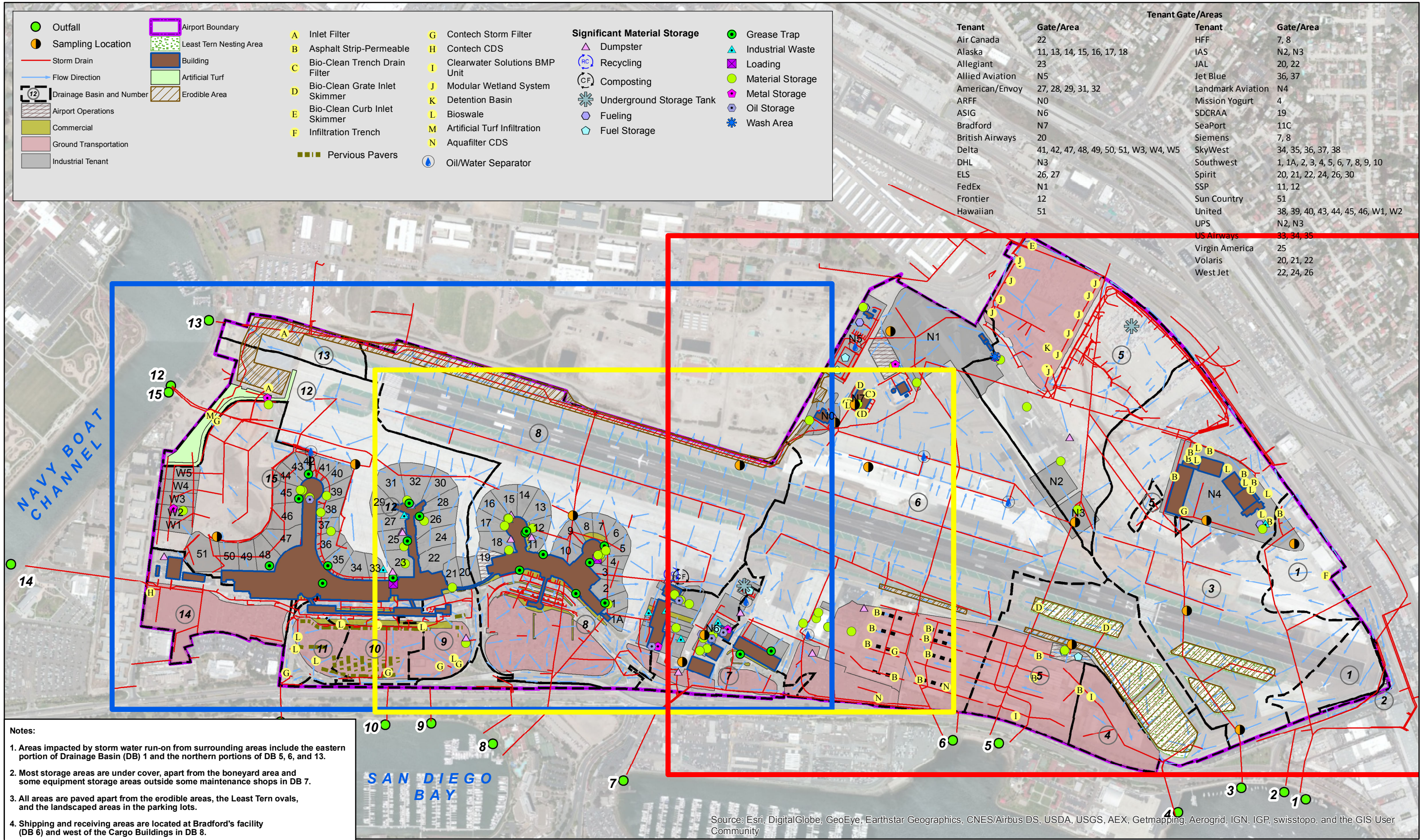
2

FIGURES

Intentionally Left Blank

FIGURES

Intentionally Left Blank



Notes:

1. Areas impacted by storm water run-on from surrounding areas include the eastern portion of Drainage Basin (DB) 1 and the northern portions of DB 5, 6, and 13.
2. Most storage areas are under cover, apart from the boneyard area and some equipment storage areas outside some maintenance shops in DB 7.
3. All areas are paved apart from the erodible areas, the Least Tern ovals, and the landscaped areas in the parking lots.
4. Shipping and receiving areas are located at Bradford's facility (DB 6) and west of the Cargo Buildings in DB 8.
5. Equipment maintenance/storage areas are mainly inside, and east of Cargo Buildings in DB 7. Minor maintenance is also performed in ramp areas.
6. No significant spills or leaks have occurred at SAN in the last five years.
7. Storm drain inlets are shown on map attached to SC01 in Appendix B.

PROJECT: 5025-13-0031
DATE: JUNE 2015
DRAWN BY: RMH
CHECKED BY: AJA

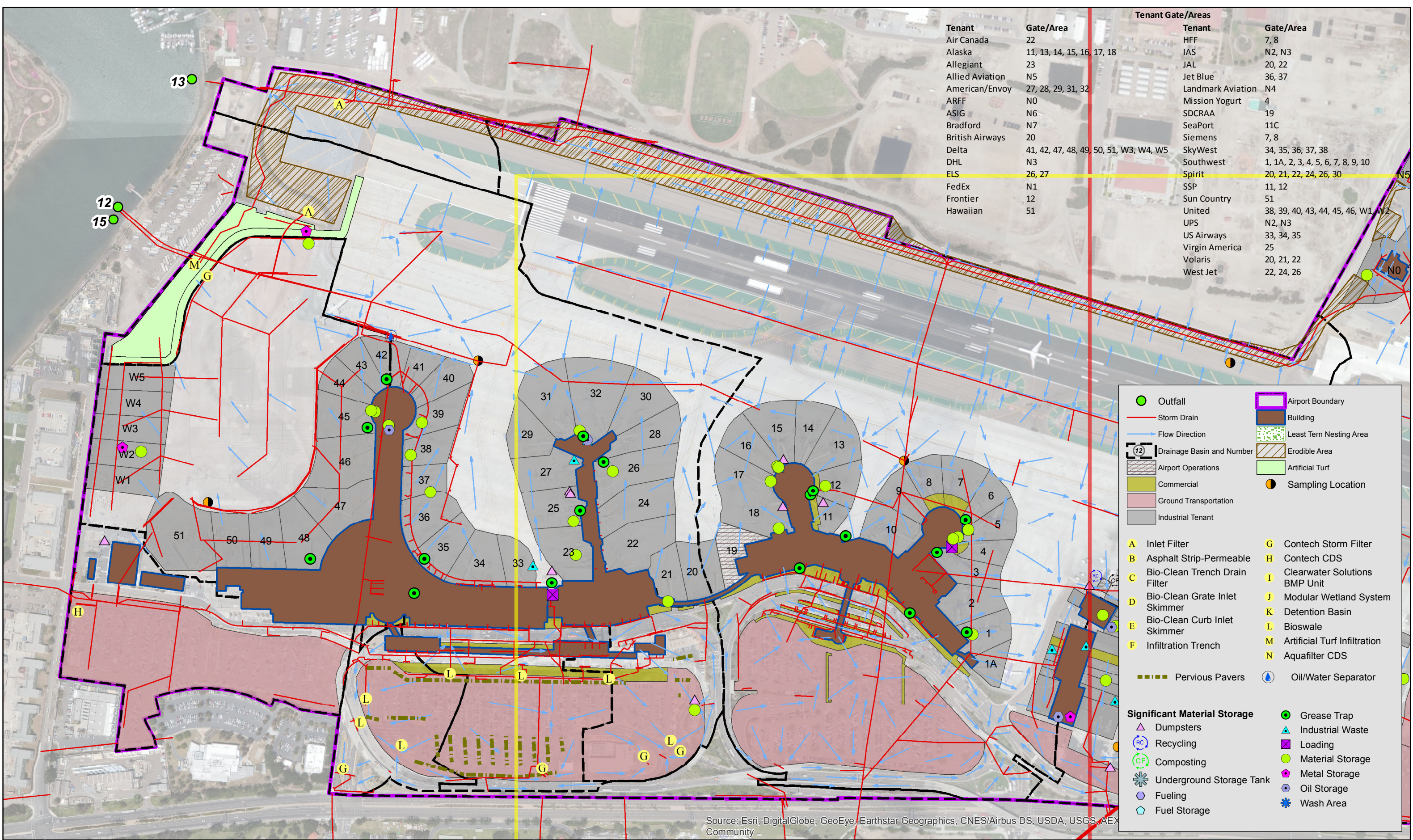


**SAN DIEGO
INTERNATIONAL AIRPORT**
San Diego, California

FIGURE 4
**STORM WATER MANAGEMENT PLAN
AT SAN DIEGO INTERNATIONAL AIRPORT**

FIGURES

Intentionally Left Blank



PROJECT: 5025-13-0031
DATE: JUNE 2015
DRAWN BY: RMH
CHECKED BY: AJA



0 0.08 Miles

amec foster wheeler

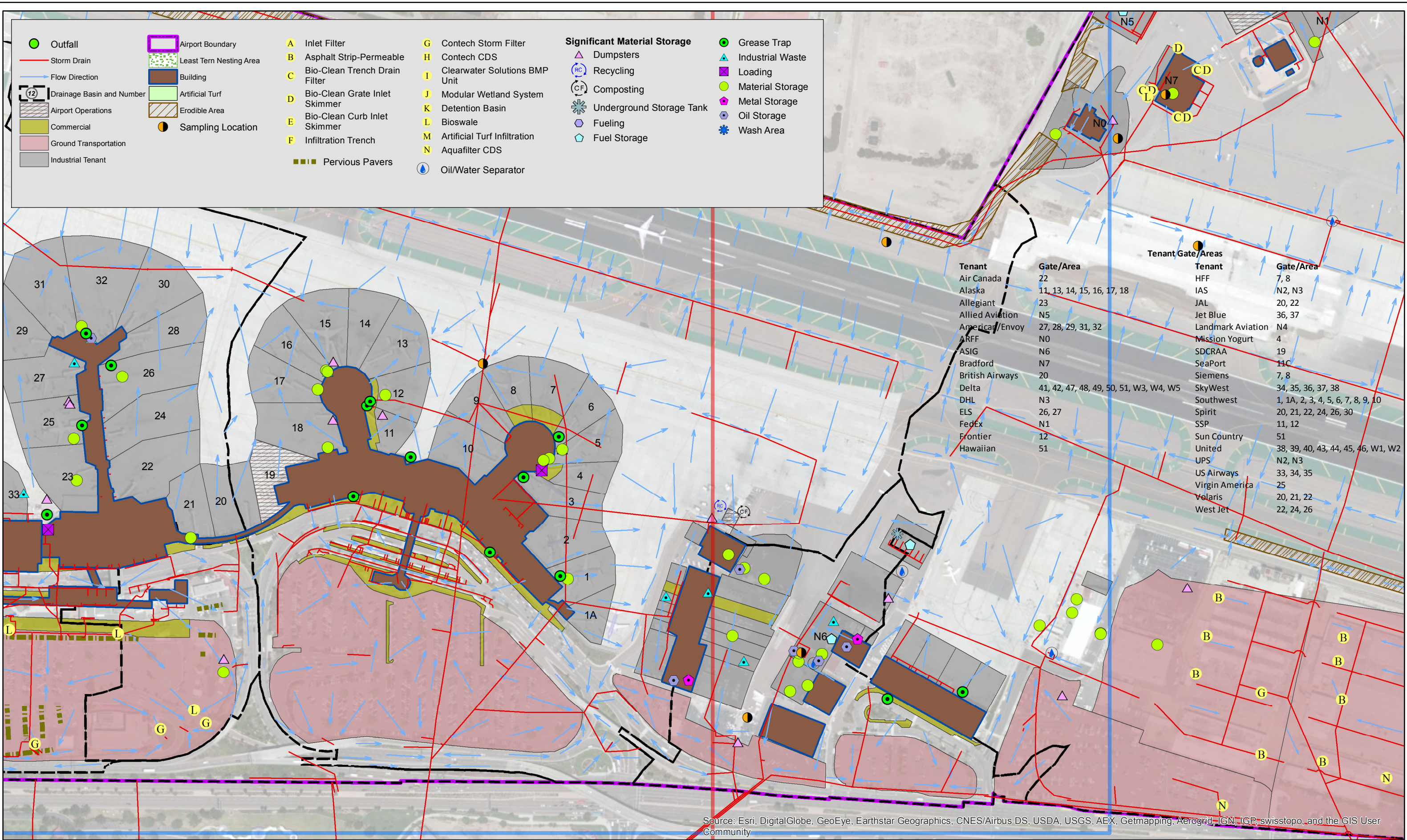


SAN DIEGO
INTERNATIONAL AIRPORT
San Diego, California

FIGURE 5
STORM WATER MANAGEMENT PLAN
AT SAN DIEGO INTERNATIONAL AIRPORT

FIGURES

Intentionally Left Blank



PROJECT: 5025-13-0031
DATE: JUNE 2015
DRAWN BY: RMH
CHECKED BY: AJA



0 0.06
Miles

amec foster wheeler

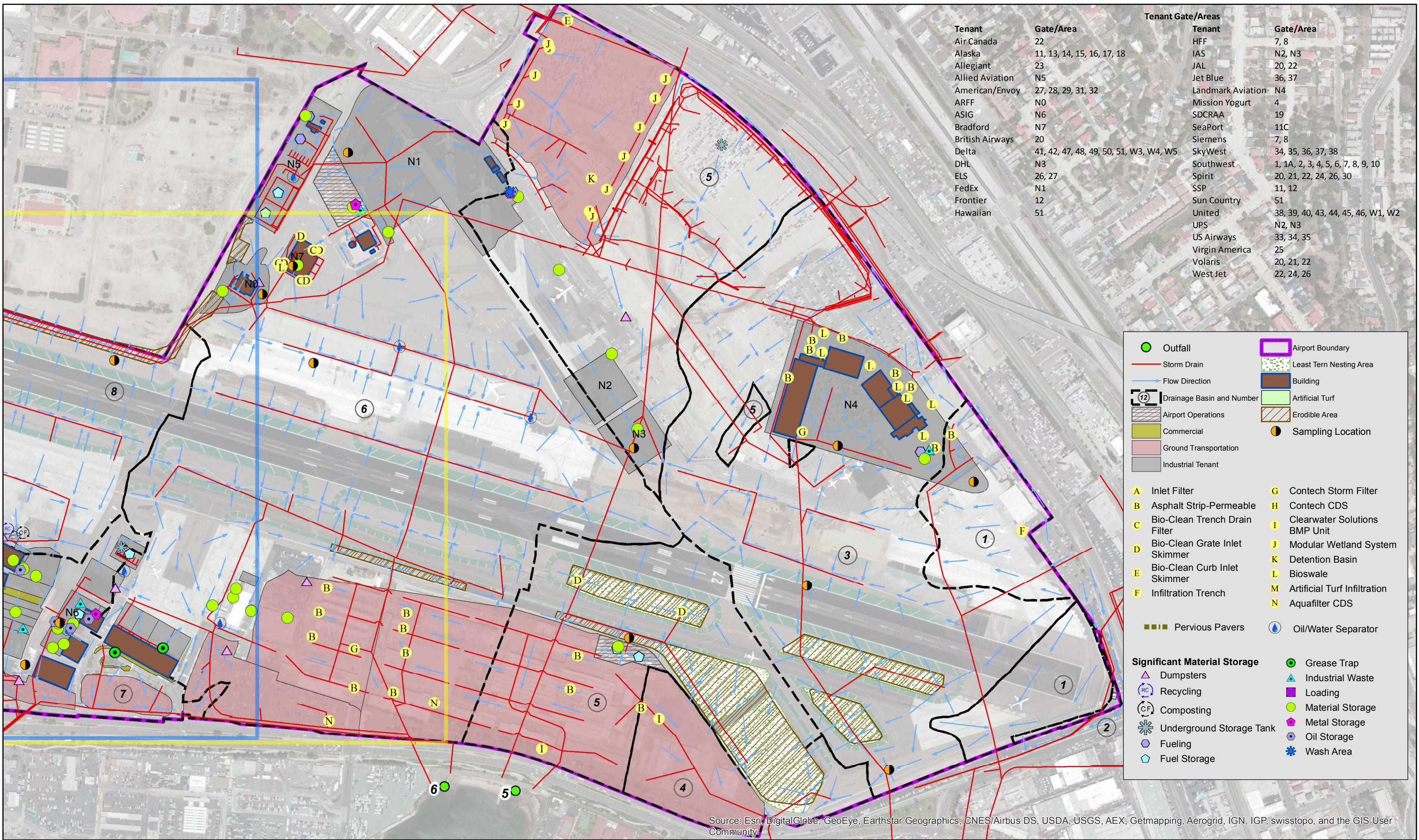


SAN DIEGO
INTERNATIONAL AIRPORT
San Diego, California

FIGURE 6
STORM WATER MANAGEMENT PLAN
AT SAN DIEGO INTERNATIONAL AIRPORT

FIGURES

Intentionally Left Blank



PROJECT: 5025-13-0031
DATE: JUNE 2015
DRAWN BY: RMH
CHECKED BY: AJA



0 0.1 Miles

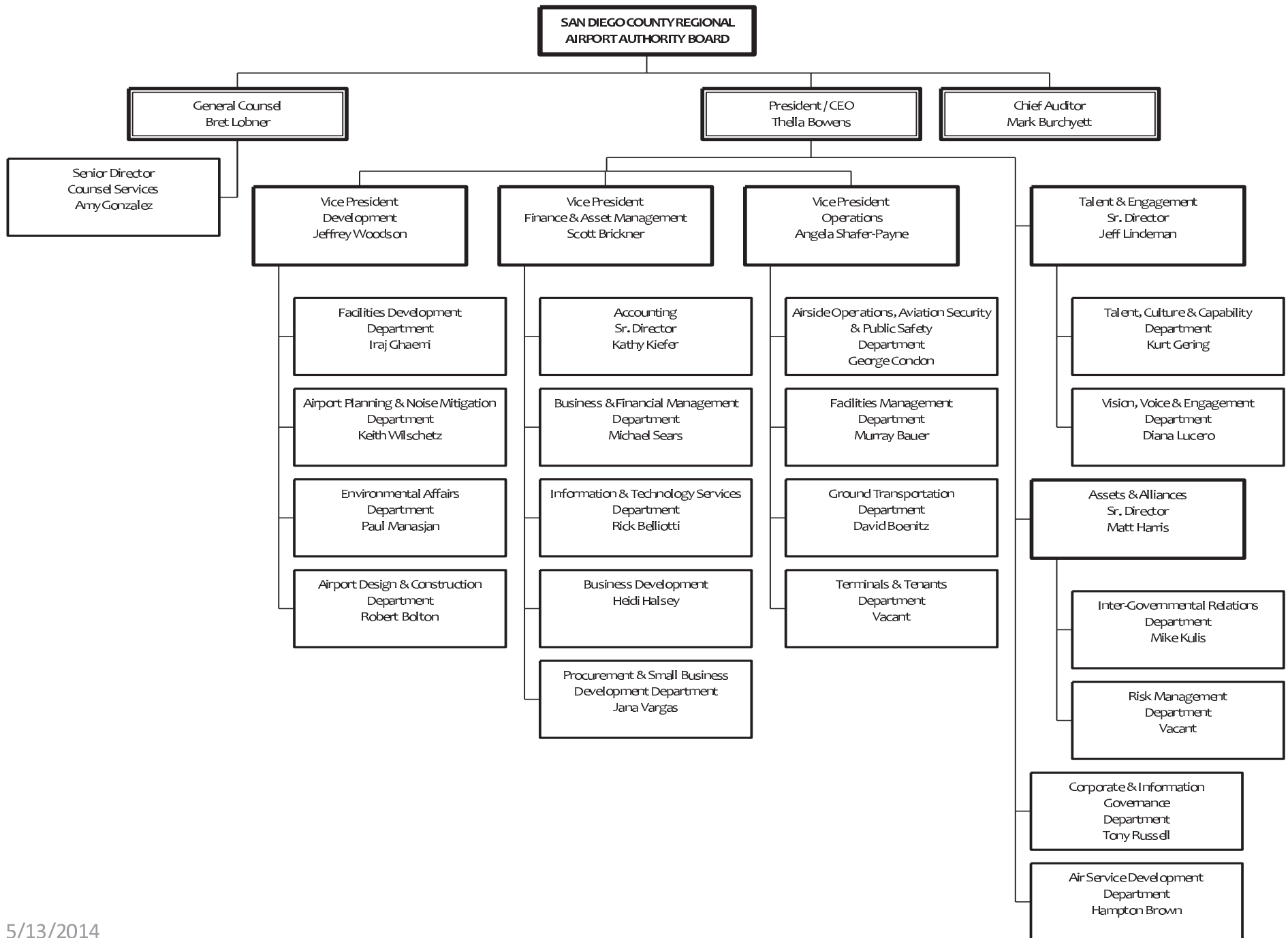
amec foster wheeler

SAN DIEGO
INTERNATIONAL AIRPORT
San Diego, California

FIGURE 7
STORM WATER MANAGEMENT PLAN
AT SAN DIEGO INTERNATIONAL AIRPORT

FIGURES

Intentionally Left Blank



FIGURES

Intentionally Left Blank