

## Tenant Summary Sheet

### Tenant:

SDCRAA

SIC Code: 4581

Primary Activity: Airport Maintenance & Operations

Drainage Area: 1 through 14

Nearest MS4 inlet: < 200 feet

Drainage Area:

Contact: Hilary Gish, Maintenance Supervisor

E: hgish@san.org, P: 619- 400-2735, F: 619-400-7276

Environmental Contact: Annie Martin

E: amartin@san.org, P: 619-400-2793

Secondary Contact: Marcos Corona, Lead Maintenance Worker

E: mcorona@san.org, P: 619-400-2747

Address: 3835 N. Harbor Drive  
San Diego, CA 92101

### Tenant Description and Primary Industrial Activities:

1. Road sweeping: Cannon is contracted to sweep the roads into and out of the airport Monday through Friday, 1 am - 4 am. Facilities Maintenance sweeps the ramp area 4 times a month and as needed or requested. The debris/sweepings are vacuumed up into the unit and are disposed of in the lowboy container between ARFF station and the control tower.
2. Ramp scrubbing: Facilities Maintenance performs ramp scrubbing 4 times a week using Tennant 1550 scrubbers. A biodegradable waxy soap is used; it is specifically made for oil and grease removal. This soap comes in 50 gallon drum containers and are presently stored behind the control tower in the bone yard. The scrubbing schedule separated into areas and rotates daily to cover the entire A.O.A. The areas scrubbed are: Terminal 2 West, Terminal 2 East, Terminal 1 West, Terminal 1 East, and Commuter Terminal. Other areas are done on request, including the north ramp/cargo areas. Each area gets 3 to 4 dates completed on the scheduled day. The next day, the following area is scheduled for scrubbing. The scrubber is used approximately 6 to 7 hours on the days scrubbing is scheduled precluding personnel shortages, holidays, and rainy days. The wash water and soap mixture is recycled into the machine. Water is replaced daily and waste water is disposed of at the dewatering tank located by the trash compactor close to the East Ramp. In addition to this, Cyclone Surface Cleaning, Inc is contracted to perform pressure (10,000 to 15,000 psi) cleaning for ramp areas twice a year.
3. Runway rubber removal: Is conducted by Abhe & Svoboda, every 6-8 weeks, depending on skidometer testing results. They are an all in one system which sprays on the rubber removal solution, scrubs the runway, rinses and vacuums up the rubber particles, removal solution and water. The rubber removal solution is a biodegradable chemical (DC101), 55 gallons of the solution is used for every 10,000 square feet of surface. Only the solution needed is brought on site during each rubber removal. Ocean Blue is responsible for disposal of waste and waste water generated.
4. Oil/water separators: There are 4 oil water separators at the airport that Facilities Maintenance is aware of: 2 at the north ramp, 1 northeast of the Commuter Terminal, and 1 near the ASIG wash rack and American Airlines maintenance shop. The oil water separator on the west ramp north of Terminal 2 West has been removed due to construction. Each installed oil water separator has an alarm system. If the oil reaches a certain level, or oil leaks to the ground, an alarm goes off. Alarms are checked weekly. Facilities Maintenance knew of only one time when an oil water separator was pumped out, and did not recall the contractor.
5. The Vortech unit previously located on the west end of Terminal 2 has been replaced with a filter fabric. This unit has not received any maintenance since installation and does not receive regular inspections.
6. Ocean Blue maintains a series of drain inlet inserts in the rental car lot, cell phone parking area, cargo area, across from the triturator, and the Least Tern nesting area. These are cleaned as needed in the dry season. During the rain season they are cleaned monthly and after each rain event.
7. Fire hydrant flushing: The City of San Diego is responsible for fire hydrant flushing at the airport once a year.

## Tenant Summary Sheet

### Tenant:

SDCRAA

8. Fire suppression system testing is done quarterly. All water flows to dirt area and evaporates or infiltrates. If no dirt area is available, then it is taken to the sewer.
9. Trash/recycling: Waste Management empties all trash and recycling bins daily. For T1 the trash compactor is emptied on a daily basis and the recycling compactor is emptied twice weekly. For T2 west the trash compactor has currently been removed due to construction. The trash compactor near American Airlines is emptied three times a week. Multiple 3-yard and 6-yard roll-off bins are spread throughout the airport. Each has a schedule for when it is emptied ranging from daily to once a week. The four 40-yard roll-off bins for wood pallets and large materials are emptied as needed.
10. FlagShip cleans the trash compactor area and collects trash and recyclables from around the airport and puts it in the trash or recycling bins. FlagShip has also been contracted to pressure wash areas around the dumpsters as needed. FlagShip uses two pressure washers and captures all waste water.
11. Spill kits: spill response materials (kits contain kitty litter, sandbags, plastic tarps, absorbent sox and pads, shovels, and brooms). They are located in various places on the Air Field. There are three spill kits. One is by the North Ramp, one by Gate 21, and one is by the Southwest trash compactors. Ocean Blue is responsible for stocking the Spill Kits when they run low on equipment.
12. Storm drain maintenance: United Storm Water, Inc. is contracted to clean out the storm water conveyance system at the airport quarterly. This is done by using 2 jetters and section by section, 200 to 300 feet per section. All debris and wastes are collected and disposed of at the dewatering bin.
13. Significant materials storage: Most significant materials are stored indoors, inside shop 22 (by gate 22), and the machining/welding shop (Shop 2 on Winship Lane). Pesticides, diesel, gasoline, and turpentine are stored in flammable materials storage lockers near the runway generator area east of the Commuter Terminal, and paints and a non-skid spray for metal steps are stored in a metal shed in the Bone yard area. Metal parts and other materials are stored in the boneyard area and near the runway generator area east of the Commuter Terminal, not all are covered and on pallets.
14. Vehicle maintenance is conducted by ASIG. Facilities Maintenance Department maintains runway signs, and Bay City Electric is contracted to maintain the light towers and generators.
15. ASIG fuels maintenance vehicles at four places: Maintenance shop at 2412, 2415 and 2417 Winship Lane, and the Commuter Terminal. They also fuel all light towers and generators.
16. Facilities Maintenance Department maintains the triturator area.
17. Roundup is used for weed control. Aztec Landscaping performs landscaping services. They bring their own pesticides and remove their landscape wastes.
18. Spill response materials are not on all vehicles.
19. Hazardous wastes are stored at the bone yard, covered on pallets. Ocean Blue is contracted to collect hazardous wastes as needed.
20. Stormwater pollution prevention training is performed annually by the Environmental Affairs Department.
21. Storm drain inspections are performed quarterly and before/after the rainy seasons.
22. FMD staff are trained to protect storm drains when performing maintenance and construction activities.
23. SDCRAA Facilities Maintenance Department uses the Airport Storm Water Management Plan and has a Hazardous Materials Business Plan.

### Significant Materials Potentially Exposed to Storm Water:

#### Potential Pollutant Sources

Building/ grounds maintenance  
Chemical storage  
Equipment fueling  
Equipment maintenance  
Equipment storage  
Equipment washing  
Fuel spills  
Fuel storage

#### Potential Pollutants

Turpentine, Lubricants, Fuel, Pesticides/  
herbicides/ fertilizers, Metals, Paints,  
Landscape wastes, Oil and Grease,  
Dumpster wastes, Hydraulic fluids,  
Antifreeze, Cleaning Solutions, Fuel,  
Solvents, Trash, Fire fighting foam (AFFF),

## Tenant Summary Sheet

Tenant:  
SDCRAA

### Significant Materials Potentially Exposed to Storm Water:

#### Potential Pollutant Sources

Materials loading/unloading  
Outdoor apron wash  
Outdoor waste storage  
Pesticide/ herbicide usage  
Ramp/ taxiway scrubbing  
Runway rubber removal  
Trash collection  
Vehicle fueling  
Vehicle parking

#### Potential Pollutants

Asphalt debris, Dumpster wastes, Lavatory chemicals, Lavatory wastes, Lubricants, Rubber particulates, Metals, Purple K, Battery Acid, Landscape wastes, Brake fluid, Cement, Adhesives, Silicone sealer  
Galvanizing compound, Caulking,

### Best Management Practices and Current Structural Controls:

The list below identifies the BMP categories and specific BMPs that are applicable to SDCRAA. Appendix B provides a description of each BMP category.

#### Applicable BMP Categories

Non-Storm Water Management  
Outdoor Equipment Ops and Maintenance Areas  
Aircraft, Ground Vehicle and Equipment Maintenance  
  
Aircraft, Ground Vehicle and Equipment Fueling  
Aircraft, Ground Vehicle and Equipment Cleaning  
Outdoor Loading/Unloading of Materials  
Outdoor/Indoor Material Storage  
Waste Handling and Disposal  
  
Building and Grounds Maintenance  
Employee Training  
Lavatory Service Operation  
Outdoor Washdown/Sweeping (Apron Washing, Ramp Scrubbing)  
Runway Rubber Removal  
Parking Lots  
Storm Drain Maintenance  
Housekeeping  
Safer/Alternative Products  
Spill Prevention, Control, and Clean-up  
Treatment Controls

#### BMP Number

SC01 - 3, 4, 1, 2  
SC02A - 1, 2  
SC02B - 10, 11, 12, 13, 1, 2, 3, 4, 5, 6, 7, 8, 9  
SC03 - 1, 10, 11, 2, 3, 4, 5, 6, 8  
SC04 - 1, 2  
SC06 - 2, 3, 1, 4, 6, 7  
SC07 - 12, 2, 3, 4, 1, 10, 11, 6, 7, 8, 9  
SC08 - 5, 6, 7, 8, 1, 10, 11, 12, 13, 14, 2, 3, 4, 9  
SC09 - 1, 2, 3, 4  
SC10 - 1, 2, 3, 4  
SC11 - 1, 2  
SC12 - 1, 5, 2, 3, 4, 6, 7, 8, 9  
  
SC15 - 4, 1, 2, 3  
SC16 - 1, 2, 11, 12, 3, 4, 5, 6  
SC17 - 1, 4, 2, 3, 5, 6, 7  
SC18 - 2, 3, 5, 7, 1, 4, 6, 8, 9  
SC19 - 1, 2  
SR01 - 6, 8, 1, 10, 2, 3, 4, 5, 7, 9  
TC01 - 1, 2, 4

## Tenant Summary Sheet

Tenant:

SDCRAA

Structural control measures used at SDCRAA:

Concrete curbing is used to direct stormwater away from covered storage area and trash compactor area.

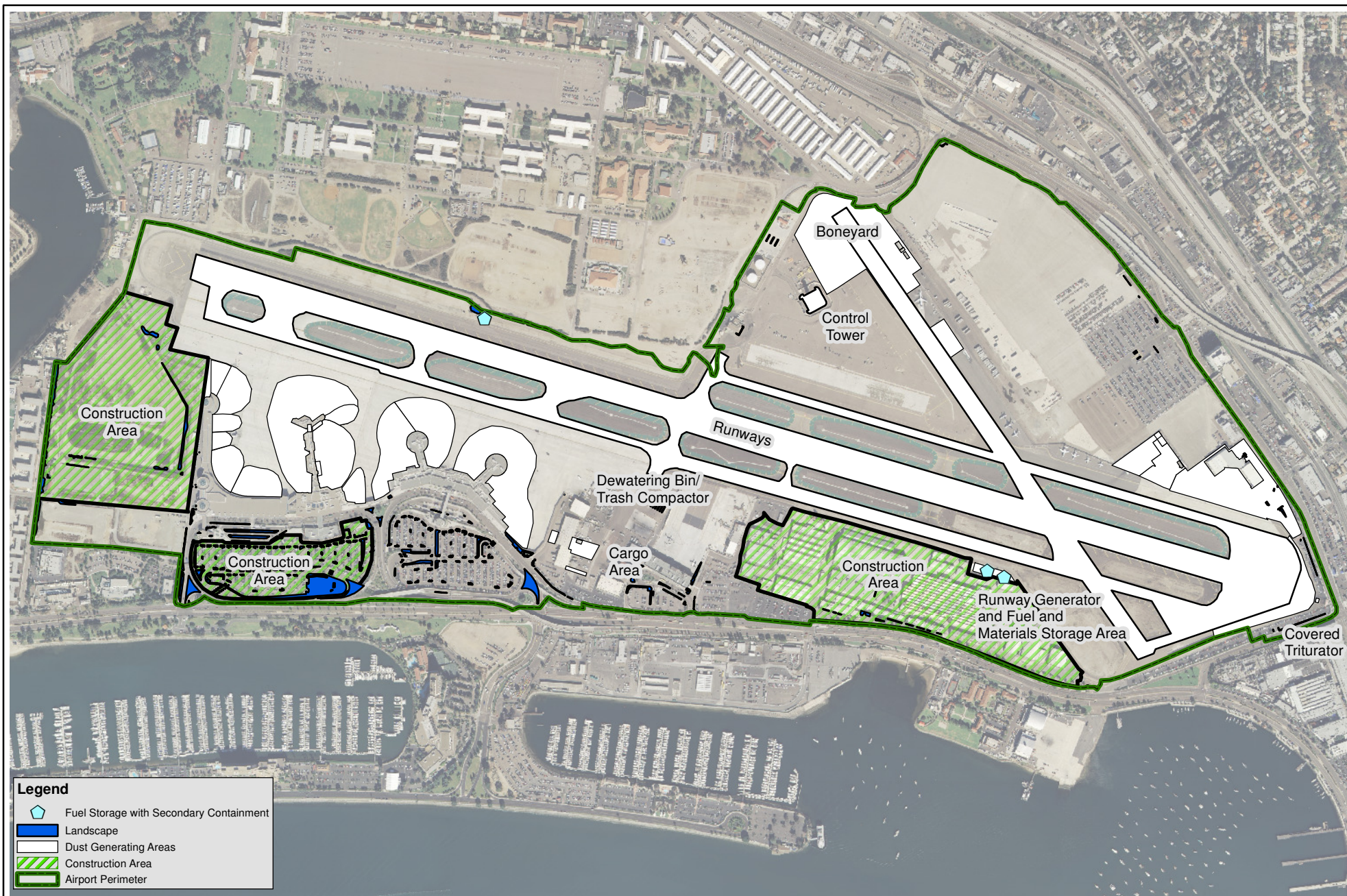
Concrete curbing with valves around diesel storage tanks to contain leaks.

Portable booms are used during washing of dumpster areas to funnel water to collection point where it is removed before entering MS4.

Trench drain in Terminal 2 West dumpster area is connected to sanitary sewer.

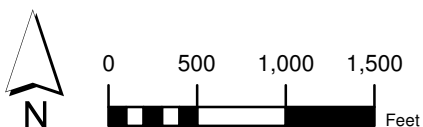
Triturator area is covered and sloped to prevent contact with storm water.





**Legend**

- Fuel Storage with Secondary Containment
- Landscape
- Dust Generating Areas
- Construction Area
- Airport Perimeter



PROJECT NO.: 5013-11-0003  
 DATE: November 2011  
 DRAWN BY: RMH  
 CHECKED BY: AA

MACTEC Engineering and Consulting, Inc.

**SDCRAA**  
**Operating Areas**  
 San Diego International Airport

FIGURE  
**E-21**