

Tenant Summary Sheet

Tenant:

Elite Line Services

SIC Code: 4581

Primary Activity: Maintenance of passenger boarding bridges, baggage conveyors, and potable water hoses.

Drainage Area: 8, 12

Nearest MS4 inlet: 200-1000 feet

Contact: Claudia Cox, Site Manager

E: ccox@elitelineservices.com, P: 619-298-5215, C: 619-279-1999, F: 619-298-0976

Secondary Contact: Derek Berger, Site Supervisor, C: 619-279-0185

Address: 3707 North Harbor Drive, #121
San Diego, CA 92101

Tenant Description and Primary Industrial Activities:

1. ELS services all passenger bridges and baggage conveyors except for United Airlines (in bound) and United Airlines conveyors at the ticket counters as well as the bag room. ELS also maintains all potable water cabinets.
2. Vehicle maintenance is conducted offsite.
3. Vehicles are fueled offsite. A golf cart is fueled in the fenced maintenance area located by Gate 27 using 5-gallon gasoline containers. Generator uses propane.
4. Wastes are stored in outdoor Waste Accumulation Area by Gate 27, contained and under cover.
5. No vehicle or equipment washing is performed.
6. ELS does not wash passenger bridges.
7. Ocean Blue picks up all hazardous wastes and waste oil.
8. Tenant uses the Airport Storm Water Management Plan. Tenant has a Hazardous Materials Business Plan.

Significant Materials Potentially Exposed to Storm Water:

Potential Pollutant Sources

Chemical storage
Equipment fueling
Equipment maintenance
Equipment storage
Fuel spills
Fuel storage
Outdoor waste storage
Vehicle parking

Potential Pollutants

Adhesives, Caulking, Cleaning solutions,
Oil and Grease, Paints, Degreasers,
Solvents, Lubricants, Antifreeze,
Fuel, Metals, Carburetor cleaner,
Acetone, Hydraulic Fluid, Trash,

Best Management Practices and Current Structural Controls:

The list below identifies the BMP categories and specific BMPs that are applicable to Elite Line Services. Appendix B provides a description of each BMP category.

Applicable BMP Categories

Non-Storm Water Management
Outdoor Equipment Ops and Maintenance Areas
Aircraft, Ground Vehicle and Equipment Maintenance
Aircraft, Ground Vehicle and Equipment Fueling
Aircraft, Ground Vehicle and Equipment Cleaning
Outdoor/Indoor Material Storage
Waste Handling and Disposal

BMP Number

SC01 - 1, 2, 4
SC02A - 1, 2
SC02B - 2, 1, 10, 11, 12, 13, 3, 4, 5, 6, 8,
SC03 - 1, 11, 2, 4, 5, 6
SC04 - 1, 2
SC07 - 1, 11, 12, 2, 3, 7
SC08 - 1, 10, 11, 12, 2, 3, 4, 5, 8, 9

Tenant Summary Sheet

Tenant:

Elite Line Services

Applicable BMP Categories

Employee Training

Housekeeping

Safer/Alternative Products

Spill Prevention, Control, and Clean-up

BMP Number

SC10 - 1, 2, 3, 4

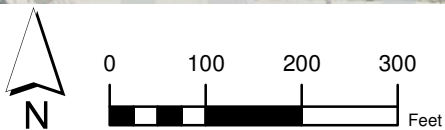
SC18 - 1, 2, 4, 3, 5, 6, 7, 8, 9

SC19 - 1, 2

SR01 - 6, 1, 2, 3, 4, 5, 7, 8, 9

Structural control measures used at Elite Line Services:

Concrete curbing is used to direct stormwater away from covered storage area



PROJECT NO.:
5013-11-0003

DATE:
November 2011

DRAWN BY:
RMH

CHECKED BY:
AA



MACTEC

MACTEC Engineering and Consulting, Inc.

**Elite Line Services
Operating Areas**

San Diego International Airport

FIGURE

E-12