

## Tenant Summary Sheet

### Tenant:

American

SIC Code: 4512, 4522

Primary Activity: Passenger Carrier

Drainage Area: 7, 12

Nearest MS4 inlet: 200-1000 feet

Contact: Gib Anderson, Crew Chief-Autoshop

E: gib.anderson@aa.com, P: 619- 231-5483, C: 619-807-3052, F: 619-231-7271

Address: 3707 North Harbor Drive #103  
San Diego, CA 92101

### Tenant Description and Primary Industrial Activities:

1. American Airlines operates out of gates 27, 29, 31, and 32 in Terminal 2 East.
2. American Airlines performs its own fueling of aircraft, vehicles, and equipment. Vehicles and equipment are fueled where they are parked. American has two (2) 8,400 gallon Jet A fueling trucks, one (1) 10,000 gallon Jet A fueling truck and one (1) combination 400 gallon diesel/350 gallon gasoline fueling truck.
3. Vehicle and equipment maintenance is performed inside or outside the Maintenance Shop (Auto shop).
4. Vehicle painting is performed inside or outside the Maintenance Shop using paint rollers.
5. Minor aircraft maintenance is performed at the gate. Major aircraft maintenance is performed in the wash rack area or north ramp.
6. Aircraft and vehicles are washed at the Aircraft Wash rack and at north ramp.
7. Five waste accumulation areas - one between Gates 31 and 32, two inside auto shop, one outside of auto shop, and one in stores next to auto shop.
8. Heritage Environmental Services collects American Airlines' hazardous wastes. Some are recycled and some are treated and disposed of.
9. During deicing operations, a scrubber is used to wash the deicing area and vacuum up wash water, which is drummed and disposed of by Heritage Environmental Services.
10. The County of San Diego inspects the sump at the aircraft wash rack every 6 months. American Airlines performs some maintenance and a contractor samples it and sumps it out when required.
11. Environmental Recovery Services come in and take samples from wash rack every 3 - 4 months.
12. American no longer does freight/cargo handling. GAT still receives deliveries (i.e. cabin supplies) for American.
13. Sump at aircraft washrack is cleaned every 6 months by Environmental Recovery Services.
14. Tenant has uses the Airport Storm Water Management Plan, and has an Emergency Contingency Plan, a Spill Prevention, Control, and Countermeasure Plan, and a Hazardous Materials Business Plan.

### Significant Materials Potentially Exposed to Storm Water:

#### Potential Pollutant Sources

Aircraft fueling  
Aircraft maintenance  
Aircraft sanitary services  
Aircraft washing  
Chemical storage  
Equipment fueling  
Equipment maintenance  
Equipment storage  
Fluid leaks from aircraft  
Fuel spills  
Fuel storage  
Outdoor waste storage  
Vehicle fueling  
Vehicle maintenance  
Vehicle parking  
Vehicle/equipment washing

#### Potential Pollutants

Cleaning solutions, Solvents, Antifreeze, Lubricants, Oil and Grease, Trash, Adhesives, Jet Fuel, Lavatory wastes, Paints, Sediment, Sealants, Acetone, Hydraulic fluids, Lavatory chemicals, Dumpster wastes, Deicing/ Anti-icing Fluids, Brake fluid, Gasoline, Propylene glycol, Battery acid, Diesel

## Tenant Summary Sheet

### Tenant:

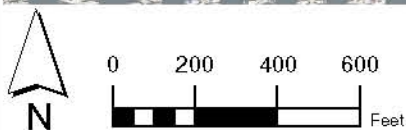
American

### Best Management Practices and Current Structural Controls:

The list below identifies the BMP categories and specific BMPs that are applicable to American. Appendix B provides a description of each BMP category.

<u>Applicable BMP Categories</u>	<u>BMP Number</u>
Non-Storm Water Management	SC01 - 1, 2, 4
Outdoor Equipment Ops and Maintenance Areas	SC02A - 2, 1
Aircraft, Ground Vehicle and Equipment Maintenance	SC02B - 10, 12, 13, 3, 7, 1, 11, 2, 4, 5, 6, 8, 9
Aircraft, Ground Vehicle and Equipment Fueling	SC03 - 1, 10, 11, 2, 3, 4, 5, 6, 8, 9
Aircraft, Ground Vehicle and Equipment Cleaning	SC04 - 1, 2, 3, 5, 6, 7, 8
Aircraft Deicing/Anti-Icing	SC05 - 1, 2, 3, 4
Outdoor/Indoor Material Storage	SC07 - 1, 11, 12, 2, 3, 7
Waste Handling and Disposal	SC08 - 7, 1, 10, 11, 12, 14, 2, 3, 4, 5, 7,
Employee Training	SC10 - 1, 2, 3, 4
Lavatory Service Operation	SC11 - 4, 6, 10, 3, 5, 7, 8, 9
Potable Water System Flushing	SC14 - 1
Housekeeping	SC18 - 1, 4, 2, 3, 5, 6, 7, 8, 9
Safer/Alternative Products	SC19 - 1, 2
Spill Prevention, Control, and Clean-up	SR01 - 6, 1, 10, 2, 3, 4, 5, 7, 8, 9

Structural control measures used at American:



PROJECT NO.:  
5013-11-0003

DATE:  
November 2011

DRAWN BY:  
RMH

CHECKED BY:  
AA

 **MACTEC**

MACTEC Engineering and Consulting, Inc.

**American  
Operating Areas**

**San Diego International Airport**

FIGURE

**E-5**